

SP 649
TIME VRMS
0 1490
100 1490
600 1940
1470 2500
2520 3220
3140 4340
4000 5140

SP 729
TIME VRMS
0 1490
100 1490
700 1940
1750 2740
2330 3220
3020 4020
4000 4980

SP 809
TIME VRMS
0 1490
100 1490
700 1940
1620 2650
2330 3220
3020 4020
4000 4980

SP 889
TIME VRMS
0 1490
100 1490
570 1860
1550 2500
2180 3220
2800 4020
4000 5140

SP 969
TIME VRMS
0 1490
110 1490
680 1940
1320 2340
2300 2740
3000 3380
4000 4980

SP 1049
TIME VRMS
0 1490
120 1490
480 1780
1180 2260
2200 2740
2960 3540
4000 4980

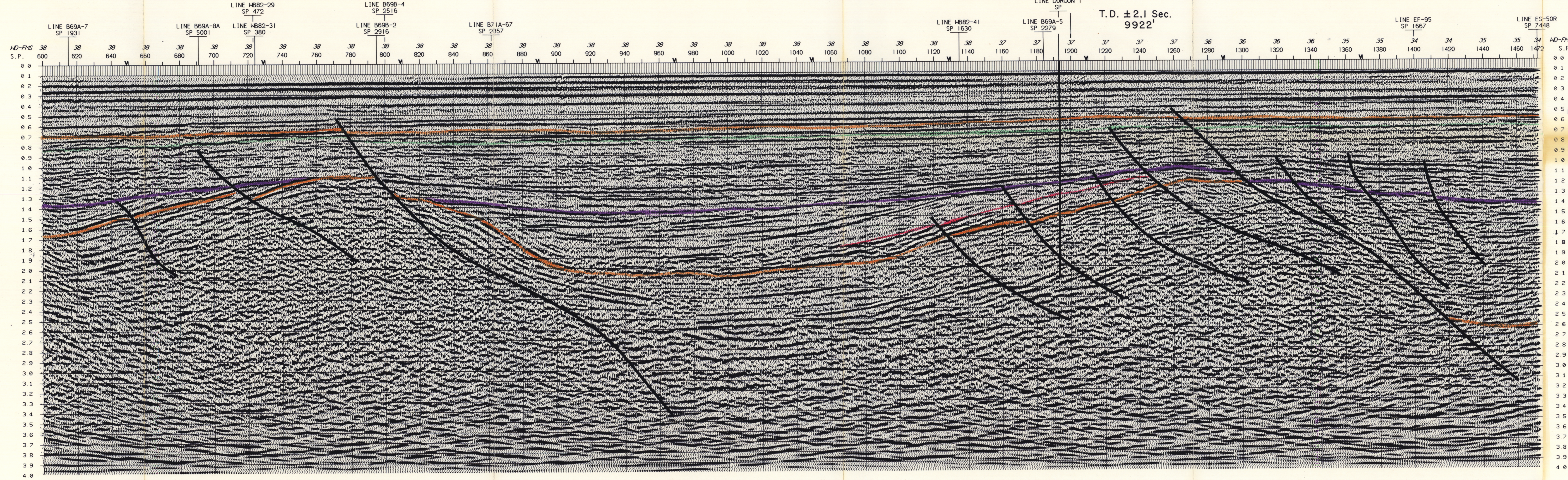
SP 1129
TIME VRMS
0 1490
100 1490
480 1780
1180 2260
2200 2740
2960 3540
4000 4980

SP 1209
TIME VRMS
0 1490
110 1490
480 1780
1180 2260
1850 2580
2660 3700
4000 4980

SP 1289
TIME VRMS
0 1490
100 1490
500 1780
1100 2180
1900 2660
2660 3220
4000 4980

SP 1369
TIME VRMS
0 1490
100 1490
580 1780
1520 2500
2330 3060
3020 4180
4000 4980

SEA EAGLE



Eastern View Coal Measures (Unconformity)
Paleocene L. balmei* (Unconformity)

Intra-Upper Cretaceous* Unconformity

mid-Cretaceous* Unconformity

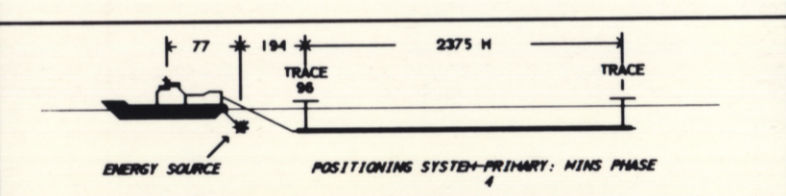
LINE WB82-32
S.P. 600-1472
S.E.
DIRECTION OF SHOOTING
MIGRATION
WEAVER OIL & GAS
BASS BASIN
PERMIT T-16-P

T-15-P

GeoCenter
DATE PROCESSED MAY 1982
REEL NUMBER 7138
CONTRACT NUMBER 4887

FIELD RECORDING

RECORDED BY	WESTERN GEOPHYSICAL
DATE	FEBRUARY 1982
FORMAT	SEG B
ENERGY SOURCE	GAIN 36 DB
TYPE	AIR GUNS
ARRAY	10 GUNS
STREAMER	760 CU. INS. 4500 PSI.
LENGTH	2375 METERS
DEPTH	40 FT.
ARRAY	20
PARAMETERS	
RECORDING FOLD	4800%
SAMPLE INTERVAL	2 MS
RECORDING FILTER	OUT - 128HZ @ 700B/OCTAVE



DIGITAL PROCESSING

SEG	PROCESS	PARAMETERS
1	DEMULTIPLEX	BINARY GAIN RECOVERY OUTPUT 4 MS
2	GAIN	AMPLITUDE RECOVERY
3	CDP TRACE GATHER	GROUP/TRACE/TRACE BIN
4	PRE-FILTER	SEE BELOW
5	DECONVOLUTION	SEE BELOW
6	VELOCITY ANALYSIS	CONSTANT VELOCITY STACK OVER 8 COPS
7	NO. FAIL	NORMAL VELOCITY STACK OVER 8 COPS
8	CDP STACK	4800%
9	FILTER	SEE BELOW
10	EQUALIZATION	1000 MS AGC
11	MIGRATION	NO. ITERATION
12	FILTER	SEE BELOW
13	EQUALIZATION	DATA DEPENDENT

DECON	OPERATOR LENGTH	PREDICTIVE GAP	DEFINITION WINDOW	APPLICATION WINDOW
5	180	35	0 TO 3500	RECORD LENGTH

FILTER	CUT OFF POINT	ON POINT	OFF POINT	APPLICATION TIMES FOR SHIPMENTS SPECIFIED
12	13	15	56	0-1000
4	4	5	56	2000-4000
9	4	5	56	RECORD LENGTH

SAMPLE RATE: 4MS; DATUM CORRECTION: 13 MS
SCALES: HORIZONTAL 24 TR/IN VERTICAL 2.5 IN/SEC
RECORDING POLARITY: NEG. VALUE EQUALS PRESSURE INCREASE
PROCESSING POLARITY: POSITIVE NO. GIVES BLACK PEAK

Enclosure Line 7

213147 T/15P Part 11
5 cm

CR-198 06-27