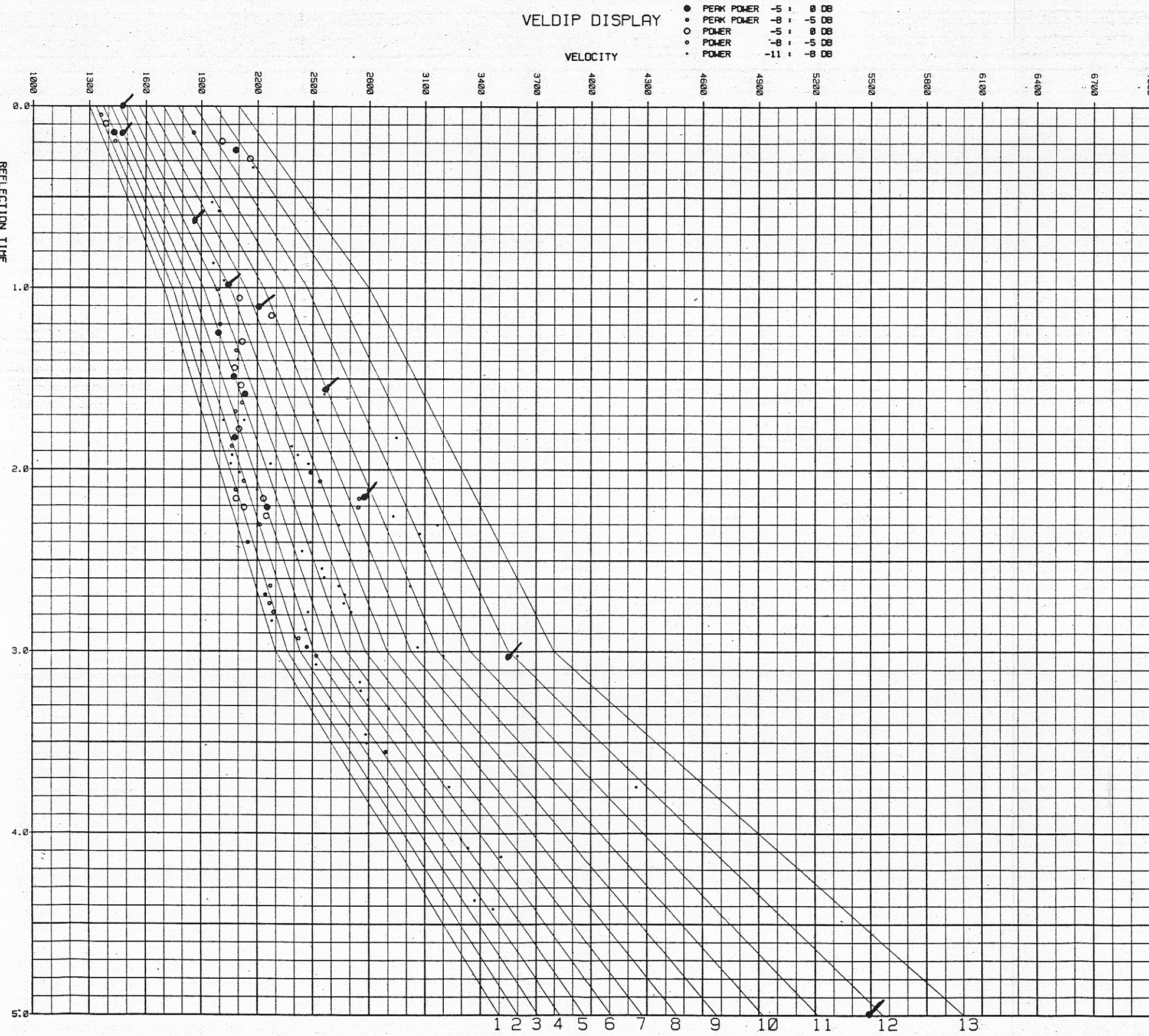
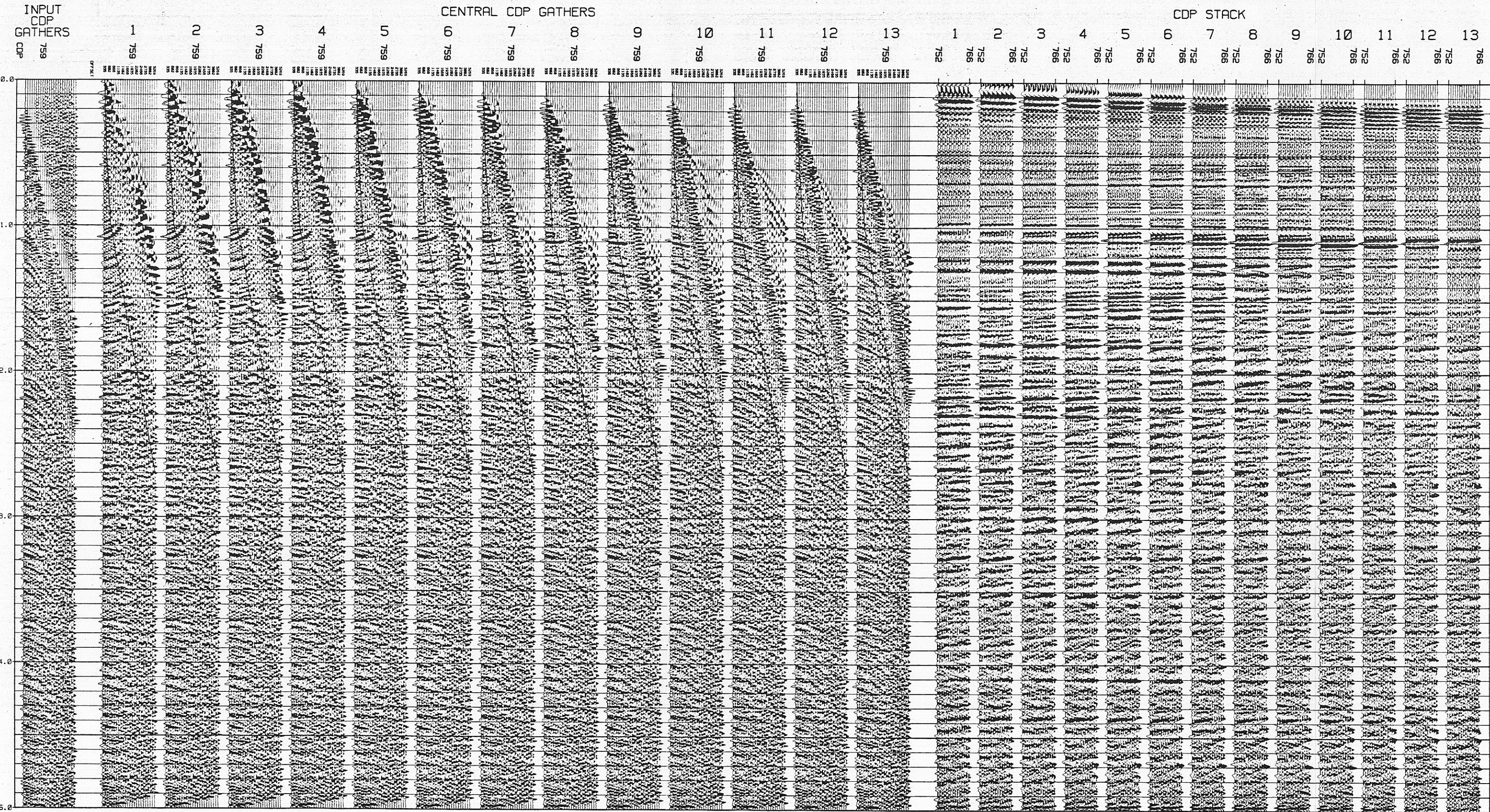


CLIENT: BRIDGE OIL -- BOX 8 --
 AREA : AUSTRALIA
 LINE : H225A
 DATE : 21-JUN-1985

VELFAN VELOCITY ANALYSIS

- VELFUN
- VINTERP = NFD
- VRESID = NORMAL
- MUTE/AGC
- MUTEDPT = POSTINFO
- RES = 300
- STACK
- FLD = 24
- SOLPRN = 0.00
- DECON
- FILTER
- PRED. RANGE = 0
- COHERE
- AUTOBAL
- DIPSCAN
- THRESH = 15
- SCAL METHOD = PLAT SUPPRESSION
- AUTOPIK



VELOCITY PICKS

TIME	VEL	VEL	VEL
0.0	1362	1362	1362
0.1	1365	1365	1365
0.2	1368	1368	1368
0.3	1371	1371	1371
0.4	1374	1374	1374
0.5	1377	1377	1377
0.6	1380	1380	1380
0.7	1383	1383	1383
0.8	1386	1386	1386
0.9	1389	1389	1389
1.0	1392	1392	1392
1.1	1395	1395	1395
1.2	1398	1398	1398
1.3	1401	1401	1401
1.4	1404	1404	1404
1.5	1407	1407	1407
1.6	1410	1410	1410
1.7	1413	1413	1413
1.8	1416	1416	1416
1.9	1419	1419	1419
2.0	1422	1422	1422
2.1	1425	1425	1425
2.2	1428	1428	1428
2.3	1431	1431	1431
2.4	1434	1434	1434
2.5	1437	1437	1437
2.6	1440	1440	1440
2.7	1443	1443	1443
2.8	1446	1446	1446
2.9	1449	1449	1449
3.0	1452	1452	1452
3.1	1455	1455	1455
3.2	1458	1458	1458
3.3	1461	1461	1461
3.4	1464	1464	1464
3.5	1467	1467	1467
3.6	1470	1470	1470
3.7	1473	1473	1473
3.8	1476	1476	1476
3.9	1479	1479	1479
4.0	1482	1482	1482
4.1	1485	1485	1485
4.2	1488	1488	1488
4.3	1491	1491	1491
4.4	1494	1494	1494
4.5	1497	1497	1497
4.6	1500	1500	1500
4.7	1503	1503	1503
4.8	1506	1506	1506
4.9	1509	1509	1509
5.0	1512	1512	1512