



INDUCTION - 4FF40
SPHERICALLY FOCUSED

RESISTIVITY
OHMS-M²/M
r.s. 2.8

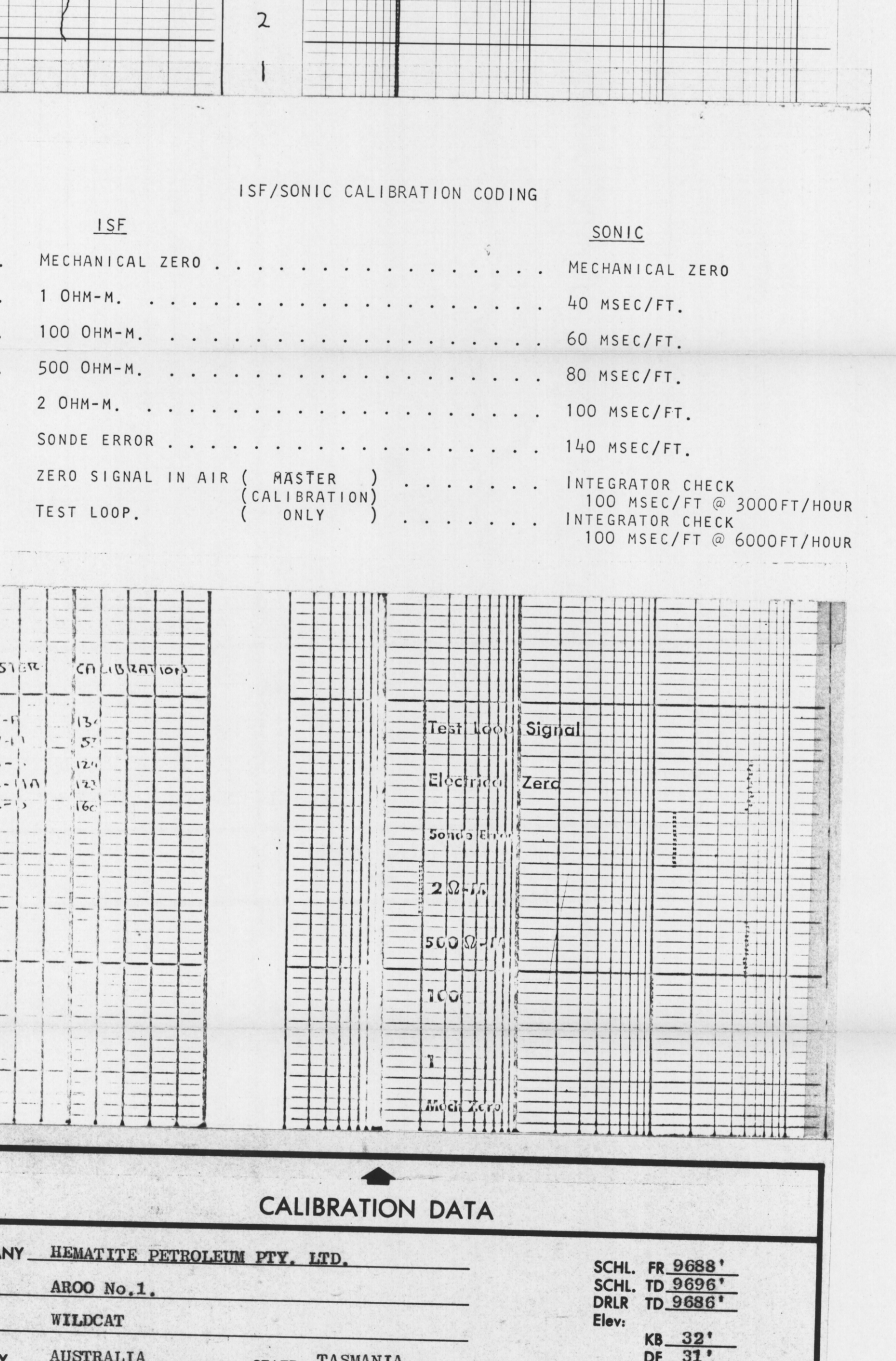
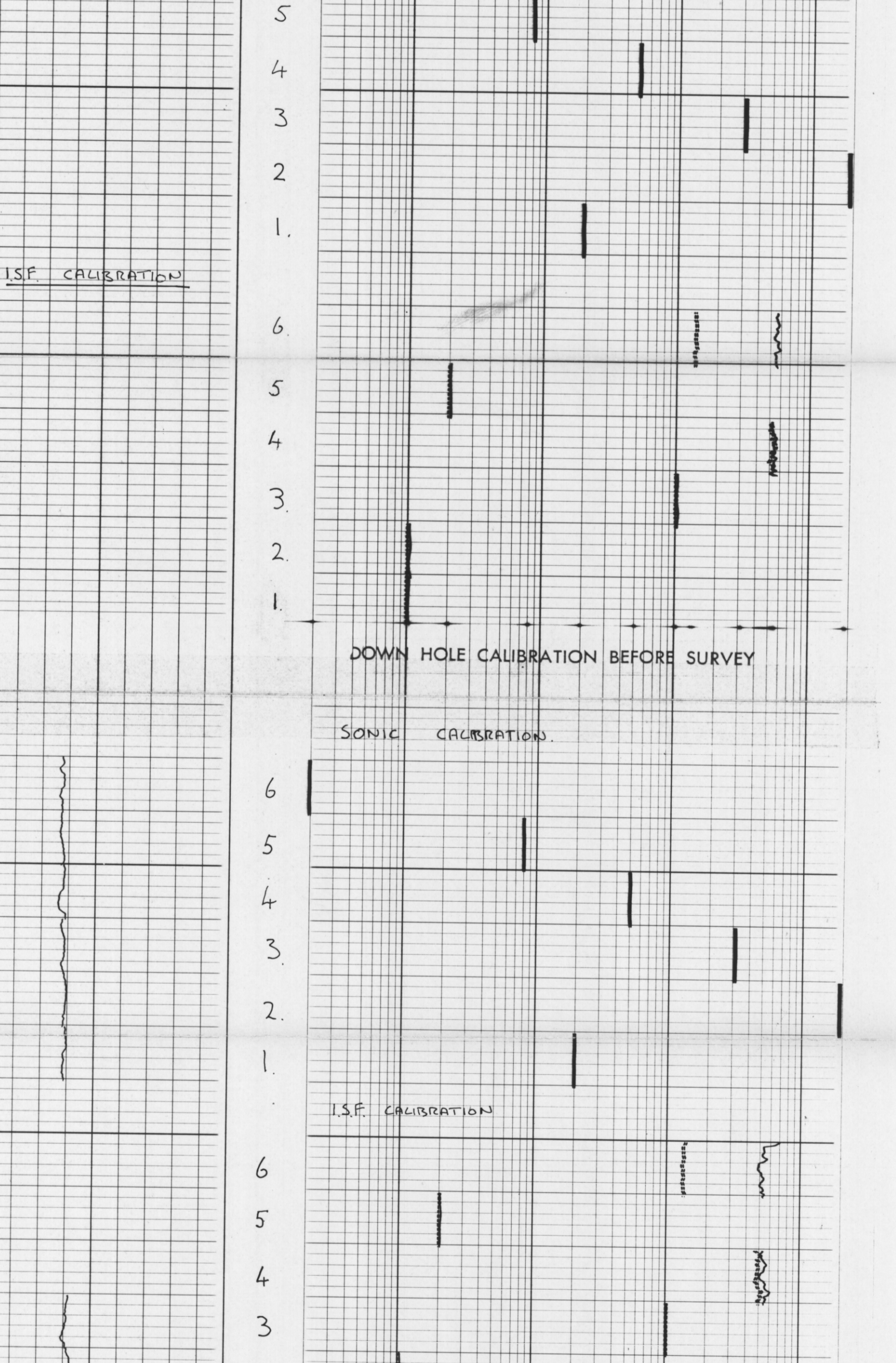
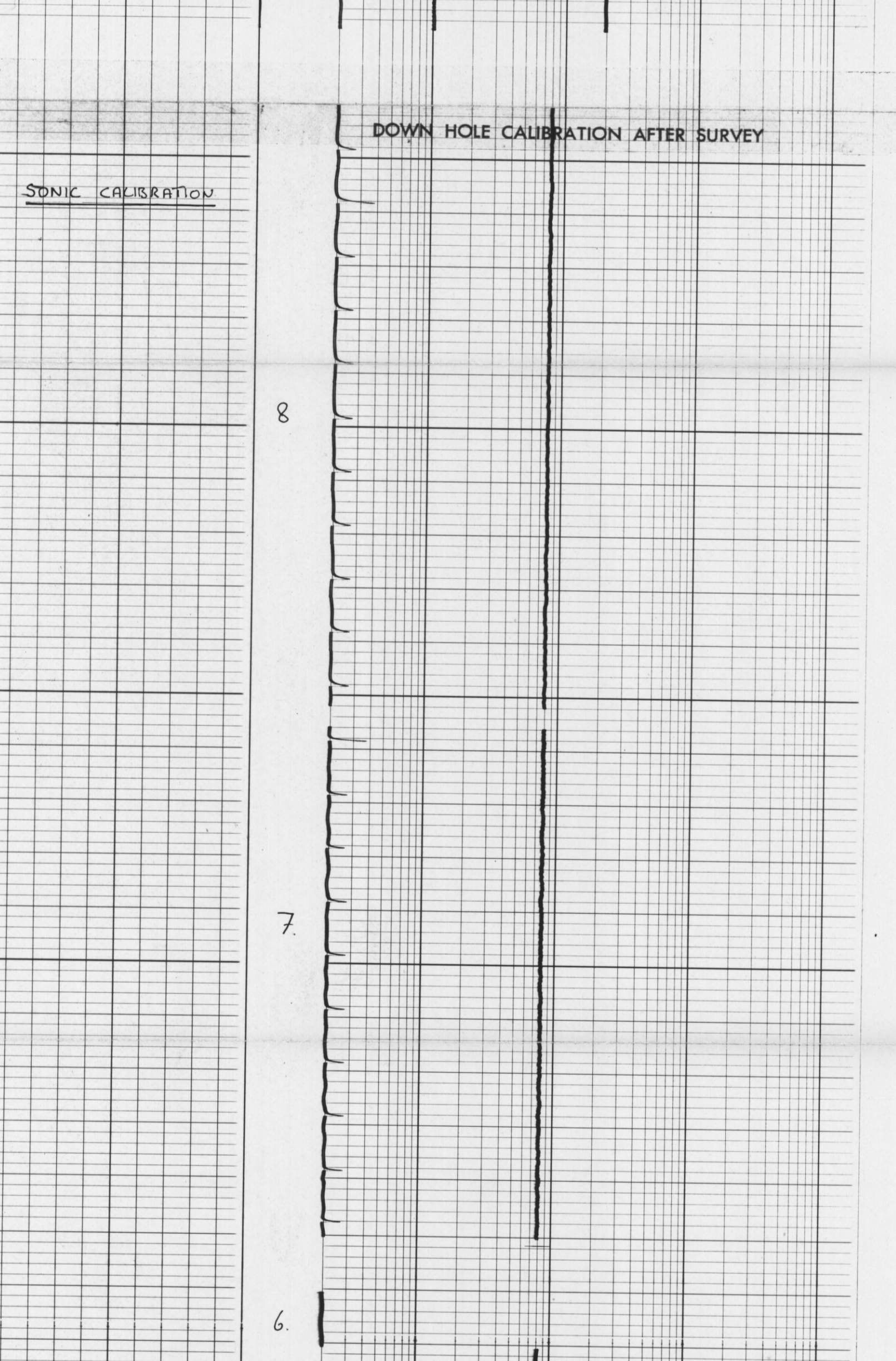
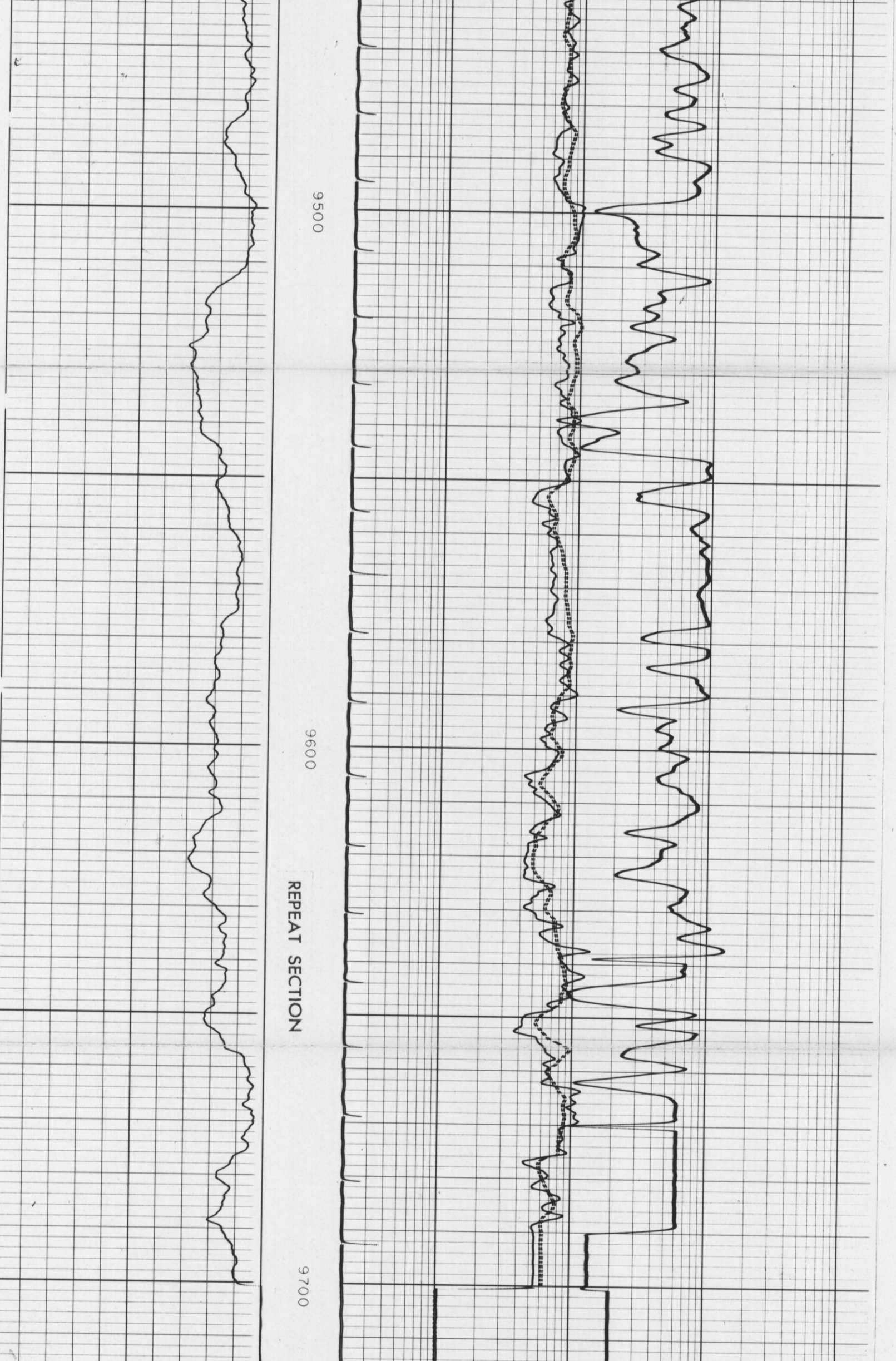
5" 140 40

SPONTANEOUS-POTENTIAL MILLIVOLTS

INTERVAL TIME
MICROSECONDS PER FOOT

COMPANY HEMATITE PETROLEUM PTY. LTD. SCHL. FR 9688'
WELL ABOO No. 1. SCHL. TD 9895'
FIELD WILDCAT DLR TD 9886'
COUNTY AUSTRALIA STATE TASMANIA KB 32'
DF 31'
GL -250'

CALIBRATION DATA



ISF/SONIC CALIBRATION CODING

| | |
|---|--|
| ISF | SONIC |
| 1. MECHANICAL ZERO | MECHANICAL ZERO |
| 2. 1 OHM-M. | 40 MSEC/FT. |
| 3. 100 OHM-M. | 60 MSEC/FT. |
| 4. 500 OHM-M. | 80 MSEC/FT. |
| 5. 2 OHM-M. | 100 MSEC/FT. |
| 6. SONDE ERROR | 140 MSEC/FT. |
| 7. ZERO SIGNAL IN AIR (MASTER CALIBRATION ONLY) | INTEGRATOR CHECK 100 MSEC/FT @ 3000FT/HOUR INTEGRATOR CHECK 100 MSEC/FT @ 6000FT/HOUR |
| 8. TEST LOOP. | |

CALIBRATION DATA

COMPANY HEMATITE PETROLEUM PTY. LTD. SCHL. FR 9688'
WELL ABOO No. 1. SCHL. TD 9895'
FIELD WILDCAT DLR TD 9886'
COUNTY AUSTRALIA STATE TASMANIA KB 32'
DF 31'
GL -250'

5cm