

**Trace Amplitudes Barramundi Prospect Block T/27P
Bass Basin, Australia**

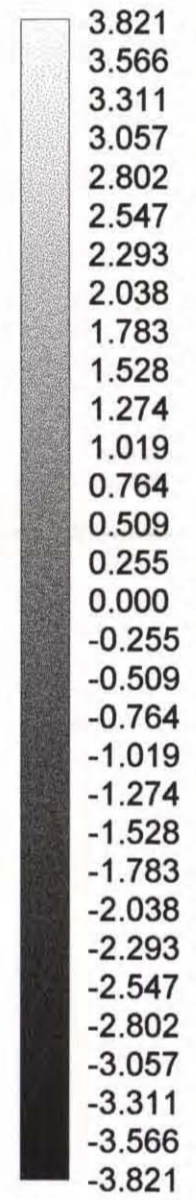
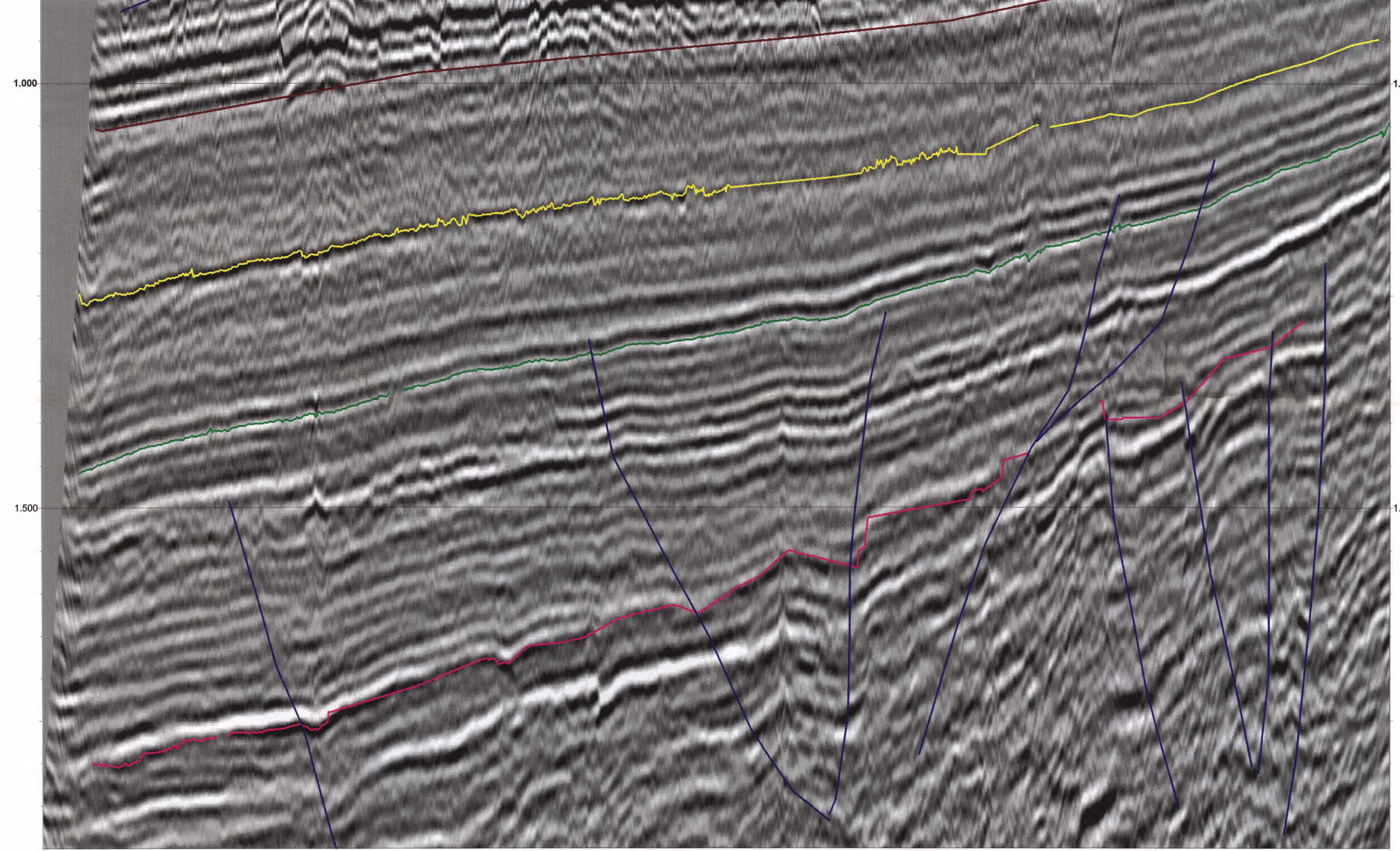
Exploration Consultants, Globex Far East

OR-0442A

CONTENTS**Enclosures**

1. Trace Amplitudes – Line BB96-01
2. Trace Amplitudes – Line BB96-02
3. Trace Amplitudes – Line BB96-03
4. Trace Amplitudes – Line BB96-04
5. Trace Amplitudes – Line BB96-06
6. Trace Amplitudes – Line BB96-07
7. Trace Amplitudes – Line BB96-09
8. Trace Amplitudes – Line BB96-11
9. Trace Amplitudes – Line BB96-12
10. Trace Amplitudes – Line BB96-13
11. Trace Amplitudes – Line BB96-14
12. Trace Amplitudes – Line BB96-50
13. Trace Amplitudes – Line BB96-54
14. Trace Amplitudes – Line BB96-56
15. Trace Amplitudes – Line TNK4-27
16. Trace Amplitudes – Line TQH5-65
17. Trace Amplitudes – Line TQH5-67

SP: 950.0 1050.0 1150.0 1250.0 1350.0 1450.0 1550.0 1650.0
BB96-14, 1606, 1708 BB96-12, 1046S, 1018 BB96-10, 1720 BB96-08, 1041 BB96-06, 1835396-56, 15; BB96-04, 1032 BB96-02, 1740
BB96-01 -

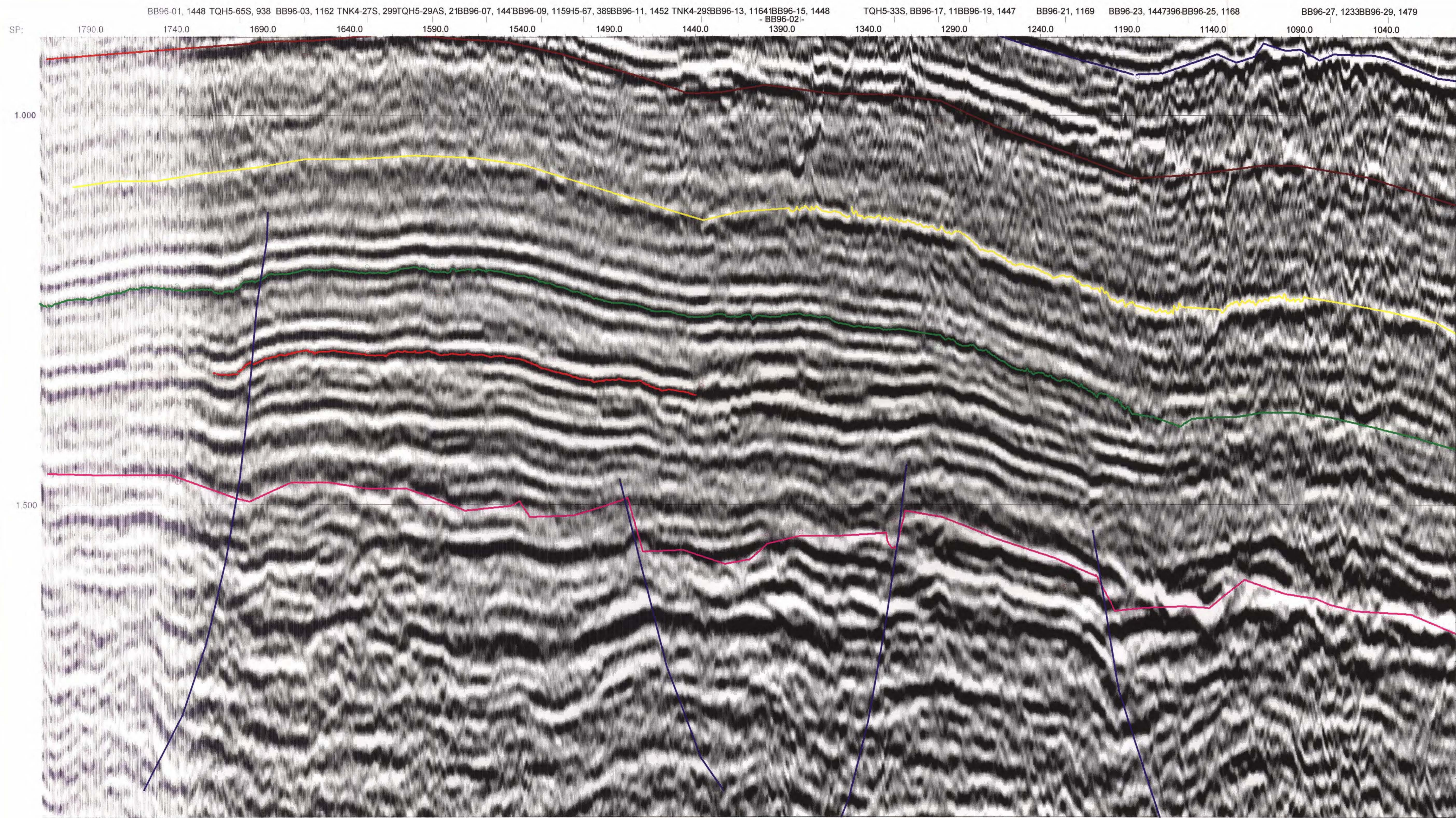


5 cm

BARRAMUNDI PROSPECT
TRACE AMPLITUDES
LINE BB96 - 01

058003

ENCLOSURE 1
OR-0442A



BARRAMUNDI PROSPECT
TRACE AMPLITUDES
LINE BB96 - 02

5 cm

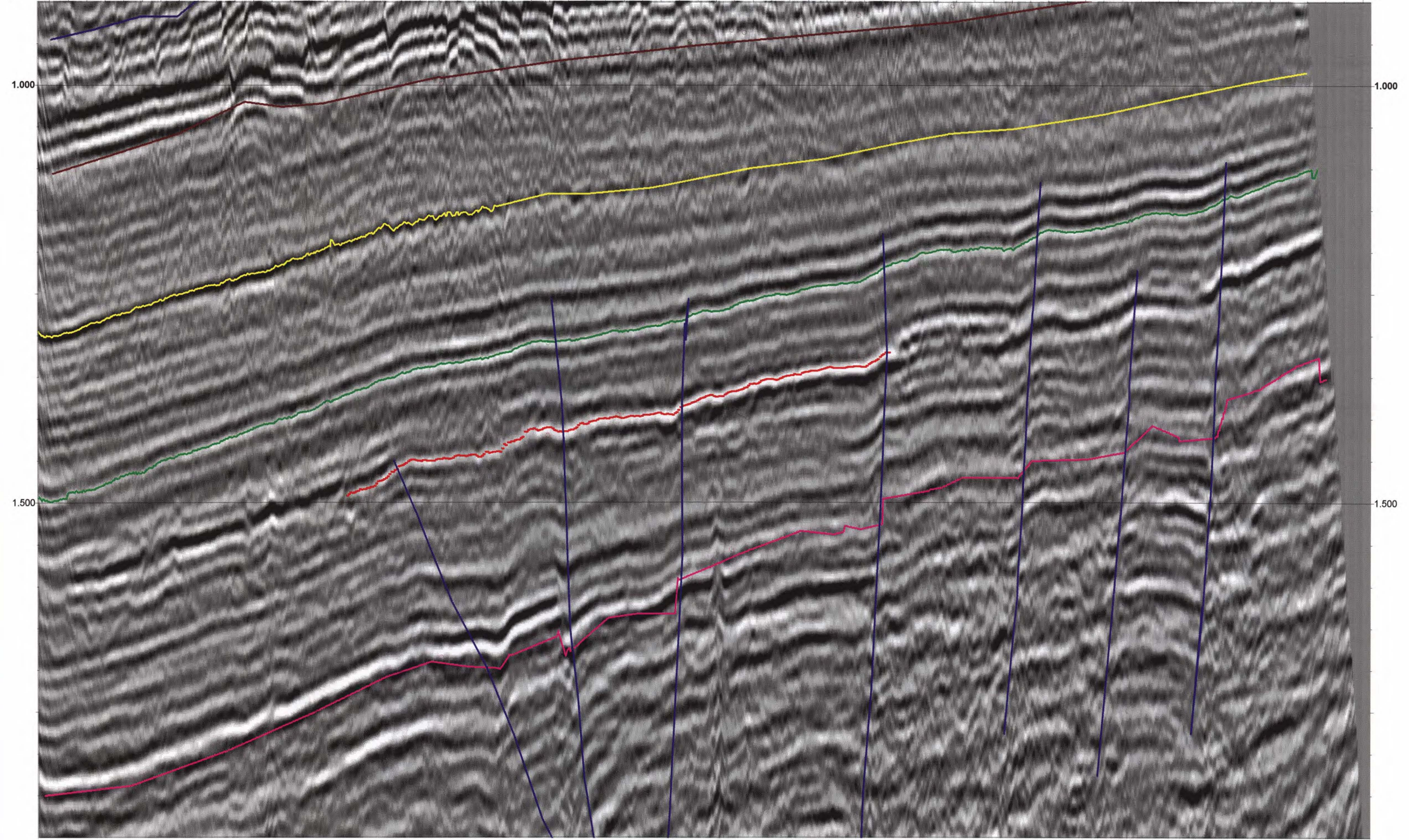
ENCLOSURE 2

558004

OR-0442A

SP: 1640.0 1540.0 1440.0 1340.0 1240.0 1140.0 1040.0 940.0

TNK4-10BB96-14, 1528 BB96-12, 1124797, 954 BB96-10, 16432BB96-08, 1118 BB96-06, 1759396-56, 16(BB96-04, 1108TNK4-6S, 419 BB96-02, 1666
-BB96-03-



3.684
3.438
3.193
2.947
2.701
2.456
2.210
1.965
1.719
1.473
1.228
0.982
0.737
0.491
0.246
-0.000
-0.246
-0.491
-0.737
-0.982
-1.228
-1.473
-1.719
-1.965
-2.210
-2.456
-2.701
-2.947
-3.193
-3.438
-3.684

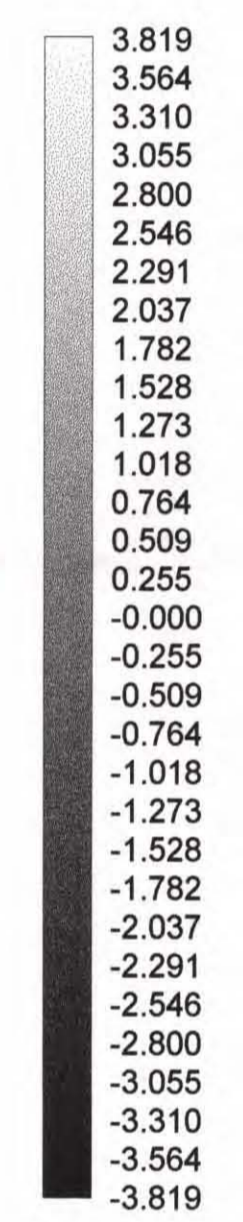
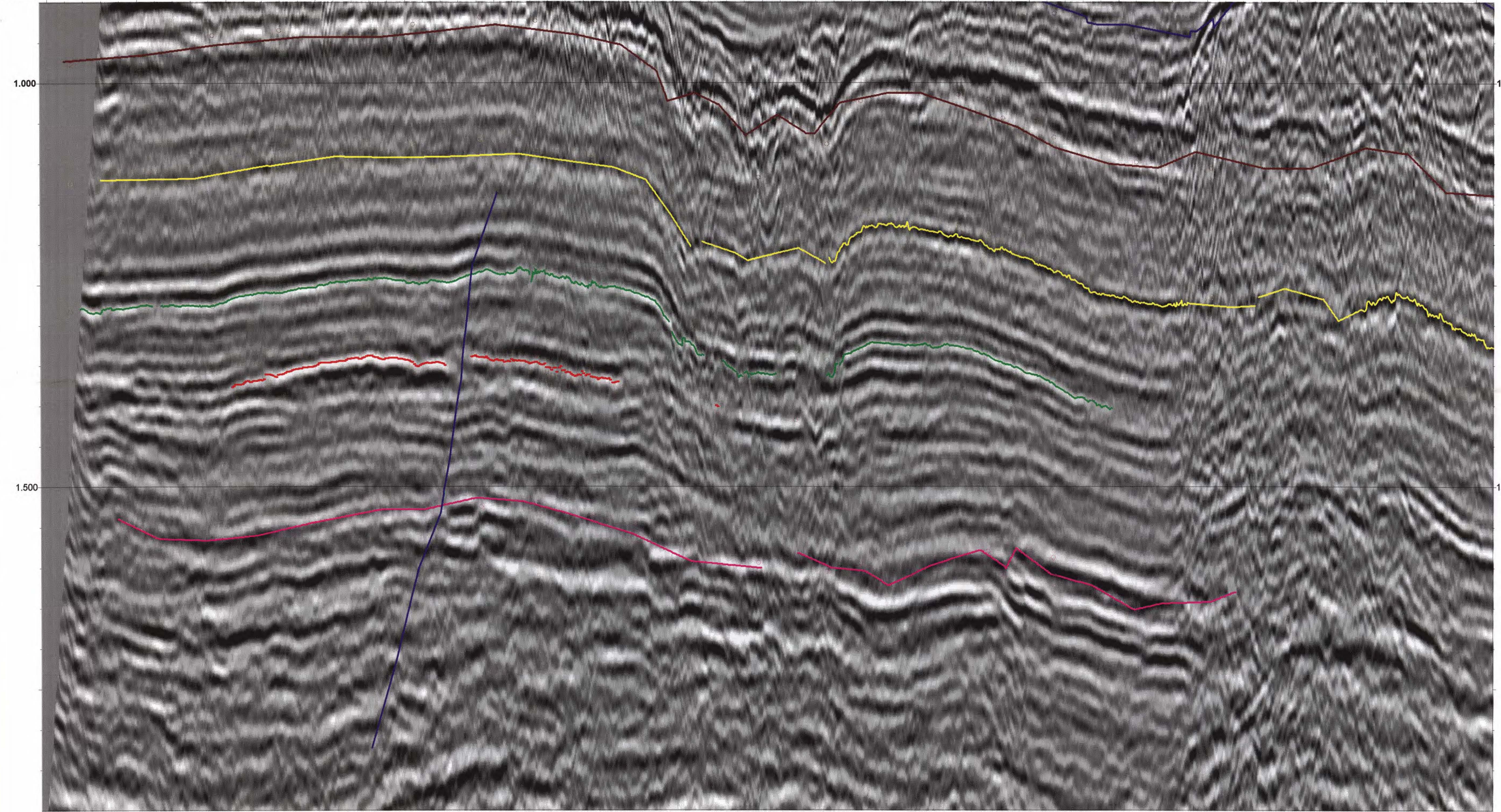
BARRAMUNDI PROSPECT
TRACE AMPLITUDES
LINE BB96 - 03

558005

OR-0442A
ENCLOSURE 3

5 cm

BB96-65, 1251 BB96-01, 1364 TQH5-65S, 869 BB96-03, 1245 TNK4-27S, 230TQH5-29AS, 2'BB96-07, 136BB96-09, 124115-67, 457BB96-11, 1371 TNK4-29BB96-13, 1245'BB96-15, 1367
 SP: 940.0 1040.0 1140.0 1240.0 1340.0 1440.0 1540.0 1640.0 1740.0

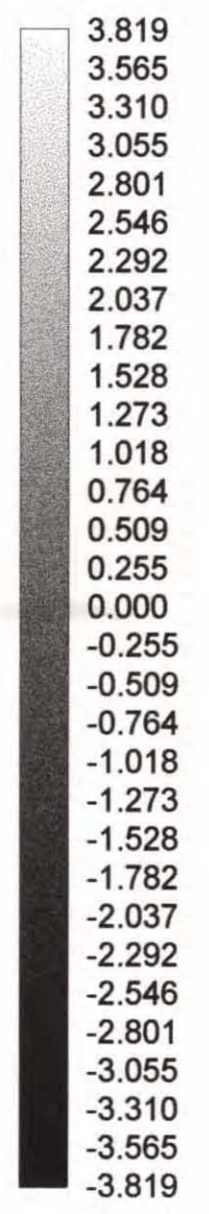
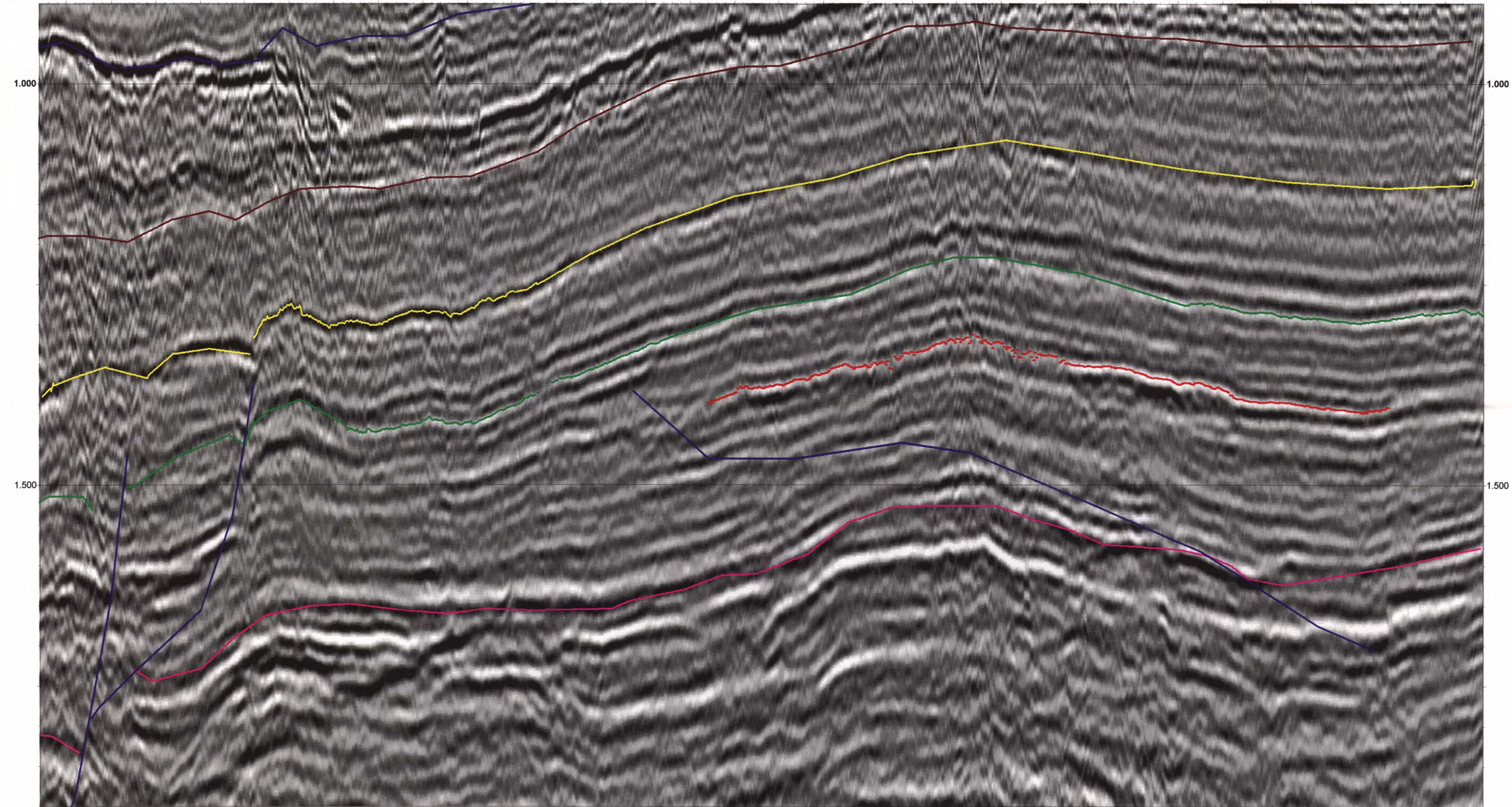


5 cm

BARRAMUNDI PROSPECT
 TRACE AMPLITUDES
 LINE BB96 - 04

55806
 OR-0443A
 ENCLOSURE 4

BB96-29, 1621 BB96-27, 1091 BB96-25, 1310 BB96-23, 1305 BB96-21, 1311 BB96-19, 1305396-17, 130515-33S, 274 BB96-15, 13067 BB96-13, 13062071 294 BB96-11, 1310TQH5-67, BB96-09, 1301B96-07, 1304H5-29AS, 2065TNK4-27S, 181 BB96-03, 1304 TQH5-65S, 820 BB96-01, 1306
 SP: 1140.0 1190.0 1240.0 1290.0 1340.0 1390.0 1440.0 1490.0 1540.0 1590.0 1640.0 1690.0 1740.0 1790.0 1840.0 1890.0

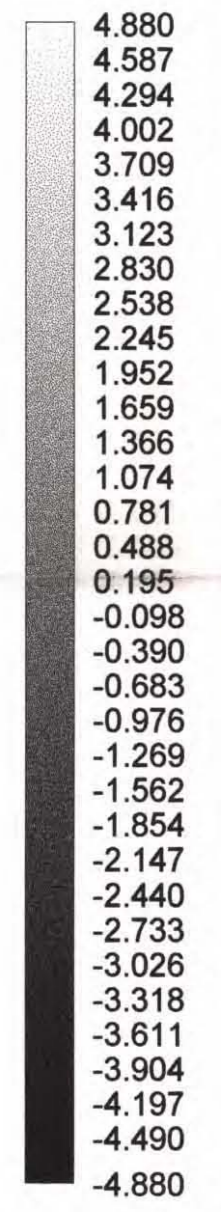
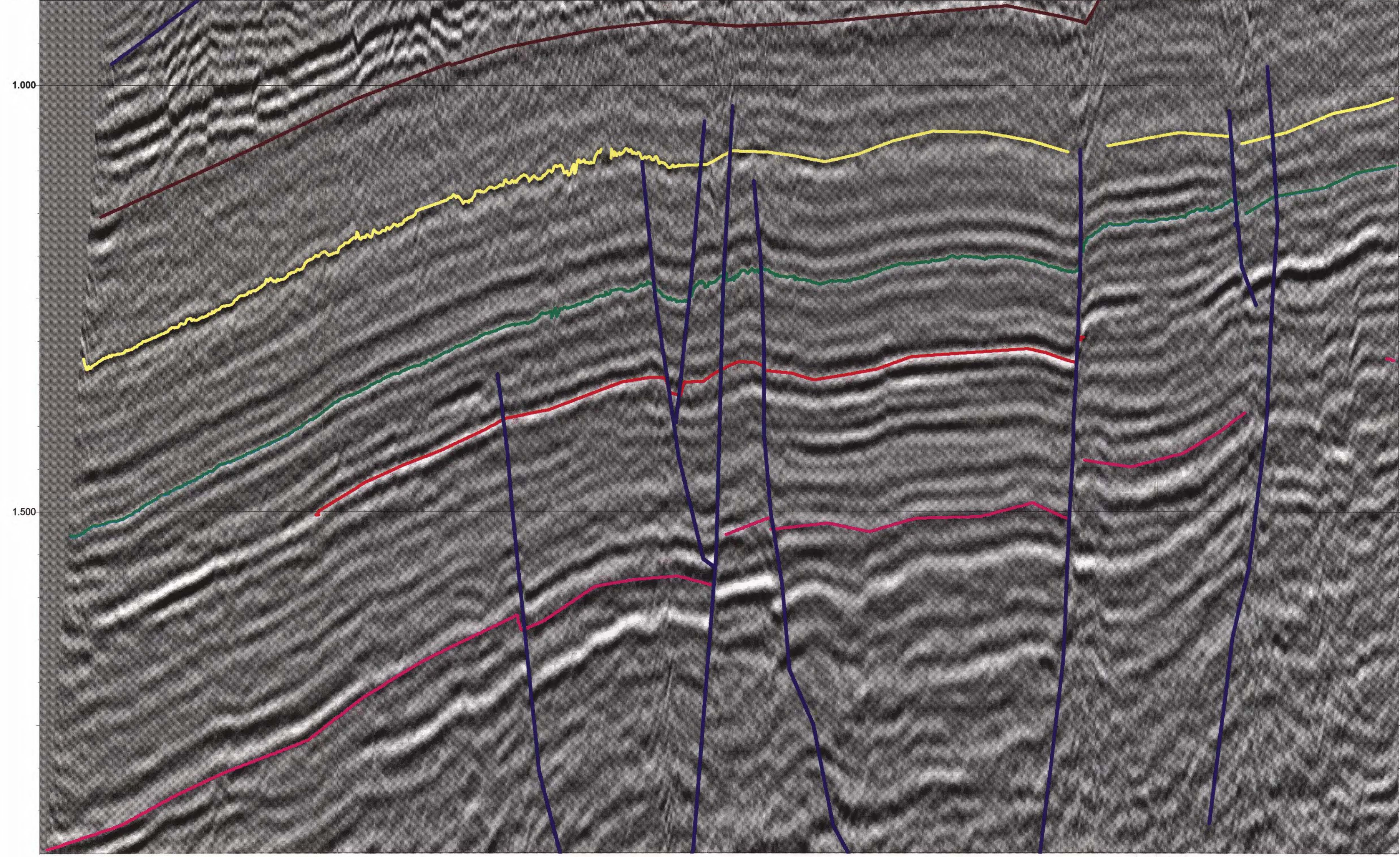


5 cm

BARRAMUNDI PROSPECT
 TRACE AMPLITUDES
 LINE BB96 - 06

55807
 OR-0442A
 ENCLOSURE 5

SP: 940.0 1040.0 1140.0 1240.0 1340.0 1440.0 1540.0 1640.0
TNK4-1|BB96-14, 1421 BB96-12, 123028S, 865 BB96-10, 153717BB96-08, 1224 BB96-06, 1653-24AS, 209 BB96-04, 1213TNK4-6S, 331 BB96-02, 1561
BB96-07 -



5 cm

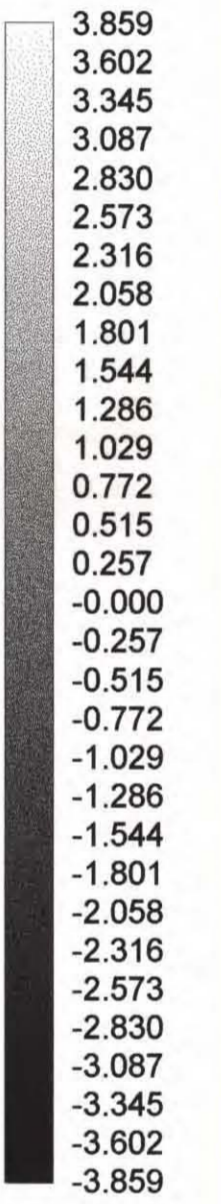
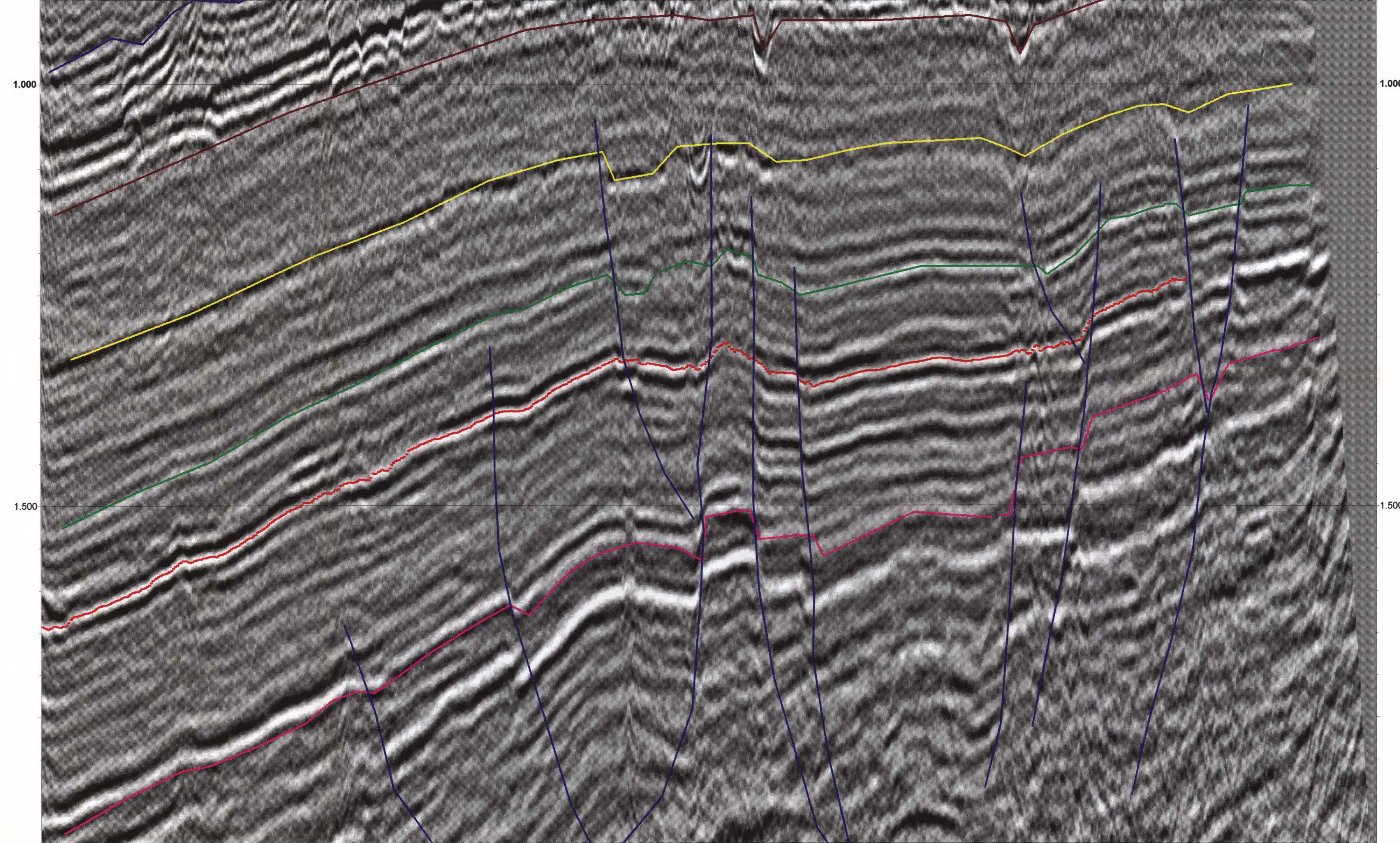
BARRAMUNDI PROSPECT
TRACE AMPLITUDES
LINE BB96 - 07

558008

OR-0442A
ENCLOSURE 6

SP: 1640.0 1590.0 1540.0 1490.0 1440.0 1390.0 1340.0 1290.0 1240.0 1190.0 1140.0 1090.0 1040.0 990.0 940.0

TNK4-1 BB96-14, 1392 BB96-12, 1259-28S, 840 BB96-10, 1507-5 BB96-08, 1254 BB96-06, 1622-24AS, 234 BB96-04, 1244 TNK4-6S, 305 BB96-02, 1529
 BB96-09

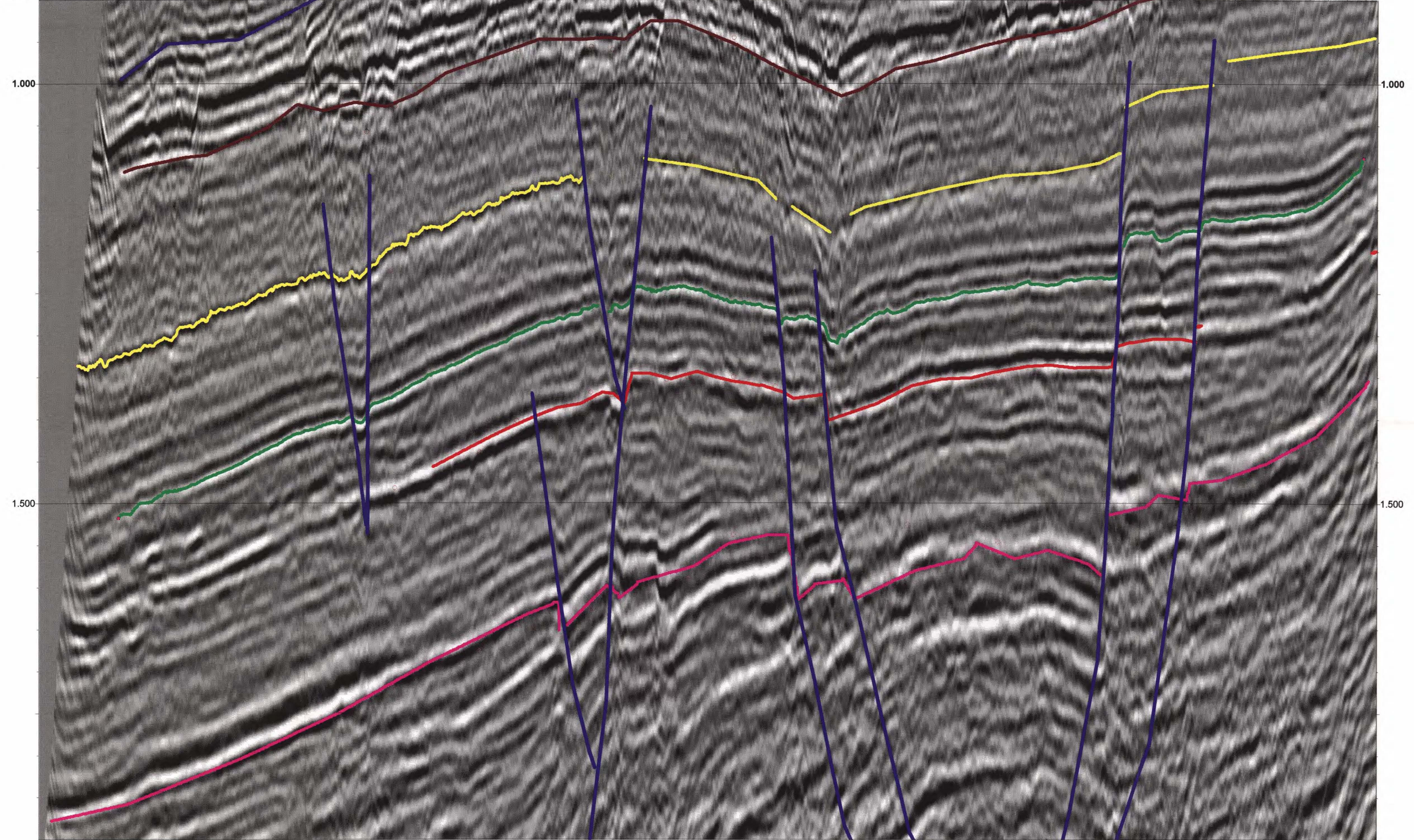


5 cm

BARRAMUNDI PROSPECT
 TRACE AMPLITUDES
 LINE BB96 - 09

55809
 OR-0442 A
 ENCLOSURE 7

SP: 940.0 1040.0 1140.0 1240.0 1340.0 1440.0 1540.0 1640.0
TNK4-1BB96-14, 1335 BB96-12, 1317-28S, 792 BB96-10, 1450 11BB96-08, 13112BB96-06, 1565-24AS, 282 BB96-04, 1301TNK4-6S, 258 BB96-02, 1472
- BB96-11 -



- 3.808
- 3.579
- 3.351
- 3.122
- 2.894
- 2.665
- 2.437
- 2.209
- 1.980
- 1.752
- 1.523
- 1.295
- 1.066
- 0.838
- 0.609
- 0.381
- 0.152
- 0.076
- 0.305
- 0.533
- 0.762
- 0.990
- 1.219
- 1.447
- 1.675
- 1.904
- 2.132
- 2.361
- 2.589
- 2.818
- 3.046
- 3.275
- 3.503
- 3.808

5 cm

BARRAMUNDI PROSPECT
TRACE AMPLITUDES
LINE BB96 - 11

558010
OR-0442A
ENCLOSURE 8

BB96-65, 1440

BB96-01, 1173 TQH5-65S, BB96-BB96-03, 1439

TNK4-27S, 69TQH5-29AS, 1BB96-07, 11BB96-09, 1437-15-67, 622BB96-11, 1173

TNK4-29BB96-13, 14447BB96-15, 1167

TQH5-33S, BB96-17, 144BB96-19, 1165

BB96-21, 1452

BB96-23, 1164

BB96-25, 1452

BB96-27, 948

SP: 940.0

1040.0

1140.0

1240.0

1340.0

1440.0

1540.0

1640.0

1740.0

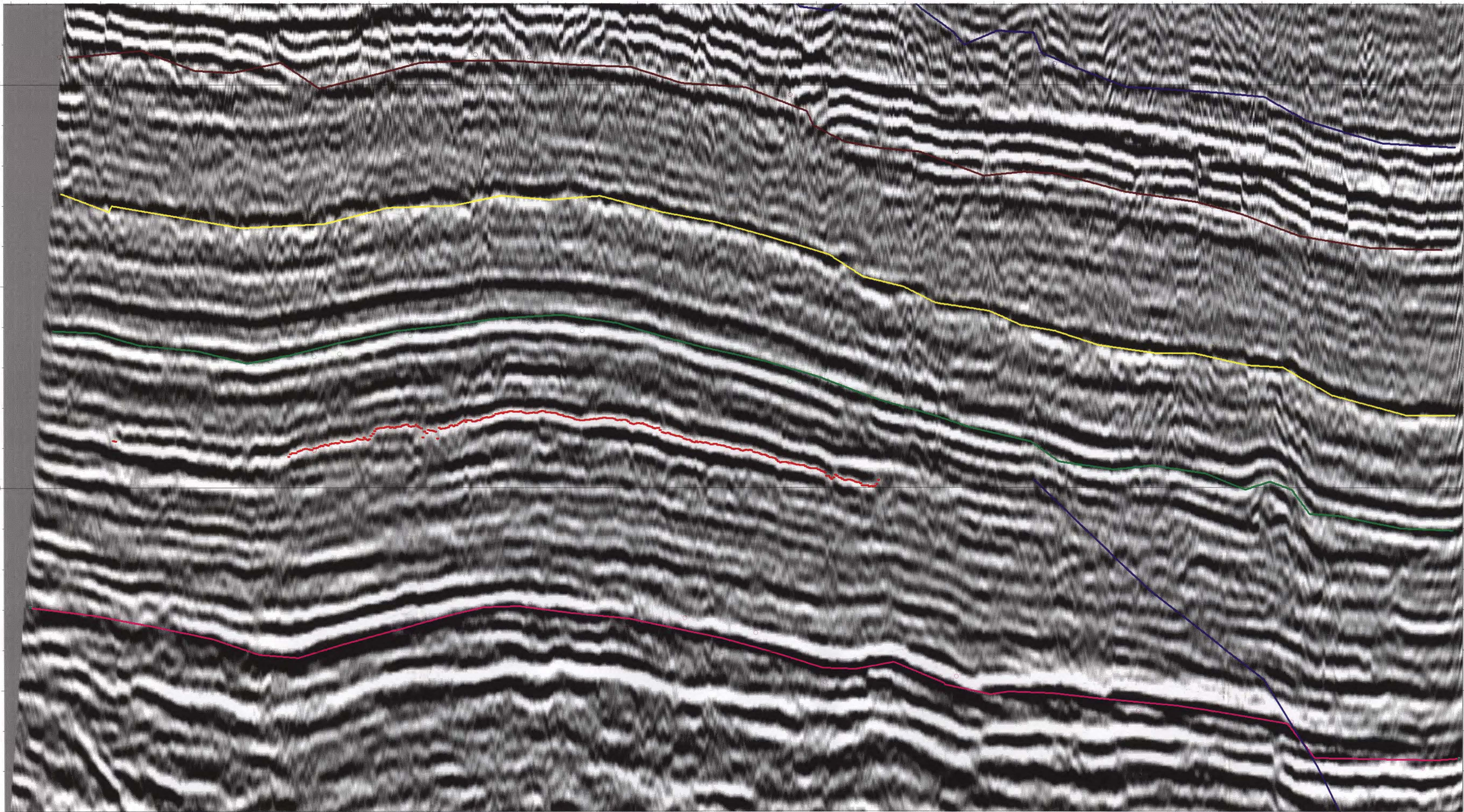
1.000

1.000

1.500

1.500

- 1.938
- 1.822
- 1.706
- 1.590
- 1.473
- 1.357
- 1.241
- 1.124
- 1.008
- 0.892
- 0.775
- 0.659
- 0.543
- 0.426
- 0.310
- 0.194
- 0.078
- 0.039
- 0.155
- 0.271
- 0.388
- 0.504
- 0.620
- 0.737
- 0.853
- 0.969
- 1.086
- 1.202
- 1.318
- 1.434
- 1.551
- 1.667
- 1.783
- 1.938



5 cm

BARRAMUNDI PROSPECT
 TRACE AMPLITUDES
 LINE BB96 - 12

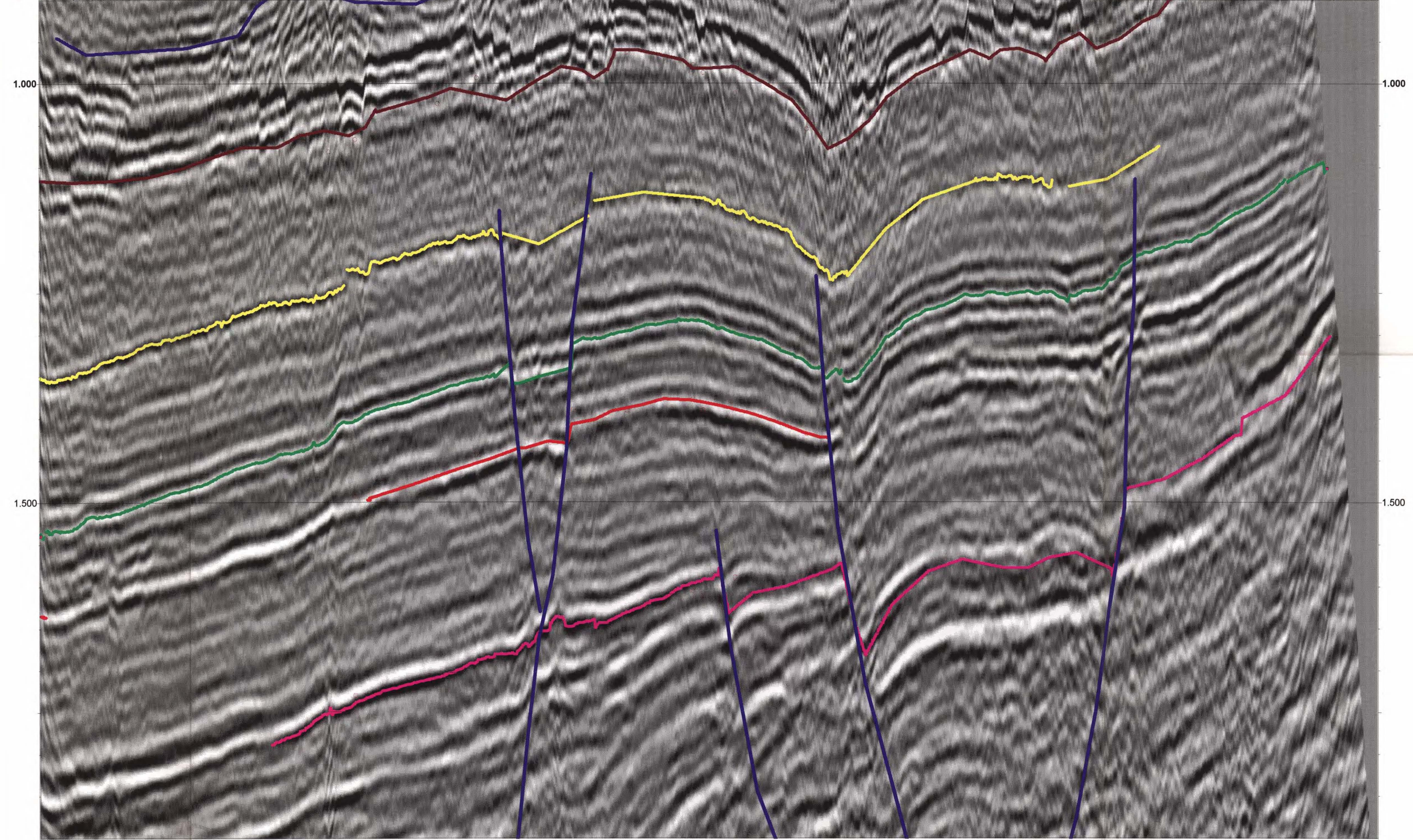
558011

ENCLOSURE 9
OR-0442A

SP: 1640.0 1540.0 1440.0 1340.0 1240.0 1140.0 1040.0 940.0

TNK4-BB96-14, 1276 BB96-12, 1375-28S, 743 BB96-10, 1391 10BB96-08, 1370 BB96-06, 1507834AS, 330 BB96-04, 1359TNK4-6S, 209 BB96-02, 1415 TQH5-16AS, -53

-BB96-13-



5 cm

BARRAMUNDI PROSPECT
TRACE AMPLITUDES
LINE BB96 - 13

558012

ENCLOSURE 10
OR-0442A

SP: 940.0

BB96-25, 1492

BB96-23, 1123

BB96-21, 1493

BB96-19, 1123 BB96-17, 14875-33S, 425

BB96-15, 1124 BB96-13, 148829S, 143

BB96-11, 1128 TQH5-67, BB96-09, 1484396-07, 1122-15-29AS, 1917 TNK4-27S, 29

- BB96-14 -

BB96-03, 1487 TQH5-65S, 668

BB96-01, 1123 96-50, 1676

BB96-65, 1492

1040.0

1140.0

1240.0

1340.0

1440.0

1540.0

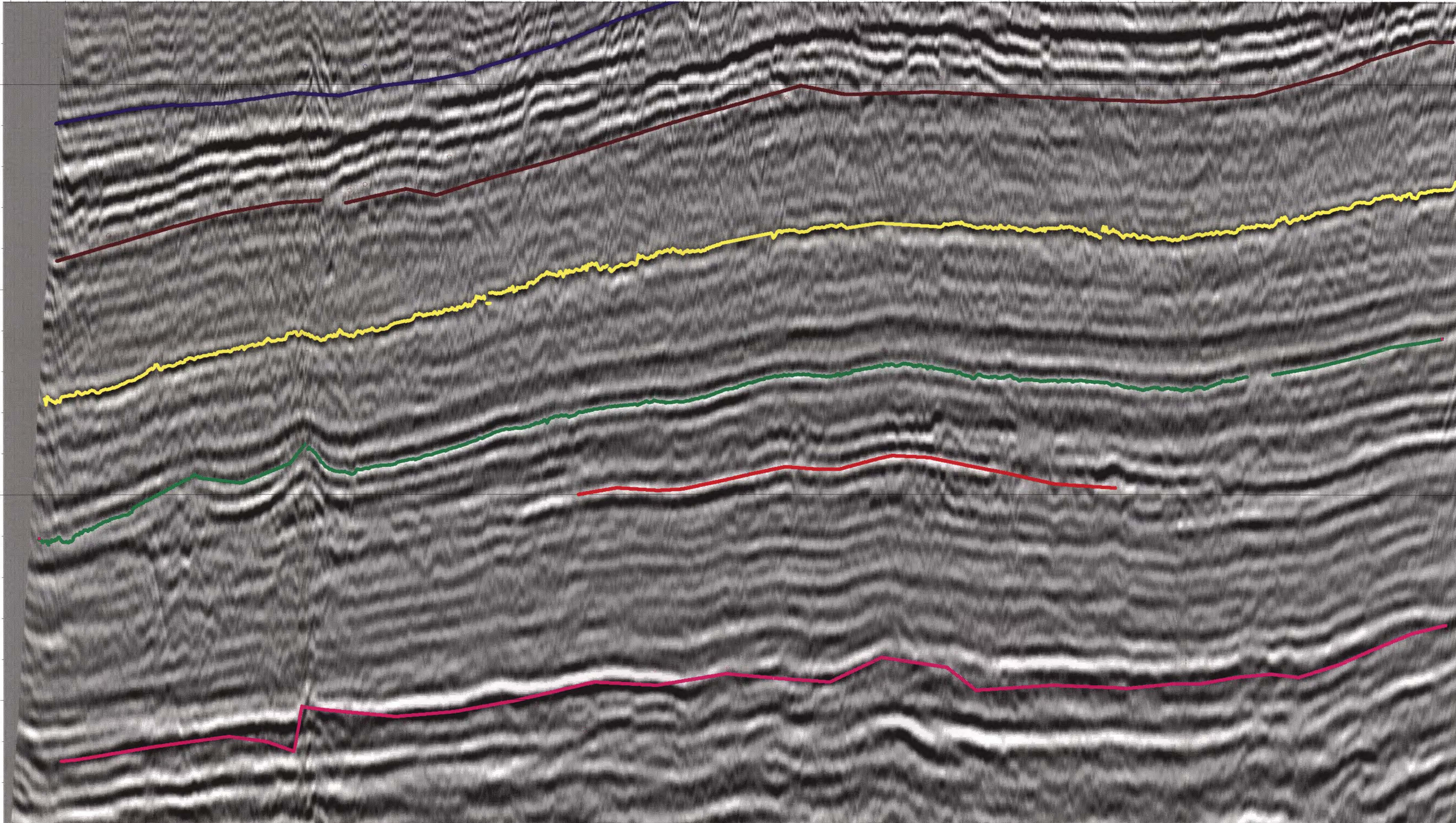
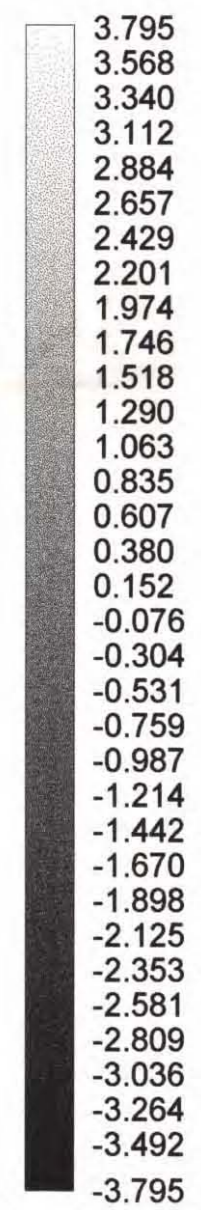
1640.0

1.000

1.000

1.500

1.500



5 cm

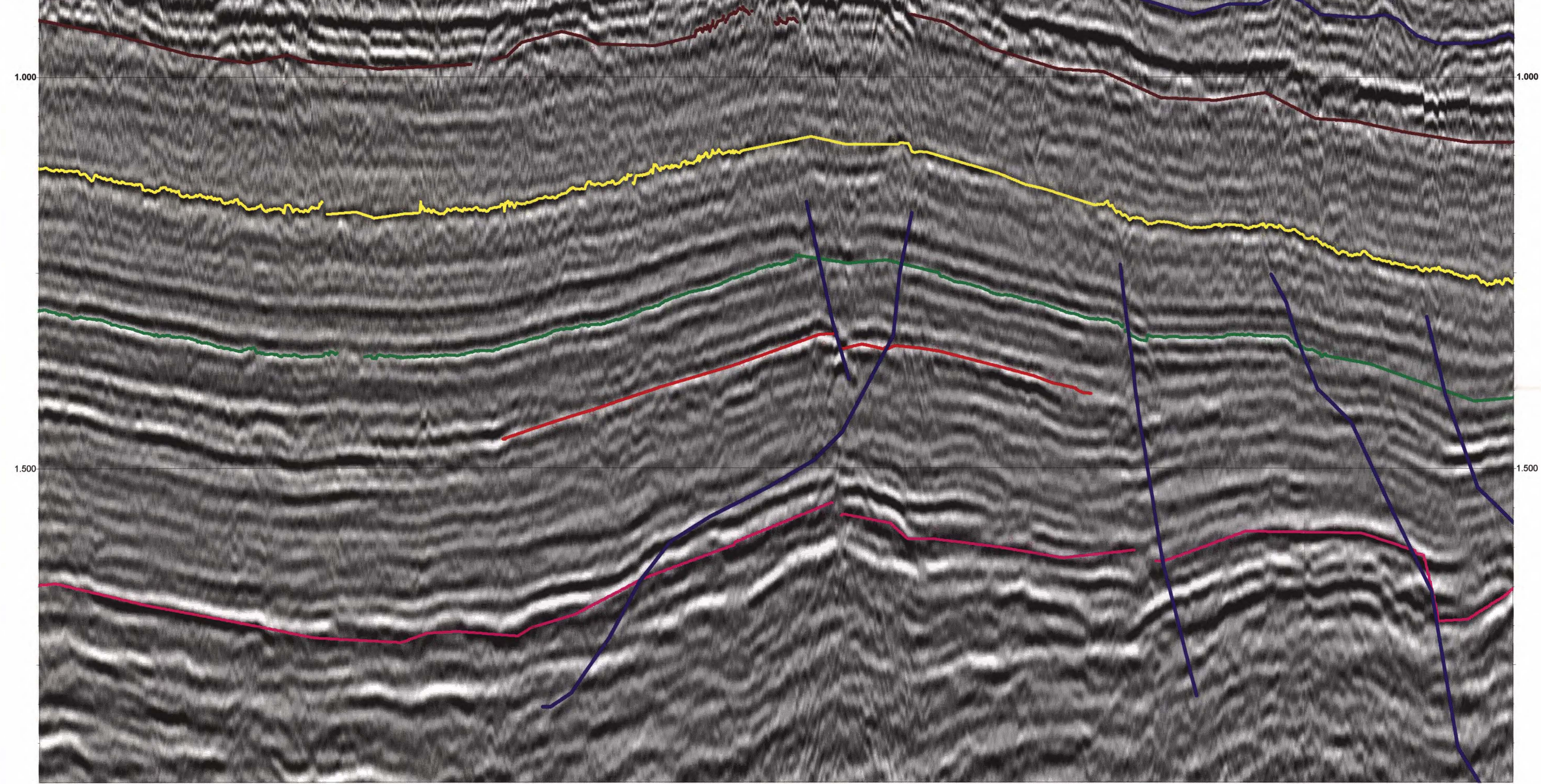
BARRAMUNDI PROSPECT
TRACE AMPLITUDES
LINE BB96 - 14

ENCLOSURE 11

OR-0442A

558013

BB96-67, 1053 BB96-65, 1519 BB96-14, 1634 BB96-01, 1138 TQH5-65S, BB96-12, 11093, 1431-28S TNK4-27S, 93 TQH5-29A:BB96-10, 1548 1233:BB96-09, 1356:BB96-08, 12896-11, 1285 TNK4:BB96-06, 1518 1300-71:BB96-15, 1330 TQH5-33:BB96-04, 1467 23:BB96-19, 1386 TNK4-6:BB96-21, 1206 BB96-23, 1432



3.849
3.618
3.387
3.156
2.925
2.694
2.463
2.232
2.001
1.770
1.540
1.309
1.078
0.847
0.616
0.385
0.154
-0.077
-0.308
-0.539
-0.770
-1.001
-1.232
-1.463
-1.693
-1.924
-2.155
-2.386
-2.617
-2.848
-3.079
-3.310
-3.541
-3.849

5 cm

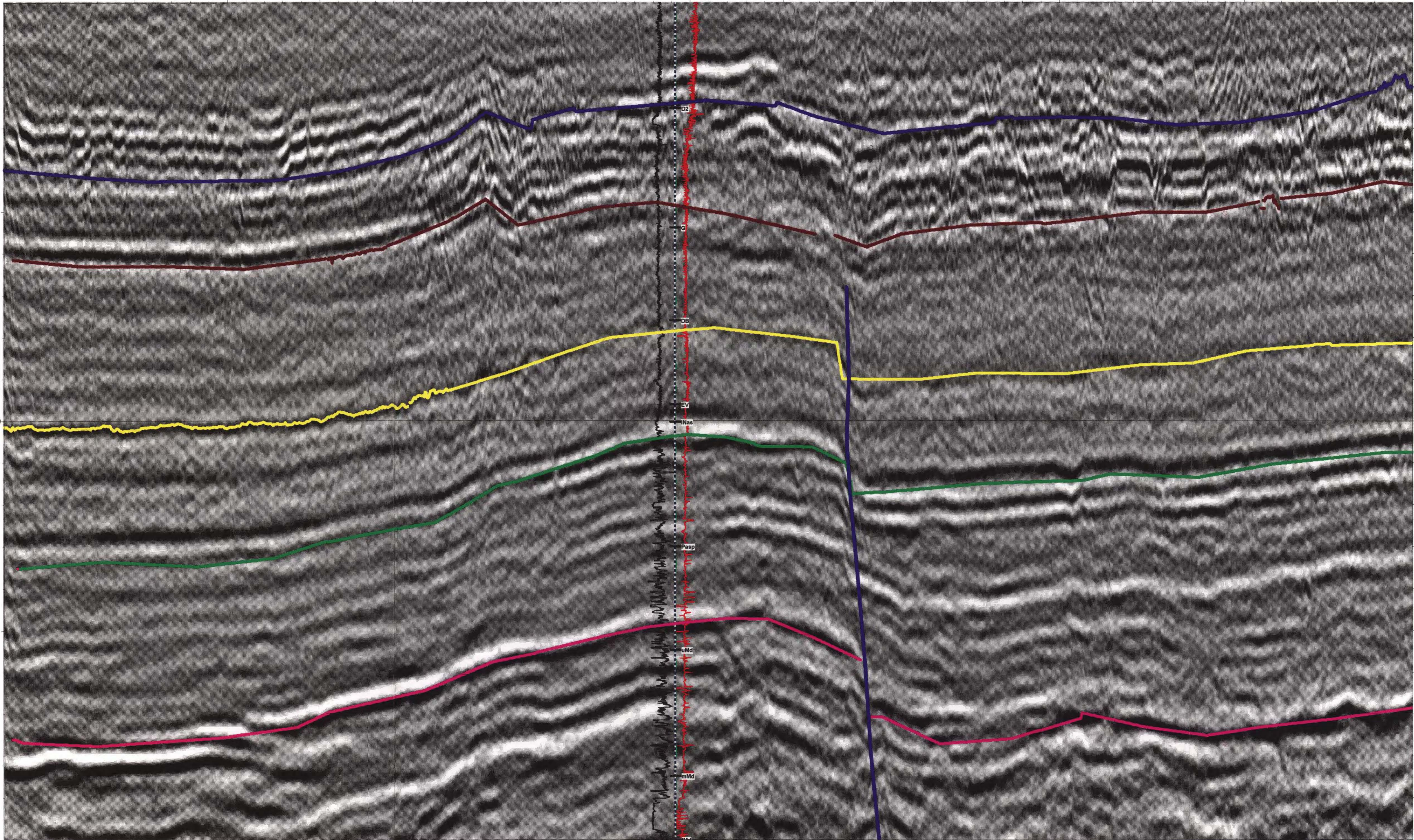
BARRAMUNDI PROSPECT
TRACE AMPLITUDES
LINE BB96 - 50

ENCLOSURE 12
OR-0442 A

410522

SP: 2240.0 2140.0 2040.0 1940.0 1840.0 1740.0 1640.0 1540.0

TQH5-87S, 196 TNK4-10S, 462 TNK4-55S, 1492
- BB96-54 -
1640.0



1.500

1.500

3.832
3.602
3.372
3.142
2.912
2.682
2.452
2.222
1.992
1.763
1.533
1.303
1.073
0.843
0.613
0.383
0.153
-0.077
-0.307
-0.536
-0.766
-0.996
-1.226
-1.456
-1.686
-1.916
-2.146
-2.376
-2.606
-2.835
-3.065
-3.295
-3.525
-3.832

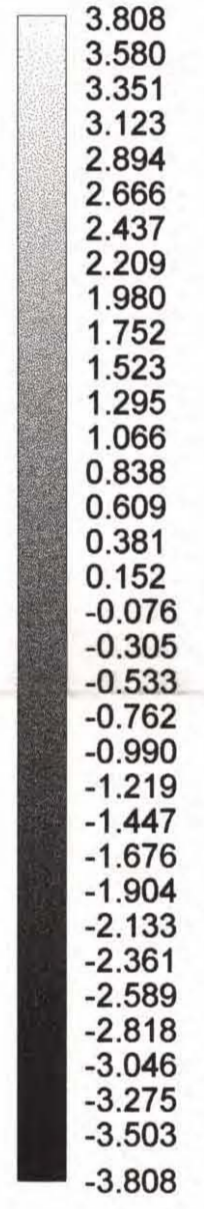
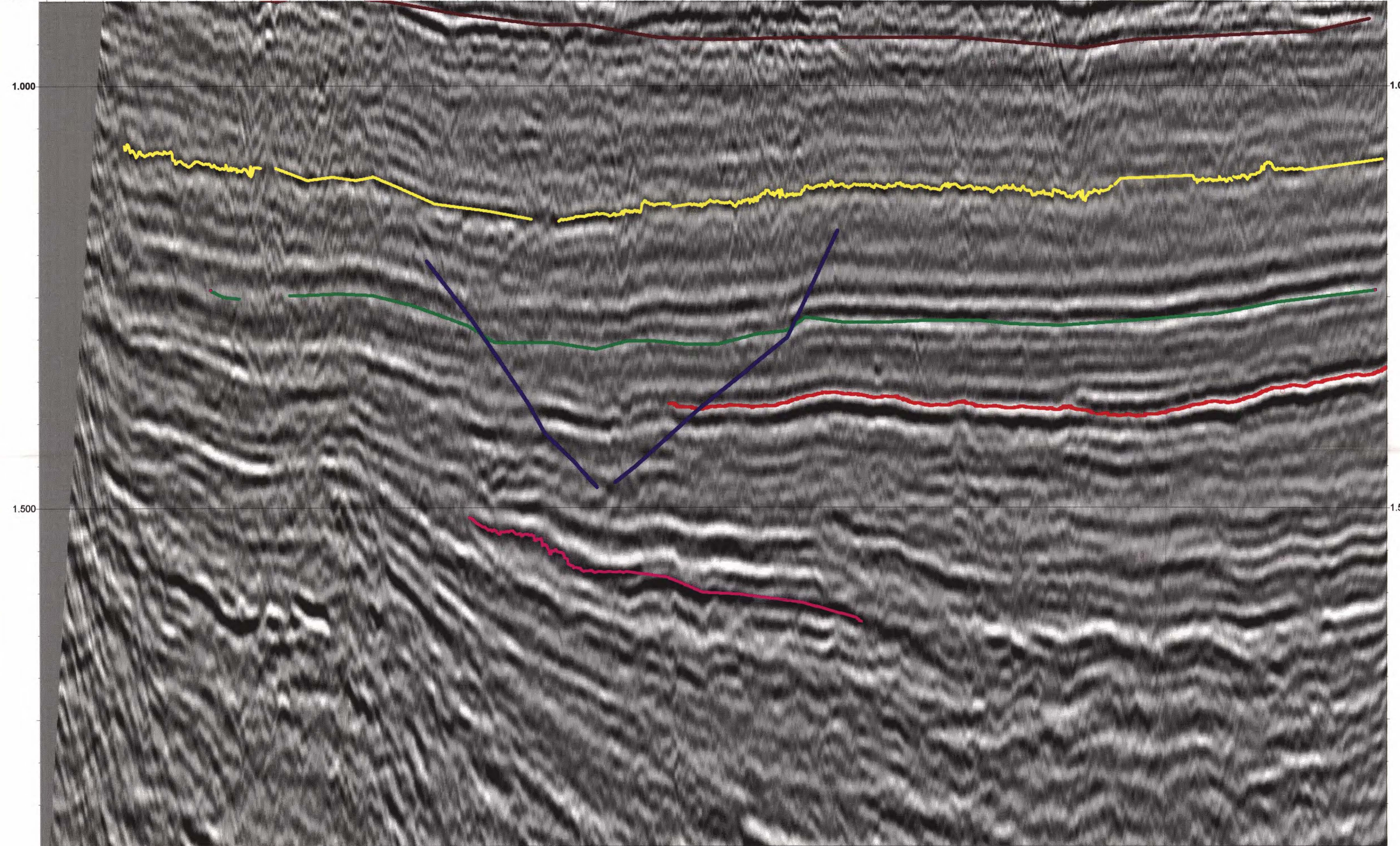
5 cm

YOLLA FIELD
TRACE AMPLITUDES
LINE BB96 - 54

558015

ENCLOSURE 13
OR-0442A

SP: 940.0 BS90B-1AS, 1777 1040.0 1140.0 BB96-71, 1333 1240.0 BB96-69, 1280 BB96-67, 1334 - BB96-56 - 1340.0 BB96-65, 1280 1440.0 BB96-01, 1335 TQH5-65S, 844 BB96-03, 1275 TNK4-27S, 206 1540.0 1640.0



5 cm

BARRAMUNDI PROSPECT
TRACE AMPLITUDES
LINE BB96 - 56

558016

ENCLOSURE 14
OR-0443A

TNK4-1BB96-14, 1488 BB96-12, 11636-50, 1BB96-10, 160BB96-08, 115BB96-06, 17216-56, 1BB96-04, 1145IK4-6S, 389 BB96-02, 1630

SP: -40.0 60.0 160.0 260.0 360.0 460.0

1.000 1.000

1.500 1.500

- 3.679
- 3.458
- 3.237
- 3.017
- 2.796
- 2.575
- 2.354
- 2.134
- 1.913
- 1.692
- 1.471
- 1.251
- 1.030
- 0.809
- 0.589
- 0.368
- 0.147
- 0.074
- 0.294
- 0.515
- 0.736
- 0.956
- 1.177
- 1.398
- 1.619
- 1.839
- 2.060
- 2.281
- 2.502
- 2.722
- 2.943
- 3.164
- 3.384
- 3.679

558017

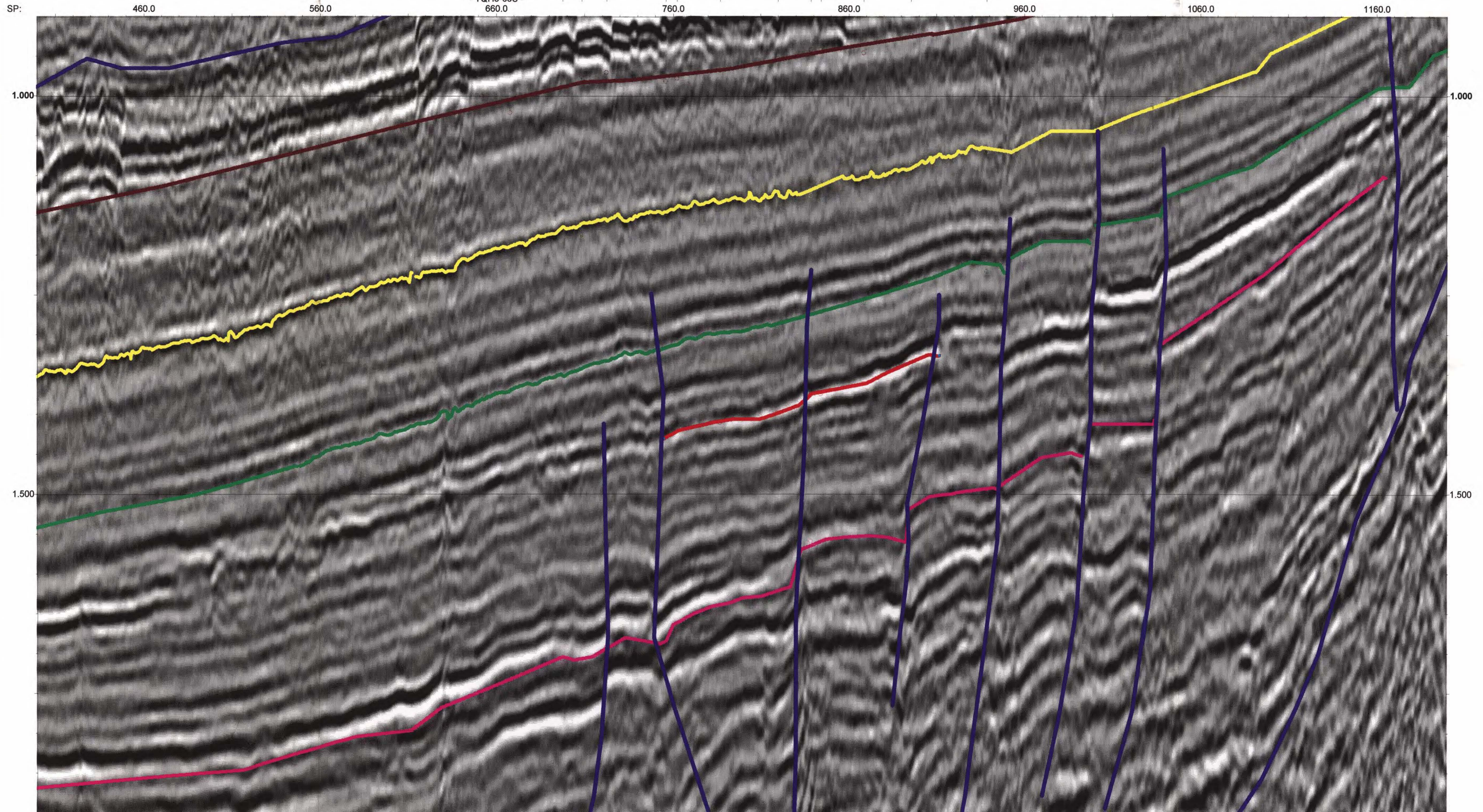
BARRAMUNDI PROSPECT

TRACE AMPLITUDES
LINE TNK4 - 27

5 cm

ENCLOSURE 15
OR-0442 A

TNK4-1BB96-14, 1566B9/BB96-12, 1085S, 98CBB96-10, 168BB96-08, 108CBB96-06, 17976-56, 1BB96-04, 1070IK4-6S, 451 BB96-02, 1703
- TQH5-65S -



3.743
3.519
3.294
3.070
2.845
2.620
2.396
2.171
1.947
1.722
1.497
1.273
1.048
0.824
0.599
0.374
0.150
-0.075
-0.299
-0.524
-0.749
-0.973
-1.198
-1.422
-1.647
-1.872
-2.096
-2.321
-2.546
-2.770
-2.995
-3.219
-3.444
-3.743

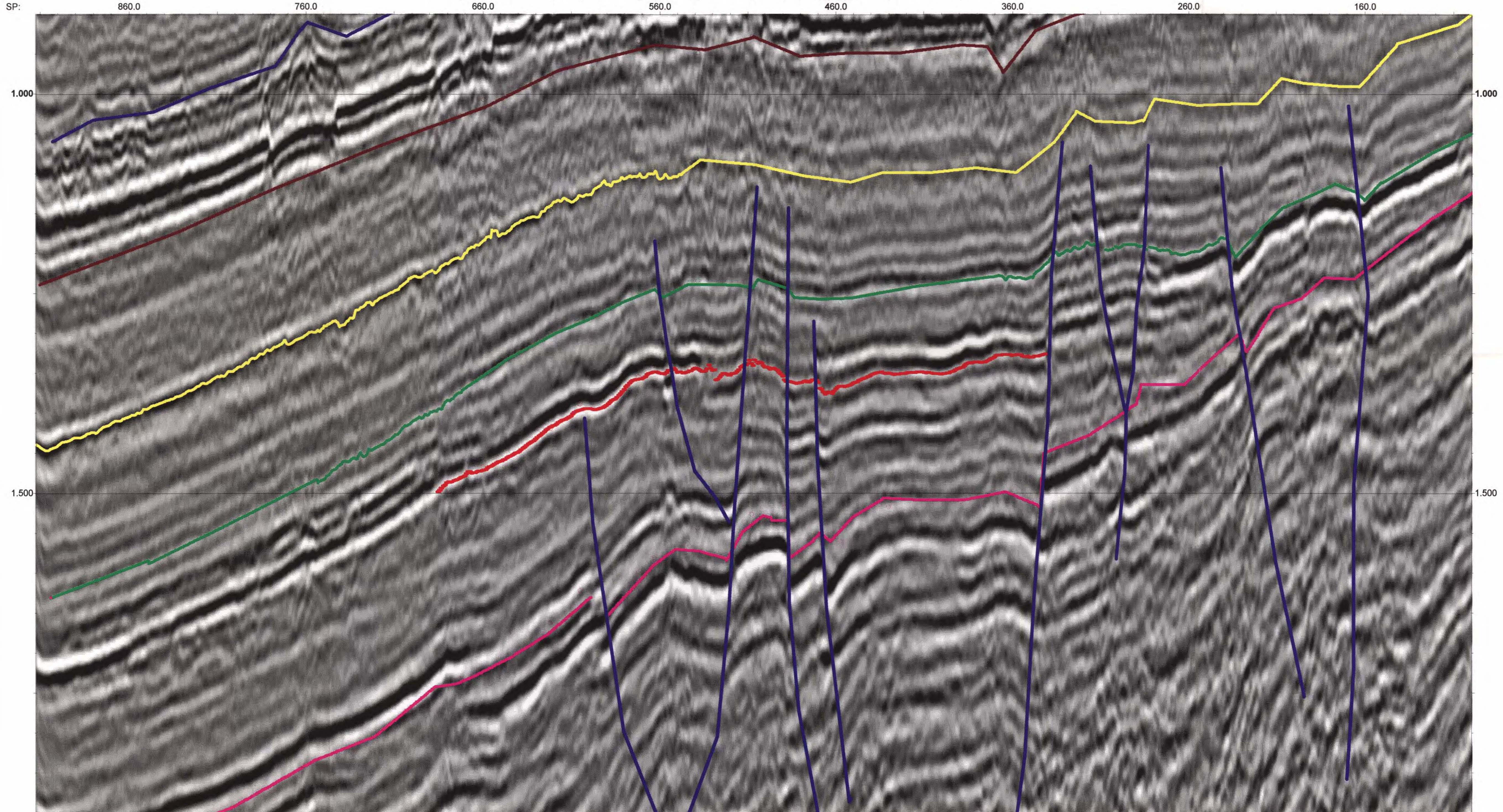
558018

BARRAMUNDI PROSPECT
TRACE AMPLITUDES
LINE TQH5 - 65

5 cm

ENCLOSURE 16
OR-0442 A

TNK4-BB96-14, 1367 BB96-12, 12848S, 81BB96-10, 1482BB96-08, 127BB96-06, 15984AS, 2BB96-04, 1269IK4-6S, 284 BB96-02, 1505
- TQH5-67 -



3.737
3.513
3.288
3.064
2.840
2.616
2.392
2.167
1.943
1.719
1.495
1.270
1.046
0.822
0.598
0.374
0.149
-0.075
-0.299
-0.523
-0.747
-0.972
-1.196
-1.420
-1.644
-1.868
-2.093
-2.317
-2.541
-2.765
-2.989
-3.214
-3.438
-3.737

BARRAMUNDI PROSPECT
TRACE AMPLITUDES
LINE TQH5 - 67

5 cm

558019

ENCLOSURE 17
CR-0442 A