

Company: Origin Energy Resources Ltd.

Well: Trefoil-1

Field: Trefoil

Rig: ENSCO 102

Country: Australia

1-11/16" Enerjet Gun
1:200 Scale

ENSCO 102

Trefoil

GDA94 Zone 55

Trefoil-1

Origin Energy Resources Ltd.

LOCATION

GDA94 Zone 55

Northings 5,586,346 m

Eastings 361,028 m

Elev.: K.B. 39.9 m

G.L. -68.9 m

D.F. 39.9 m

Permanent Datum: _____

Mean Sea Level _____

Elev.: 0 m _____

Log Measured From: _____

Drill Floor (RT) _____

39.9 m above Perm. Datum

Drilling Measured From: _____

Drill Floor (RT) _____

State: Tasmania

Max. Well Deviation 0.16 deg

Longitude 145 22' 30.87"E

Latitude 39 51' 41.58"S

Logging Date	14-Dec-2004		
Run Number	Suite-1 Run-14		
Depth Driller	3400.71 m		
Schlumberger Depth	3075 m		
Bottom Log Interval	3046.5 m		
Top Log Interval	3040.5 m		
Casing Fluid Type	Produced Gas		
Salinity			
Density			
Fluid Level	0 m		
BIT/CASING/TUBING STRING			
Bit Size	8.500 in		
From	2421 m		
To	3543.13 m		
Casing/Tubing Size	6.625 in		
Weight	24 lbn/ft		
Grade	L80		
From	2421 m		
To	3543.13 m		
Maximum Recorded Temperatures			
Logger On Bottom	14-Dec-2004	0:34	
Unit Number	571	AUSL	
Recorded By	G. Ruthven / C. Bassignana		
Witnessed By	D. Barrow / M. Nazarczyk		

PVT DATA				Run 1	
Oil Density					
Water Salinity					
Gas Gravity					
Bo					
Bw					
1/Bg					
Bubble Point Pressure					
Bubble Point Temperature					
Solution GOR					
Maximum Deviation				0.16 deg	
CEMENTING DATA					
Primary/Squeeze				Primary	
Casing String No				4	
Lead Cement Type					
Volume					
Density				1.89325 g/cm3	
Water Loss					
Additives					
Tail Cement Type				ABC "G" Cement	
Volume				119 m3	
Density				1.89325 g/cm3	
Water Loss				113 cm3	
Additives				D066,Gasstop,D080	
Expected Cement Top				2319 m	
Logging Date					
Run Number					
Depth Driller					
Schlumberger Depth					
Bottom Log Interval					
Top Log Interval					
Casing Fluid Type					
Salinity					
Density					
Fluid Level					
BIT/CASING/TUBING STRING					
Bit Size					
From					
To					
Casing/Tubing Size					
Weight					
Grade					
From					
To					
Maximum Recorded Temperatures					
Logger On Bottom					
Unit Number					
Recorded By					
Witnessed By					

DEPTH SUMMARY LISTING

Depth System Equipment	
------------------------	--

Depth Control Parameters	
--------------------------	--

Depth Control Remarks	
-----------------------	--









- DISCLAIMER**
- THE USE OF AND RELIANCE UPON THIS RECORDED-DATA BY THE HEREIN NAMED COMPANY (AND ANY OF ITS AFFILIATES, PARTNERS, REPRESENTATIVES, AGENTS, CONSULTANTS AND EMPLOYEES) IS SUBJECT TO THE TERMS AND CONDITIONS AGREED UPON BETWEEN SCHLUMBERGER AND THE COMPANY, INCLUDING: (a) RESTRICTIONS ON USE OF THE RECORDED-DATA; (b) DISCLAIMERS AND WAIVERS OF WARRANTIES AND REPRESENTATIONS REGARDING COMPANY'S USE OF AND RELIANCE UPON THE RECORDED-DATA; AND (c) CUSTOMER'S FULL AND SOLE RESPONSIBILITY FOR ANY INFERENCE DRAWN OR DECISION MADE IN CONNECTION WITH THE USE OF THIS RECORDED-DATA.

REMARKS: RUN NUMBER 1
Subsequent run in hole. Log correlated to Run . SP-HRLA-PEX-CMR dated 2-Nov-04.

Maximum temperature not recorded in this run.

RUN 1			SERVICE ORDER #:		
SERVICE ORDER #:			AUSL0425934		
PROGRAM VERSION:			12C0-301		
FLUID LEVEL:			0 m		

EQUIPMENT DESCRIPTION

RUN 1			
SURFACE EQUIPMENT			
WITM (SHM)			
DOWNHOLE EQUIPMENT			
AH-Slotted Weights AH-Slotted Weights		16.58	
MH-22 MH-22		14.52	
EQF-43 EQF-43		14.04	
EQF-38 EQF-38		12.21	
PGGT-C PGGC PGGH-A		10.99	
	<div>Gamma Ray Casing Co Secure Se Tension</div> <div><div>0.48</div><div>TOOL ZERO</div></div>		
AH-Flex Joint AH-Flex Joint		9.03	
MPD-F MPD-F		8.42	
SHM_GUN GUN		7.92	

TOOL BOTTOM

MAXIMUM STRING DIAMETER 1.69 IN
MEASUREMENTS RELATIVE TO TOOL ZERO
ALL LENGTHS IN METERS

Client: Origin Energy Resources Ltd.

Well: Trefoil-1

Field: Trefoil

State: Tasmania

Country:Australia

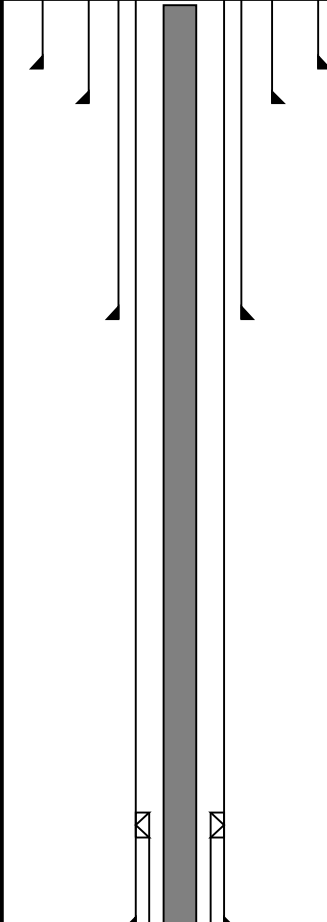
Rig Name:

Reference DatumMean Sea Level

Elevation: 39.9 m

Drawing Date12/6/2004

API #:

Production String	(in)		(m)	Well Schematic	(m)	(in)		Casing String
	OD	ID	MD		MD	OD	ID	
Tubing	3.500		13.4		0.0	30.000		Casing String
					142.6	30.000		Casing Shoe
					214.6	20.000		Casing Shoe
					659.6	13.375	12.615	Casing Shoe
					2272.2	9.625	6.625	Liner Hanger

Company: Origin Energy Resources Ltd.

Well: Trefoil-1

Output DLIS Files

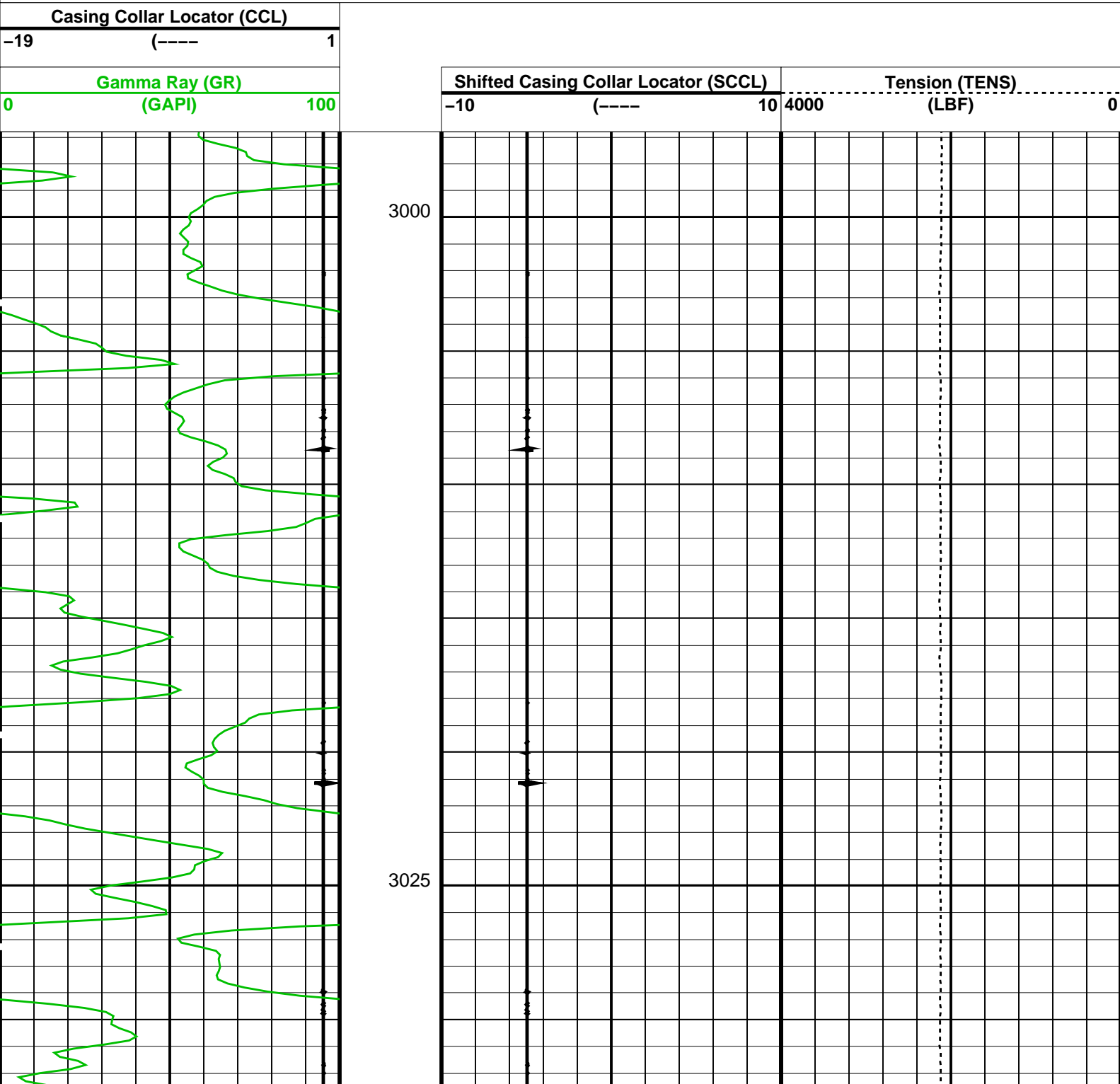
DEFAULT	PERFO_109LUP	FN:149	PRODUCER	14-Dec-2004 00:22	3072.5 M	2996.8 M
BACKUP_ENERJEPERFO_109LUP		FN:150	PRODUCER	14-Dec-2004 00:22	3072.5 M	2996.8 M

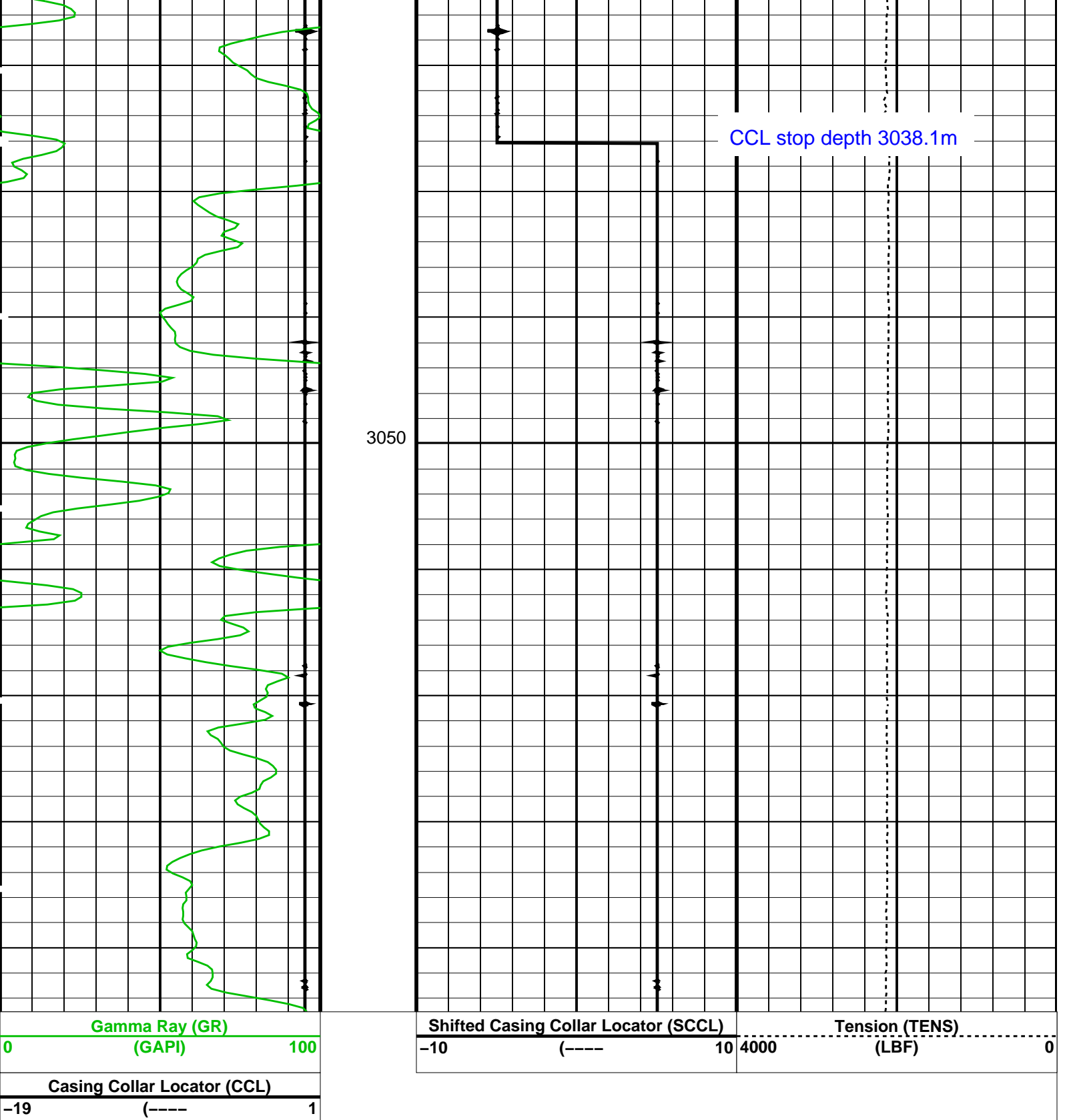
OP System Version: 12C0-301
MCM

SHM_GUN	12C0-301	PGGT-C	12C0-301
---------	----------	--------	----------

PIP SUMMARY

Time Mark Every 60 S





PIP SUMMARY

Time Mark Every 60 S

Format: PERFO Vertical Scale: 1:200

Graphics File Created: 14-Dec-2004 00:22

OP System Version: 12C0-301
MCM

SHM_GUN 12C0-301 PGGT-C 12C0-301

Output DLIS Files

DEFAULT PERFO_109LUP FN:149 PRODUCER 14-Dec-2004 00:22

Schlumberger

Correlation Log

MAXIS Field Log

Company: Origin Energy Resources Ltd.

Well: Trefoil-1

Output DLIS Files

DEFAULT	PERFO_108LUP	FN:147	PRODUCER	14-Dec-2004 00:06	3074.8 M	3002.4 M
BACKUP_ENERJEPERFO_108LUP		FN:148	PRODUCER	14-Dec-2004 00:05	3074.8 M	3002.4 M

OP System Version: 12C0-301

MCM

SHM_GUN	12C0-301	PGGT-C	12C0-301
---------	----------	--------	----------

PIP SUMMARY

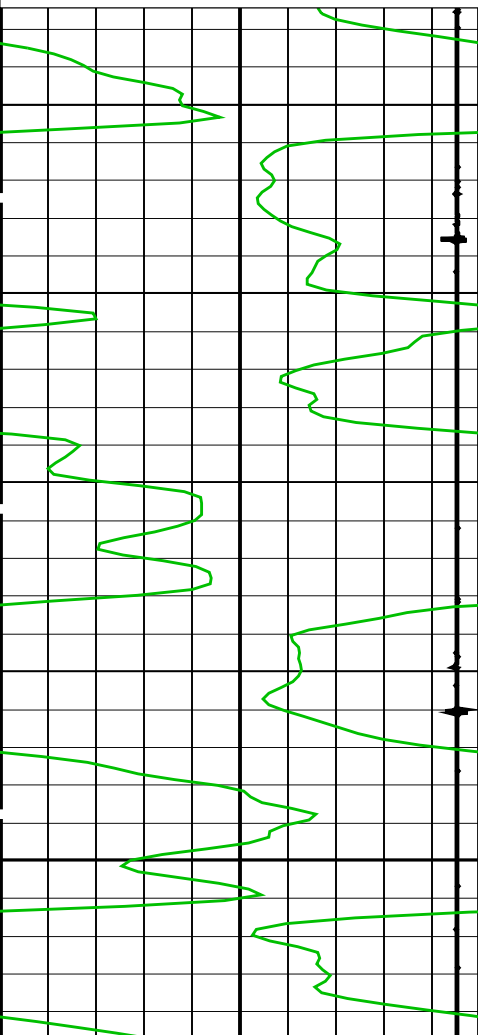
Time Mark Every 60 S

Casing Collar Locator (CCL)

-19 (----) 1

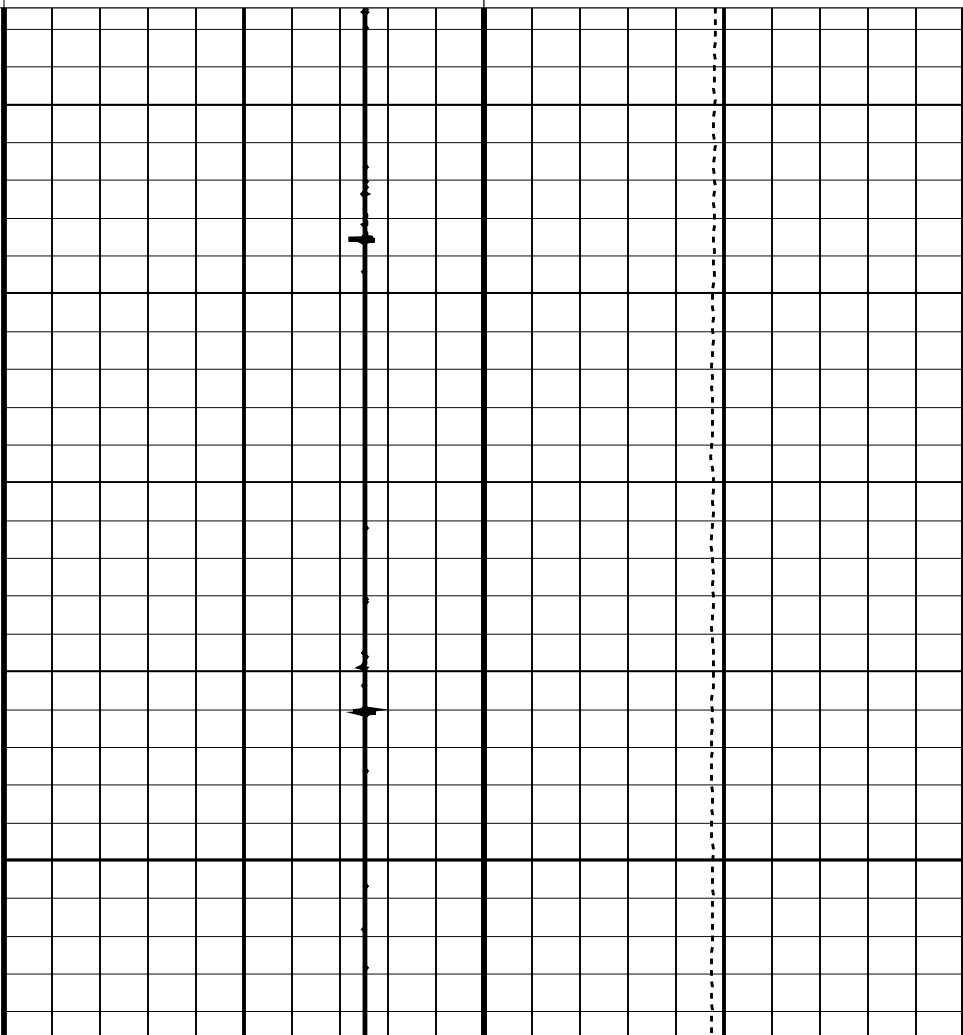
Gamma Ray (GR)

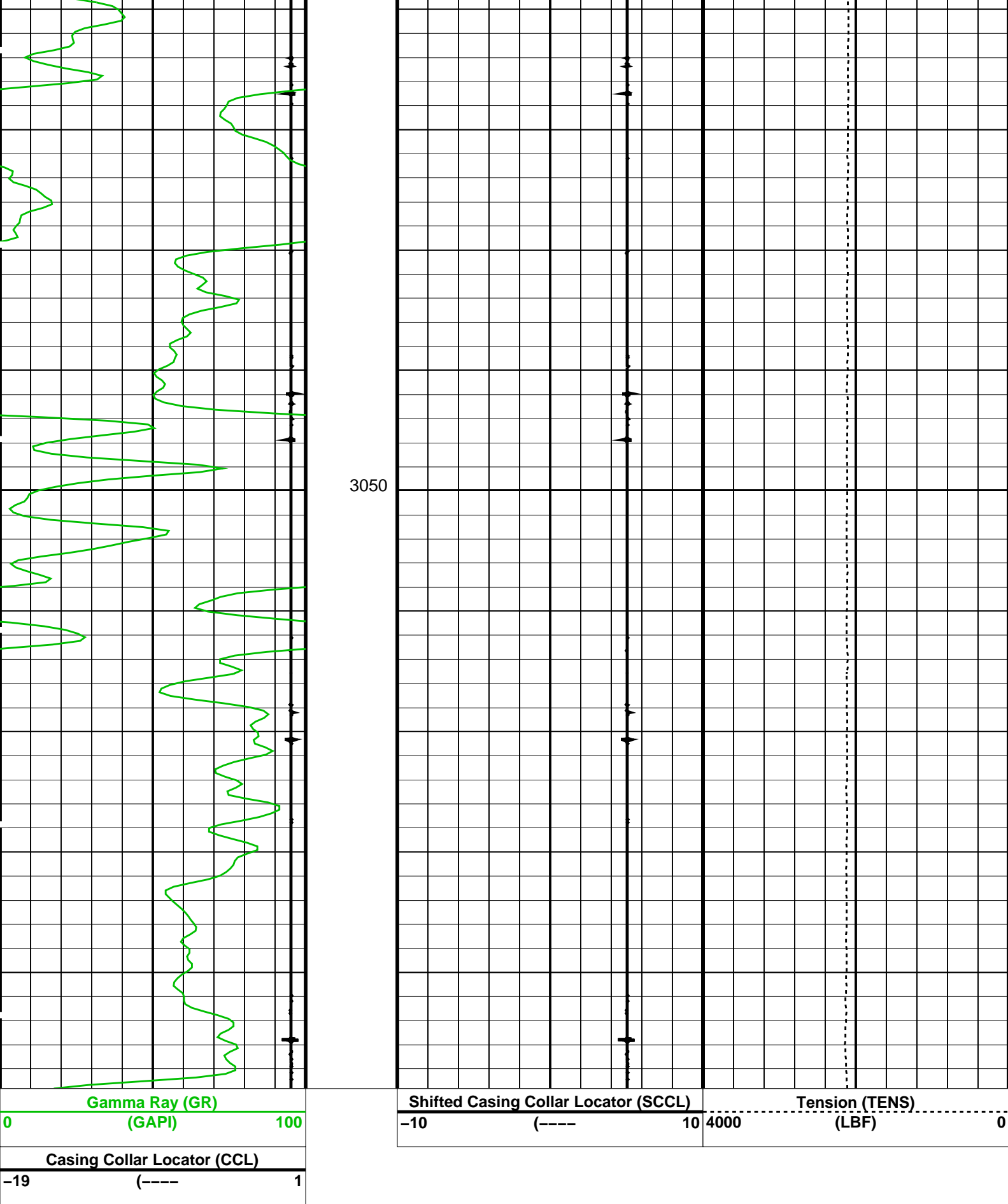
0 (GAPI) 100



Shifted Casing Collar Locator (SCCL)		Tension (TENS)	
-10	(----) 10	4000	(LBF) 0

3025





PIP SUMMARY

Time Mark Every 60 S

Format: PERFO Vertical Scale: 1:200

Graphics File Created: 14-Dec-2004 00:06

OP System Version: 12C0-301
MCM

SHM_GUN	12C0-301	PGGT-C	12C0-301
Output DLIS Files			
DEFAULT	PERFO_108LUP	FN:147	PRODUCER 14-Dec-2004 00:06
BACKUP_ENERJET	PERFO_108LUP	FN:148	PRODUCER 14-Dec-2004 00:05
Company: Origin Energy Resources Ltd.			
			Schlumberger
Well:	Trefoil-1		
Field:	Trefoil		
Rig:	ENSCO 102		
Country:	Australia		
1-11/16" Enerjet Gun			
1:200 Scale			