

Company: Origin Energy Resources Ltd.

Well: Trefoil-1

Field: Trefoil

Rig: ENSCO 102

Country: Australia

2-3/8" Tubing Plug
Plug Setting Record
1:200 Scale

ENSCO 102	
Field:	Trefoil
Location:	GDA94 Zone 55
Well:	Trefoil-1
Company:	Origin Energy Resources Ltd.
LOCATION	
GDA94 Zone 55	Elev.: K.B. 39.9 m
Northings 5,586,346 m	G.L. -68.9 m
Eastings 361,028 m	D.F. 39.9 m
Permanent Datum:	Mean Sea Level
Log Measured From:	Drill Floor (RT)
Drilling Measured From:	Drill Floor (RT)
State: Tasmania	Max. Well Deviation 0.16 deg
	Longitude 145 22' 30.87"E
	Latitude 39 51' 41.58"S

Logging Date	13-Dec-2004
Run Number	Suite1Runs12-13
Depth Driller	3400.71 m
Schlumberger Depth	3125.3 m
Bottom Log Interval	3125.3 m
Top Log Interval	3125.3 m
Casing Fluid Type	Produced Gas
Salinity	
Density	
Fluid Level	0 m
BIT/CASING/TUBING STRING	
Bit Size	8.500 in
From	2421 m
To	3543.13 m
Casing/Tubing Size	6.625 in
Weight	24 lbn/ft
Grade	L80
From	2421 m
To	3543.13 m
Maximum Recorded Temperatures	
Logger On Bottom	13-Dec-2004
Unit Number	571
Recorded By	G. Ruthven / C. Bassignana
Witnessed By	J.Lennon / M.Llanzer

PVT DATA				Run 1	
Oil Density					
Water Salinity					
Gas Gravity					
Bo					
Bw					
1/Bg					
Bubble Point Pressure					
Bubble Point Temperature					
Solution GOR					
Maximum Deviation				0.16 deg	
CEMENTING DATA					
Primary/Squeeze				Primary	
Casing String No				4	
Lead Cement Type					
Volume					
Density				1.89325 g/cm3	
Water Loss					
Additives					
Tail Cement Type				ABC "G" Cement	
Volume				119 m3	
Density				1.89325 g/cm3	
Water Loss				113 cm3	
Additives				D066,Gasstop,D080	
Expected Cement Top					
Logging Date				2319 m	
Run Number					
Depth Driller					
Schlumberger Depth					
Bottom Log Interval					
Top Log Interval					
Casing Fluid Type					
Salinity					
Density					
Fluid Level					
BIT/CASING/TUBING STRING					
Bit Size					
From					
To					
Casing/Tubing Size					
Weight					
Grade					
From					
To					
Maximum Recorded Temperatures					
Logger On Bottom					
Unit Number					
Recorded By					
Witnessed By					

DEPTH SUMMARY LISTING

Depth System Equipment

Depth Measuring Device		Tension Device		Logging Cable	
Type:	IDW-E	Type:	CMTD-B/A	Type:	2-32ZT
Serial Number:	1914	Serial Number:	2336	Serial Number:	26308
Calibration Date:	24-Mar-2004	Calibration Date:	28-Apr-2004	Length:	7000.04 M
Calibrator Serial Number:	9	Calibrator Serial Number:	1051	Conveyance Method:	Wireline
Calibration Cable Type:	2-23ZT	Calibration Gain:	0.87	Rig Type:	Offshore_Fixed
Wheel Correction 1:	-5	Calibration Offset:	115.00		
Wheel Correction 2:	-5				

Depth Control Parameters	
Log Sequence:	Subsequent Trip To the Well
Reference Log Name:	USI-CBL-VDL-GR-CC
Reference Log Run Number:	9
Reference Log Date:	7-Dec-2004
Subsequent Trip Down Log Correction:	2.30 M

<ol style="list-style-type: none"> 1. Subsequent trip in hole. Log correlated to above reference log using CCL. 2. Primary depth reference IDW-E 3. 4. 5. 6.
--

THE USE OF AND RELIANCE UPON THIS RECORDED-DATA BY THE HEREIN NAMED COMPANY (AND ANY OF ITS AFFILIATES, PARTNERS, REPRESENTATIVES, AGENTS, CONSULTANTS AND EMPLOYEES) IS SUBJECT TO THE TERMS AND CONDITIONS AGREED UPON BETWEEN SCHLUMBERGER AND THE COMPANY, INCLUDING: (a) RESTRICTIONS ON USE OF THE RECORDED-DATA; (b) DISCLAIMERS AND WAIVERS OF WARRANTIES AND REPRESENTATIONS REGARDING COMPANY'S USE OF AND RELIANCE UPON THE RECORDED-DATA; AND (c) CUSTOMER'S FULL AND SOLE RESPONSIBILITY FOR ANY INFERENCE DRAWN OR DECISION MADE IN CONNECTION WITH THE USE OF THIS RECORDED-DATA.

OS1: 1.75" Drift
OS2: 1-11/16" Enerjet Gun
OS3:
OS4:
OS5:

Subsequent run in hole. Log correlated to Run 9, USI-CBL-VDL-GR-CCL dated 7-Dec-04.





A 1.75" drift was run first in order to confirm passage for plug (1.71" running OD). Drift was run to 3129m MD.

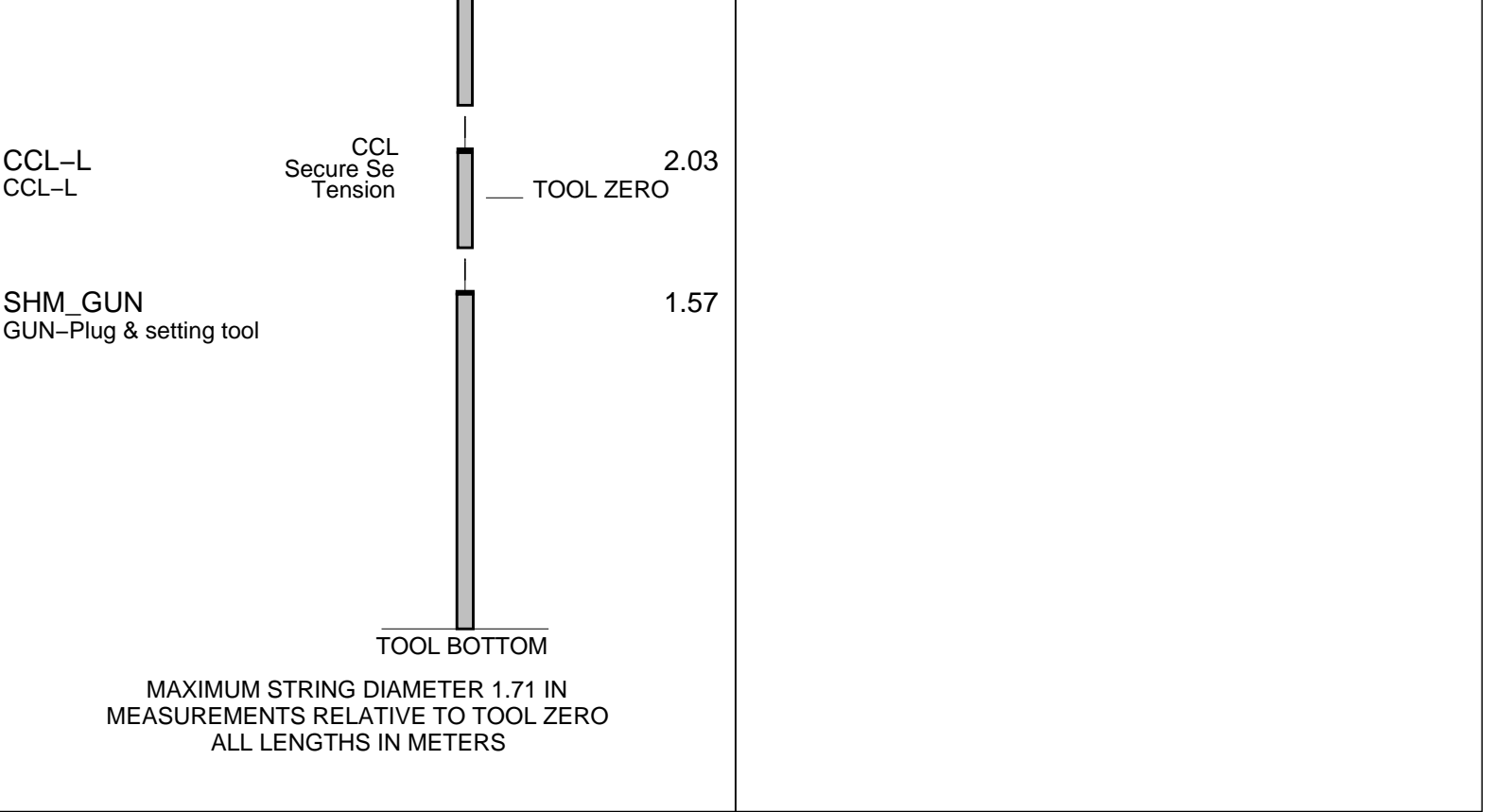
Plug was set with middle of elements at 3125.3m MD.

Maximum temperature not recorded in this run.					

RUN 1			RUN 2		
SERVICE ORDER #:		AUSL0425934	SERVICE ORDER #:		
PROGRAM VERSION:		12C0-301	PROGRAM VERSION:		
FLUID LEVEL:		0 m	FLUID LEVEL:		

EQUIPMENT DESCRIPTION

RUN 1		RUN 2	
SURFACE EQUIPMENT			
WITM (SHM)			
DOWNHOLE EQUIPMENT			
MH-22 MH-22		6.79	
EQF-38 EQF-38		6.31	
EQF-38 EQF-38		5.09	
EQF-43 EQF-43		3.86	



Client: Origin Energy Resources Ltd.

Drawing Date: 12/6/2004

Well: Trefoil-1

API #:

Field: Trefoil

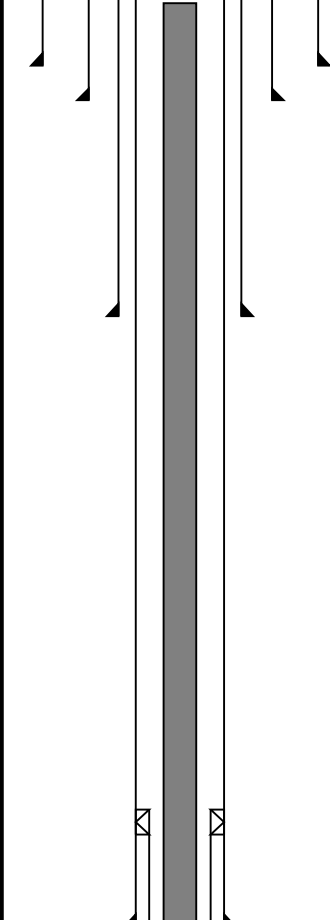
Rig Name:

State: Tasmania

Reference Datum: Mean Sea Level

Country: Australia

Elevation: 39.9 m

Production String	(in)		(m)	Well Schematic	(m)			Casing String
	OD	ID	MD		MD	OD	ID	
Tubing	3.500		13.4		0.0	30.000		Casing String
					142.6	30.000		Casing Shoe
					214.6	20.000		Casing Shoe
					659.6	13.375	12.615	Casing Shoe
					2272.2	9.625	6.625	Liner Hanger
						9.625	8.755	Casing Shoe

DST tools	5.000		2639.1						
Tubing, Drill Pipe & Drill Collars	5.000		2672.1						
DST tools	5.000		2898.3						
Packer	6.625	5.000	2938.4						
Packer			3119.4						
Tubing			3120.8						
TCP	4.500		3131.6						
						3141.0			Perforation Zone, 12.0 SPM
						3150.0			Perforation Zone Bottom
						3400.7			PBTD
						3458.0	6.625	5.921	Casing Shoe

Schlumberger

Operational Summary

MAXIS Field Log

PERFO2 Operational Summary Listing

Device	Status	Req Depth (M)	Obs Depth (M)	Time Used
GUN1	Used	3125.3	3125.3	Mon Dec 13 15:00:11 2004

Schlumberger

Shooting Log

Company: Origin Energy Resources Ltd.

Well: Trefoil-1

Output DLIS Files

DEFAULT	PERFO_089LUP	FN:120	PRODUCER	13-Dec-2004 14:58	3127.6 M	3108.7 M
BACKUP_PLUG	PERFO_089LUP	FN:121	PRODUCER	13-Dec-2004 14:58	3127.6 M	3108.7 M

OP System Version: 12C0-301

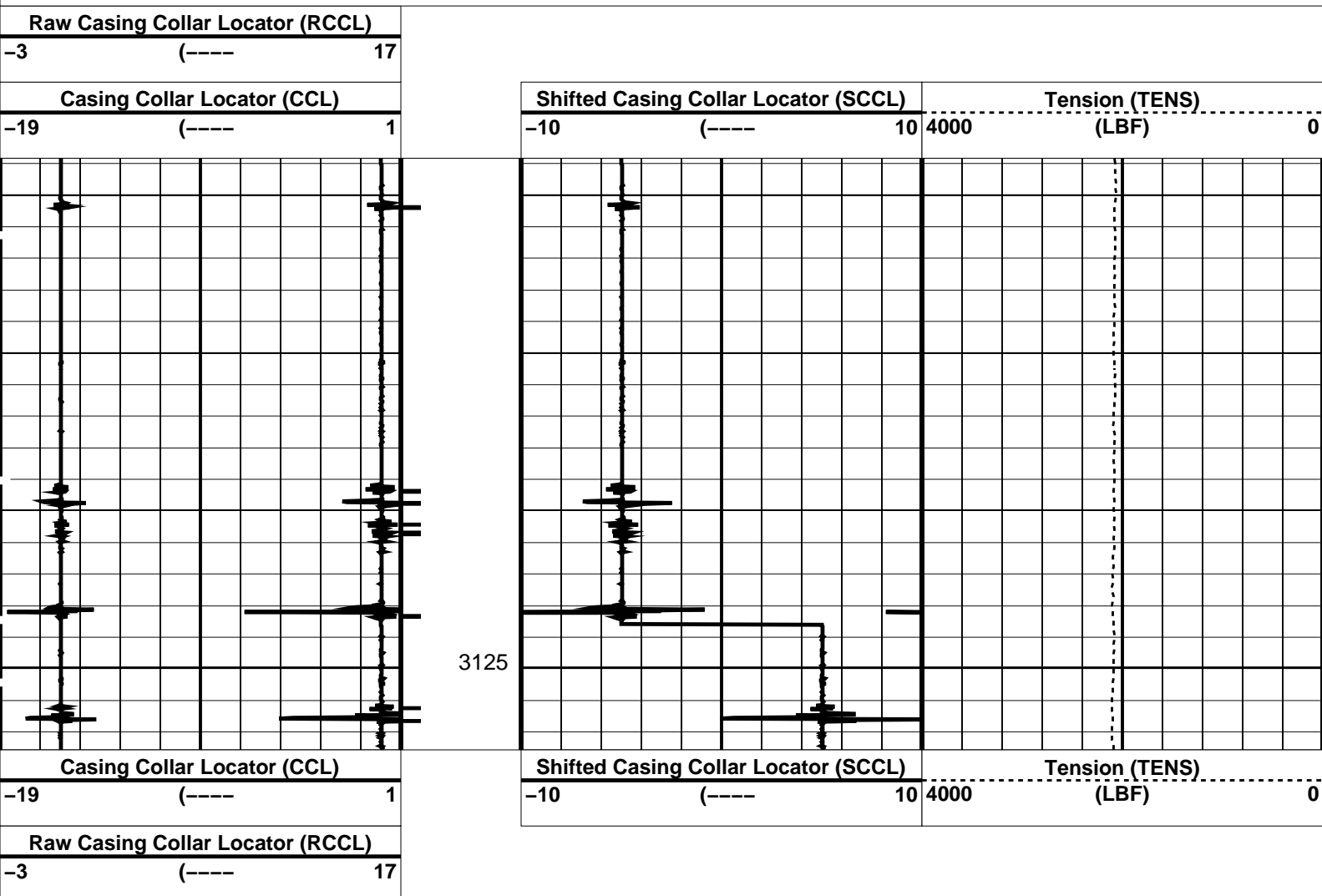
MCM

SHM_GUN	12C0-301	CCL-L	12C0-301
---------	----------	-------	----------

PIP SUMMARY

└─ Casing Collars

Time Mark Every 60 S



PIP SUMMARY

└─ Casing Collars

Time Mark Every 60 S

Parameters

DLIS Name	Description	Value
CCLD	CCL-L: Casing Collar Locator	12 IN
CCLT	CCL reset delay	0.3 V
CCLT	CCL Detection Level	

Format: PERFO Vertical Scale: 1:200

Graphics File Created: 13-Dec-2004 14:58

SHM_GUN 12C0-301 CCL-L 12C0-301

Output DLIS Files

DEFAULT	PERFO_089LUP	FN:120	PRODUCER	13-Dec-2004 14:58
BACKUP_PLUG	PERFO_089LUP	FN:121	PRODUCER	13-Dec-2004 14:58



Correlation Log

MAXIS Field Log

Company: Origin Energy Resources Ltd.

Well: Trefoil-1

Output DLIS Files

DEFAULT	PERFO_087LUP	FN:116	PRODUCER	13-Dec-2004 14:45	3064.2 M	3029.7 M
BACKUP_PLUG	PERFO_087LUP	FN:117	PRODUCER	13-Dec-2004 14:44	3064.2 M	3029.7 M

OP System Version: 12C0-301

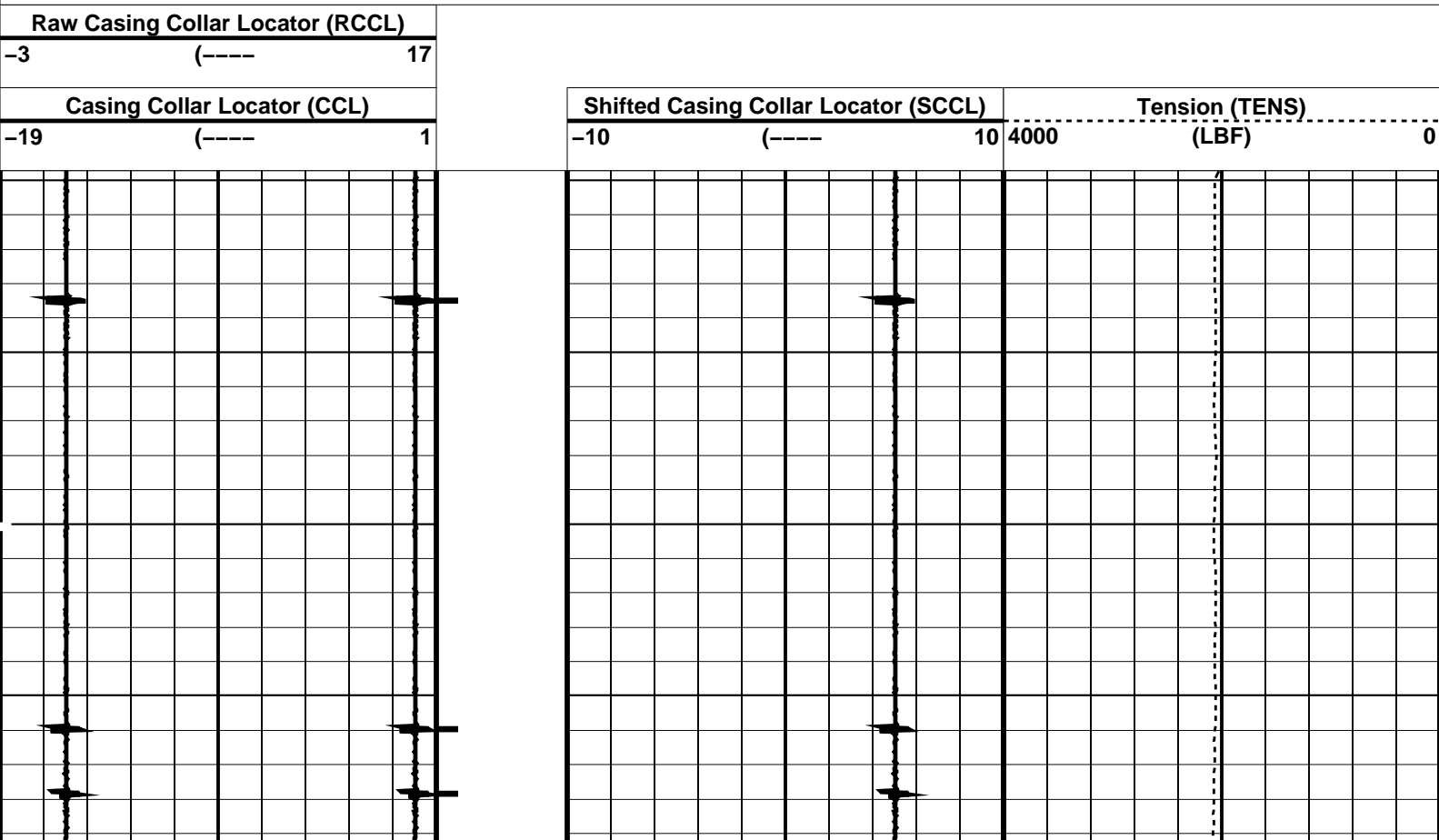
MCM

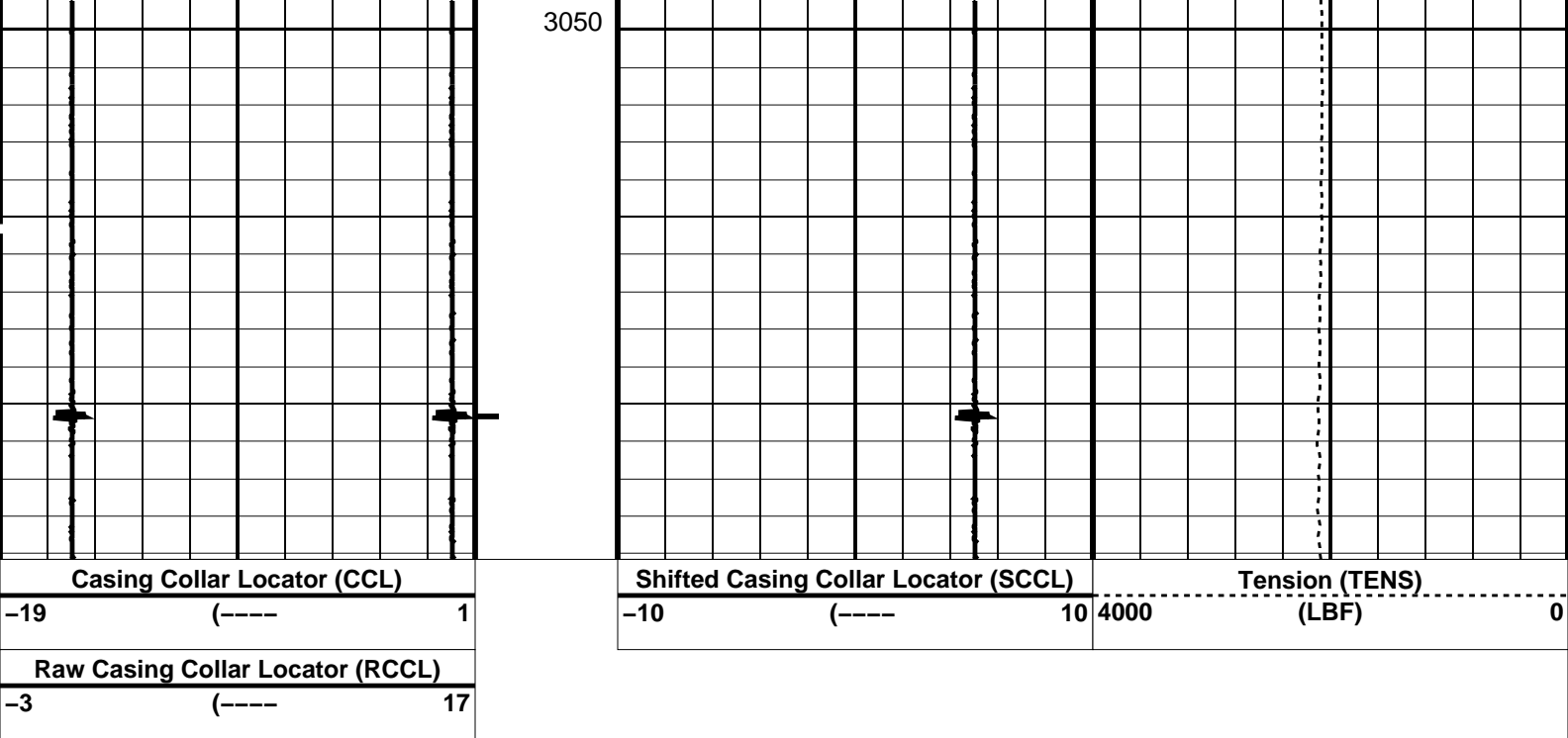
SHM_GUN 12C0-301 CCL-L 12C0-301

PIP SUMMARY

← Casing Collars

Time Mark Every 60 S





PIP SUMMARY

← Casing Collars

Time Mark Every 60 S

Parameters

DLIS Name	Description	Value
CCLD	CCL-L: Casing Collar Locator	12 IN
CCLT	CCL reset delay	0.3 V
	CCL Detection Level	

Format: PERFO Vertical Scale: 1:200

Graphics File Created: 13-Dec-2004 14:45

OP System Version: 12C0-301

MCM

SHM_GUN 12C0-301 CCL-L 12C0-301

Output DLIS Files

DEFAULT	PERFO_087LUP	FN:116	PRODUCER	13-Dec-2004 14:45
BACKUP_PLUG	PERFO_087LUP	FN:117	PRODUCER	13-Dec-2004 14:44

Company: **Origin Energy Resources Ltd.**

Schlumberger

Well: **Trefoil-1**
Field: **Trefoil**
Rig: **ENSCO 102**
Country: **Australia**

2-3/8" Tubing Plug
Plug Setting Record
1:200 Scale