



Input DLIS Files

02-Dec-2004 06:55

Output DLIS Files

DEFAULT

FMI\_DSI\_NGS\_075PUP

FN:72

PRODUCER

02-Dec-2004 07:48

3530.3 M

2386.7 M

OP System Version: 12C0-301

MCM

FIELD PRINT

FBST-B

12C0-301

DSST-B

12C0-301

HNGC-A

SPC-2602-NUCL

HNGS-BA

SPC-2602-NUCL

DTA-A

12C0-301

DTC-H

12C0-301

DTPC-A

12C0-301

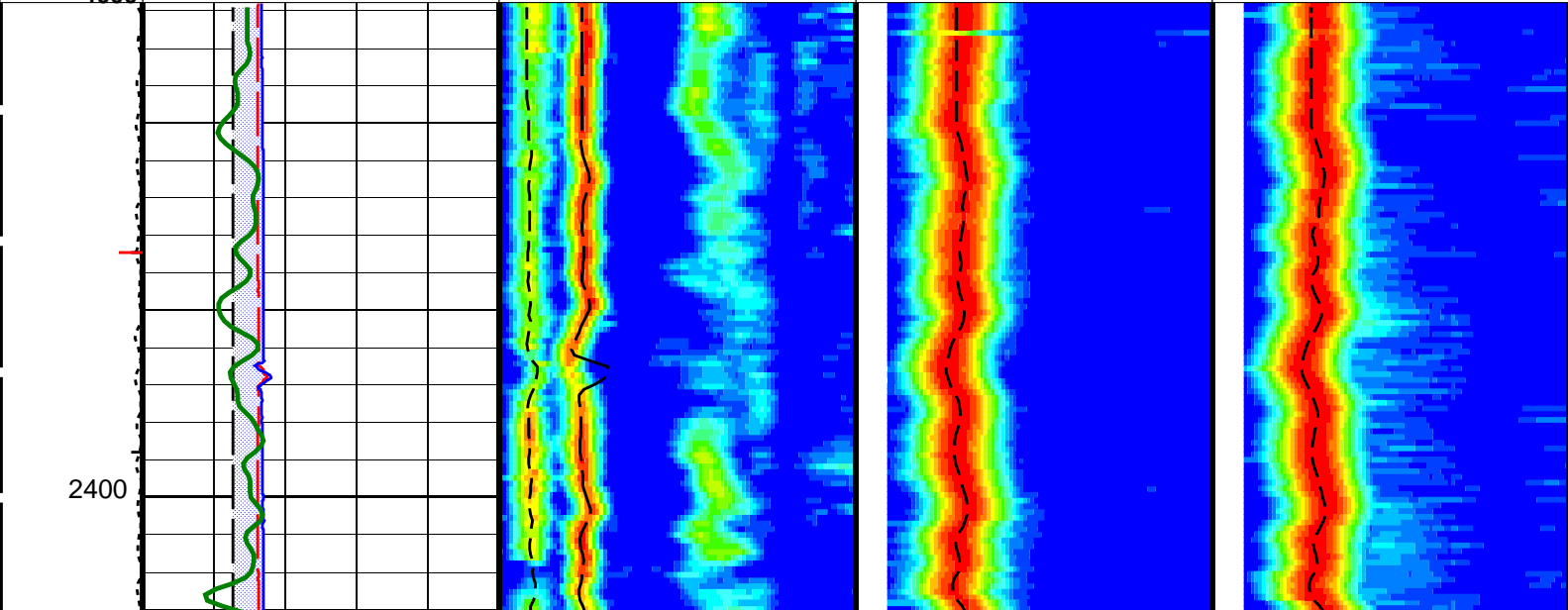
PIP SUMMARY

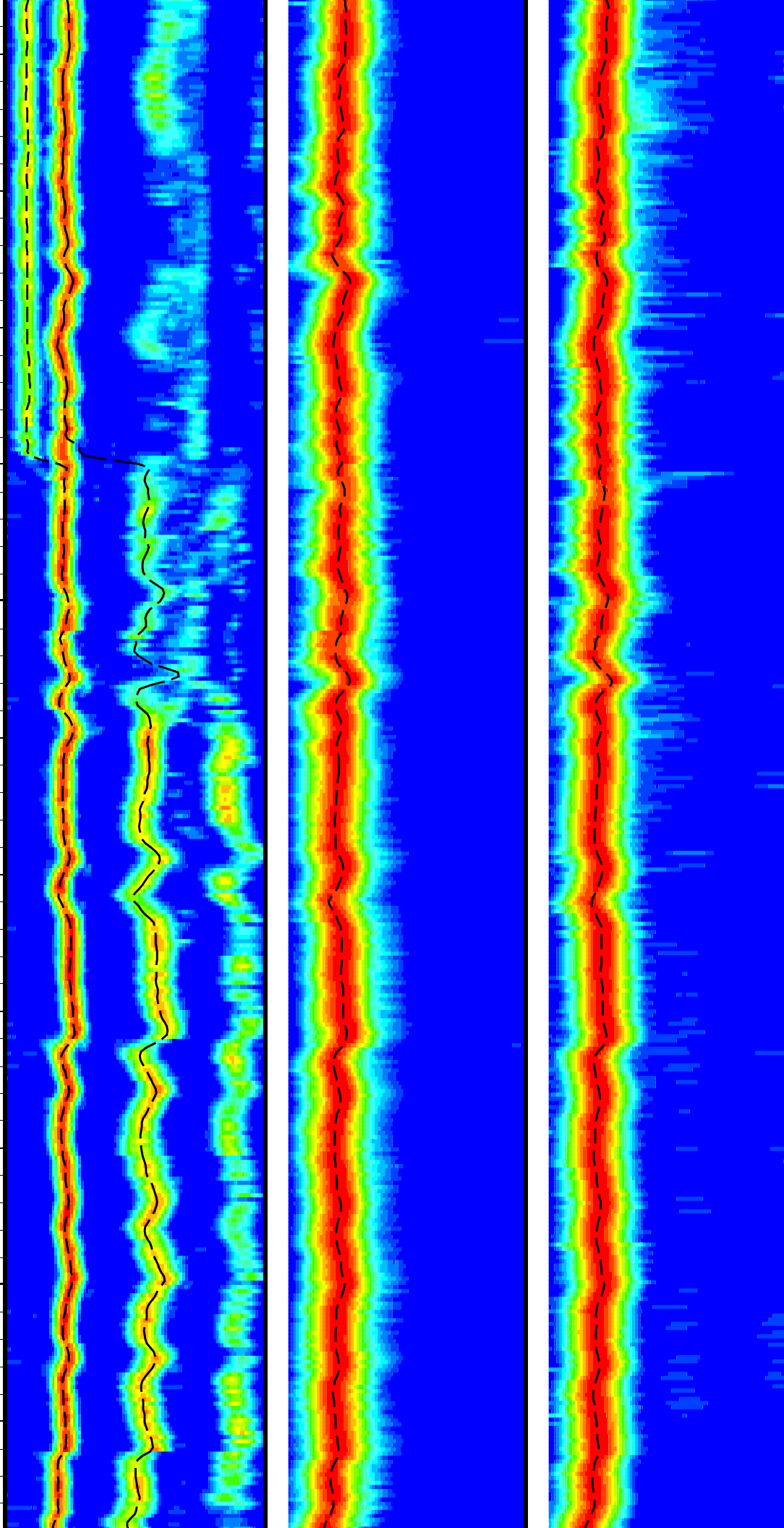
⊥ Integrated Transit Time Minor Pip Every 1 MS

⊣ Integrated Transit Time Major Pip Every 10 MS

■ Time Mark Every 60 S

	HNGS Spectroscopy Gamma Ray (HSGR)				
	0 (GAPI) 200				
	Caliper 2 (C2)				
	6 (IN) 16				
	Caliper 1 (C1)				
	6 (IN) 16	Min Amplitude Max			
		Rec.Array P&S Slow Proj. CVDL (SPR4) (US/F)			
		40 240			
	Undergauge	Waveform Data Copy Indicator 4 - Monopole P&S (WCI4)	Min Amplitude Max	Min Amplitude Max	
		0 (----) 10	Rec.Array L.Dipole Slow Proj. CVDL (SPR1) (US/F)	Rec.Array U.Dipole Slow Proj. CVDL (SPR2) (US/F)	
			40 440	40 440	
	Washout	Delta-T Comp / RA - P & S (DTRP) (US/F)	Waveform Data Copy Indicator 1 - Lower Dipole (WCI1)	Waveform Data Copy Indicator 2 - Upper Dipole (WCI2)	
		40 (----) 240	0 (----) 10	0 (----) 10	
Tension (TENS) (LBF)	Bit Size (BS)	Delta-T Shear / RA - P & S (DTRS) (US/F)	Delta-T Shear / RA - Lower Dipole (DT1R) (US/F)	Delta-T Shear / RA - Upper Dipole (DT2R) (US/F)	
7000	6 (IN) 16	40 240	40 440	40 440	
4000					





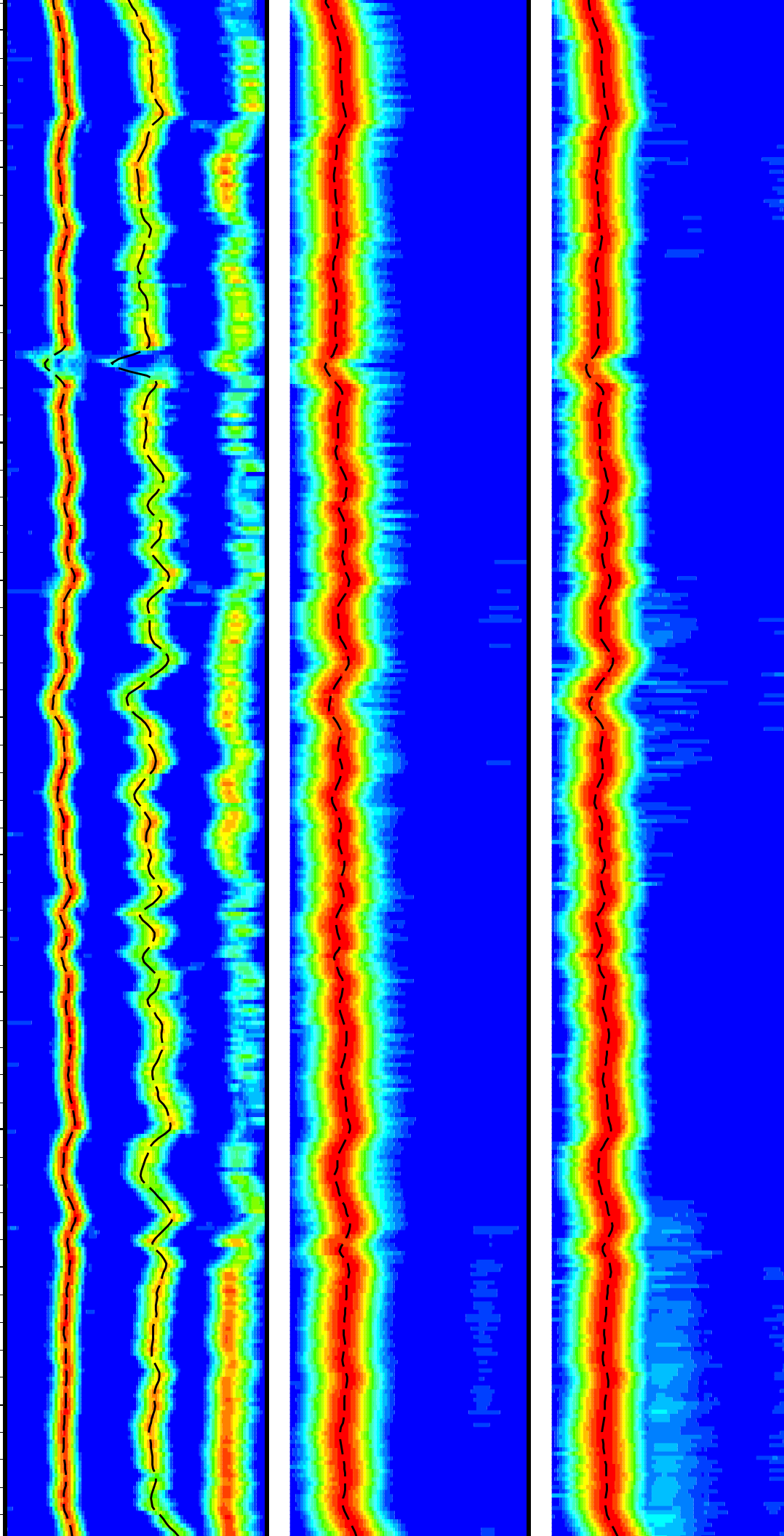
2425

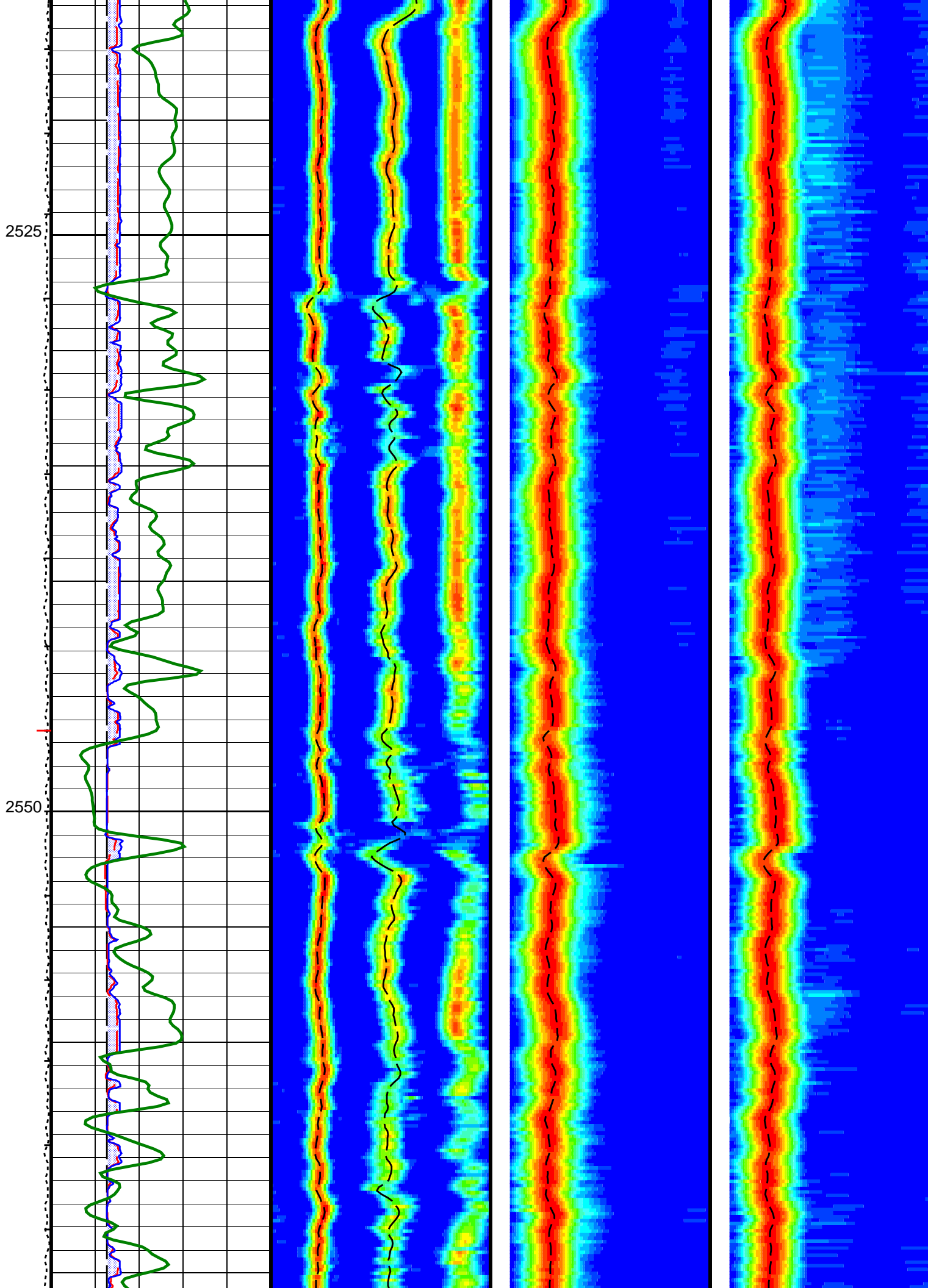
2450

FIELD PRINT

2475

2500





2575

TENS

HSGR

WCI4

DTRP

DTRS

WCI1

WCI2

2600

C1

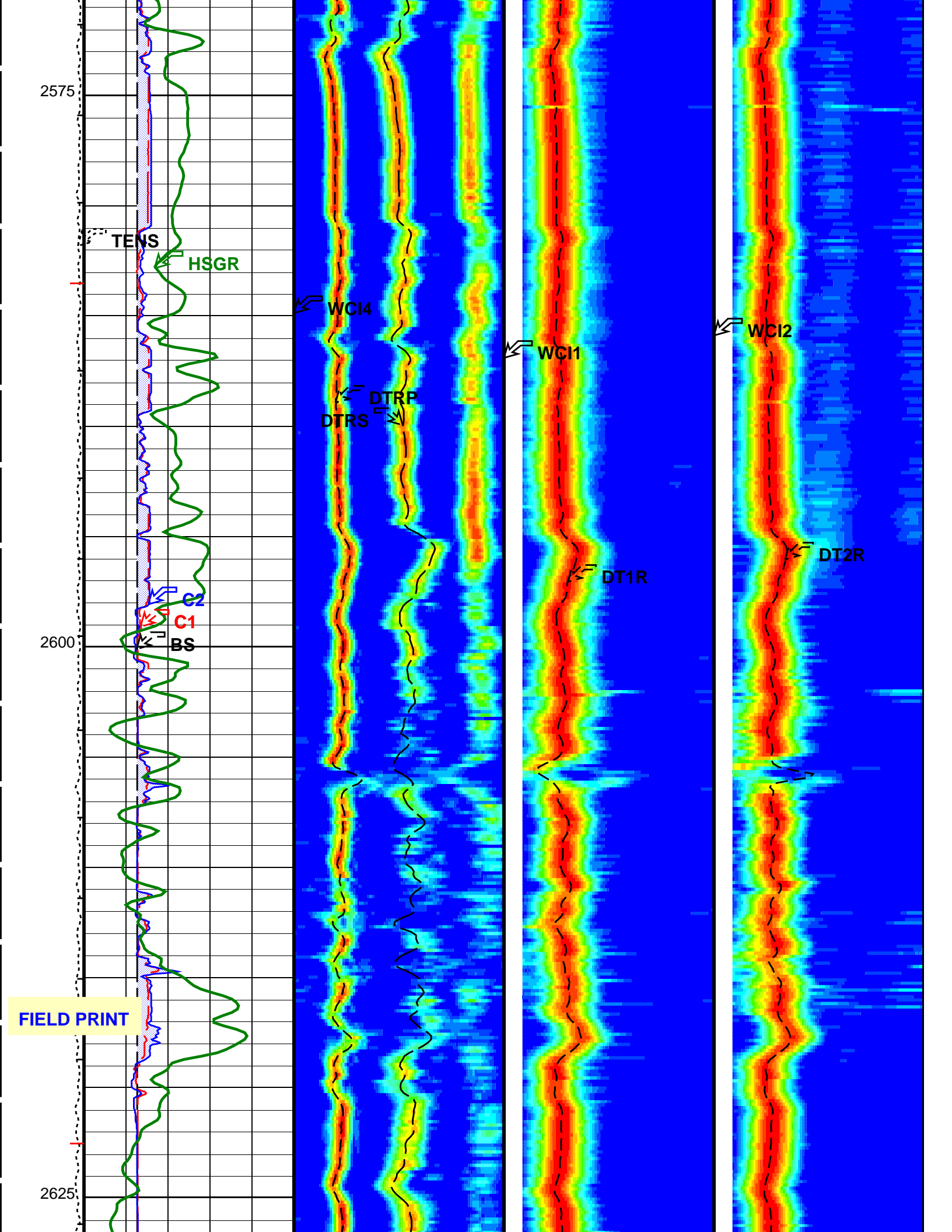
BS

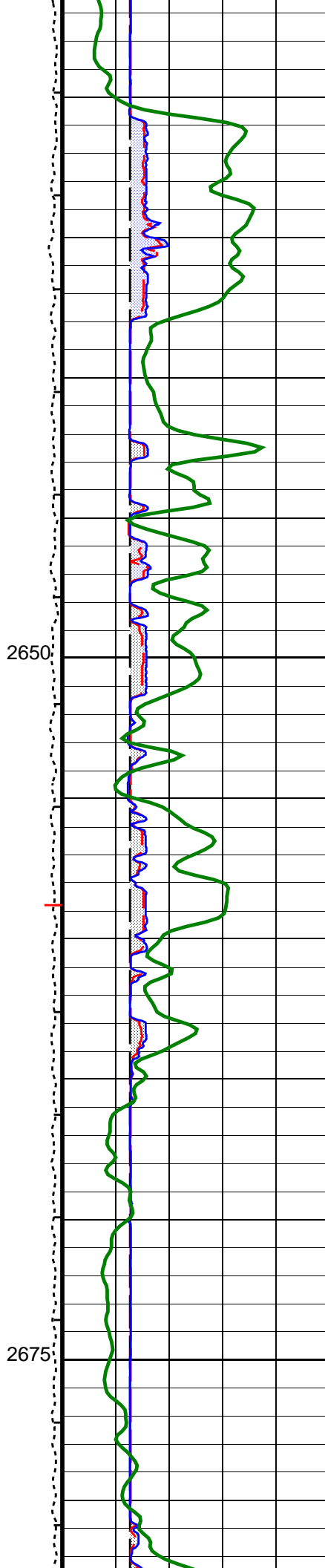
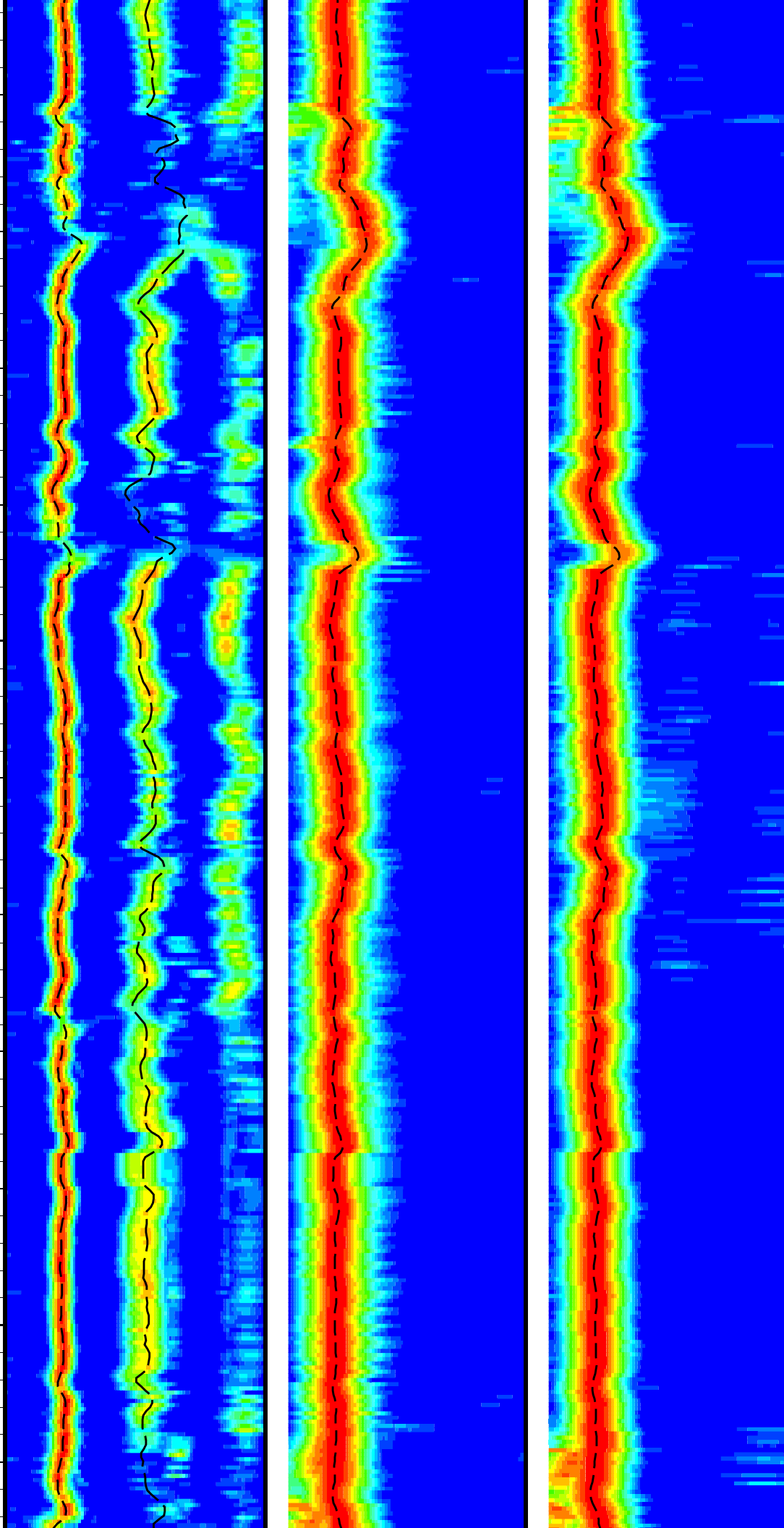
DT1R

DT2R

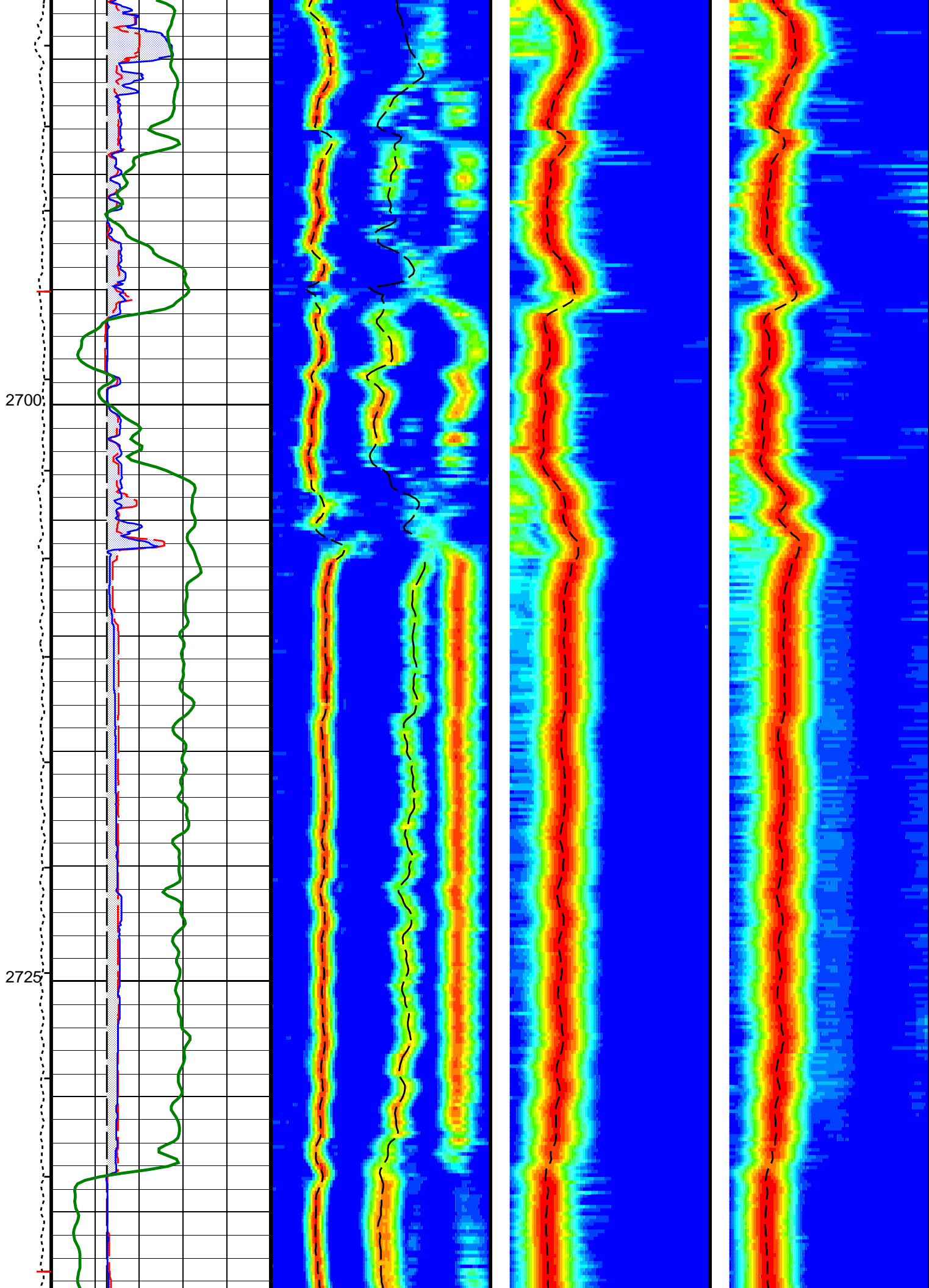
FIELD PRINT

2625

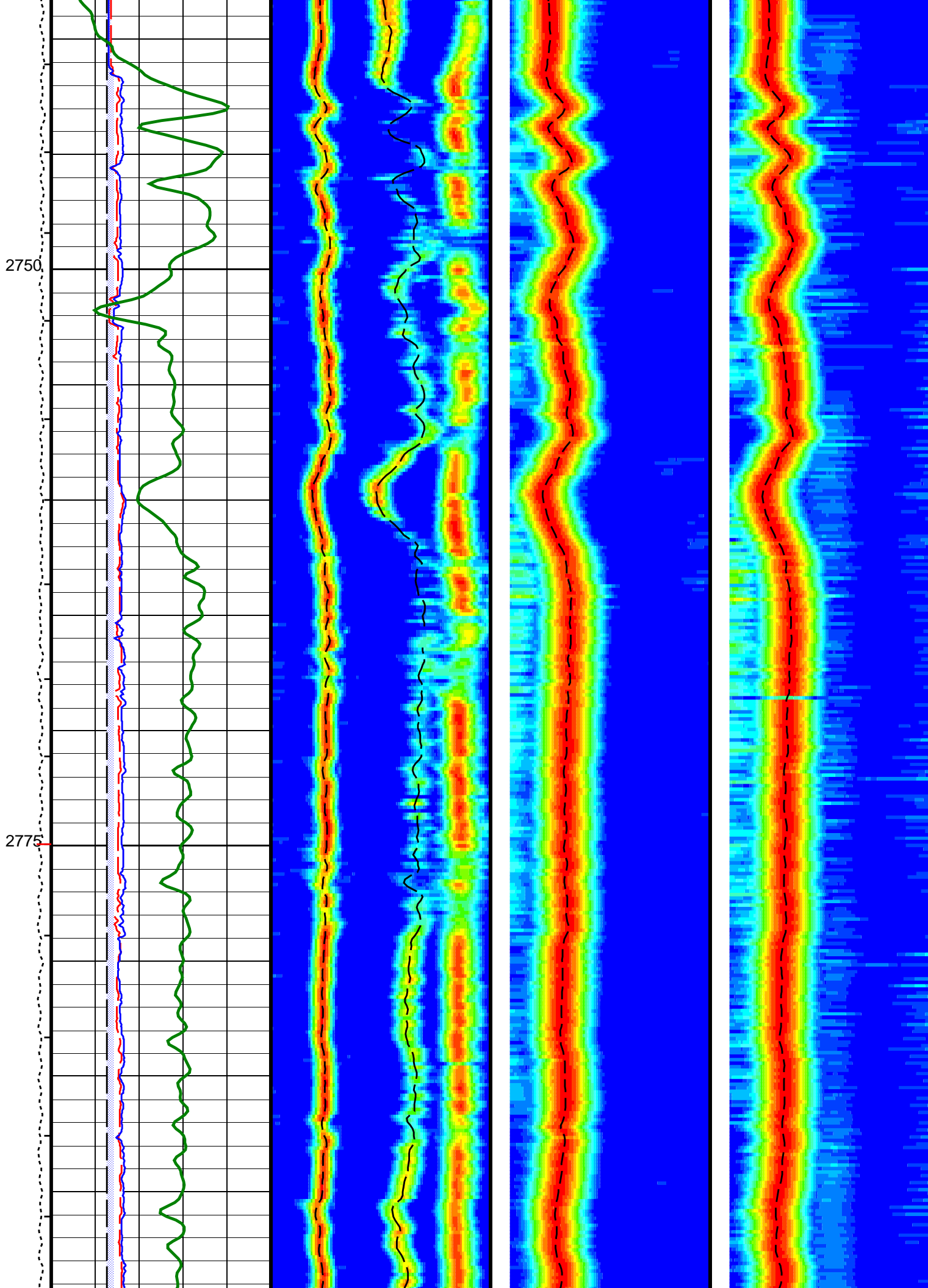


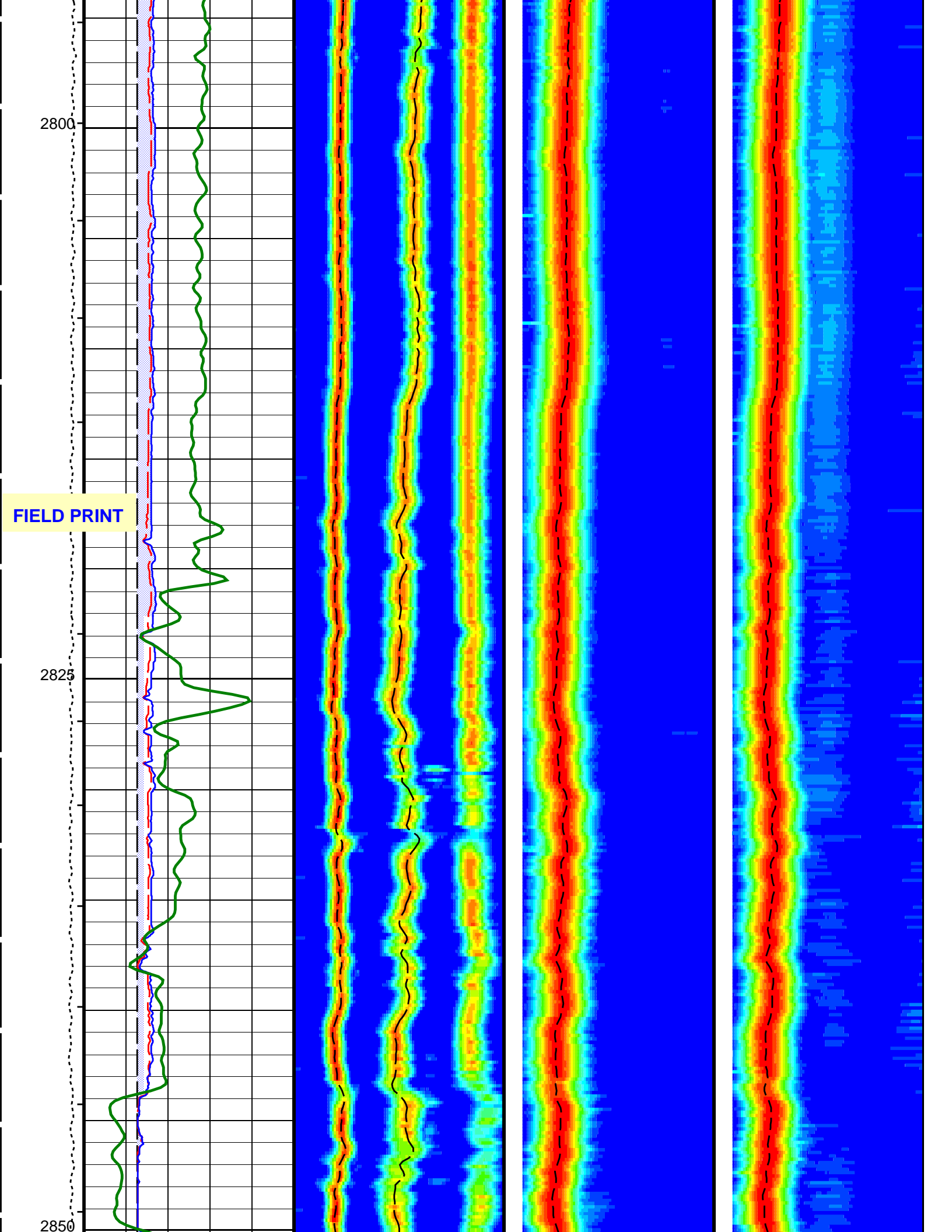


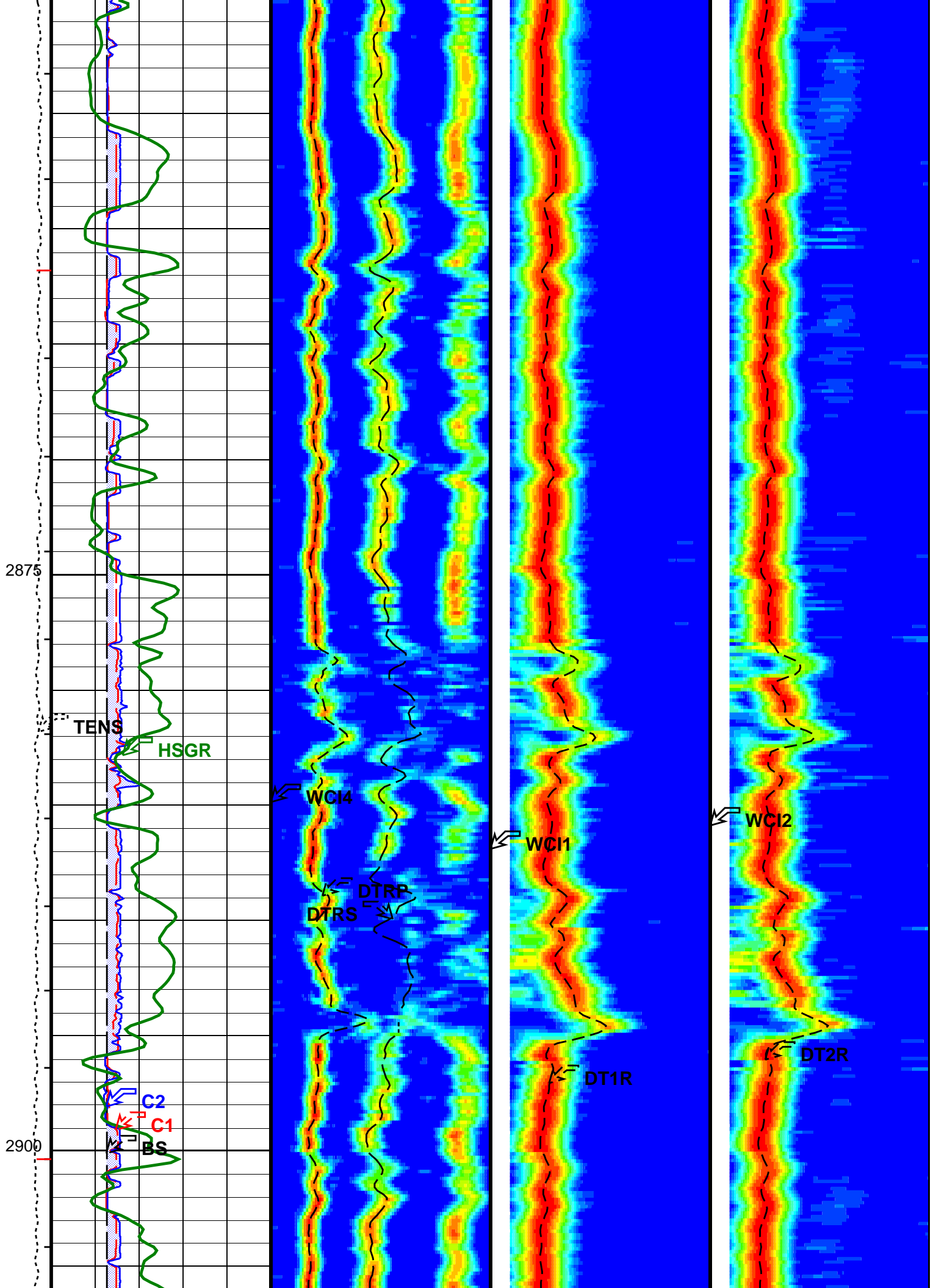


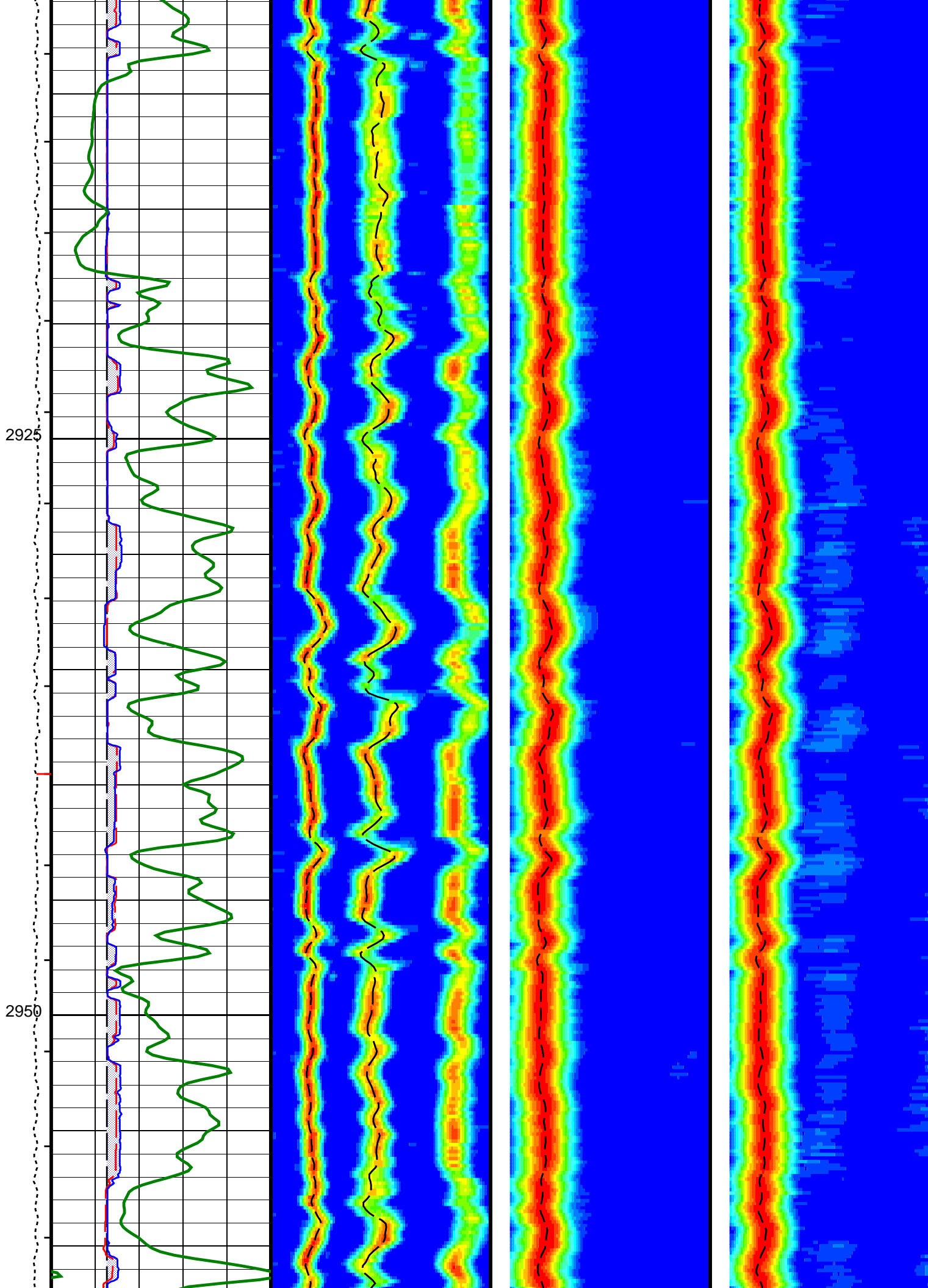


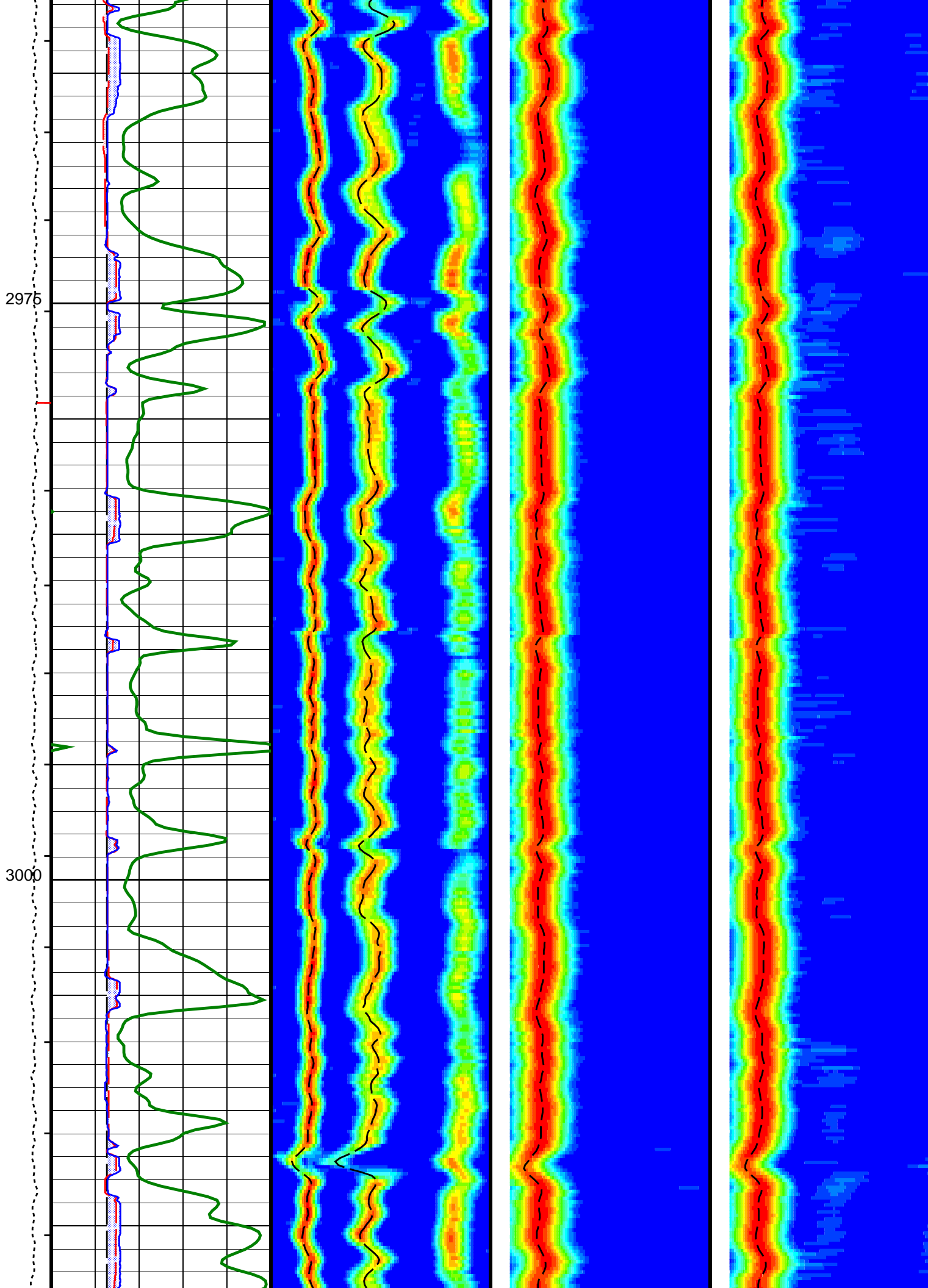




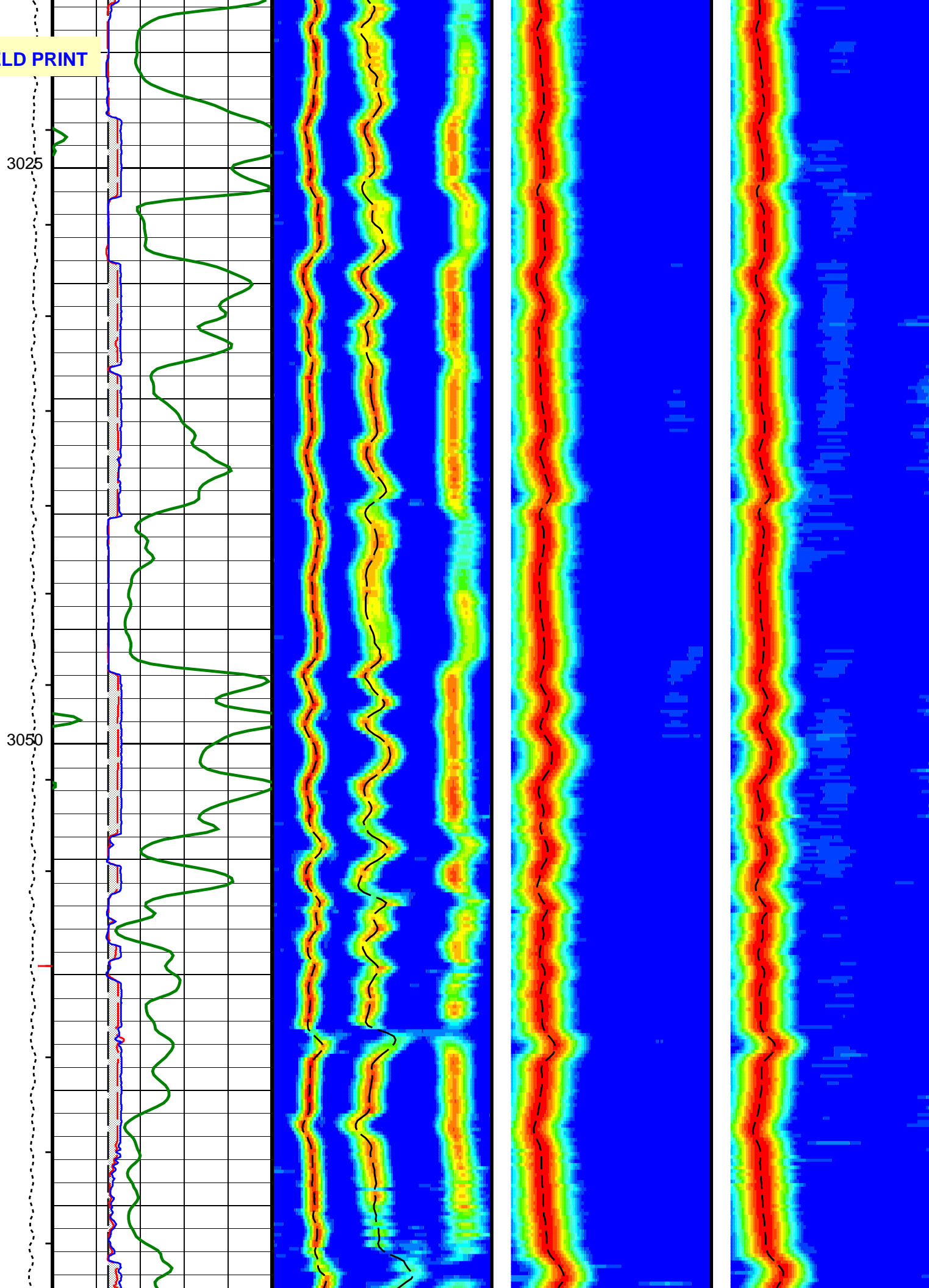




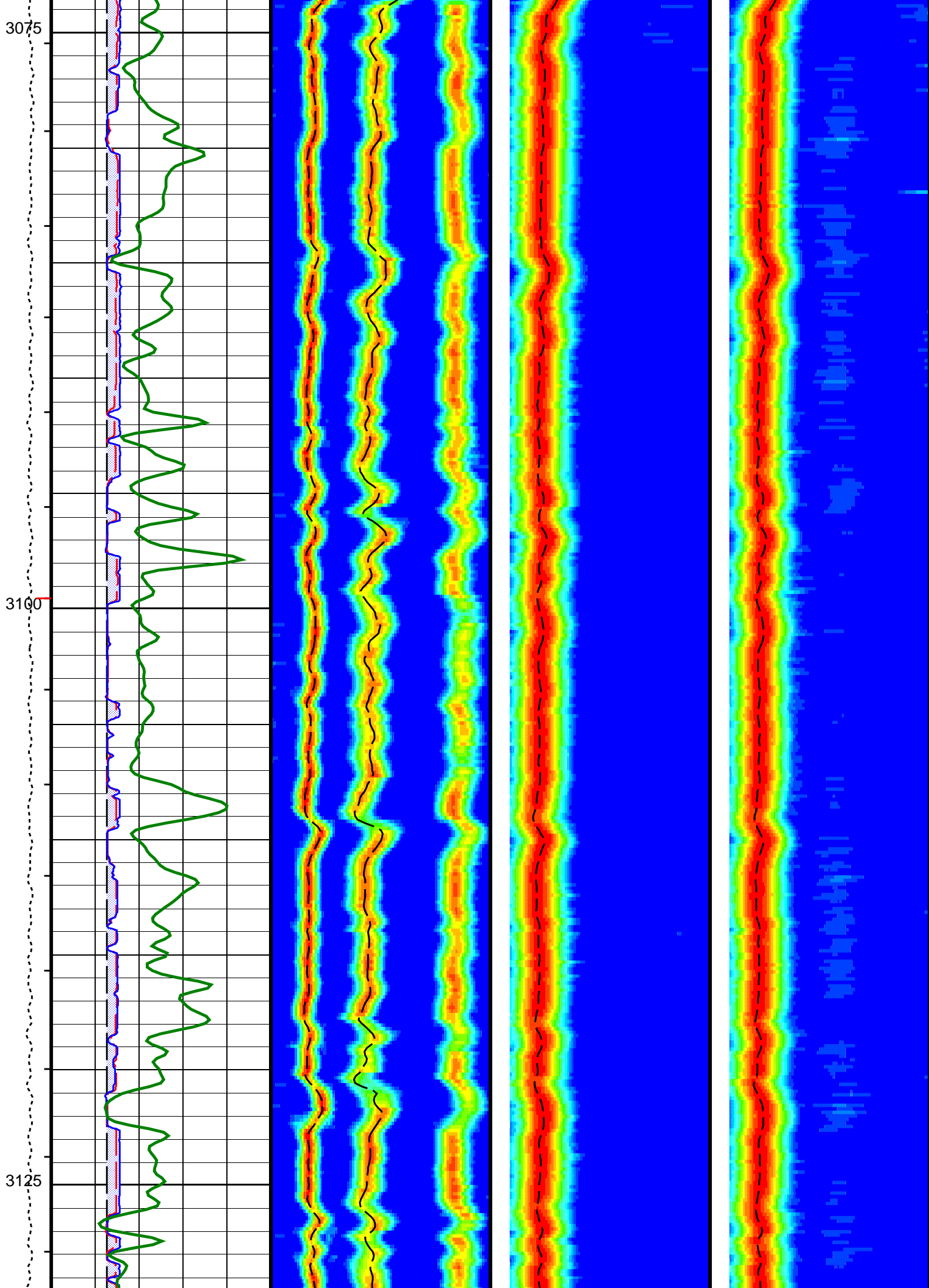


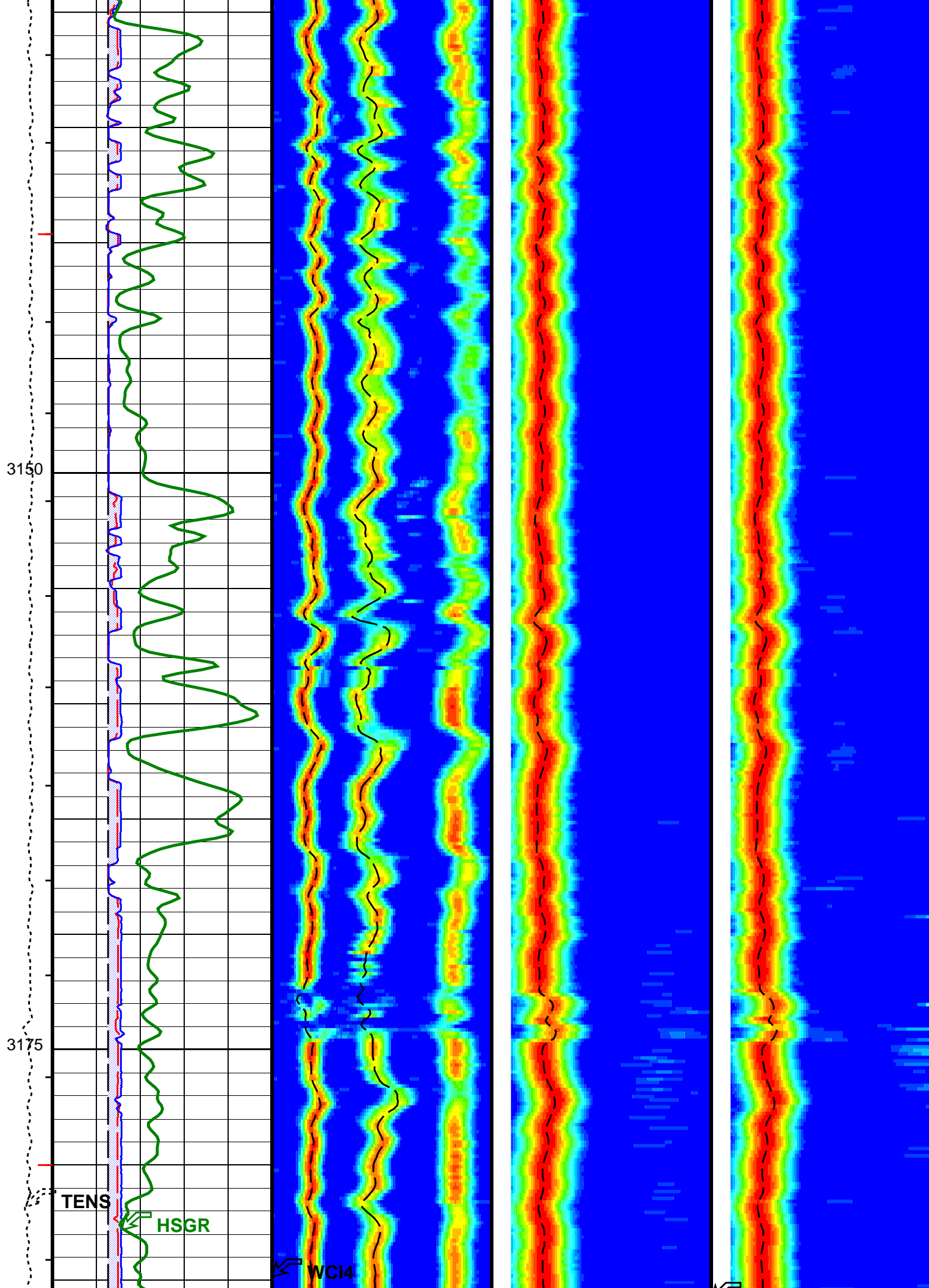


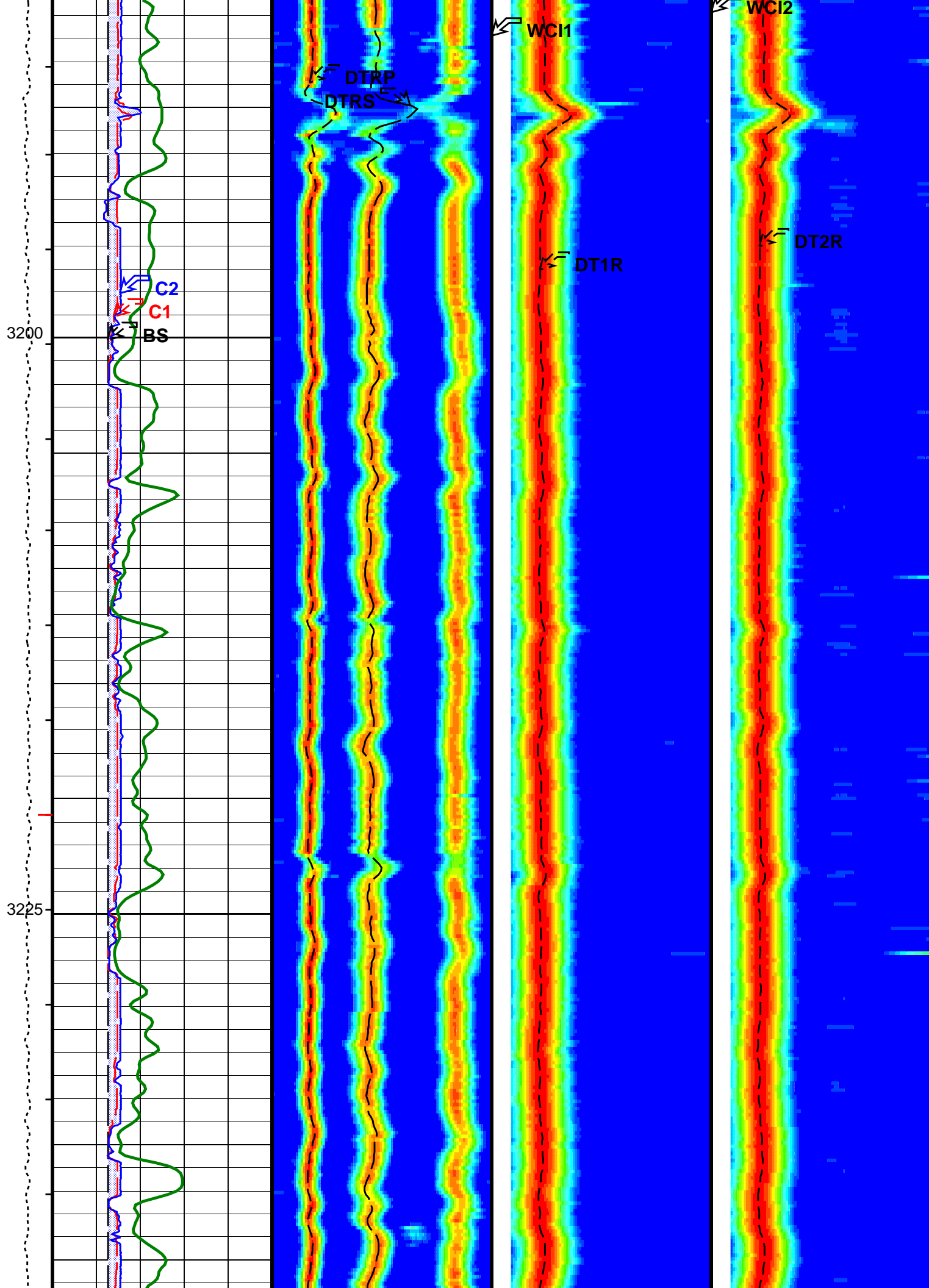
FIELD PRINT

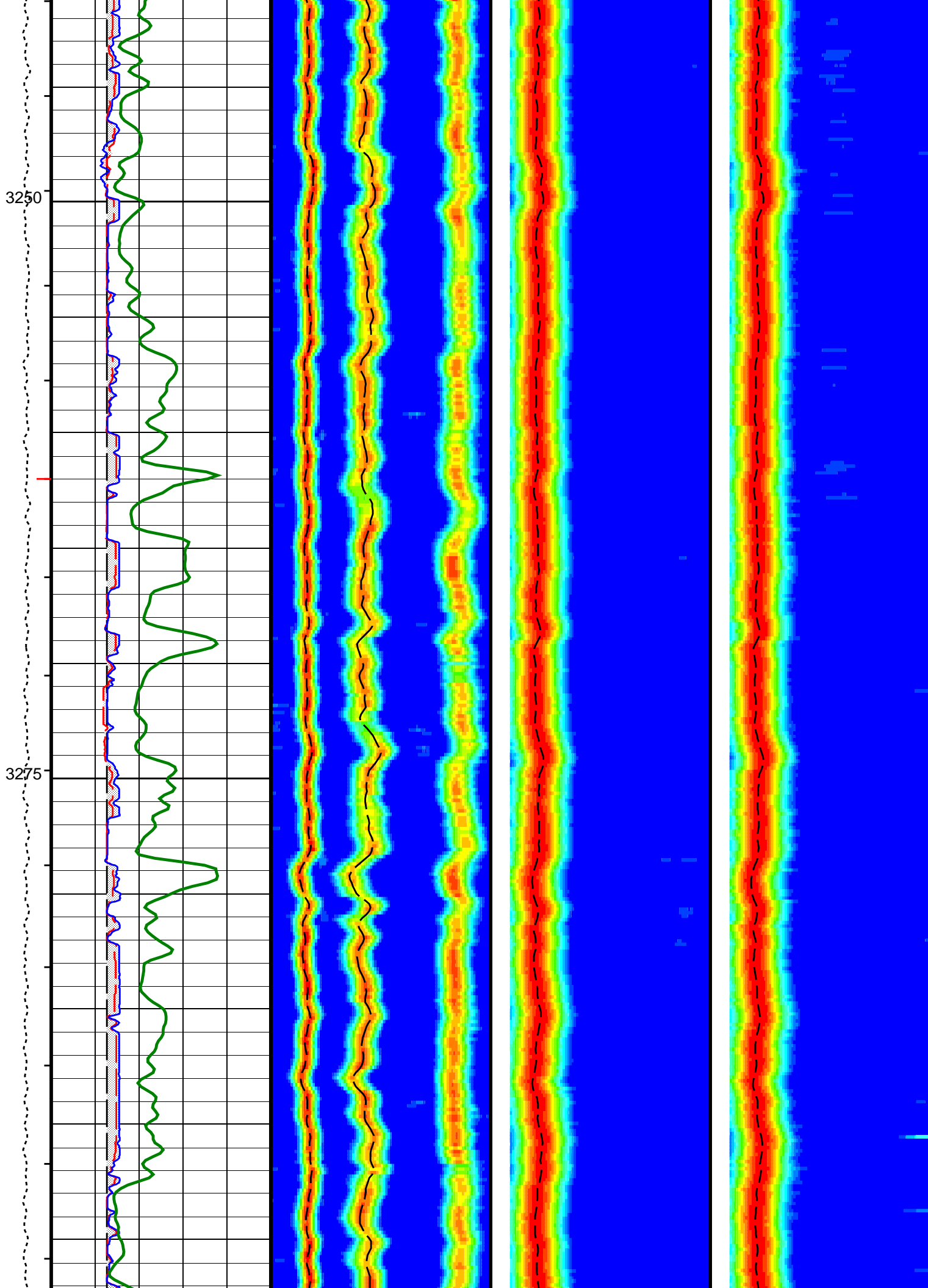


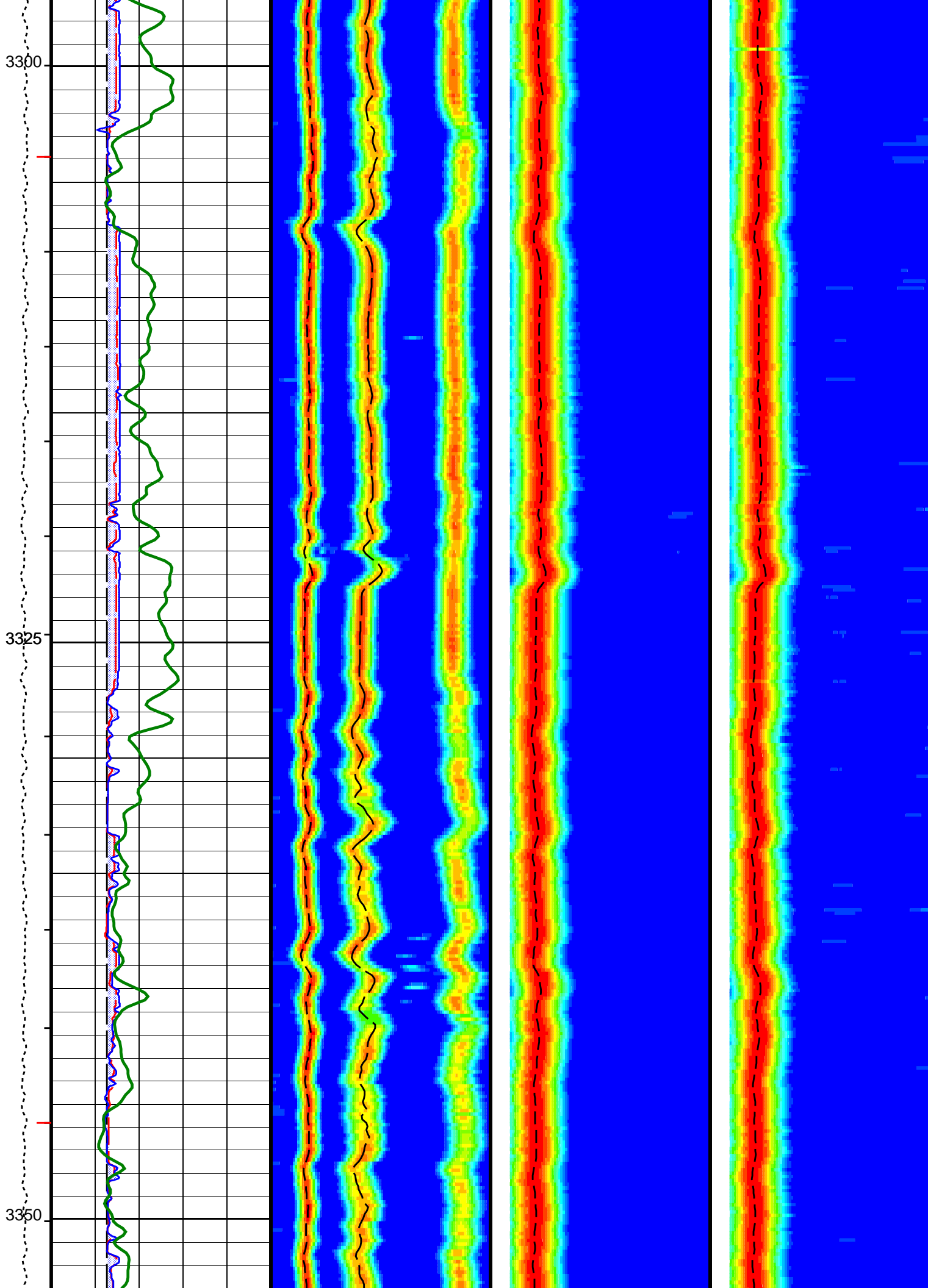


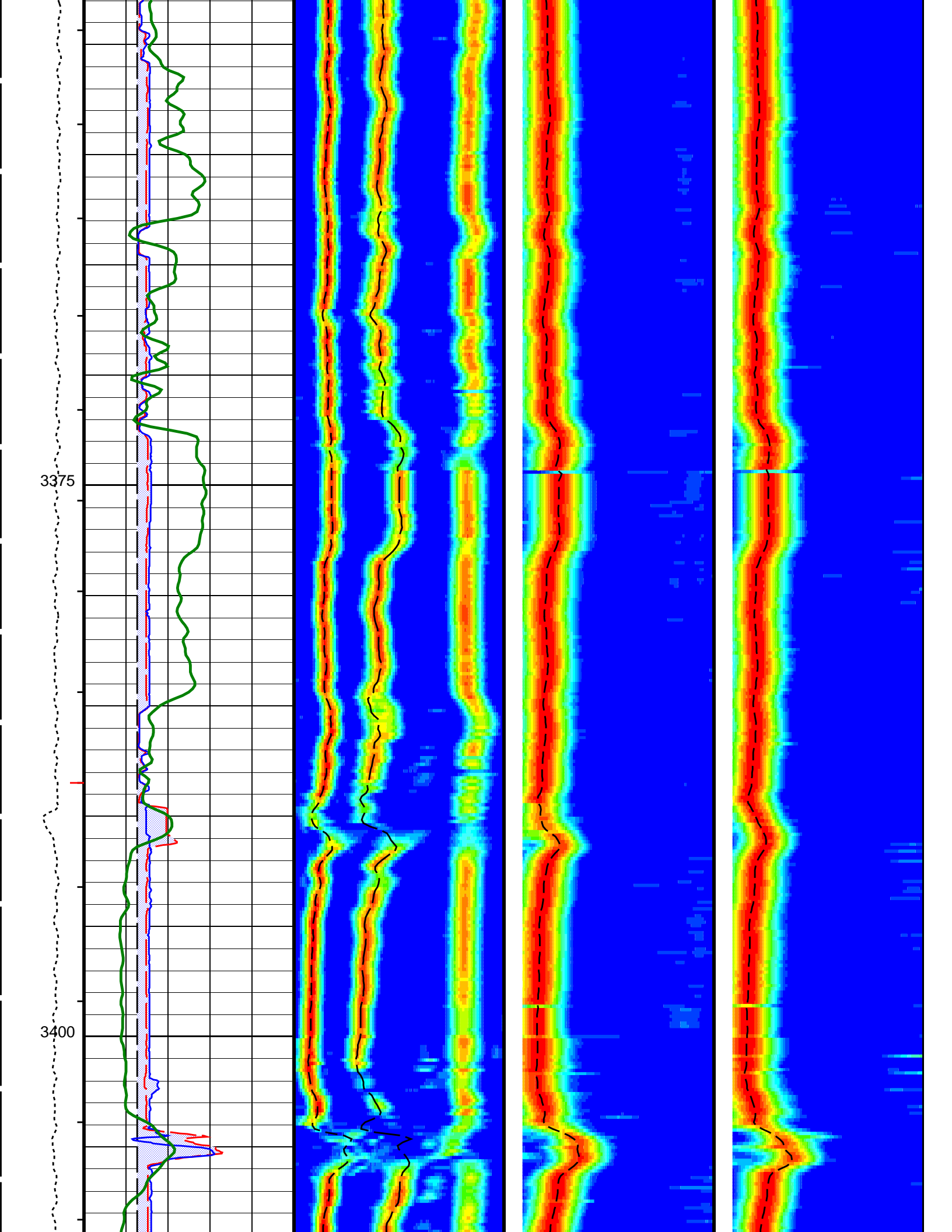




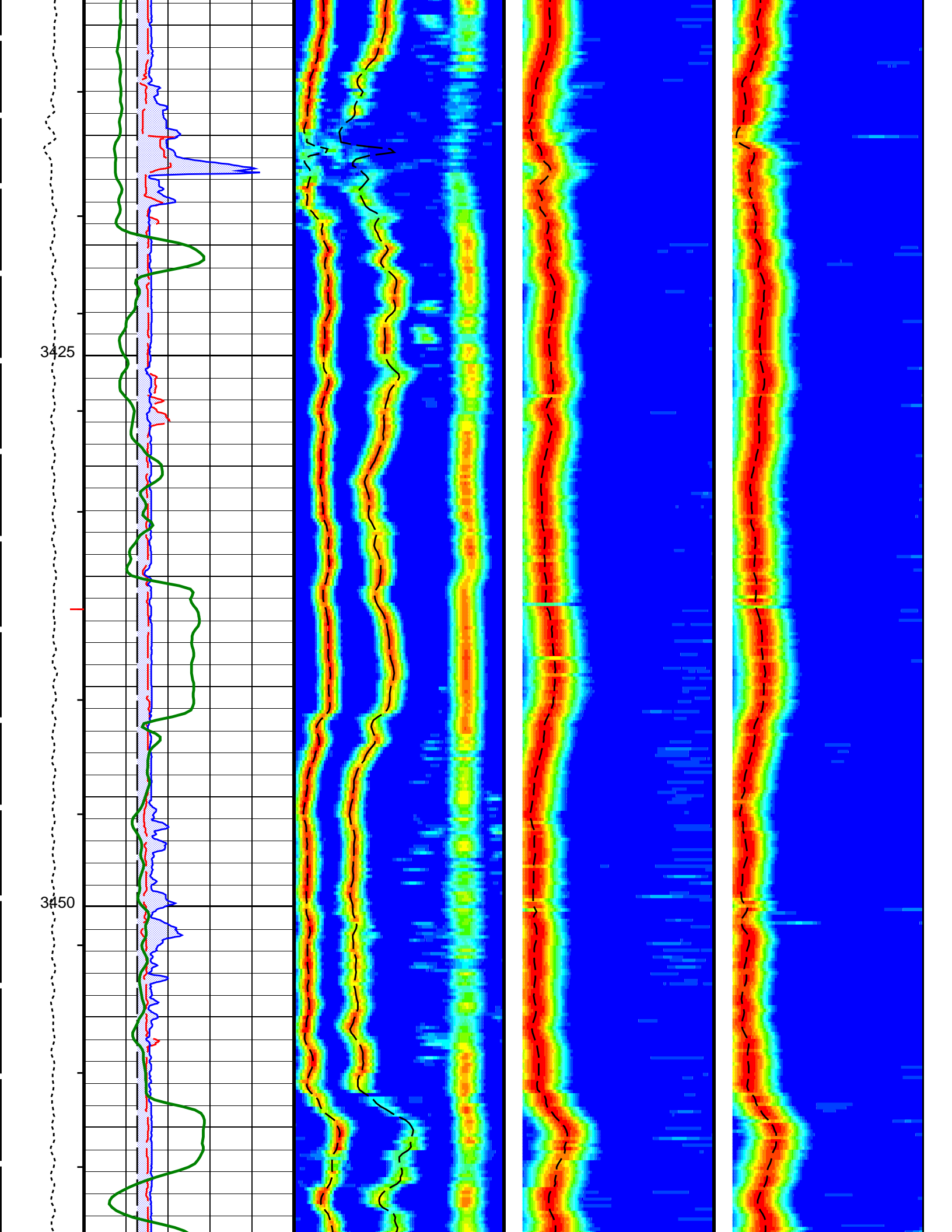


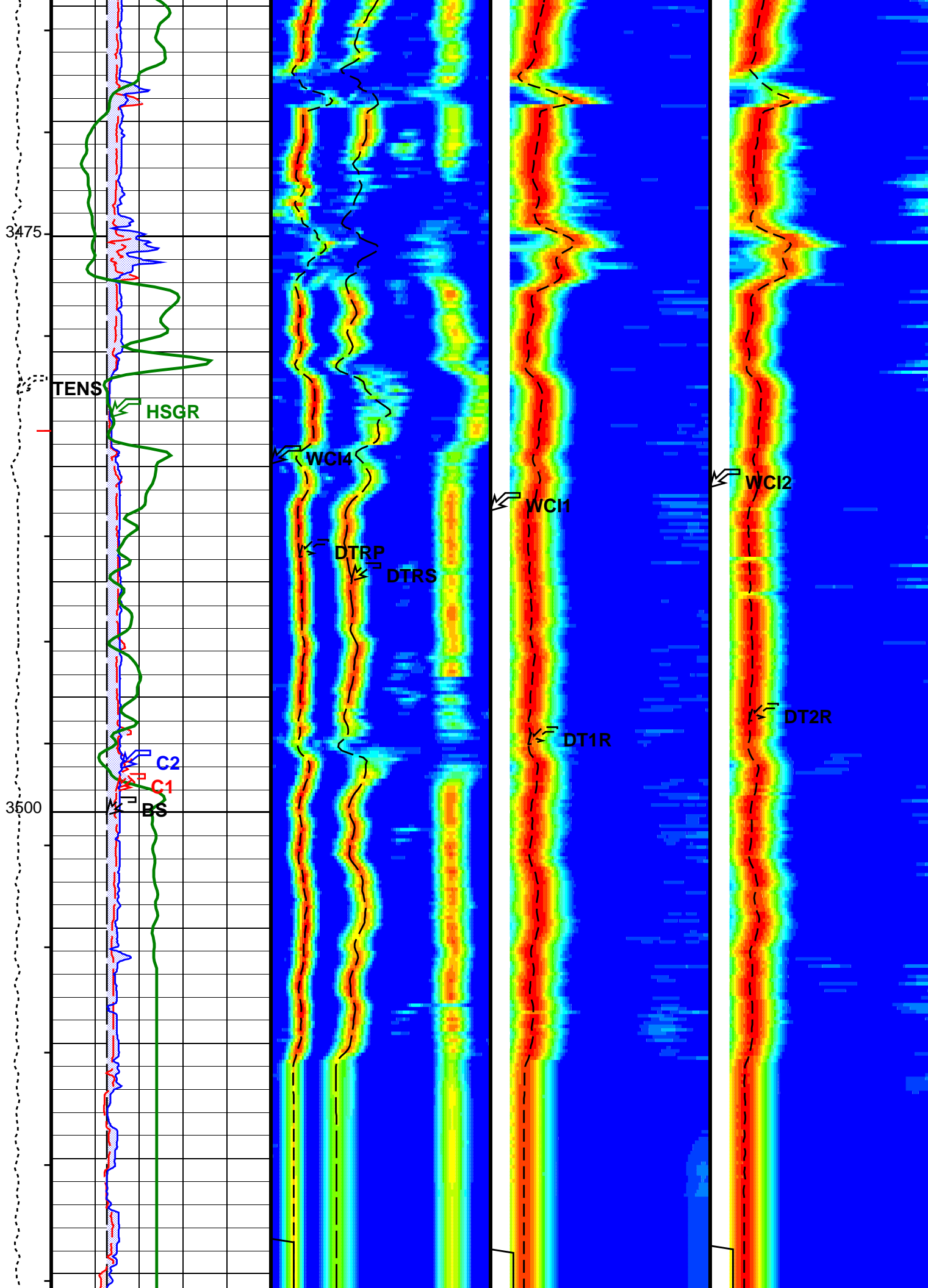


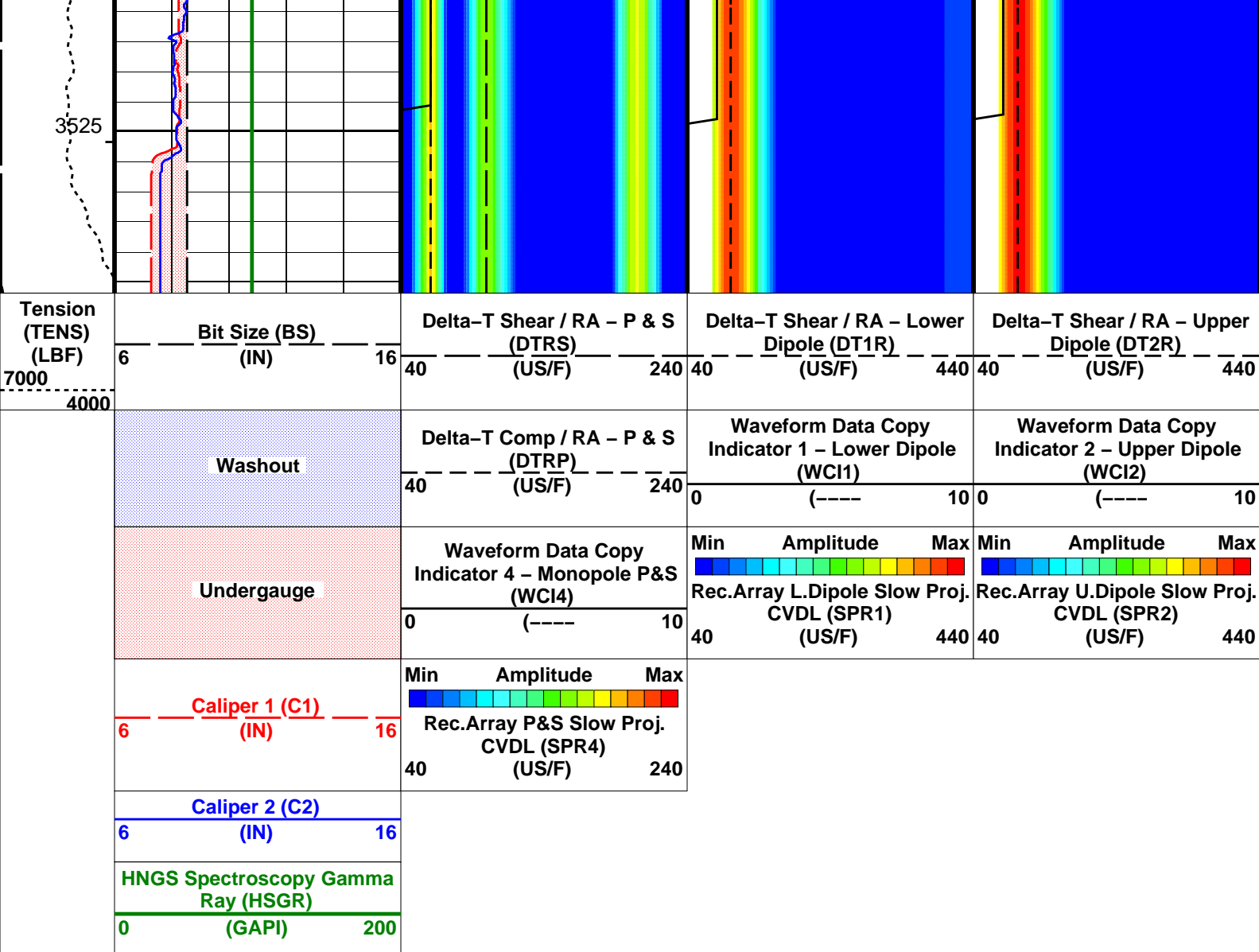












#### PIP SUMMARY

- └ Integrated Transit Time Minor Pip Every 1 MS
- └ Integrated Transit Time Major Pip Every 10 MS
- Time Mark Every 60 S

Format: DSI\_BCR\_IMAGE\_200 Vertical Scale: 1:200 Graphics File Created: 02-Dec-2004 07:48

### OP System Version: 12C0-301

MCM

FBST-B	12C0-301	DSST-B	12C0-301
HNGC-A	SPC-2602-NUCL	HNGS-BA	SPC-2602-NUCL
DTA-A	12C0-301	DTC-H	12C0-301
DTPC-A	12C0-301		

### Input DLIS Files

02-Dec-2004 06:55

### Output DLIS Files

DEFAULT FMI\_DSI\_NGS\_075PUP FN:72 PRODUCER 02-Dec-2004 07:48