

Input DLIS Files

02-Dec-2004 06:55

Output DLIS Files

DEFAULT

FMI_DSI_NGS_075PUP

FN:72

PRODUCER

02-Dec-2004 07:48

3530.3 M

2386.7 M

Integrated Hole/Cement Volume Summary

Hole Volume = 44.51 M3

Cement Volume = 19.85 M3 (assuming 6.63 IN casing O.D.)

Computed from 3528.7 M to 2420.1 M using data channel(s) C1 C2

FIELD PRINT

OP System Version: 12C0-301

MCM

FBST-B

HNGC-A

DTA-A

DTPC-A

12C0-301

SPC-2602-NUCL

12C0-301

12C0-301

DSST-B

HNGS-BA

DTC-H

12C0-301

SPC-2602-NUCL

12C0-301

PIP SUMMARY

└ Integrated Hole Volume Minor Pip Every 0.1 M3

└ Integrated Hole Volume Major Pip Every 1 M3

└ Integrated Cement Volume Minor Pip Every 0.1 M3

└ Integrated Cement Volume Major Pip Every 1 M3

■ Time Mark Every 60 S

HNGS Spectroscopy Gamma Ray (HSGR)

0 (GAPI) 200

FMI Correlation Resistance (LOG) (FBCR)

2 (KOHM) 2000

Pad One Azimuth (P1AZ_FBST)

-40 (DEG) 360

Hole Azimuth (HAZIM)

-40 (DEG) 360

Deviation (DEVIM)

0 (DEG) 10

Caliper 2 (C2)

6 (IN) 16

Caliper 1 (C1)

6 (IN) 16

Undergauge

Washout

92.0633

103.8480

115.2570

152.1330

184.7410

210.1210

232.1580

252.4640

272.8400

290.6150

307.9280

324.8500

344.7100

368.9250

409.1260

494.7130

FBST/PADA (FBAA_P)

(----

Tension (TENS) (LBF)

6

Bit Size (BS)

(IN)

16

Tool Rotation (RB_FBST)

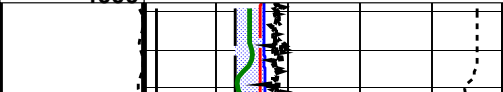
(DEG)

-180

180

7000

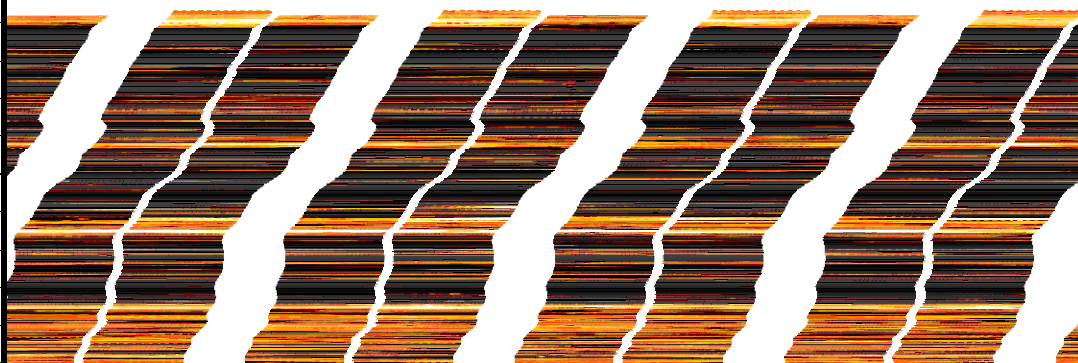
4000

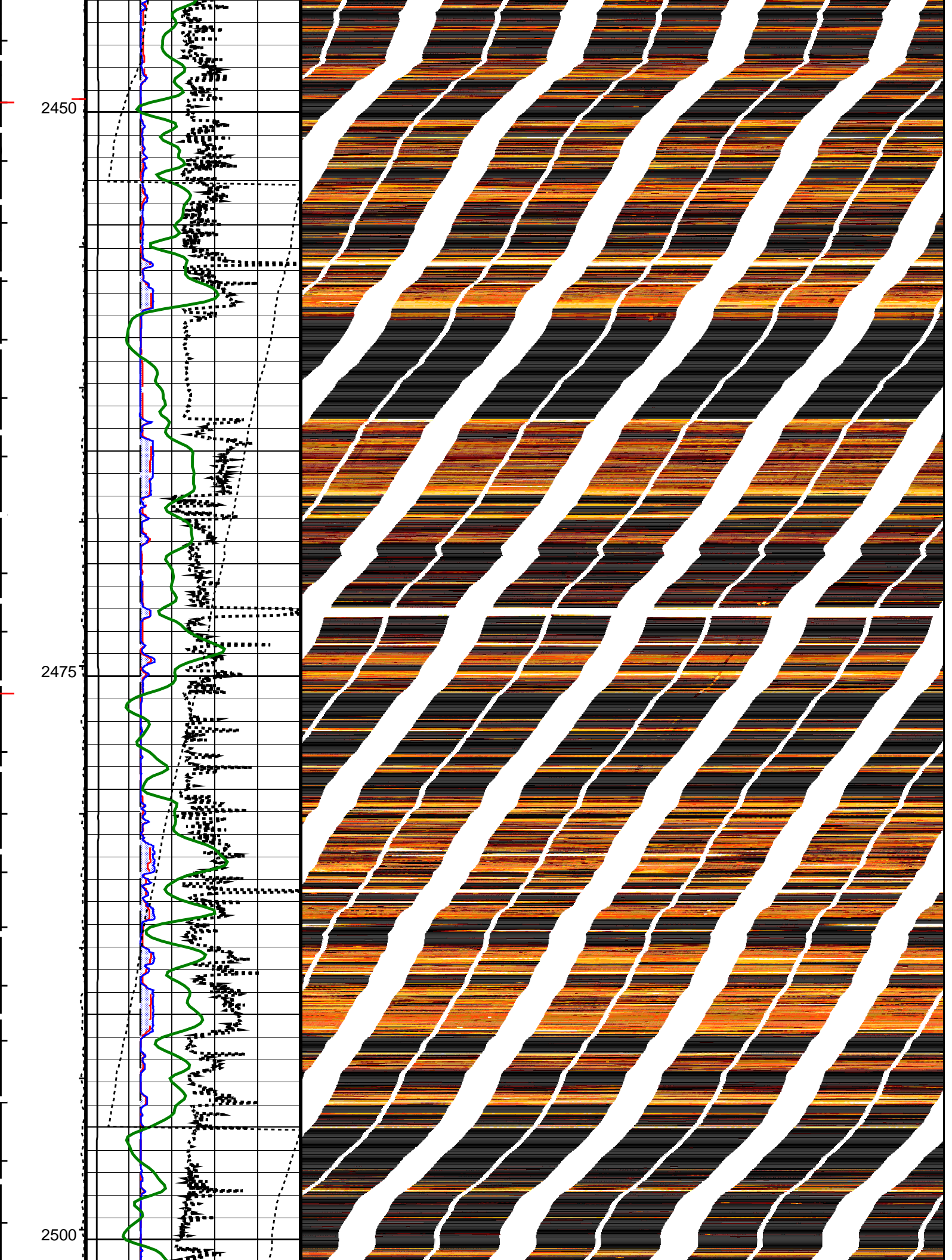


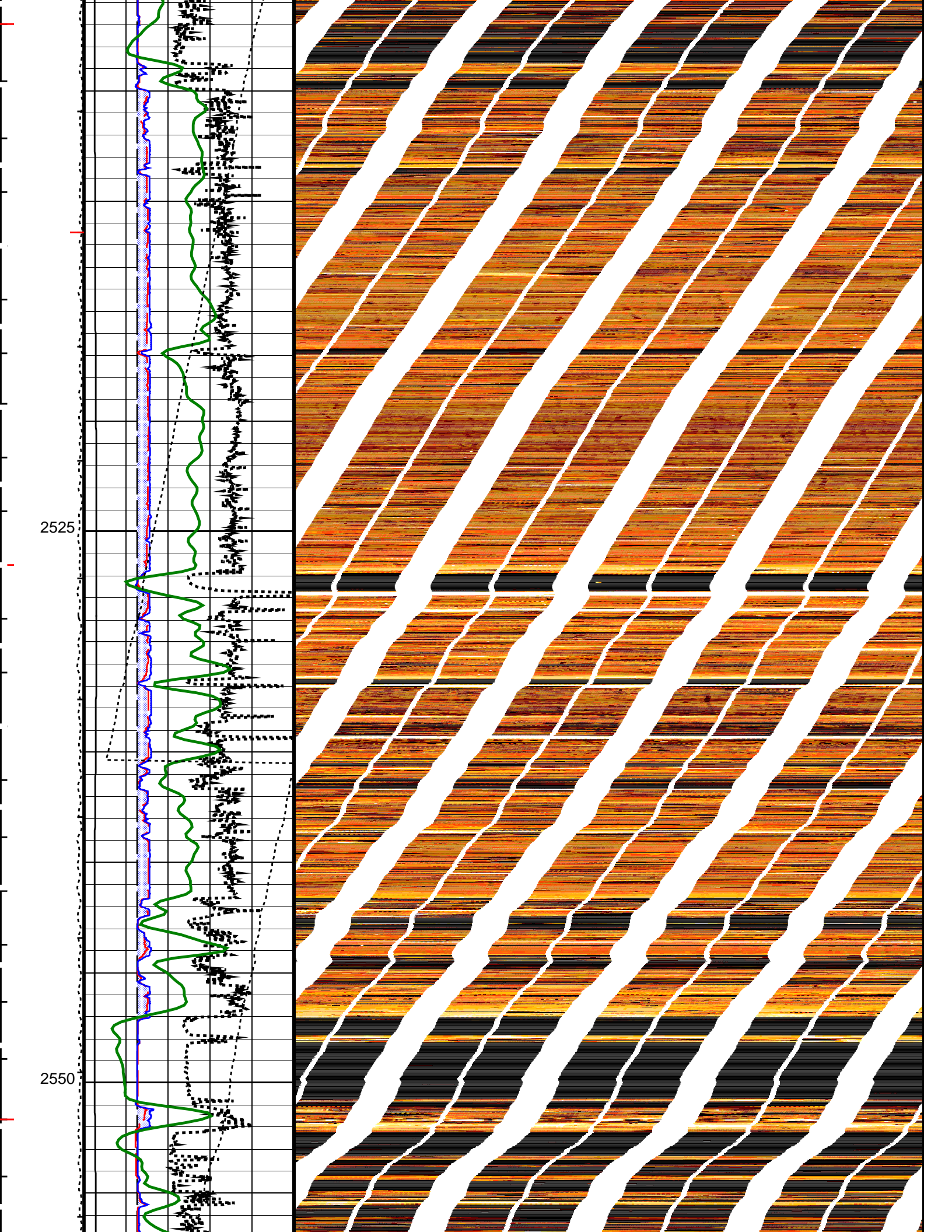
2400

2425

FIELD PRINT







2575

TENS

P1A2 FBST

RB FBST

2600

USGR

HAZIM

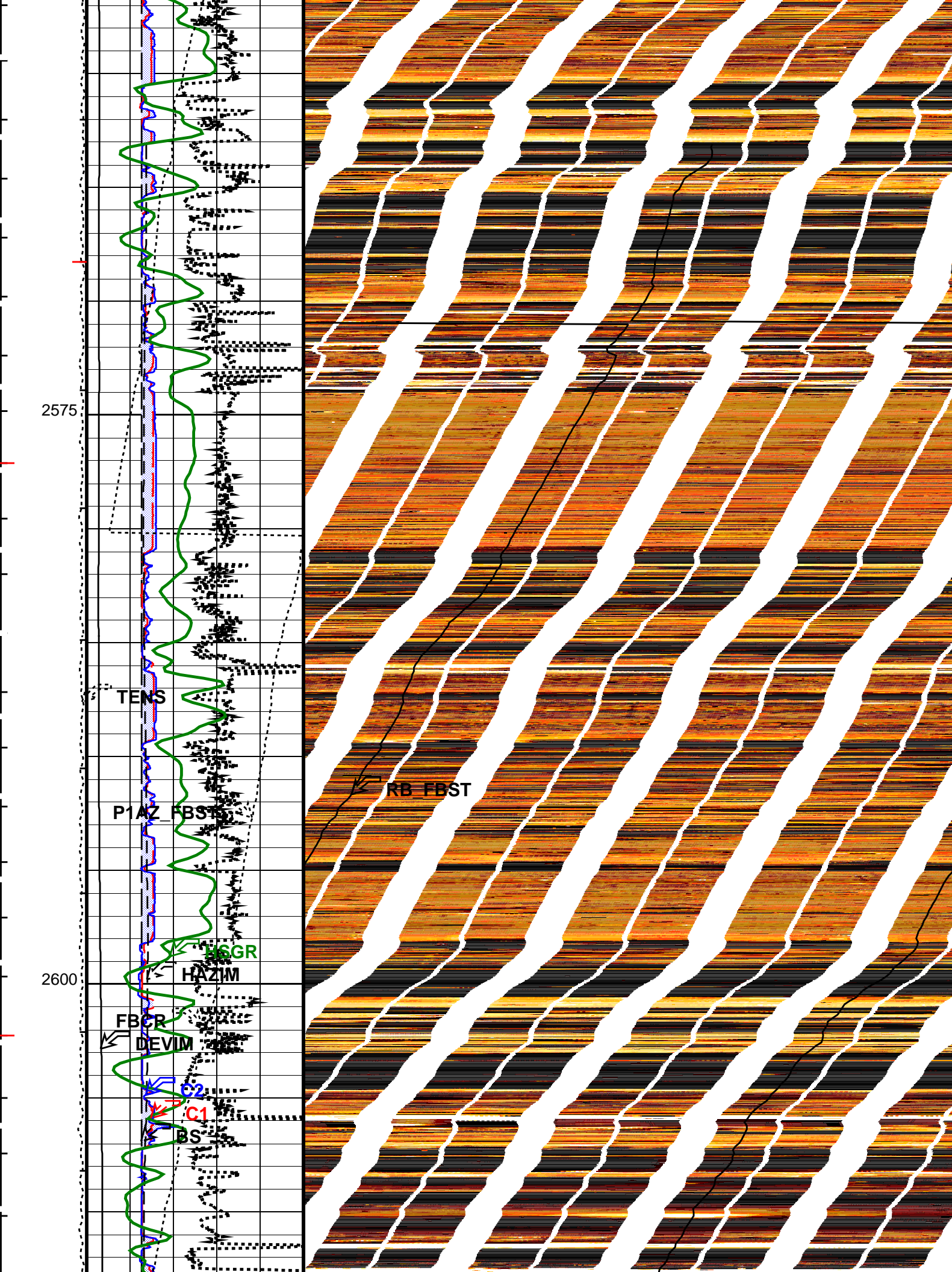
FBCP

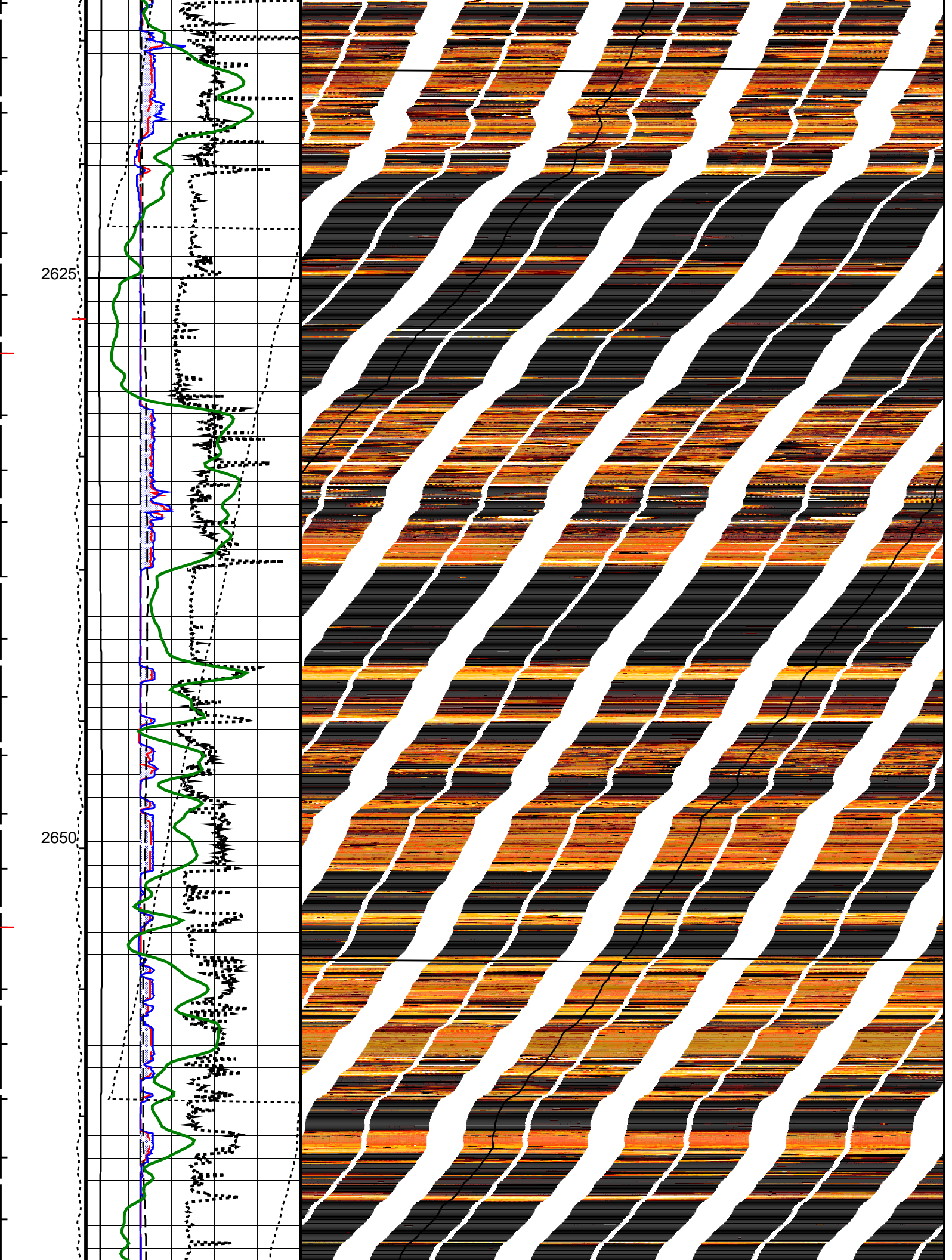
DEVIM

C2

C1

BS

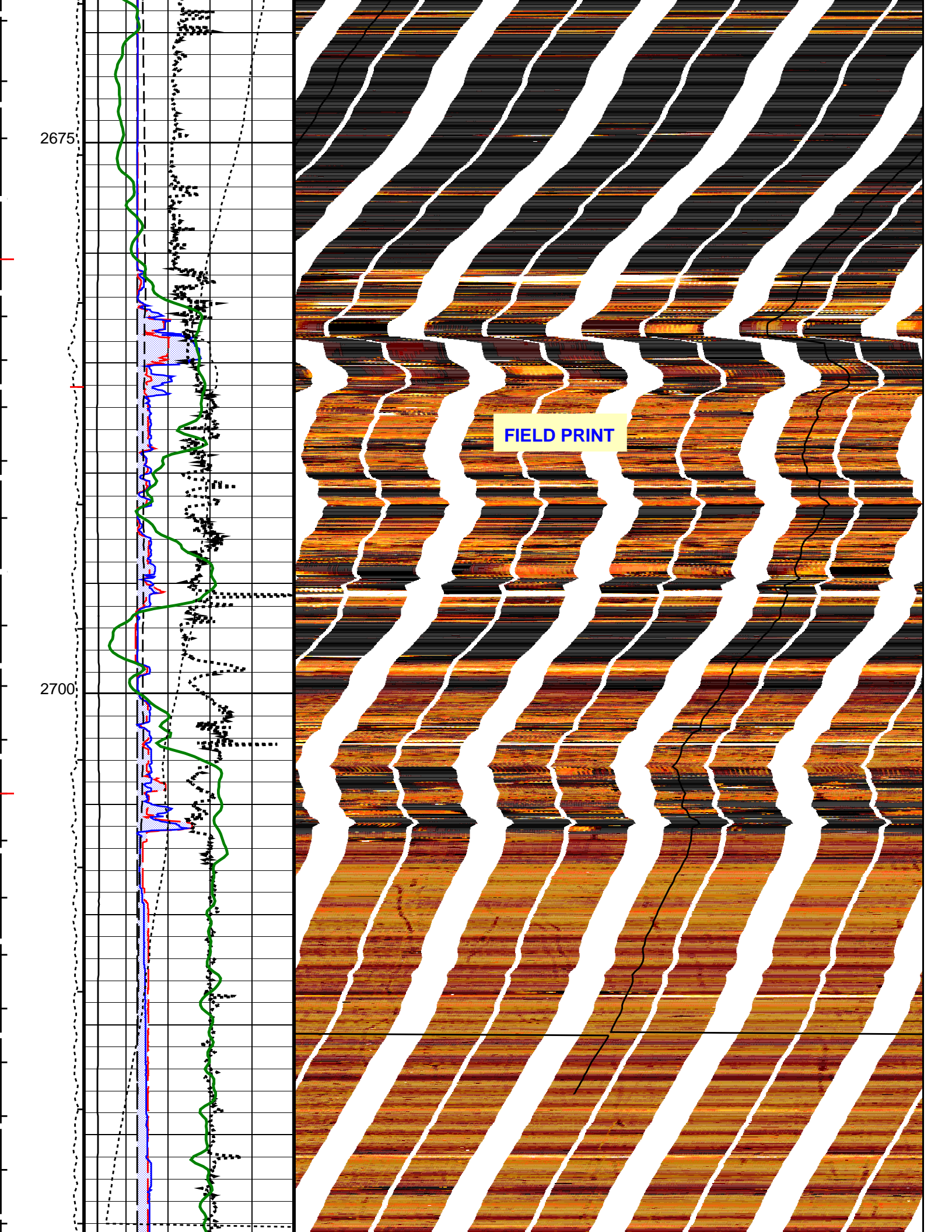


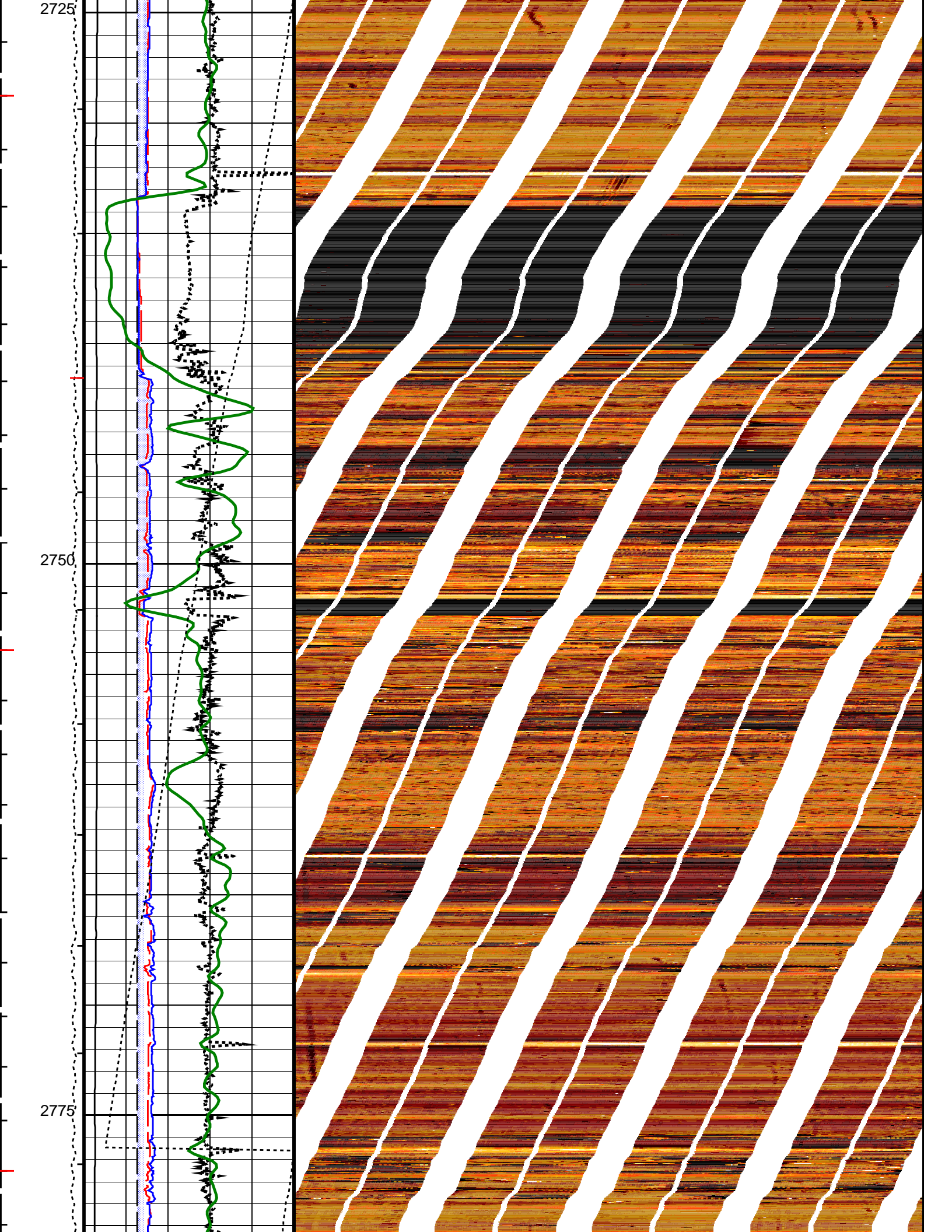


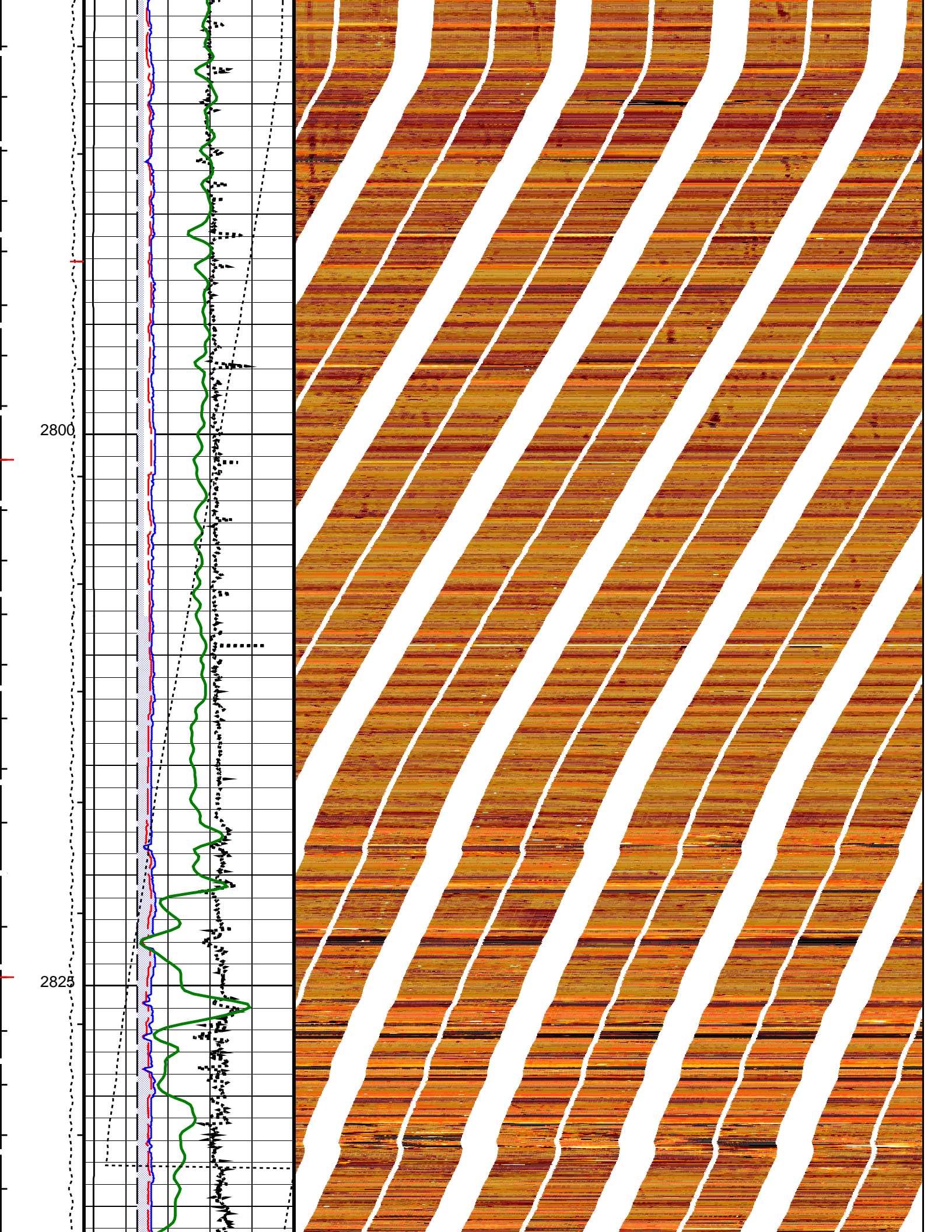
2675

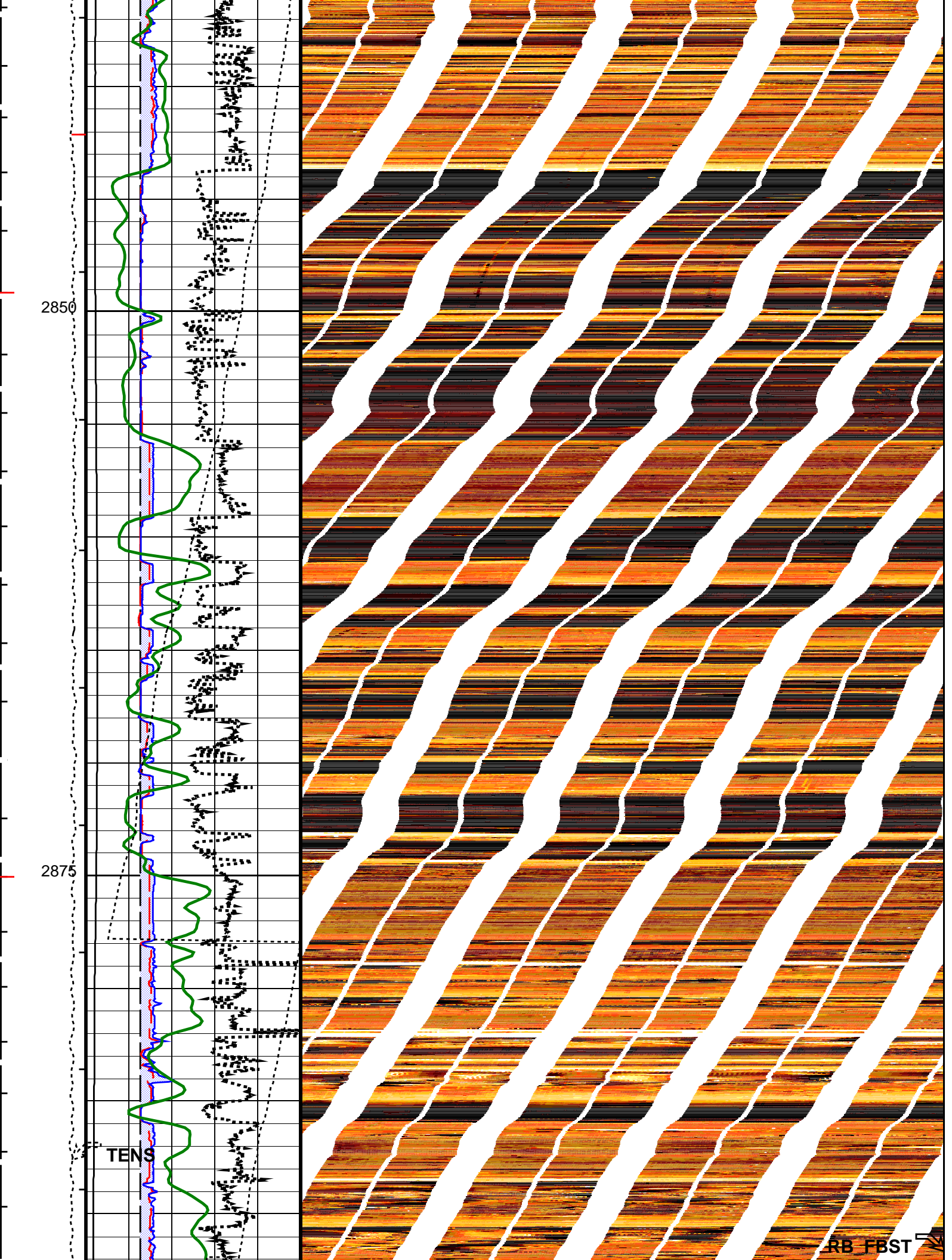
2700

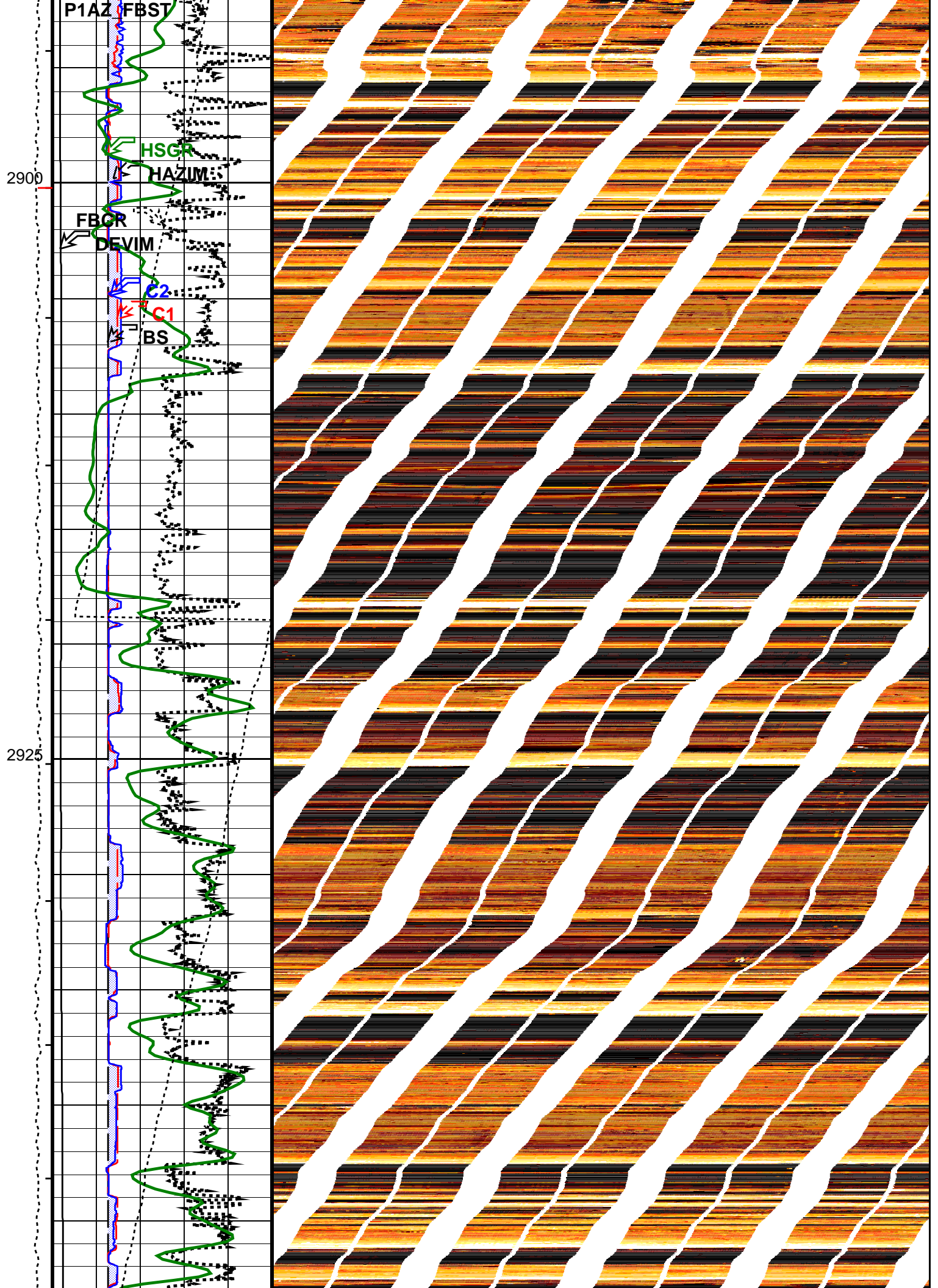
FIELD PRINT

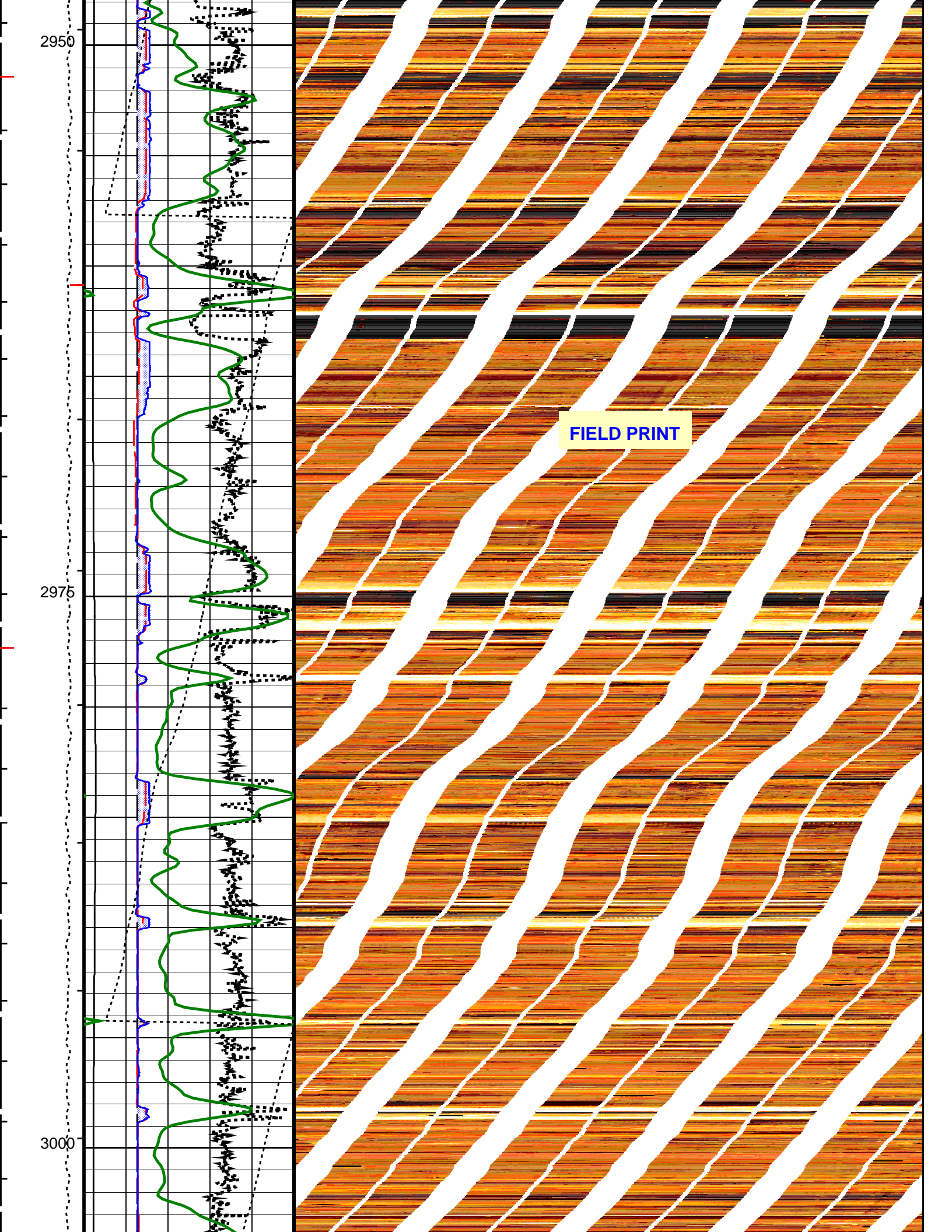


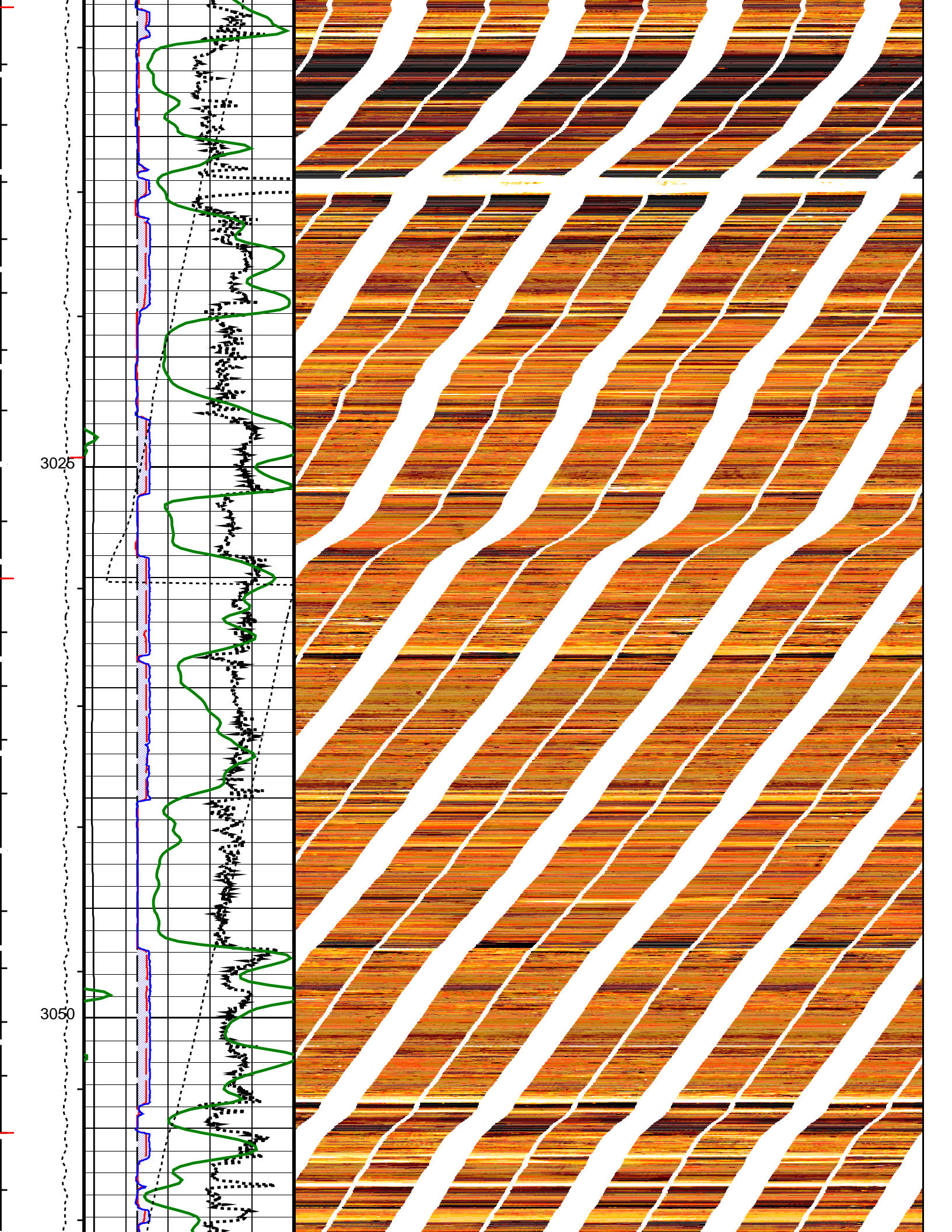


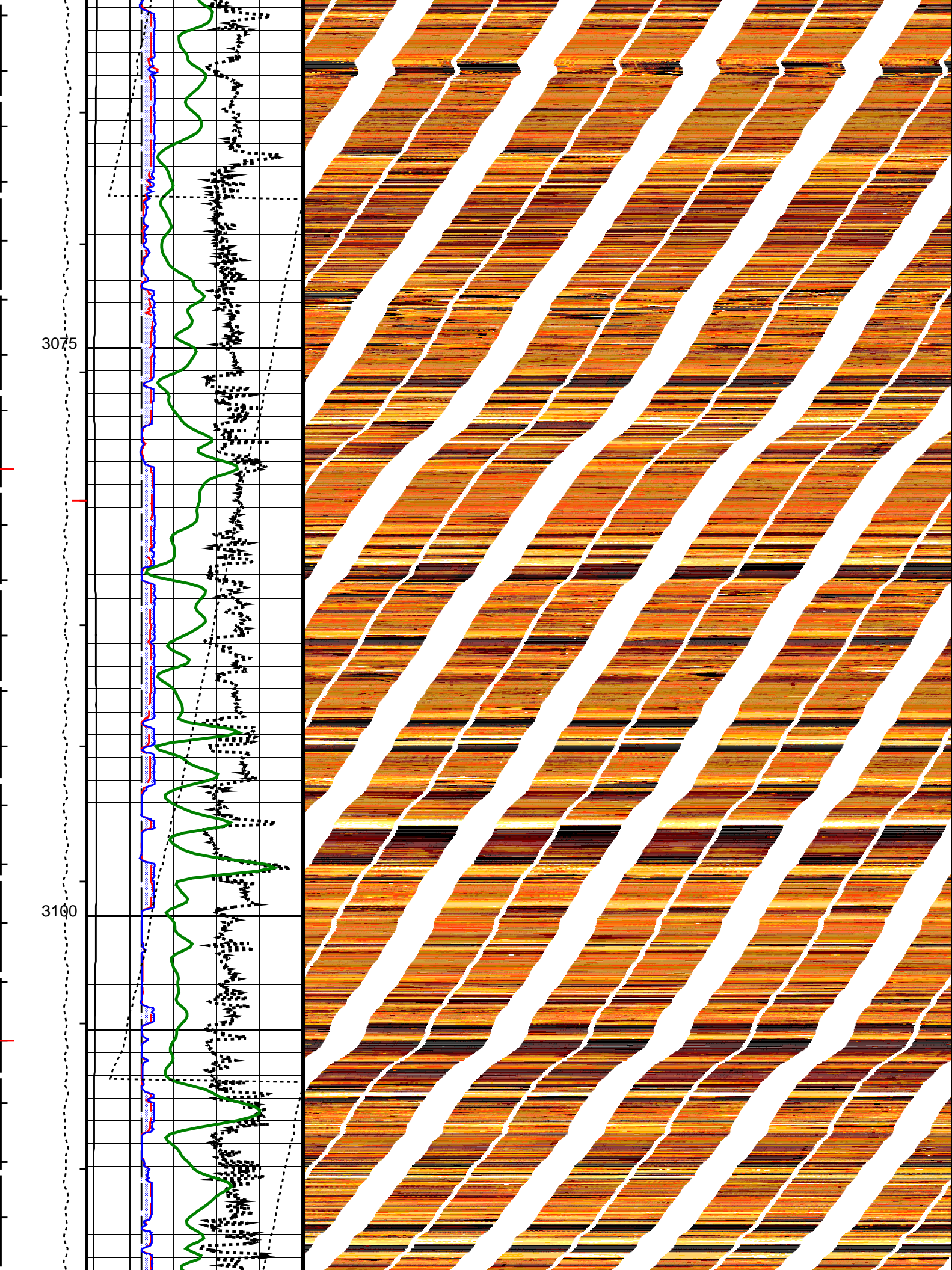


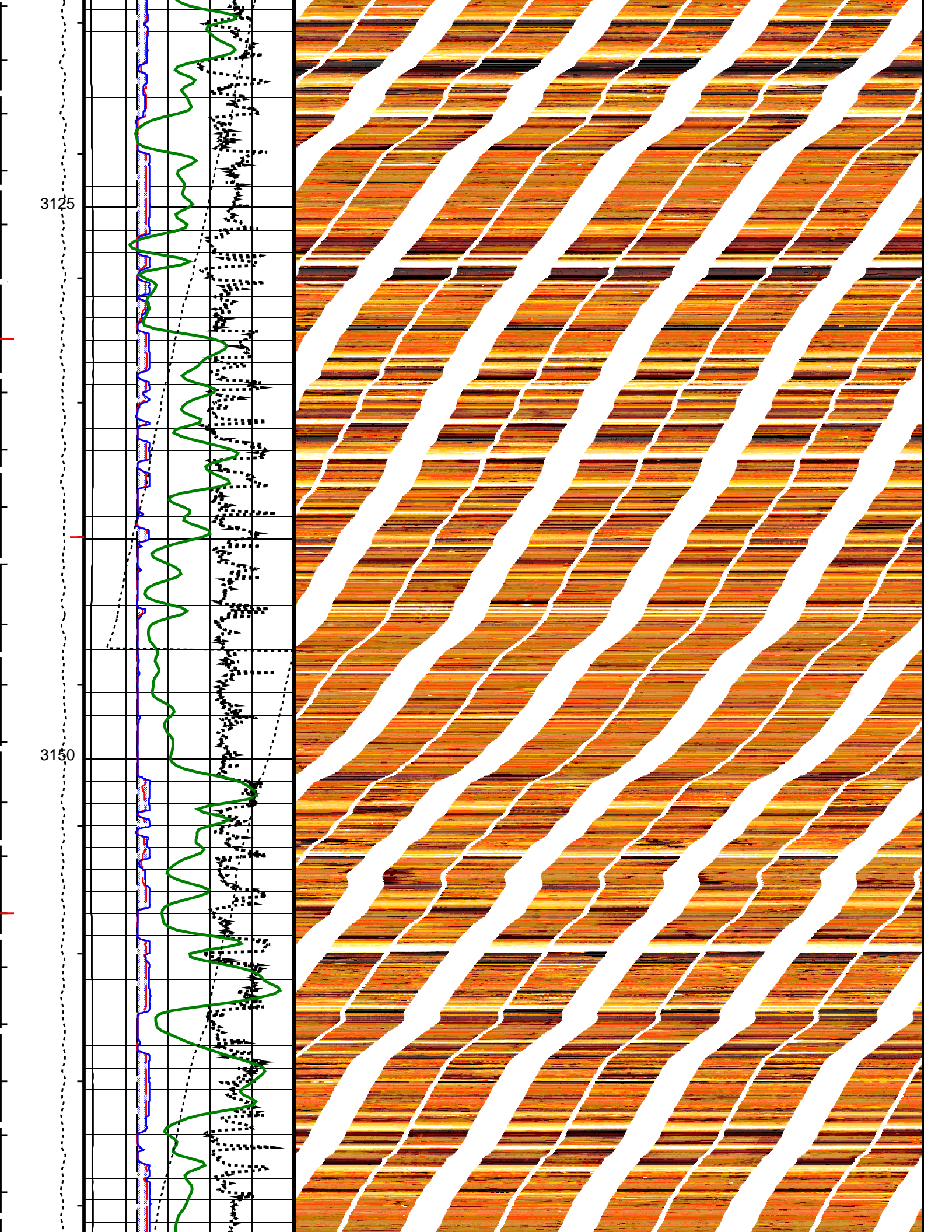












3175

TENS

P1AZ FBST

RB FBST

3200

HGR

HAZIM

FBCR

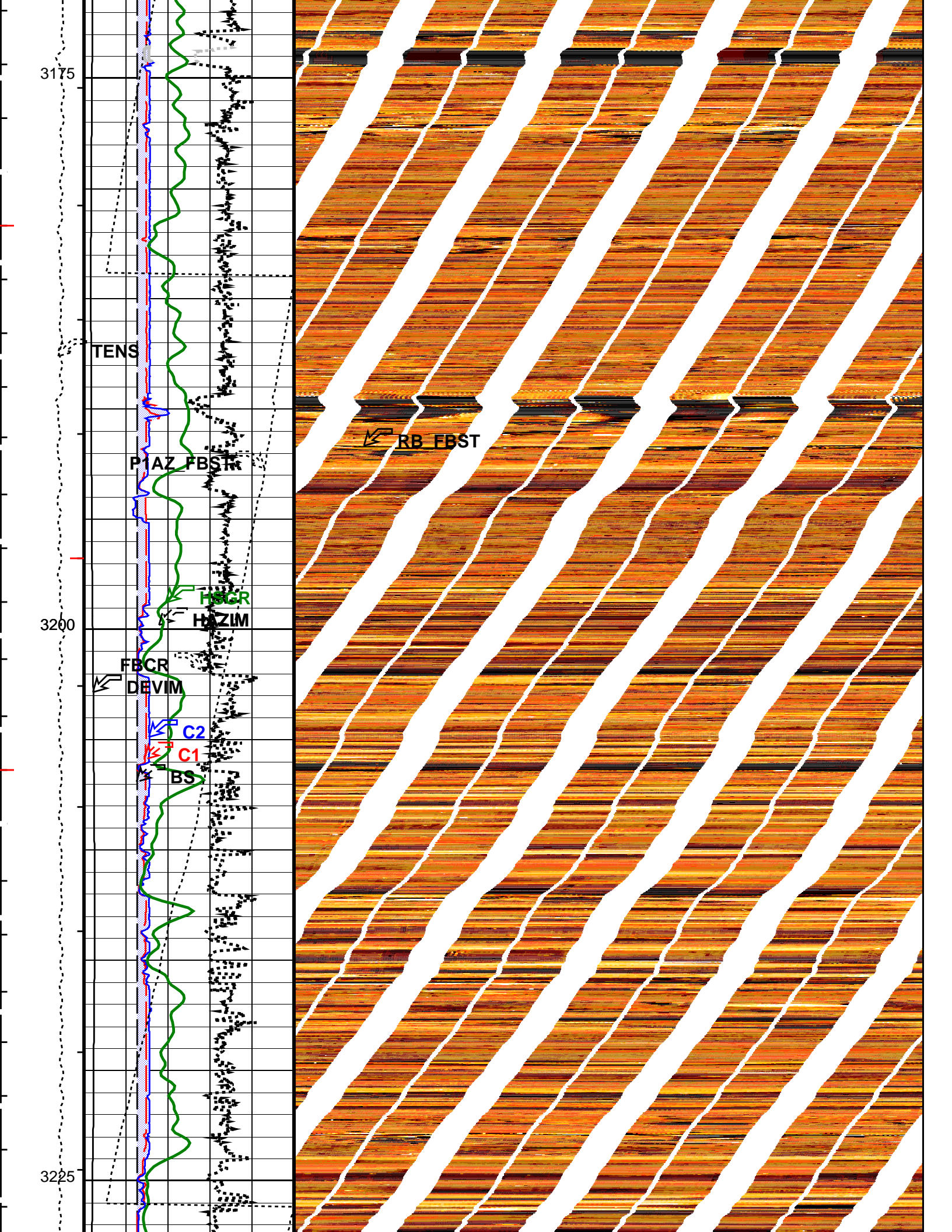
DEVIM

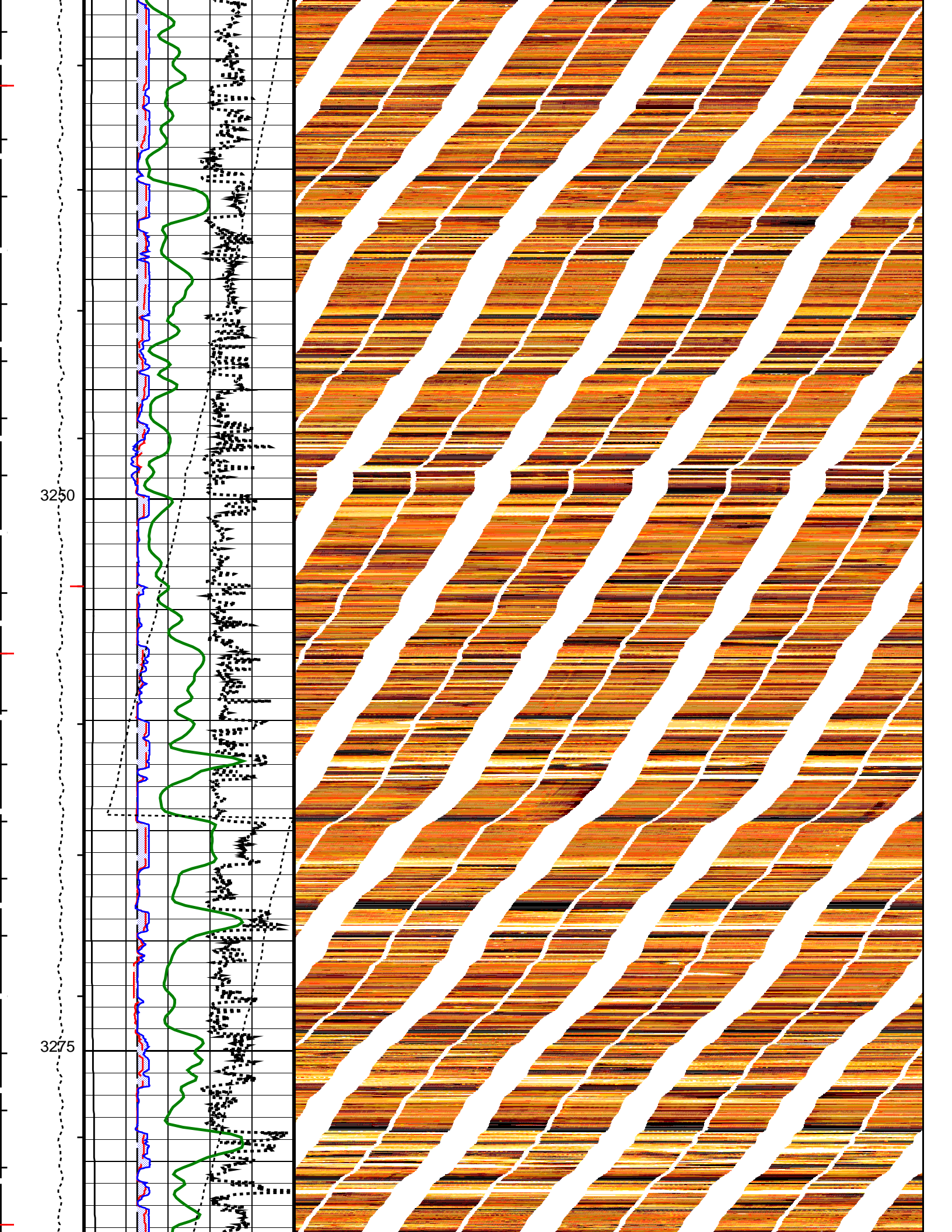
C2

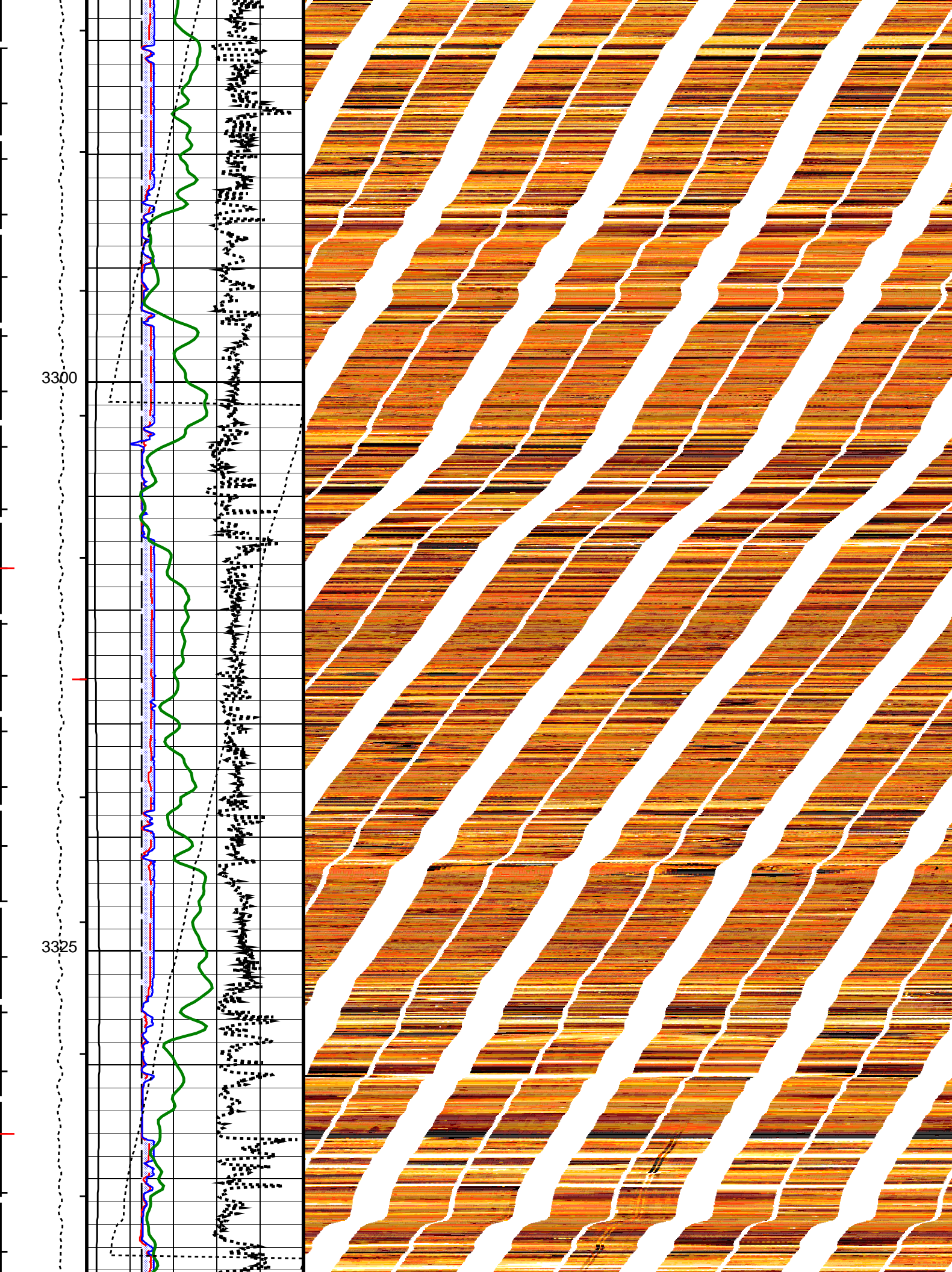
C1

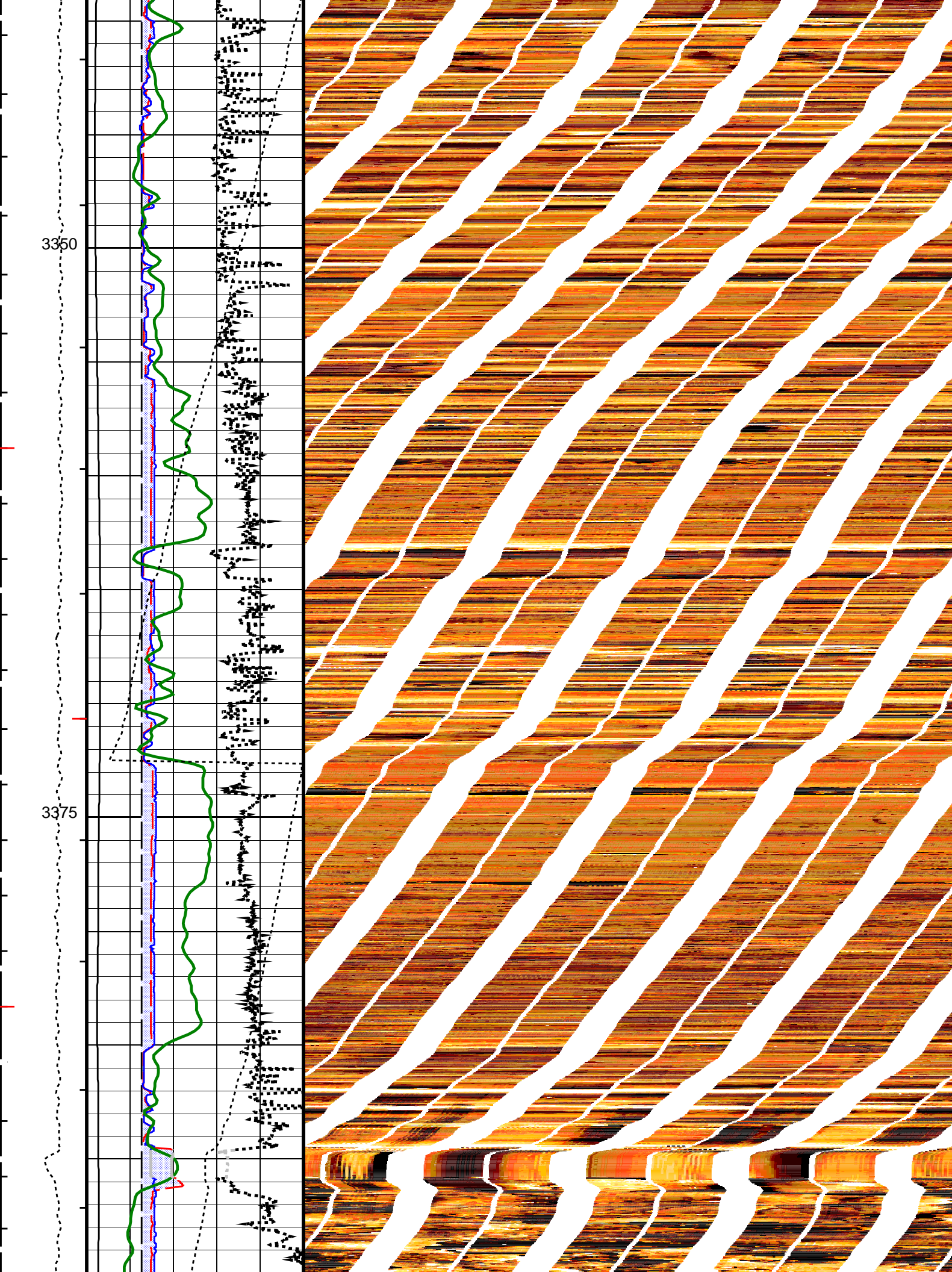
BS

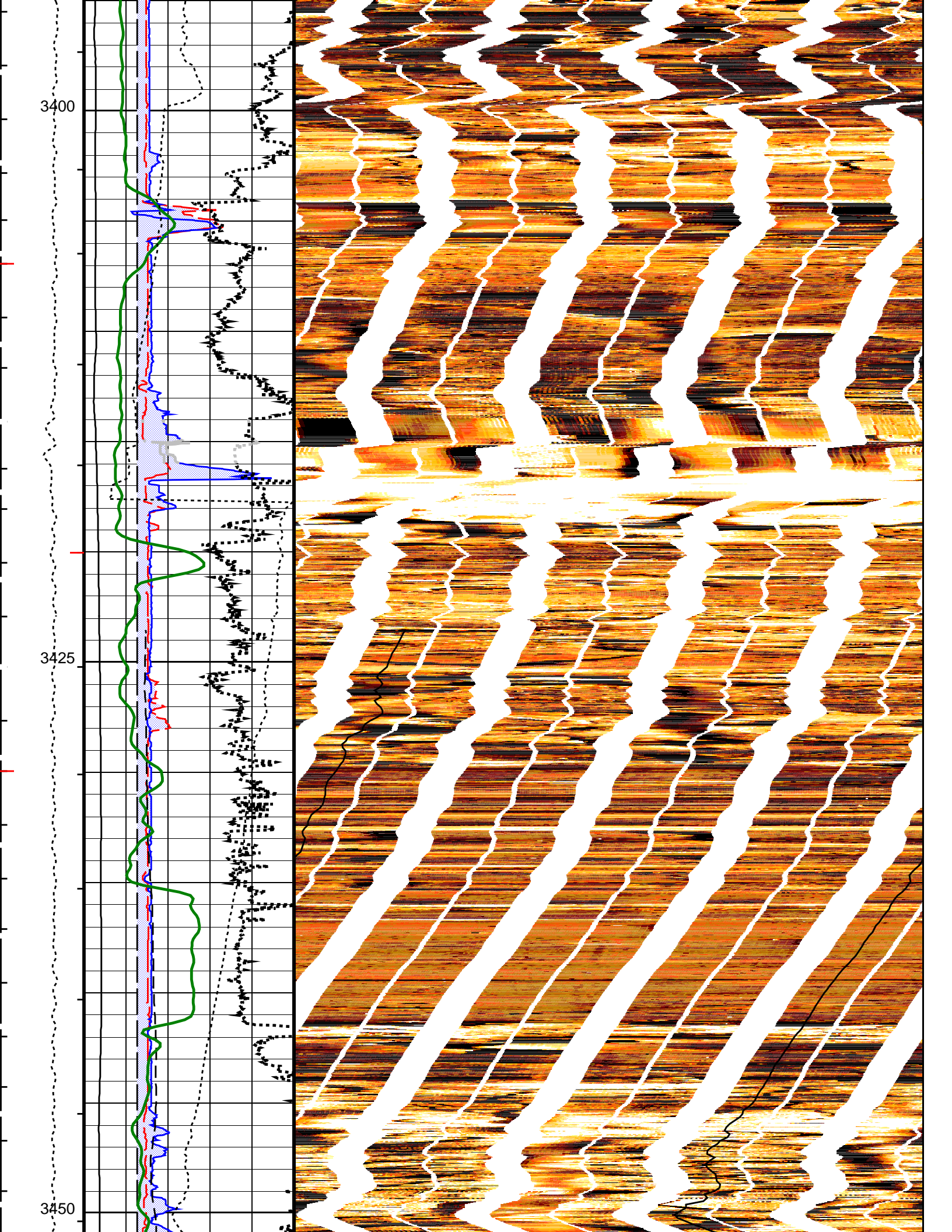
3225

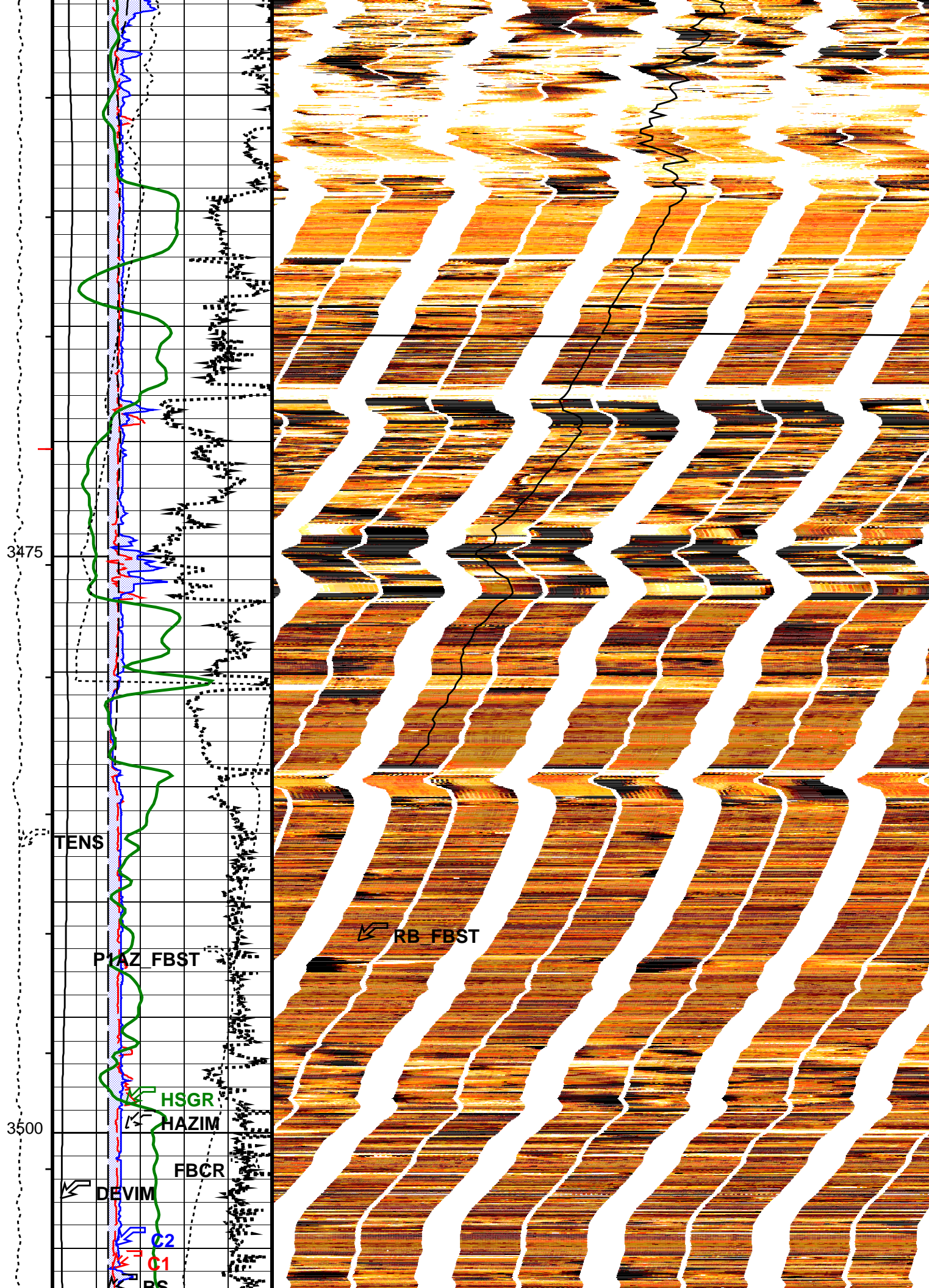


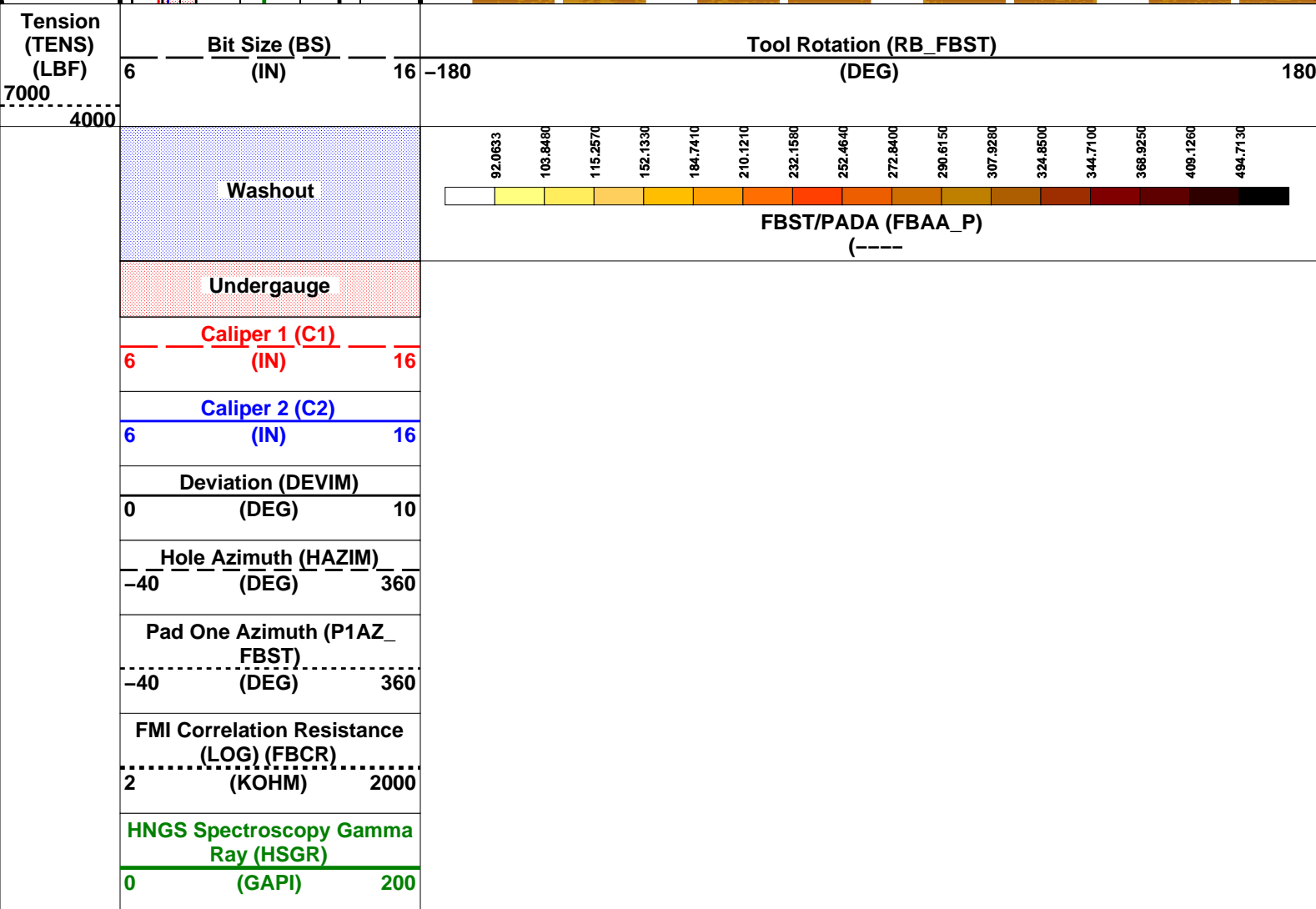












PIP SUMMARY

- └ Integrated Hole Volume Minor Pip Every 0.1 M3
- └ Integrated Hole Volume Major Pip Every 1 M3
 - └ Integrated Cement Volume Minor Pip Every 0.1 M3

