



RESERVAL GAS RATIO LOG

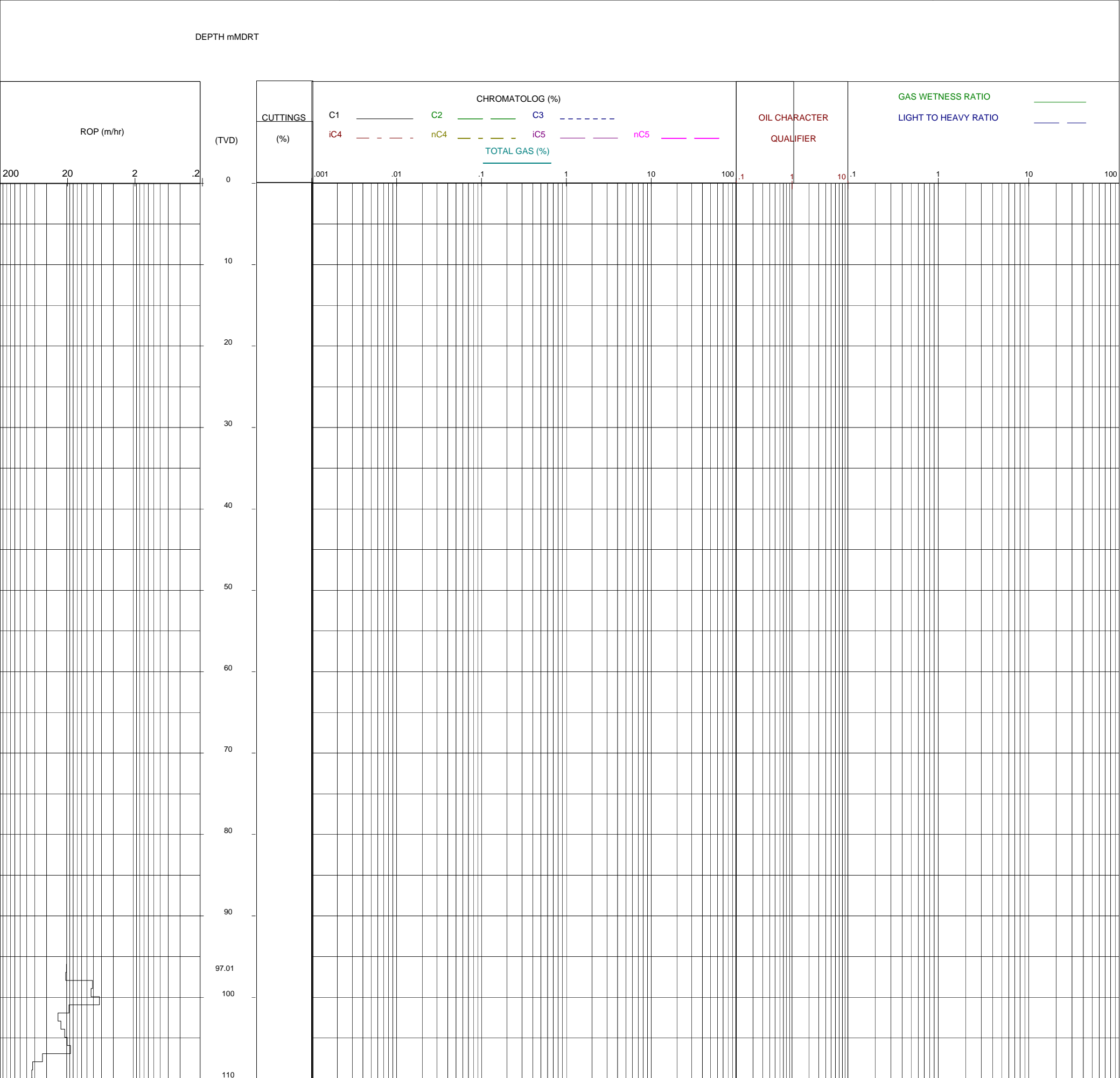


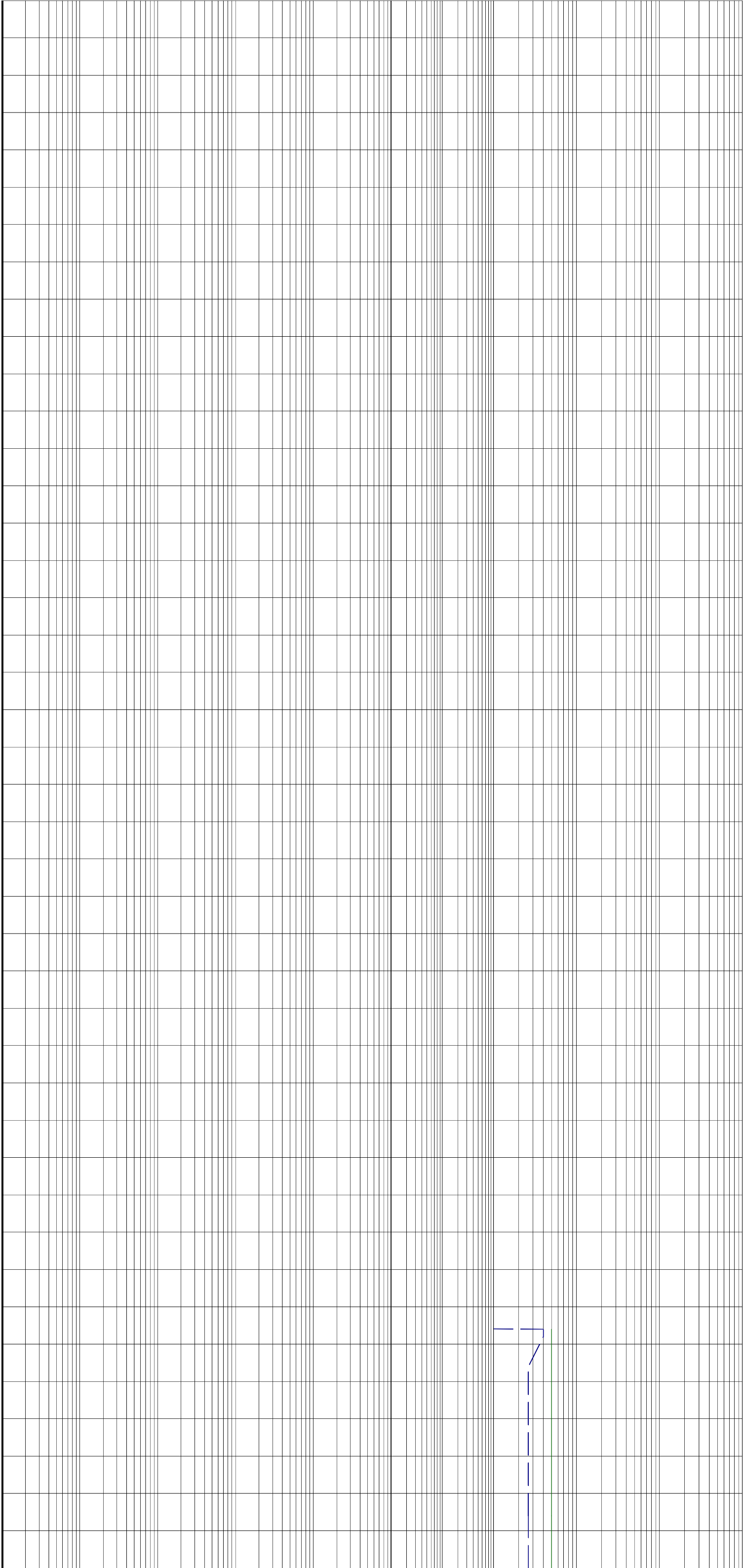
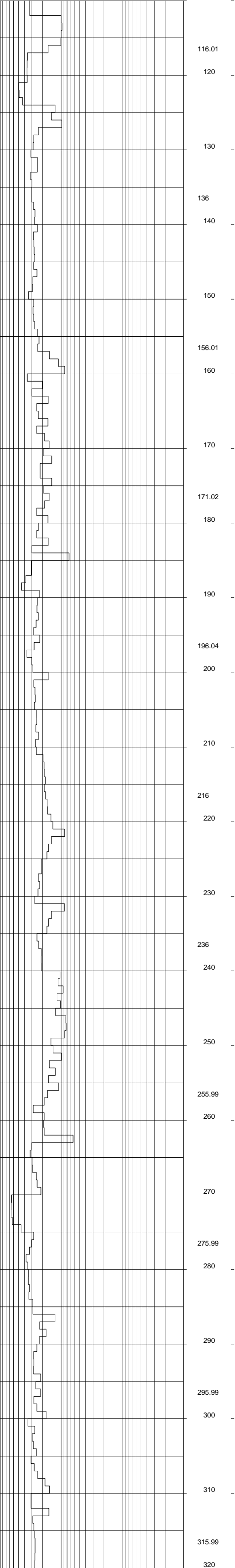
WELL : TREFOIL-2

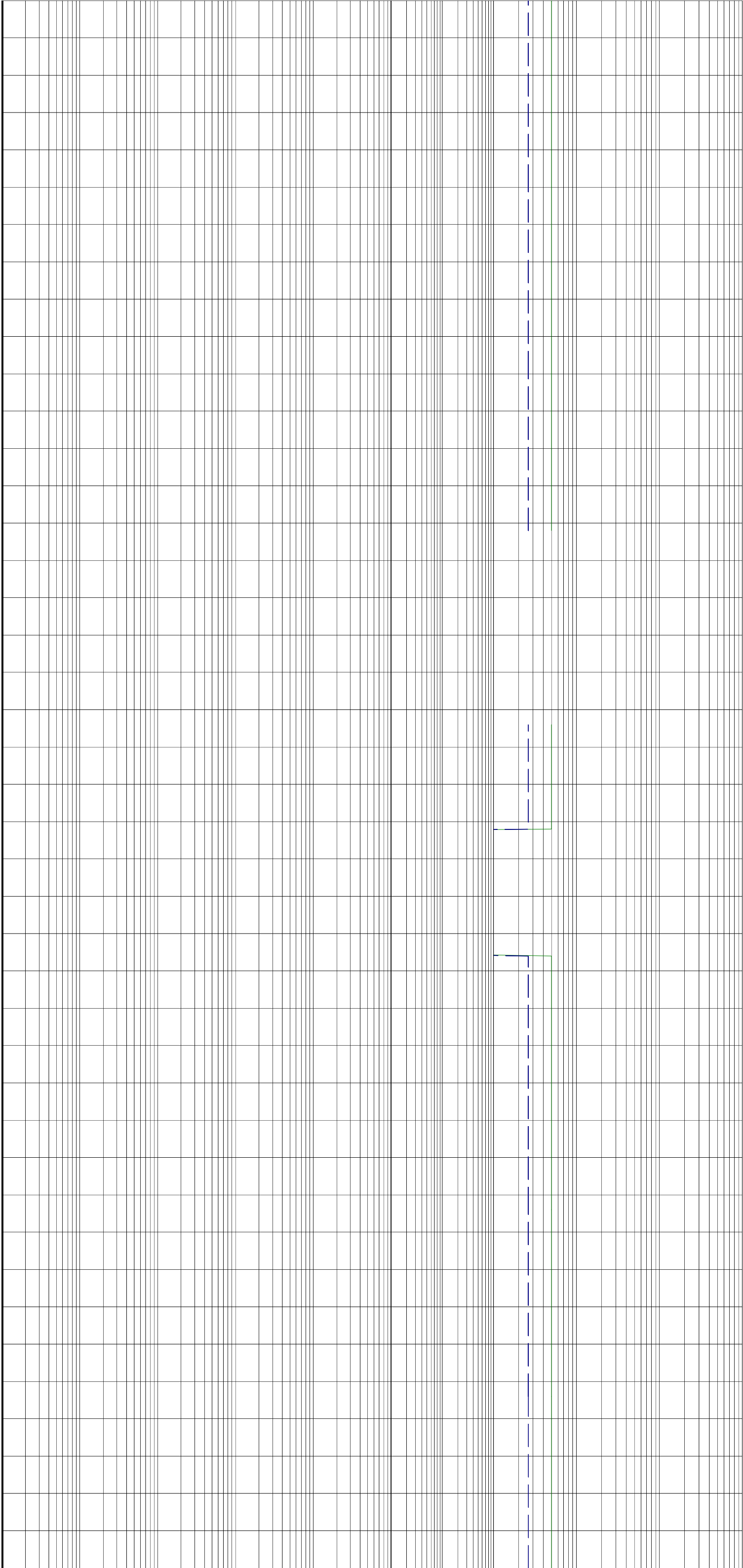
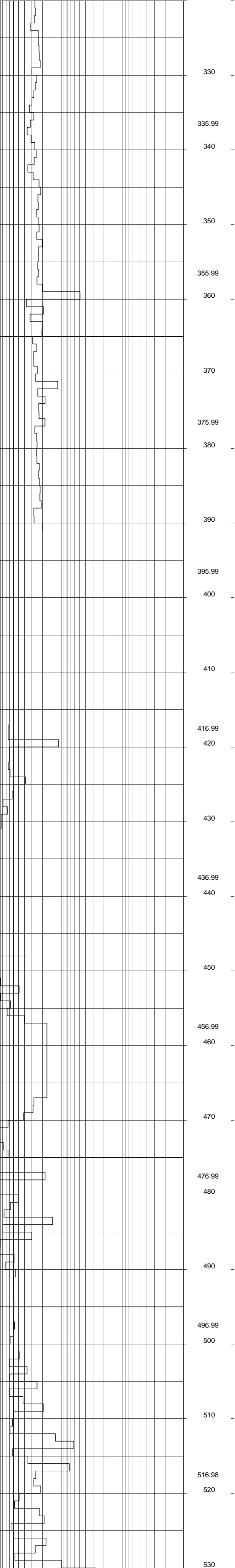
FROM (m): 0	TO (m): 3270	SCALE: 1/ 500
-------------	--------------	---------------

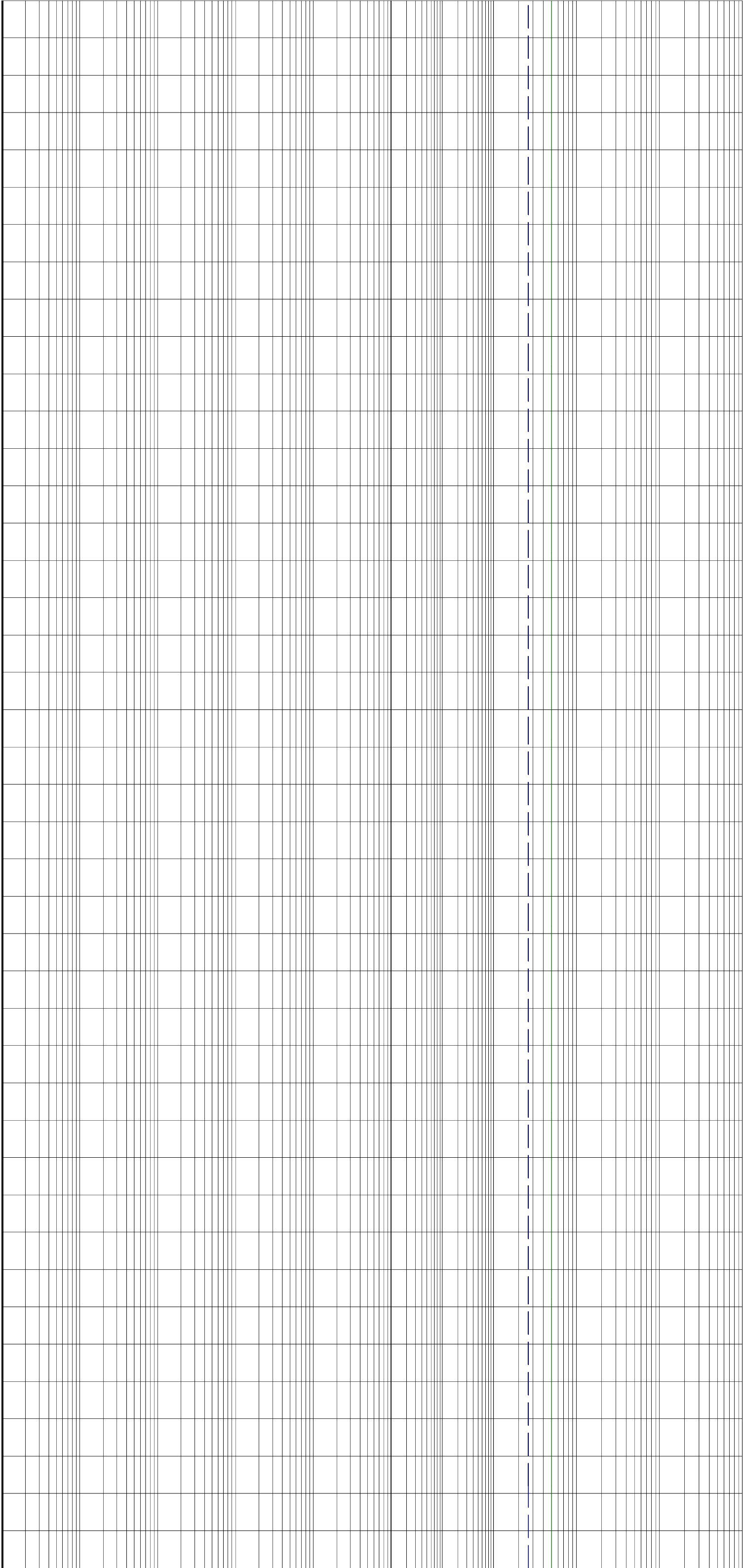
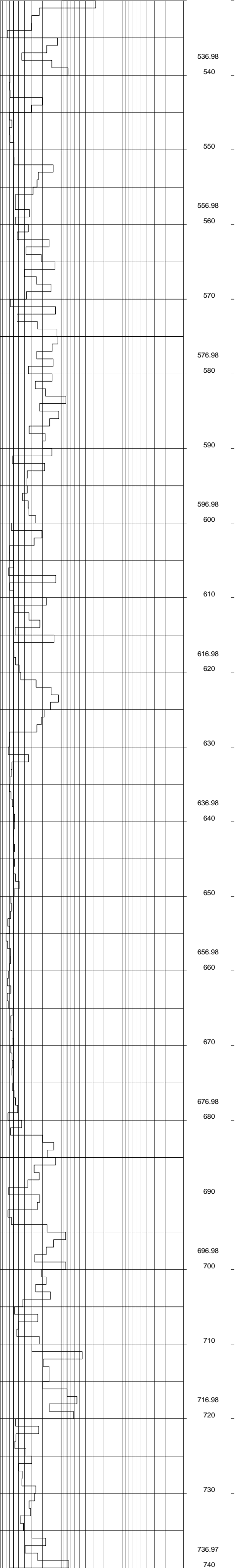
Country : AUSTRALIA		Latitude : 39 53' 07.93" S		762mm (30") at (m MDRT) : 153.00		Spud Date : 06-10-2009	
Region : TASMANIA		Longitude : 145 22' 14.62" E		340mm (13 3/8") at (m MDRT) : 930.00		Total Depth Date : 18-11-2009	
Field : TREFOIL		X (m) : 360690.389		245mm (9 5/8") at (m MDRT) : 2520.00		Total Depth (m MDRT) : 3235.0	
Permit : T/18P		Y (m) : 5583676.588				Total Depth (m TVSS) : 3234.0	
Well Type : APPRAISAL		RT-Sealevel (m MSL) : 26				Status : P & A	
Rig Name : KAN TAN 4		RT-Seabed (m) : 95					

GAS RATIOS FORMULAE		<div><div><div>Dolomite</div><div>Calcirudite</div><div>Calcarenite</div><div>Calcsiltite</div><div>Calcilutite</div><div>Sandy Claystone</div><div>Silty Claystone</div><div>Calcareous Claystone</div><div>Argil Calcilutite</div></div><div><div>Claystone</div><div>Siltstone</div><div>Sandstone</div><div>Coal</div><div>Intrusive Volcanics</div><div>Volcaniclastics</div><div>Tuff</div><div>Cement</div></div><div><div>Argil Siltstone</div><div>Sandy Siltstone</div><div>Calcareous Siltstone</div><div>Argil Sandstone</div><div>Calcareous Sandstone</div><div>Dolomitic Sandstone</div><div>Silty Sandstone</div></div><div><div>Calcareous</div><div>Dolomitic</div><div>Fossils</div><div>Foraminiferae</div><div>Carbonaceous</div><div>Chert</div><div>Pyrite</div><div>Glauconite</div><div>Mica</div></div></div>				GEOSERVICES CREW	
<div><div>GAS WETNESS RATIO (Wh)</div><div>GWR = (C2 + C3 + C4 + C5)/ (C1 + C2 + C3 + C4 + C5)*100</div><div>LIGHT TO HEAVY RATIO (Bh)</div><div>LHR = (C1 + C2)/(C3 + C4 + C5)</div><div>OIL CHARACTER QUALIFIER (Ch)</div><div>OCQ = (C4 + C5)/(C3)</div></div>						<div>ALS ENGINEERS</div> <div>N. Elliott</div> <div>G. Gopi</div> <div>B. Barwick</div> <div>MUDLOGGERS</div> <div>P. Currie</div> <div>K.Brzozowska</div> <div>P.Duncan</div> <div>A.Lowndes</div>	

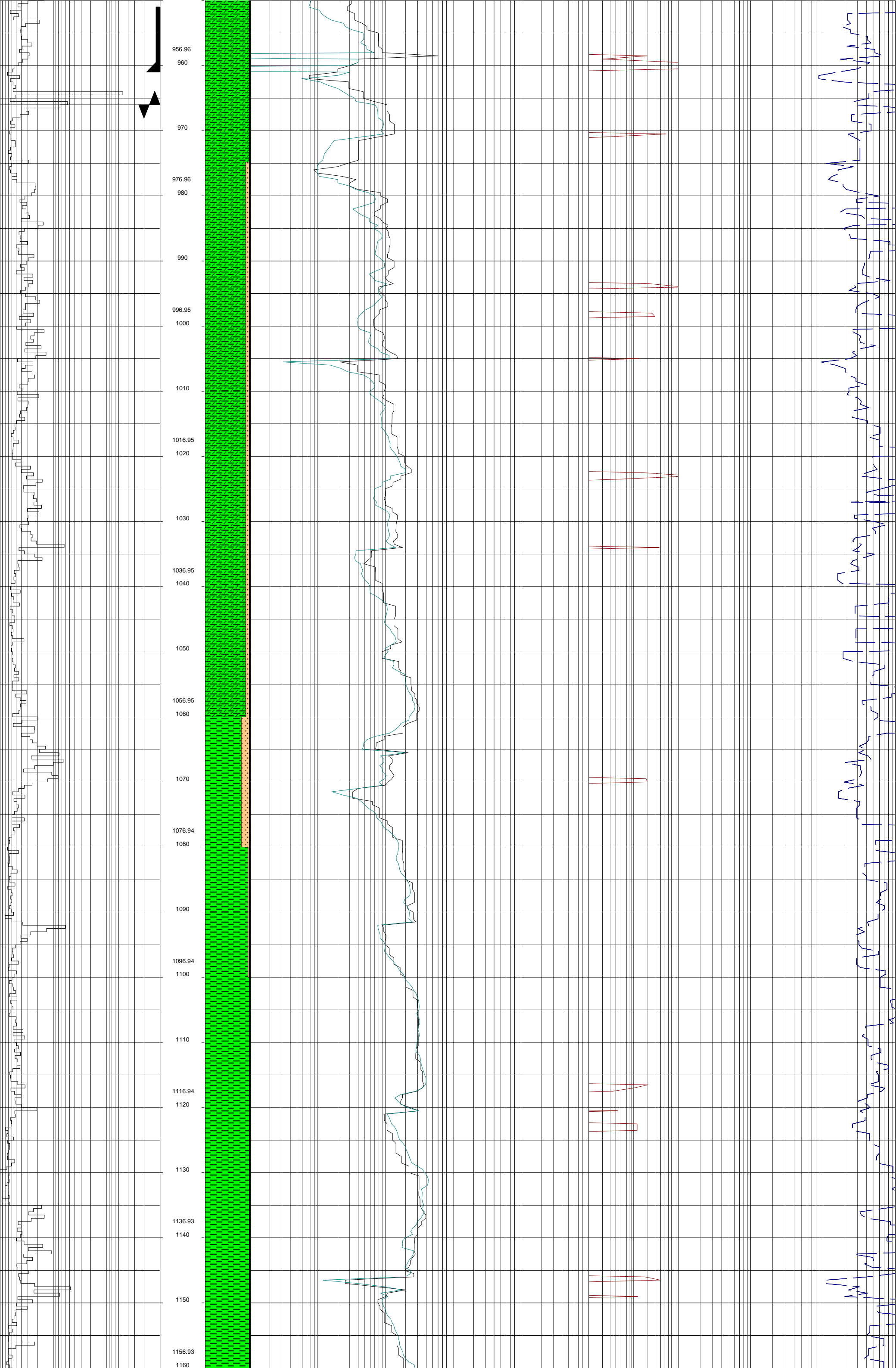


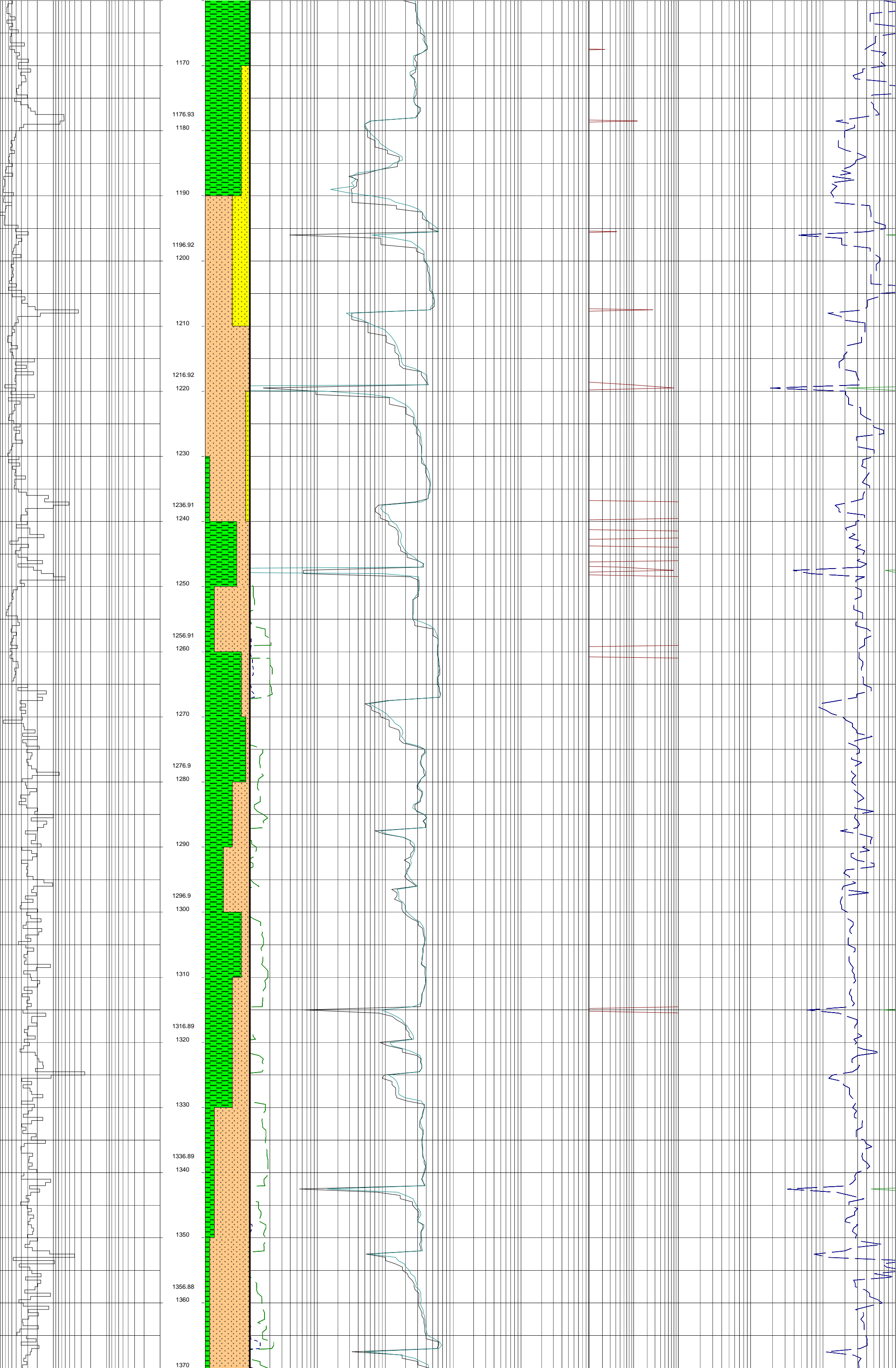


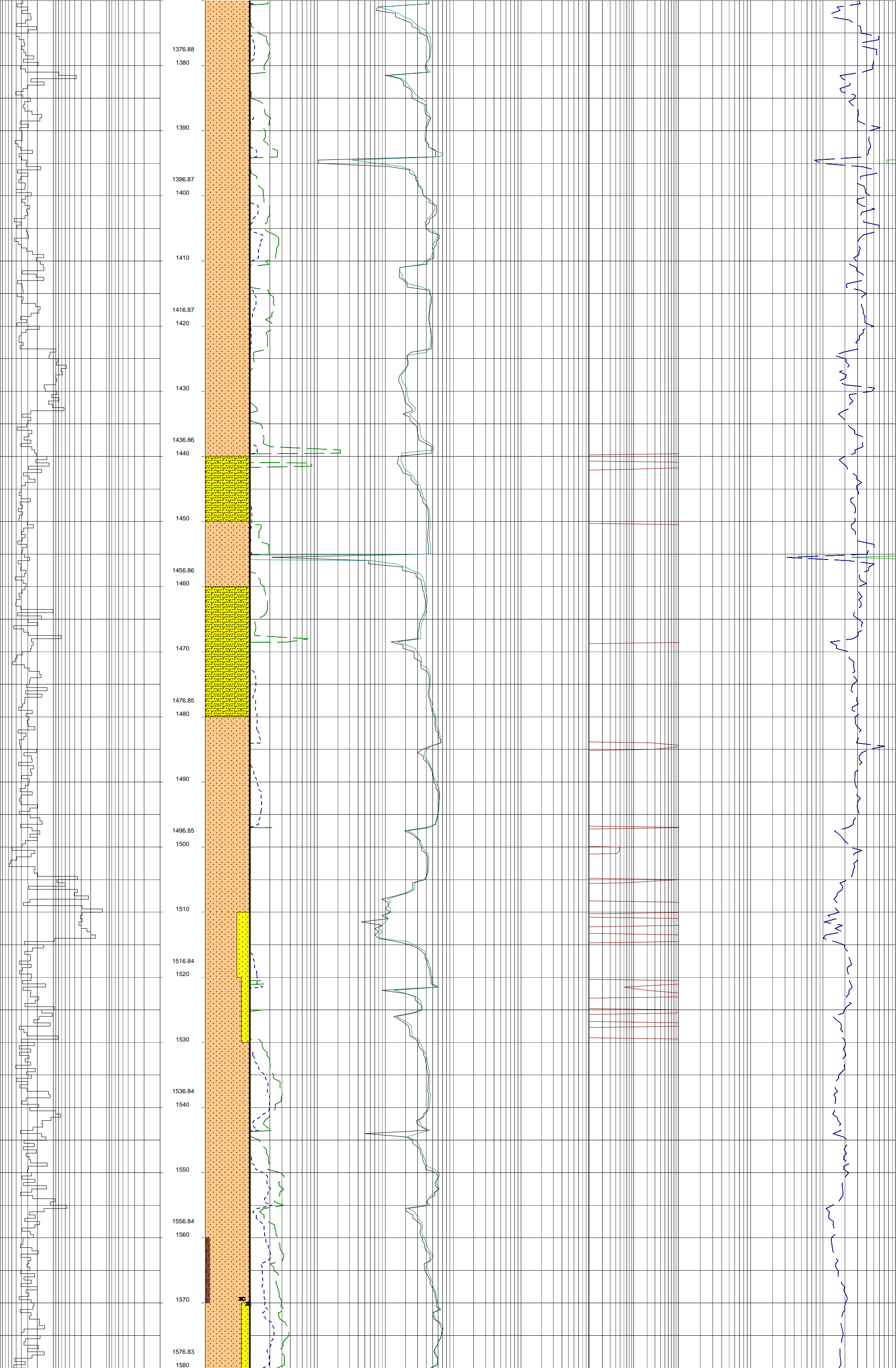


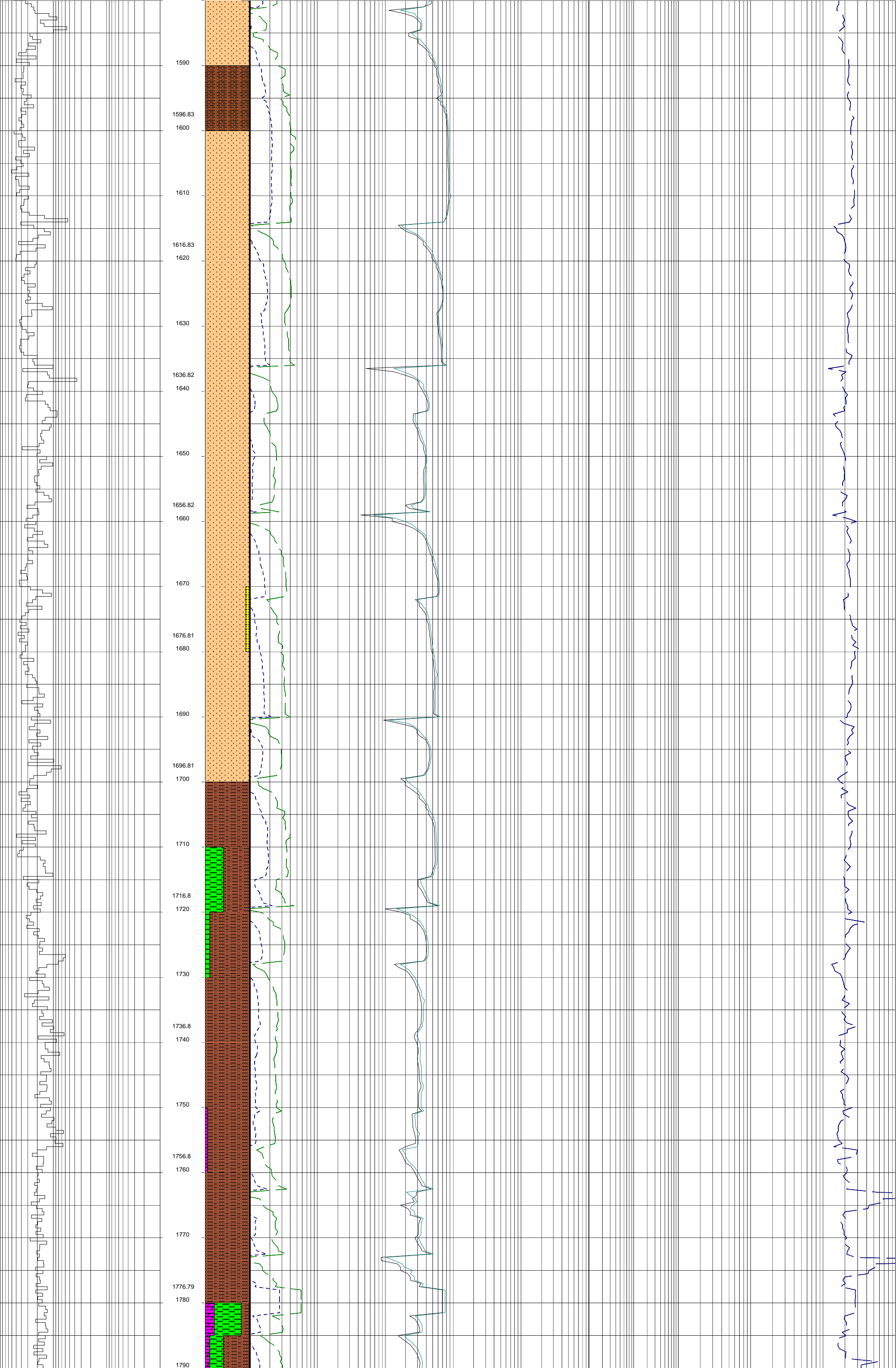


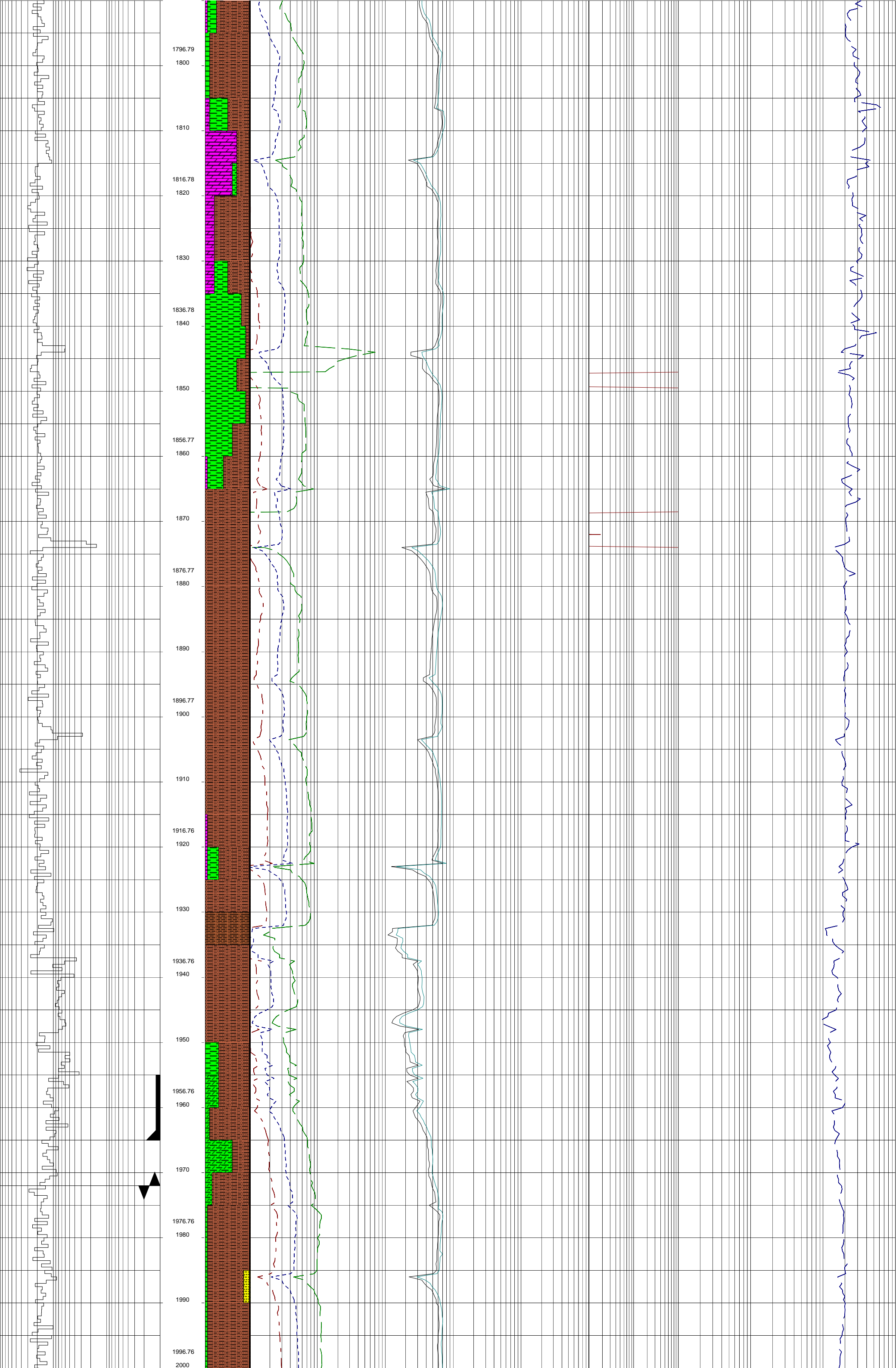


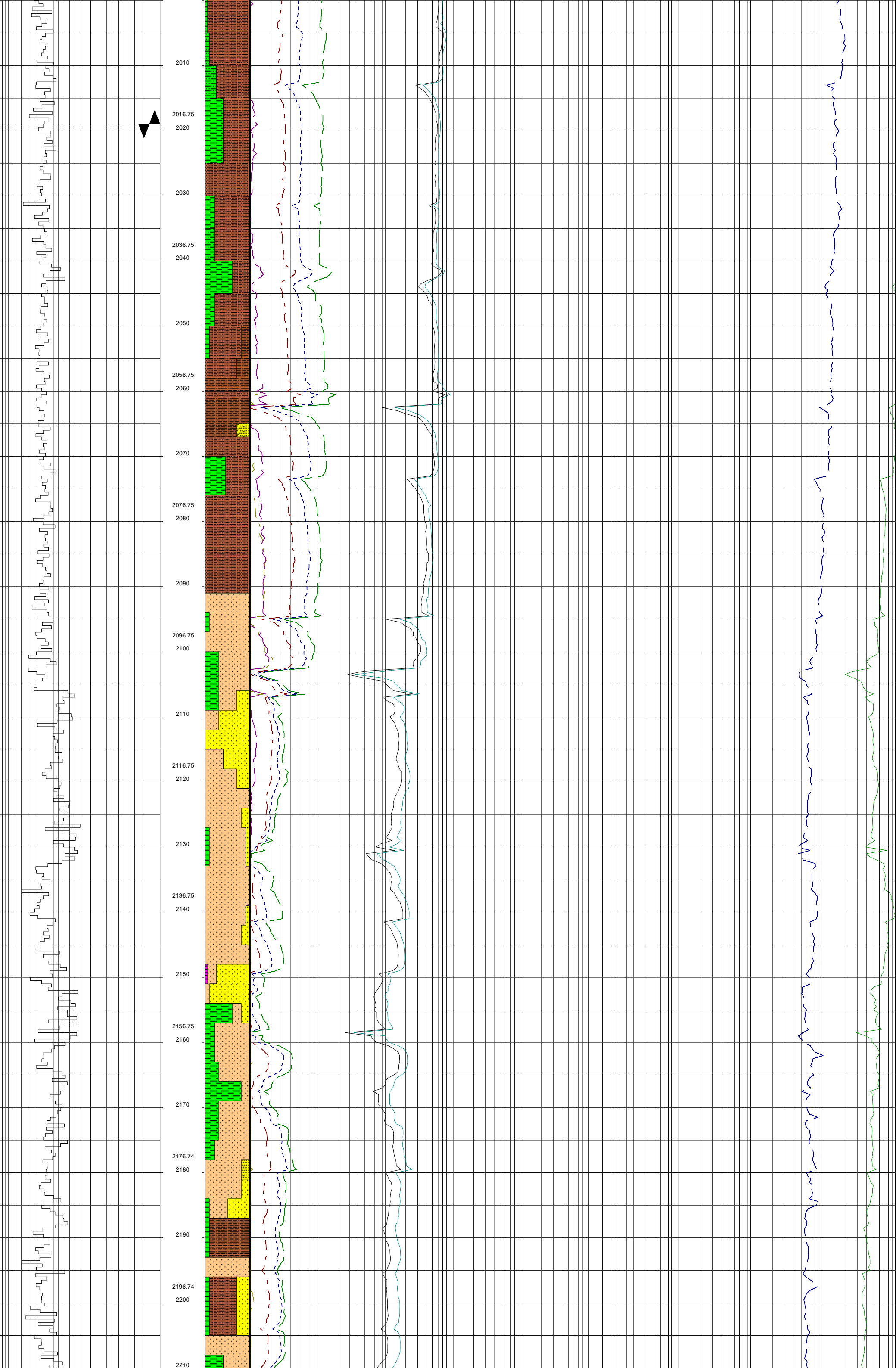


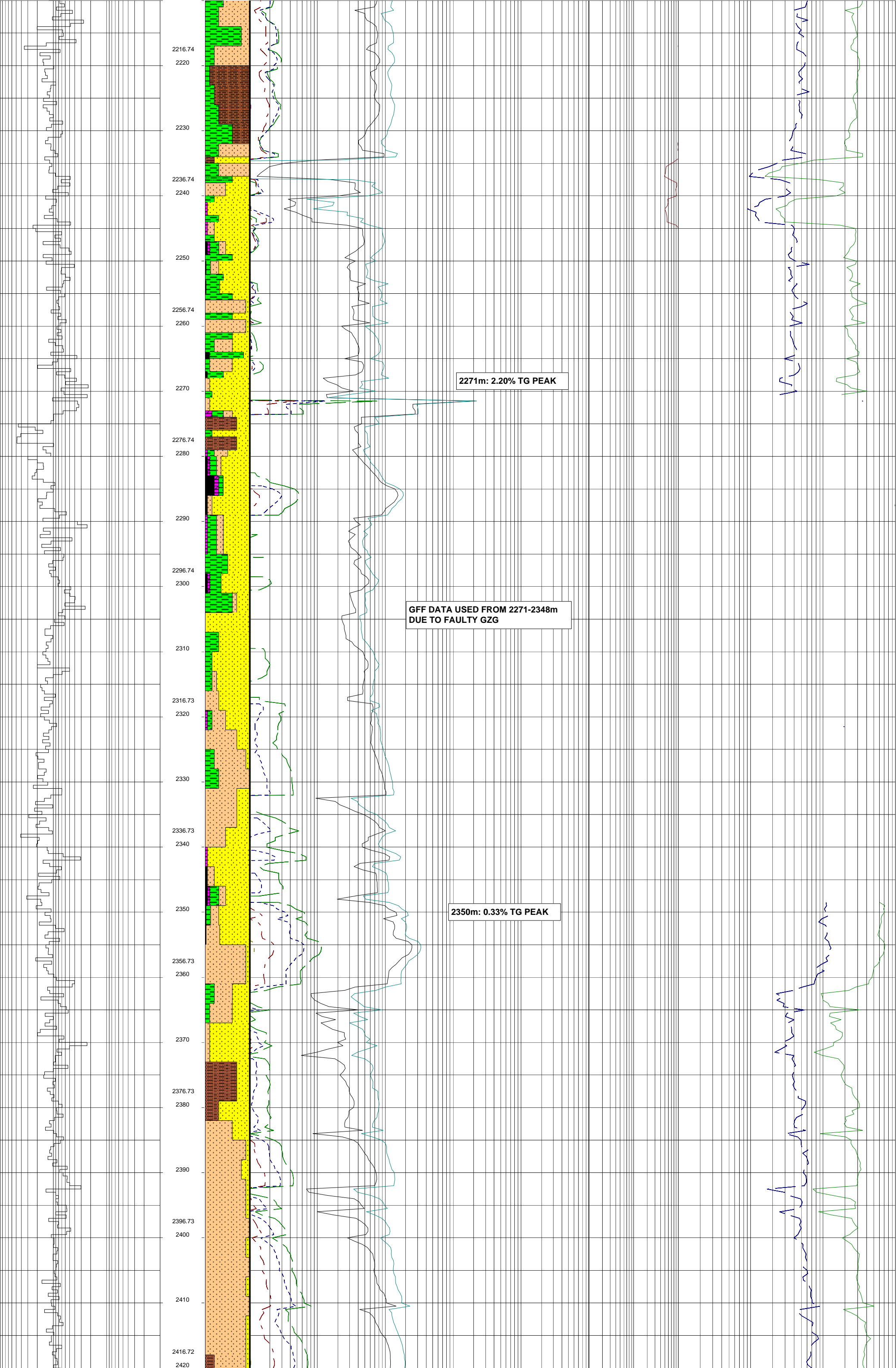


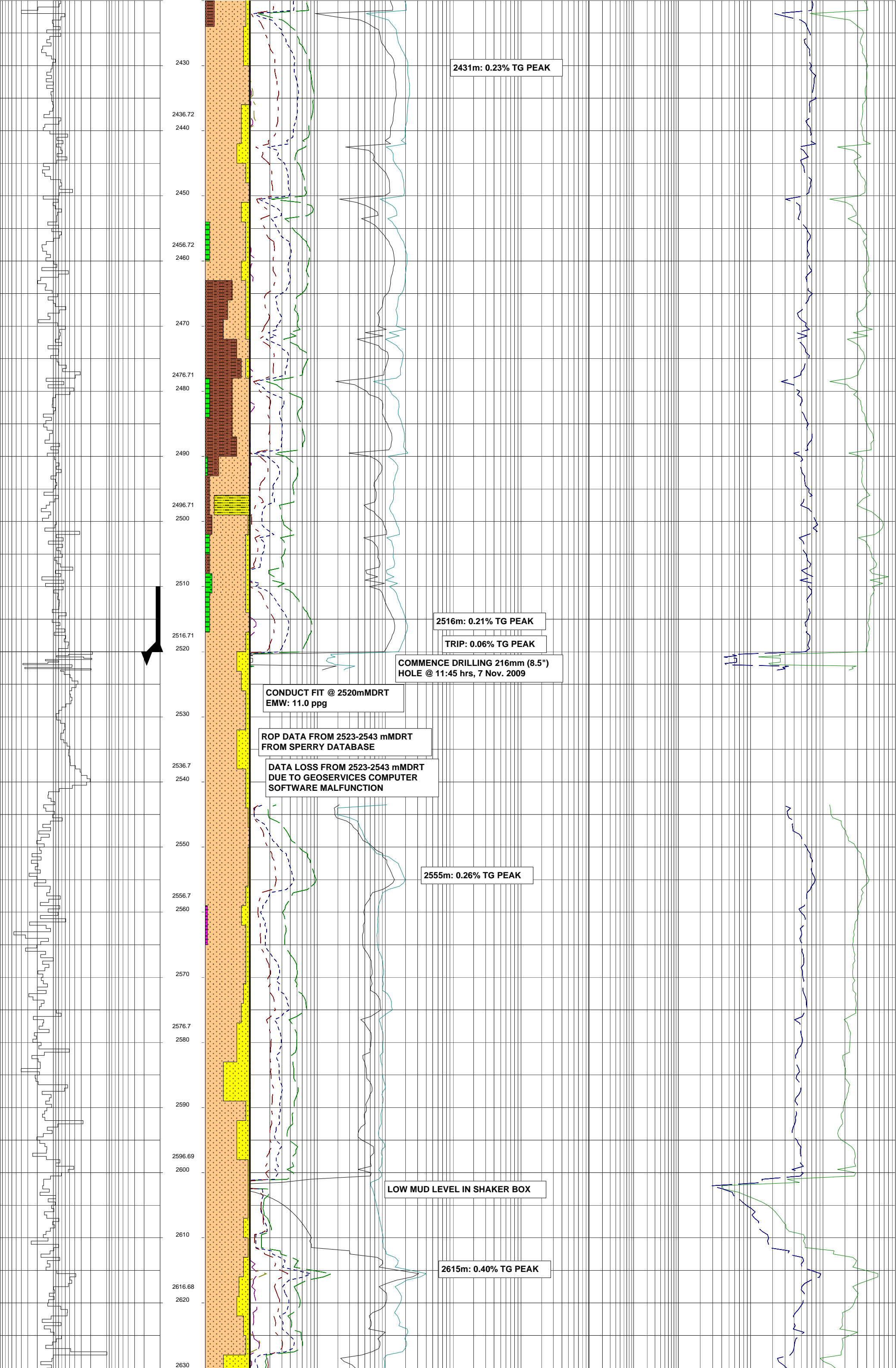


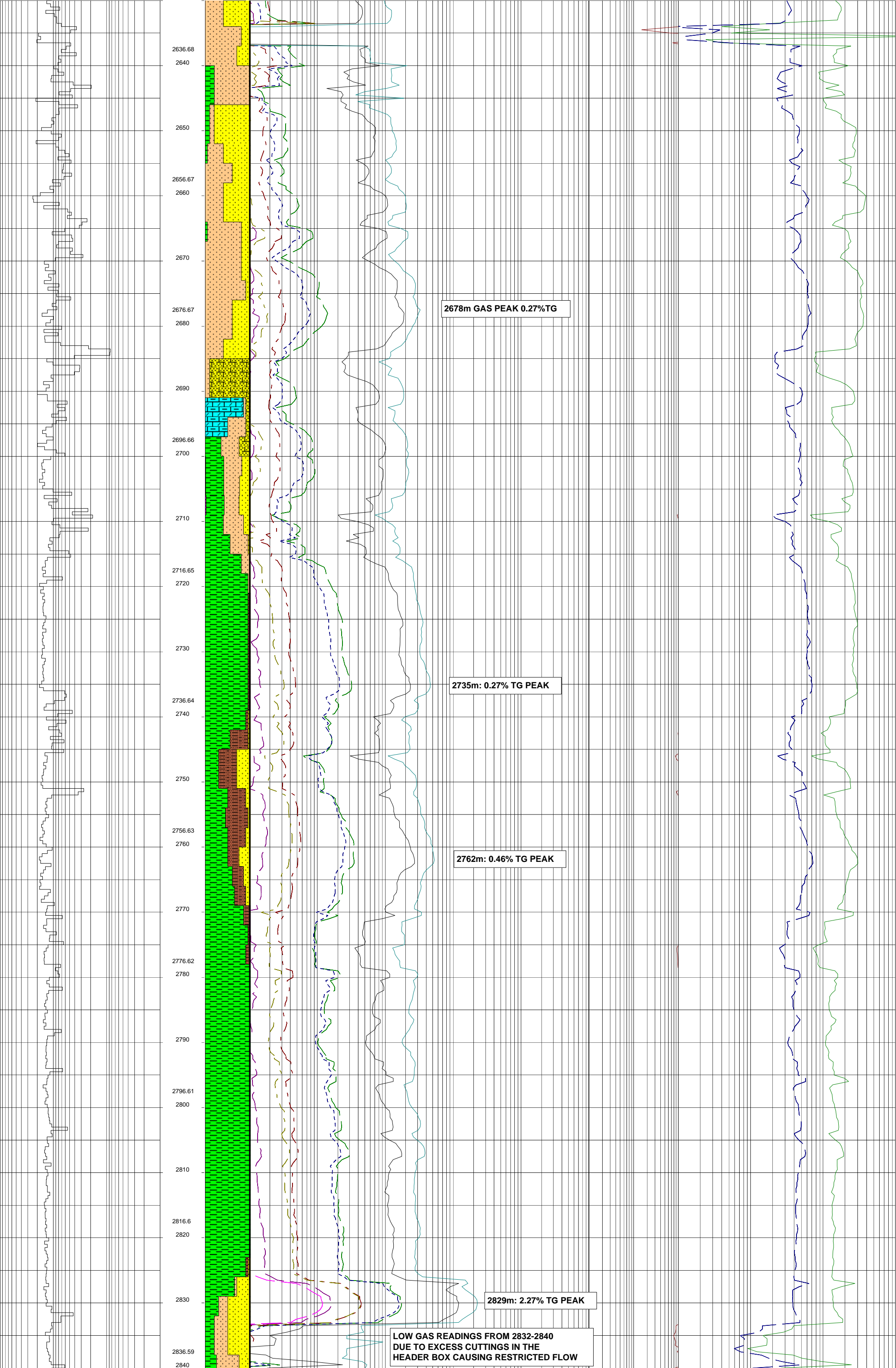


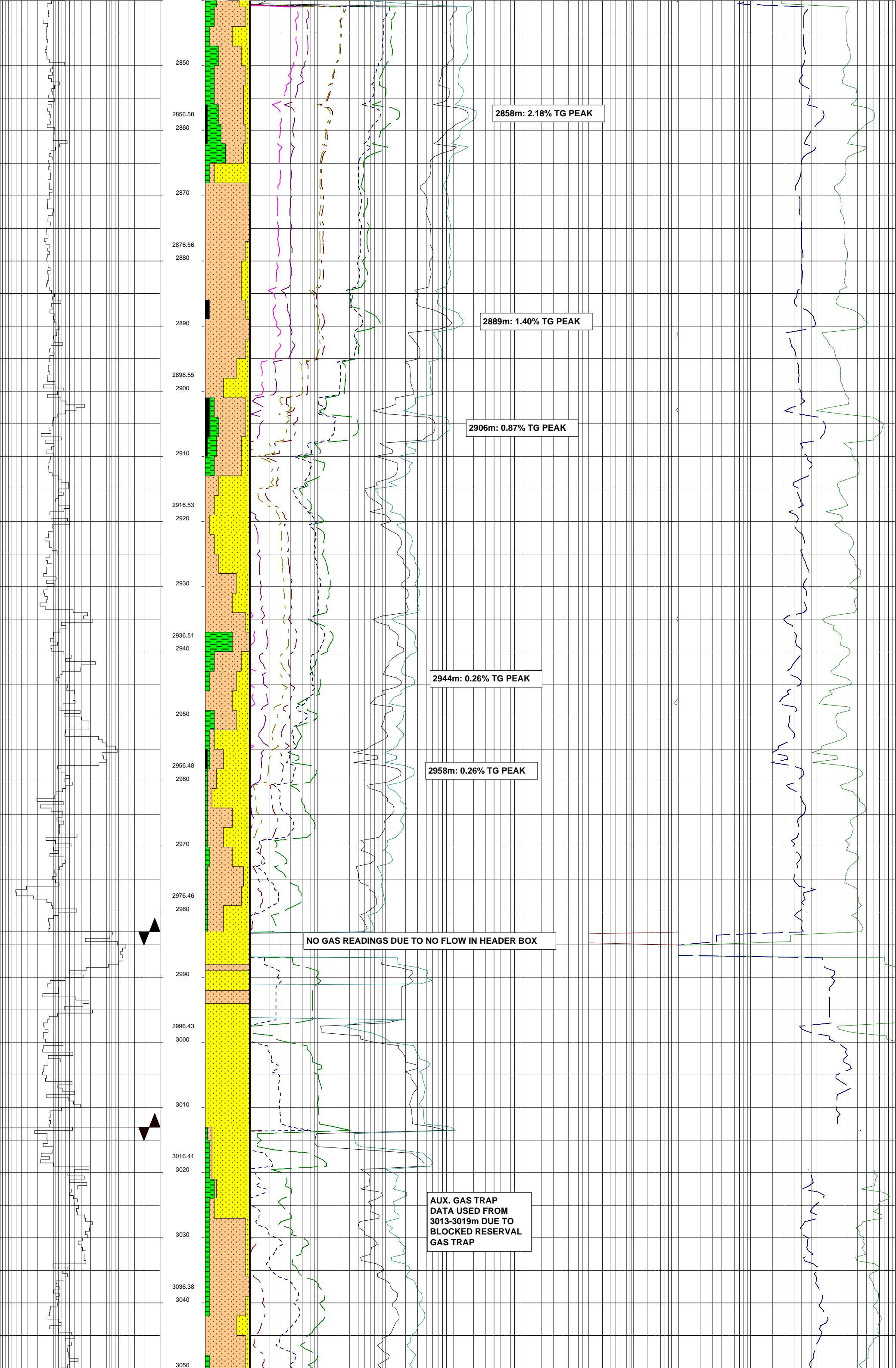


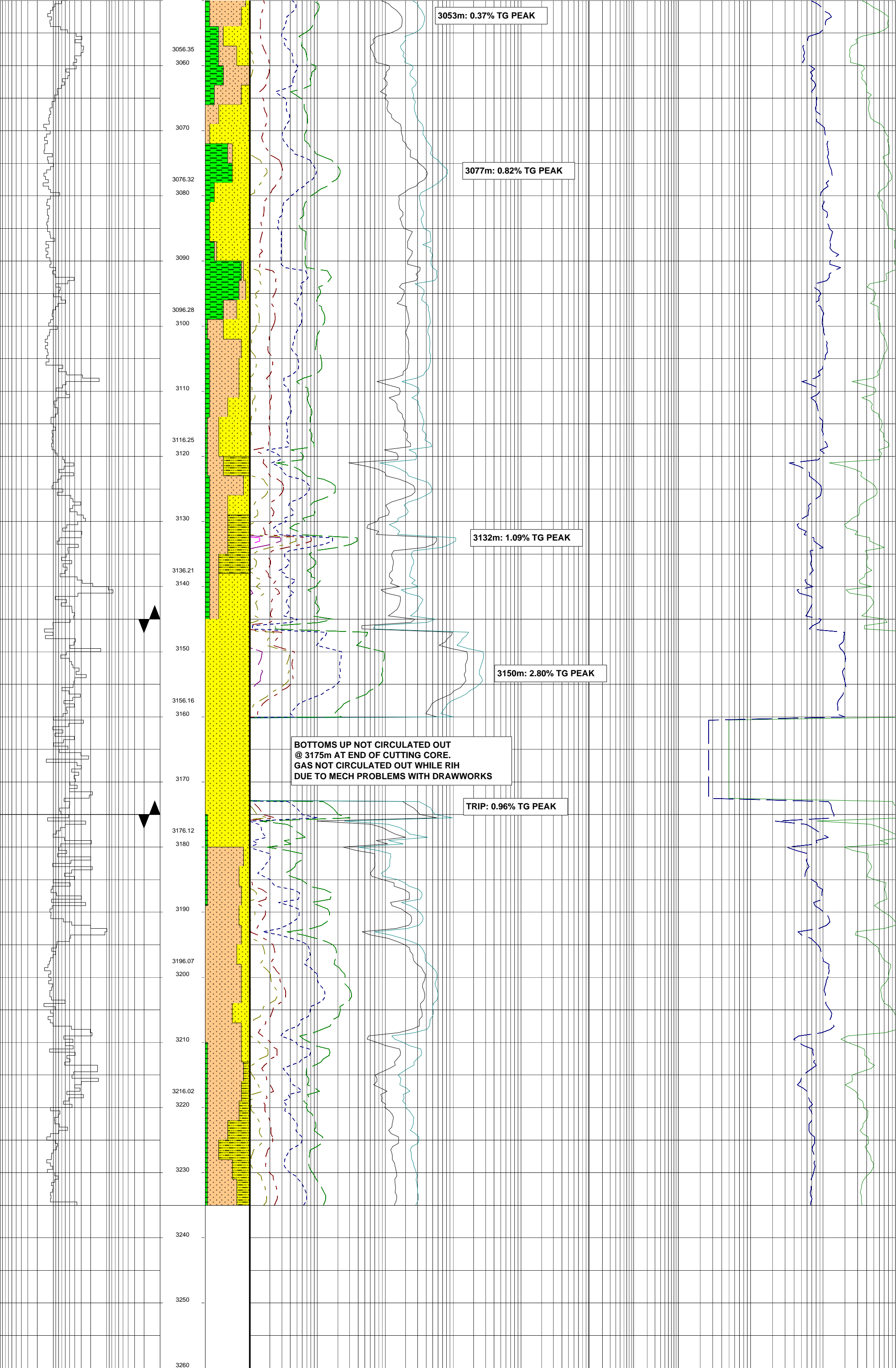












[illegible]