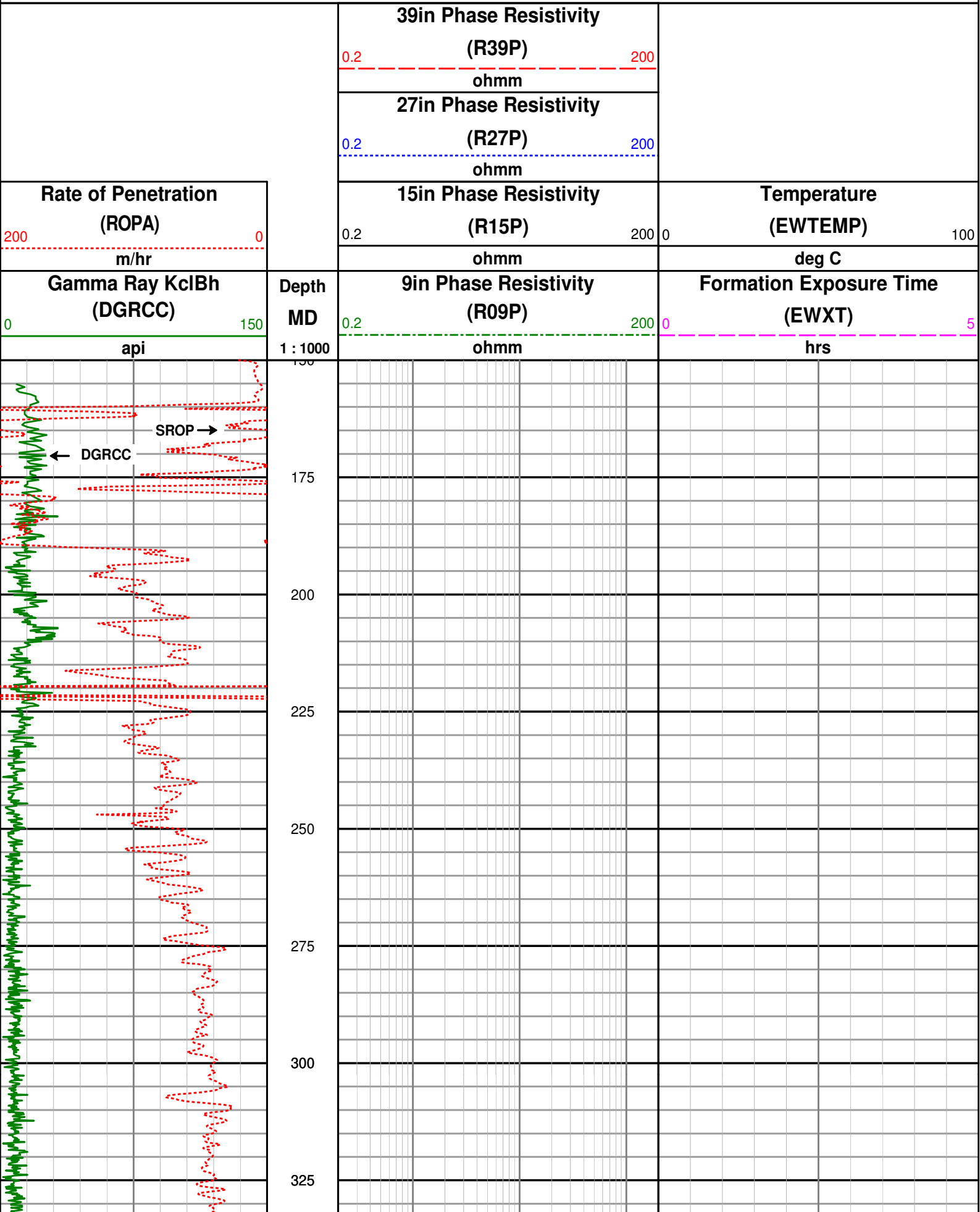
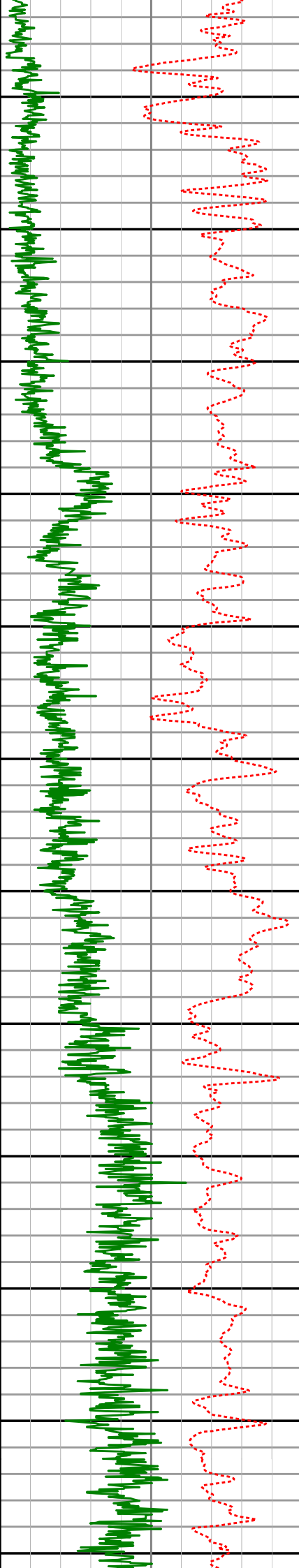


Craigow-1

Tap Oil Ltd

Recorded LWD Data - Field Data





350

375

400

425

450

475

500

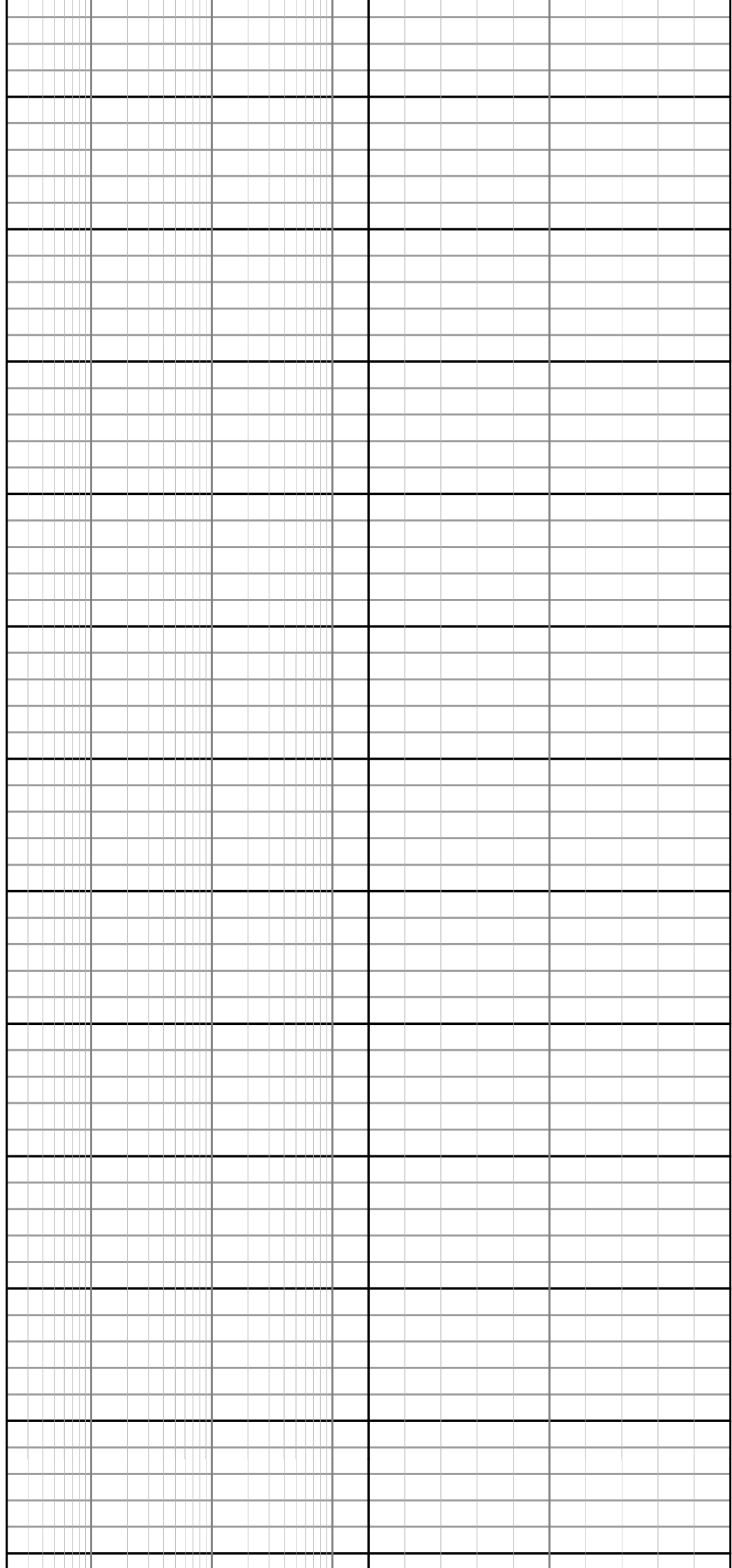
525

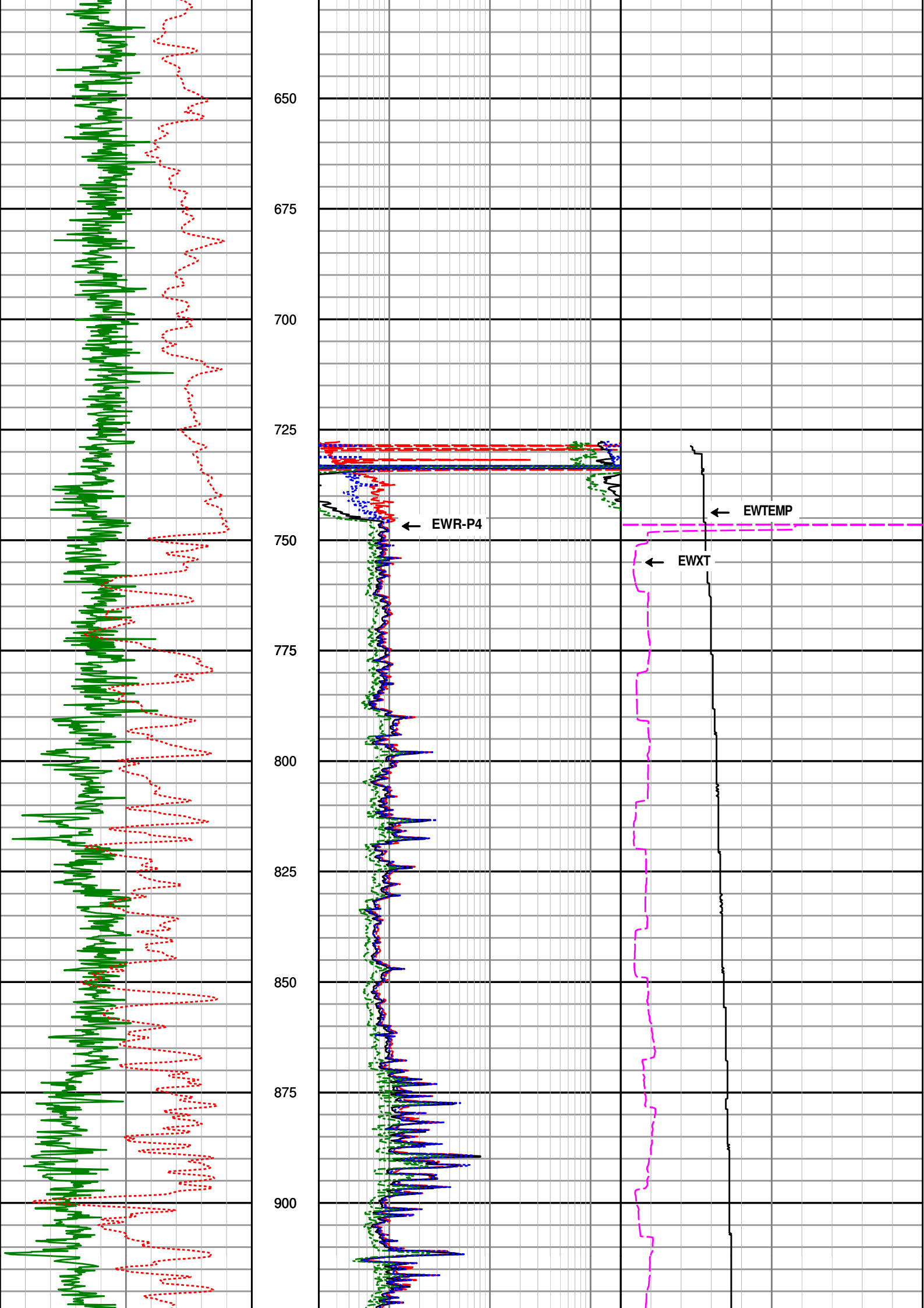
550

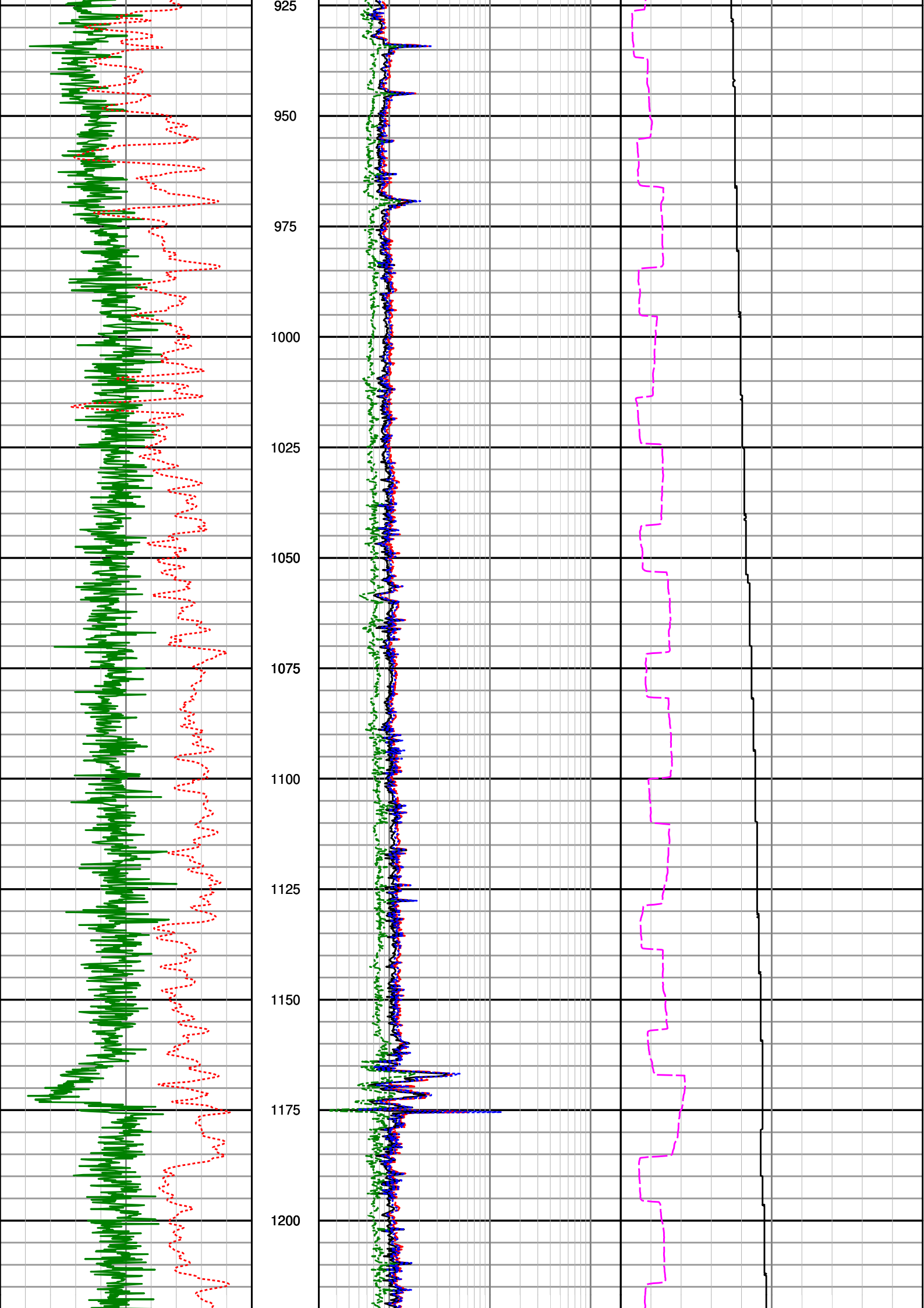
575

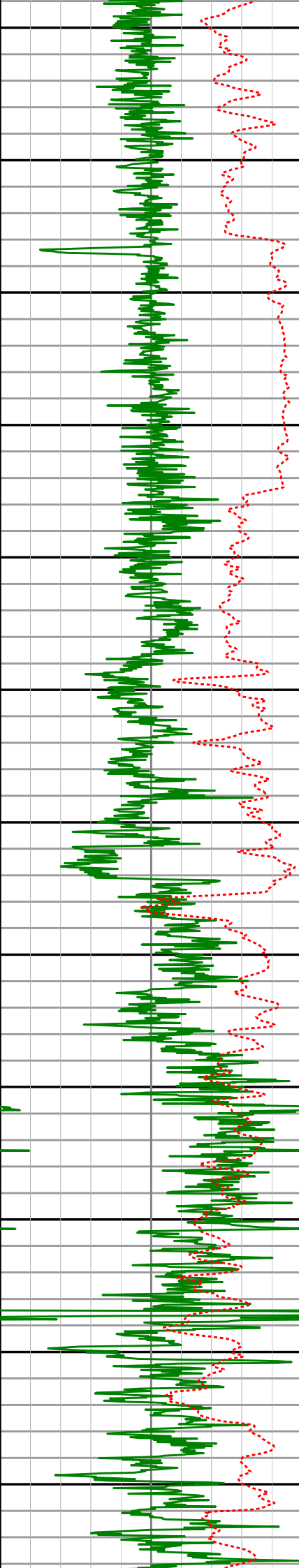
600

625

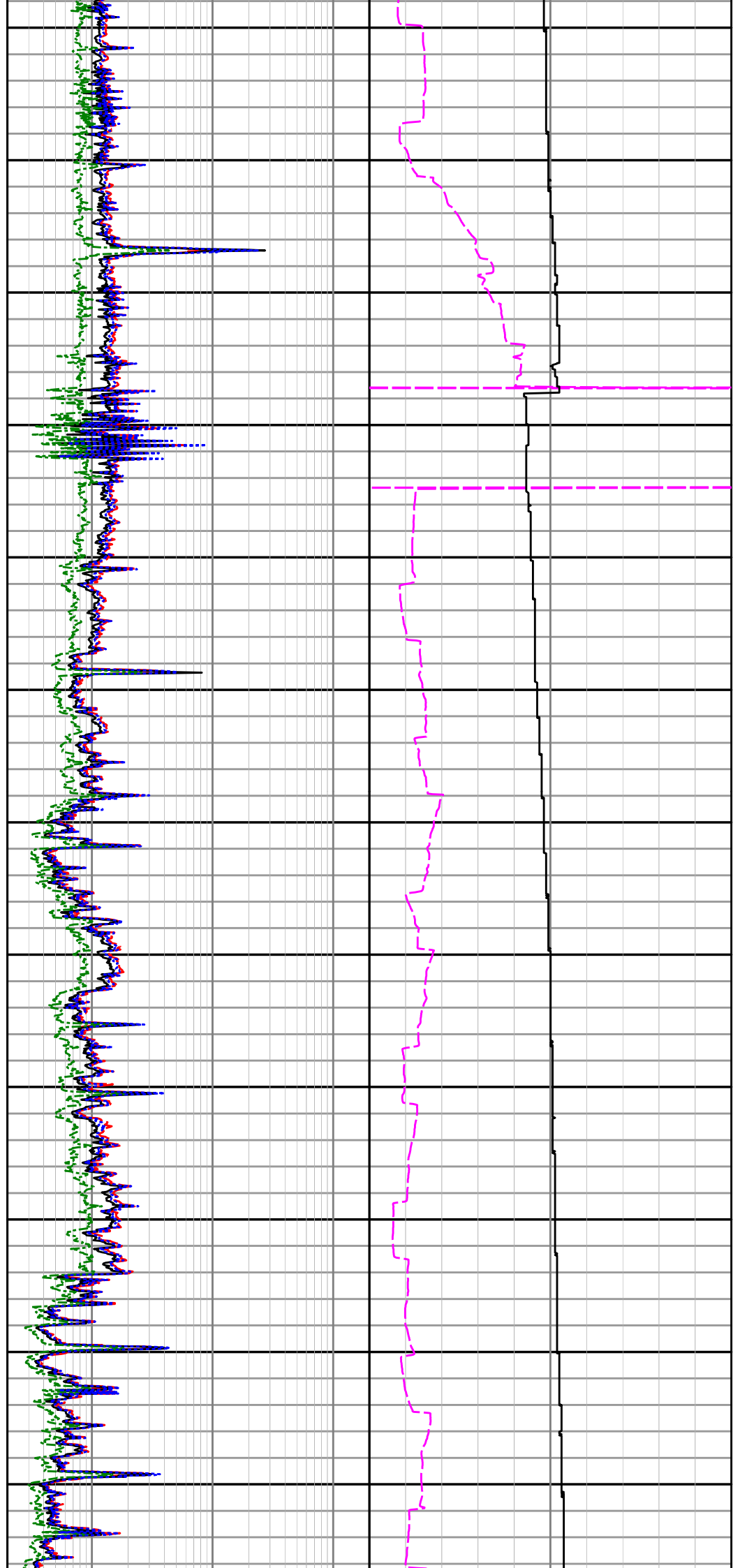


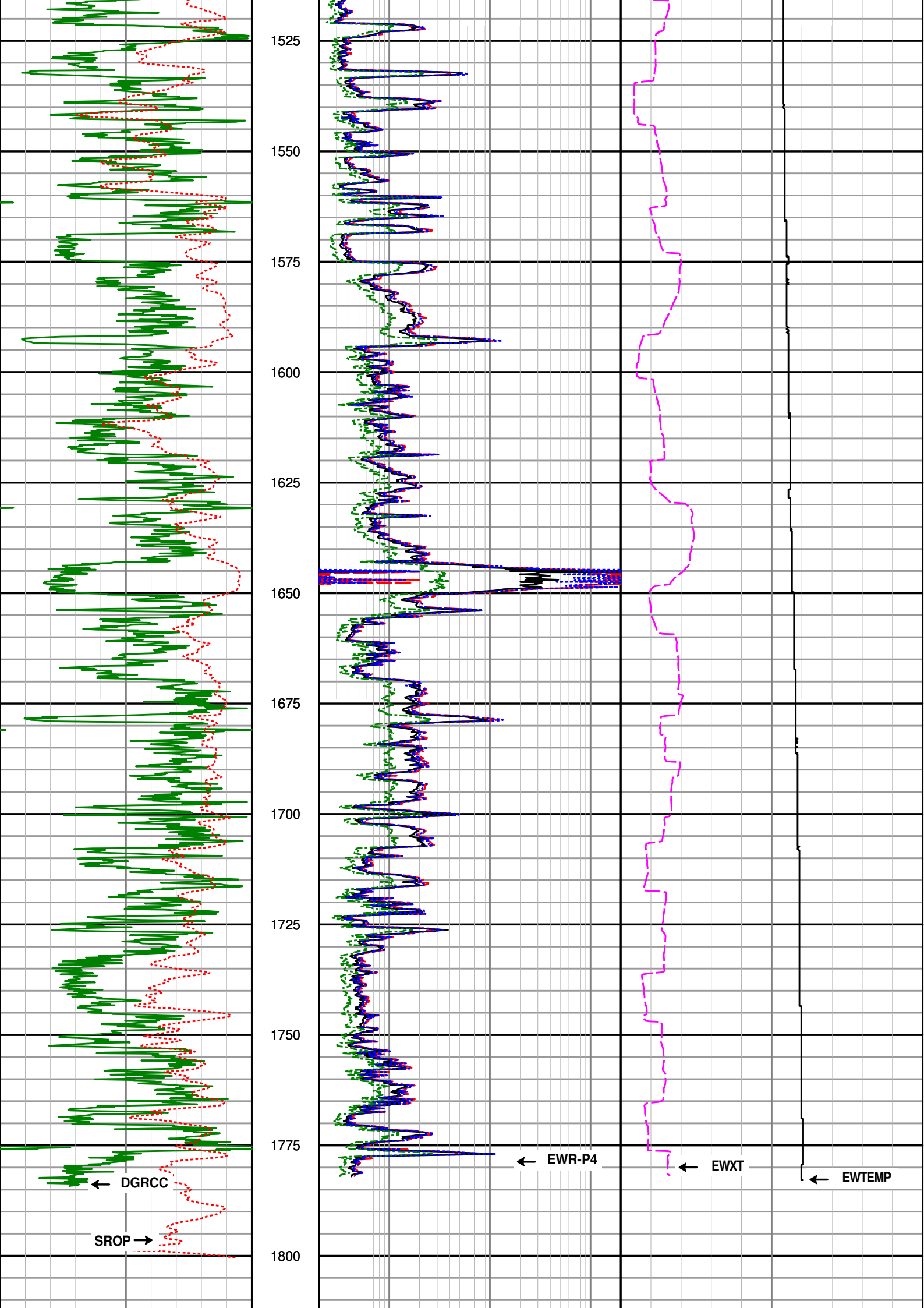






1225
1250
1275
1300
1325
1350
1375
1400
1425
1450
1475
1500





<div> <div>0</div> <div>150</div> </div> <div>Gamma Ray KclBh (DGRCC)</div> <div>api</div>		<div>1025</div> <div>Depth</div> <div>MD</div> <div>1 : 1000</div>	<div> <div>0.2</div> <div>200</div> </div> <div>9in Phase Resistivity (R09P)</div> <div>ohmm</div>		<div> <div>0</div> <div>5</div> </div> <div>Formation Exposure Time (EWXT)</div> <div>hrs</div>	
<div> <div>200</div> <div>0</div> </div> <div>Rate of Penetration (ROPA)</div> <div>m/hr</div>			<div> <div>0.2</div> <div>200</div> </div> <div>15in Phase Resistivity (R15P)</div> <div>ohmm</div>		<div> <div>0</div> <div>100</div> </div> <div>Temperature (EWTEMP)</div> <div>deg C</div>	
			<div> <div>0.2</div> <div>200</div> </div> <div>27in Phase Resistivity (R27P)</div> <div>ohmm</div>			
			<div> <div>0.2</div> <div>200</div> </div> <div>39in Phase Resistivity (R39P)</div> <div>ohmm</div>			