



RESERVAL GAS RATIO LOG



WELL : ROCKHOPPER-1

FROM (m): 0	TO (m): 3570	SCALE: 1/ 500
-------------	--------------	---------------

Country : AUSTRALIA		Latitude : 39 47' 34.1828" S		762mm (30") at (m MDRT) : 157.00		Spud Date : 30-11-2009	
Region : TASMANIA		Longitude : 145 26' 21.4660" E		340mm (13 3/8") at (m MDRT) : 961.00		Total Depth Date : 27-12-2009	
Field : ROCKHOPPER		X (m) : 366376.031		245mm (9 5/8") at (m MDRT) : 1965.00		Total Depth (m MDRT) : 3522.0	
Permit : T/18P		Y (m) : 5594075.423				Total Depth (m TVSS) : 3191.97	
Well Type : EXPLORATION		RT-Sealevel (m MSL) : 26				Status : P & A	
Rig Name : KAN TAN 4		RT-Seabed (m) : 100.3					

GAS RATIOS FORMULAE

GAS WETNESS RATIO (Wh)
GWR = (C2 + C3 + C4 + C5)/ (C1 + C2 + C3 + C4 + C5)*100

LIGHT TO HEAVY RATIO (Bh)
LHR = (C1 + C2)/(C3 + C4 + C5)

OIL CHARACTER QUALIFIER (Ch)
OCQ = (C4 + C5)/(C3)

	Dolomite		Claystone		Argil Siltstone		Calcareous
	Calcirudite		Siltstone		Sandy Siltstone		Dolomitic
	Calcarenite		Sandstone		Calcareous Siltstone		Fossils
	Calcsiltite		Coal		Argil Sandstone		Foraminiferae
	Calclutite		Intrusive Volcanics		Calcareous Sandstone		Carbonaceous
	Sandy Claystone		Volcaniclastics		Dolomitic Sandstone		Chert
	Silty Claystone		Tuff		Silty Sandstone		Pyrite
	Calcareous Claystone		Cement				Glauconite
	Argil Calclutite						Mica

GEOSERVICES CREW

ALS ENGINEERS

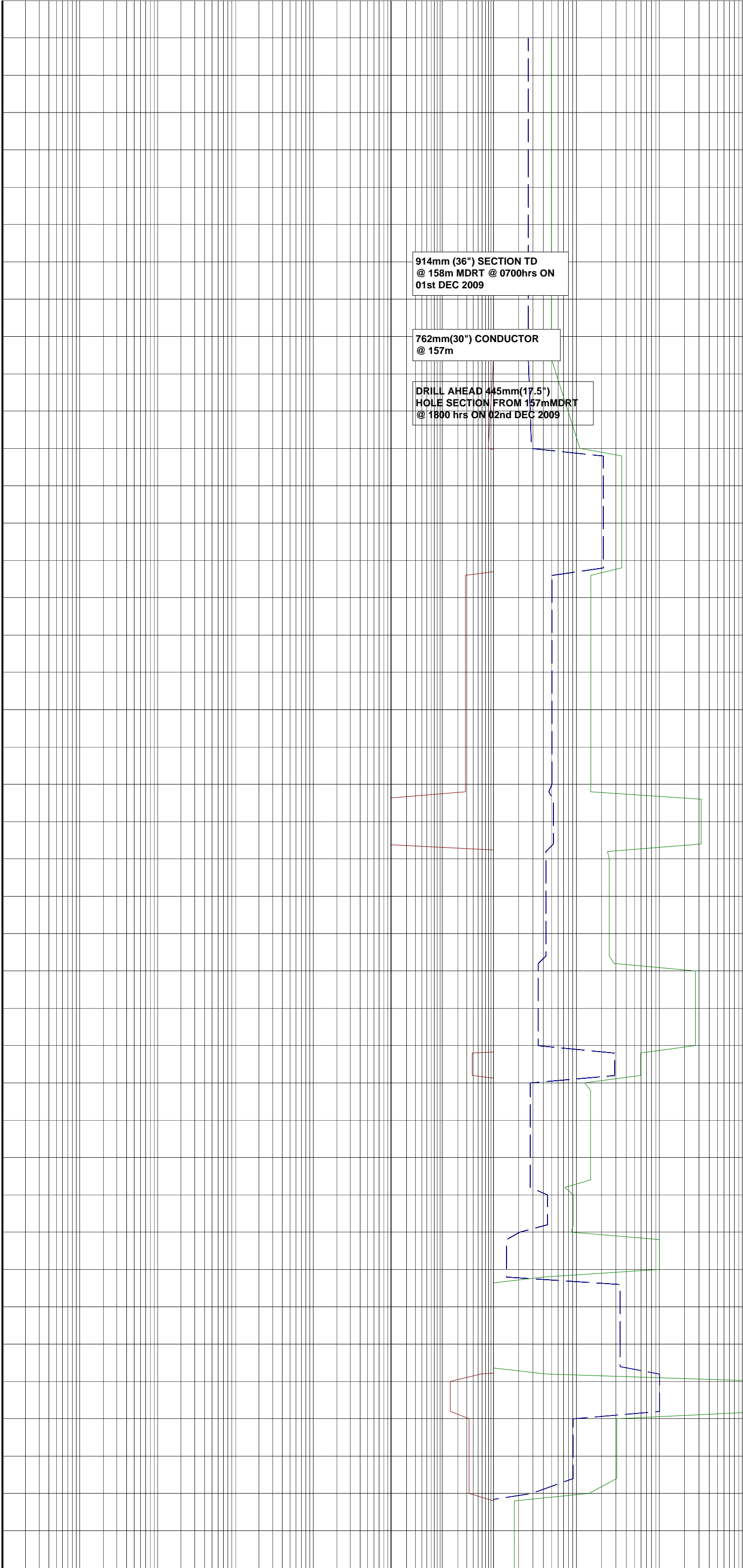
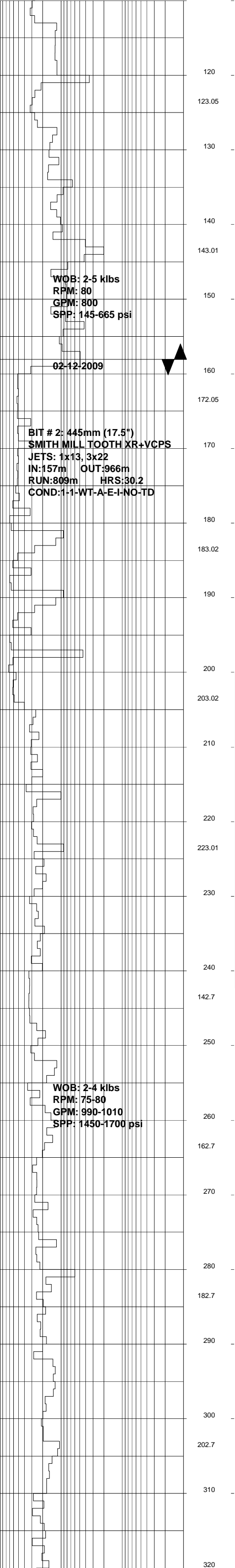
G. Gopi
L. Hannon
D.Ilyin

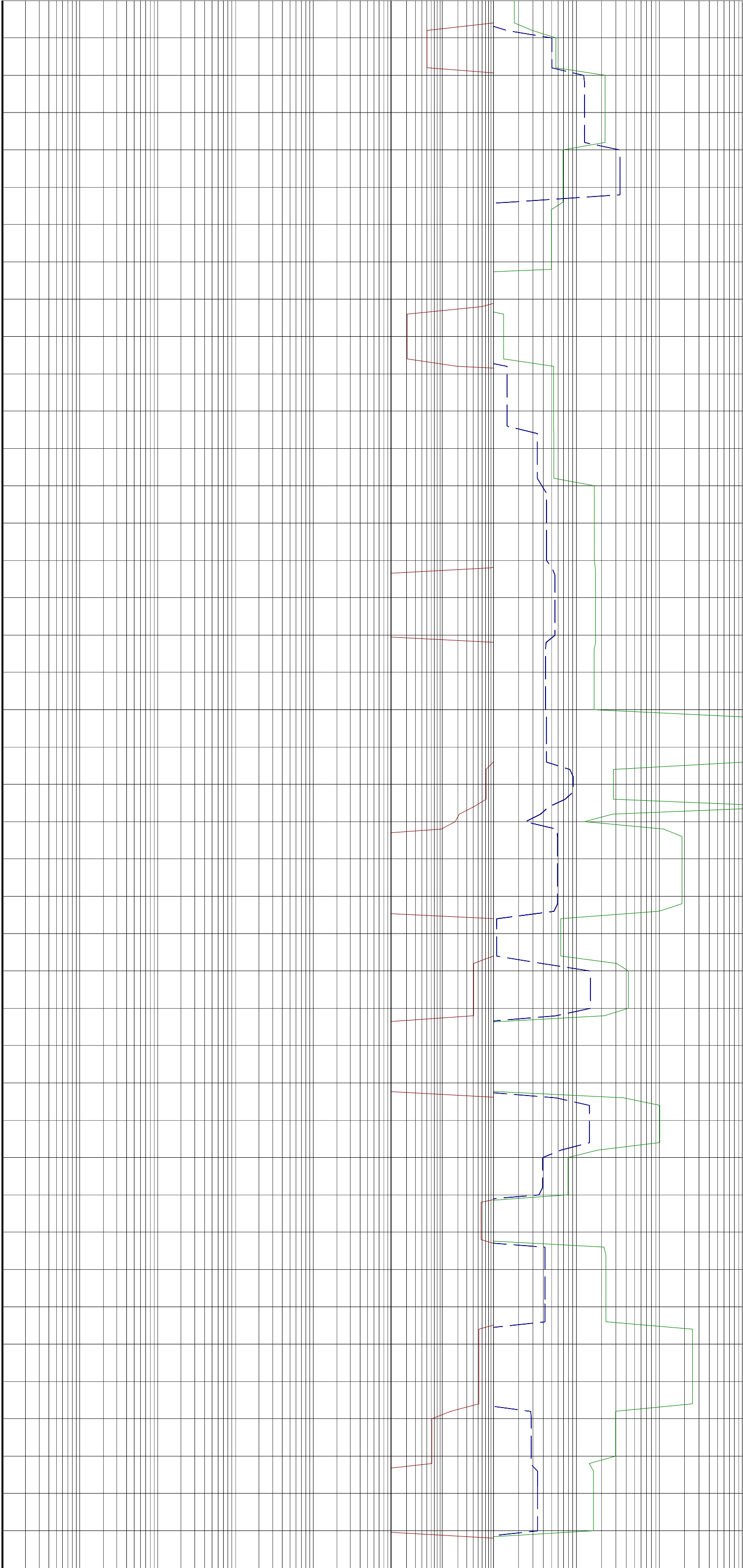
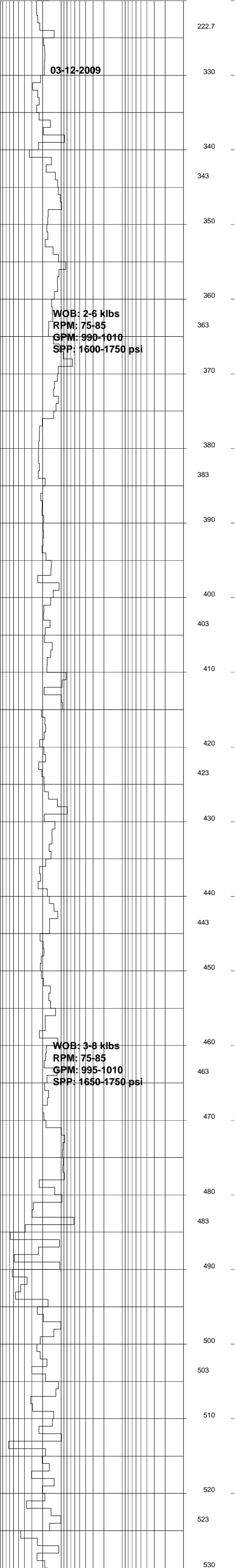
MUDLOGGERS

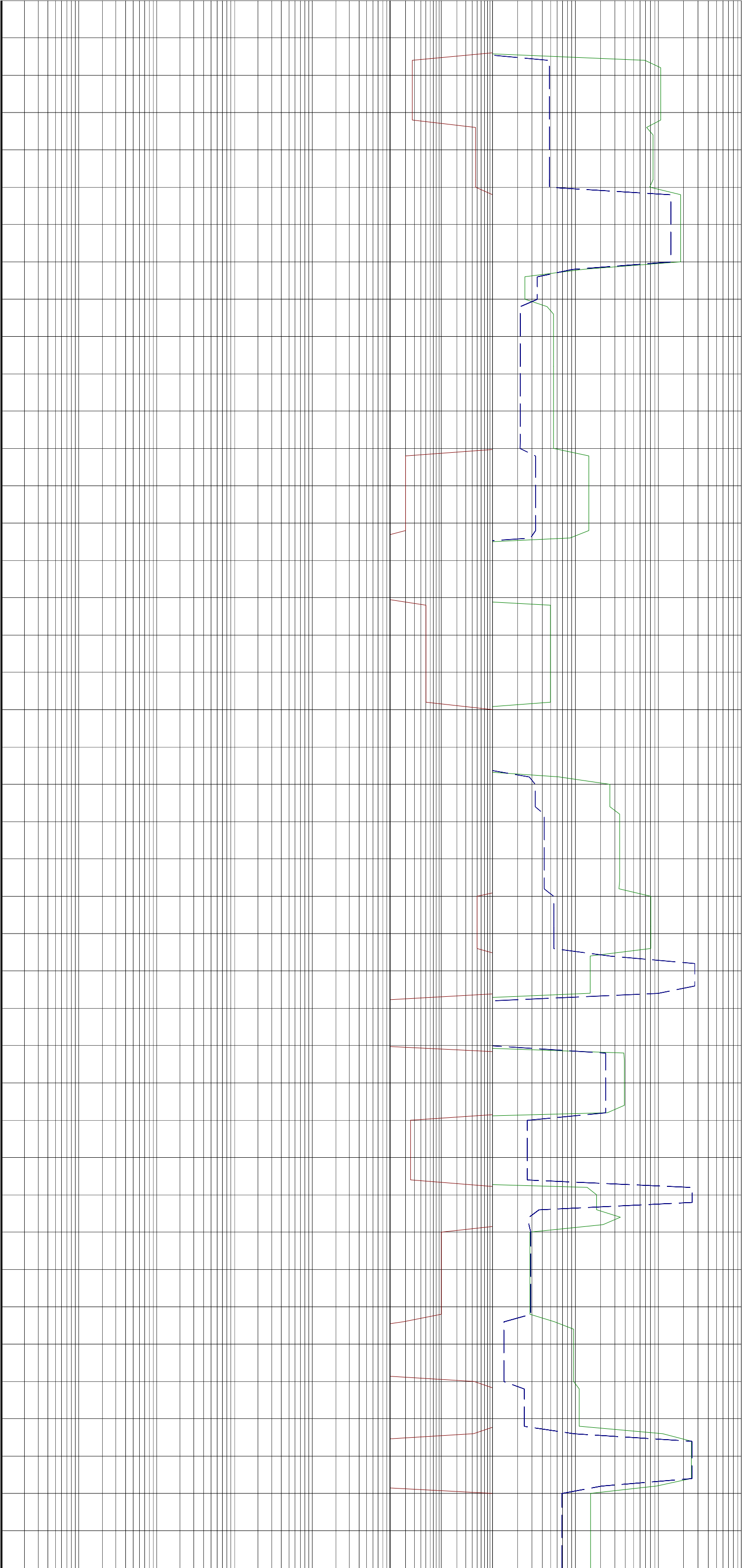
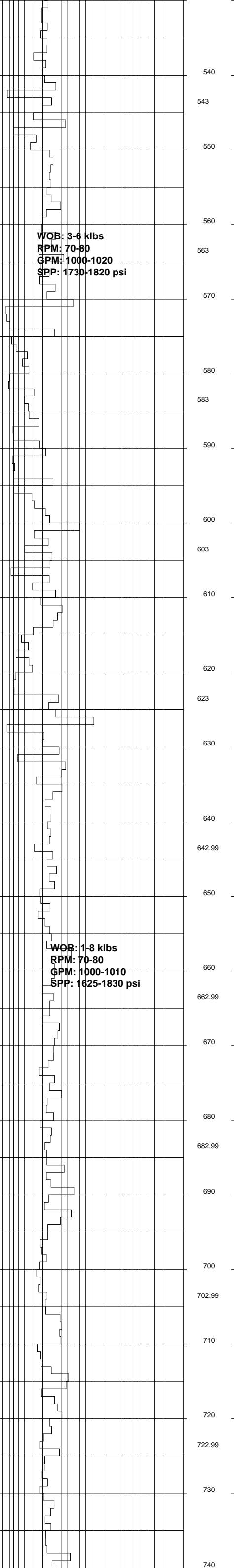
P. Currie
K.Brzozowska

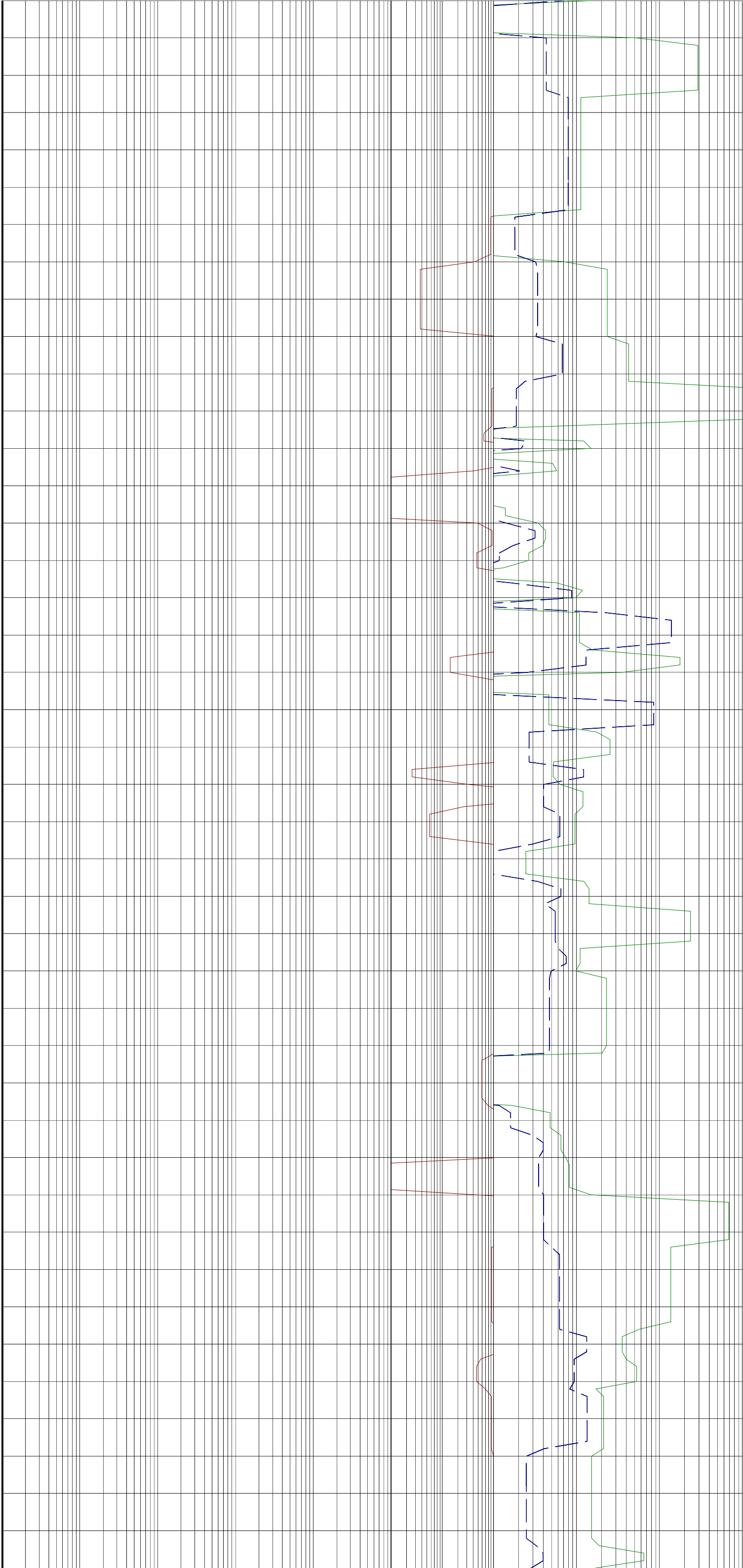
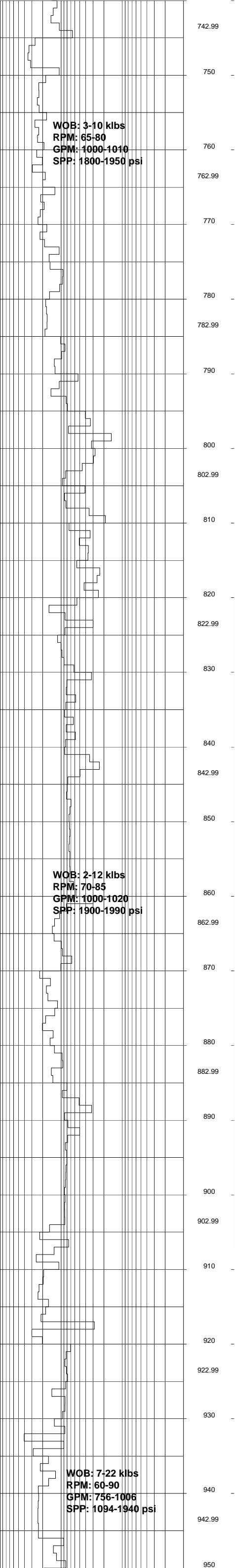
DEPTH mMDRT

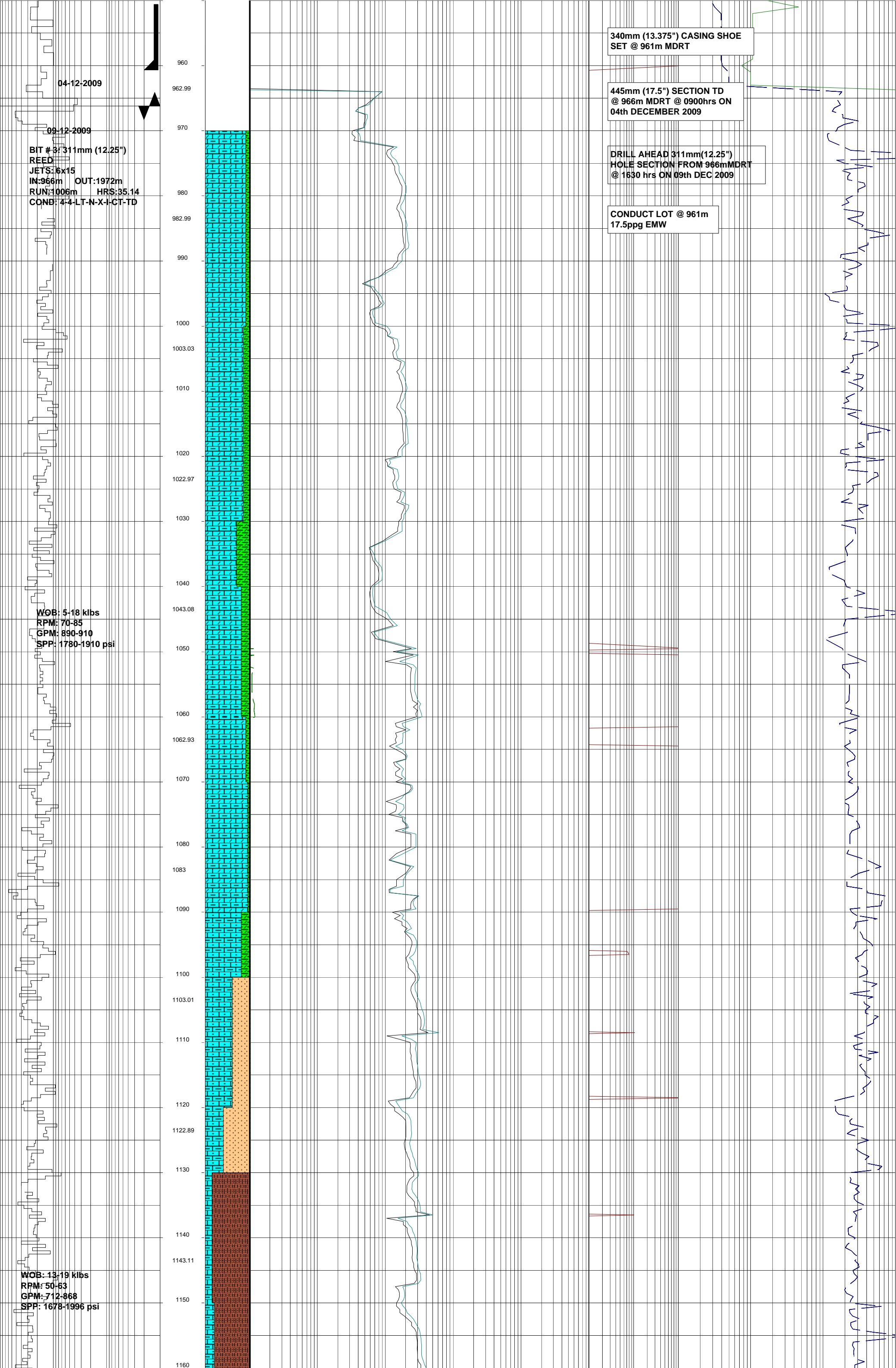


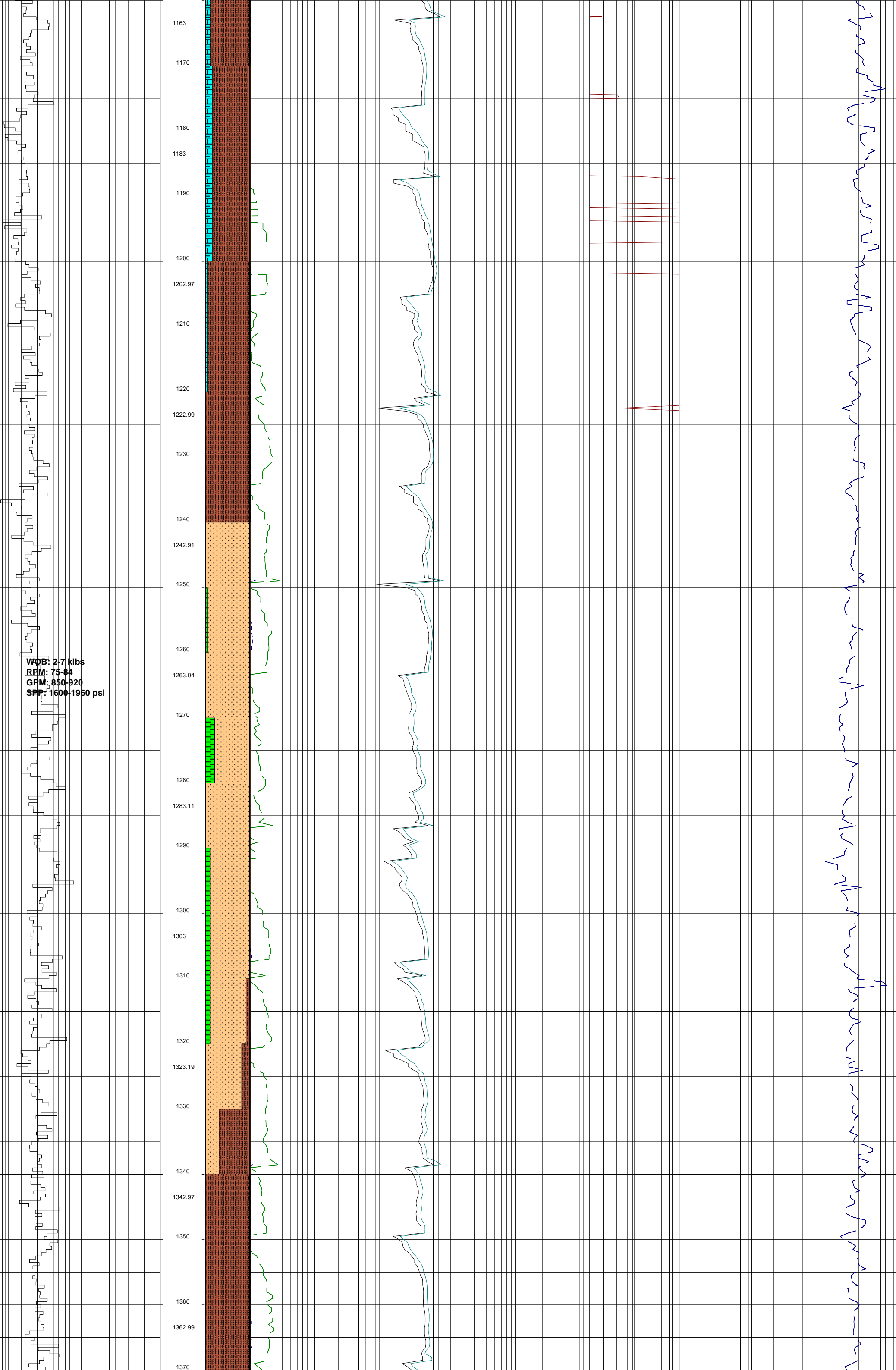


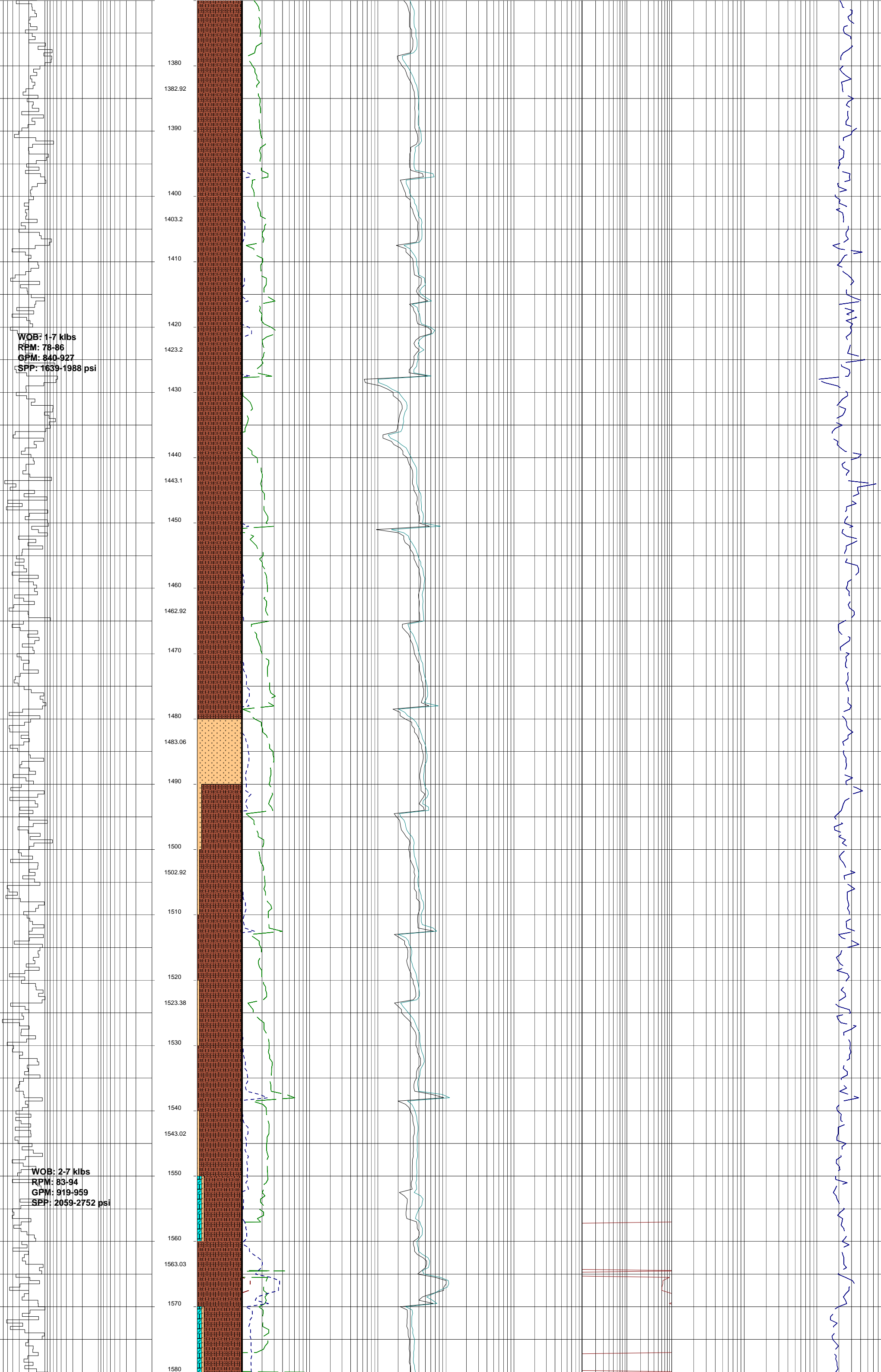


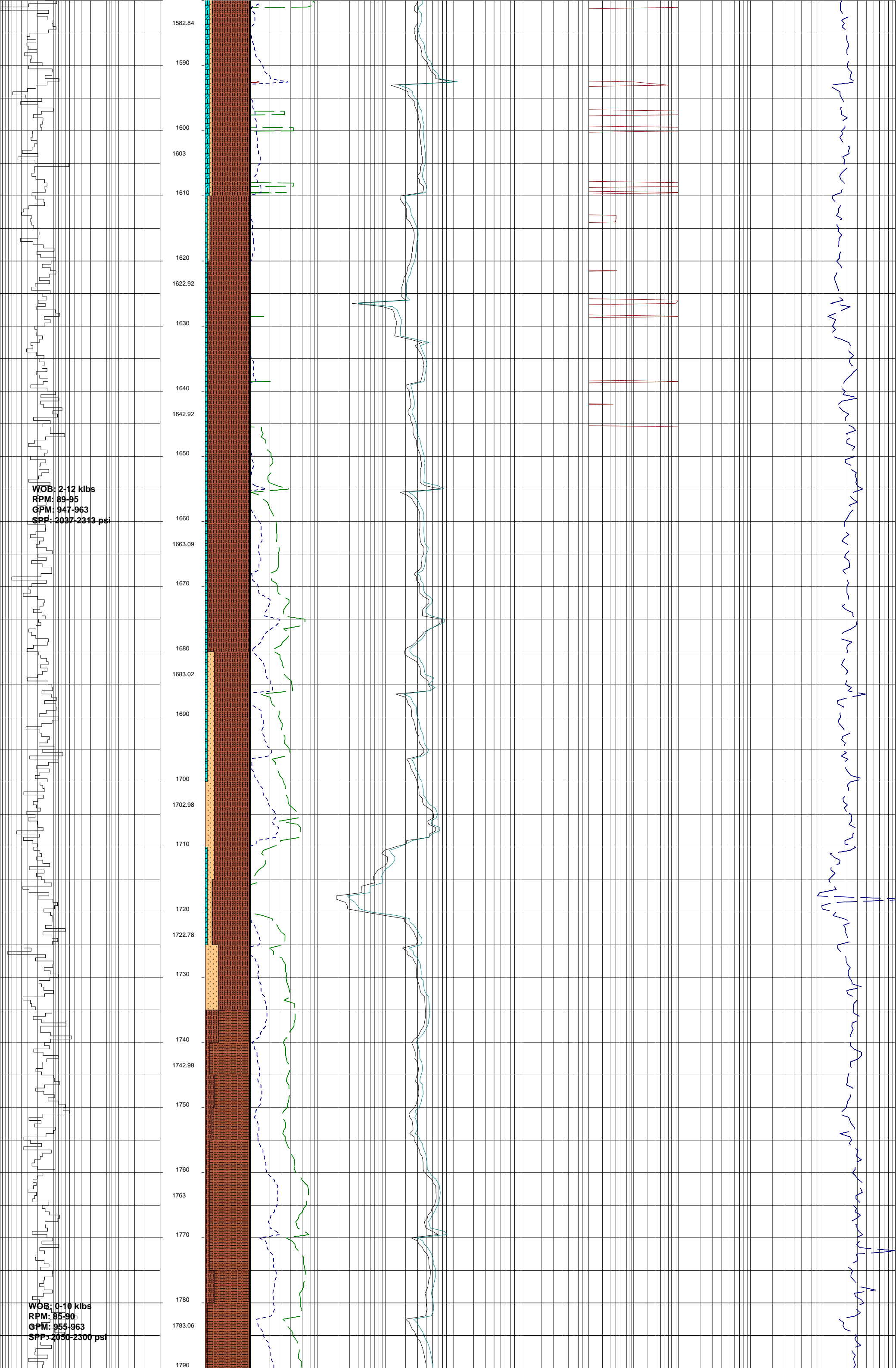


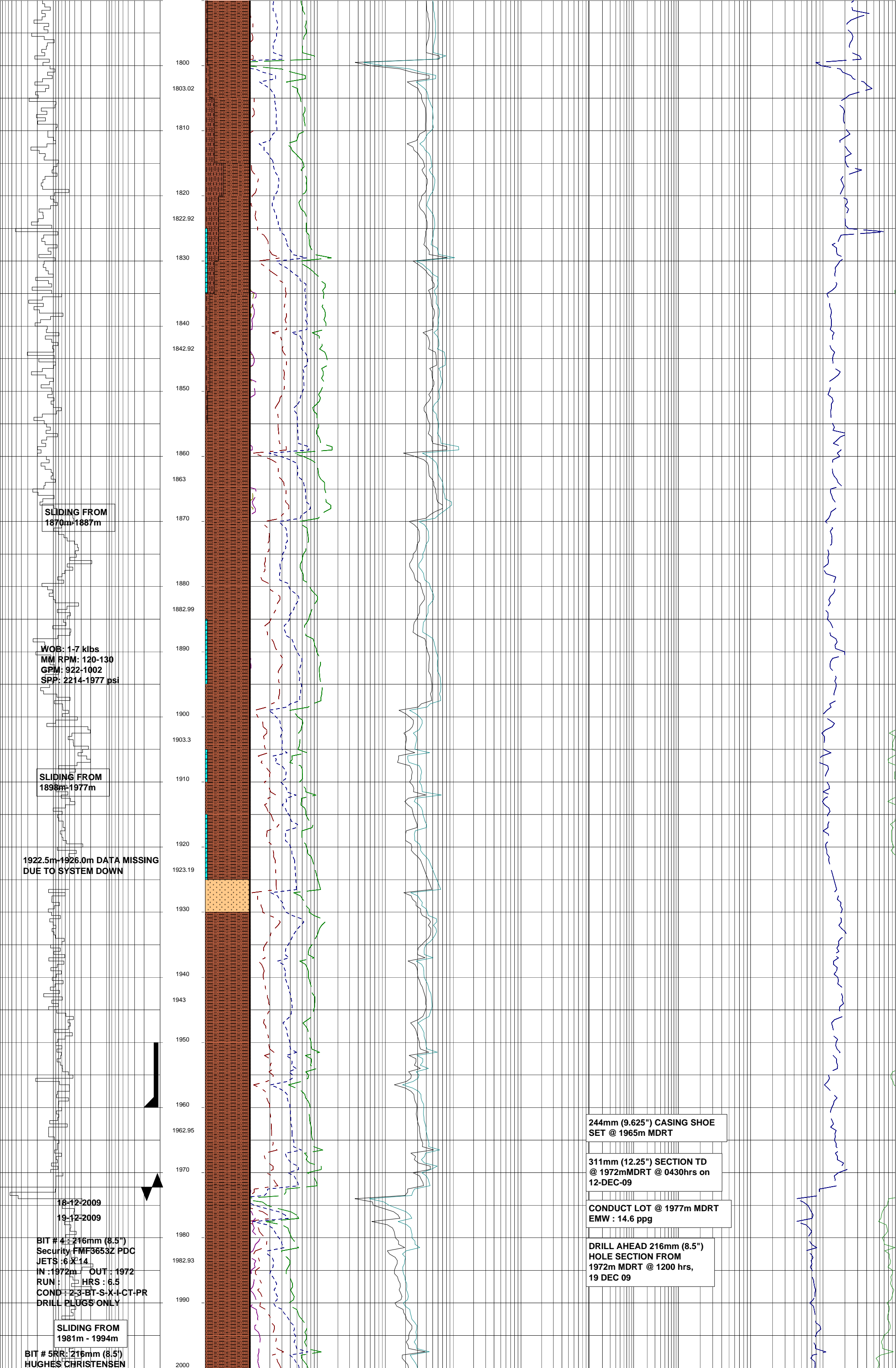












JETS: 3X20
IN: 1972m OUT: 2019
RUN: 47m HRS: 4.7
COND: 2-2-WT-A-1-NO-BHA

20-12-2009

21-12-2009

BIT # 6: 216mm 98.5")
REED
JETS: 4 X 16
IN: 2019 OUT: 2023m
RUN: 4m HRS: 0.3hrs
COND: 0-0-NO-A-X-I-NO-DTF

BIT # 6RR1: 216mm 98.5")
REED
JETS: 4 X 16
IN: 2023m OUT: 3522m
RUN: 1499m HRS: 89.4
COND: 6-6-BT-A-X-I-NO-PR

WOB: 2.7-21.0 klbs
RPM: 64-126
GPM: 453-569
SPP: 1350-1870 psi

WOB: 6-15 klbs
RPM: 80-135
GPM: 525-560
SPP: 1591-1770 psi

