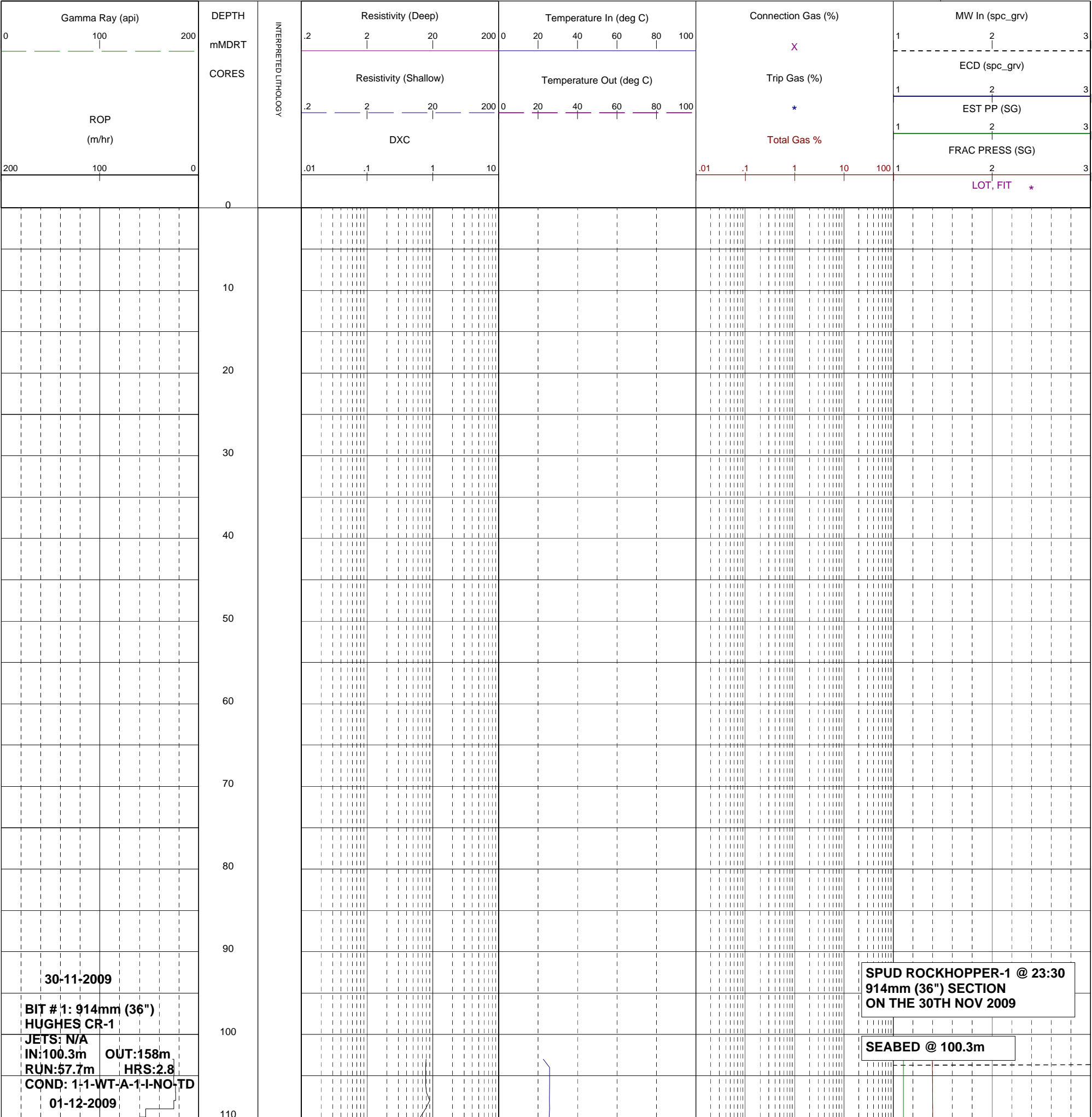
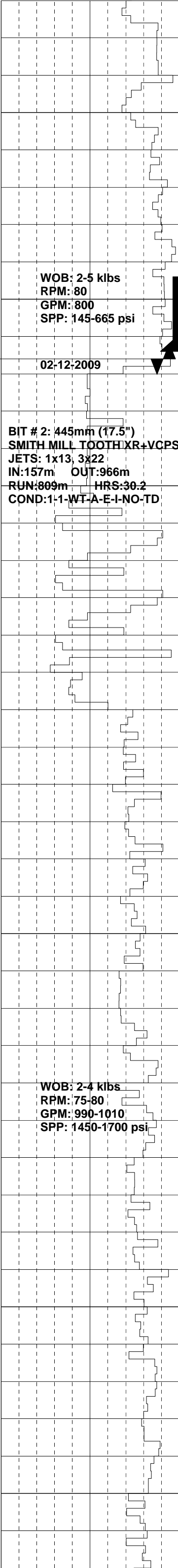




SCALE: 1/ 500

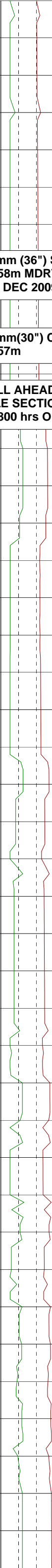


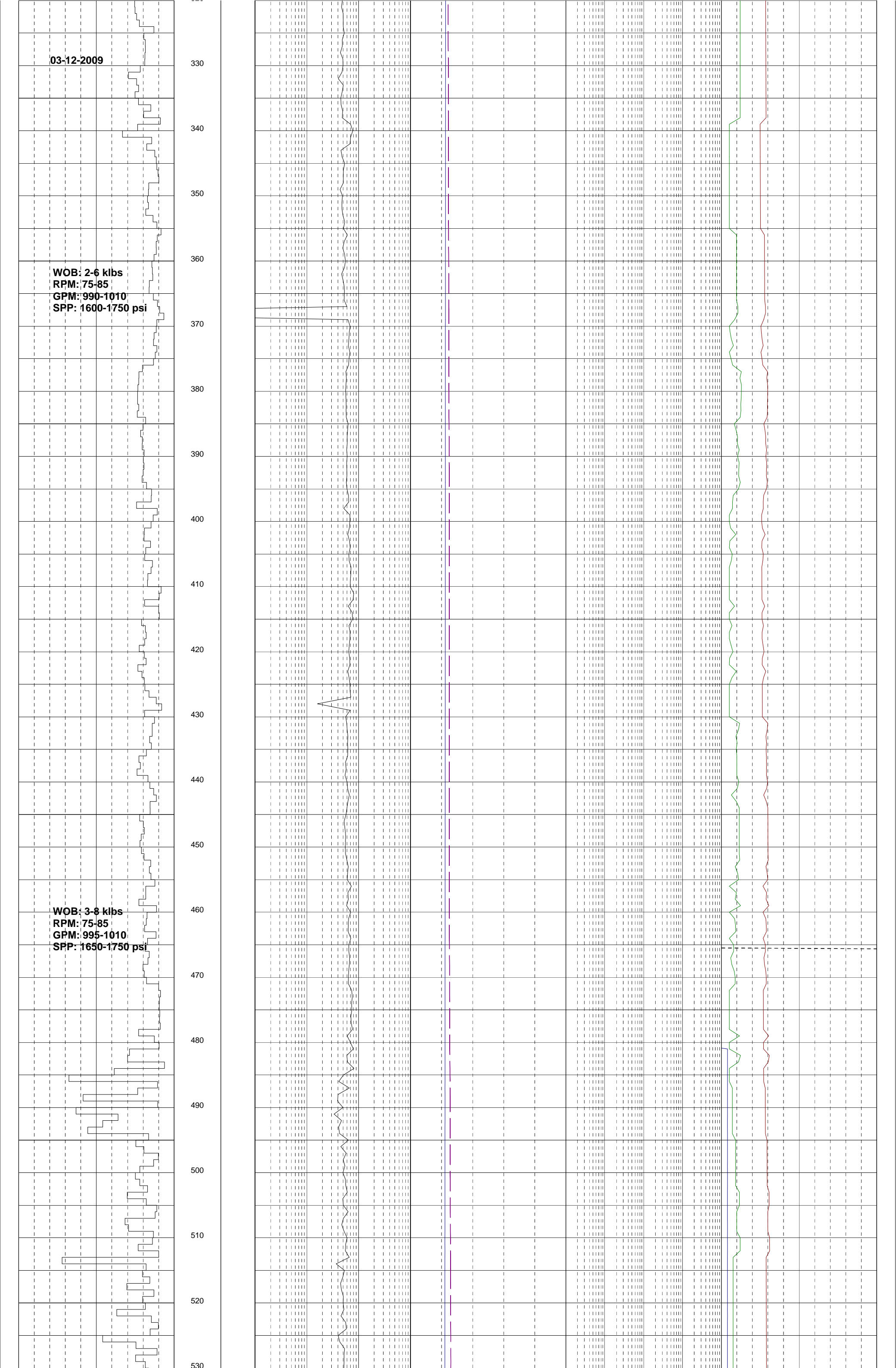


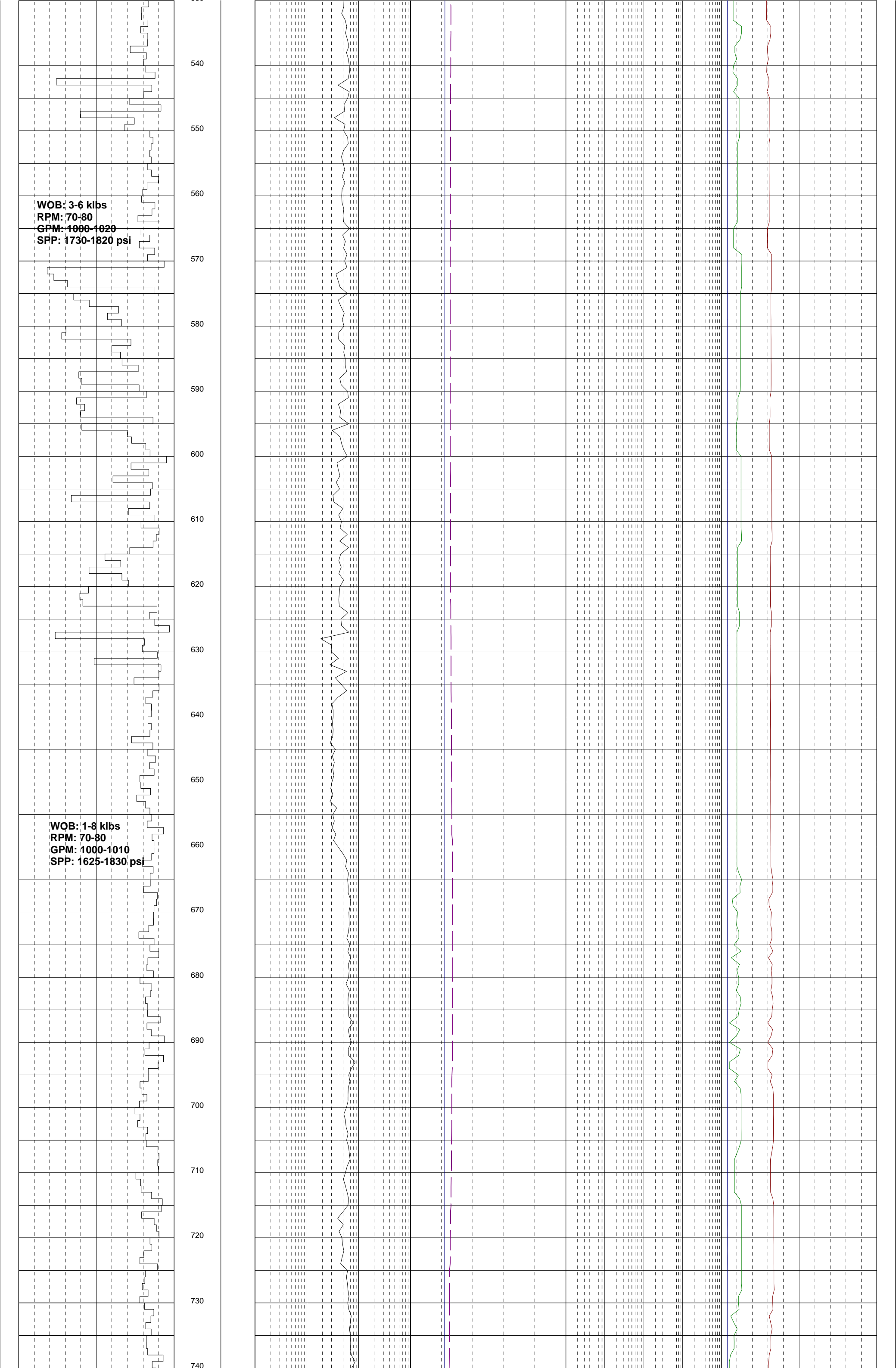
914mm (36") SECTION TD
@ 158m MDRT @ 0700hrs ON
01st DEC 2009

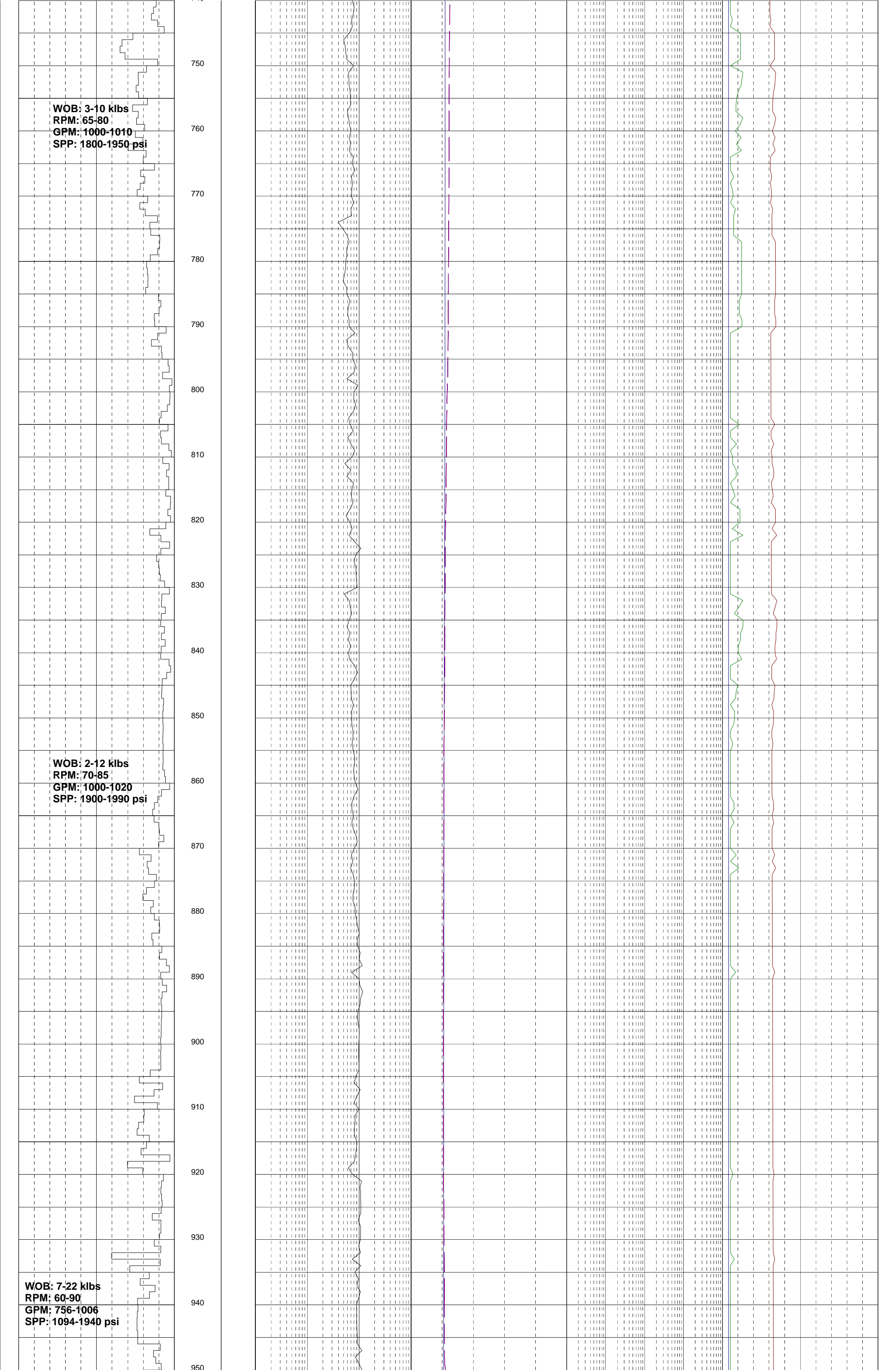
762mm(30") CONDUCTOR
@ 157m

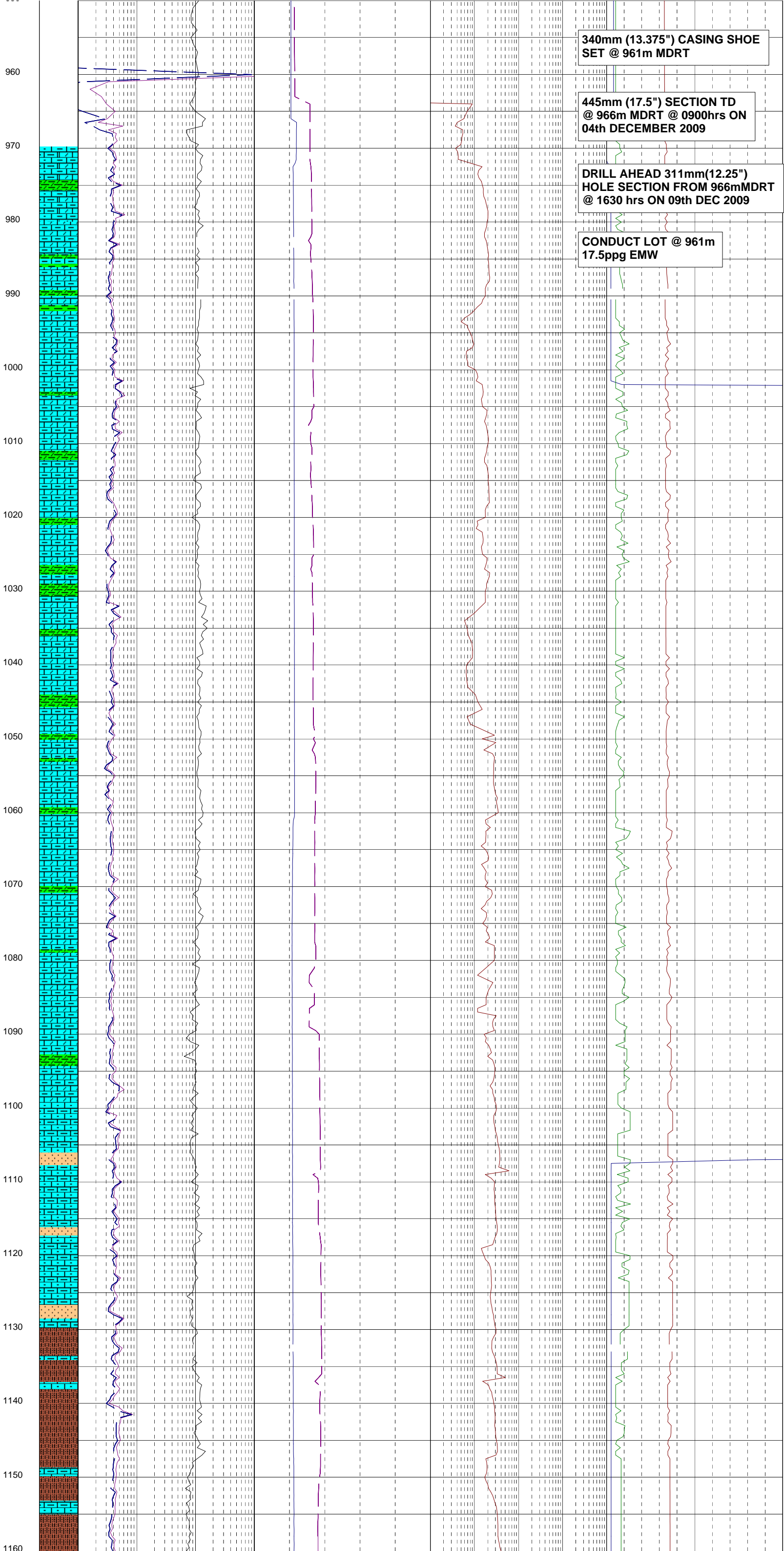
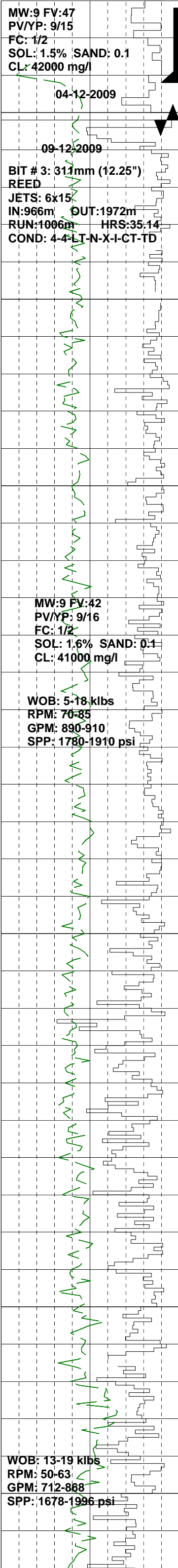
DRILL AHEAD 445mm(17.5")
HOLE SECTION FROM 157mMDRT
@ 1800 hrs ON 02nd DEC 2009

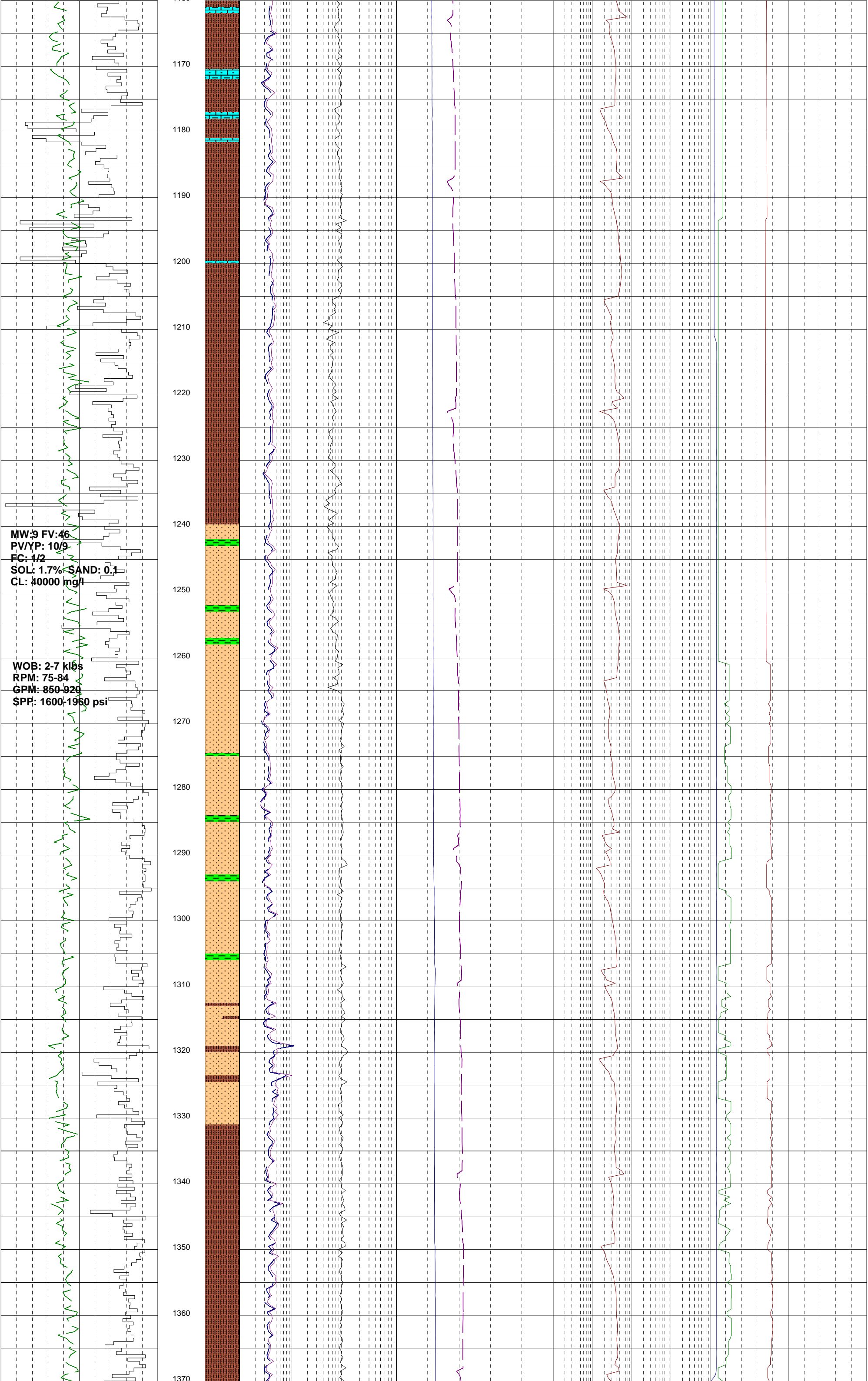


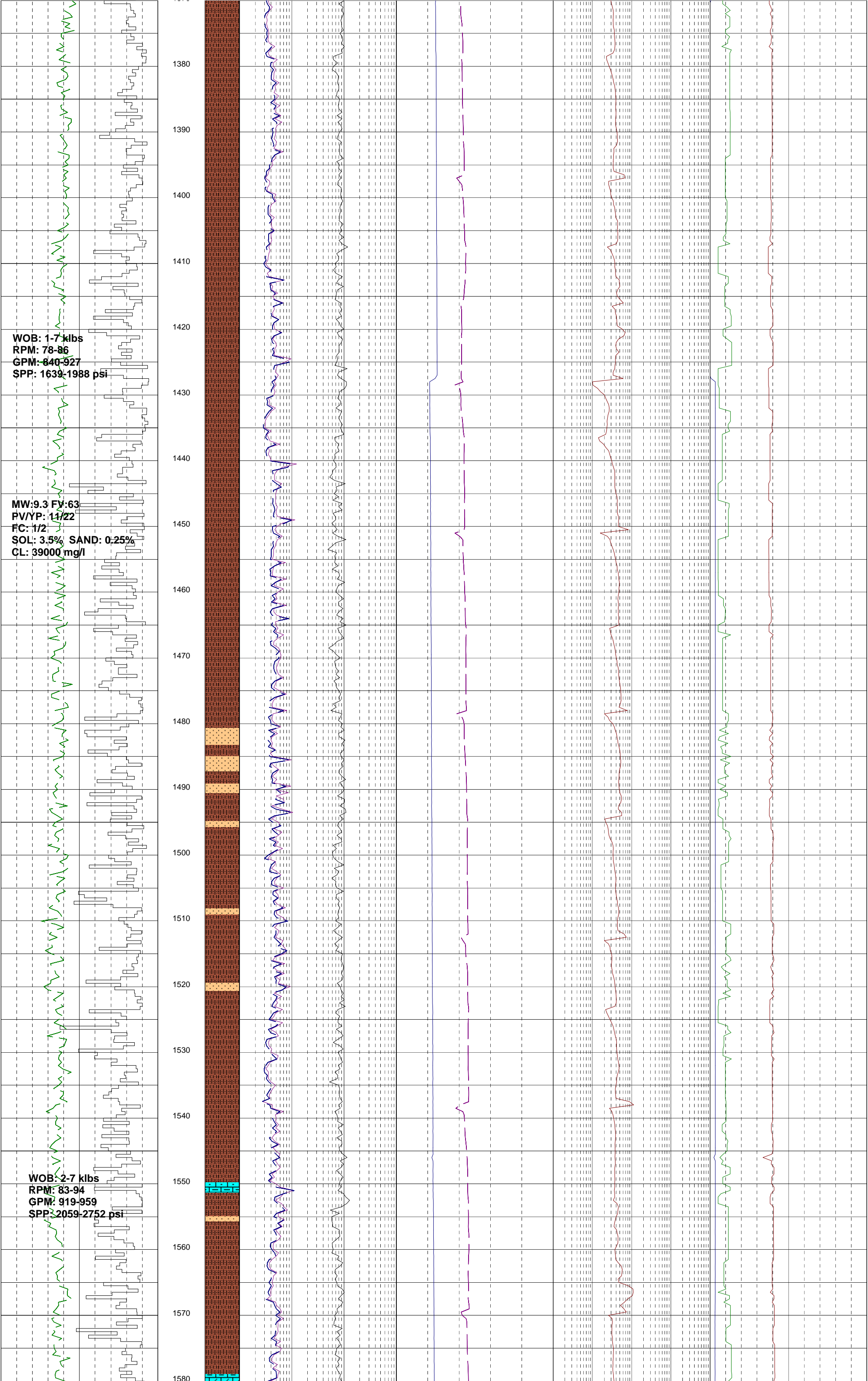


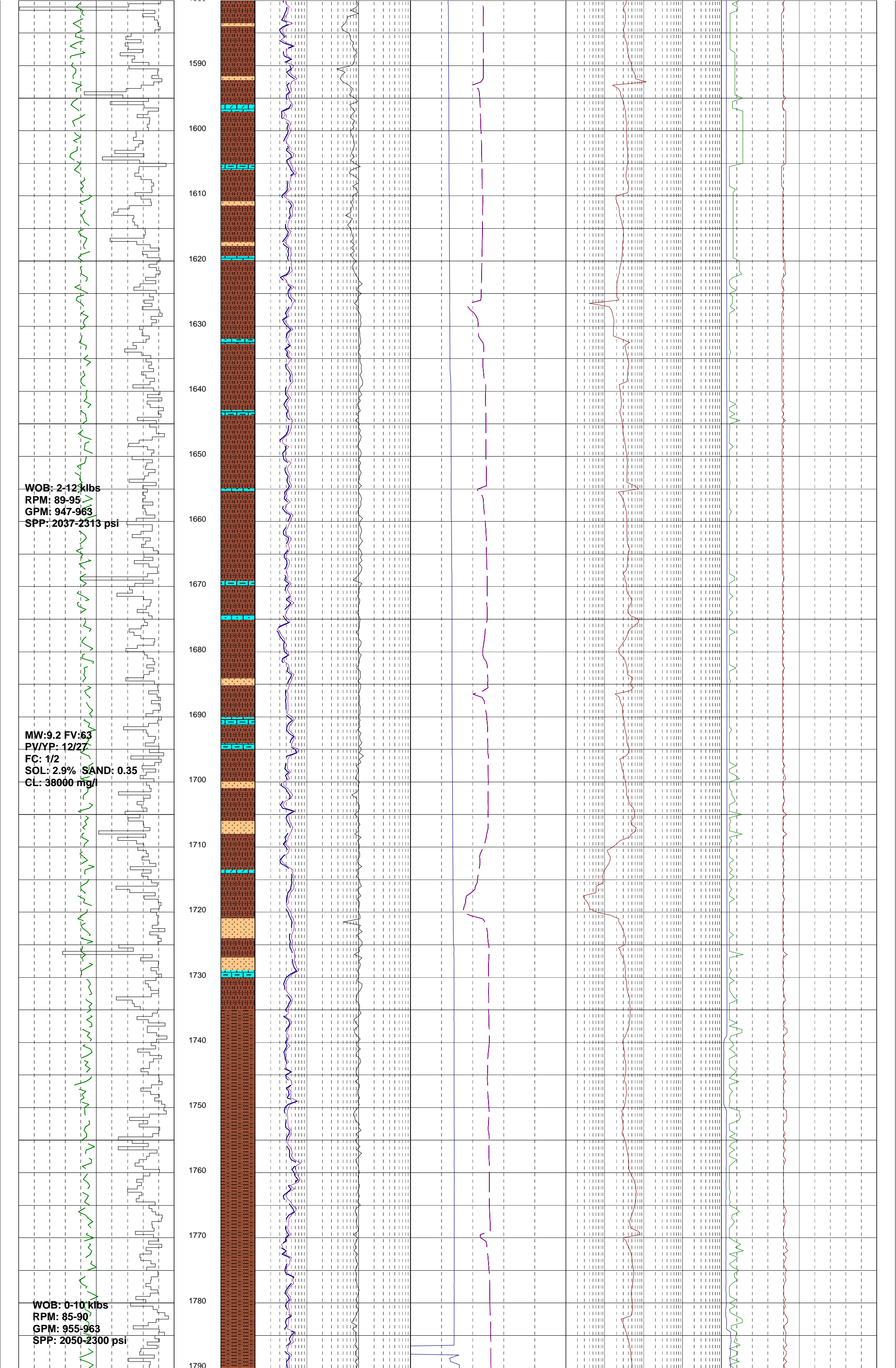


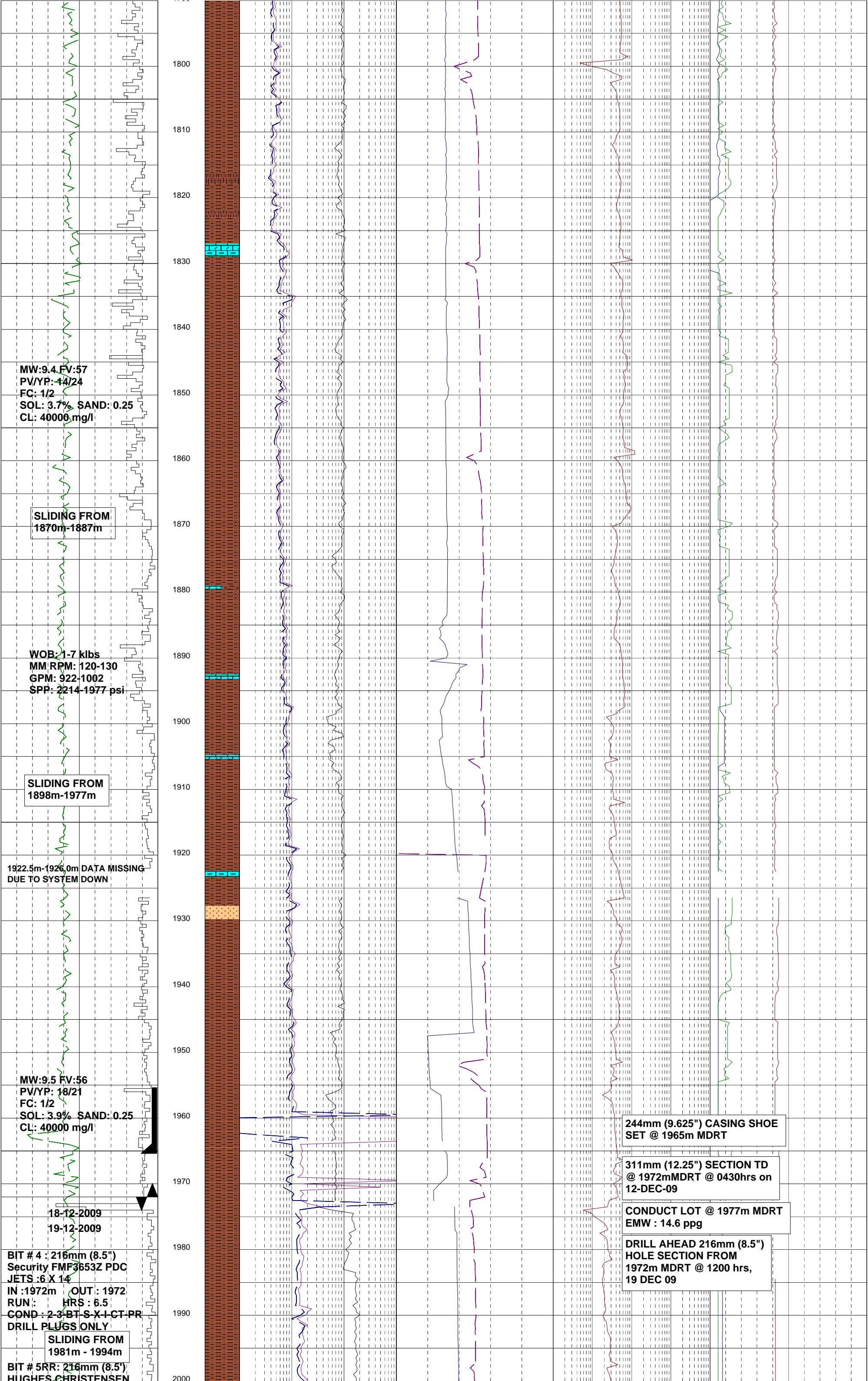












MW: 9.4 FV: 57
PV/YP: 44/24
FC: 1/2
SOL: 3.7% SAND: 0.25
CL: 40000 mg/l

SLIDING FROM
1870m-1887m

WOB: 1-7 klbs
MM RPM: 120-130
GPM: 922-1002
SPR: 2214-1977 psi

SLIDING FROM
1898m-1977m

1922.5m-1926.0m DATA MISSING
DUE TO SYSTEM DOWN

MW: 9.5 FV: 56
PV/YP: 18/21
FC: 1/2
SOL: 3.9% SAND: 0.25
CL: 40000 mg/l

244mm (9.625") CASING SHOE
SET @ 1965m MDRT

311mm (12.25") SECTION TD
@ 1972mMDRT @ 0430hrs on
12-DEC-09

CONDUCT LOT @ 1977m MDRT
EMW : 14.6 ppg

DRILL AHEAD 216mm (8.5")
HOLE SECTION FROM
1972m MDRT @ 1200 hrs,
19 DEC 09

18-12-2009
19-12-2009

BIT # 4 : 216mm (8.5")
Security FMP3653Z PDC
JETS : 6 X 14
IN : 1972m OUT : 1972
RUN : HRS : 6.5
COND : 2-3-BT-S-X-I-CT-PR
DRILL PLUGS ONLY

SLIDING FROM
1981m - 1994m

BIT # 5RR: 216mm (8.5")
HUGHES CHRISTENSEN

