

388250 mE

388750 mE

5393750 mN

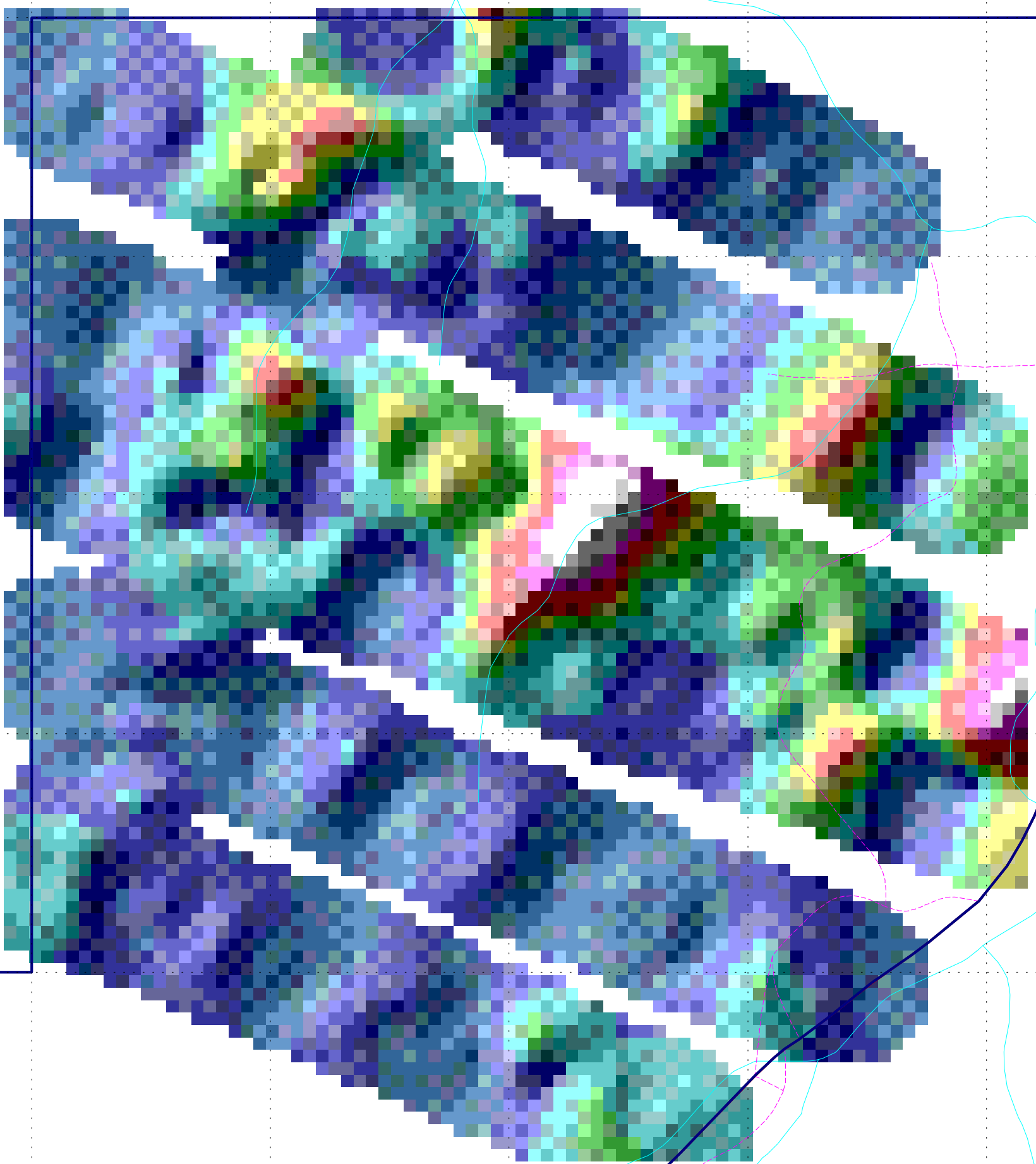
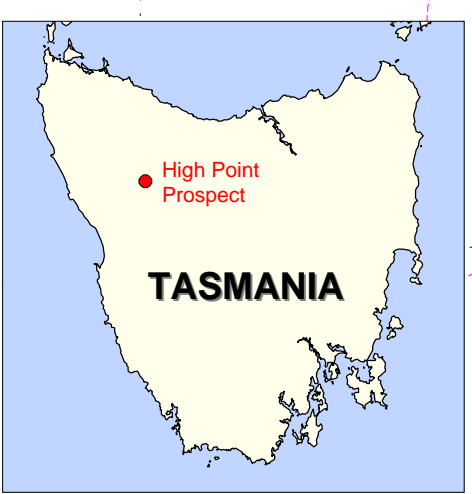
5393250 mN

5392750 mN

5392250 mN

EL 37/89

EL 10/98



Pasminco Exploration	
Fig: 8	TASMANIA
Date: 1/8/2000	EL 37/89 Bulgobac Hill
Author: A. McNeill	High Point Prospect
GIS: 00_115	Raw Ba data - gridded
Drawing: KLS	
Scale: 1:5000	Projection: AMG Zone 55 (AGD 66)