

OLGA

1:100,000

Bulk Gold  
Stream Sediments

929143

OLGA

5 280 000 mN

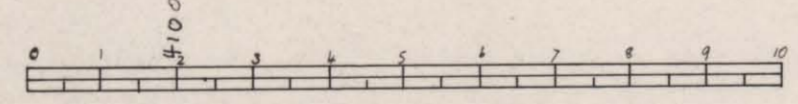
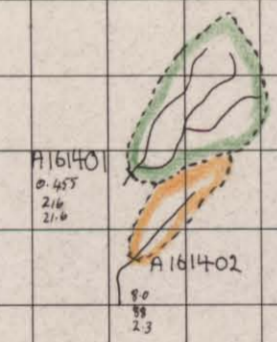
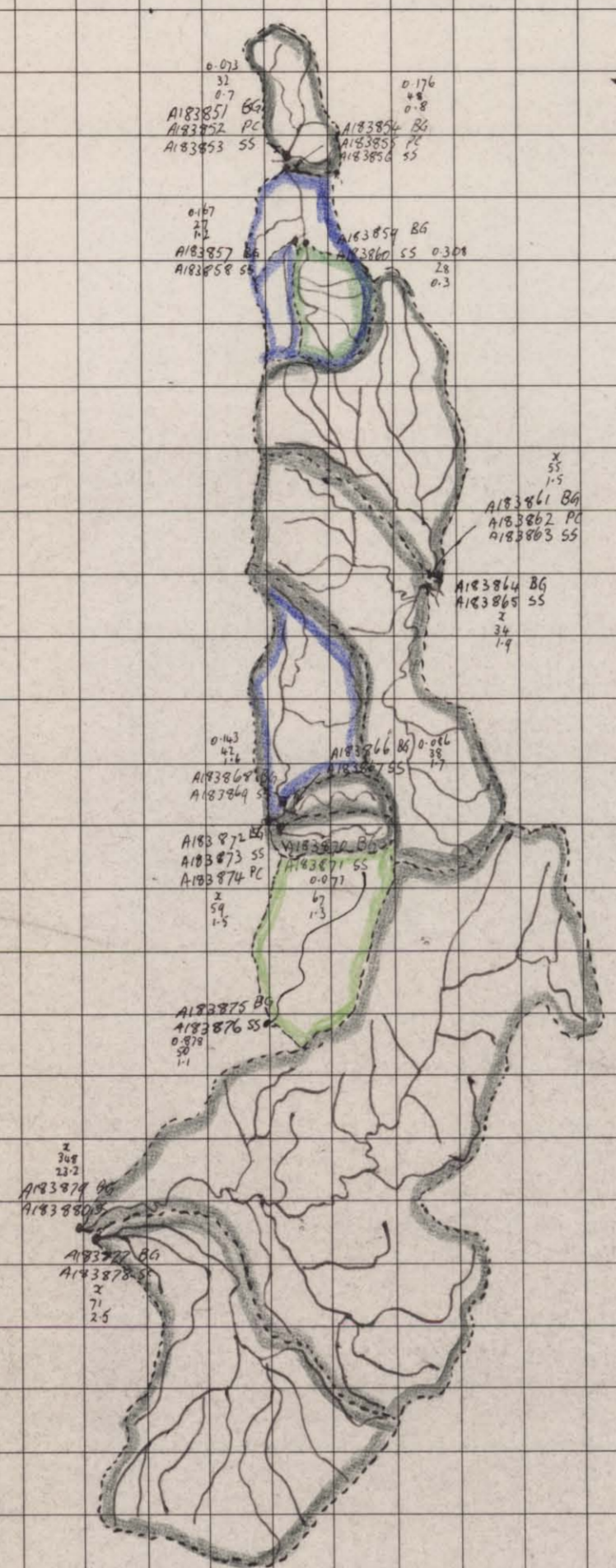
5 250 000

5 270 000

5 260 000

5 250 000

5 240 000 mN

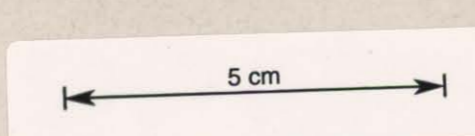


- 20-1
- 0-1-0-2
- 0-2-0-5
- 0-5-1-10
- 1-10-5-10
- 5-10-10
- 10-50
- 50-100
- 100-500
- 500-1000
- >1000

CASE S0011 7913	FILENAME S013	NAME S113
SPREAD 7912	OLGA S012	INSTR S112
FORM DATE S011	OLGA RIVER	S111

STREAM SEDIMENT

	Cu	Pb	Zn	As	Hg	Sb	Al	Sn	W	Ag	Au	Mo	Hg
A18353	2	4	2	6	20	8	5	5	5	5	5	5	5
856	10	4	6	6	120	6	6	6	6	6	6	6	6
857	2	4	10	4	145	6	6	6	6	6	6	6	6
858	2	4	10	4	65	6	6	6	6	6	6	6	6
859	2	4	10	4	140	6	6	6	6	6	6	6	6
860	2	4	10	4	120	6	6	6	6	6	6	6	6
861	2	4	10	4	140	6	6	6	6	6	6	6	6
862	2	4	10	4	120	6	6	6	6	6	6	6	6
863	2	4	10	4	140	6	6	6	6	6	6	6	6
864	2	4	10	4	120	6	6	6	6	6	6	6	6
865	2	4	10	4	140	6	6	6	6	6	6	6	6
866	2	4	10	4	120	6	6	6	6	6	6	6	6
867	2	4	10	4	140	6	6	6	6	6	6	6	6
868	2	4	10	4	120	6	6	6	6	6	6	6	6
869	2	4	10	4	140	6	6	6	6	6	6	6	6
870	2	4	10	4	120	6	6	6	6	6	6	6	6
871	2	4	10	4	140	6	6	6	6	6	6	6	6
872	2	4	10	4	120	6	6	6	6	6	6	6	6
873	2	4	10	4	140	6	6	6	6	6	6	6	6
874	2	4	10	4	120	6	6	6	6	6	6	6	6
875	2	4	10	4	140	6	6	6	6	6	6	6	6



02\_4819  
Tasmania - Regional Bulk Sampling - Inter-Office  
Memorandum  
CSR Limited  
Ellis, P.D.

**CSR LIMITED - AMCD**

OLGA

SCALE	1:100000
DRAWN	P.D.E.
DATE	2/1/88

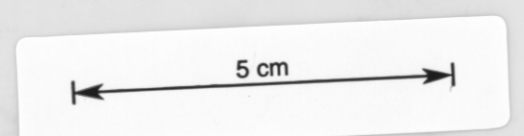
929144

PIEMAN



STREAM SEDIMENT

Sample No.	Cu	Pb	Zn	Bi	Ni	Ba	Sl	As	Sa	W	Ag	Hg	Mn	Mo	Co
813001	6	10	40	2	55	145	6	9	14	2	2	2	2	2	2
812	14	17	68	2	24	80	2	9	10	2	2	2	2	2	2
811	2	22	10	2	8	85	2	2	25	2	2	2	2	2	2
810	2	2	20	2	2	2	2	2	2	2	2	2	2	2	2
823	51	170	120	2	34	110	23	70	72	10	3	0.12	-	0.15	-
827	28	1050	2100	2	65	240	24	70	2	2	2	2	-	0.20	-
822	8	18	16	2	20	200	2	12	2	2	2	2	-	-	-
825	3	18	14	2	11	230	4	9	2	2	2	2	-	-	-
827	5	18	20	2	16	310	2	9	2	2	2	2	-	-	-
815	155	4000	2370	10	240	250	85	40	135	10	7	2	-	0.10	-
816	140	38	38	10	31	40	10	5	4	15	2	2	-	-	-
819	110	85	112	12	25	280	10	12	10	10	2	2	-	-	-
828	210	45	135	12	85	160	2	7	12	2	2	2	-	0.07	-
826	18	48	110	4	15	145	2	8	6	2	2	2	-	-	-
824	530	20	65	2	34	25	16	7	9	15	2	2	-	0.05	-
821	20	26	65	2	45	220	4	7	2	2	2	2	-	-	-
820	15	26	65	2	120	270	4	12	8	2	2	2	-	-	-
828	65	24	70	4	20	190	8	10	10	10	2	2	-	-	-
829	2	8	14	2	6	250	4	7	8	10	2	2	-	-	-
845	4	21	70	2	10	25	7	8	4	2	2	2	-	-	-
821	135	32	34	2	46	180	2	6	4	2	2	2	-	-	-
821	24	44	90	4	2	500	10	18	10	10	2	2	-	-	-
826	2	8	14	2	6	250	4	7	8	10	2	2	-	-	-
844	250	280	280	2	55	270	8	175	260	2	2	2	-	0.04	-
818	20	46	240	2	50	240	4	8	8	2	2	2	-	-	-
164	18	20	105	2	60	155	2	7	4	2	2	2	-	-	-
167	18	18	100	4	45	135	4	8	10	2	2	2	-	-	-
171	4	65	62	2	14	85	12	3	10	2	2	2	-	-	-
176	16	22	65	2	22	240	2	6	10	2	2	2	-	-	-
202	2	2	2	2	2	2	2	2	2	2	2	2	-	-	-
226	2	2	2	2	2	2	2	2	2	2	2	2	-	-	-
240	2	2	2	2	2	2	2	2	2	2	2	2	-	-	-
508	3	22	20	2	6	110	4	9	2	2	2	2	-	-	-
570	46	60	120	2	80	65	8	12	10	2	2	2	-	-	-
609	208	1370	1700	21	8	280	12	68	26	2	2	2	-	0.22	-
611	240	2300	2400	22	8	640	24	100	14	2	2	2	-	1.22	-



02\_4819  
Tasmania - Regional Bulk Sampling - Inter-Office  
Memorandum  
CSR Limited  
Ellis, P.D.

BULK ANALYSES  
0.3 Au } TETRAH  
1.2 Cu }  
0.5 Ag }  
0.3 Au } TETRAH  
1.2 Cu }  
0.5 Ag }

DRURY CAPE	ARMAR AUER	WELLER BOLS
CONICAL ROCKS	PIEMAN	SOPRA
7814	7944	8014
	CAPE SERRAL	FRANKLIN
	7953	8013

**CSR LIMITED - AMCD**

PIEMAN

7914

SCALE 1:100 000  
DRAWN B.D. P.D.  
DATE 7-85 12/1/85

# PIEMAN

# 1:100,000

# LAND TENURE

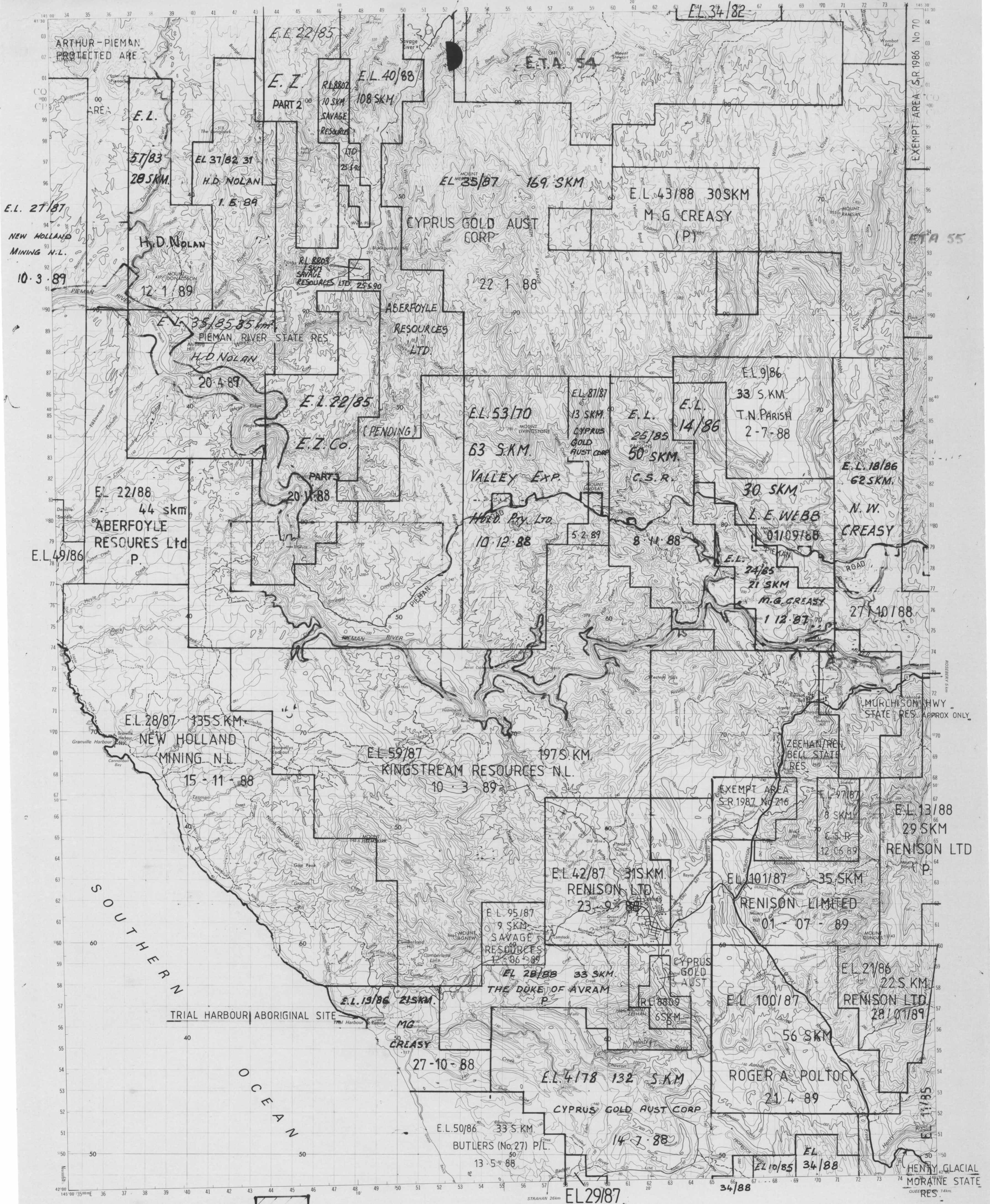
929145

TASMANIA 1:100 000  
TOPOGRAPHIC SURVEY

PIEMAN

REFER TO THIS MAP AS SHEET 7914 EDITION 3 1977

E.T.A. 53



AND VESTED IN THE H.E.C. SHOWN

SCALE 1:100000

PRODUCED BY THE Survey Branch, Lands Department, Hobart 1977.  
NOMENCLATURE: Topographic names on this map have been approved by the Nomenclature Board of Tasmania.  
MAP ACCURACY: The average accuracy of this map is 2.25 metres in the horizontal position of well defined detail and 2.5 metres in elevation.  
MAP RELIABILITY: Topographic information shown on this map is correct to 1977.  
ROAD CLASSIFICATION: Roads are classified according to their intended function as part of the national road system.  
The representation of a road or track on this map is no evidence of the existence of a right of way.

UNIVERSAL GRID REFERENCE  
BEFORE GIVING A GRID REFERENCE, CIVILIAN USERS  
SHOULD STATE THE NUMBER AND NAME OF THIS MAP:  
7914. PIEMAN

GRID ZONE DESIGNATION	TO GIVE A STANDARD REFERENCE ON THIS SHEET TO NEAREST 100 METRES
55G	SAMPLE POINT 846.0 ABOVE AGN/W
100000 METRE SQUARE IDENTIFICATION	1 Read letters identifying 100 000 metre square in which the point lies
CP	2 Locate first VERTICAL grid line to LEFT of point and read LARGE figures labelling the line in either the top or bottom margin, or on the line itself
CP	3 Estimate tenths from grid line to point
CP	4 Locate first HORIZONTAL grid line BELOW point and read LARGE figures labelling the line in either the left or right margin, or on the line itself
CP	5 Estimate tenths from grid line to point
CP	SAMPLE REFERENCE: CP528603
CP	IF REPORTING BEYOND 10° IN ANY DIRECTION, prefix Grid Zone Designation, as: 55GCP528603

5 cm

- Built up area, National route marker
- Principal road and highway, Cutting
- Secondary road, Road bridge
- Minor road, Road bridge
- Vehicular track
- Road distance in kilometres
- Railway, multiple track, Station, Railway bridge
- Railway, single track, Railway tunnel
- Light railway or tramway
- Power transmission line
- Fence, Levee or bank
- Mine, Windmill, Yard, Quarry
- Building's, Church, Ruin, Drive-in theatre
- Trig station, Bench mark, Spot elevation
- Contour with value, Depression contour
- Forest, dense
- Forest, medium
- Pine plantation
- Orchard
- Windbreak
- Lake, perennial, stream, perennial
- Lake, intermittent, Stream, intermittent
- Lake, mainly dry, Stream, mainly dry
- Swamp, perennial, intermittent
- Land subject to inundation
- Bore or well, Spring, Tank or small dam
- Breakwater, Pier, Wharf
- Wreck, exposed, Lighthouse
- Rock, bare or awash, Foreshore flat, Sand
- Reef, Rock ledge

BLACK NUMBERED GRID LINES ARE 1000 METRE INTERVALS OF THE AUSTRALIAN MAP GRID VALUES ARE SHOWN IN FULL ONLY AT THE SOUTH WEST CORNER OF THE HORIZONTAL DATUM: AUSTRALIAN GEODETIC DATUM 1966  
VERTICAL DATUM: AUSTRALIAN HEIGHT DATUM  
TRANSVERSE MERCATOR PROJECTION  
CONTOUR INTERVAL 40 METRES  
ELEVATIONS IN METRES

## 02\_4819

Tasmania - Regional Bulk Sampling - Inter-Office  
Memorandum  
CSR Limited\*  
Ellis, P.D.



TRUE NORTH, GRID NORTH AND MAGNETIC NORTH ARE SHOWN DIAGRAMMATICALLY FOR THE CENTRE OF THE MAP. MAGNETIC NORTH IS CORRECT FOR 1977 AND MOVES EASTWARD BY 0.1° IN ABOUT THREE YEARS.

INDEX TO ADJOINING MAPS			
SANDY CREEK	ARTHUR RIVER	HELLIER	
7915	7915	8015	
CONICAL ROCKS	PIEMAN	SOPHIA	
7914	7914	8014	
CAPE SORRELL	FRANKLIN		
7913	8013		

PART OF 1:250 000 SERIES  
SK55 - 3 BURDIE  
SK55 - 5 QUEENSTOWN

SHEET 7914  
PIEMAN  
TASMANIA  
EDITION 3 1977

MERCURY WATCH

929146



KEY

- Q Quaternary : Alluvium, sand, gravel and talus. Till, fluvial, lacial, periglacial and associated deposits.
- Ts Tertiary : Non-marine sequences; marine limestone.
- Pc Triassic Permian or Carboniferous : Fluvio-lacustrine sequences of sandstone, mudstone with carbonaceous sequences. Fresh water sequence with some coal measures. Upper eolian marine sequence of pebbly mudstone, pebbly sandstone and limestone. Fresh water sequence with some coal measures. Lower glacio-marine sequence of pebbly mudstone, pebbly sandstone, minor limestone, Tazewell oil shale and basal Hillite.
- Da Devonian Silurian : Some quartz sandstone sequences and siltstone-shale sequences. Devonian limestone-siltstone.
- O Ordovician : Limestone sequence with siltstone in some areas. Siliceous terrestrial conglomerate, marine quartz sandstone and siltstone.
- E Cambrian : Middle-upper Cambrian fossiliferous usually greywacke turbidite sequences. Possibly upper Cambrian shallow water deposits, probably Cambrian or fossiliferous usually greywacke turbidite sequences, probably Cambrian or Silurian orthoquartzite sequence.

- pe PreCambrian: Comparatively unmetamorphosed sequences. Mudstone, sandstone, orthoquartzite, quartzite, turbidite successions, conglomerate, dolomite, metamorphic rocks. Plutonic sequences, metaquartzite sequences with some platy quartzite units; amphibolite.
- pem

Igneous Rocks

- Tb Tertiary : Basalt and related rock types.
- Jal Jurassic : Diorite and related rock types.
- Dbu Carboniferous: Dominantly adamellite-granite; Devonian biotite-hypersthene-adamellite porphyry.
- e Cambrian : e.a: Granitic rocks. Acid with intermediate volcanic and associated rocks. e.b: Coarser grained basic rocks, serpentinite, peridotite and associated rocks. e.c: Basic-intermediate volcanic and associated rocks.

N.B. — = faults.

02\_4819

Tasmania - Regional Bulk Sampling - Inter-Office Memorandum  
CSR Limited  
Ellis, P.D.

5 cm

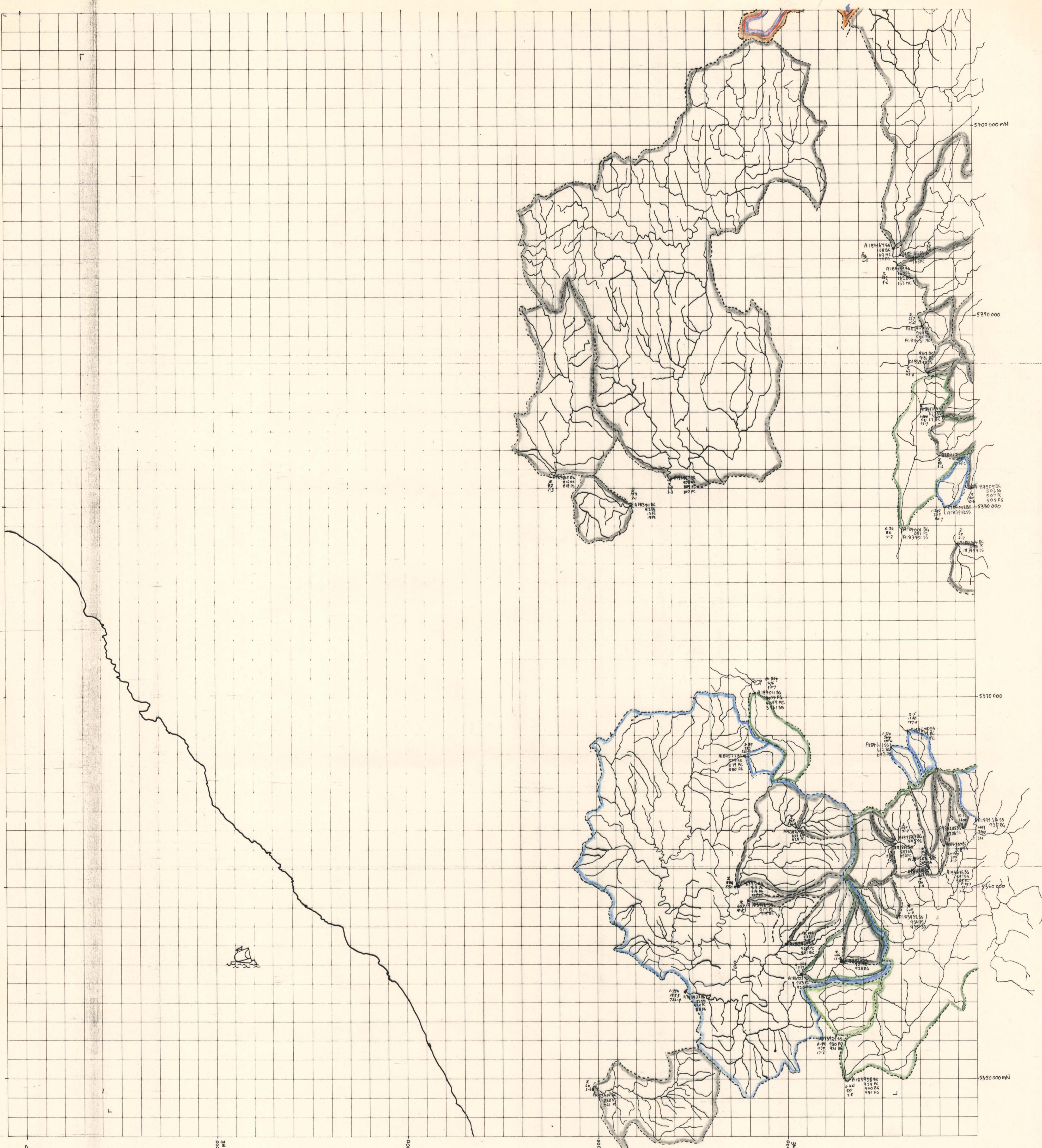
SANDY CAPE 7815	ARTHUR RIVER 7915	HELMER 8015
CONICAL ROCKS 7814	PIEMAN 7914	SOPHIA 8014
	CAPE SORELL 7913	FRANKLIN 8013

CSR LIMITED - AMCD

PIEMAN

7914

SCALE 1:100 000  
DRAWN B.J.  
DATE 10-85

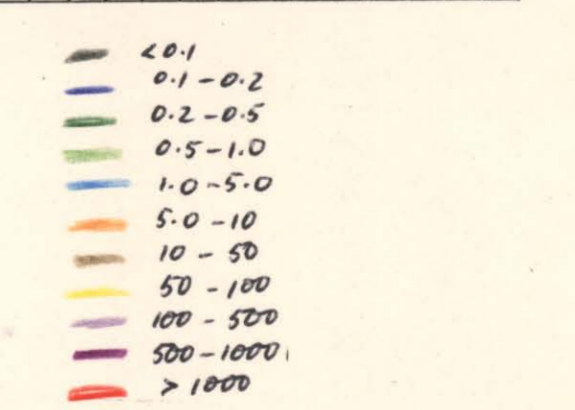
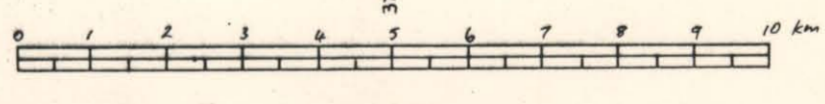


**STREAM SEDIMENT**

Sample ID	Cu	Pb	Zn	Bi	As	Sb	Ag	W	Hg	Mo	Se
A183001	6	15	40	X	55	125	4	4	X	X	X
812	14	19	44	X	24	80	X	9	10	X	X
814	2	22	49	X	8	89	X	26	25	X	X
820	2	X	20	X	24	4	6	19	10	X	X
823	59	574	1240	X	24	119	27	70	21	10	3
827	24	1050	5100	X	15	24.6	26	70	X	X	X
882	9	19	16	X	10	240	X	12	4	X	X
885	5	19	14	X	12	230	X	4	X	X	X
887	5	19	20	X	10	270	X	4	X	X	X
812	155	1400	3370	X	10	240	240	95	60	135	10
816	140	38	38	X	10	36	40	10	5	15	X
814	110	90	115	X	12	45	490	10	12	10	X
828	320	65	135	X	12	95	140	X	7	12	X
824	19	49	10	X	10	195	X	9	6	X	X
828	230	24	65	X	24	25	4	7	9	15	X
832	20	36	65	X	65	270	4	7	20	X	X
836	15	36	115	X	170	270	4	12	8	X	X
838	65	74	70	X	70	180	8	10	10	X	X
845	4	22	70	X	250	4	7	8	10	X	X
848	10	55	65	X	10	29	75	0	2	15	X
851	125	32	34	X	46	140	X	4	16	20	X
852	24	44	90	X	10	19	10	X	7	X	X
854	3	9	14	X	4	230	4	10	X	X	X
856	230	290	790	X	25	270	4	175	240	X	X
858	154	20	14	X	50	210	4	8	X	X	X
864	16	18	44	X	60	115	X	7	4	X	X
867	30	18	140	X	15	135	4	9	10	X	X
871	17	15	44	X	14	85	12	3	10	X	X
874	14	42	65	X	22	240	4	8	10	X	X
877	3	23	20	X	10	195	X	4	8	X	X
880	3	20	14	X	10	190	X	4	8	X	X
886	4	25	60	X	12	210	X	4	8	X	X
888	3	22	20	X	6	100	X	4	8	X	X
879	46	60	320	X	80	45	4	12	10	X	X
889	125	700	700	X	11	110	12	48	20	X	X
811	340	1350	6400	X	4	640	24	40	10	X	X

5 cm

02\_4819  
Tasmania - Regional Bulk Sampling - Inter-Office Memorandum  
CSR Limited  
Ellis, P.D.



SANDY CAPE 7815	ARTHUR RIVER 7915	WELLSER 8015
CINICAL ROCKS 7814	PIEMAN 7914	SOPINA 8014
CAPE SOMER 7813	FRANKLIN 8013	

**CSR LIMITED - AMCD**

PIEMAN

7914

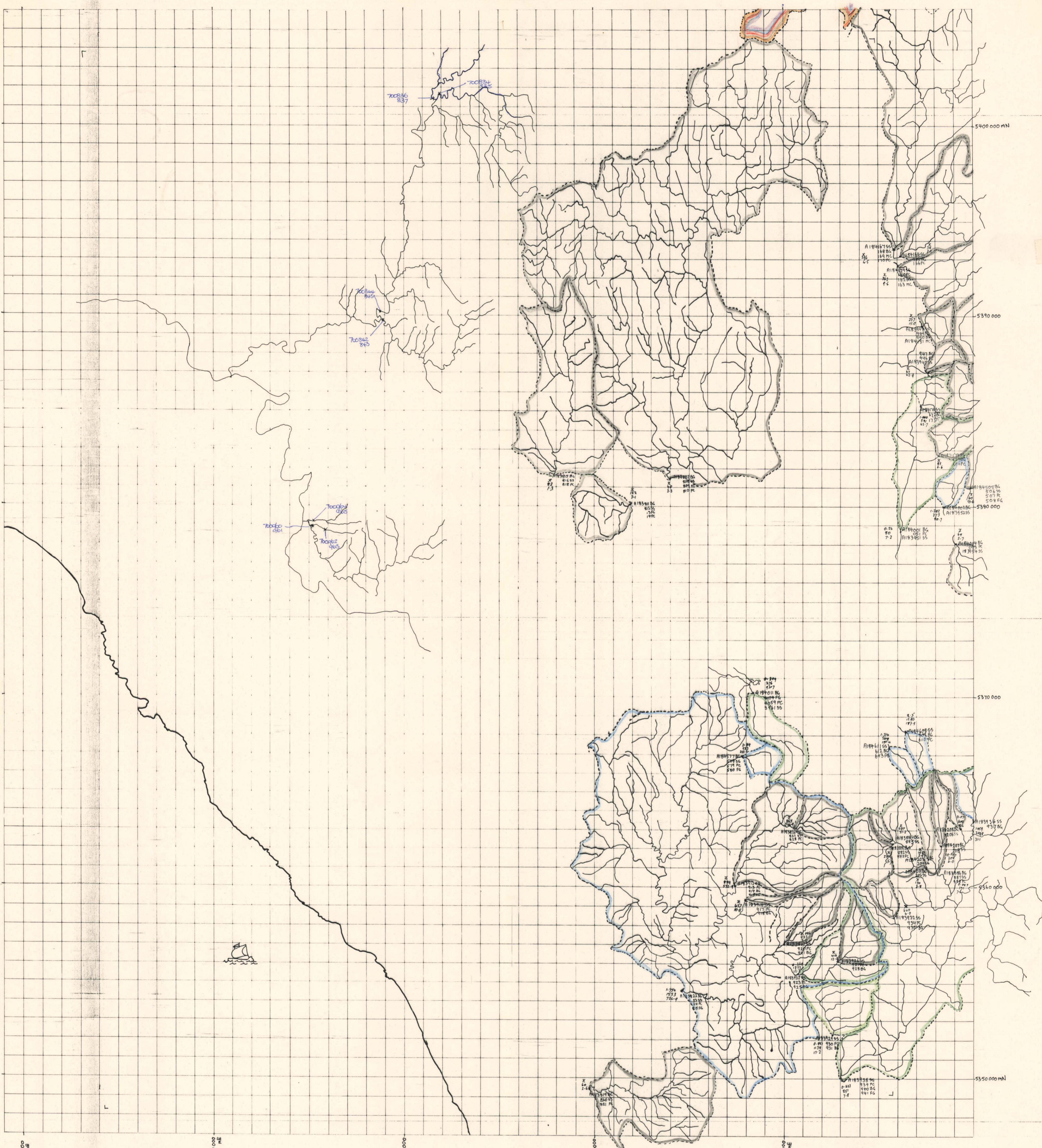
SCALE 1:100,000  
DRAWN B.D. 705  
DATE 7-85 H/L/pt

BULK GOLD  
0.3 Au } TETRAH  
1.2 Cu }  
0.5 Ag }

72 Au } METH  
71 Cu } METH/MICRO  
70 Ag } LABORATORIES

929148

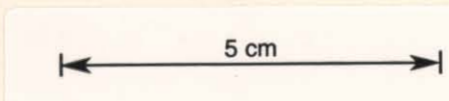
PIEMAN



**STREAM SEDIMENT**

Sample No.	Cu	Pb	Zn	Bi	Ni	As	Sb	Sn	W	Ag	Au	Hg
812	14	10	40	2	55	165	6	4	10	x	x	x
816	2	32	10	2	8	80	x	x	25	x	x	x
820	2	20	20	x	20	20	x	x	10	x	x	x
823	23	27	120	x	20	10	18	70	x	x	0.15	0.20
827	28	100	200	x	45	240	26	70	x	x	x	x
832	9	18	16	x	20	200	x	12	x	x	x	x
835	3	18	14	x	12	230	x	4	x	x	x	x
837	5	18	10	x	10	370	x	4	x	x	x	x
842	113	400	370	x	20	250	85	60	185	10	7	x
844	180	28	28	x	10	36	40	10	5	x	x	x
849	10	85	112	x	12	25	200	10	12	10	x	x
858	18	48	110	x	65	195	x	9	4	x	x	0.07
870	530	20	65	x	26	25	16	7	9	15	x	0.05
872	20	20	65	x	65	230	x	7	2	x	x	x
876	25	26	105	x	100	270	x	12	9	x	x	x
878	65	26	70	x	70	180	x	10	10	x	x	x
885	4	22	20	x	20	220	x	7	9	x	x	x
898	10	25	65	x	20	25	x	4	2	x	x	0.05
899	135	22	26	x	20	180	x	4	4	x	x	x
902	26	44	70	x	20	540	x	10	19	10	x	x
904	2	16	10	x	6	230	x	6	10	x	x	x
914	270	8	20	x	85	270	x	175	260	1	x	0.06
918	20	66	260	x	50	210	x	8	x	x	x	x
924	16	70	105	x	60	115	x	7	10	x	x	x
927	6	65	42	x	14	85	x	3	10	x	x	x
930	6	62	64	x	22	200	x	6	18	x	x	x
932	26	20	20	x	20	145	x	7	9	x	x	x
936	2	35	60	x	21	210	x	4	11	x	x	x
938	3	22	20	x	6	110	x	6	6	x	x	x
942	46	60	260	x	80	64	x	12	10	x	x	x
949	208	1370	700	x	21	780	x	11	64	10	3	0.03
950	300	230	600	x	10	60	x	14	10	x	x	0.25
951	14	41	15	x	8	60	x	4	4	x	x	x
963	10	10	15	x	10	10	x	10	10	x	x	x
965	20	14	40	x	20	10	x	10	10	x	x	x
966	20	14	40	x	20	10	x	10	10	x	x	x
967	20	14	40	x	20	10	x	10	10	x	x	x
968	20	14	40	x	20	10	x	10	10	x	x	x
969	20	14	40	x	20	10	x	10	10	x	x	x
970	20	14	40	x	20	10	x	10	10	x	x	x
971	20	14	40	x	20	10	x	10	10	x	x	x
972	20	14	40	x	20	10	x	10	10	x	x	x
973	20	14	40	x	20	10	x	10	10	x	x	x
974	20	14	40	x	20	10	x	10	10	x	x	x
975	20	14	40	x	20	10	x	10	10	x	x	x
976	20	14	40	x	20	10	x	10	10	x	x	x
977	20	14	40	x	20	10	x	10	10	x	x	x
978	20	14	40	x	20	10	x	10	10	x	x	x
979	20	14	40	x	20	10	x	10	10	x	x	x
980	20	14	40	x	20	10	x	10	10	x	x	x
981	20	14	40	x	20	10	x	10	10	x	x	x
982	20	14	40	x	20	10	x	10	10	x	x	x
983	20	14	40	x	20	10	x	10	10	x	x	x
984	20	14	40	x	20	10	x	10	10	x	x	x
985	20	14	40	x	20	10	x	10	10	x	x	x
986	20	14	40	x	20	10	x	10	10	x	x	x
987	20	14	40	x	20	10	x	10	10	x	x	x
988	20	14	40	x	20	10	x	10	10	x	x	x
989	20	14	40	x	20	10	x	10	10	x	x	x
990	20	14	40	x	20	10	x	10	10	x	x	x
991	20	14	40	x	20	10	x	10	10	x	x	x
992	20	14	40	x	20	10	x	10	10	x	x	x
993	20	14	40	x	20	10	x	10	10	x	x	x
994	20	14	40	x	20	10	x	10	10	x	x	x
995	20	14	40	x	20	10	x	10	10	x	x	x
996	20	14	40	x	20	10	x	10	10	x	x	x
997	20	14	40	x	20	10	x	10	10	x	x	x
998	20	14	40	x	20	10	x	10	10	x	x	x
999	20	14	40	x	20	10	x	10	10	x	x	x

**02\_4819**  
 Tasmania - Regional Bulk Sampling - Inter-Office Memorandum  
 CSR Limited  
 Elms, P.D.



SANDY CAPE	ARTAR RIVER	HELLER
7815	7815	8015
CONICAL ROCKS <td>PIEMAN</td> <td>SOPAN</td>	PIEMAN	SOPAN
7814	7914	8014
	CAPE SORRELL	FRANKLIN
	7813	8013

**CSR LIMITED - AMCD**

PIEMAN

7914

SCALE 1:100,000  
 DRAWN B.D. PGG  
 DATE 7-85 11/85

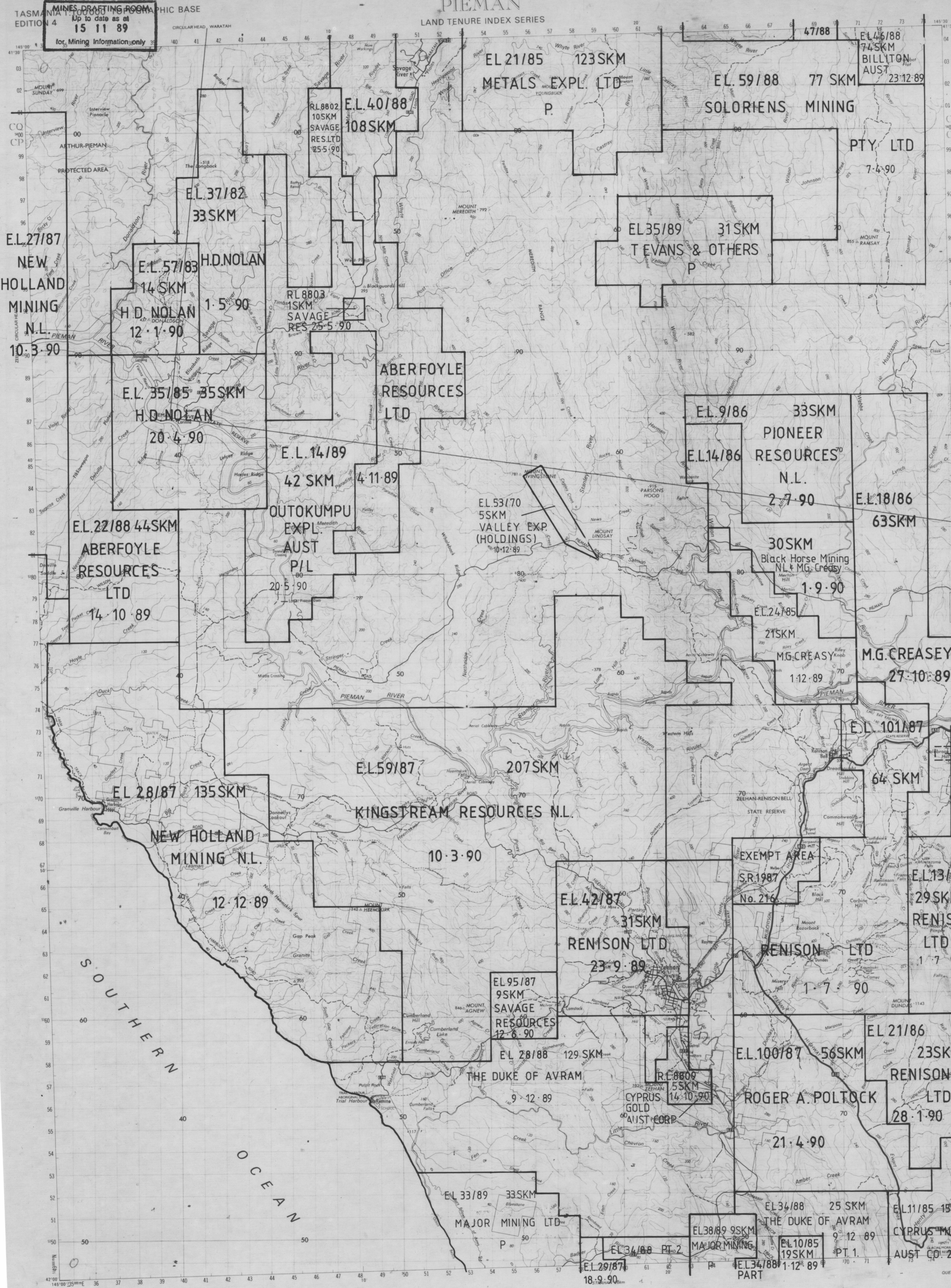
PIEMAN

1:100,000

LAND TENURE

929149

REFER TO THIS MAP AS LTIS SHEET 7914 EDITION 1 1984



COLEBROOK HILL FOSSICKING AREA  
ask for a Free Map Sales brochure  
MAP Lands Department, Box 444,  
Hobart. TASMAR Publications, telephone

EL 101/87	EL 101/87	EL 101/87	EL 101/87
EL 101/87	EL 101/87	EL 101/87	EL 101/87
EL 101/87	EL 101/87	EL 101/87	EL 101/87
EL 101/87	EL 101/87	EL 101/87	EL 101/87
EL 101/87	EL 101/87	EL 101/87	EL 101/87
EL 101/87	EL 101/87	EL 101/87	EL 101/87
EL 101/87	EL 101/87	EL 101/87	EL 101/87
EL 101/87	EL 101/87	EL 101/87	EL 101/87
EL 101/87	EL 101/87	EL 101/87	EL 101/87
EL 101/87	EL 101/87	EL 101/87	EL 101/87

S MAP SHEET INDEX

TASMANIA  
1:100 000  
TOPOGRAPHIC  
MAP

LAND TENURE INDEX  
Edition 1, 1984

02\_4819

Tasmania - Regional Bulk Sampling - Inter-Office Memorandum  
CSR Limited  
Ellis, P.D.

LTIS SHEET 7914  
PIEMAN  
EDITION 1 1984

PUBLISHED BY  
LANDS DEPARTMENT HOBART

# Pipers River

# 1:100,000

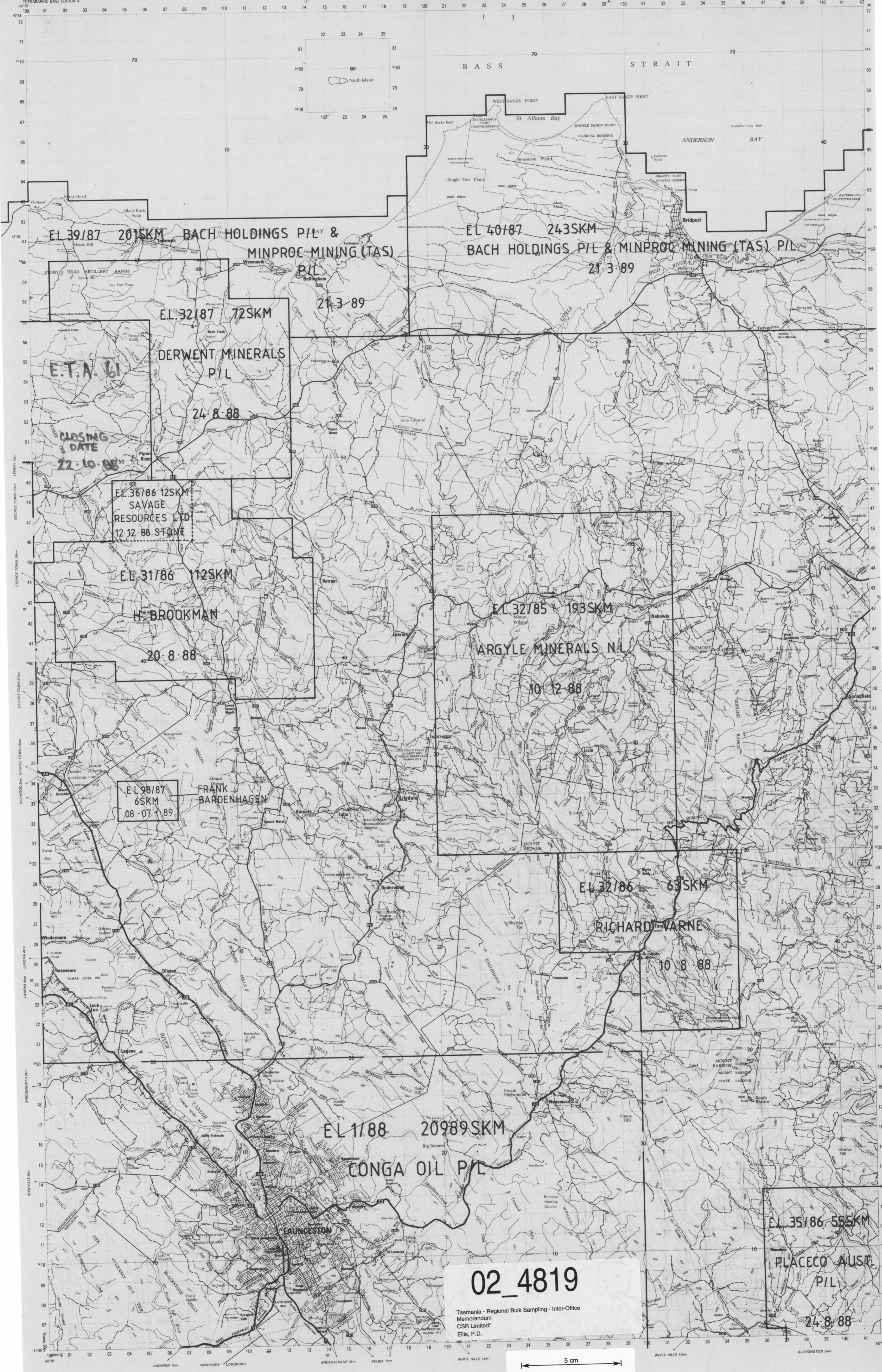
## LAND TENURE

929150

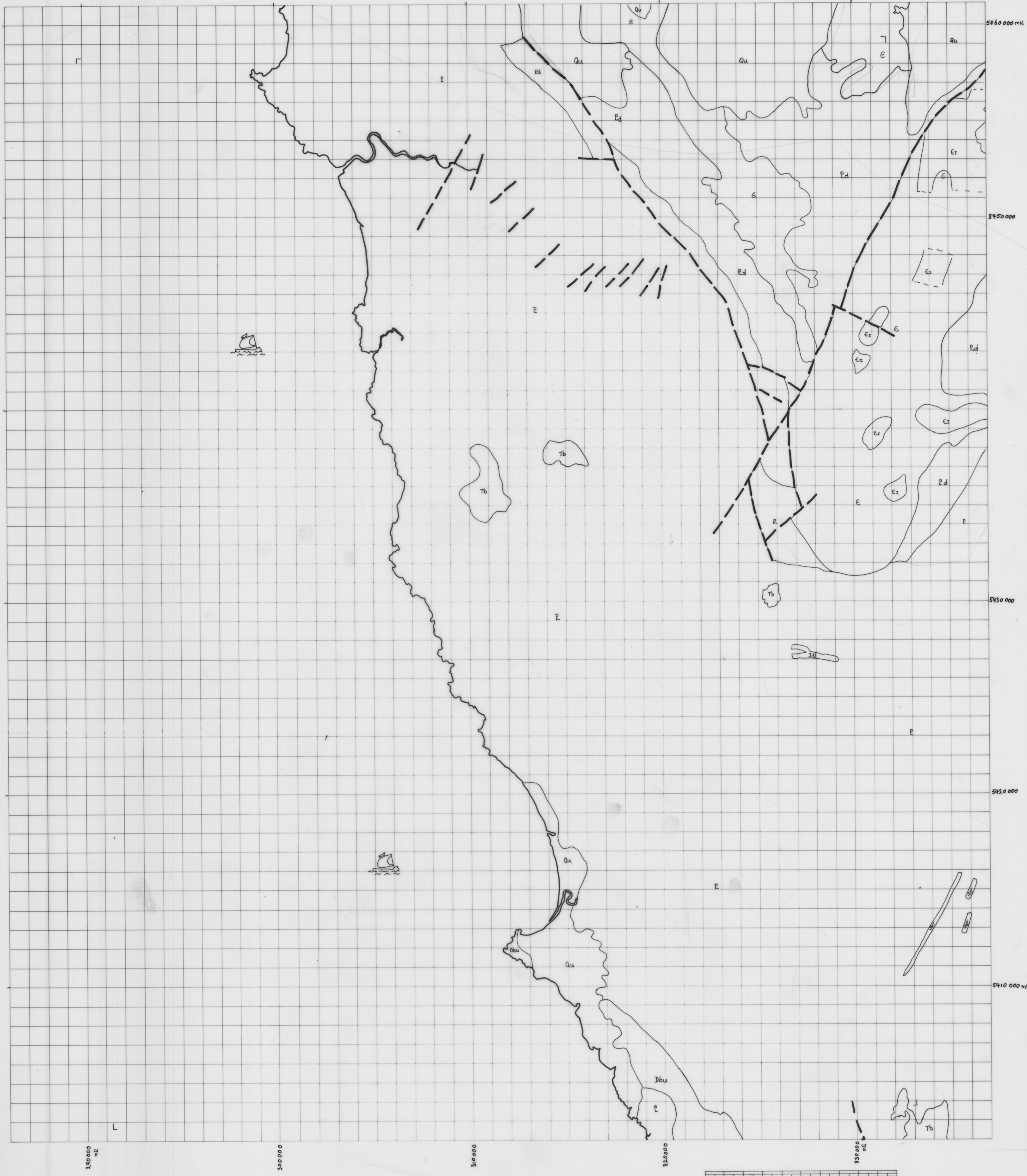
TASMANIA 1:100 000  
TOPOGRAPHIC BASE EDITION 4

### PIPERS

REFER TO THIS MAP AS LTIS SHEET 8315 EDITION 2 1984



929151



**KEY**

- Qu Quaternary Alluvium, sand, gravel and talus.
  - E Cambrian Middle-upper Cambrian fossiliferous usually greywacke turbidite sequences acid with intermediate volcanic fossiliferous upper Cambrian shallow water deposits, basic intermediate volcanic, probably Cambrian volcaniferous usually greywacke turbidite sequences, probably Cambrian orthoquartzite sequence.
  - P Precambrian Compensatively metamorphosed sequences. Metakone sandstone sequences, orthoquartzite, quartzite, turbidite successions, conglomerate, dolomite, basalt lava.
  - Ed Pre-Cambrian Siderite.
- Igneous Rocks**
- Tb Tertiary Basalt and related rock types.
  - Jd Jurassic Dolerite and related rock types.
  - Dbu J. Carboniferous Dominantly adamellite-granite.
  - U Devonian Acid with intermediate volcanic and associated rocks.
  - Ez Cambrian Acid with intermediate volcanic and associated rocks.
- Fault.

5 cm

**02\_4819**  
 Tasmania - Regional Bulk Sampling - Inter-Office  
 Memorandum  
 CSR Limited\*  
 Ellis, P.D.

WELCOME	CAROLAN
7916	7916
SANDY	ARTHUR
CAPE	RIVER
7915	7915
CONICAL	PIEFAN
ROCKS	7914

**CSR LIMITED - AMCD**

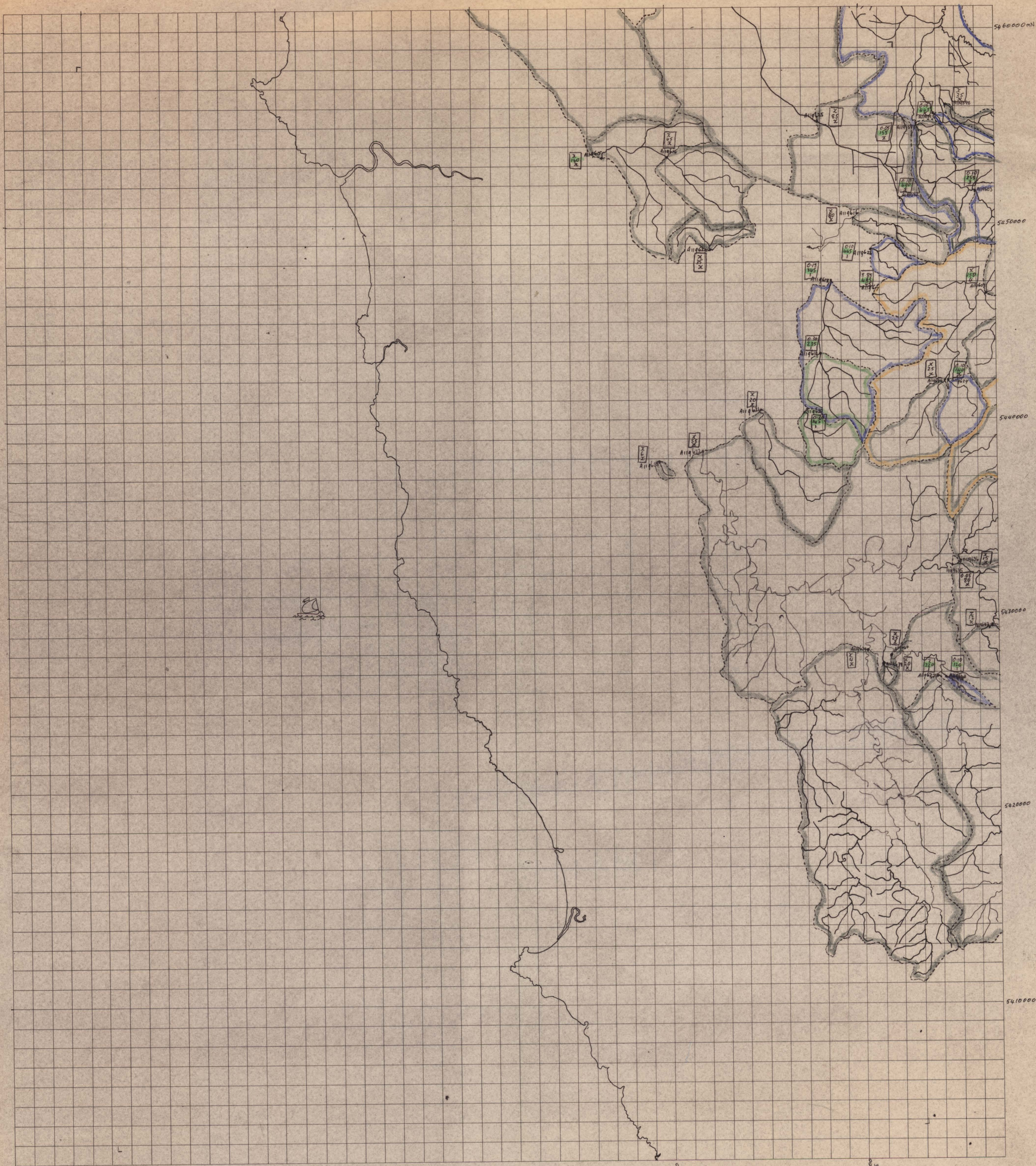
SANDY CAPE

7815

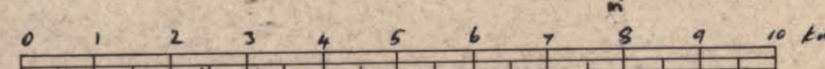
SCALE 1:100000  
 DRAWN B.D.  
 DATE 7-95

929152

SANDY CAPE

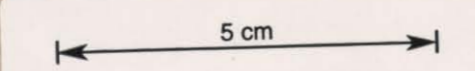


Sample No.	CU	PL	Zn	BI	NI	BA	SA	AS	W	AG	AU	MO	Hg
595	85	10	145	x	80	-	-	9	13	10	-	-	-
596	90	12	150	x	85	-	-	10	14	11	-	-	-
597	100	15	160	x	90	-	-	11	15	12	-	-	-
598	20	6	30	x	30	-	-	3	4	3	-	-	-
603	42	6	180	x	100	-	-	7	9	8	-	-	-
605	20	20	10	x	52	-	-	6	12	10	-	-	-
610	8	4	105	x	50	-	-	2	8	6	-	-	-
615	16	2	68	x	30	-	-	x	4	20	-	-	-
616	65	4	95	x	60	-	-	6	6	2	-	-	-
617	180	10	120	x	80	-	-	10	10	10	-	-	-
618	60	6	120	x	80	-	-	4	4	10	-	-	-
619	65	8	180	x	95	-	-	5	4	10	-	-	-
620	30	8	90	x	70	-	-	3	10	10	-	-	-
621	14	6	18	x	26	-	-	2	10	35	-	-	-
622	10	4	10	x	x	-	-	2	10	35	-	-	-
623	80	10	100	x	100	-	-	10	4	10	-	-	-
624	20	2	30	x	22	-	-	3	4	10	-	-	-
625	12	6	26	x	29	-	-	2	4	35	-	-	-
628	10	8	8	x	12	-	-	2	10	10	-	-	-
629	30	8	180	x	100	-	-	20	25	25	-	-	-
630	16	2	30	x	22	-	-	2	4	10	-	-	-
631	14	2	29	x	22	-	-	2	4	10	-	-	-
636	10	6	10	x	10	-	-	3	4	20	-	-	-
637	70	10	30	x	34	-	-	4	4	10	-	-	-
638	12	8	26	x	16	-	-	4	4	10	-	-	-
639	8	2	30	x	44	-	-	3	4	10	-	-	-
640	24	22	66	x	44	-	-	4	4	20	-	-	-
641	16	2	8	x	12	-	-	12	4	x	-	-	-
643	14	4	12	x	16	-	-	2	6	x	-	-	-



WELBONE	ORANGE
7816	7816
SANDY CAPE	ORANGE
7815	7815
CONRAD	PIEMONT
7814	7814

**02\_4819**  
 Tasmania - Regional Bulk Sampling - Inter-Office  
 Memorandum  
 CSRI Lumber  
 Ellis, P.D.



BULK GOLD

CSR LIMITED - AMCD

SANDY CAPE  
 7815  
 SCALE 1:100,000  
 DRAWN P.D.E.  
 DATE 7-85

0.1  
100  
Au  
Cu  
Ag  
PERTH METALLURGICAL LABORATORIES



Sample No.	Cu	Pb	Zn	Bi	Ni	Ba	Sb	As	Sn	W	Hg	Au	Mo	Hg
419585	85	10	465	x	80	-	-	9	13	10	-	-	-	-
546	90	12	480	x	85	-	-	3	2	15	-	-	-	-
547	80	8	210	x	60	-	-	5	4	2	-	-	-	-
548	20	2	22	x	20	-	-	3	x	x	-	-	-	-
603	42	6	180	x	100	-	-	7	12	10	-	-	-	-
605	20	20	40	x	32	-	-	6	12	10	-	-	-	-
614	8	6	105	x	50	-	-	2	86	30	-	-	-	-
615	16	2	68	x	90	-	-	2	4	20	-	-	-	-
616	55	8	80	x	60	-	-	1	6	2	-	-	-	-
617	180	120	200	x	42	-	-	1	6	25	-	-	-	-
618	60	6	120	x	80	-	-	6	x	10	-	-	-	-
619	85	8	180	x	25	-	-	5	4	10	-	-	-	-
620	20	8	40	x	70	-	-	5	10	10	-	-	-	-
621	16	6	18	x	26	-	-	2	10	15	-	-	-	-
622	10	4	10	x	2	-	-	2	40	2	-	-	-	-
623	80	10	180	x	100	-	-	10	4	2	-	-	-	-
624	20	2	28	x	22	-	-	3	4	10	-	-	-	-
625	12	2	28	x	22	-	-	2	4	10	-	-	-	-
628	10	6	8	x	12	-	-	2	10	10	-	-	-	-
629	28	8	180	x	40	-	-	20	x	25	-	-	-	-
634	16	2	20	x	22	-	-	2	x	x	-	-	-	-
635	16	2	20	x	22	-	-	2	x	x	-	-	-	-
636	10	6	10	x	10	-	-	3	4	20	-	-	-	-
637	10	10	20	x	24	-	-	4	4	10	-	-	-	-
638	12	8	26	x	16	-	-	4	4	10	-	-	-	-
639	8	2	20	x	10	-	-	3	4	10	-	-	-	-
640	26	22	86	x	44	-	-	6	4	20	-	-	-	-
641	16	2	8	x	12	-	-	4	4	10	-	-	-	-
643	16	4	12	x	16	-	-	2	2	10	-	-	-	-

02\_4819

Tasmania - Regional Bulk Sampling - Inter-Office Memorandum CSR Limited\* Elias, P.D.

5 cm

- 0.1 - 0.2
- 0.2 - 0.5
- 0.5 - 1.0
- 1.0 - 5.0
- 5.0 - 10.0

WELBONE	CORCHRA
7816	7816
SANDY CAPE	PIEMAN
7815	7815
CONRAD	PIEMAN
7814	7814

CSR LIMITED - AMCD

SANDY CAPE

7815

SCALE 1:100,000  
DRAWN P.D.E.  
DATE 7-85

BULK GOLD  
Au  
Cu  
Ag  
PURE METALLURGICAL LABORATORIES

929154

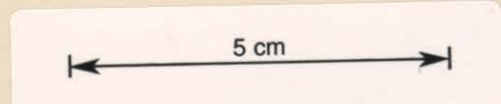
Panned Concentrates SANDY CAPE



Sn } XRF  
 W }  
 As }  
 Sb }  
 Au } FAS  
 Cu }  
 Pb }  
 Zn }  
 Ni }  
 Bi }  
 Ag }  
 Mo }

WELTON	HEAD
7816	7816
SANDY	NECK
CAVE	RIVER
7815	7815
COOK'S	FLANN
ROCKS	7814

02\_4819



Tasmania - Regional Bulk Sampling - Inter-Office  
 Memorandum  
 CSR Limited  
 EHS, P.D.

**CSR LIMITED - AMCD**

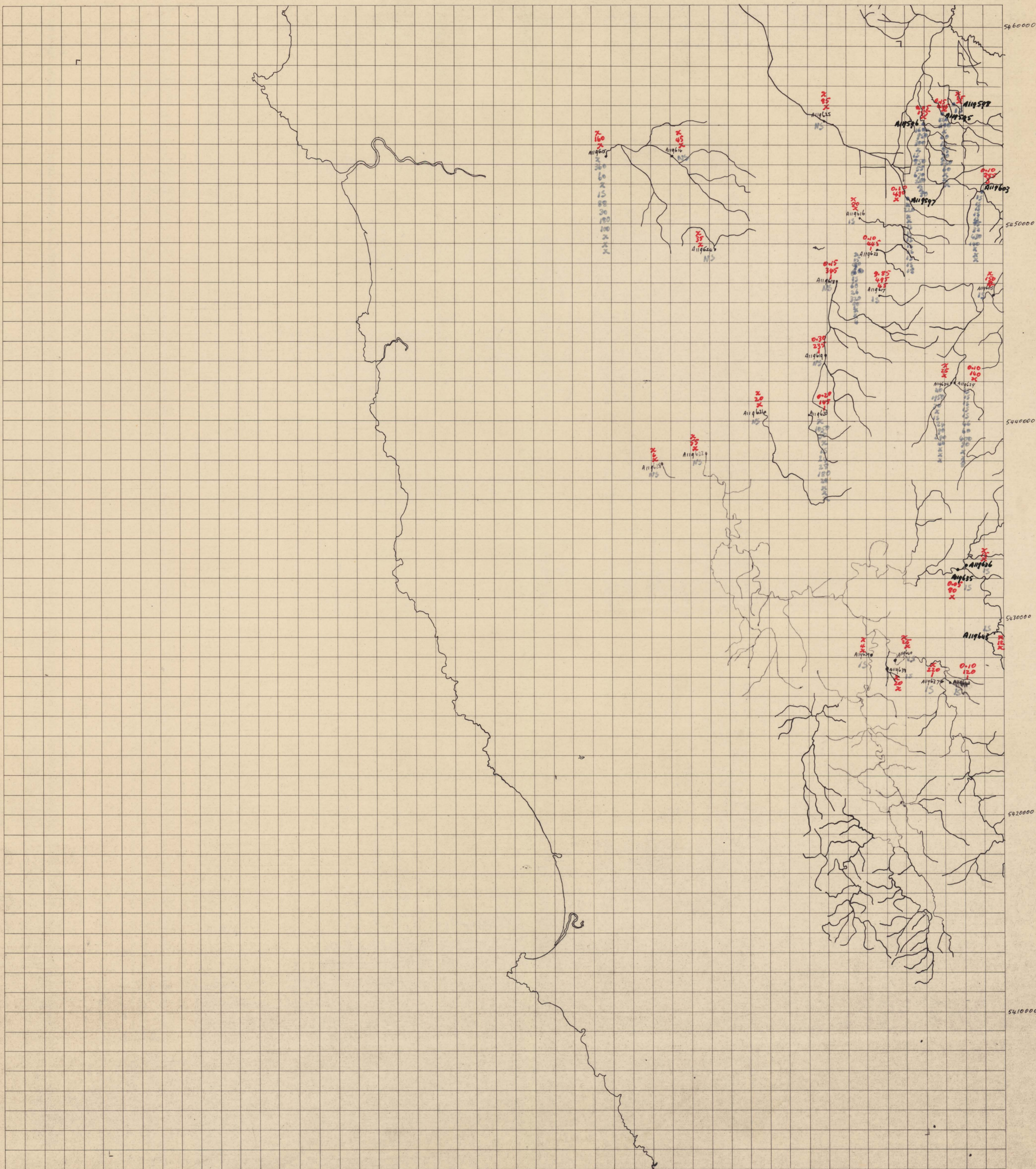
SANDY CAPE  
PANDED CONCENTRATES

7815

SCALE \_\_\_\_\_  
 DRAWN \_\_\_\_\_  
 DATE \_\_\_\_\_

929155

BULK GOLD/FERRUGINOUS GRAVELS SANDY CAPE



Ferruginous Gravel Bulk Gold

Fe  
Cu  
Pb  
Zn  
Ni  
Si  
Ag  
No

5 cm

02\_4819

Tasmania - Regional Bulk Sampling - Inter-Office  
Memorandum  
CSR Limited  
Ellis, P.D.

WELFORD	CHEVELL
7816	7916
SANDY CAPE	REVERA
7815	7915
CHEVELL	PIERRE
7814	7914

CSR LIMITED - AMCD

SANDY CAPE

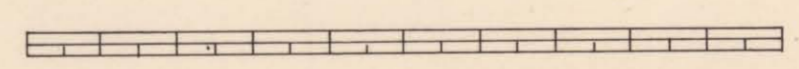
7815

SCALE  
DRAWN  
DATE

929156

Stream Sediment

SANDY CAPE



Sn } -20 mg - XRF  
 W }  
 As }  
 Mo }  
 Cu }  
 Pb } -20 mg - AAS  
 Zn }  
 Ni }  
 Si }

WELTON	COLEMAN
7816	7916
SANDY CAPE	REVER
7815	7915
COLEMAN	REVER
7814	7914

5 cm

02\_4819  
 Tasmania - Regional Bulk Sampling - Inter-Office Memorandum  
 CSR Limited  
 Ellis, P.D.

**CSR LIMITED - AMCD**

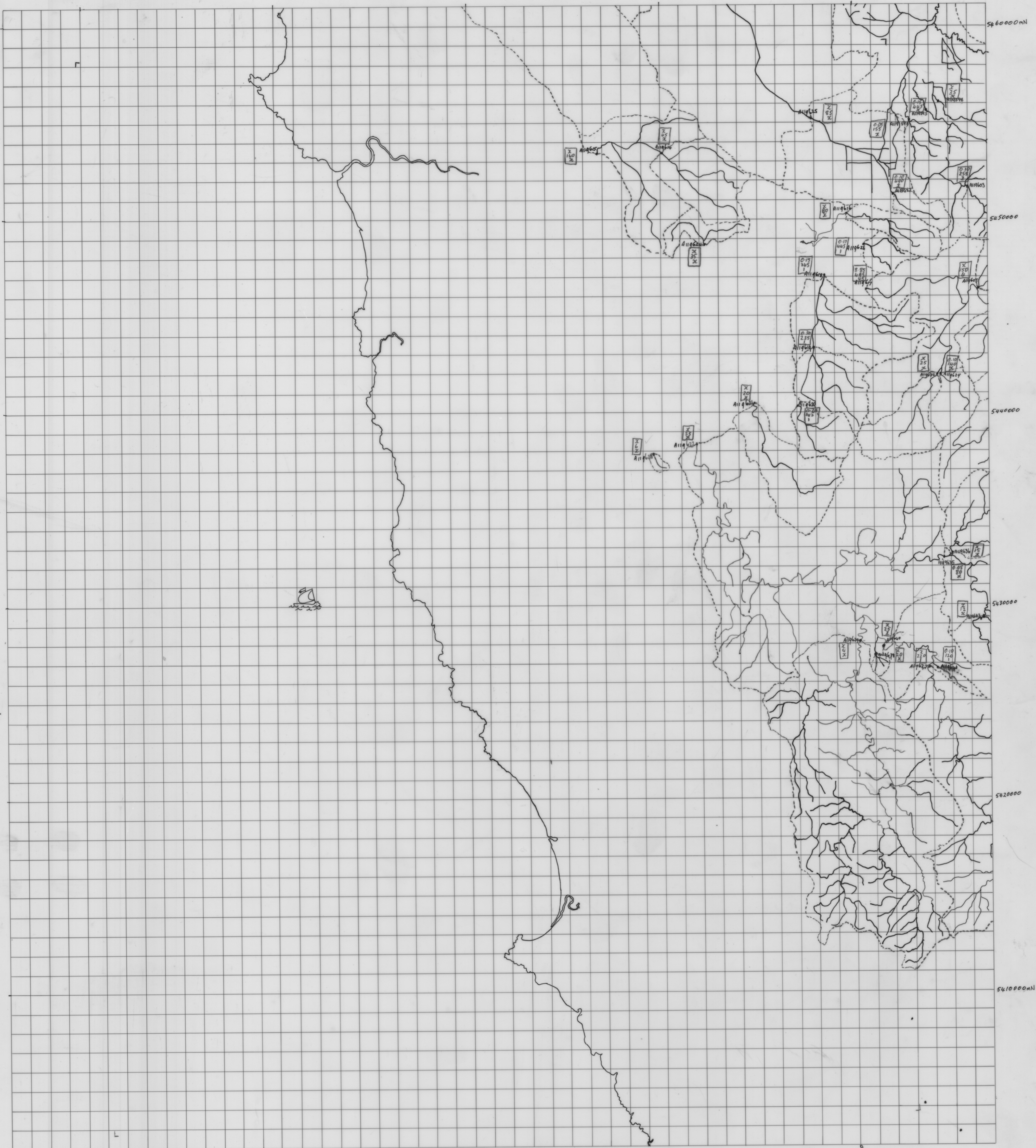
SANDY CAPE  
 STREAM SEDIMENT

7815

SCALE	
DRAWN	
DATE	

929157

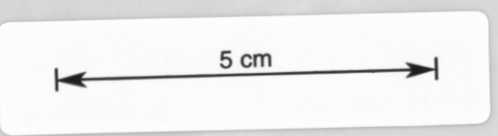
SANDY CAPE



Sample ID	Cl	Pl	Zn	Bi	Ni	Ba	Sb	As	Sn	W	Ag	Au	Mo	Hg
614	85	10	145	x	80	-	-	9	13	10	-	-	-	-
615	90	12	170	x	85	-	-	3	26	15	-	-	-	-
616	100	8	210	x	140	-	-	5	6	2	-	-	-	-
617	20	5	32	x	30	-	-	3	2	2	-	-	-	-
618	82	6	180	x	100	-	-	7	2	2	-	-	-	-
619	24	20	90	x	32	-	-	6	12	10	-	-	-	-
620	8	6	105	x	55	-	-	2	46	2	-	-	-	-
621	16	2	43	x	25	-	-	2	4	10	-	-	-	-
622	65	6	80	x	60	-	-	6	6	2	-	-	-	-
623	185	130	780	34	42	-	-	4200	5300	25	-	-	-	-
624	60	6	120	x	80	-	-	6	2	10	-	-	-	-
625	85	8	100	x	85	-	-	5	6	10	-	-	-	-
626	30	8	90	x	70	-	-	3	10	10	-	-	-	-
627	14	6	18	x	26	-	-	2	10	35	-	-	-	-
628	10	4	10	x	2	-	-	2	6	25	-	-	-	-
629	80	10	150	x	100	-	-	10	6	2	-	-	-	-
630	20	2	28	x	22	-	-	5	6	10	-	-	-	-
631	12	2	25	x	25	-	-	2	6	35	-	-	-	-
632	100	6	8	x	12	-	-	2	10	10	-	-	-	-
633	28	8	180	x	100	-	-	30	2	25	-	-	-	-
634	16	2	30	x	22	-	-	2	2	2	-	-	-	-
635	16	2	23	x	2	-	-	-	-	-	-	-	-	-
636	10	4	10	x	10	-	-	3	6	20	-	-	-	-
637	20	10	30	x	24	-	-	4	6	10	-	-	-	-
638	12	8	26	x	16	-	-	4	6	10	-	-	-	-
639	8	2	30	x	10	-	-	3	2	2	-	-	-	-
640	26	22	46	x	40	-	-	6	6	20	-	-	-	-
641	16	8	8	x	12	-	-	13	6	2	-	-	-	-
642	16	4	12	x	16	-	-	2	6	2	-	-	-	-

**02\_4819**  
Tasmania - Regional Bulk Sampling - Inter-Office  
Memorandum  
CSR Limited  
Ellis, P.D.

WELCOME	CORNER
7816	HEAD
SANDY	RIVER
CAPE	7815
ROCKS	PIEMAN
7814	7814



BULK GOLD  
0.1 Au  
100 Cu  
1 Ag  
PERTH METALLURGICAL LABORATORIES

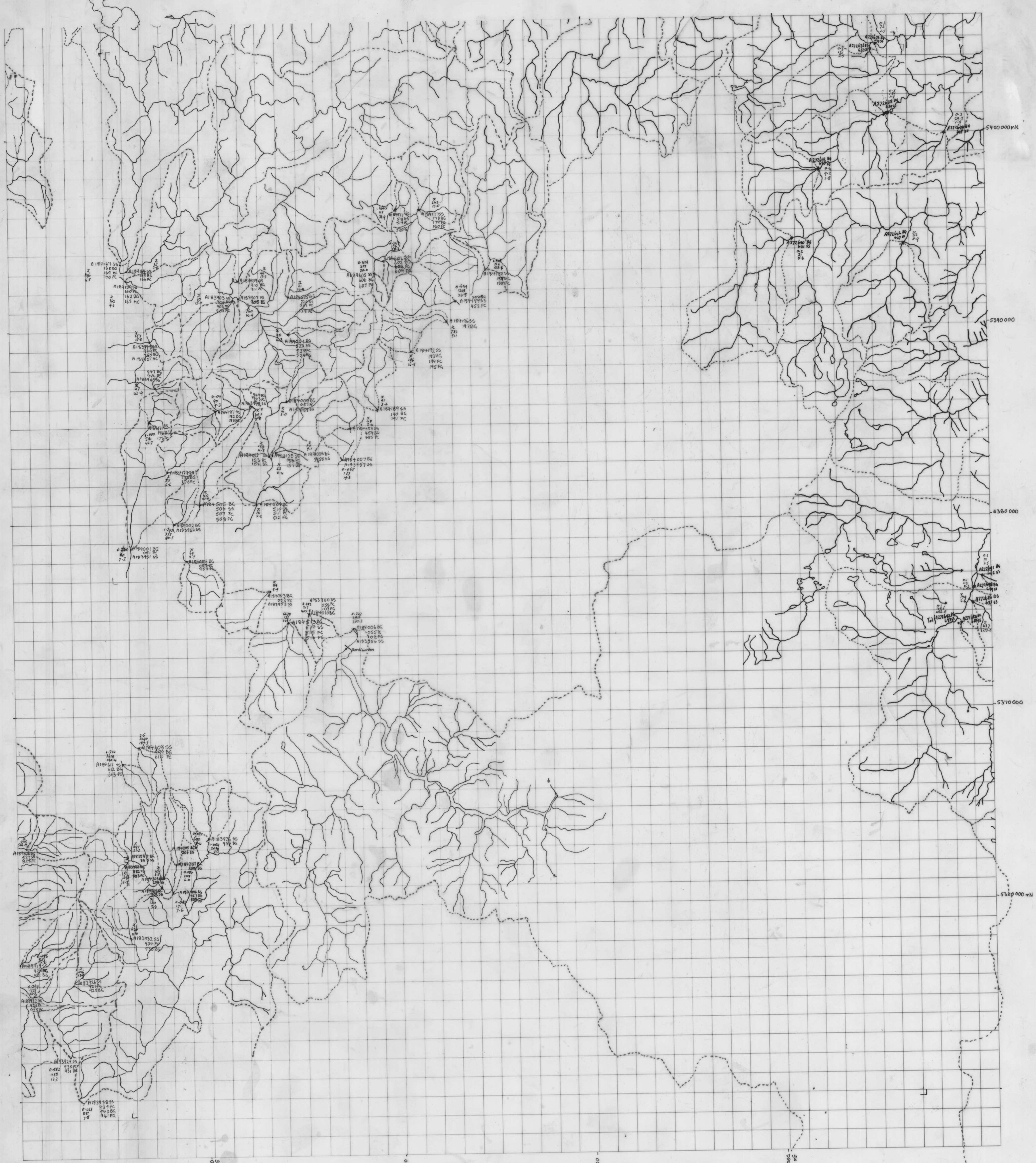
**CSR LIMITED - AMCD**

SANDY CAPE

7815

SCALE 1:100 000  
DRAWN P.D.E.  
DATE 7-85

929158



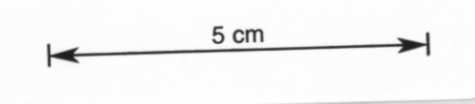
STREAM SEDIMENT

Sample ID	Cu	Pb	Zn	Bi	As	Sb	Mo	W	Ag	Au	Al	Hg
A183 837	18	150	185	24	26	230	10	28	10	X	X	X
838	3	18	16	X	20	20	4	X	X	X	X	X
839	1	18	16	X	20	20	4	X	X	X	X	X
840	1	18	16	X	20	20	4	X	X	X	X	X
841	1	18	16	X	20	20	4	X	X	X	X	X
842	1	18	16	X	20	20	4	X	X	X	X	X
843	1	18	16	X	20	20	4	X	X	X	X	X
844	1	18	16	X	20	20	4	X	X	X	X	X
845	1	18	16	X	20	20	4	X	X	X	X	X
846	1	18	16	X	20	20	4	X	X	X	X	X
847	1	18	16	X	20	20	4	X	X	X	X	X
848	1	18	16	X	20	20	4	X	X	X	X	X
849	1	18	16	X	20	20	4	X	X	X	X	X
850	1	18	16	X	20	20	4	X	X	X	X	X
851	1	18	16	X	20	20	4	X	X	X	X	X
852	1	18	16	X	20	20	4	X	X	X	X	X
853	1	18	16	X	20	20	4	X	X	X	X	X
854	1	18	16	X	20	20	4	X	X	X	X	X
855	1	18	16	X	20	20	4	X	X	X	X	X
856	1	18	16	X	20	20	4	X	X	X	X	X
857	1	18	16	X	20	20	4	X	X	X	X	X
858	1	18	16	X	20	20	4	X	X	X	X	X
859	1	18	16	X	20	20	4	X	X	X	X	X
860	1	18	16	X	20	20	4	X	X	X	X	X
861	1	18	16	X	20	20	4	X	X	X	X	X
862	1	18	16	X	20	20	4	X	X	X	X	X
863	1	18	16	X	20	20	4	X	X	X	X	X
864	1	18	16	X	20	20	4	X	X	X	X	X
865	1	18	16	X	20	20	4	X	X	X	X	X
866	1	18	16	X	20	20	4	X	X	X	X	X
867	1	18	16	X	20	20	4	X	X	X	X	X
868	1	18	16	X	20	20	4	X	X	X	X	X
869	1	18	16	X	20	20	4	X	X	X	X	X
870	1	18	16	X	20	20	4	X	X	X	X	X
871	1	18	16	X	20	20	4	X	X	X	X	X
872	1	18	16	X	20	20	4	X	X	X	X	X
873	1	18	16	X	20	20	4	X	X	X	X	X
874	1	18	16	X	20	20	4	X	X	X	X	X
875	1	18	16	X	20	20	4	X	X	X	X	X
876	1	18	16	X	20	20	4	X	X	X	X	X
877	1	18	16	X	20	20	4	X	X	X	X	X
878	1	18	16	X	20	20	4	X	X	X	X	X
879	1	18	16	X	20	20	4	X	X	X	X	X
880	1	18	16	X	20	20	4	X	X	X	X	X
881	1	18	16	X	20	20	4	X	X	X	X	X
882	1	18	16	X	20	20	4	X	X	X	X	X
883	1	18	16	X	20	20	4	X	X	X	X	X
884	1	18	16	X	20	20	4	X	X	X	X	X
885	1	18	16	X	20	20	4	X	X	X	X	X
886	1	18	16	X	20	20	4	X	X	X	X	X
887	1	18	16	X	20	20	4	X	X	X	X	X
888	1	18	16	X	20	20	4	X	X	X	X	X
889	1	18	16	X	20	20	4	X	X	X	X	X
890	1	18	16	X	20	20	4	X	X	X	X	X
891	1	18	16	X	20	20	4	X	X	X	X	X
892	1	18	16	X	20	20	4	X	X	X	X	X
893	1	18	16	X	20	20	4	X	X	X	X	X
894	1	18	16	X	20	20	4	X	X	X	X	X
895	1	18	16	X	20	20	4	X	X	X	X	X
896	1	18	16	X	20	20	4	X	X	X	X	X
897	1	18	16	X	20	20	4	X	X	X	X	X
898	1	18	16	X	20	20	4	X	X	X	X	X
899	1	18	16	X	20	20	4	X	X	X	X	X
900	1	18	16	X	20	20	4	X	X	X	X	X

Sample ID	Cu	Pb	Zn	Bi	As	Sb	Mo	W	Ag	Au	Al	Hg
A186 605	18	150	185	24	26	230	10	28	10	X	X	X
606	3	18	16	X	20	20	4	X	X	X	X	X
607	1	18	16	X	20	20	4	X	X	X	X	X
A272 629	14	11	70	11	55	110	10	7	10	X	X	X
630	3	18	16	X	20	20	4	X	X	X	X	X
631	1	18	16	X	20	20	4	X	X	X	X	X
632	1	18	16	X	20	20	4	X	X	X	X	X
633	1	18	16	X	20	20	4	X	X	X	X	X
634	1	18	16	X	20	20	4	X	X	X	X	X
635	1	18	16	X	20	20	4	X	X	X	X	X
636	1	18	16	X	20	20	4	X	X	X	X	X
637	1	18	16	X	20	20	4	X	X	X	X	X
638	1	18	16	X	20	20	4	X	X	X	X	X
639	1	18	16	X	20	20	4	X	X	X	X	X
640	1	18	16	X	20	20	4	X	X	X	X	X
641	1	18	16	X	20	20	4	X	X	X	X	X
642	1	18	16	X	20	20	4	X	X	X	X	X
643	1	18	16	X	20	20	4	X	X	X	X	X
644	1	18	16	X	20	20	4	X	X	X	X	X
645	1	18	16	X	20	20	4	X	X	X	X	X
646	1	18	16	X	20	20	4	X	X	X	X	X
647	1	18	16	X	20	20	4	X	X	X	X	X
648	1	18	16	X	20	20	4	X	X	X	X	X
649	1	18	16	X	20	20	4	X	X	X	X	X
650	1	18	16	X	20	20	4	X	X	X	X	X
651	1	18	16	X	20	20	4	X	X	X	X	X
652	1	18	16	X	20	20	4	X	X	X	X	X
653	1	18	16	X	20	20	4	X	X	X	X	X
654	1	18	16	X	20	20	4	X	X	X	X	X
655	1	18	16	X	20	20	4	X	X	X	X	X
656	1	18	16	X	20	20	4	X	X	X	X	X
657	1	18	16	X	20	20	4	X	X	X	X	X
658	1	18	16	X	20	20	4	X	X	X	X	X
659	1	18	16	X	20	20	4	X	X	X	X	X
660	1	18	16	X	20	20	4	X	X	X	X	X
661	1	18	16	X	20	20	4	X	X	X	X	X
662	1	18	16	X	20	20	4	X	X	X	X	X
663	1	18	16	X	20	20	4	X	X	X	X	X
664	1	18	16	X	20	20	4	X	X	X	X	X
665	1	18	16	X	20	20	4	X	X	X	X	X
666	1	18	16	X	20	20	4	X	X	X	X	X
667	1	18	16	X	20	20	4	X	X	X	X	X
668	1	18	16	X	20	20	4	X	X	X	X	X
669	1	18	16	X	20	20	4	X	X	X	X	X
670	1	18	16	X	20	20	4	X	X	X	X	X
671	1	18	16	X	20	20	4	X	X	X	X	X
672	1	18	16	X	20	20	4	X	X	X	X	X
673	1	18	16	X	20	20	4	X	X	X	X	X
674	1	18	16	X	20	20	4	X	X	X	X	X
675	1	18	16	X	20	20	4	X	X	X	X	X
676	1	18	16	X	20	20	4	X	X	X	X	X
677	1	18	16	X	20	20	4	X	X	X	X	X
678	1	18	16	X	20	20	4	X	X	X	X	X
679	1	18	16	X	20	20	4	X	X	X	X	X
680	1	18	16	X	20	20	4	X	X	X	X	X
681	1	18	16	X	20	20	4	X	X	X	X	X
682	1	18	16	X	20	20	4	X	X	X	X	X
683	1	18	16	X	20	20	4	X	X	X	X	X
684	1	18	16	X	20	20	4	X	X	X	X	X
685	1	18	16	X	20	20	4	X	X	X	X	X
686	1	18	16	X	20	20	4	X	X	X	X	X
687	1	18	16	X	20	20	4	X	X	X	X	X
688	1	18	16	X	20	20	4	X	X	X	X	X
689	1	18	16	X	20	20	4	X	X	X	X	X
690	1	18	16	X	20	20	4	X	X	X	X	X
691	1	18	16	X	20	20	4	X	X	X	X	X
692	1	18	16	X	20	20	4	X	X	X	X	X
693	1	18	16	X	20	20	4	X	X	X	X	X
694	1	18	16	X	20	20	4	X	X	X	X	X
695	1	18	16	X	20	20	4	X	X	X	X	X
696	1	18	16	X	20	20	4	X	X	X	X	X
697	1	18	16	X	20	20	4	X	X	X	X	X
698	1	18	16	X	20	20	4	X	X	X	X	X
699	1	18	16	X	20	20	4	X	X	X	X	X
700	1	18	16	X	20	20	4	X	X	X	X	X

02\_4819

Tasmania - Regional Bulk Sampling - Inter-Office Memorandum  
CSR Limited  
Eliis, P.D.



Bulk only  
Au, Ag, Cu, Pb, Zn, Bi, As, Sb, Mo, W, Ag, Au, Al, Hg

RIVER	INGLIS	FORTH</
-------	--------	---------