

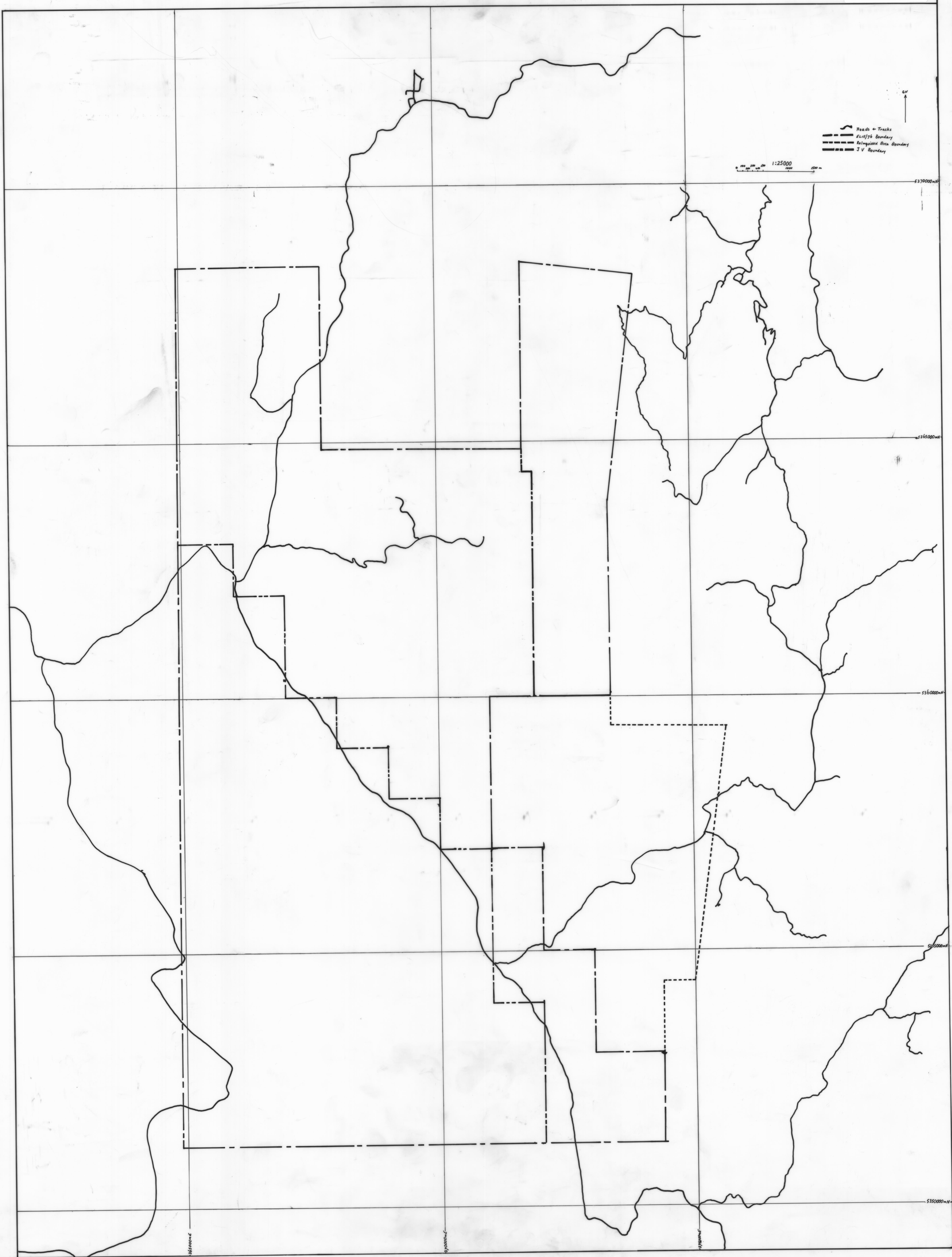
93064

7602-185
EL1576 DUNDAS
BASE PLAN
1:25000

02_4820

Peat Exploration within the area of EL 151976 -
Dundas
CSR Limited
Elna, P.D. EL151976

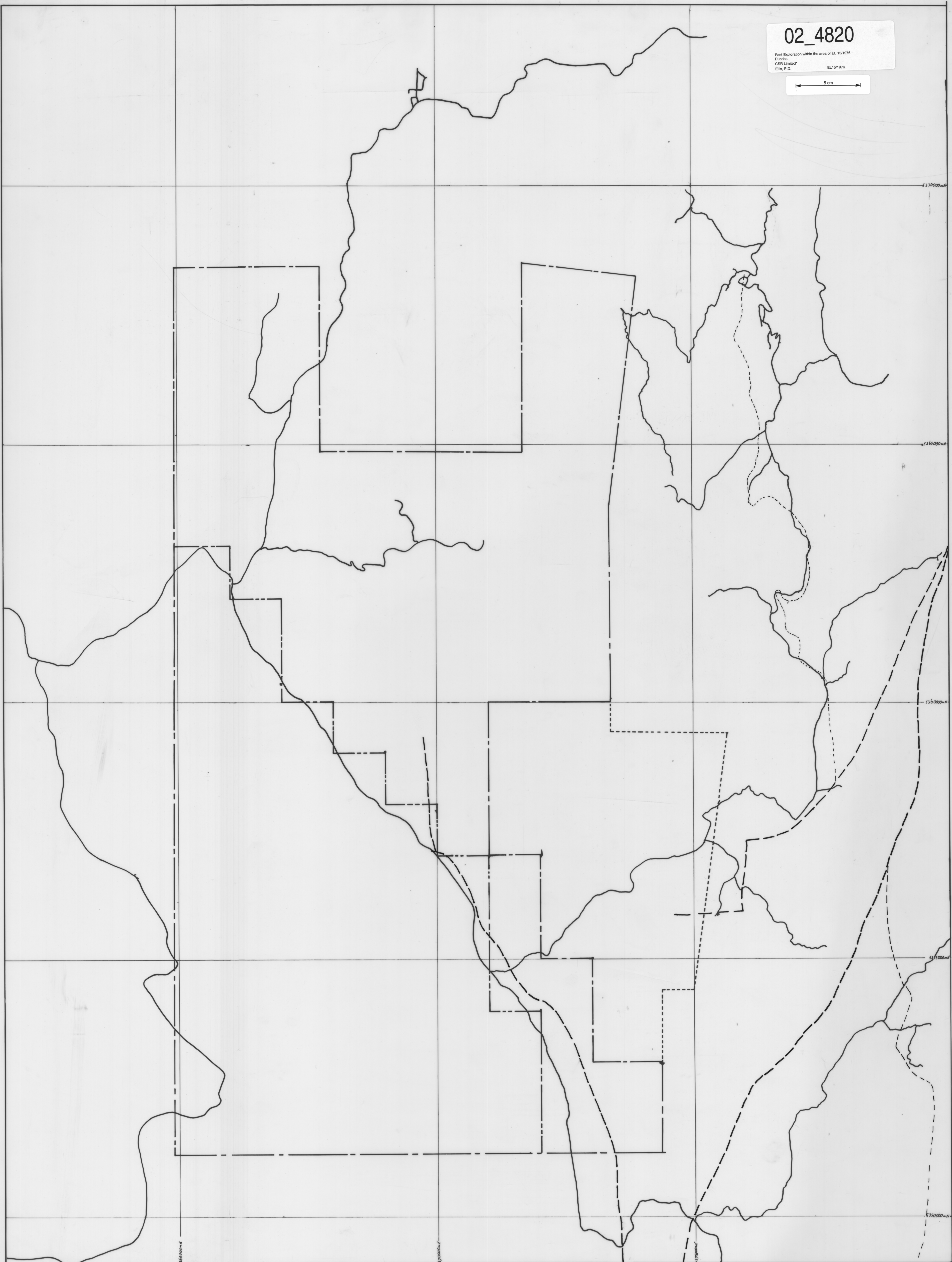
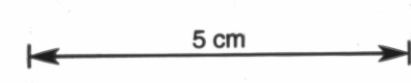
5 cm

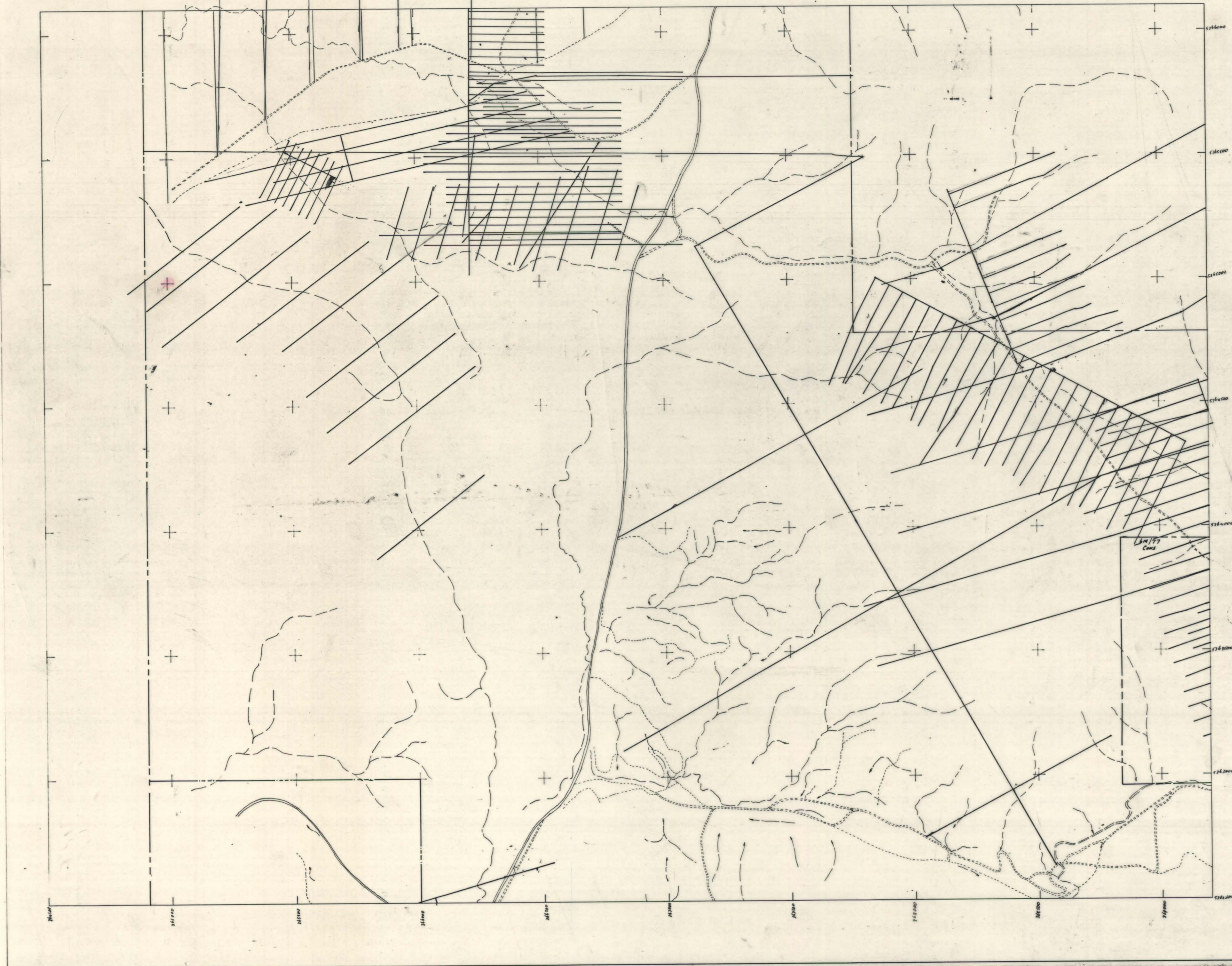


02_4820

Past Exploration within the area of EL 15/1979 -
Cairns
CSR Limited
Elli, P.D.

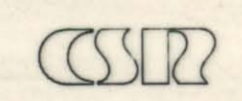
EL15/1979





- Roads
- Tracks
- Walking Tracks
- Rivers
- Streams
- Grid Line
- Lease Boundary
- Salt Water Area
- Mining Lease Number

SCALE 1:1000



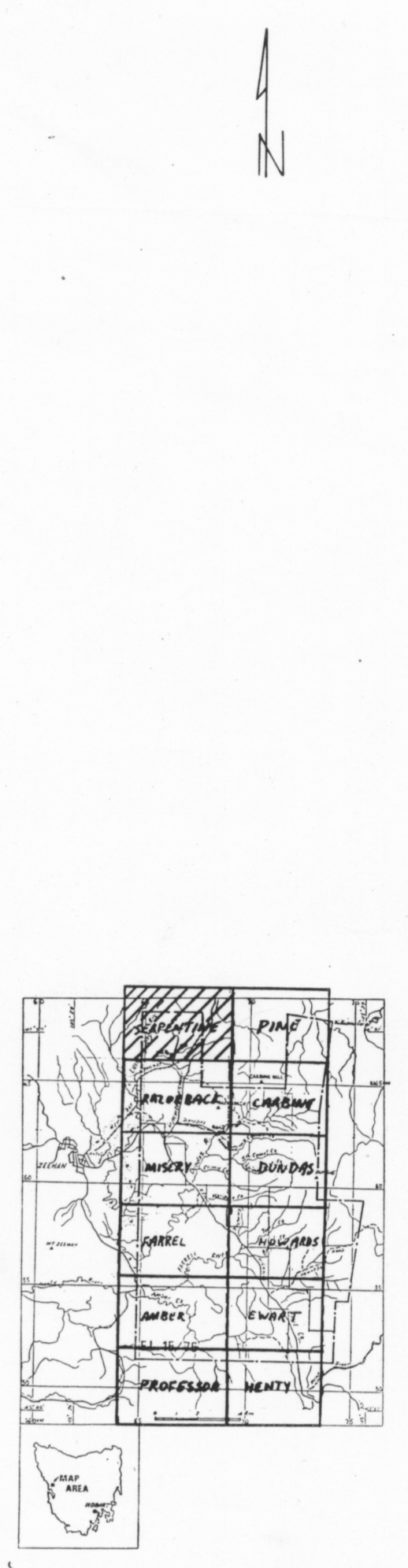
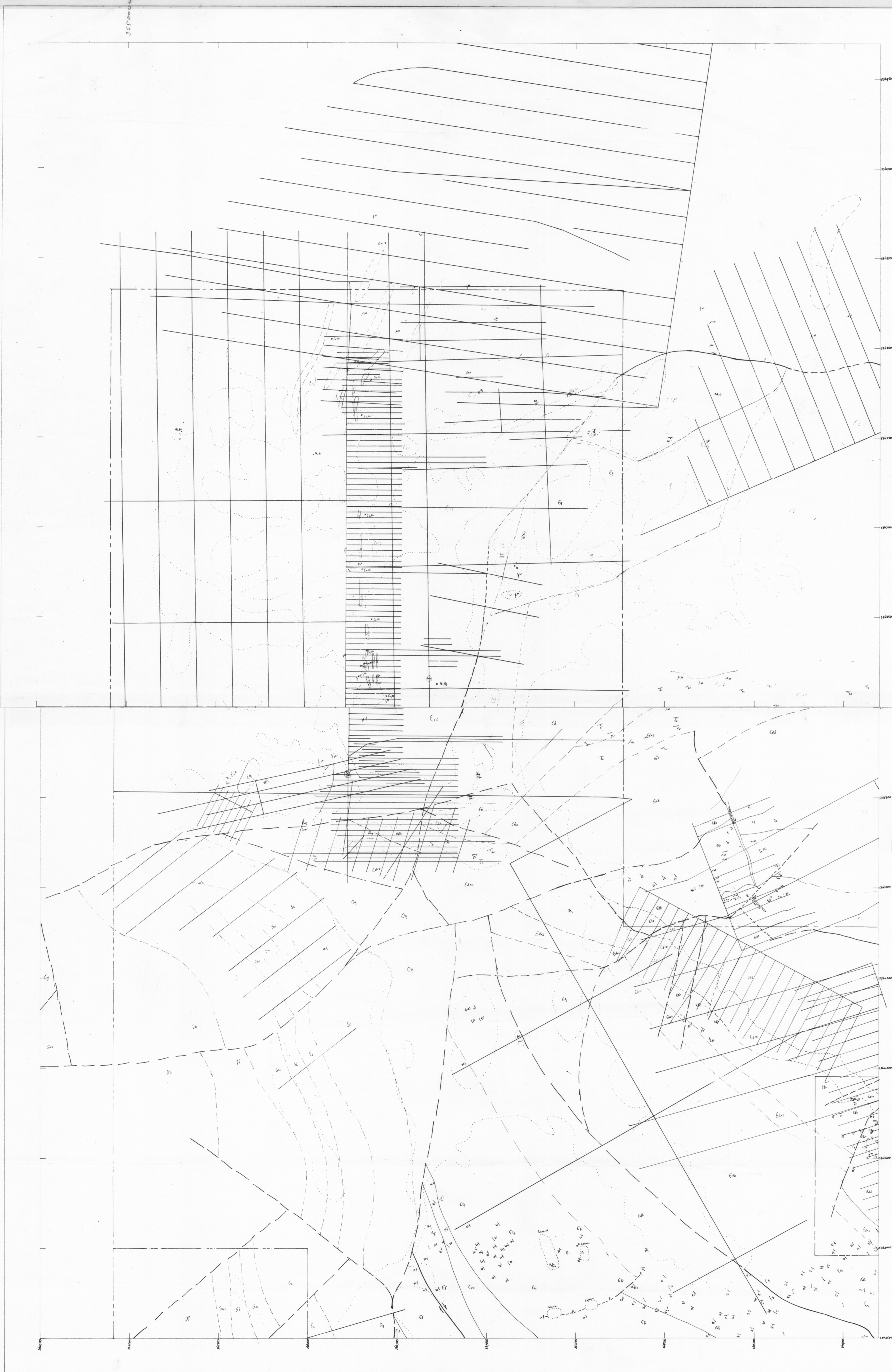
CSR LIMITED - AM & C DIVISION	
EL 15/76	DUNDAS
RAZORBACK	
DATE:	22-JUN-85 PLAN NO. 7602-10

5 cm

02_4820
 Past Exploration within the area of EL 15/1976 -
 Dundas
 CSR Limited*
 Ellis, P.D. EL15/1976

930672

930673

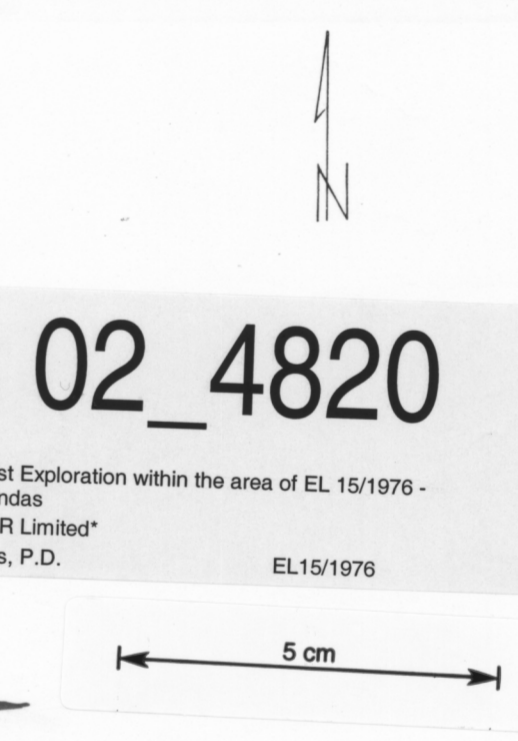


0.0 0.1 0.2 0.3 0.4 0.5 km
SCALE 1:5000



CSR LIMITED
MINERALS EXPLORATION & DEVELOPMENT GROUP

CSR LIMITED - MEDG
SERPENTINE
GEOLOGICAL INTERPRETATION



0.0 0.1 0.2 0.3 0.4 0.5 km
SCALE 1:5000



CSR LIMITED
MINERALS EXPLORATION & DEVELOPMENT GROUP

CSR LIMITED - MEDG
RAZORBACK
GEOLOGICAL INTERPRETATION

SCALE 1:15000
DATE 15-JUL-85
DRAWN

DWG No.

DATE

REVISION

DATE

REVISION

DATE

REVISION

DATE

REVISION

DATE

REVISION

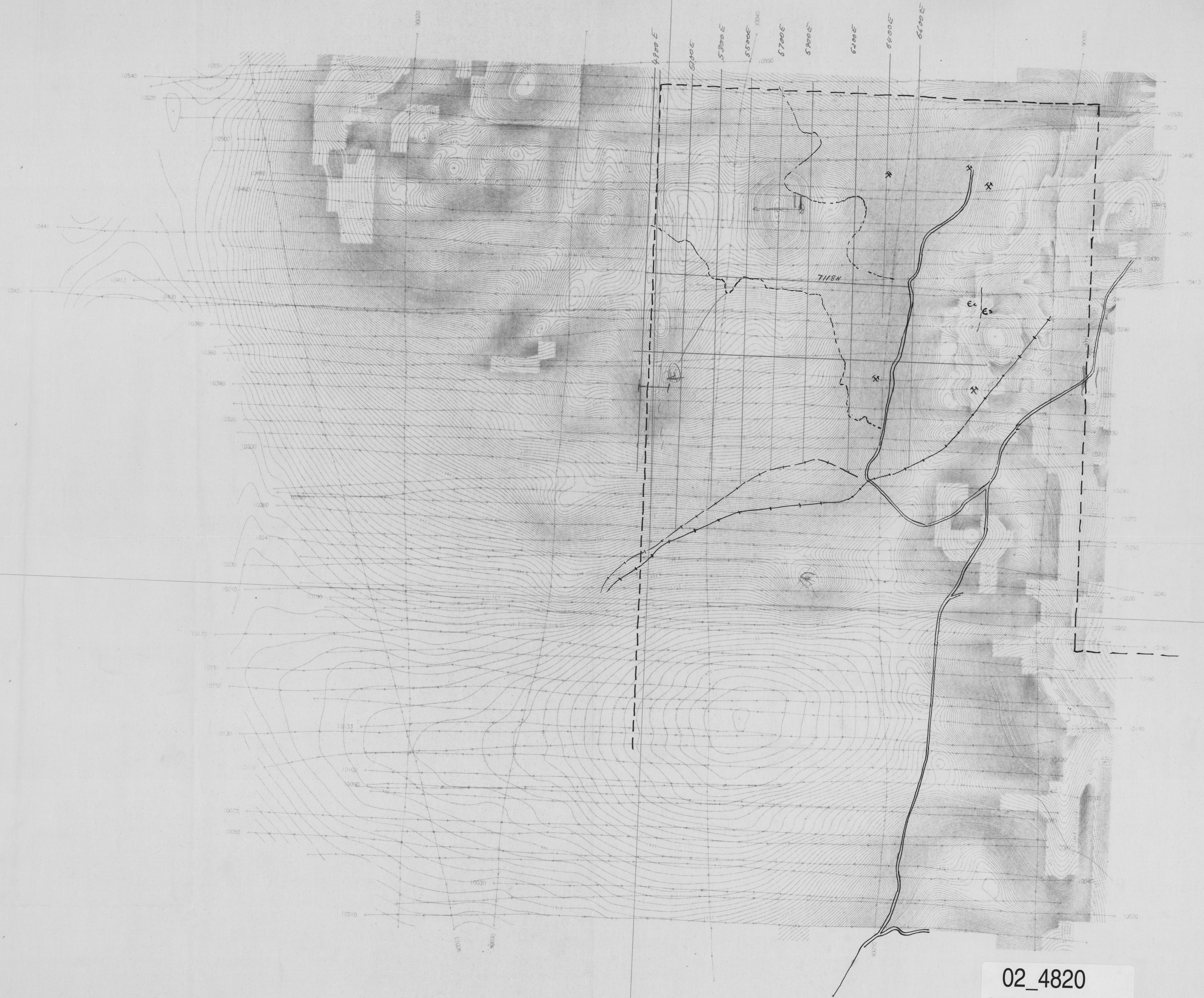
DATE

REVISION

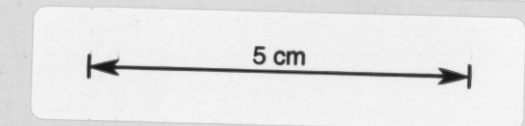
DATE

REVISION

DATE



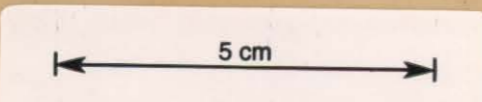
02_4820
Past Exploration within the area of EL 15/1976 -
Dundas
CSR Limited
Elix, P.D. EL15/1976



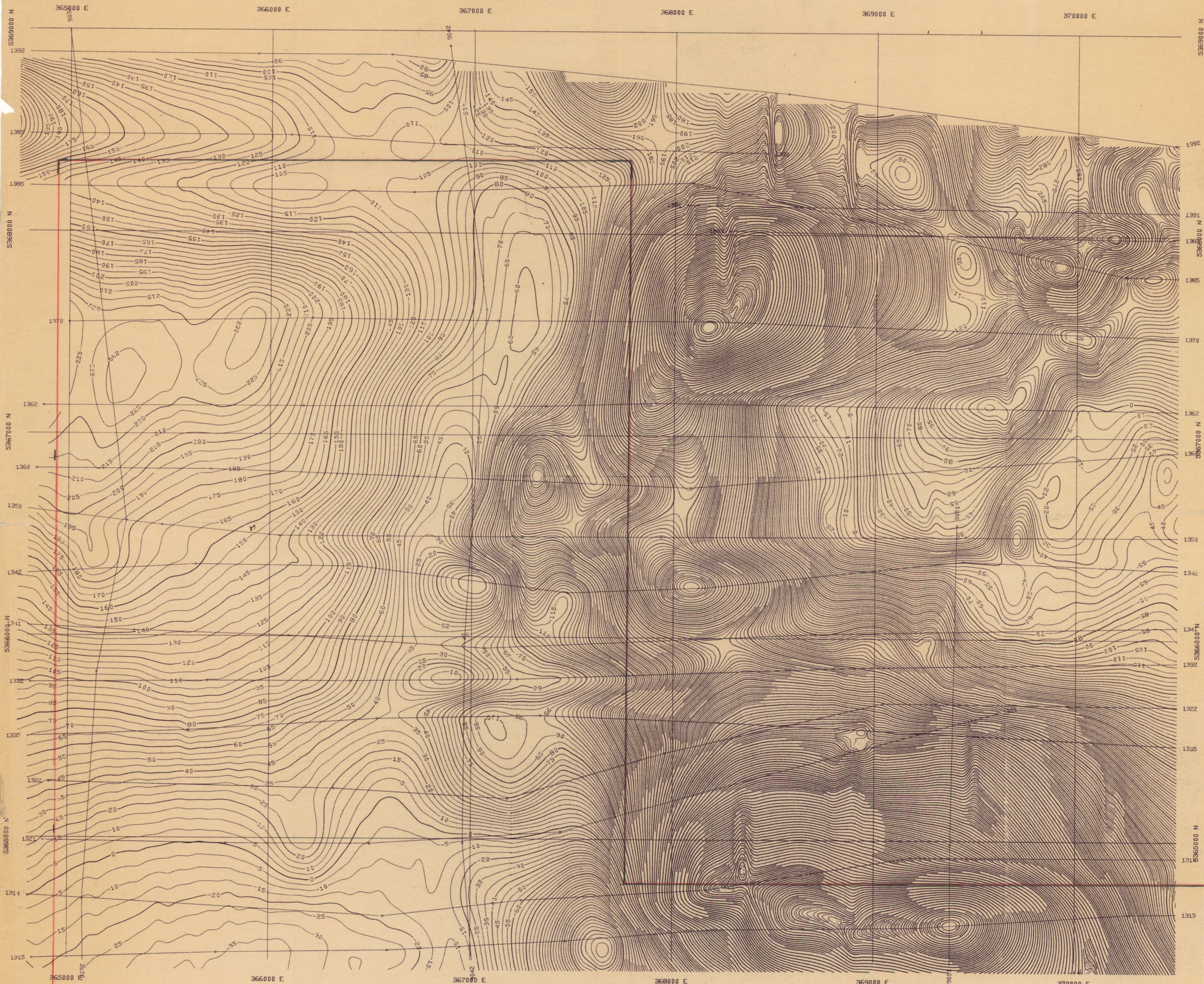
(20m - 70m = 60m)

93078

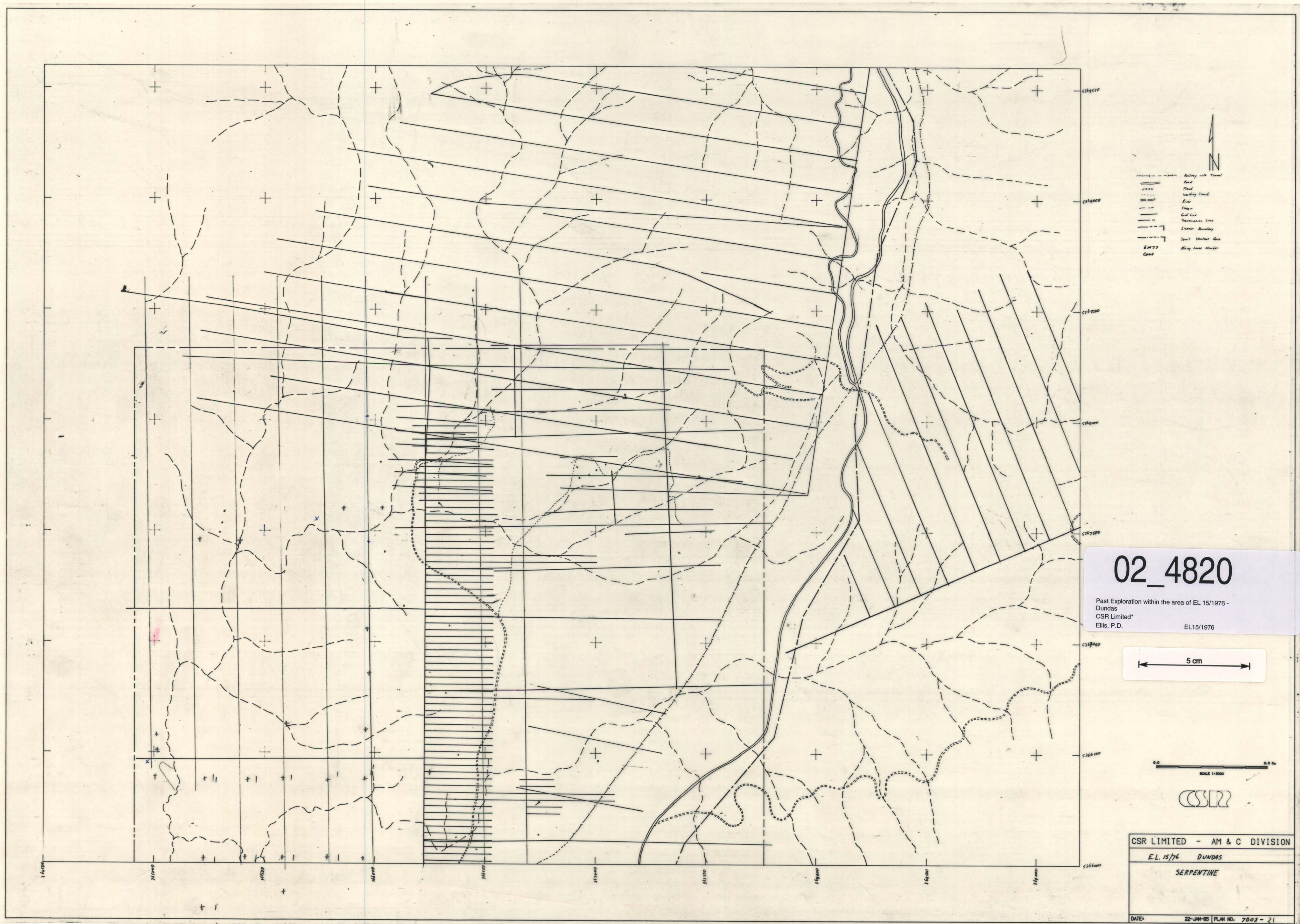
930677



02_4820
Past Exploration within the area of EL 15/1976 -
Dundas
CSR Limited
Ellis, P.D. EL15/1976



John Pitt
182



02_4820
 Past Exploration within the area of EL 15/1976 -
 Dundas
 CSR Limited*
 Ellis, P.D. EL15/1976

5 cm

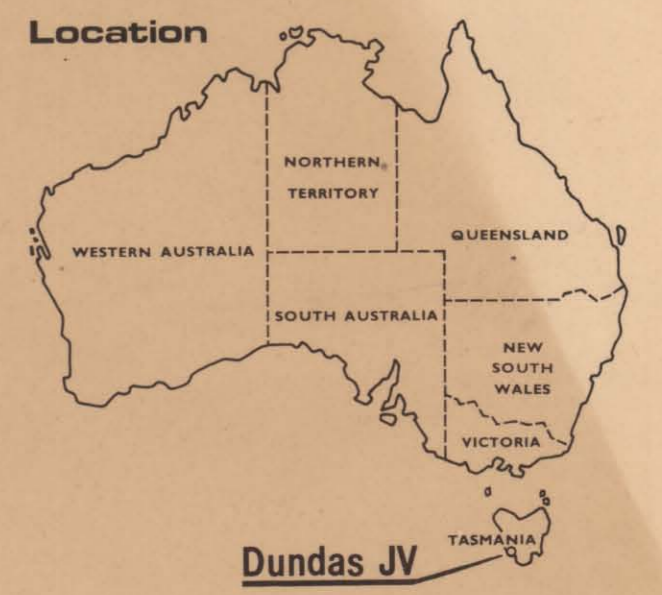
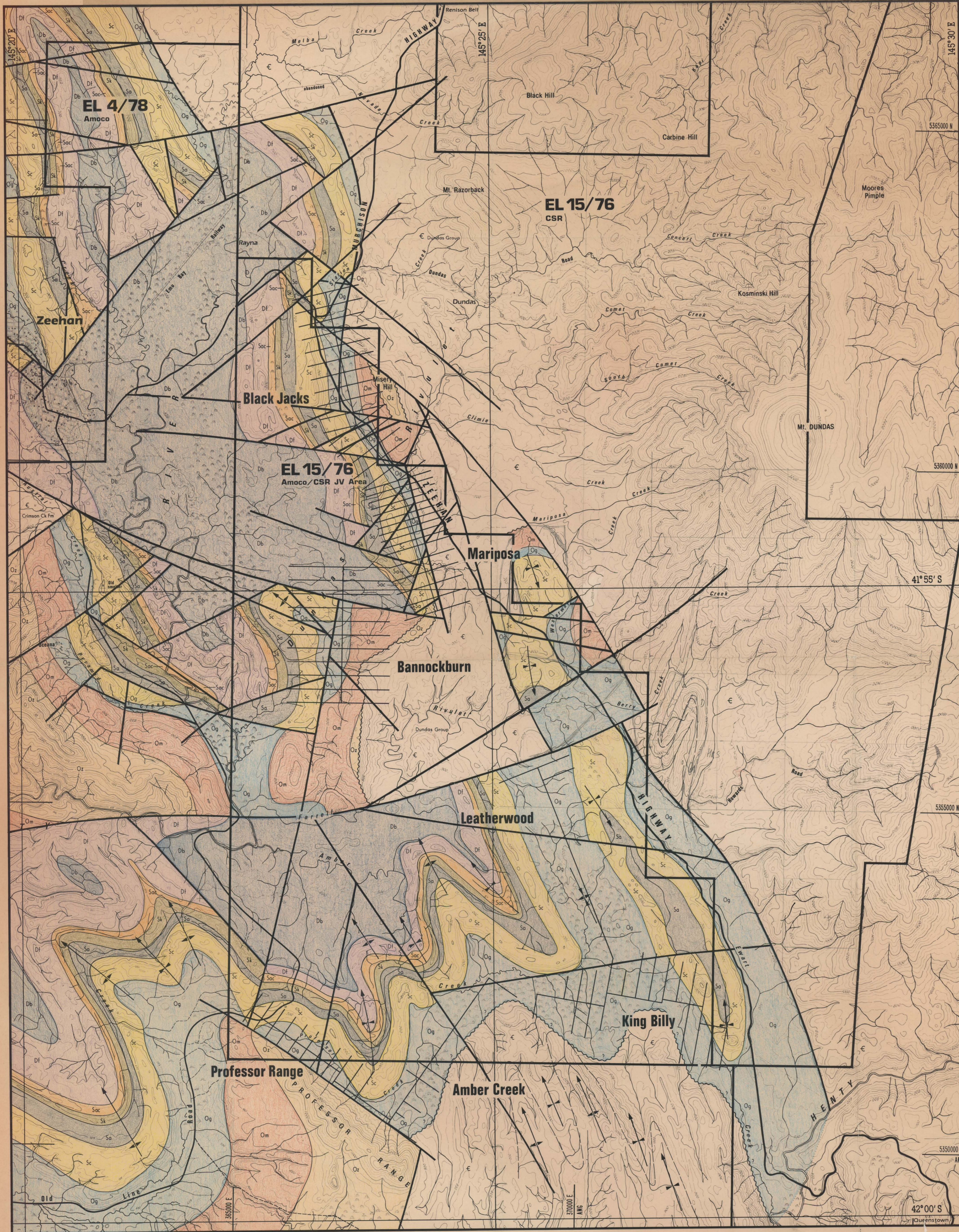
0.5 0.5 km
 SCALE 1:1000



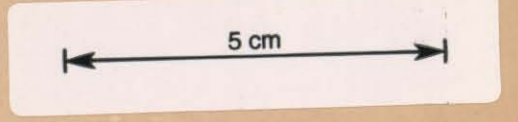
CSR LIMITED - AM & C DIVISION
 E.L. 15/76 DUNDAS
 SERPENTINE
 DATE: 22-JUN-85 PLAN NO. 7002 - 21

930678

930674

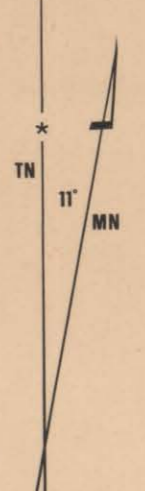


02_4820
 Past Exploration within the area of EL 15/1976 - Dundas
 CSR Limited*
 Ellis, P.D. EL15/1976



Legend

Devonian	
Bell Shale	Db 35
Florence Quartzite	Df 25
Silurian	
Austral Creek Siltstone	Sac 9
Keel Quartzite	Sk 33
Amber Slate	Sa 48
Crofty Quartzite	Sc 55
Ordovician	
Gordon Limestone	Og 33
Moira Sandstone	Om 54
Mt Zeehan Conglomerate	Oz 58
Cambrian	
Undifferentiated Cambrian Units	C
Geologic Boundary	
Fault	
Unconformity	
Anticline	
Syncline	



1:25000

Base compiled from 1:15840 scale Pieman Project mapping series
 Topographic contours in feet



Amoco Minerals Australia Company

Project	GORDON RIVER N° A-80-82		
Project Partner	CSR		
Dundas JV	Part EL 15/76		
PROSPECT LOCATION AND GEOLOGY			
Map Ref.	ANG	K-55-5	Latitude 42°00' S Longitude 145°30' E
Surveyed	Amoco	Date	1983 Scale 1:25000
Drawn	Geod. R.S.-K., S.F.	Date	June 1983 Drawing N° M83-2069
Report	376		