

CONTRACTOR TREATMENT RECORD

Weed Management

Contractor: P&C Vegetation Control

Treatment Date: 22-Dec-04

Location description (and provide map): Howards Rd Spur to Henty Gorge - Zinifex

Treatment Details

Weeds treated (Use botanical name if known)	Growth Stage	Treatment & application method (eg. Herbicide & wetter, boom spray, spot spray, wiper)	Rates Used	% Weed infestation treated
Gorse <i>Ulex europaeus</i>	Flowering	Spot spray, handgun Grazon DS Pulse Supa Stik RM	1L per 200L 200mL per 200L 400mL per 200L	

ENVIRONMENTAL CONDITIONS:

Soil Moisture: WET MOIST DRY VERY DRY

Weather Conditions: SUNNY LIGHT CLOUD

Wind: NIL LIGHT MODERATE

Maximum Daily Temperature: 23 **Minimum Nightly Temperature:**

Further Comments: Found resonably sized isolated areas of Gorse

CONTRACTOR TREATMENT RECORD

Weed Management

Contractor: P&C Vegetation Control

Treatment Date: 23-Nov-04

Location description (and provide map):

Howards Rd Spur to Henty Gorge - Zinifex

Treatment Details

Weeds treated (Use botanical name if known)	Growth Stage	Treatment & application method (eg. Herbicide & wetter, boom spray, spot spray, wiper)	Rates Used	% Weed infestation treated
Gorse <i>Ulex europaeus</i>	Just Flowering	Spot spray, handgun Grazon DS Pulse Supa Stik RM SprayMarker Dye	1.5L per 300L 300mL per 300L 600mL per 300L 100mL per 300L	

ENVIRONMENTAL CONDITIONS:

Soil Moisture: WET

MOIST

DRY

VERY DRY

Weather Conditions:

SUNNY

LIGHT CLOUD

Wind:

NIL

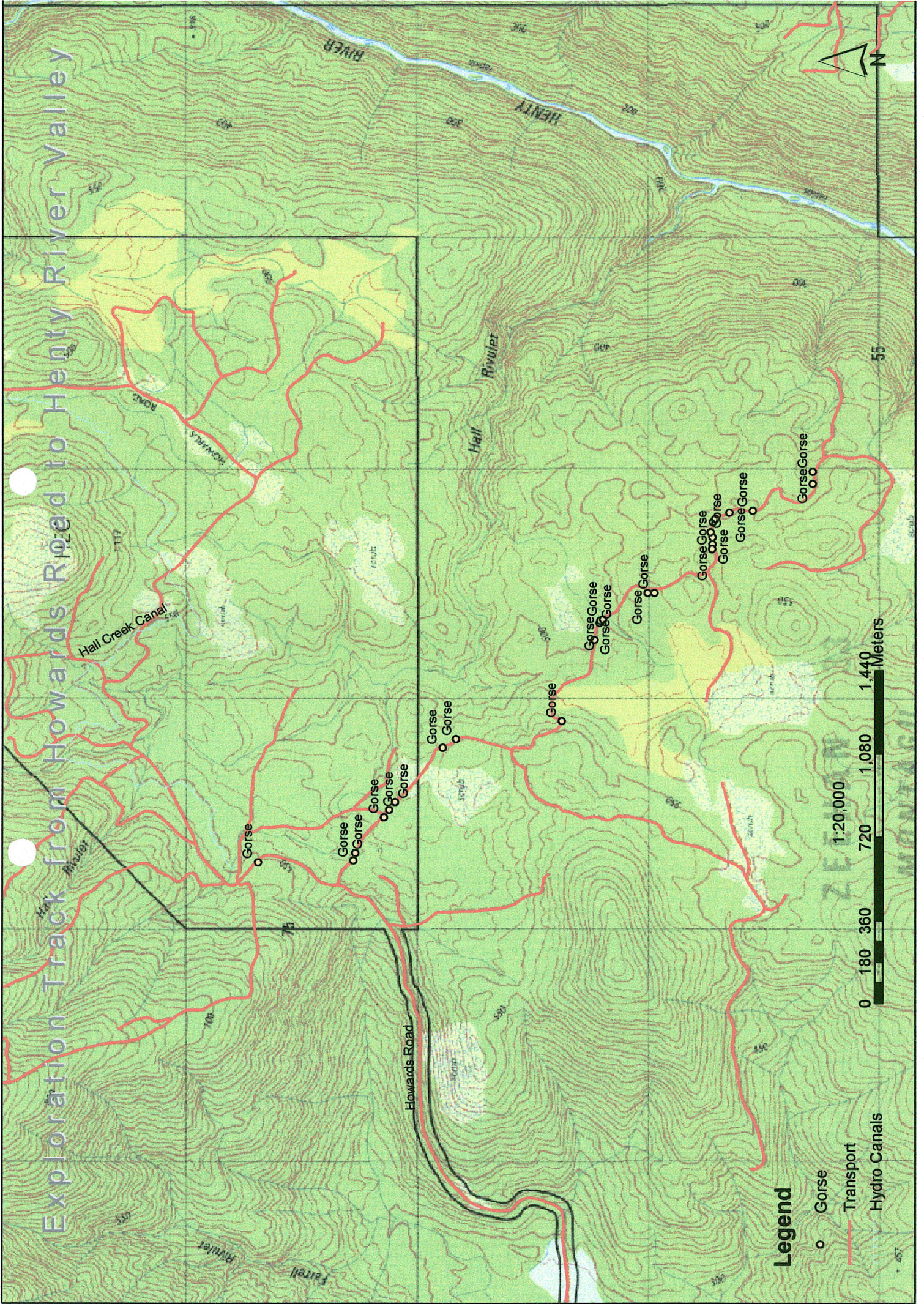
LIGHT

MODERATE

Maximum Daily Temperature: 18

Minimum Nightly Temperature:

Further Comments: Remainder needs to be sprayed with an ATV.



Exploration Track from Howards Road to Henty River Valley

Legend

- Gorse
- Transport
- Hydro Canals