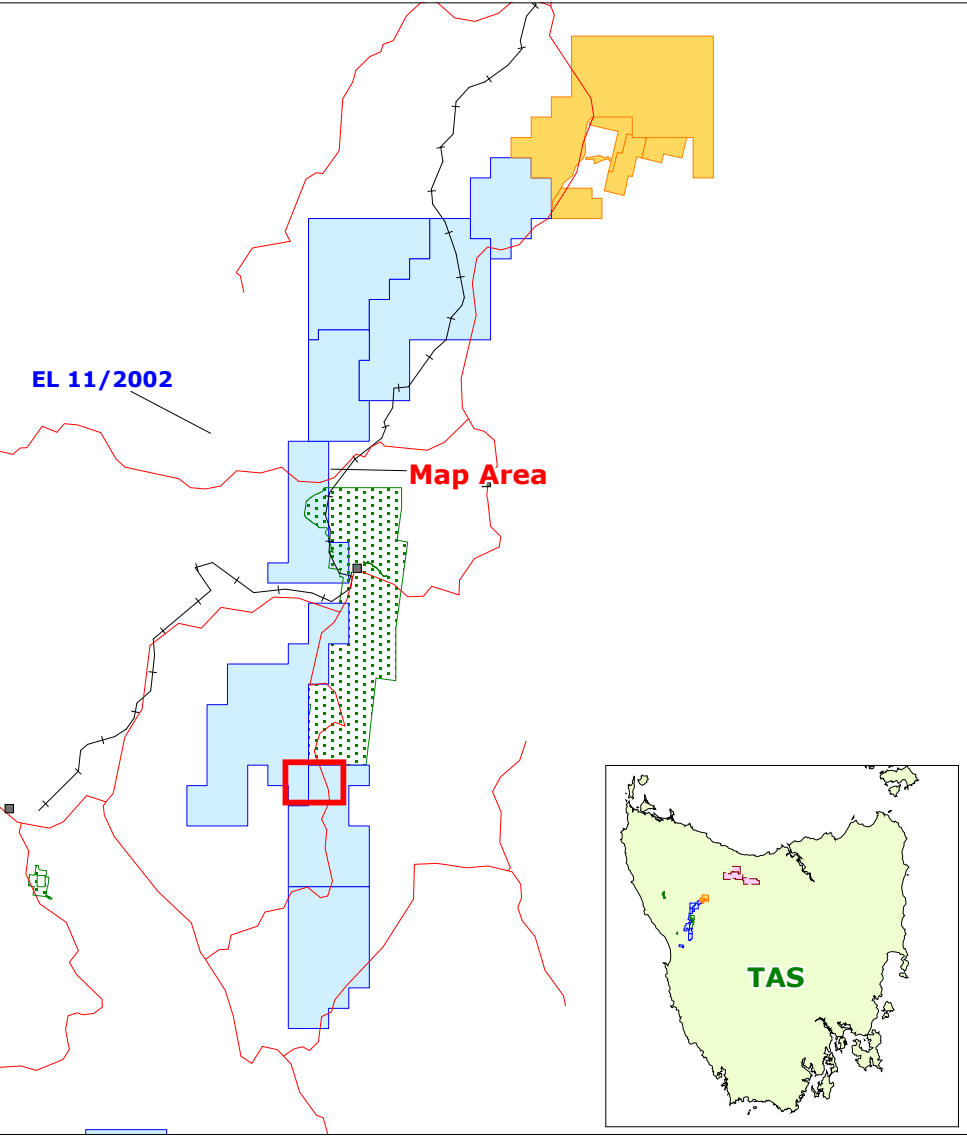


LEGEND

- Qg - Quaternary glacial and fluviglacial deposits.
- Ewsp - Massive, pumiceous sandstone with feldspar >>quartz phenocrysts. (White Spur Formation)
- Ewms - Interbedded micaceous sandstone, shale and greywacke. Some with appreciable volcanogenic component. (White Spur Formation)
- Ewsh - Dominantly black shale/siltstone. (White Spur Formation)
- Ewvs - Dominantly volcanisclastic 'shard-rich' siltstones. (White Spur Formation)
- Ewss - Dominantly feldspar > quartz - phryic volcanisclastic sandstones with lesser volcanisclastic siltstones and breccia units (particularly immediately overlying Ecvc). (White Spur Formation)
- Ecvc - Massive feldspar-phryic pumice breccia and minor lavas. (Central volcanic Complex)
- Geological boundary
- Geological boundary - inferred
- Fault
- Limits of mapped area
- Bedding
- Abandoned workings
- Drillhole Collar and Trace



ZINIFEX LIMITED

EL 11/2002 Dundas (Williamsford) White Spur Area

Interpreted Geology

Date: 9/3/2005
Author: A. McNeill
Drawn: CAW
Ref: ZIN_05_0309

Projection: AMG Zone 55 (AGD66) Plan: 2

Produced by:

0 150 300 metres