

**COMINEX PTY LTD**  
P.O.Box 77, Sorell  
Tasmania 7172  
**SUMITOMO AUSTRALIA LTD**  
GPO Box 4241, Sydney  
NSW 2001

**EL61/94 ARTHUR RIVER  
ANNUAL REPORT TO 9<sup>th</sup> June, 2007  
& FINAL REPORT**

Volume 1 of 1

Prepared by N. J. Turner Geological Services Pty Ltd  
65 Lochner St, West Hobart, Tasmania 7000

13<sup>th</sup> July, 2007

## CONTENTS

	Page
1. Summary	2
2. Introduction	2
3. Previous work	2
4. Work in the final period	2
5. Results and conclusions	2
6. Environmental matters	3
7. References	3

### LIST OF APPENDICES

Appendix 1 Test pit logs

### LIST OF FIGURES

Figure 1 Tenement locality map.

Figure 2 Geology and test pit locations

## **1. Summary**

- Seven test pits were dug in the country west of Blackwater Road.
- Poor quality silica flour was found in test pit ATP74.
- The test pitting indicated that silica flour deposits in this locality would be thin.
- No further work was recommended

## **2. Introduction**

EL61/94 was situated in the Arthur River district in north western Tasmania. During its life the tenement was reduced in area from 23km<sup>2</sup> to the 1km<sup>2</sup> block that is the subject of this report. This last part of the tenement straddled the Blackwater Road about 7 km south of the Kanunnah Bridge, in the vicinity of the turn-off to the Blackwater Number 6 Spur Road (Figure 1).

Extensions of the term of EL61/94 were granted in 2005 and 2006 in order to allow the assessment of occurrences of silica flour that were recognized late in the tenure of the licence. The exploration licence expired on 9.6.07. In 2005 part of EL61/94 was converted to Retention Licence 2/2005, which remains current at the present time.

## **3. Previous work**

Cominex Pty Ltd's interest throughout the term of EL61/94 has been in the potential for the ground to contain a significant silica flour resource. Geological mapping culminated in rounds of auger drilling that delineated a resource of probably commercial silica flour in the area that is now RL2/2005.

Silica flour had been identified in cuttings on the Blackwater Road near Spur 6 and the area was retained when EL61/94 was reduced in size (Turner, 2000). Subsequent geological mapping identified silica flour in the country west of Blackwater Road (Turner, 2006).

## **4. Work in the final period**

Work in the final period targeted the occurrences of silica flour west of Blackwater Road. A minimal track was driven west from the road using a 14 tonne excavator and a series of seven test pits were dug (Figure 2).

## **5. Results and conclusions**

Logs of the test pits are presented in Appendix 1. In test pits ATP70, 71, 75 and 76 Tertiary deposits proved too thick to penetrate. Bedrock was encountered in

ATP72 and 73 while silica flour was encountered in ATP74. It is likely that silica flour is present beneath the Tertiary deposits in ATP75 and 76, but the poor quality of the material in ATP74 combined with the indicated thinness of the silica flour deposits in this locality does not encourage further work.

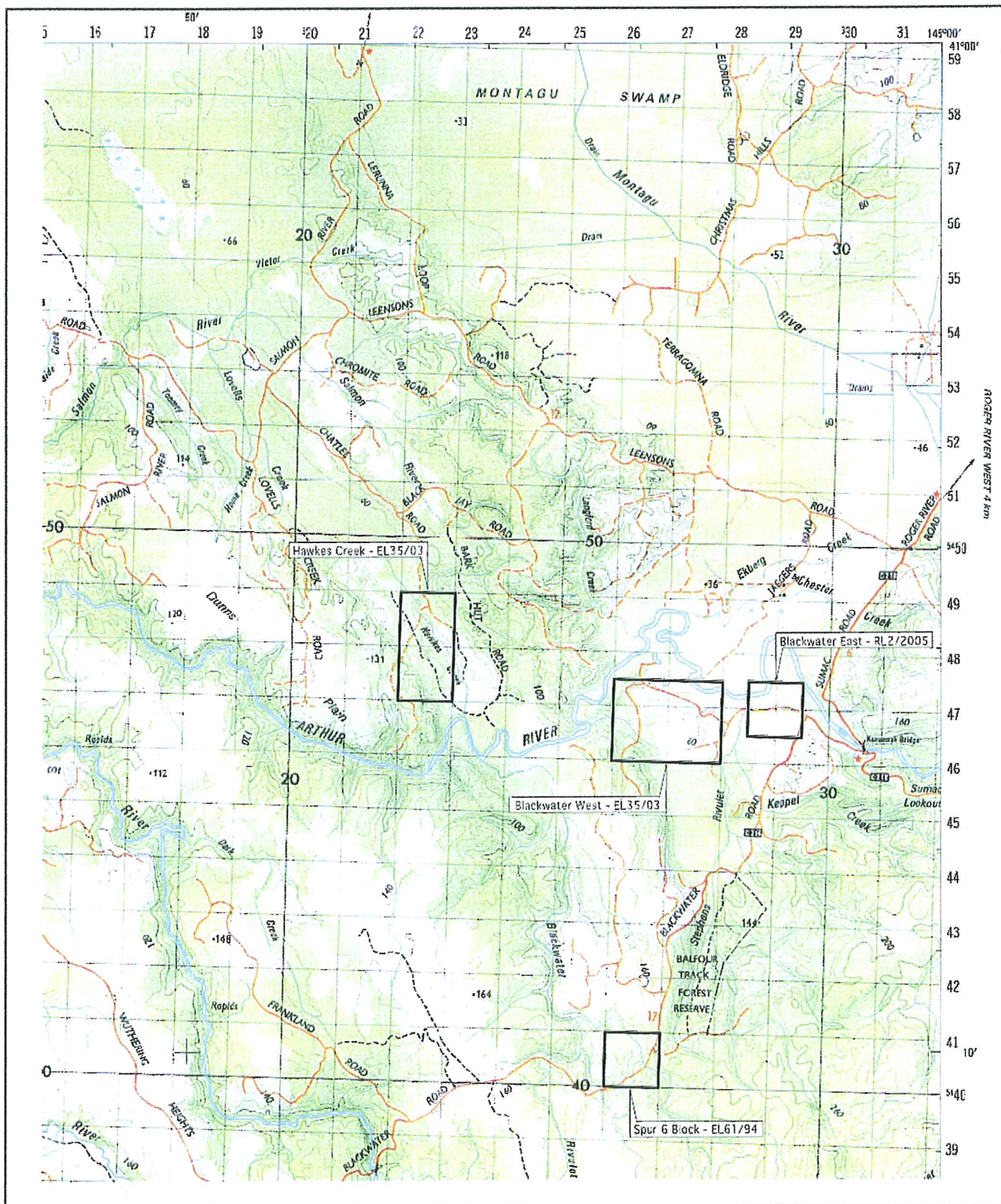
## **6. Environmental matters**

All test pits were immediately rehabilitated after logging and sampling. The humus layer and soil horizon along the excavator track remain substantially intact and the route is expected to revegetate without further work.

## **7. References**

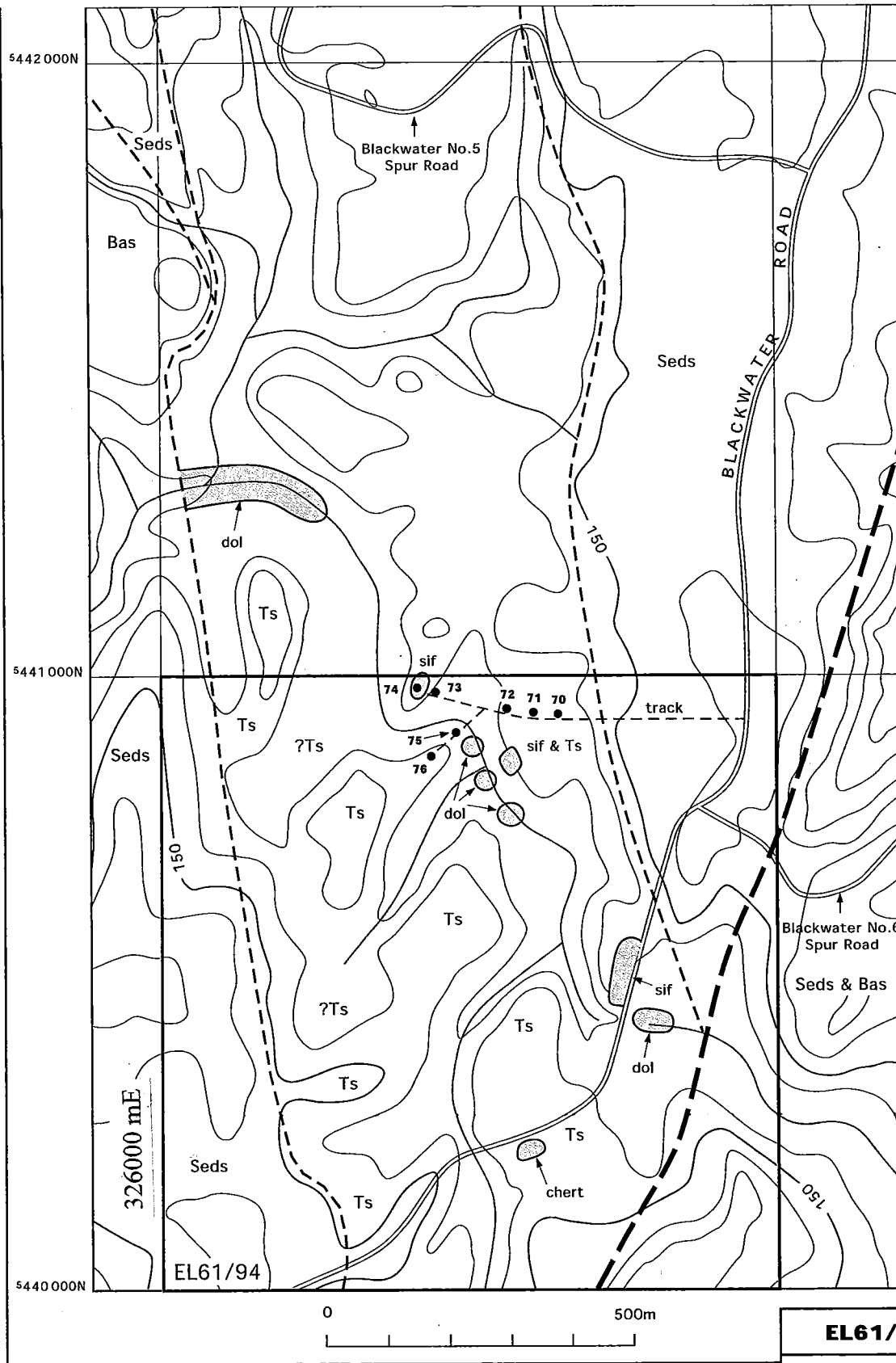
Turner N. J. 2000. EL61/94 Arthur River. Partial relinquishment at 9.6.2000. Cominex Pty Ltd.

Turner N. J. 2006. EL61/94 Arthur River. Annual report to 9.6.2006. Cominex Pty Ltd.



The base map is portion of the Nelson Bay 1:100,000 sheet, Land Information Services, Tasmania.

Figure 1: Locality map of Cominex Pty Ltd's tenements in the Arthur River district, north west Tasmania, as at 7.12.2006.



- Ts Tertiary gravel, sand and carbonaceous siltstone
- sif Silica flour
- dol Smithton Dolomite
- Seds Neoproterozoic sedimentary rocks
- Bas Neoproterozoic basalt
- - - Geological boundary
- — Geological fault
- Test pit with number

<b>EL61/94 ARTHUR RIVER</b>	
<b>COMINEX PTY LTD</b>	
<b>Spur 6 Block</b>  Geology and Test Pits  Geology partly after MRT Sumac 1: 25 000	8.12.2006
	Compiled by Nic Turner
	Drawn by Ray Carroll
Scale 1: 10000 (at A4)	
<b>N J Turner Geological Services Pty Ltd</b>	
<b>Figure 2</b>	

COMINEX PTY LTD

13<sup>th</sup> July, 2007

EL61/94 Arthur River. Annual Report to 9/6/07

**Appendix 1: Spur 6 Block, test pit logs.**

The test pits were dug with a 14 tonne excavator.

Hole Number	AMG Easting (m)	AMG Northing (m)	Depth Interval (m)	Comment
ATP70/06	326647	5440940	0-2.7	Tertiary deposits. Gravel of rounded and angular, milky vein quartz and dark grey chert. Underlain by dark brown, pebbly, coarse grained sand and fissile, clayey, weakly indurated silt.
ATP71/06	326605	5440942	0-2.9	0.7 m of humus underlain by Tertiary gravel and minor sand.
ATP72/06	326560	5440950	0-3.4	0.5 m of humus underlain by 1.5 m of Tertiary gravel, followed by strongly weathered, orange, clayey siltstone.
ATP73/06	326447	5440975	0-1.5	0.4 m of humus underlain by 0.6 m of Tertiary gravel, followed by short jointed, pale grey and cream, siliceous rock that is similar to lump silica at Blackwater West.
ATP74/06	326415	5440985	0-2.7	0.5 m of humus over very pale brown, coarse grained, gritty, sandy silica flour. Contains abundant lump of indurated, massive, granular silica. Lump comprised about 60% of the excavated material. A sample of the flour was returned to the shed at the Corinna Silica Mine.
ATP75/06	326480	5440910	0-3.6	0.9 m of humus over Tertiary gravel.
ATP76A/06	326440	5440872	0-3.6	0.6 m of humus underlain by 2.4 m of coarse Tertiary gravel, followed by black and brown, organic-rich clay.