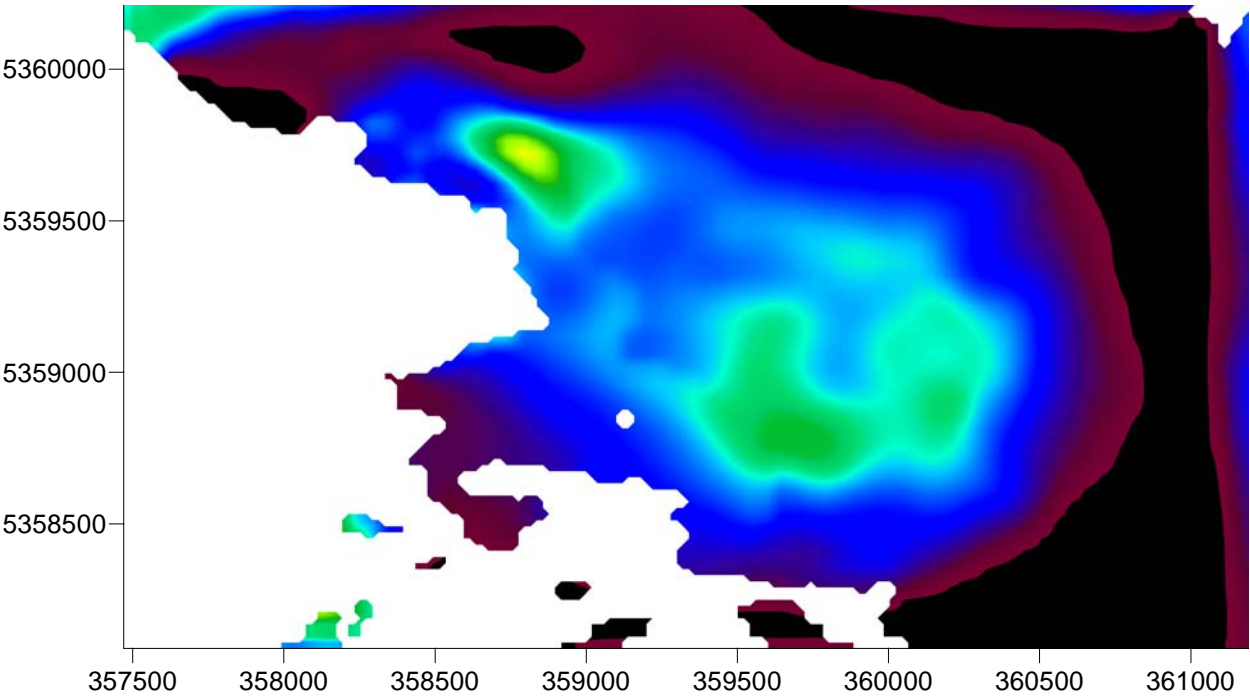
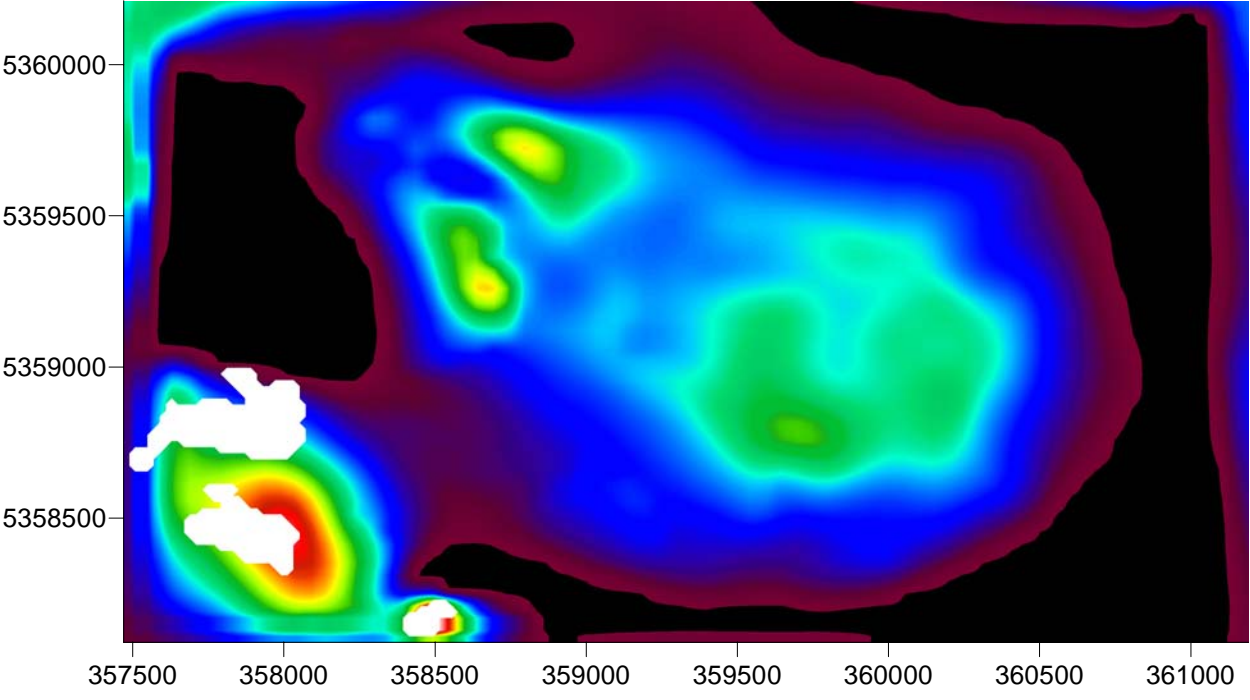


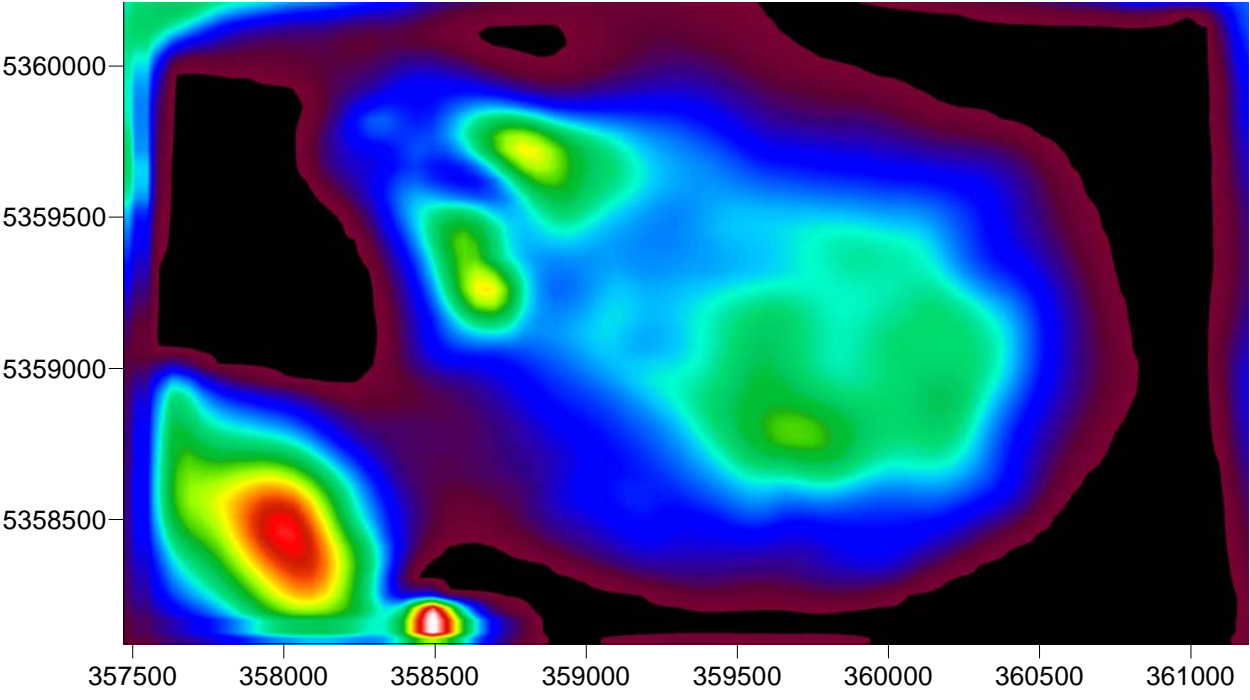
Plan at 225 m



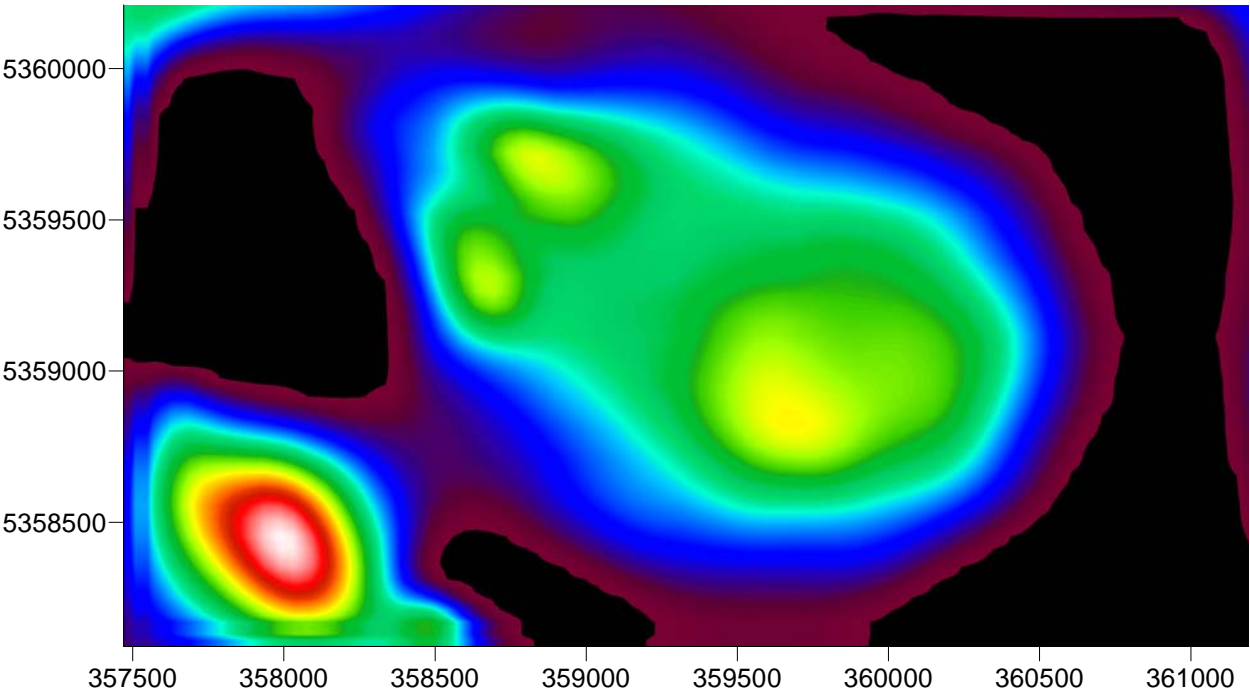
Plan at 205 m



Plan at 185 m



Plan at 165 m



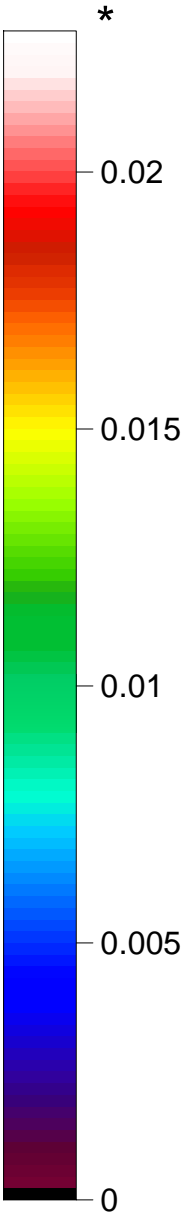
**SURVEY SPECIFICATIONS**

Contractor : GPX Airborne Pty Ltd  
Date : June 2007  
Survey type : Airborne Magnetic  
Line Direction : 000-180  
Line Spacing : 50/75 m  
Ground Clearance : 30 m  
Resolution : 0.001 nT

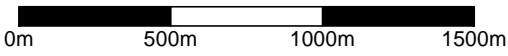
**MODEL SPECIFICATIONS**

Type : UBC V4 3D Magnetic Inversion  
Data : 10 x 10 m Grid of TMI  
Model Cell Size : 50 x 50 x 25 m  
Data Error : 0.5%  
Error Floor : 20 nT  
Regional Field : 100 nT  
Refined Cell Size : 20 x 20 x 10 m

\*Colour shows values of  
magnetic suceptibility (inverted)



**SOUTHERN GEOSCIENCE CONSULTANTS  
PTY LTD - ACN 067 552 461**



Scale 1:25000  
DATUM: GDA94  
GRID: MGA ZONE 55

**STONEHENGE METALS LIMITED**

**STONEHENGE PROSPECT**

Depth Slices of  
Inverted Magnetic Data