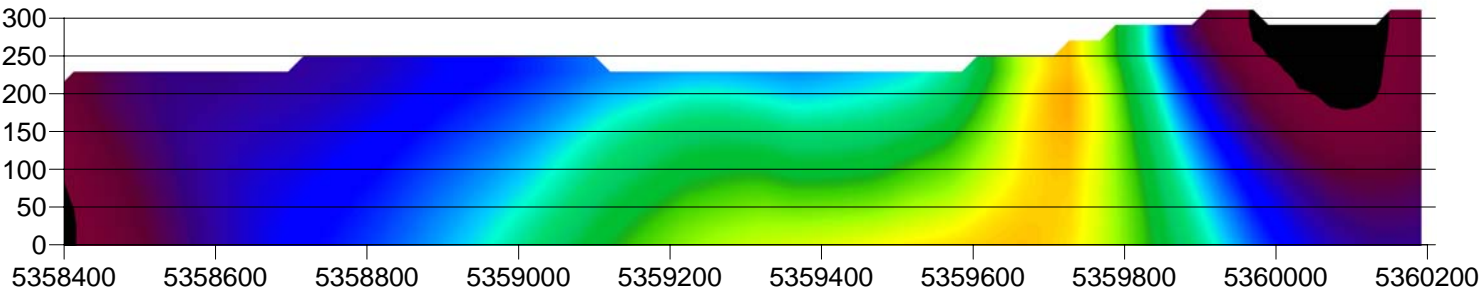
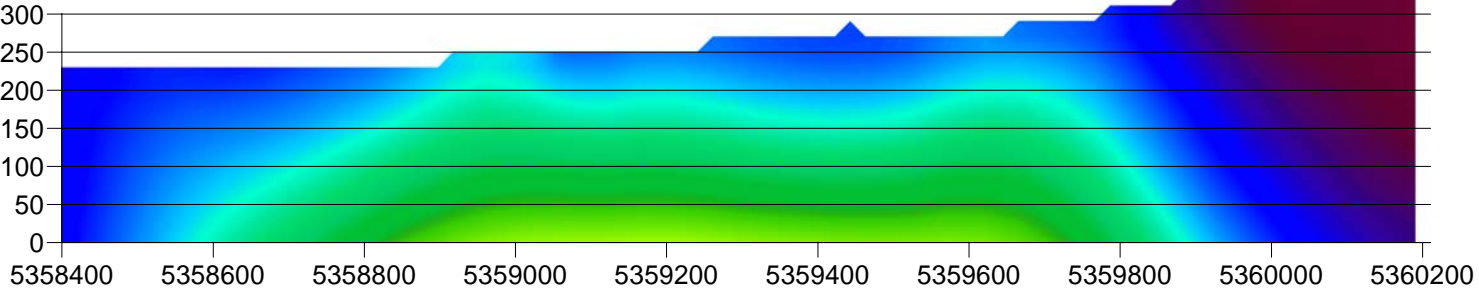


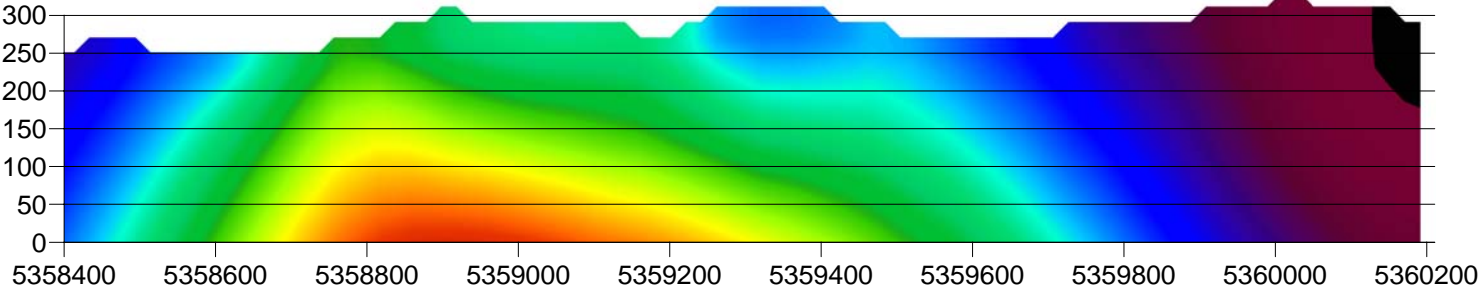
North-South Profile 358800E



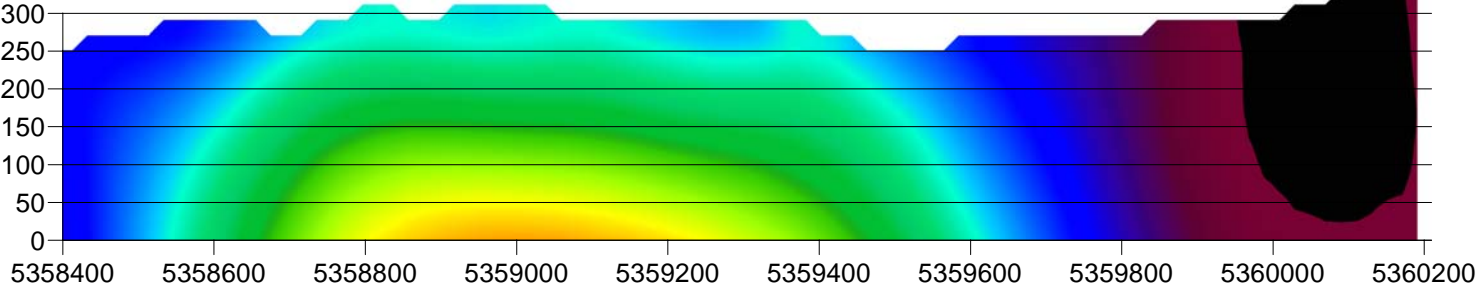
North-South Profile 359200E



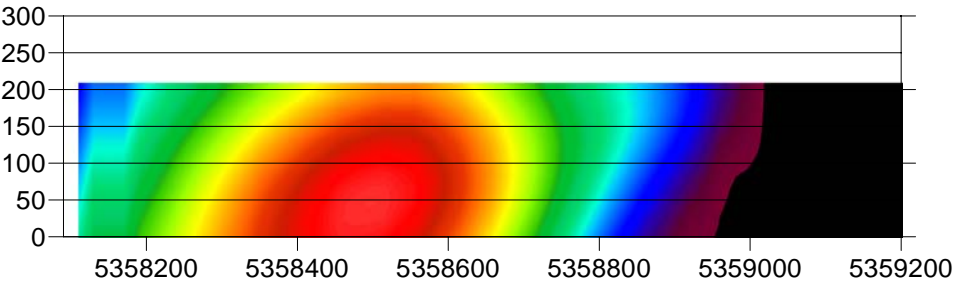
North-South Profile 359600E



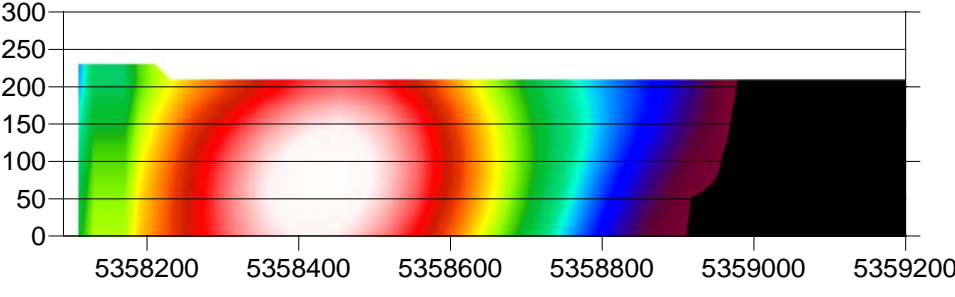
North-South Profile 360000E



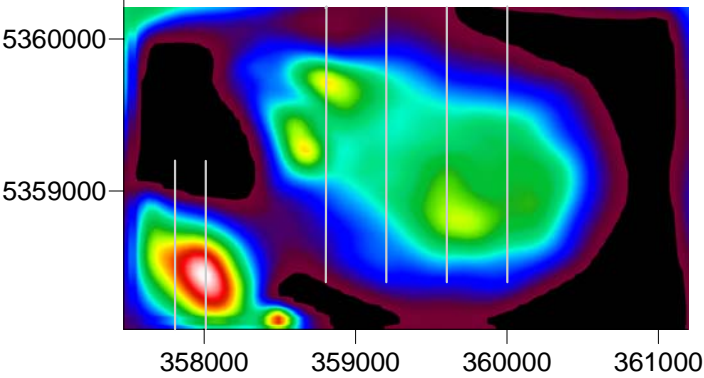
North-South Profile 357810E



North-South Profile 358000E



Plan at 125 m
Scale 1:50000



SURVEY SPECIFICATIONS

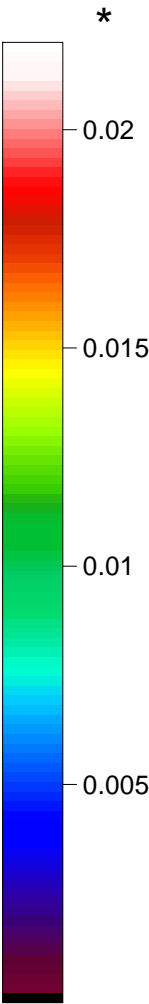
Contractor : GPX Airborne Pty Ltd
Date : June 2007
Survey type : Airborne Magnetic
Line Direction : 000-180
Line Spacing : 50/75 m
Ground Clearance : 30 m
Resolution : 0.001 nT

MODEL SPECIFICATIONS

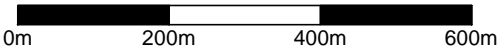
Type : UBC V4 3D Magnetic Inversion
Data : 10 x 10 m Grid of TMI
Model Cell Size : 50 x 50 x 25 m
Data Error : 0.5%
Error Floor : 20 nT
Regional Field : 100 nT
Refined Cell Size : 20 x 20 x 10 m

*Colour shows values of
magnetic suceptibility (inverted)

Profile Locations



SOUTHERN GEOSCIENCE CONSULTANTS
PTY LTD - ACN 067 552 461



Scale 1:10000
DATUM: GDA94
GRID: MGA ZONE 55

STONEHENGE METALS LIMITED

STONEHENGE PROSPECT

North-South Profiles of
Inverted Magnetic Data