

J050	C103350	J115	C103515	J288	C103488	V227	C103227
J051	C103351	J116	C103516	J289	C103489	V262	C103262
J052	C103352	J117	C103517	J290	C103490	V263	C103263
J053	C103353	J118	C103518	J291	C103491	V264	C103264
J054	C103354	J119	C103519	J292	C103492	V265	C103265
J055	C103355	J120	C103520	J293	C103493	V266	C103266
J056	C103356	J121	C103521	J296	C103496	V267	C103267
J057	C103357	J122	C103522	J297	C103497	V268	C103268
J058	C103358	J123	C103523	J298	C103498	V269	C103269
J059	C103359	J124	C103524	J300	C103500	V270	C103270
J060	C103360	J125	C103525	J629	C104837	V271	C103271
J061	C103361	J126	C103526	J630	C104838	V272	C103272
J062	C103362	J127	C103527	J631	C104839	V273	C103273
J063	C103363	J128	C103528	J632	C104840	V349	C194051
J064	C103364	J214	C103414	J633	C104841	VP3	R001616
J065	C103365	J215	C103415	J634	C104842	VP5	R001618

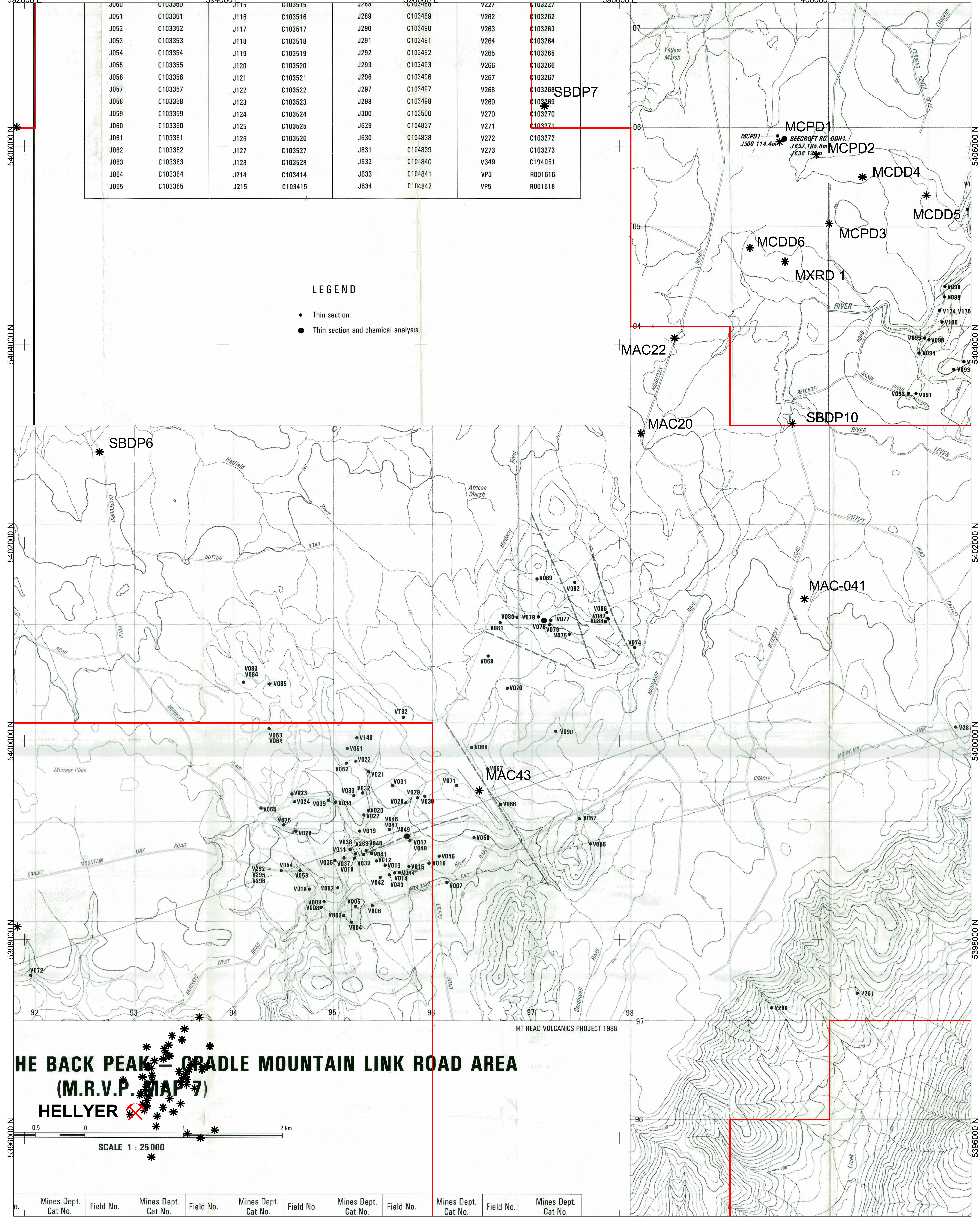
LEGEND

- Thin section.
- Thin section and chemical analysis.

THE BACK PEAK - CRADLE MOUNTAIN LINK ROAD AREA
(M.R.V.P. MAP 7)
HELLYER

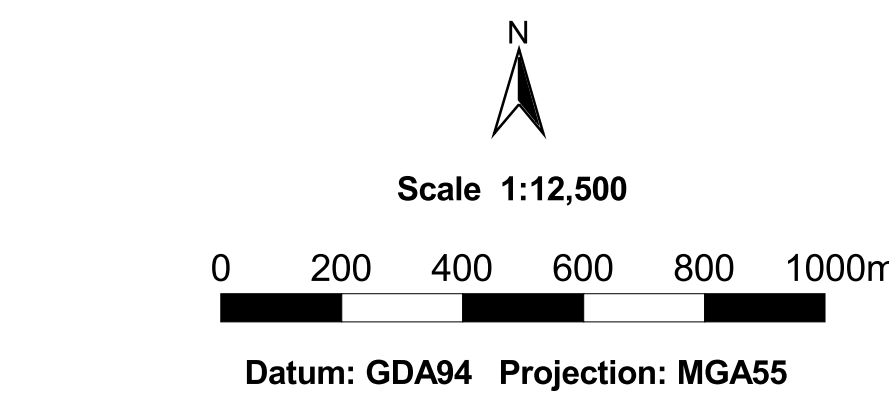


Mines Dept. Cat No.	Field No.	Mines Dept. Cat No.	Field No.	Mines Dept. Cat No.	Field No.	Mines Dept. Cat No.	Field No.	Mines Dept. Cat No.	Field No.	Mines Dept. Cat No.
392000 E		394000 E		396000 E		398000 E		400000 E		



- LEGEND
- Existing diamond drillholes (Mineral Resources Tasmania)
 - SinoSteel Tenement

NOTES



中钢澳大利亚有限公司
SINOSTEEL AUSTRALIA PTY LTD

SINOSTEEL AUSTRALIA

PAINTER PROJECT

Sample Locations

Compiled By: Resource Potentials
Plot Name: SSU/Painter_TAS_m55
Date: 10/09/08