

Fig 3e. Upward continued at 500m, showing deep features

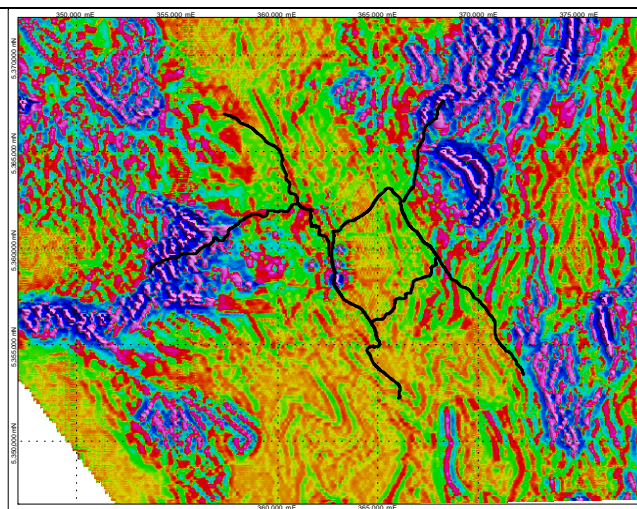


Fig 3f. first VD applied on the separation filter

**2.2 Multi-scale Edge Detection:** worming algorithm is applied on magnetic data to locate edges (e.g. geological contacts) or peaks from magnetic data by analysing the local gradients to assist the geological interpretation.

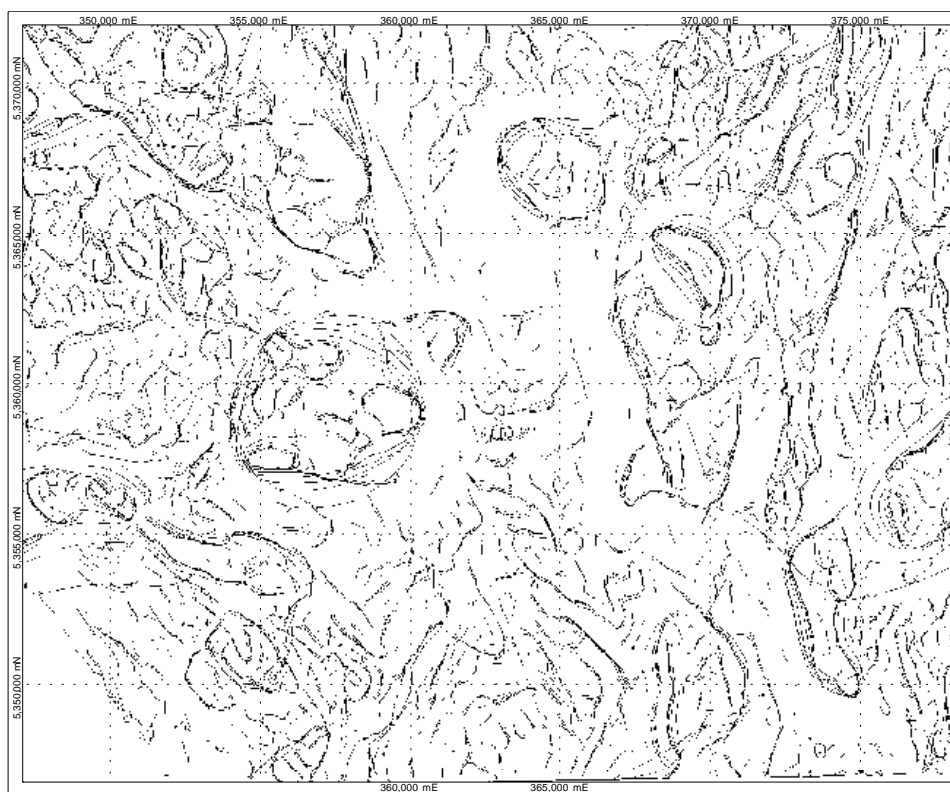


Fig 4a. Worming results of the Zeehan RTP data

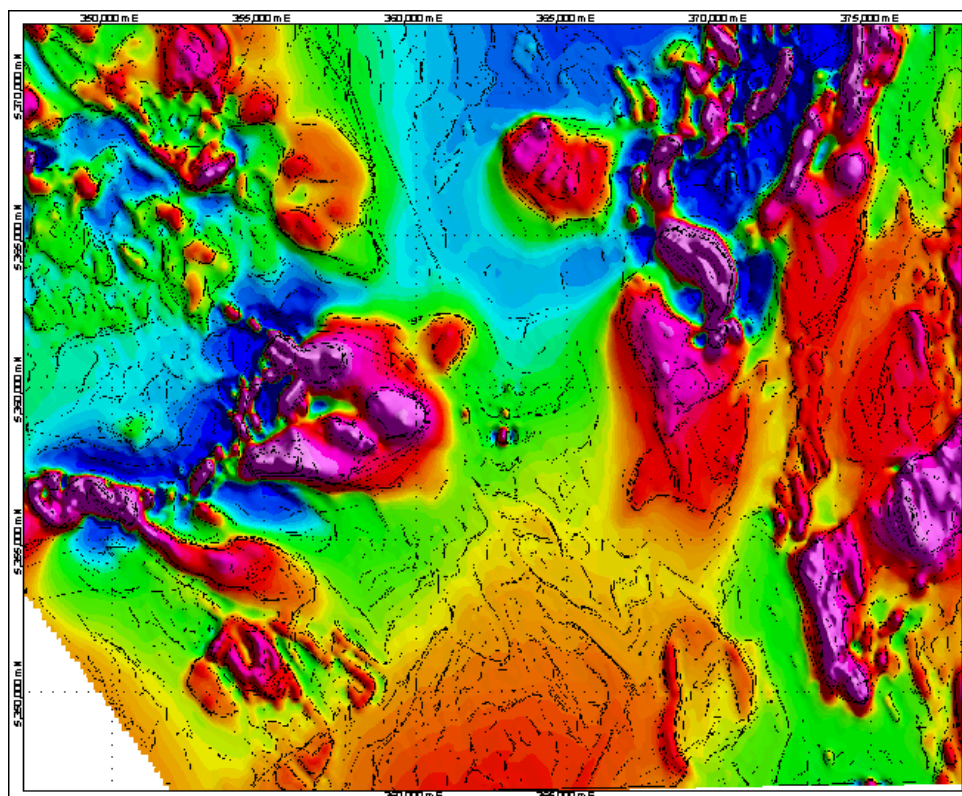


Fig 4b. Worming results superimposed on the RTP image, showing the geological boundaries, structural features