

2.3 3D Magnetic Inversions: 3D subsurface susceptibility distribution within the study area has been generated using UBC 3D magnetic inversion program, which inverts the magnetic data into a susceptibility model, will be used to constrain seismic interpretation.

2.4 Magnetic Forward Modelling: Five preliminary magnetic models have been established using ModelVision Pro, based on the magnetic data and geological information, and will be further tuned tuned with seismic interpretation.

Recommendation

SRk recommends that the reprocessing for approximately \$25000 be undertaken. I look forward to hearing from you in due course.

Your sincerely

Patrick Hillsdon
Senior consultant (Geophysics)
SRK Consulting Pty Ltd

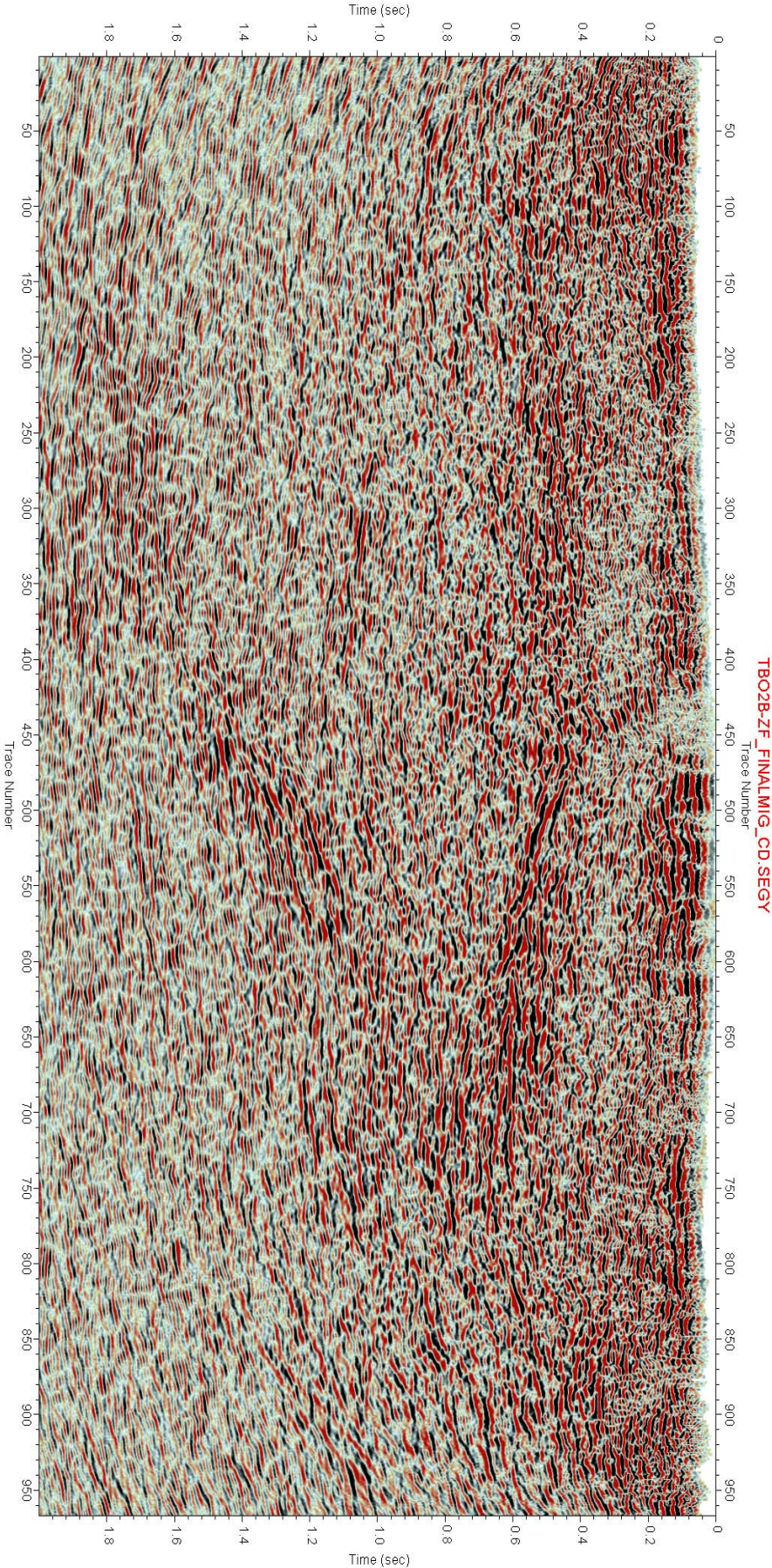


Fig 1 Fugro Processed Seismic Line

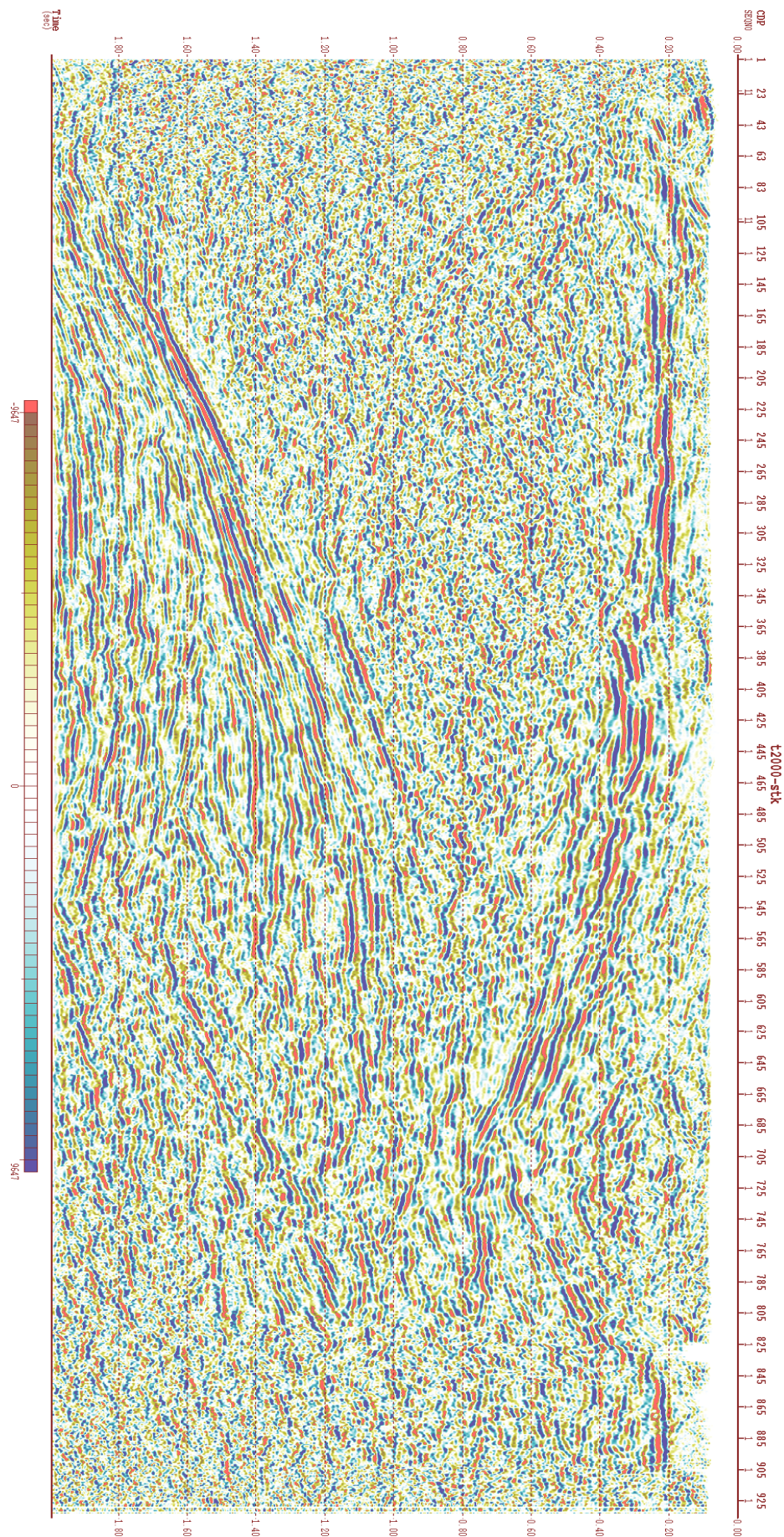


Fig 2 Reprocessed Seismic Line