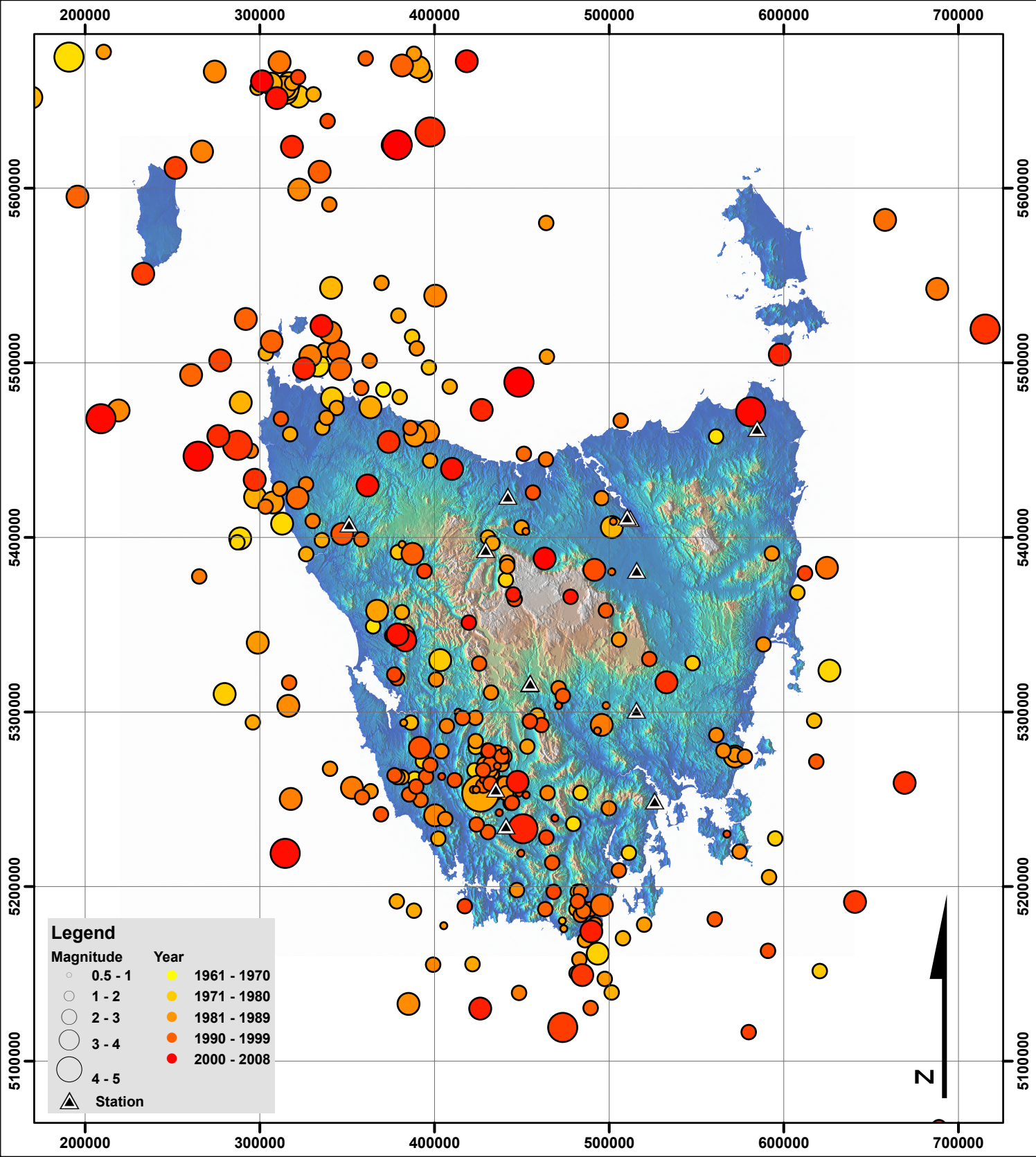
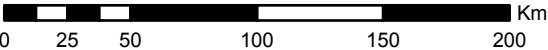


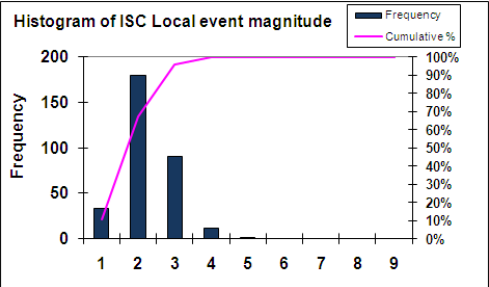
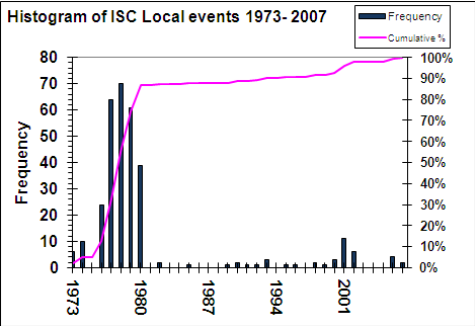
MAP 3: Tasmanian earthquake events occurring between 1973 - 2007, from ISC, ONLINE BULLETIN Database (2009).



Scale 1:3,000,000



Grid: Map Grid of Australia (MGA), Zone 55



Projected coordinate system:  
Geocentric Datum of Australia 1994  
(GDA 1994) MGA Zone 55.  
Original map size: A4

Source: Datasets derived from the International Seismological Centre,  
ISC Online Bulletin (2009); International Seismological Centre,  
International Registry of Seismograph Stations (2009).  
Digital base data derived from DPIWE (1998).  
Map produced using GIS software,  
compiled by Knight K. School of Earth Sciences,  
University of Tasmania 1/12/2009