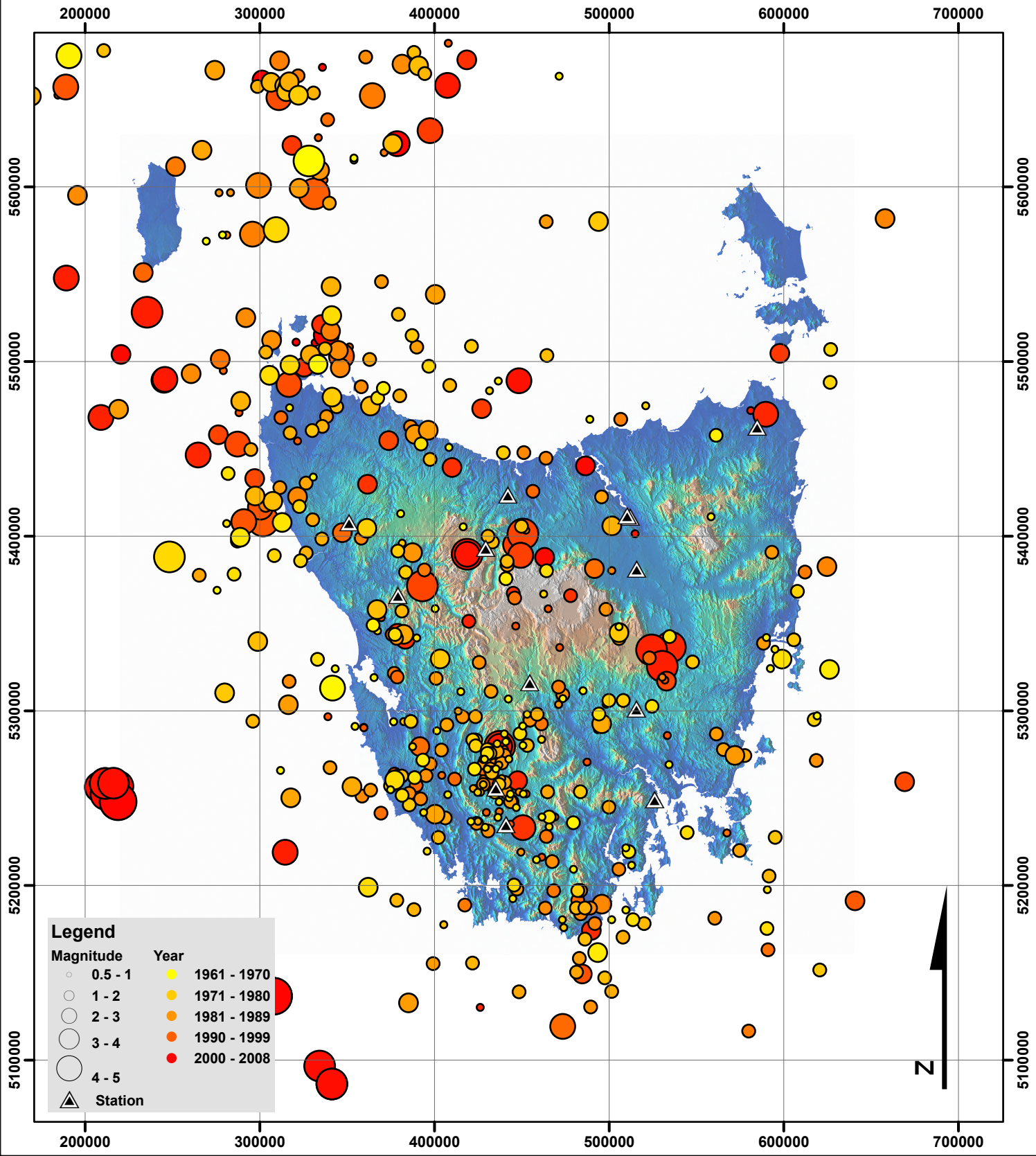
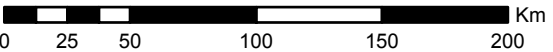


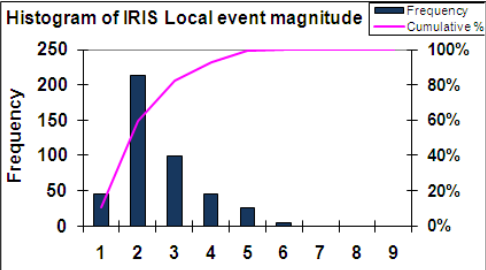
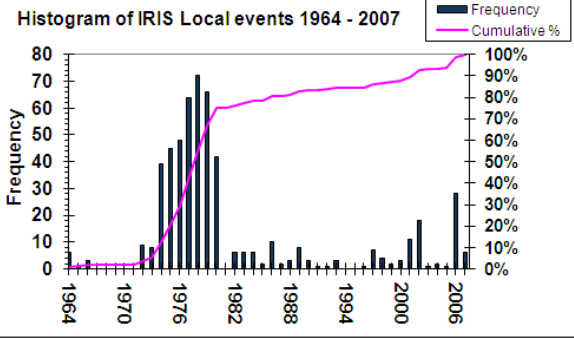
MAP 4: Tasmanian earthquake events occurring between 1964 - 2007, from IRIS, Event Catalog (2009).



Scale 1:3,000,000



Grid: Map Grid of Australia (MGA), Zone 55



Projected coordinate system:
Geocentric Datum of Australia 1994
(GDA 1994) MGA Zone 55.
Original map size: A4

Source: Datasets derived from Incorporated Research
Institutions for Seismology, Event Catalog (2009);
International Seismological Centre,
International Registry of Seismograph Stations (2009).
Digital base data derived from DPIWE (1998).
Map produced using GIS software,
compiled by Knight K. School of Earth Sciences,
University of Tasmania 1/12/2009