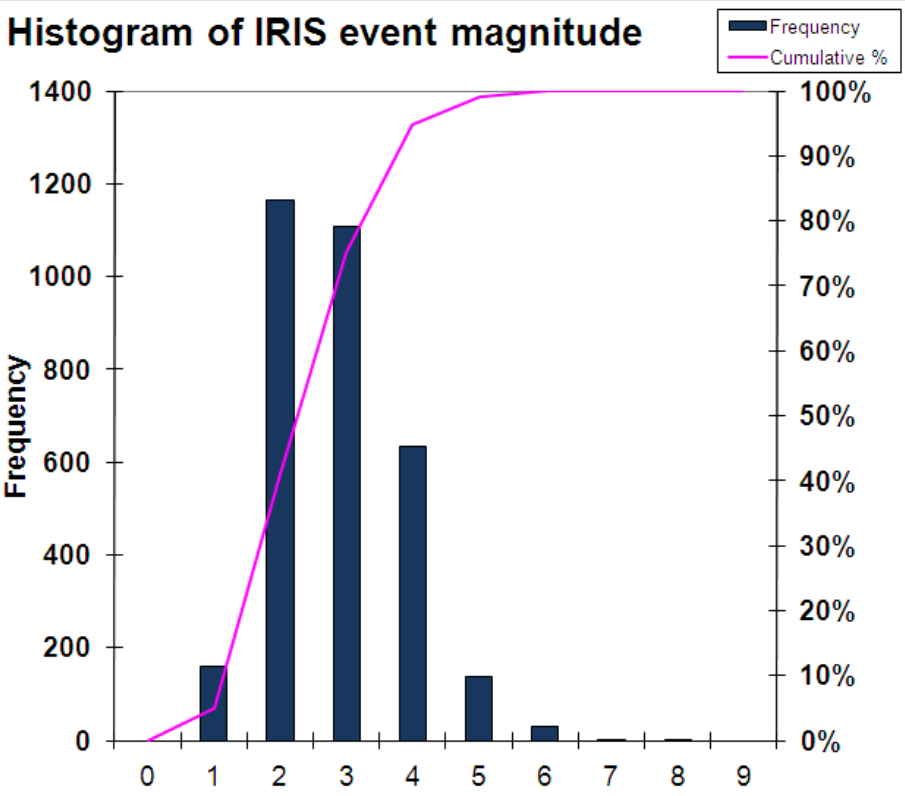
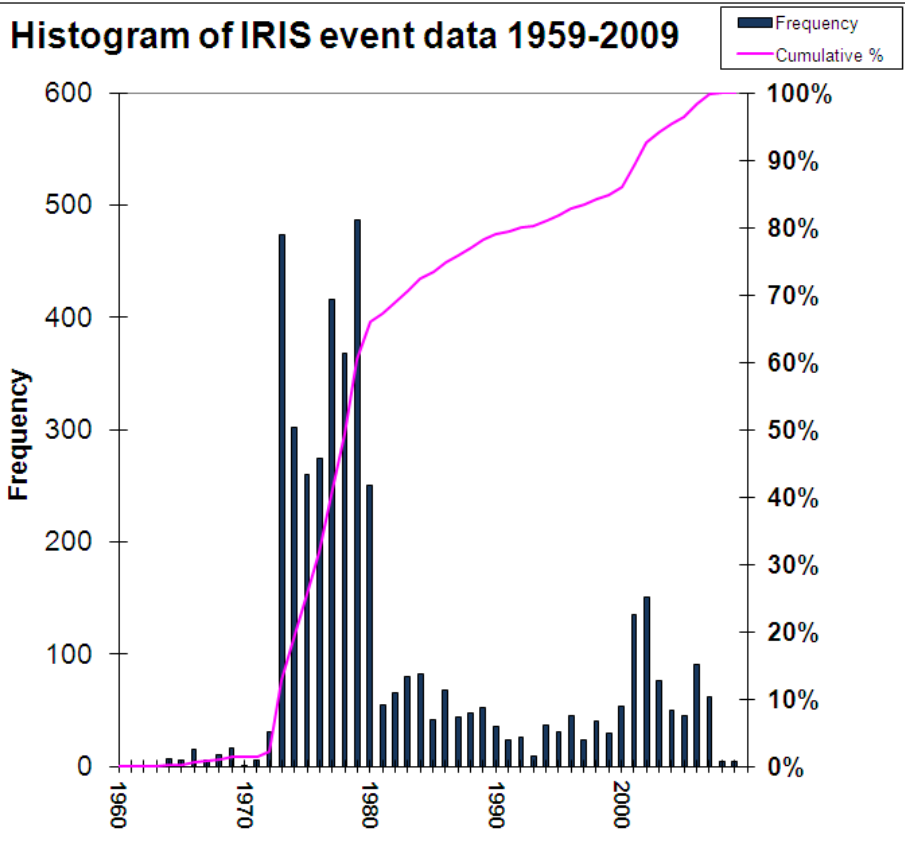
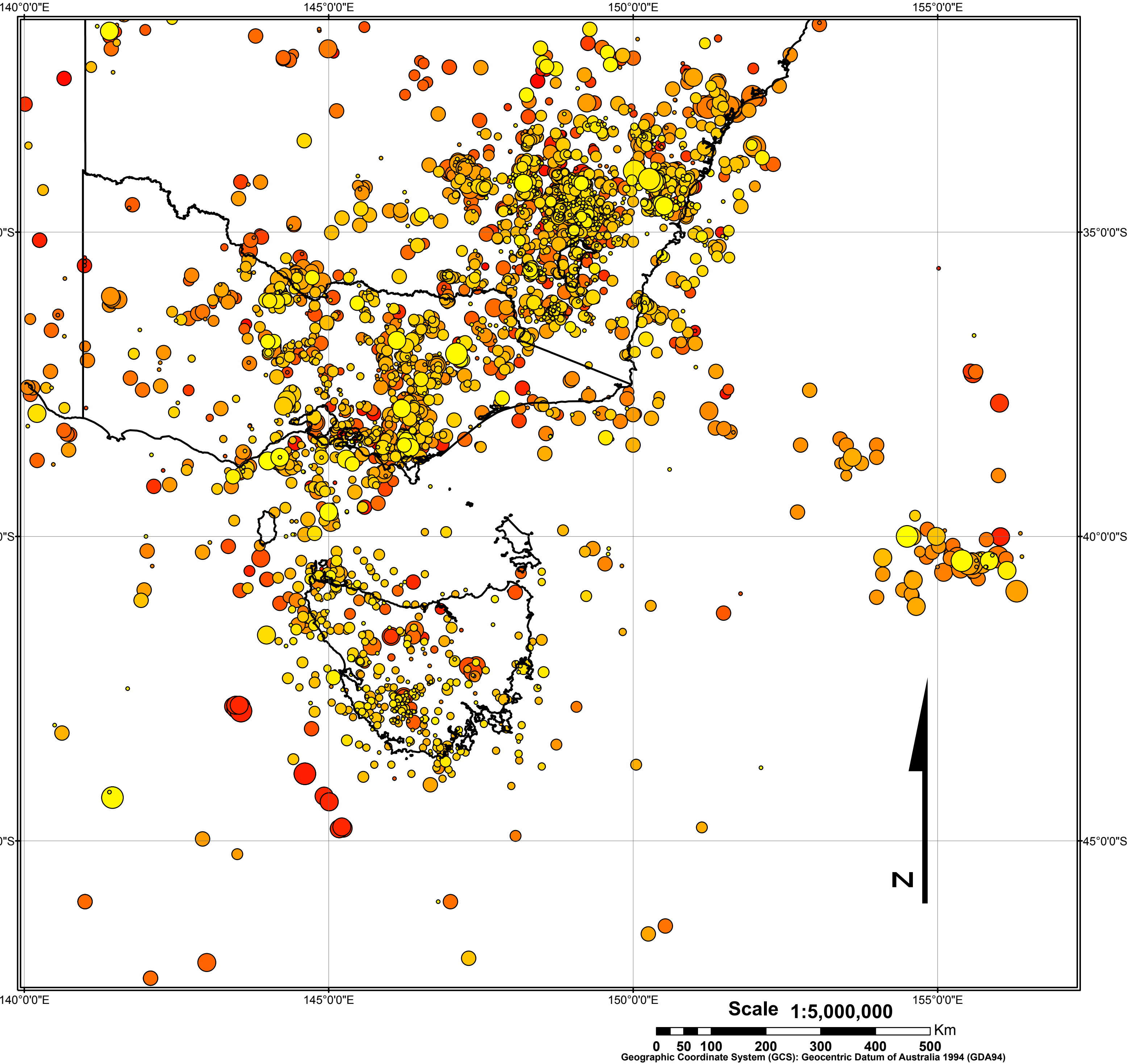


MAP 6: SE Australian earthquake events occurring between 1964-2009, from IRIS, Event Catalog (2009).



### Legend

Earthquake magnitude		Year	
◦	0 - 1	●	1964 - 1973
○	1 - 2	●	1974 - 1982
○	2 - 3	●	1983 - 1991
○	3 - 4	●	1992 - 2000
○	4 - 5	●	2001 - 2009
○	5 - 6		

Geographic coordinates: Decimal degrees  
Coordinate system: Geocentric Datum of Australia 1994 (GDA94)  
Original map size: A4

Source: Datasets derived from Incorporated Research Institutions for Seismology, Event Catalog (2009).  
Digital base data derived from Geoscience Australia, Geodata topo 5M 2004.  
Map produced using GIS software, compiled by Knight K. School of Earth Sciences, University of Tasmania 1/12/2009