



DUAL LATEROLOG - MLL COMPENSATED SONIC - TAC

1:500

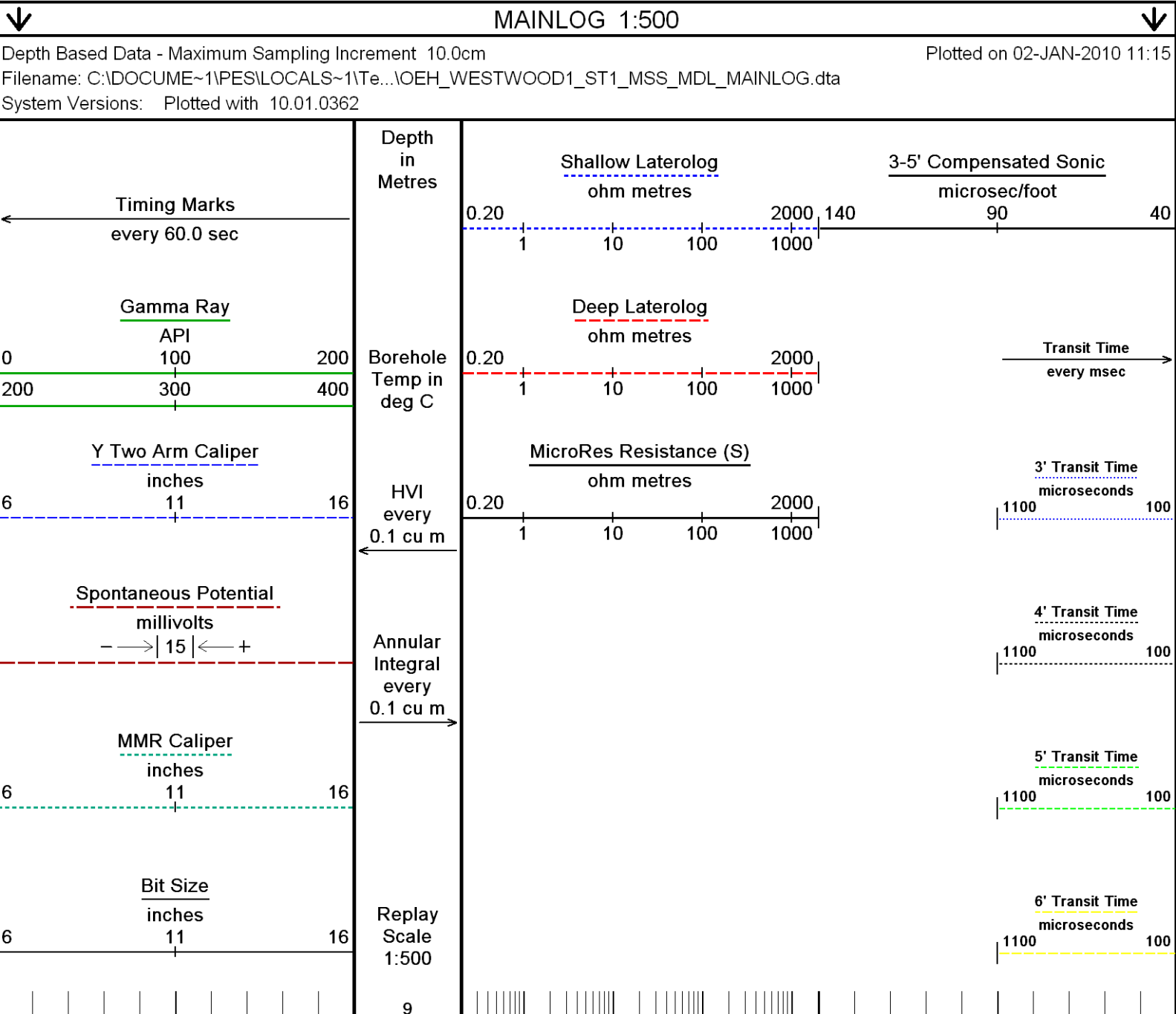
COMPANY	OEH			
WELL	WESTWOOD 1 - ST1			
FIELD	N/A			
PROVINCE/COUNTRY	TASMANIA			
COUNTRY/STATE	AUSTRALIA			
LOCATION	EASTING 502839.2m (MGA 94) NORTHING 6804958.7m (MGA 94)			
Latitude	41° 31' 9.3" S	Other Services		
Longitude	147° 21' 2.5" E	NONE		
Permanent Datum M.S.L., Elevation 0.0 metres				
Log Measured From D.F., 149 M above Permanent Datum				
Drilling Measured From D.F.				
Date	1-JAN-2010	Elevations:		metres
Run Number	ONE	KB	DF	149.00
Depth Driller	1679.00	metres		
Depth Logger	1678.00	metres		
First Reading	1677.15	metres		
Last Reading	10.00	metres		
Casing Driller	338.00	metres		
Casing Logger	337.50	metres		
Bit Size	8.500	inches		
Hole Fluid Type	KCL/Polymer			
Density / Viscosity	9.30 ppg	41.00 sec/qt		
PH / Fluid Loss	10.60	6.80 ml/30Min		
Sample Source	MUD PIT			
Rm @ Measured Temp	0.54 @ 25.0	ohm-m		
Rmf @ Measured Temp	0.49 @ 25.0	ohm-m		
Rmc @ Measured Temp	0.84 @ 25.0	ohm-m		
Source Rmf / Rmc	PRESS	FILTER		
Rm @ BHT	0.30 @ 61.0	ohm-m		
Time Since Circulation	10.25			
Max Recorded Temp	61.00	deg C		
Equipment Name	COMPACT			
Equipment / Base	2	ROMA		
Recorded By	S. LUTTER			
Witnessed By	L. BURGESS			
Last Circulation	06:15/01-JAN			

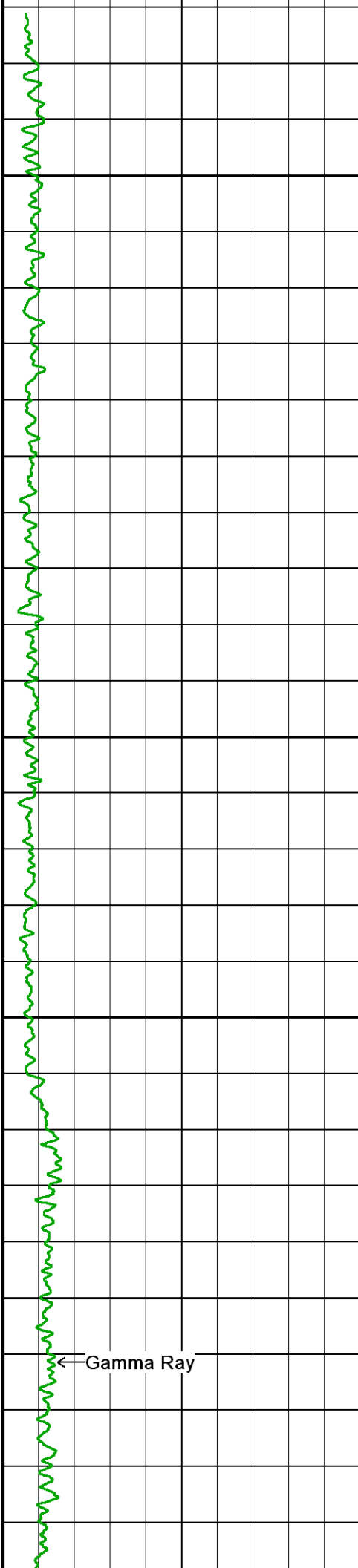
BOREHOLE RECORD			Last Edited: 2-JAN-2010 11:12
Bit Size inches	Depth From metres	Depth To metres	
8.500	338.00	1679.00	
CASING RECORD			
Type	Size inches	Depth From metres	Shoe Depth metres
SURFACE	9.625	0.00	338.00
Weight pounds/ft			
36.00			

REMARKS
RUN NUMBER 1 IS THE PRIMARY DEPTH REFERENCE LOG. ALL OTHER RUNS ARE CORRELATED BACK TO THIS LOG.
SOFTWARE ISSUE: VERSION 10.06.0425 - 20 AUGUST 2009.
RUN 1 - HFS, MMR, MLE, MUG, MSS, MTC, MCG, MBE, MBE TOOLS RAN IN COMBINATION.
HARDWARE: - MMR: 2 x 1.0" STANDOFFS. - MUG: 1 x 1.0" STANDOFFS. - MBE: 1 x 1.0" STANDOFFS. - MBE: 1 x 1.0" STANDOFFS.
SERVICE REPORT NUMBER: 50706426.
RIG: HUNT ENERGY.
TOTAL HOLE VOLUME (HVOL) FROM T.D. TO SURFACE CASING = 53.2 CUBIC METRES.
TOTAL ANNULAR VOLUME (AVOL) WITH 7.0" PRODUCTION CASING = 20 CUBIC METRES.

SONIC CASING SIGNAL OBSERVED AT 335 METRES.
- LARGE AMOUNTS OF ROAD NOISE OBSERVED OFF BOTTOM. SAME RESULTS ON DOWNLOG.
TWO ARM CALIPER READING UNDERGAGE OFF BOTTOM DUE TO TOOL ECCENTRALIZATION.
CALIPERS CLOSED AT 1040 METRES TO FIX DRUM WRAP.
NO UPHOLE TENSION CURVE. DOWNHOLE TENSION AND RIG DEADLINE TENSION CLOSELY MONITORED THROUGHOUT THE OPERATION.
SP BASELINE SHIFT AT 622 METRES.
RUN 1 ON BOTTOM 16:35, 1 JANUARY 2010.
LOGGING UNIT J-FACTOR FOR HLU002: 0.5080.
LOGGING CREW: ENGINEER 1 - S. LUTTER, ENGINEER 2 - B. MILLSOMM, OPERATOR - D. TODD.

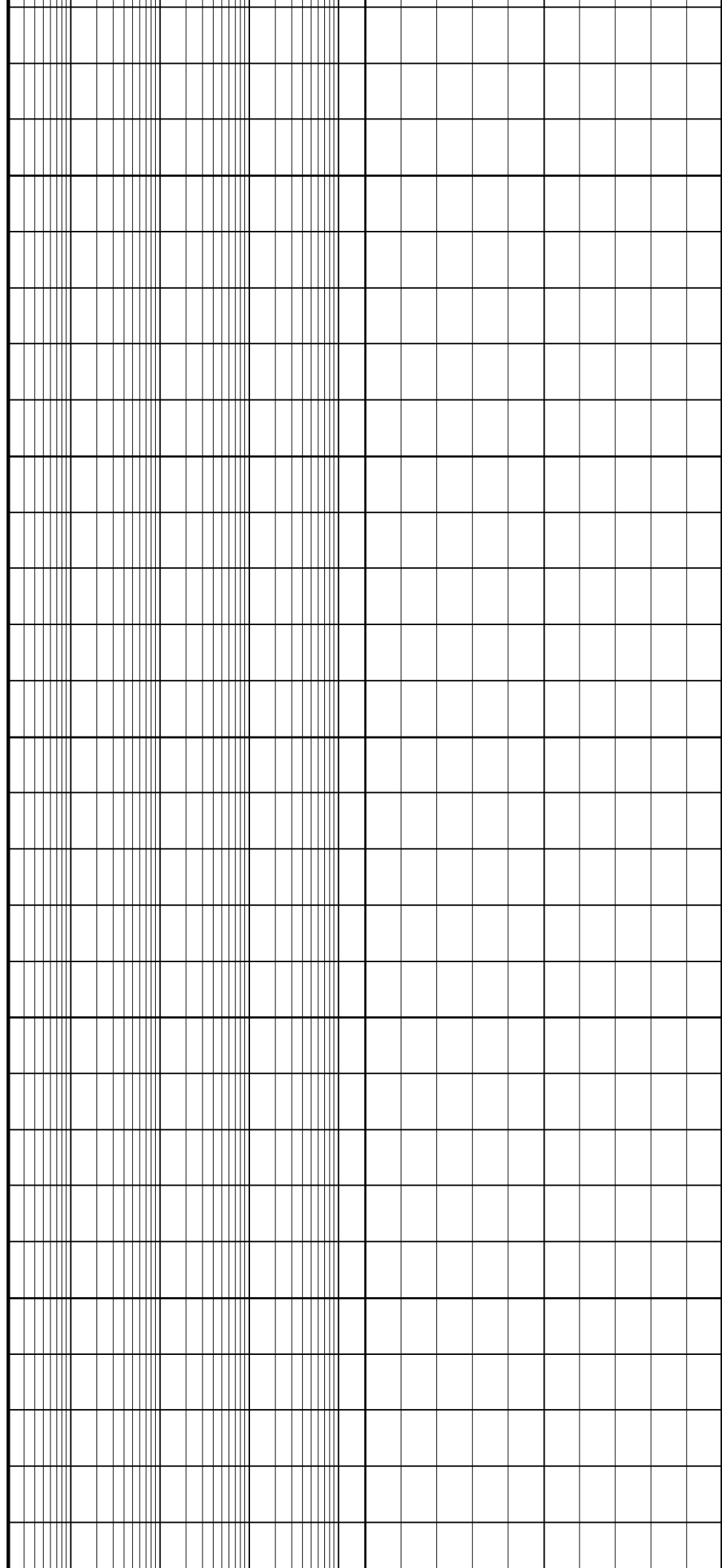
All interpretations are opinions based on inferences from electrical or other measurements and we cannot, and do not, guarantee the accuracy or correctness of any interpretations, and we shall not, except in the case of gross or wilful negligence on our part, be liable or responsible for any loss, costs, damages or expenses incurred or sustained by anyone resulting from any interpretation made by any of our officers, agents or employees. These interpretations are also subject to our general terms and conditions in our price schedule.

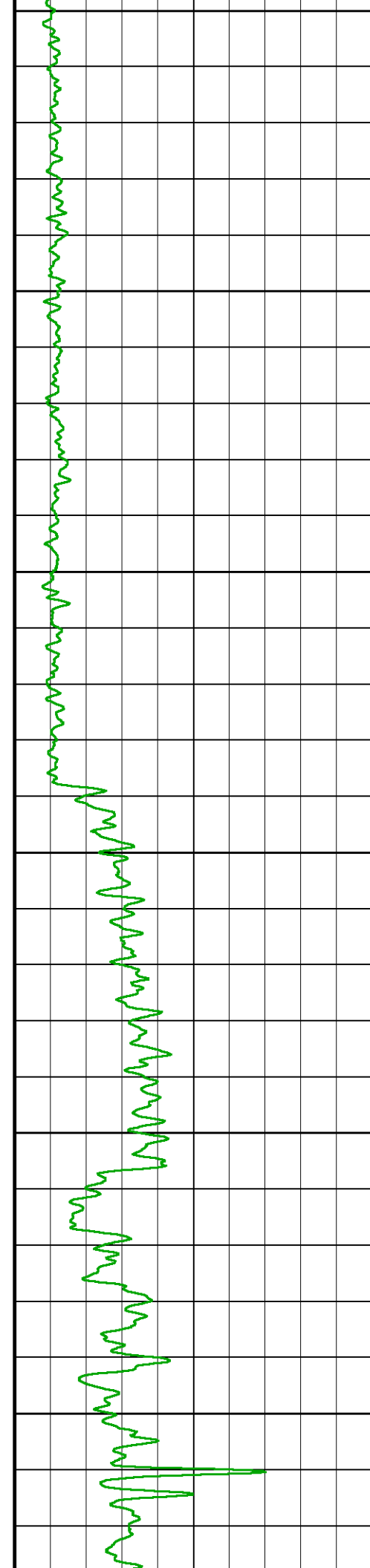




50

100

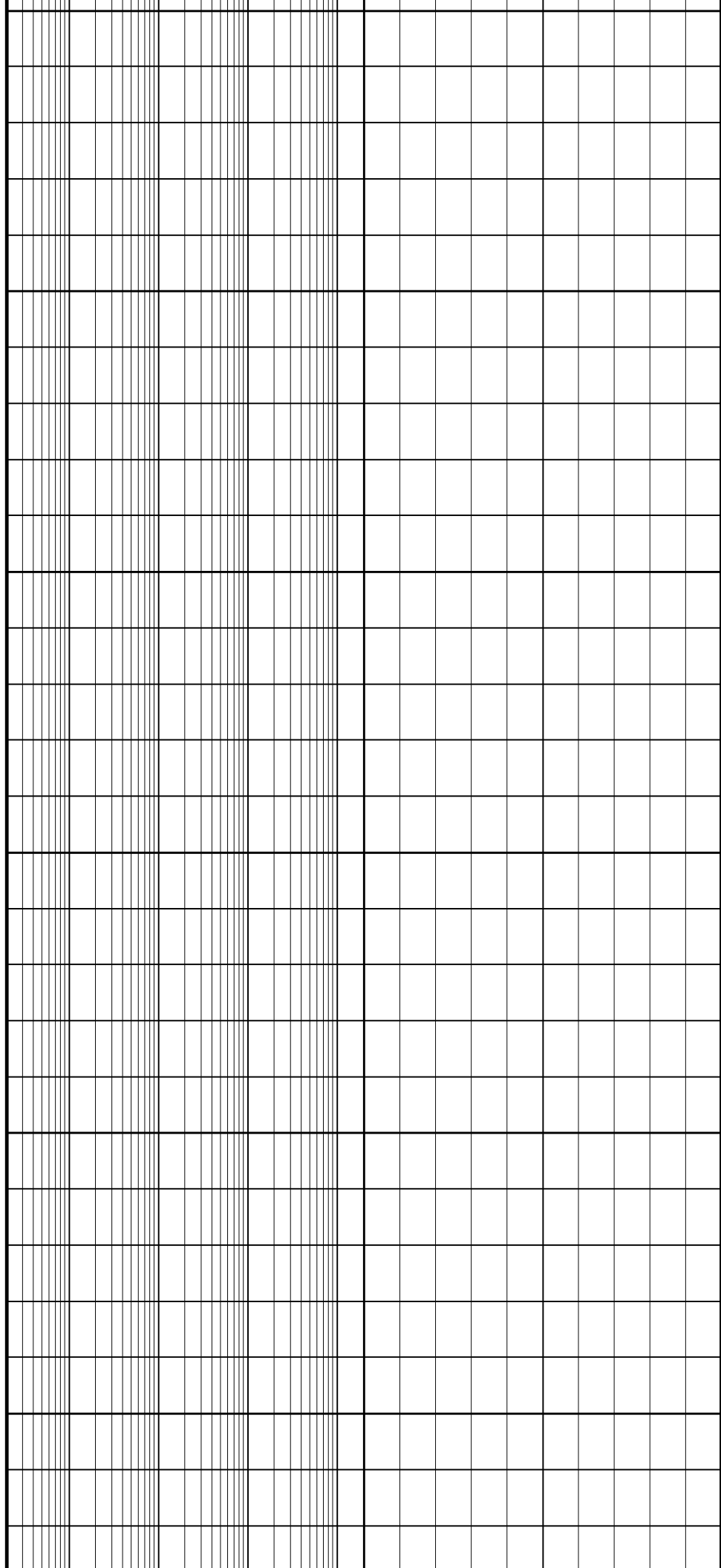


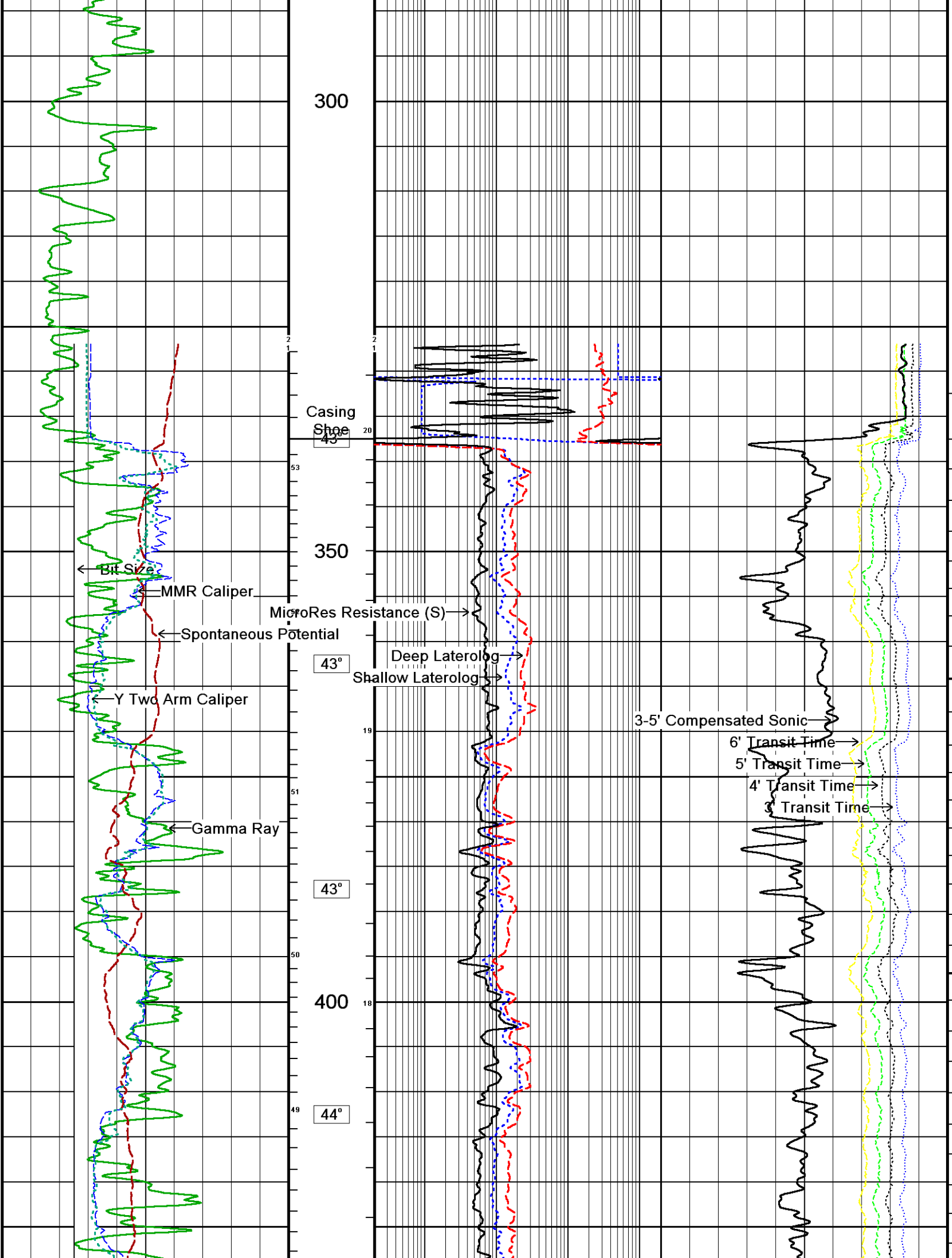


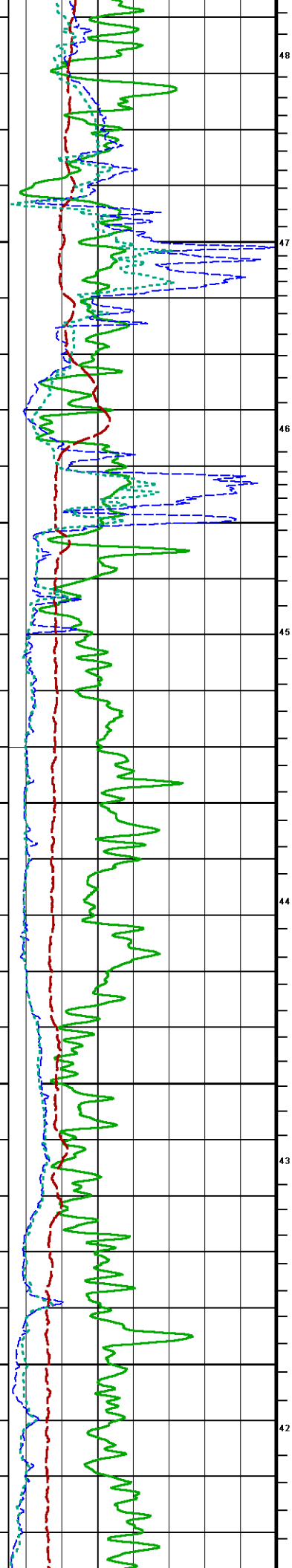
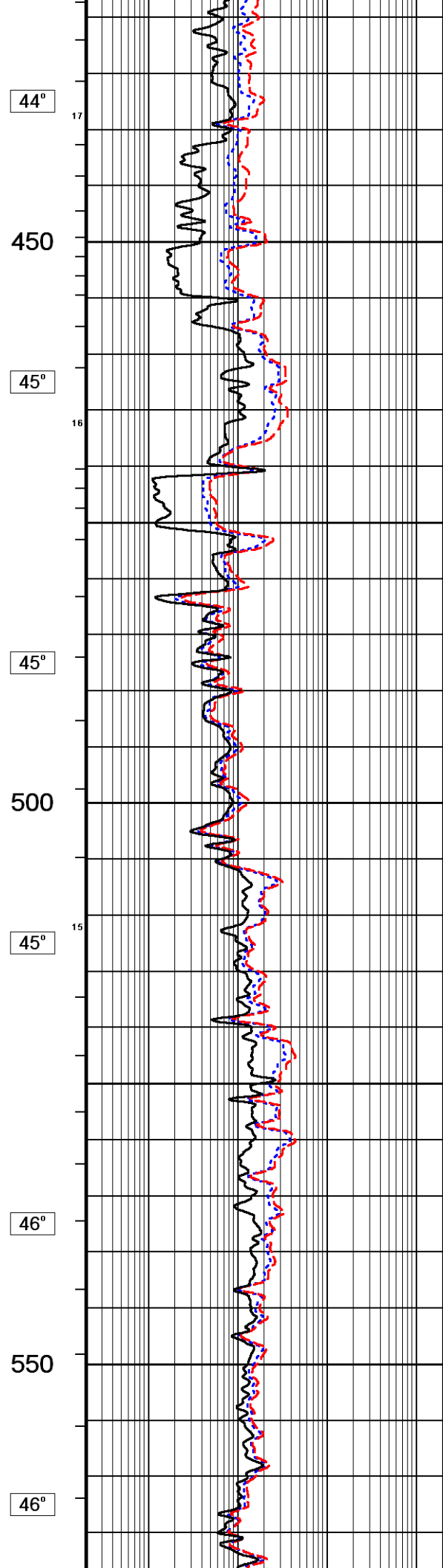
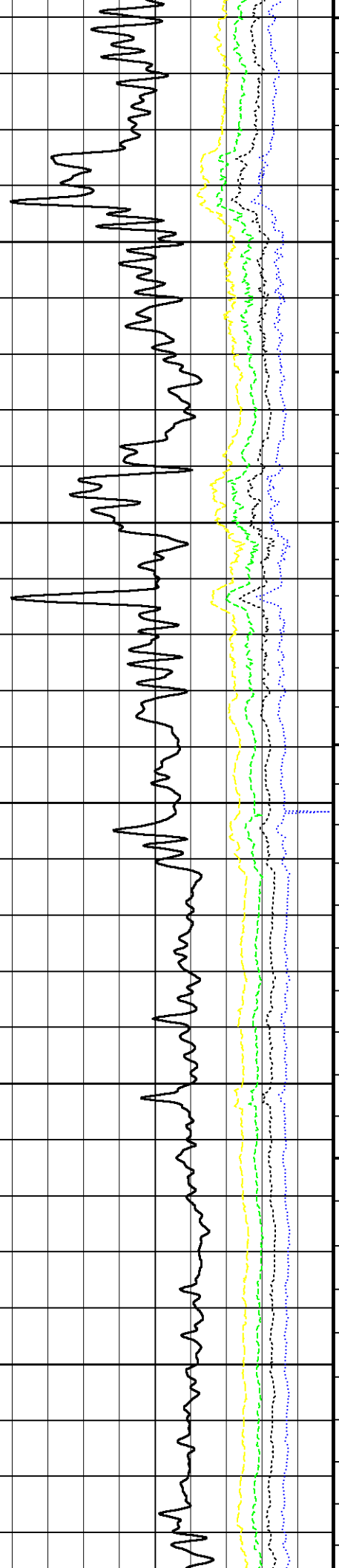
150

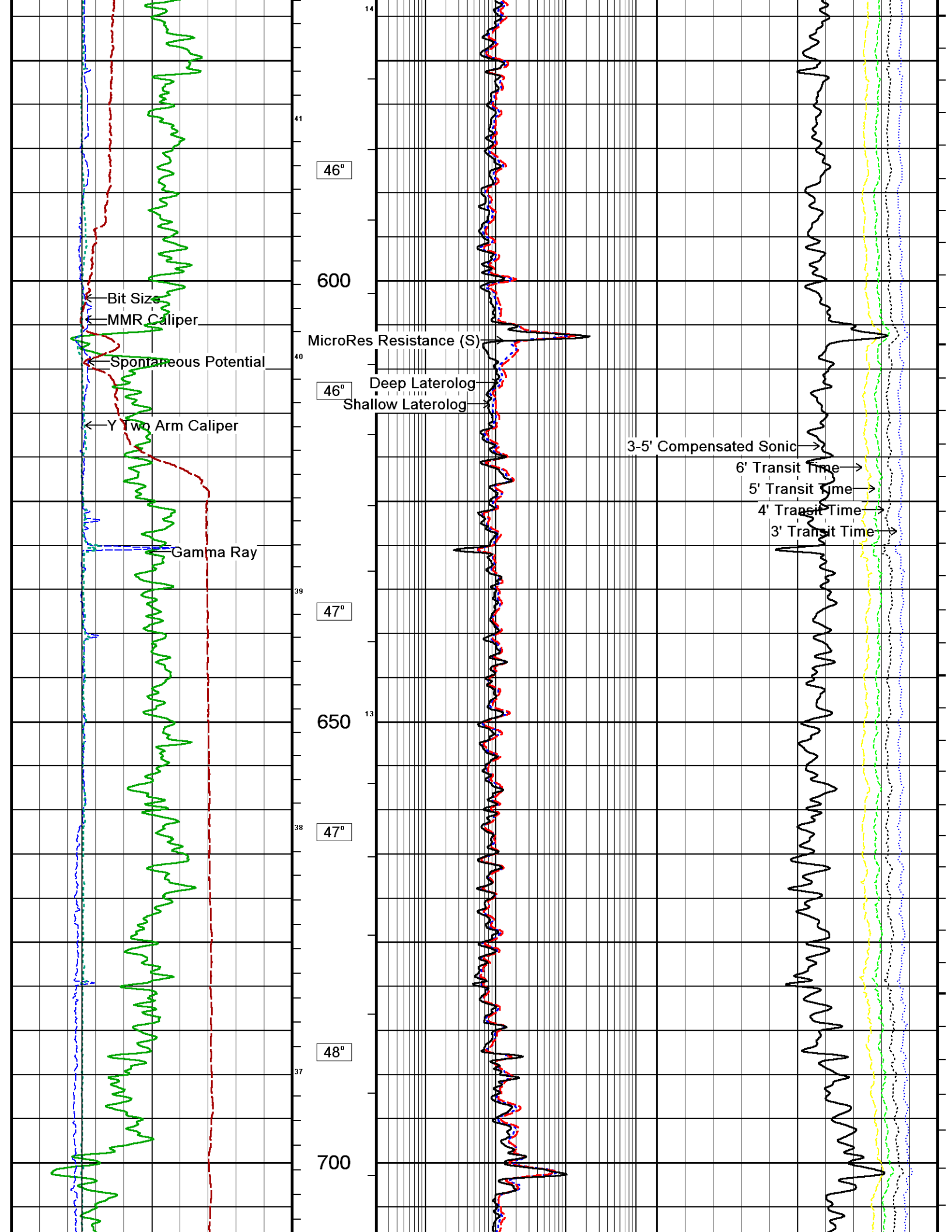
200

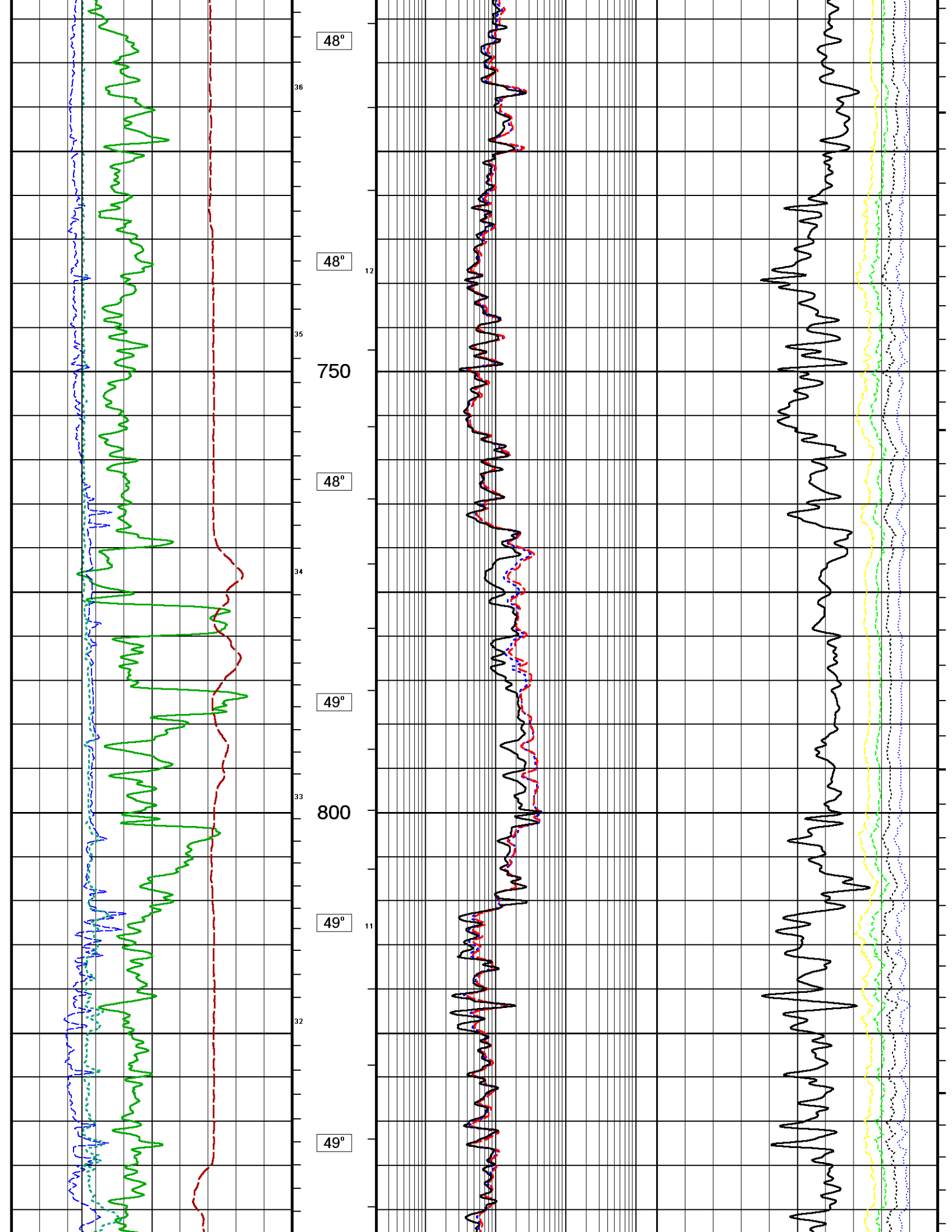
250

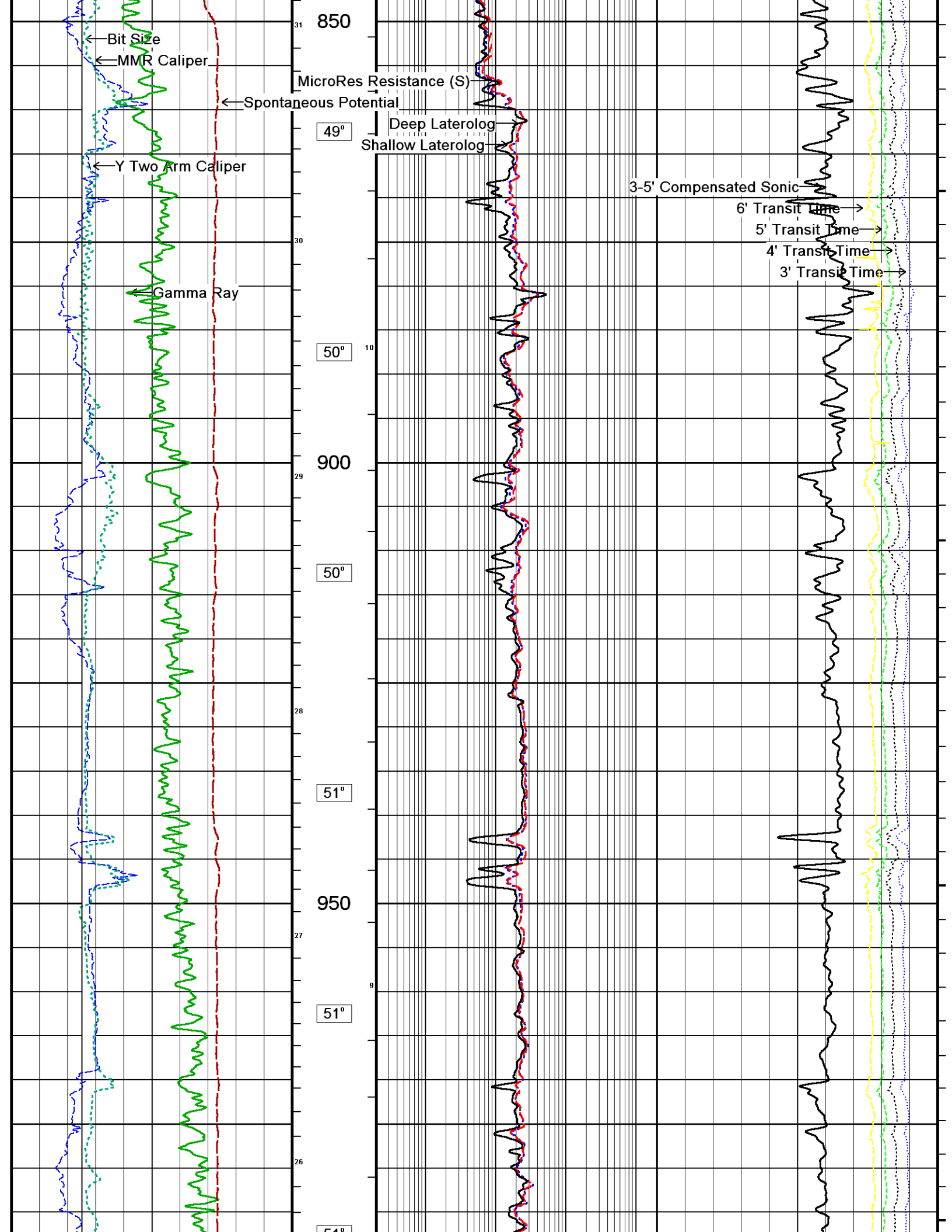


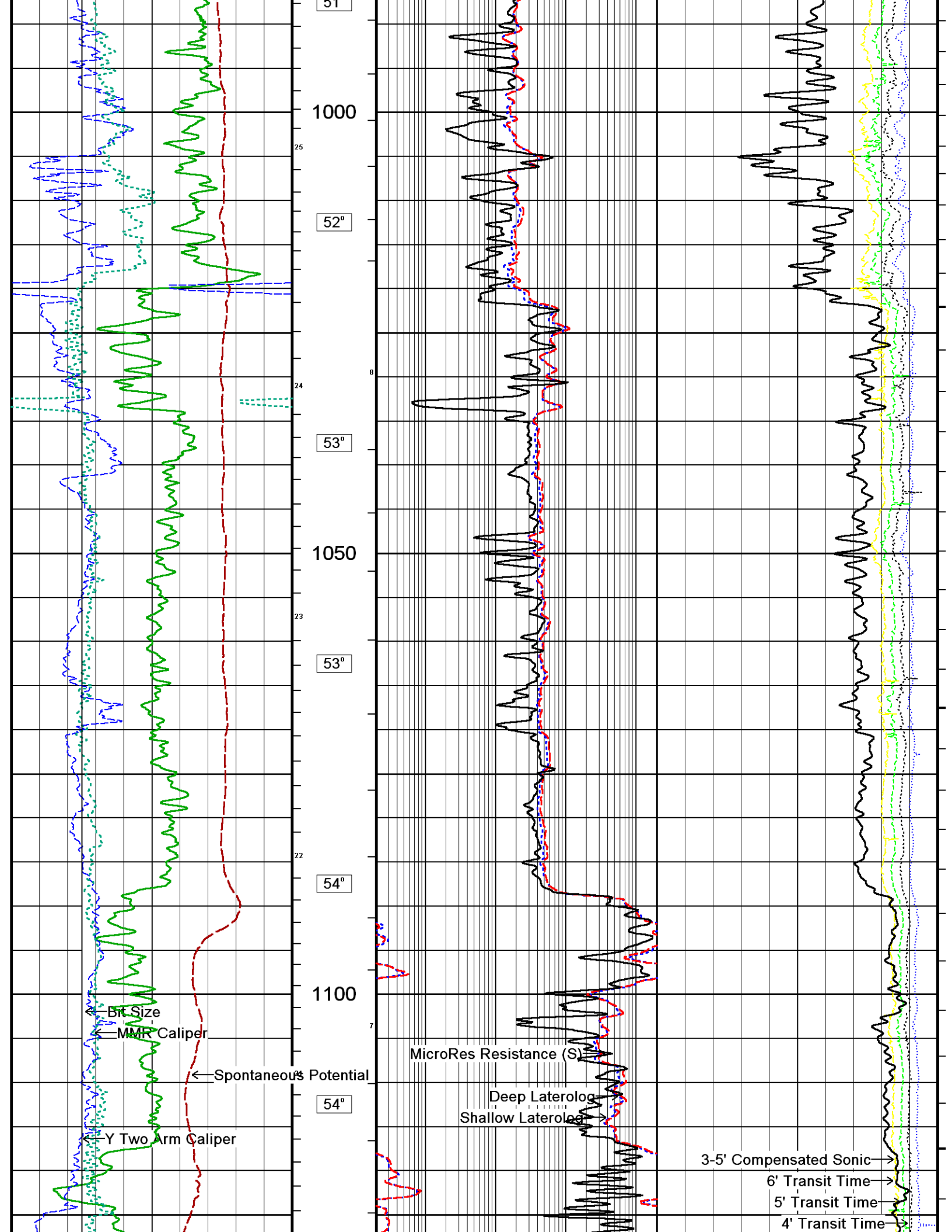


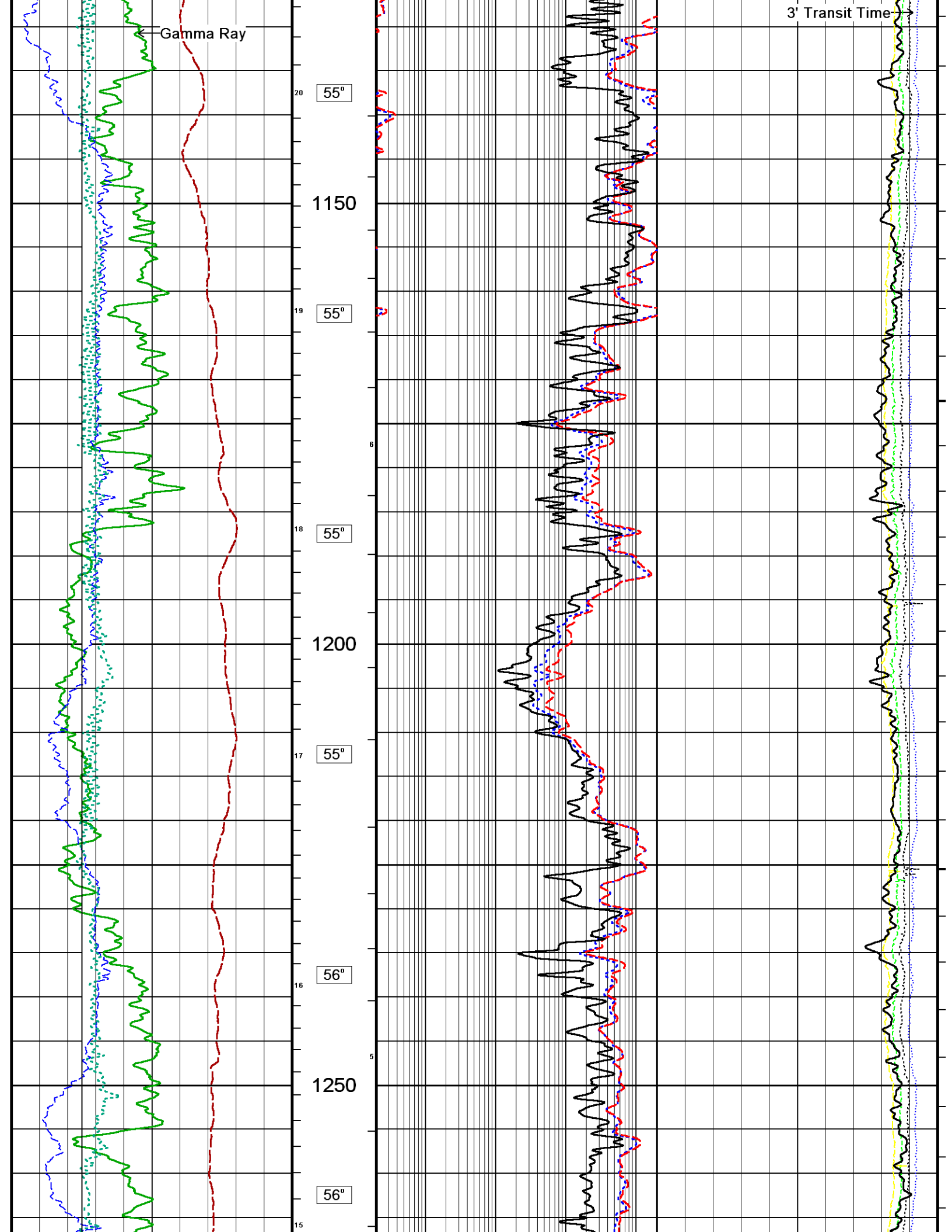


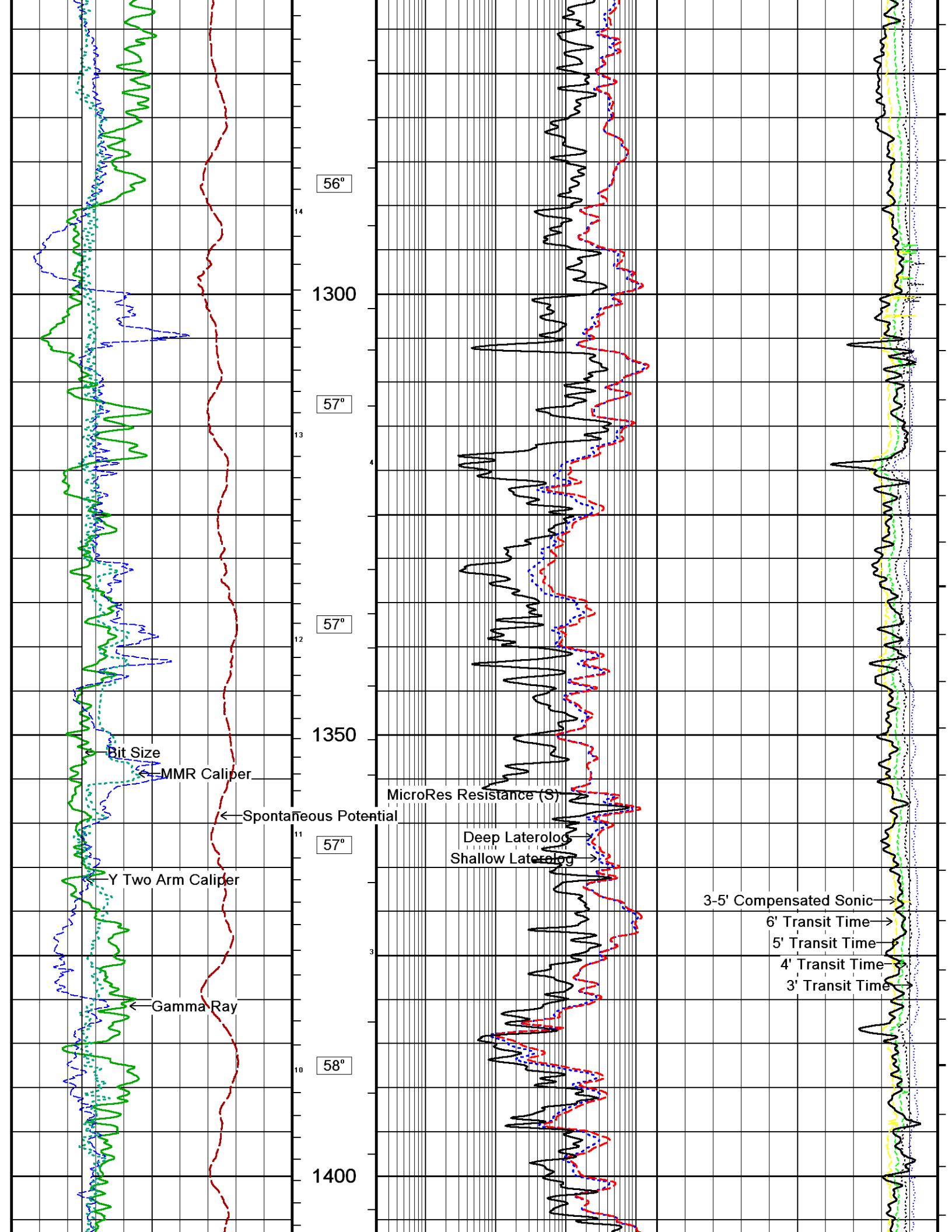


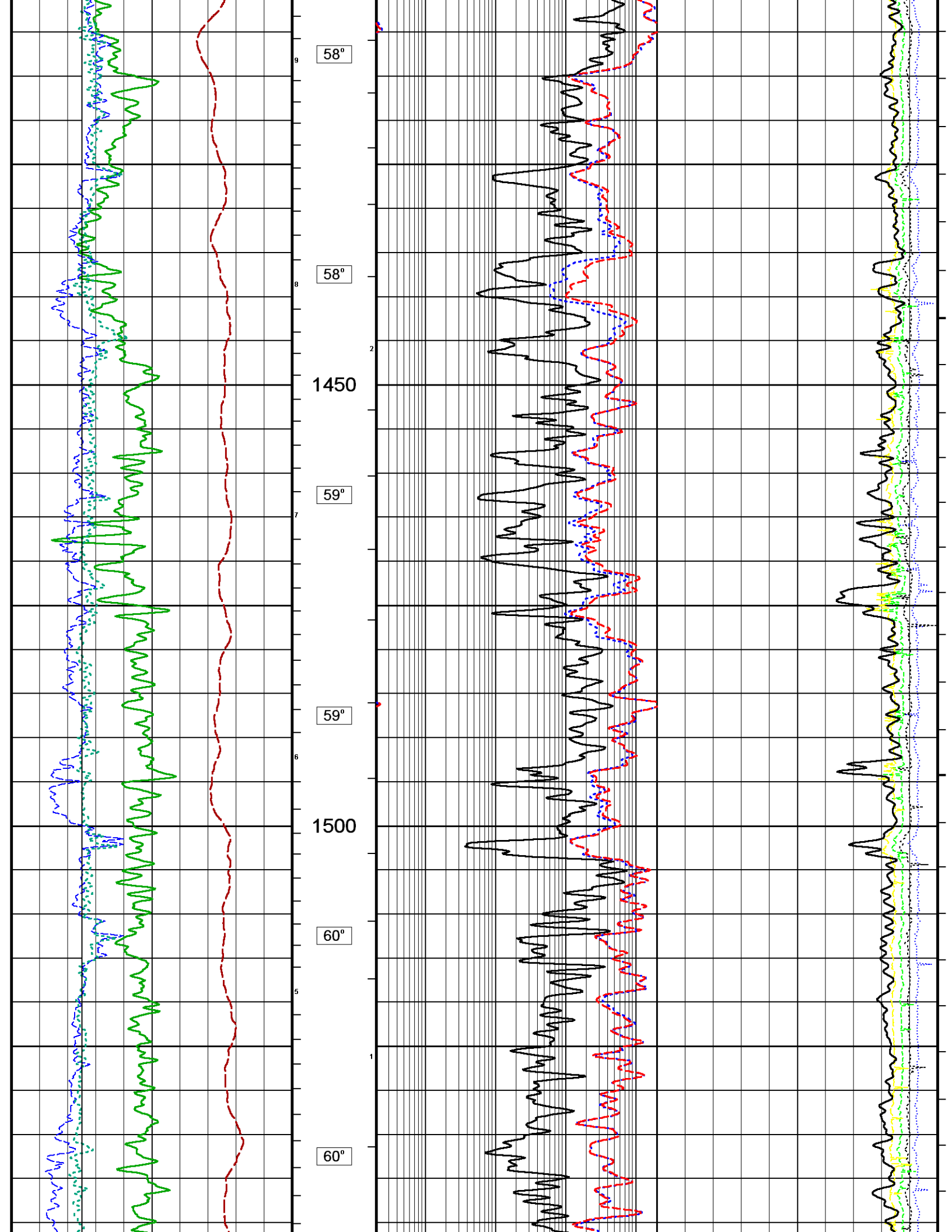


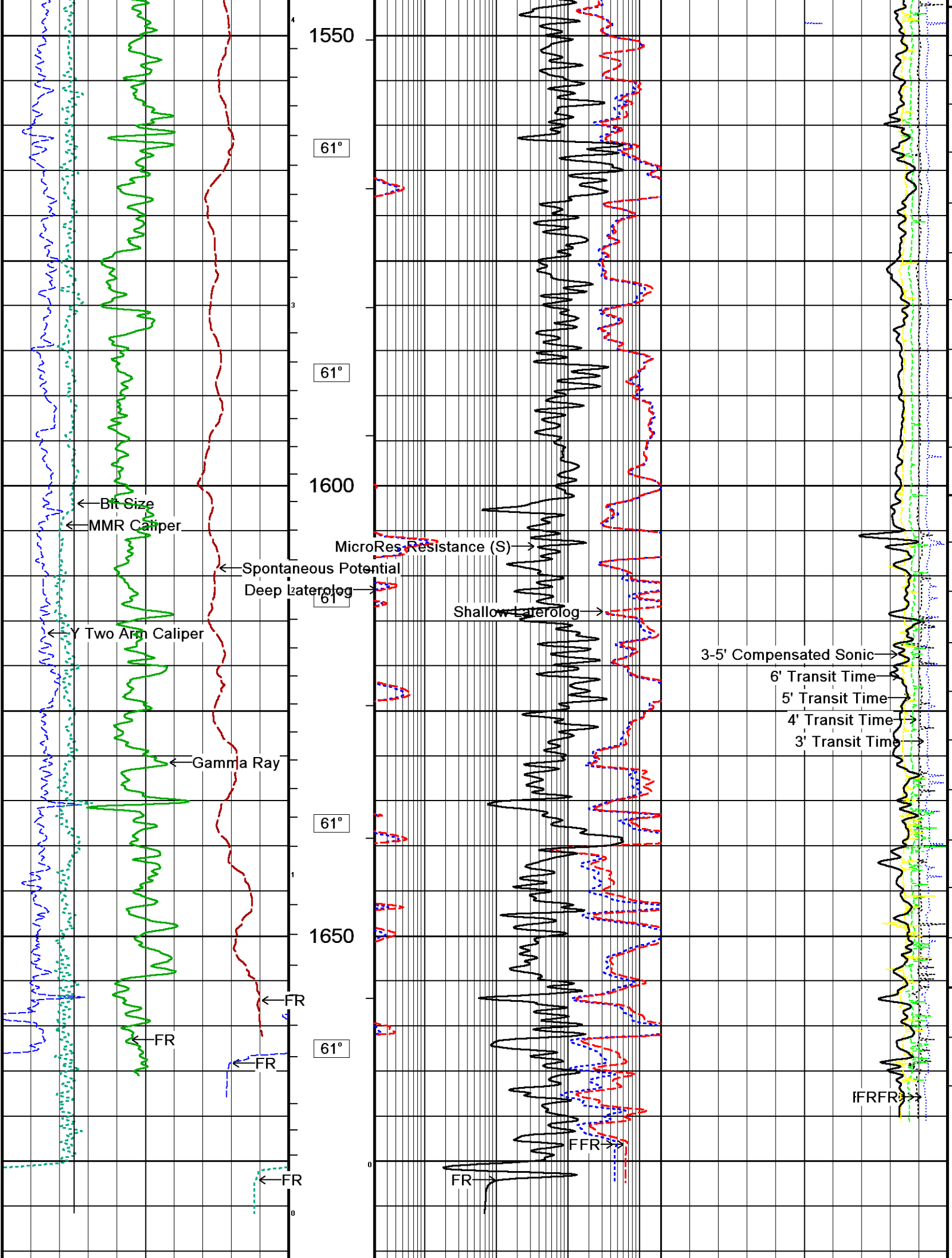


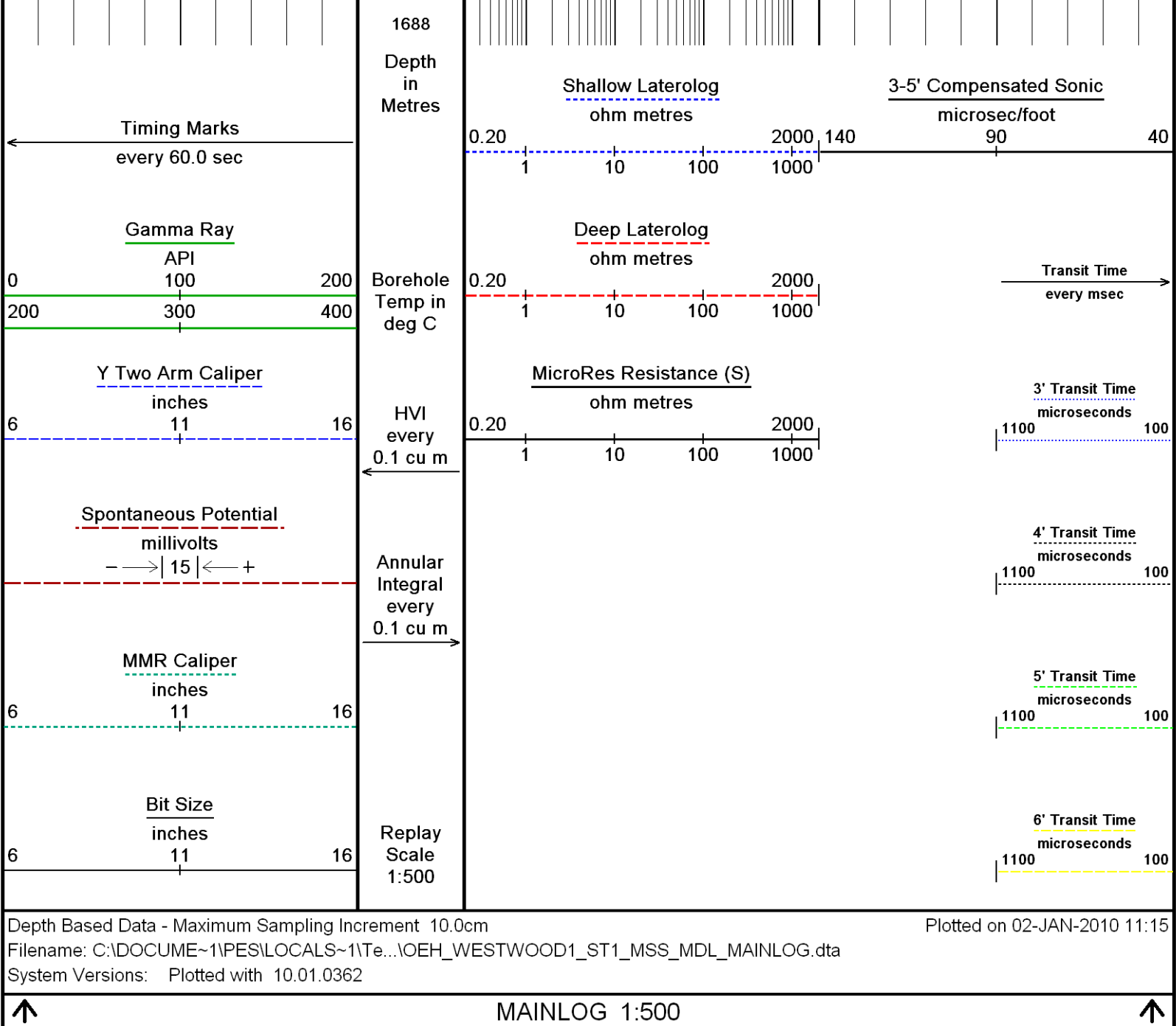












BEFORE SURVEY CALIBRATION

C:\DOCUME~1\PES\LOCALS~1\Temp\Weatherford PreView\0\OEH_WW1_MAINLOG.dta

General Constants All 000

Last Edited on 1-JAN-2010,07:59

General Parameters

Mud Resistivity	0.544	ohm-metres
Mud Resistivity Temperature	25.000	degrees C
Water Level	0.000	metres
Density/Neutron Processing	Wet Hole	

Hole/Annular Volume and Differential Caliper Parameters

HVOL Method	0	
HVOL Caliper 1	Y Two Arm Caliper	
HVOL Caliper 2	None	
Annular Volume Diameter	7.000	inches
Caliper for Differential Caliper	Y Two Arm Caliper	

Rwa Parameters

Porosity used	Wyllie Lime. Sonic Por.
Resistivity used	Deep Laterolog

DOWNHOLE EQUIPMENT

C:\DOCUME~1\PES\LOCALS~1\Temp\Weatherford PreView\0\OEH_WW1_MAINLOG.dta

MCC-A 11C Tension Cablehead

MCC 1 Length: 0.73 m Weight: 19.8 lb

11C-11B MTA-A Compact Tool Adaptor

MTA 1 Length: 0.47 m Weight: 13.2 lb

Compact Stiff Bridle Electrode Sub.

MBE 23 Length: 3.76 m Weight: 77.2 lb

Compact Stiff Bridle Electrode Sub.

MBE 54 Length: 3.76 m Weight: 77.2 lb

Compact Gamma

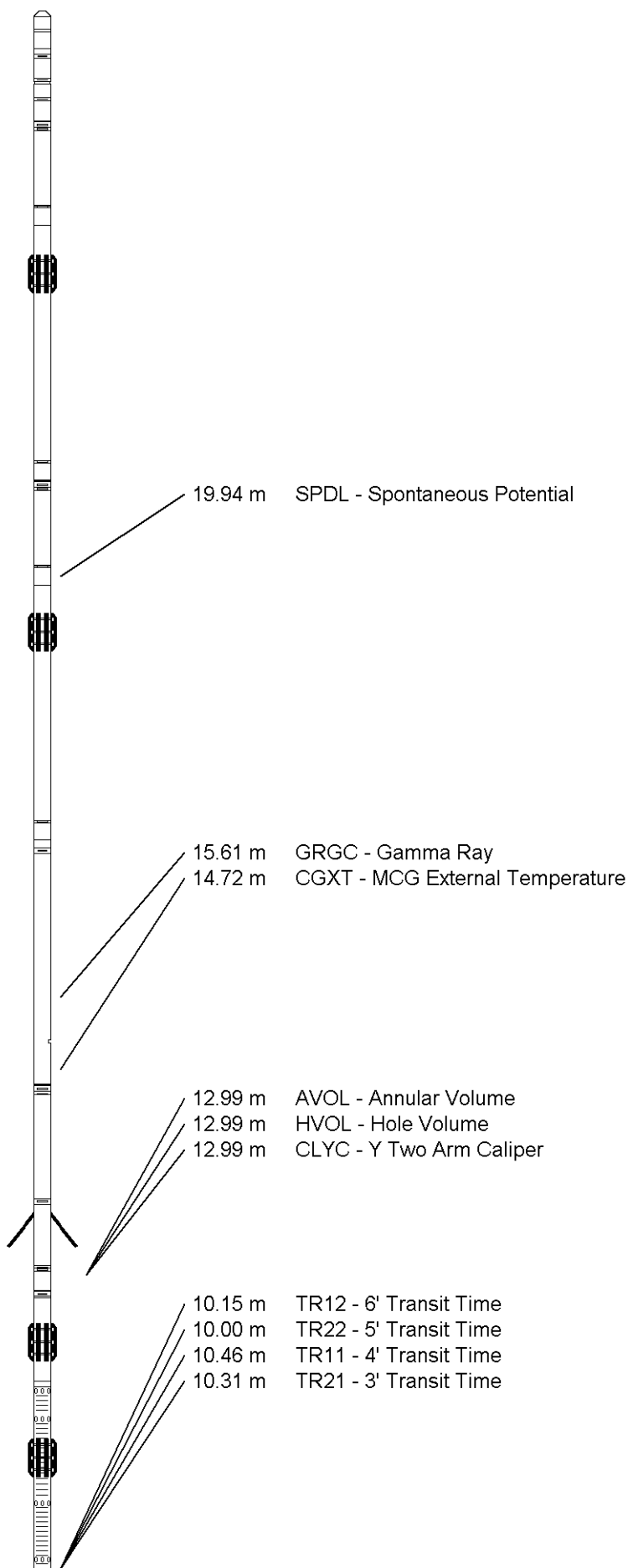
MCG 43 Length: 2.65 m Weight: 63.9 lb

Compact Two Arm Caliper

MTC 69 Length: 2.17 m Weight: 61.7 lb

Compact Sonic

MSS 47 Length: 3.82 m Weight: 72.8 lb



Compact Upper Guard Sub.
MUG 5 Length: 2.74 m

Weight: 68.3 lb

Compact Laterolog Electrode Sub.
MLE 107 Length: 3.76 m

Weight: 92.6 lb

Compact Micro-Resistivity
MMR 4 Length: 2.62 m

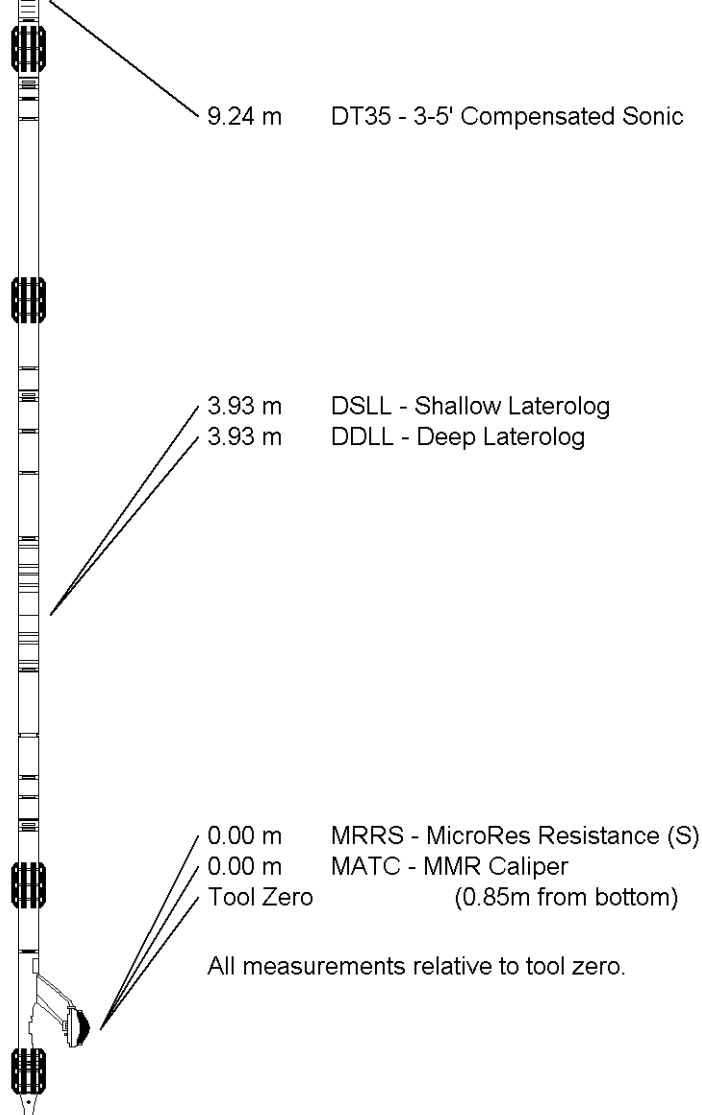
Weight: 81.6 lb

Pressure Bung + Hole Finder
HFS 3 Length: 0.28 m

Weight: 6.6 lb

Total Length: 26.74 m

Weight: 634.9 lb



COMPANY	OEH
WELL	WESTWOOD 1 - ST1
FIELD	N/A
PROVINCE/COUNTY	TASMANIA
COUNTRY/STATE	AUSTRALIA

Elevation Kelly Bushing	metres	First Reading	1677.15	metres	
Elevation Drill Floor	149.00	metres	Depth Driller	1679.00	metres
Elevation Ground Level	145.00	metres	Depth Logger	1678.00	metres



Weatherford®

DUAL LATEROLOG - MLL
COMPENSATED SONIC - TAC
1:500