

PLAN OF MINERAL SURVEY

Situate in the

LAND DISTRICT OF MONTAGU
PARISH OF ZEEHAN

265/39

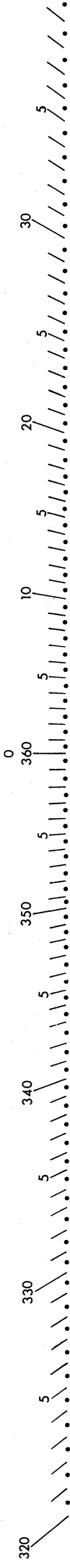
Registered Surveyor K.R. MICHELL

Vicinity of

Mc IVOR HILL

Scale 1:2500

Map Ref. ZEEHAN 1 NORTH



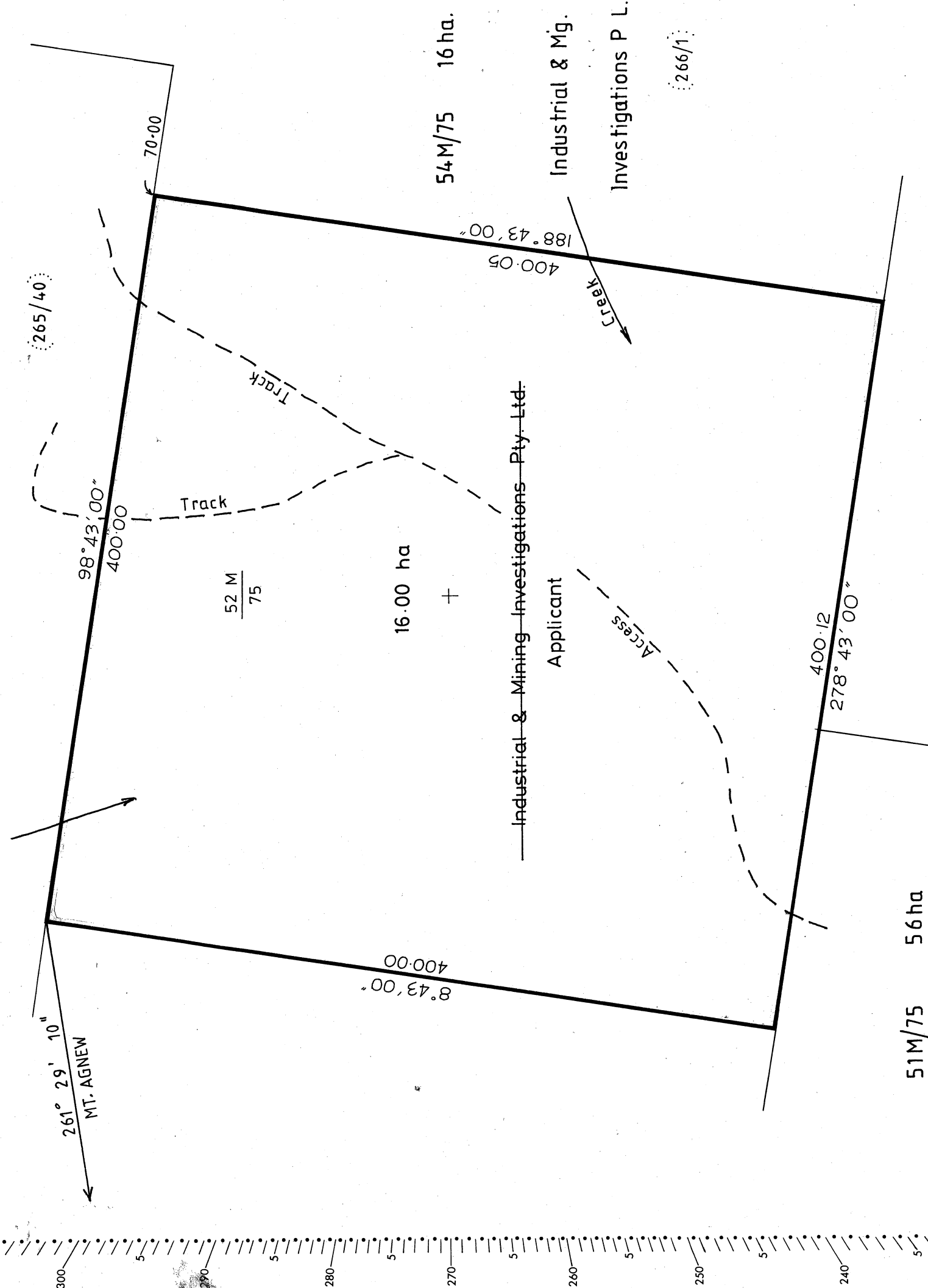
BEARINGS ON A.M.G.

ALL MEASUREMENTS ARE IN METRES

(1) SAVAGE RESOURCES N.L. **CANCELLED**
25 JULY 90

53M/75 56ha.

Industrial & Mining Investigations Pty. Ltd.



Industrial & Mining Investigat's
Pty. Ltd.

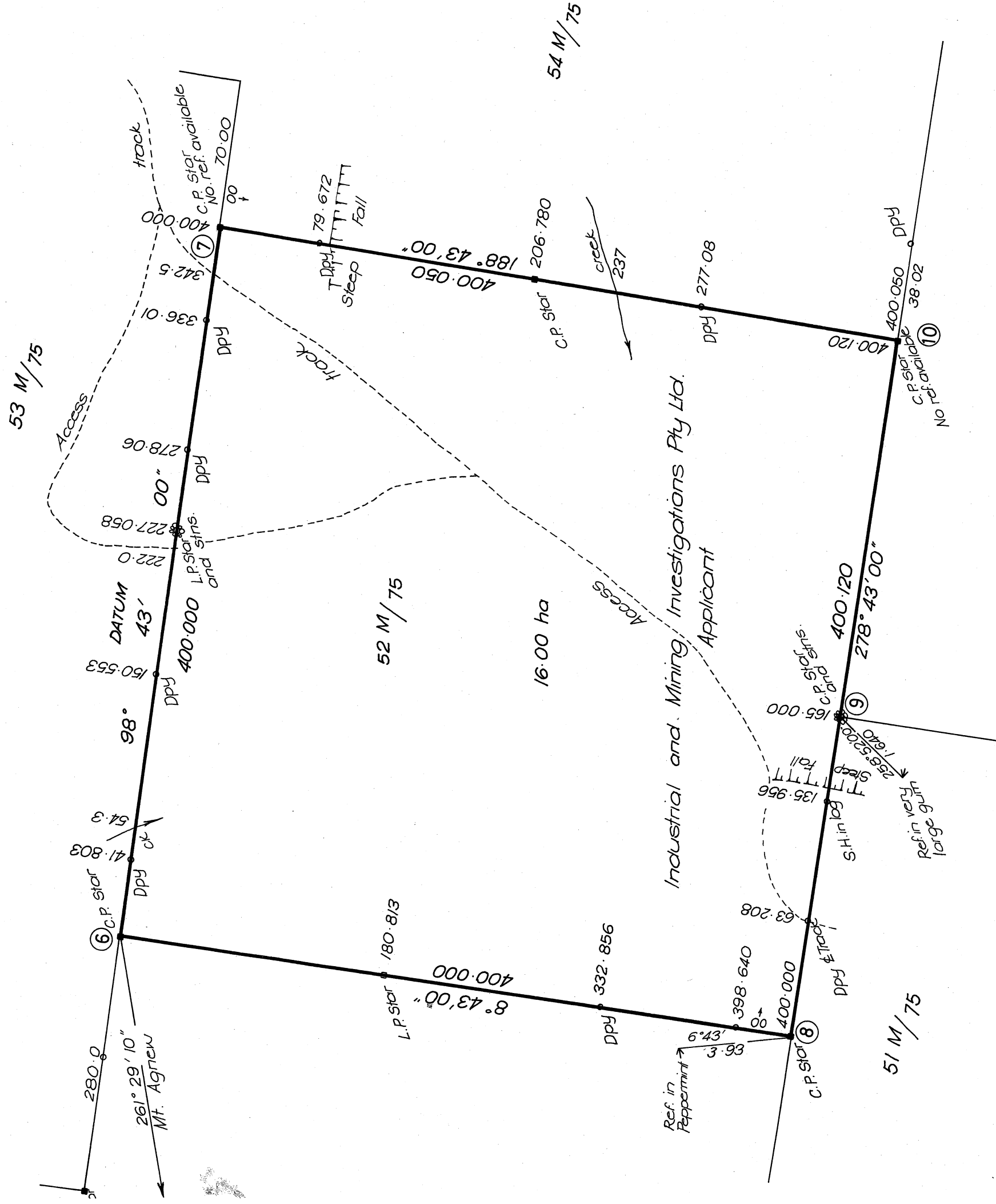
Crown Land

SURVEY NOTES

Preamble:— Field Notes of Survey of Mineral Lease 52 M/75, commencing at the North western corner ⑥ and proceeding easterly and southerly to the north eastern and south western corners respectively.

SOLAR OBSERVATIONS

LATITUDE S 41° 52' 50" STATION No. 1
 LONGITUDE E 145° 15' 50" R.O. Mt. Agnew
 DETERMINED FROM MAP SHEET 79/4
 AZIMUTH 254° 56' 40"
 CONVERGENCE - 1° 09' 32"
 A.M.G BEARING 253° 47' 10"



[Handwritten signature]