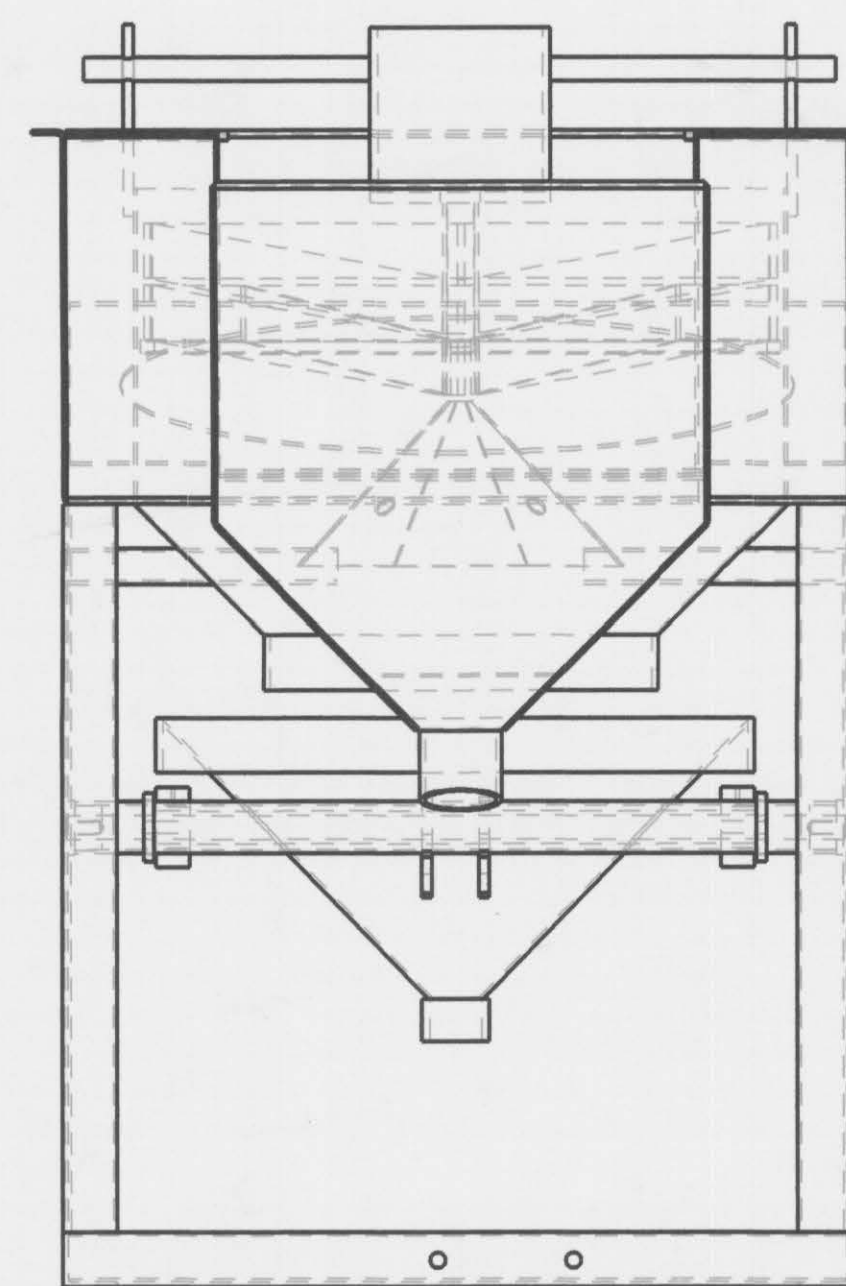
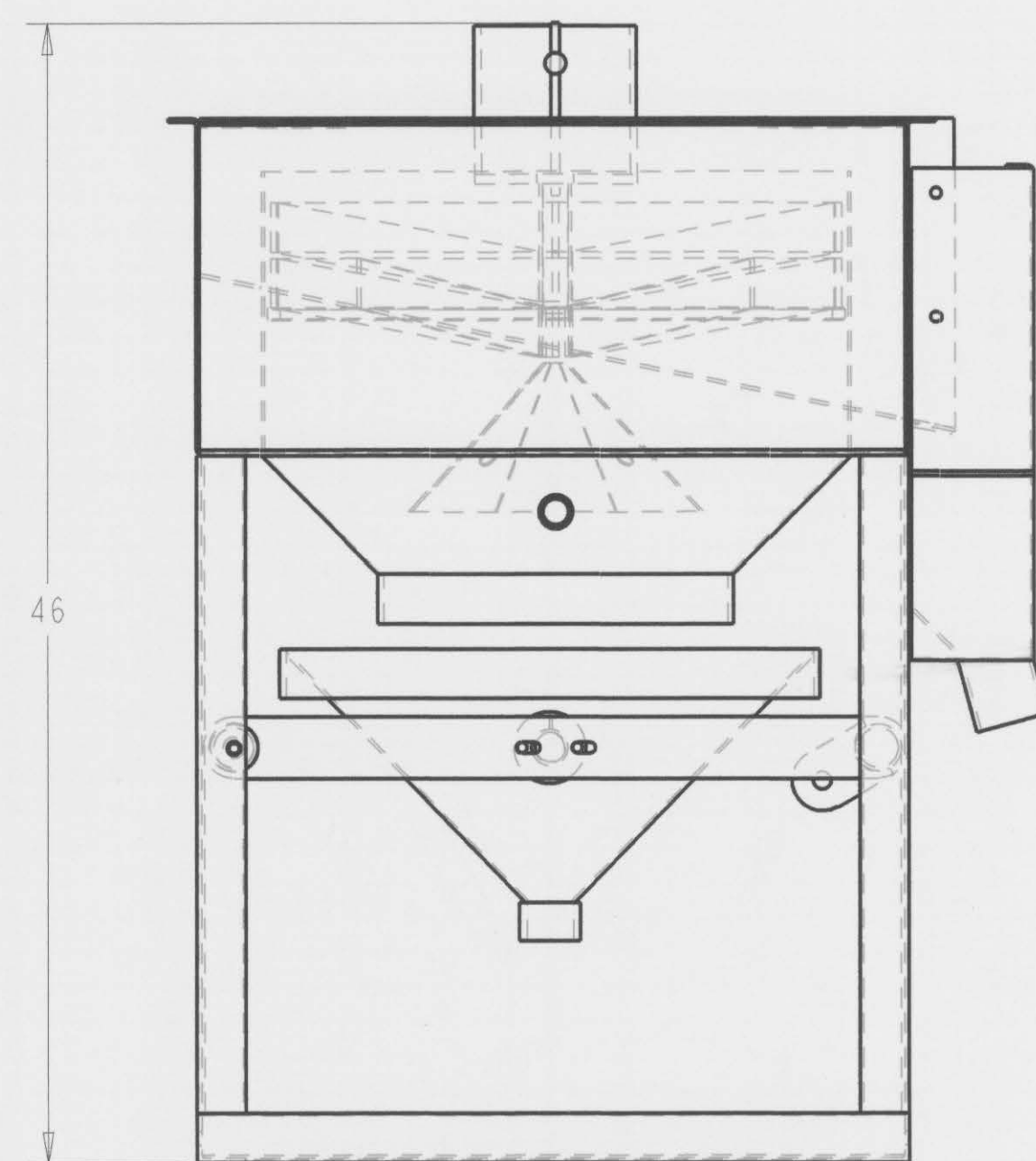


100-FINAL.ASM



1	1	V-BELT - B54	
1	1	STAINLESS STEEL SCREEN - 24" ROUND X 2 MM	
1	1	ECCENTRIC SHEAVE - IB60SK	
1	1	ECCENTRIC BUSHING -SK 1-7/16"	
1	1	DRIVE SHEAVE - IB60SK	
1	1	DRIVE BUSHING SK 3/4"	
2	1	1" PILLOW BLOCK BEARING - P2BSC100	
1	1	GEARBOX -N31015B36.3U566	
1	1	ELECTRIC MOTOR - 2HP/1450/566/415V	
1	1	1-1/2" CHECK VALVE	
1	1	1-1/2" GATE VALVE	
1	1	1-1/2" FLOW METER - F30150P	
1	1	24" RUBBER DIAPHRAGM	
6	1	MOTOR MOUNT ASSEMBLY	
5	1	TAIL CHUTE ASSEMBLY	8
4	1	DISTRIBUTION POT ASSEMBLY	8
3	1	WALKING BEAM WITH LOWER CONE ASSEMBLY	6
2	1	JIG ASSEMBLY	4
1	1	FRAME ASSEMBLY	2
ITEM	QTY	DESCRIPTION - MATERIAL	REF DRAWING
THIS DRAWING IS PROTECTED BY U.S. COPYRIGHT LAW. ANY REPRODUCTION WITHOUT WRITTEN CONSENT OF GOLDFIELD INTERNATIONAL IS PROHIBITED.			
		GOLDFIELD INTERNATIONAL	
APPROVALS		DATE	100-FINAL
DRAWN BY J. POTTER		06/19/07	FRAME ASSEMBLY
ENGINEER		06/19/07	24" ROUND JIG
RELEASED TO PRODUCE		06/19/07	
REV. REL.		06/19/07	
OTHER		06/19/07	
A		24" JIG-100-FINAL	SCALE
VAN DIEMAN		1	10
SUPERSEDES			