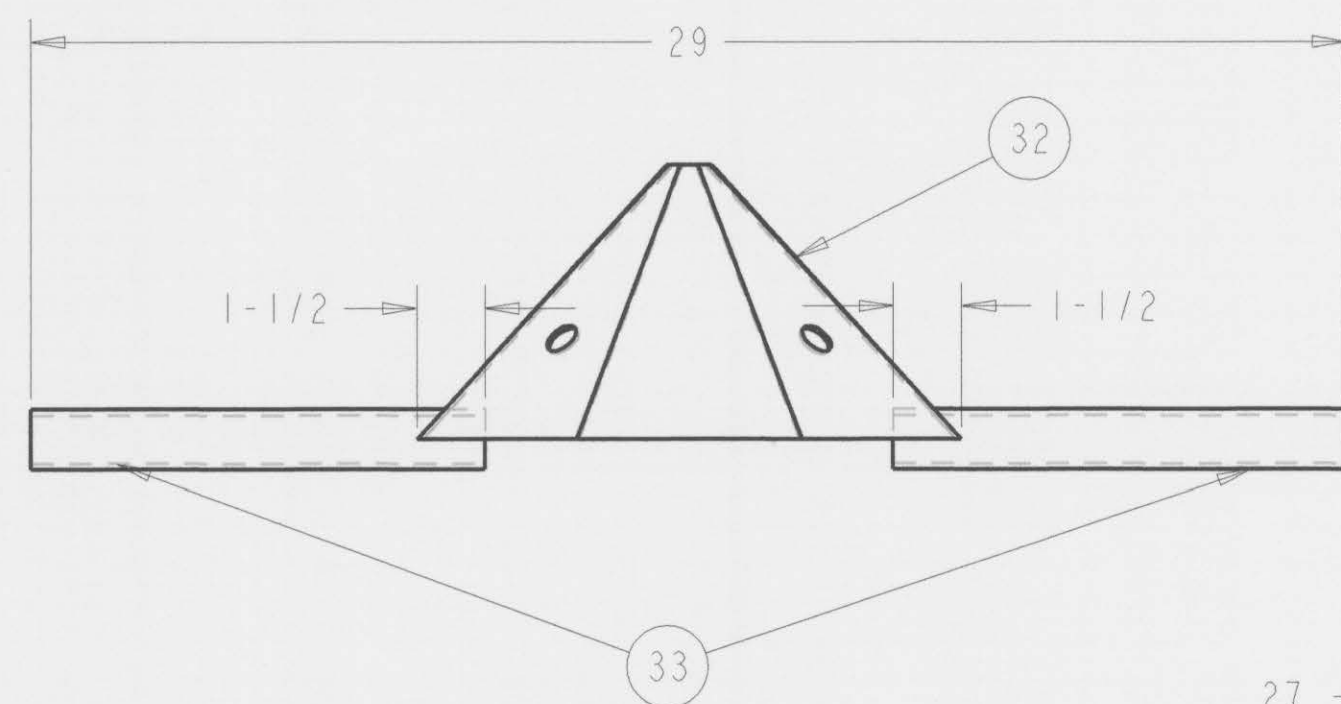
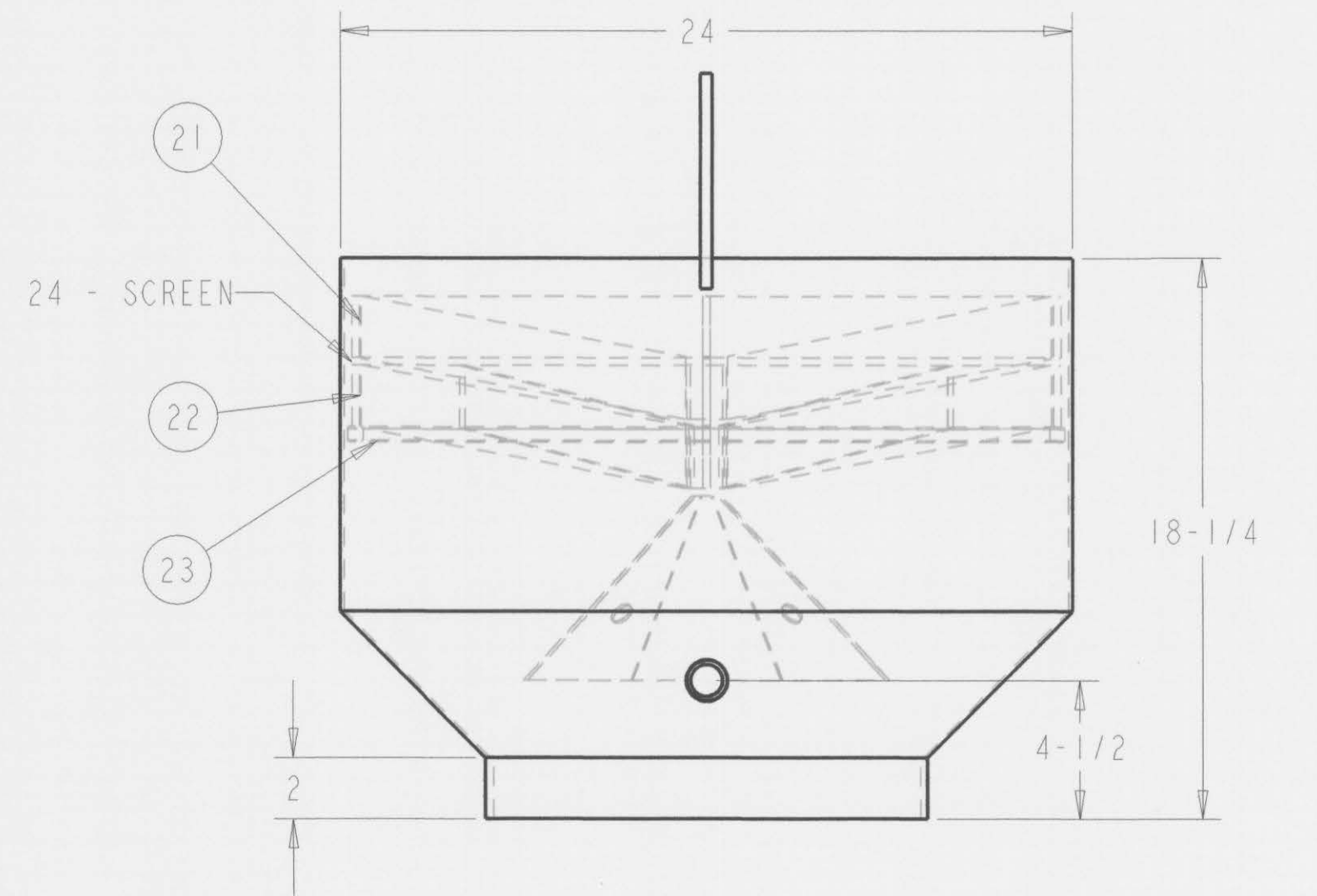
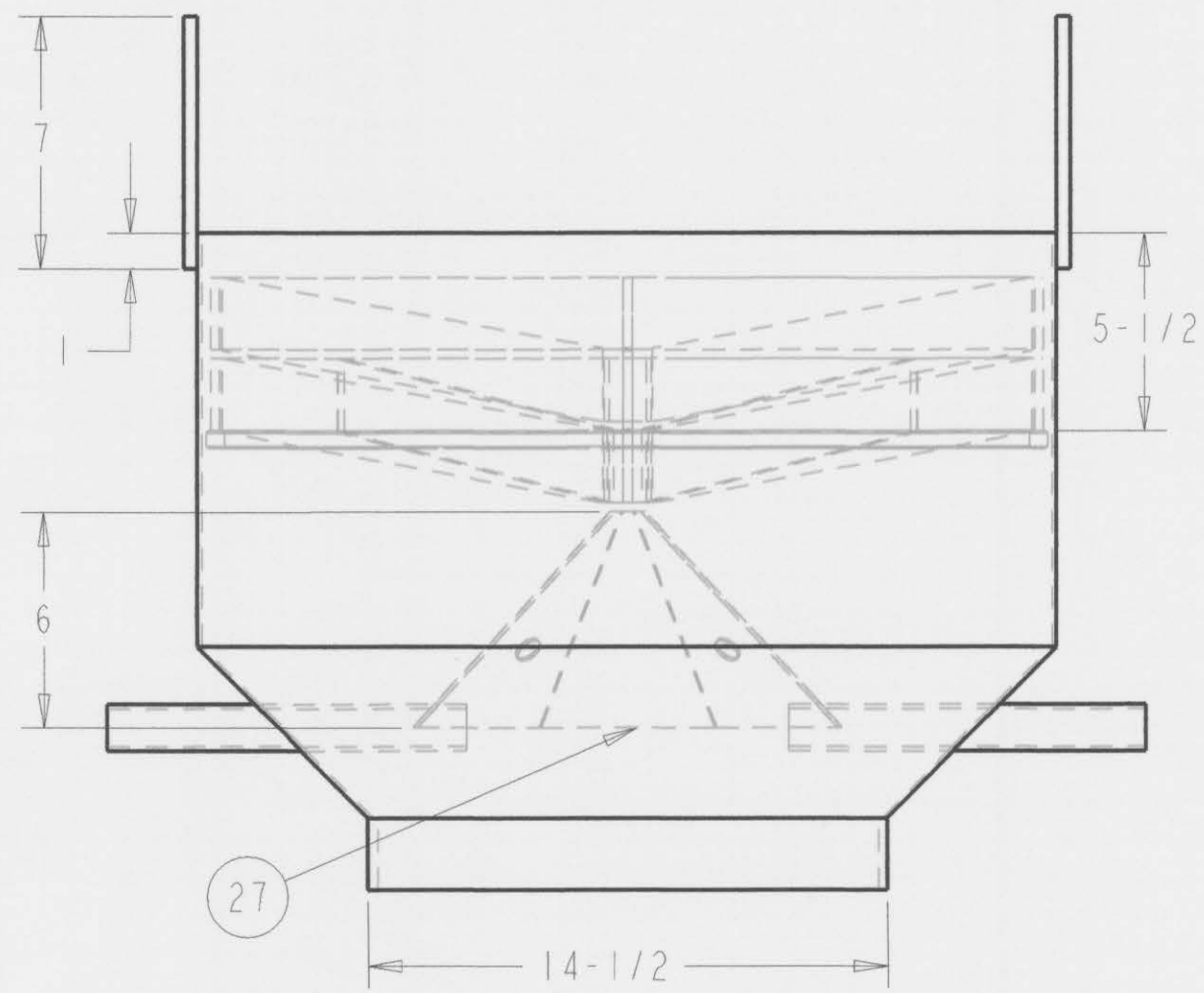
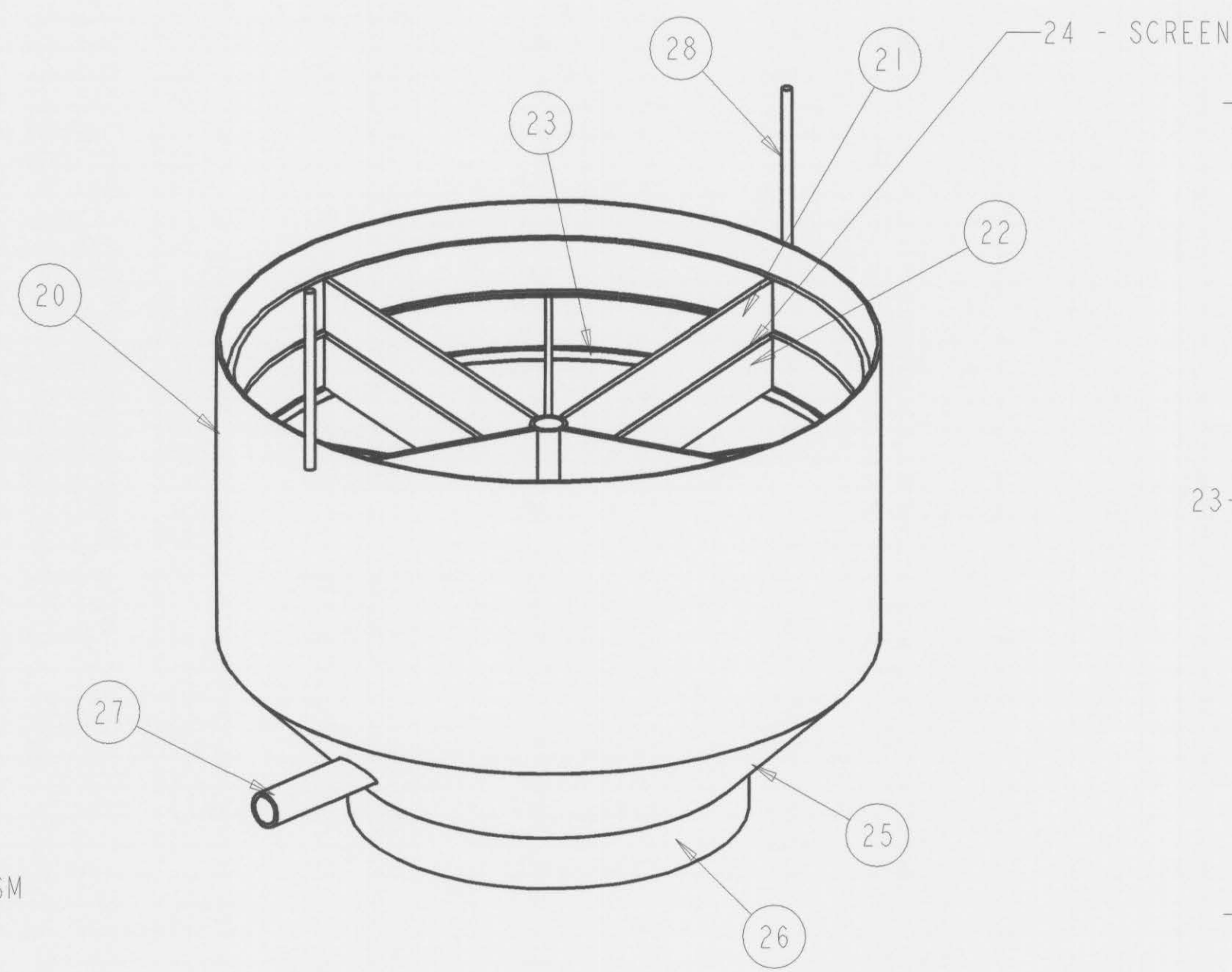
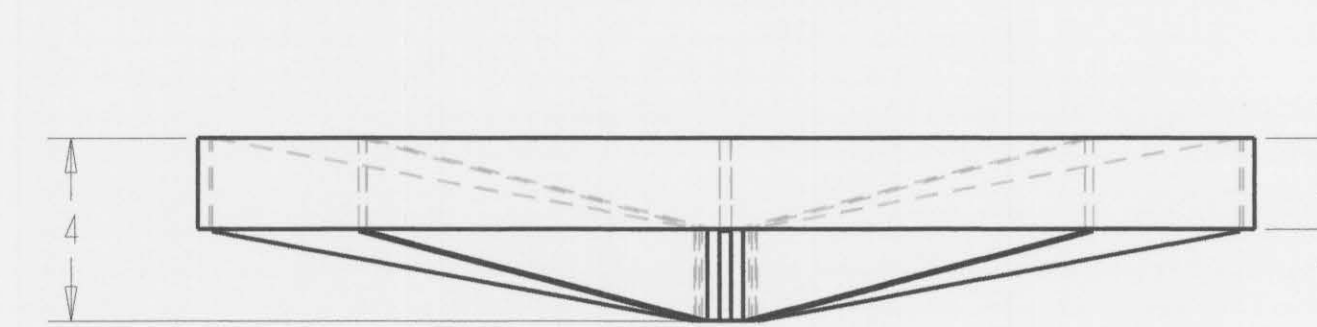
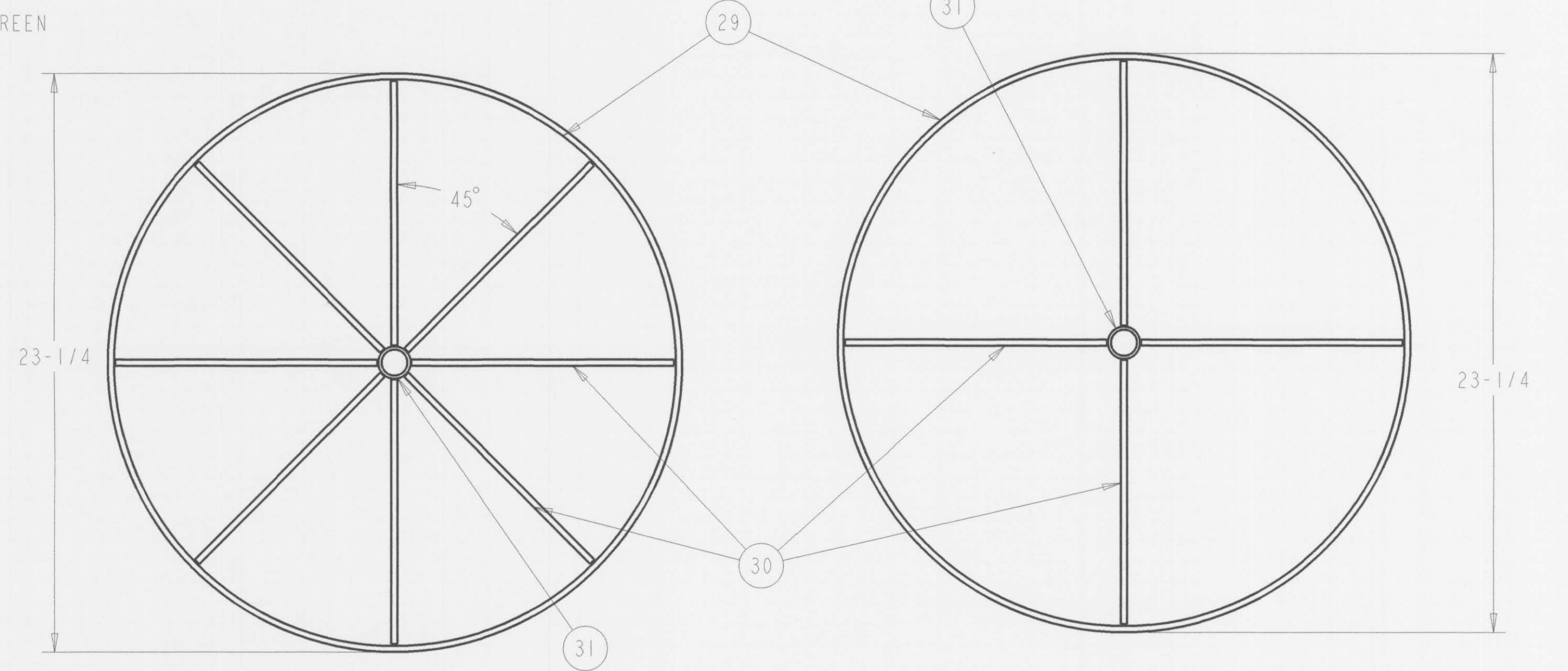
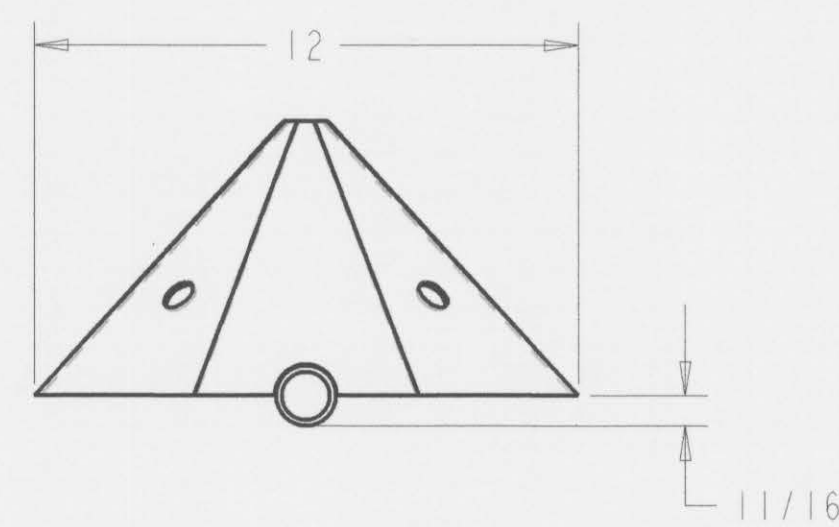


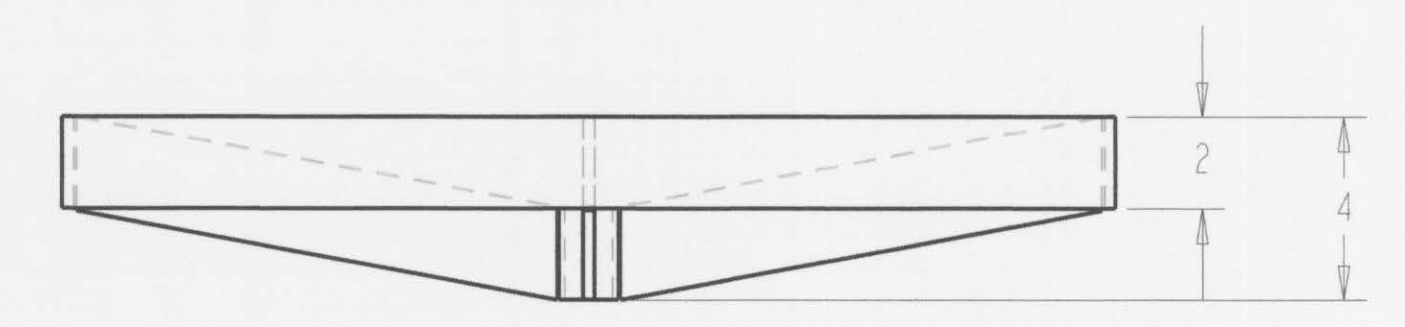
2 - 120-JIG.ASM



27 - 125-UPPER\_CONE.ASM



21 - 155-BOTTOM\_TRAY.ASM



22 - 160-TOP\_TRAY.ASM

33	2	1-1/2" SCH 40 PIPE X 10"	5
32	1	10 GA INNER CONE (FLAT LAYOUT ON PAGE 10)	5, 10
31	2	1" SCH 40 PIPE X 2"	5
30	12	1/4" F BAR X 2" X 11-3/16"	5
29	2	1/4" F BAR X 2" X 73-1/16" FLAT	5
28	2	3/8" ALL THREAD X 7"	5
27	1	UPPER CONE ASSEMBLY	4
26	1	1/4" F BAR X 2" X 45-9/16" FLAT	5
25	1	10 GA CONE (FLAT LAYOUT ON PAGE 10)	5, 10
24	1	24" ROUND SCREEN X 2 MM	5
23	1	1/2" SQ TUBING X .095 WALL X 73-13/16" FLAT	5
22	1	TOP TRAY ASSEMBLY	4
21	1	BOTTOM TRAY ASSEMBLY	4
20	1	10 GA X 11-1/2" X 75-3/8" FLAT	5
2	1	JIG ASSEMBLY	4
ITEM	QTY	DESCRIPTION - MATERIAL	REF DRAWING

THIS DRAWING IS PROTECTED BY U.S. COPYRIGHT LAW. ANY REPRODUCTION WITHOUT WRITTEN CONSENT OF GOLDFIELD INTERNATIONAL IS PROHIBITED.		<b>GOLDFIELD INTERNATIONAL</b>	
<b>APPROVALS</b> DRAWN: J POTTER CHECKED: RELEASE TO PROG: REV: 007 OFFER:		<b>DATE</b> 06/20/07 <b>DESCRIPTION</b> 24" ROUND JIG <b>SCALE</b> 4" = 1'-0" <b>SIZE</b> D <b>DATE</b> 06/20/07 <b>REV</b> 007 <b>OFFER</b>	