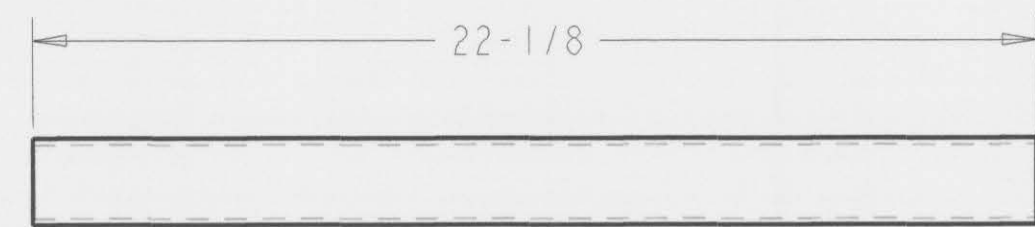


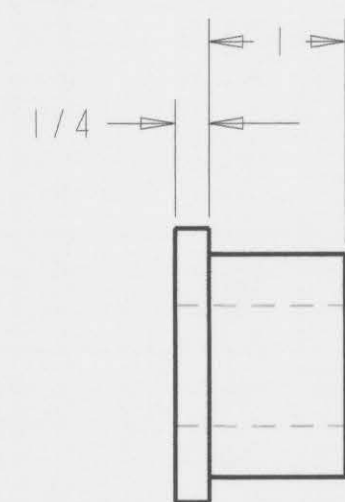
34 - 120



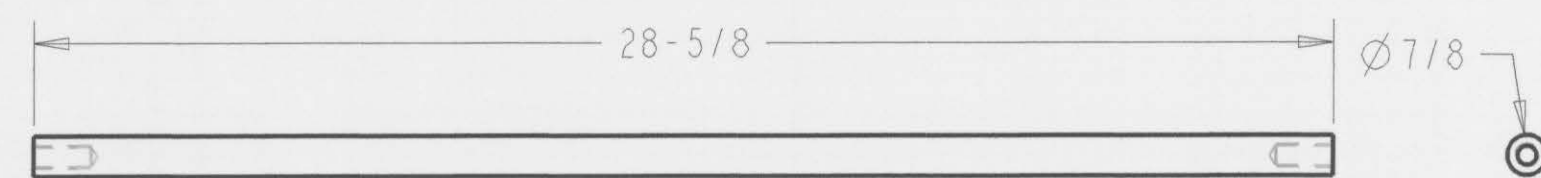
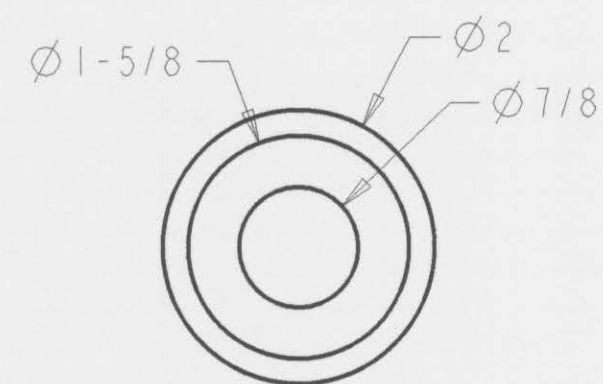
35 - 122



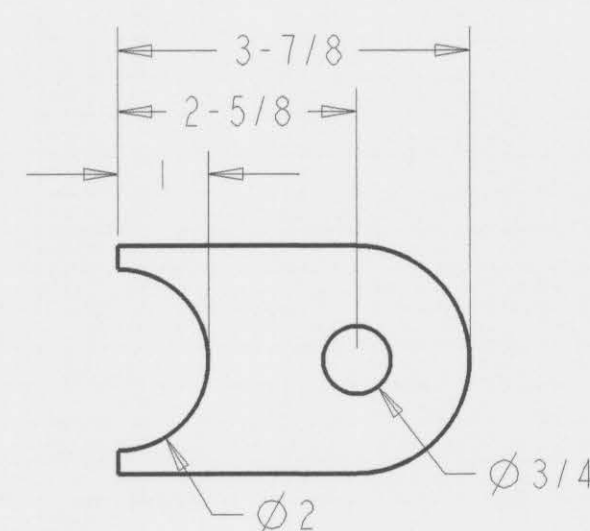
36 - 121



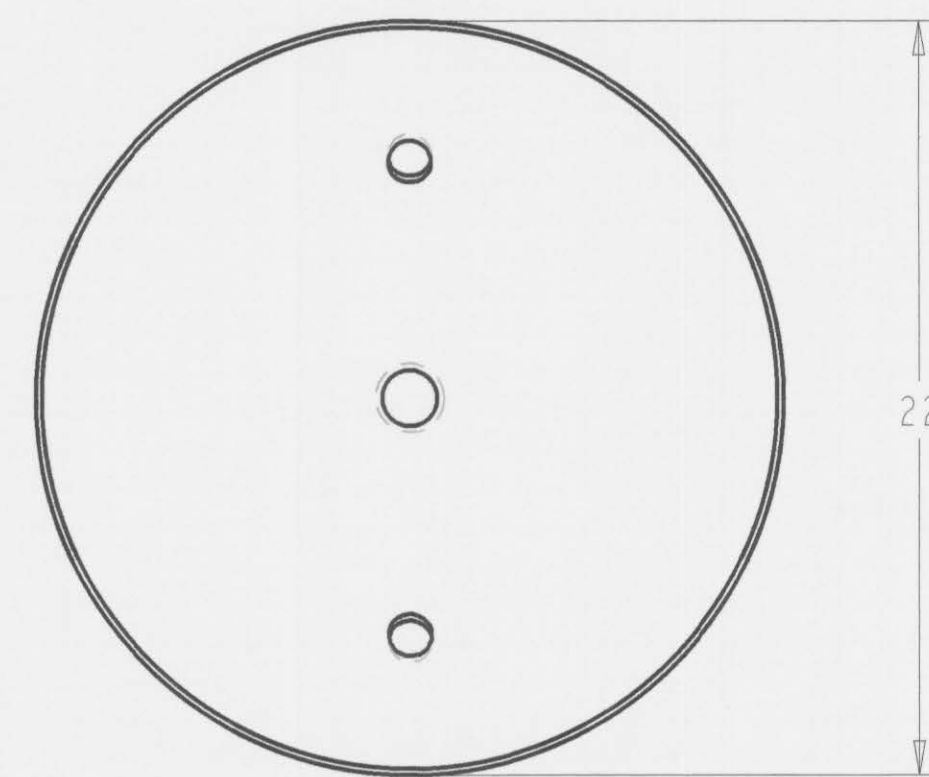
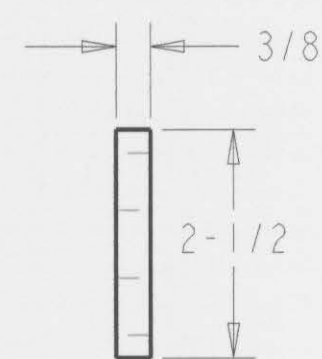
37 - 126



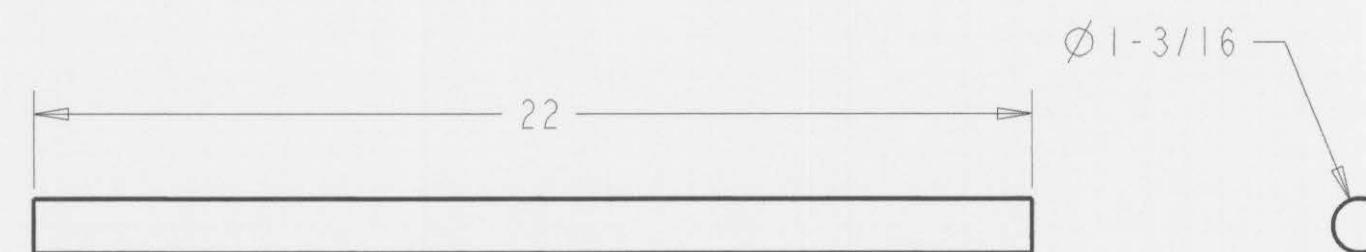
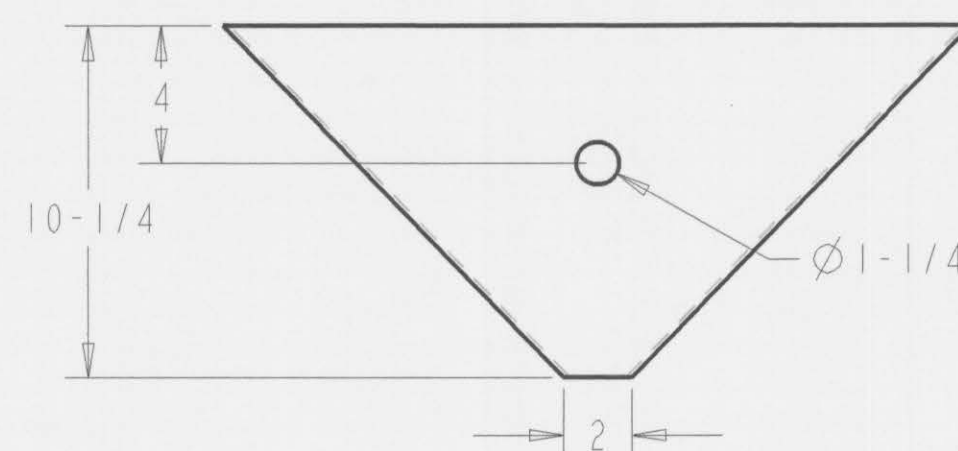
38 - 127



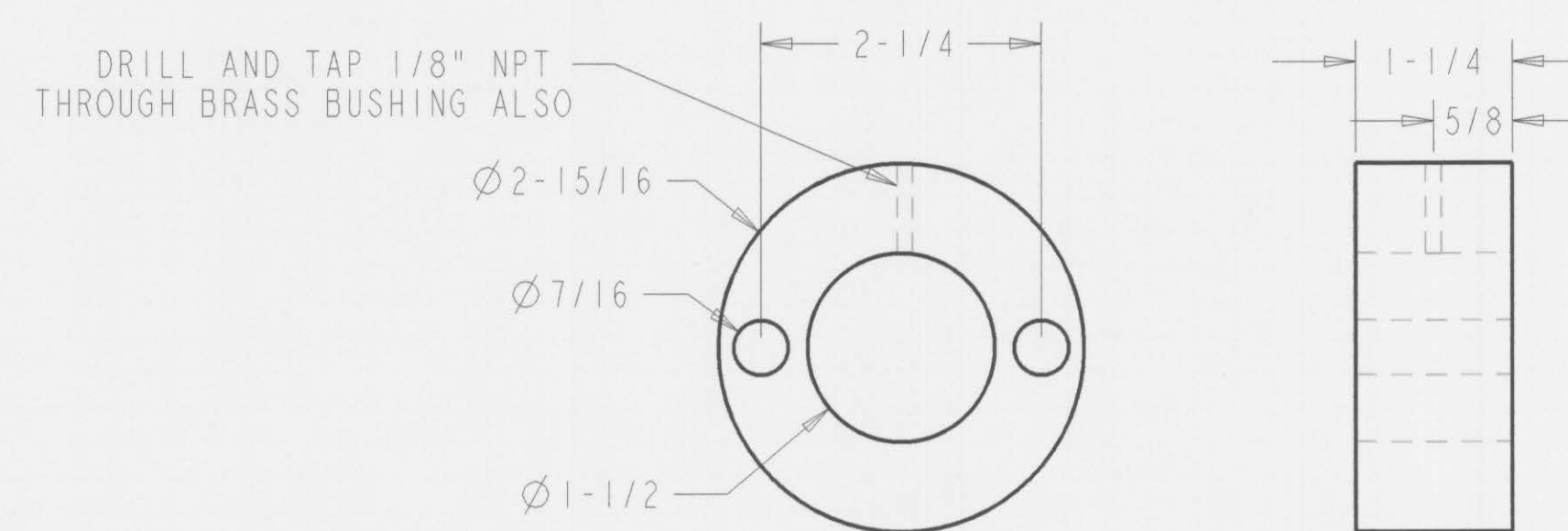
39 - 123



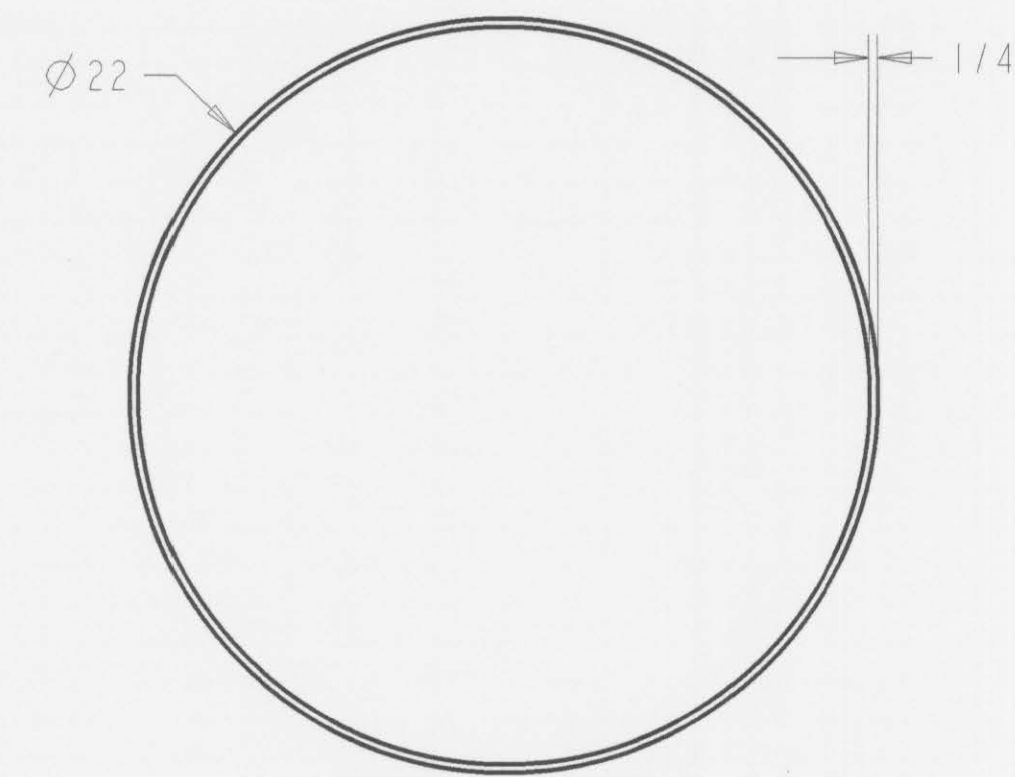
41 - 116



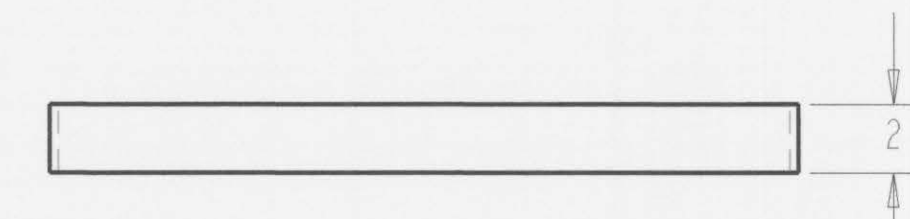
43 - 119



44 - 124



42 - 117



44	2	2-15/16" CRS X 1-1/4"	7
43	1	1-3/16" CRS X 22"	7
42	1	1/4" F BAR X 2" X 69-1/8" FLAT	7
41	1	BRASS BUSHING 1-1/2" OD X 1-3/16" ID X 1-1/4"	7, 10
39	2	3/8" X F BAR X 2-1/2" X 3-7/8"	7
38	1	7/8" CRS X 28-5/8"	7
37	2	BRASS BUSHING 2" OD X 7/8" ID X 1-1/4"	7
36	1	1-1/2" SCH 40 PIPE X 28"	7
35	1	1-1/2" SCH 40 PIPE X 22-1/8"	7
34	2	3/8" F BAR X 2-1/2" X 28-3/4"	7
ITEM	QTY	DESCRIPTION - MATERIAL	REF DRAWING

THIS DRAWING IS PROTECTED BY U.S. COPYRIGHT LAW AND REPRODUCTION WITHOUT WRITTEN CONSENT OF GOLDFIELD INTERNATIONAL IS PROHIBITED.		GOLDFIELD INTERNATIONAL	
APPROVALS	DATE	WALKING BEAM/LOWER CONE	
DESIGNER J. POTTER	06/20/07	PARTS LIST	
ENGINEER		24" ROUND JIG	
RELEASE TO PROD			
REV. REL			
OTHER			
REV	DATE	SCALE	SIZE
A	06/20/07	1:100-FINAL	D
DESIGNED BY VAN DIEMAN		PAGE 7 OF 10	SUPERSEDED