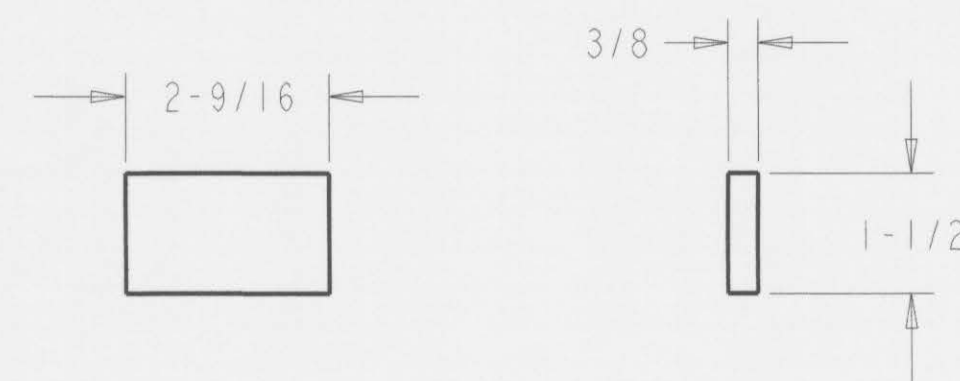
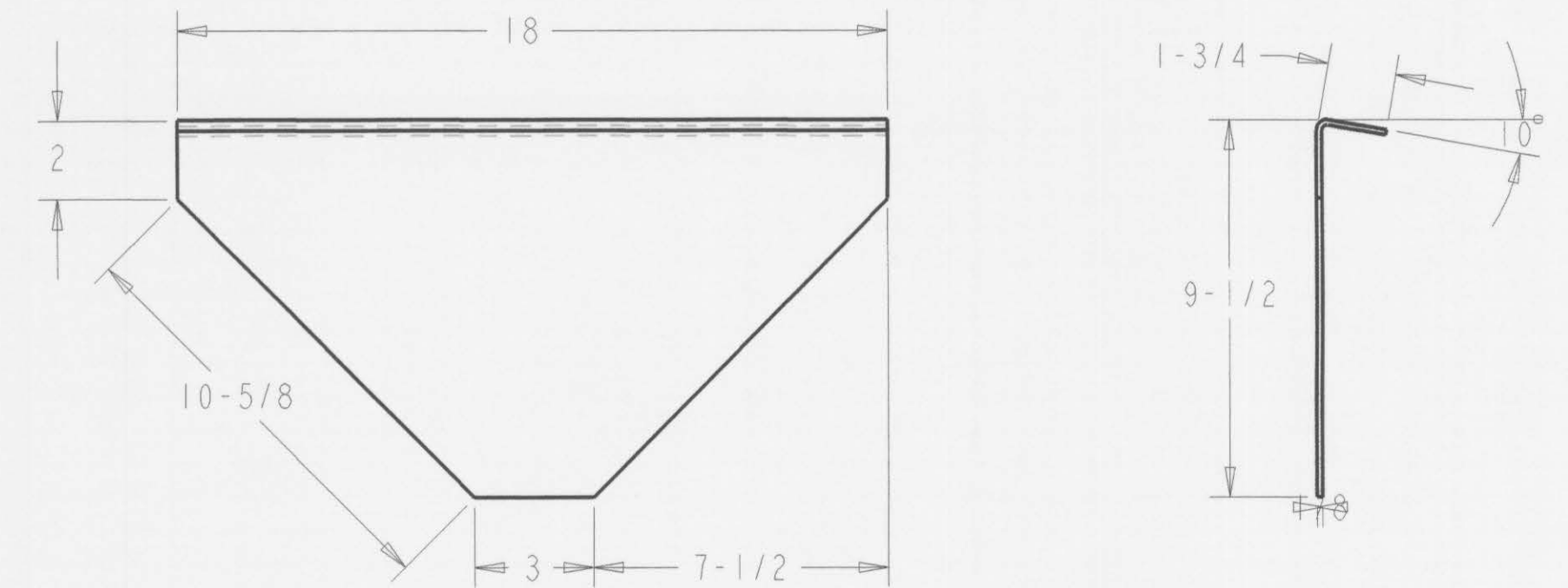


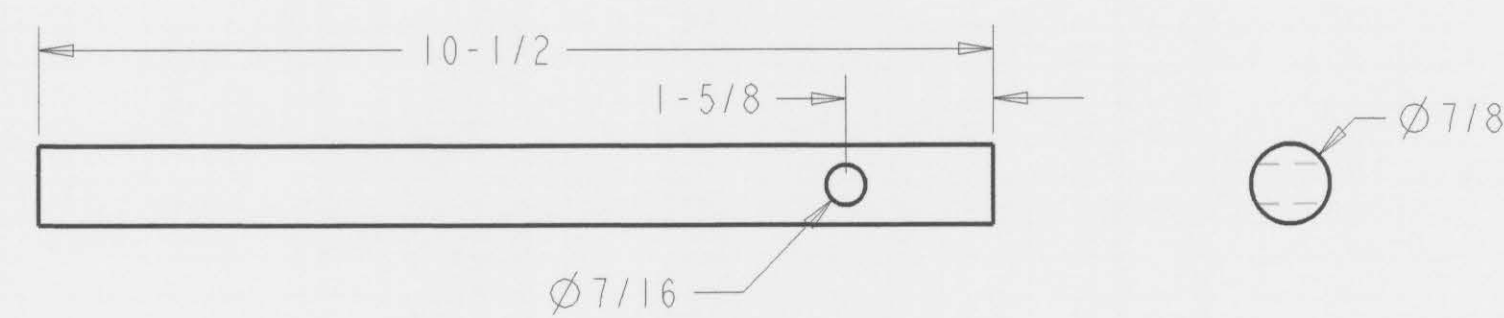
47 - 143



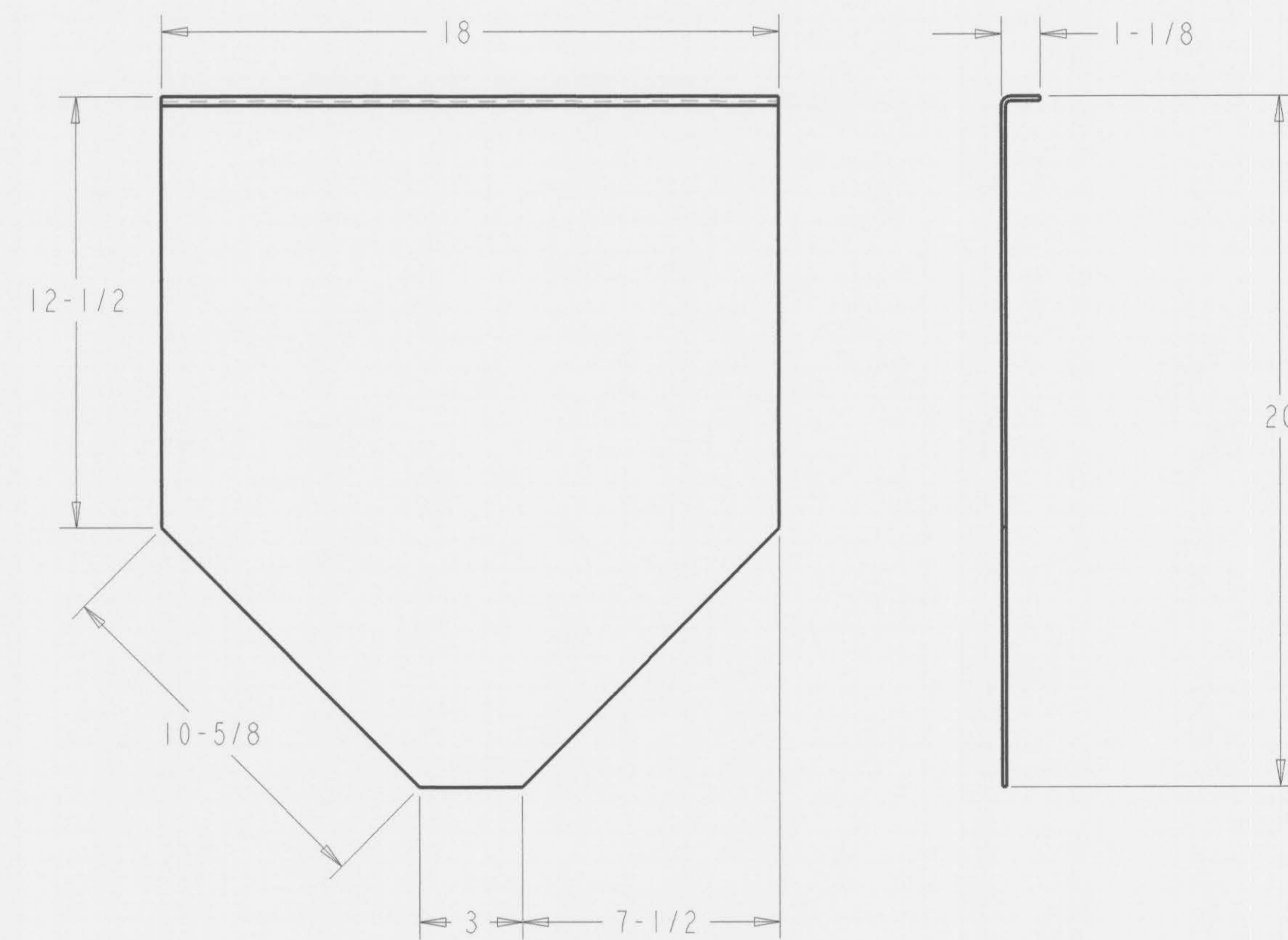
52 - 145



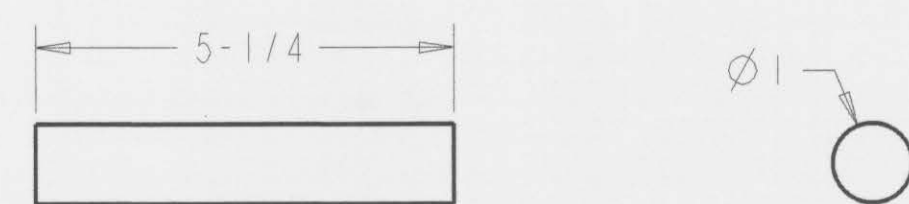
56 - 154



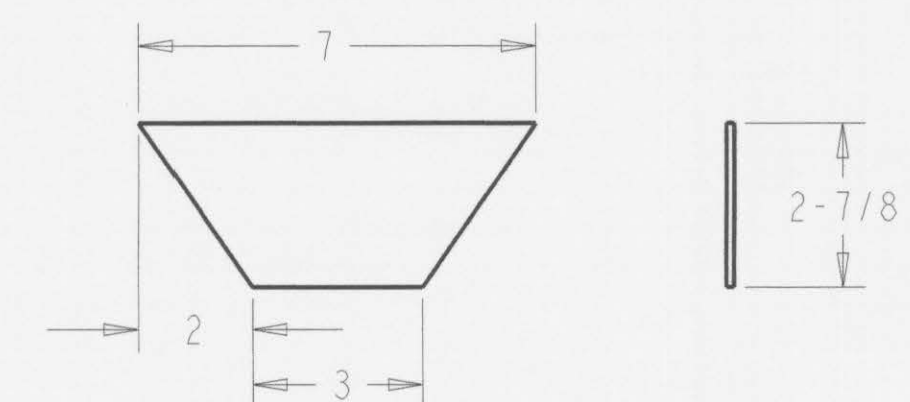
48 - 147



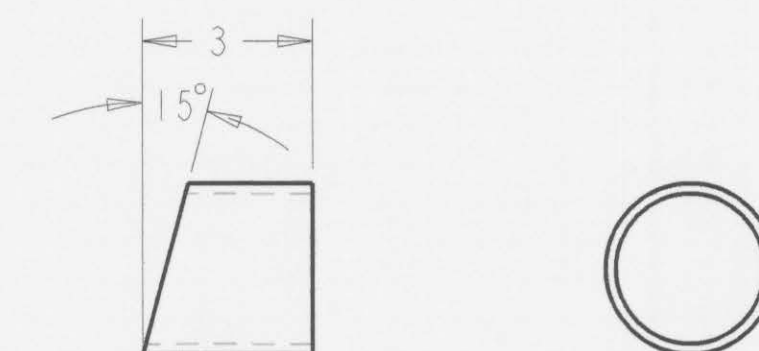
53 - 152



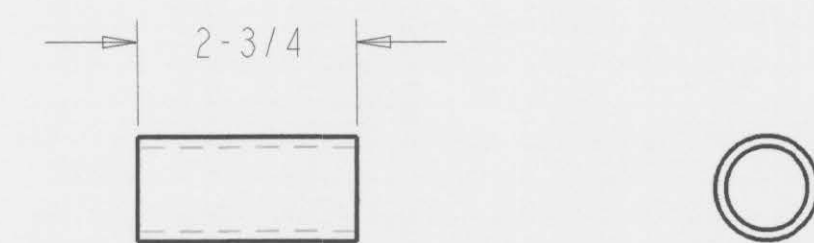
49 - 148



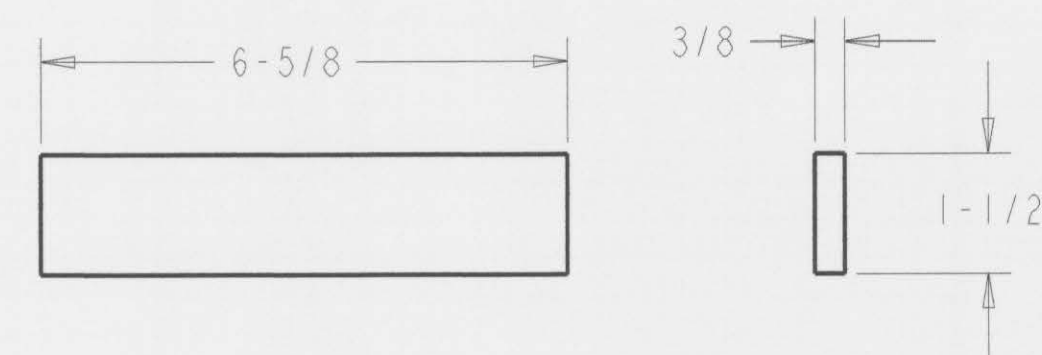
57 - 156



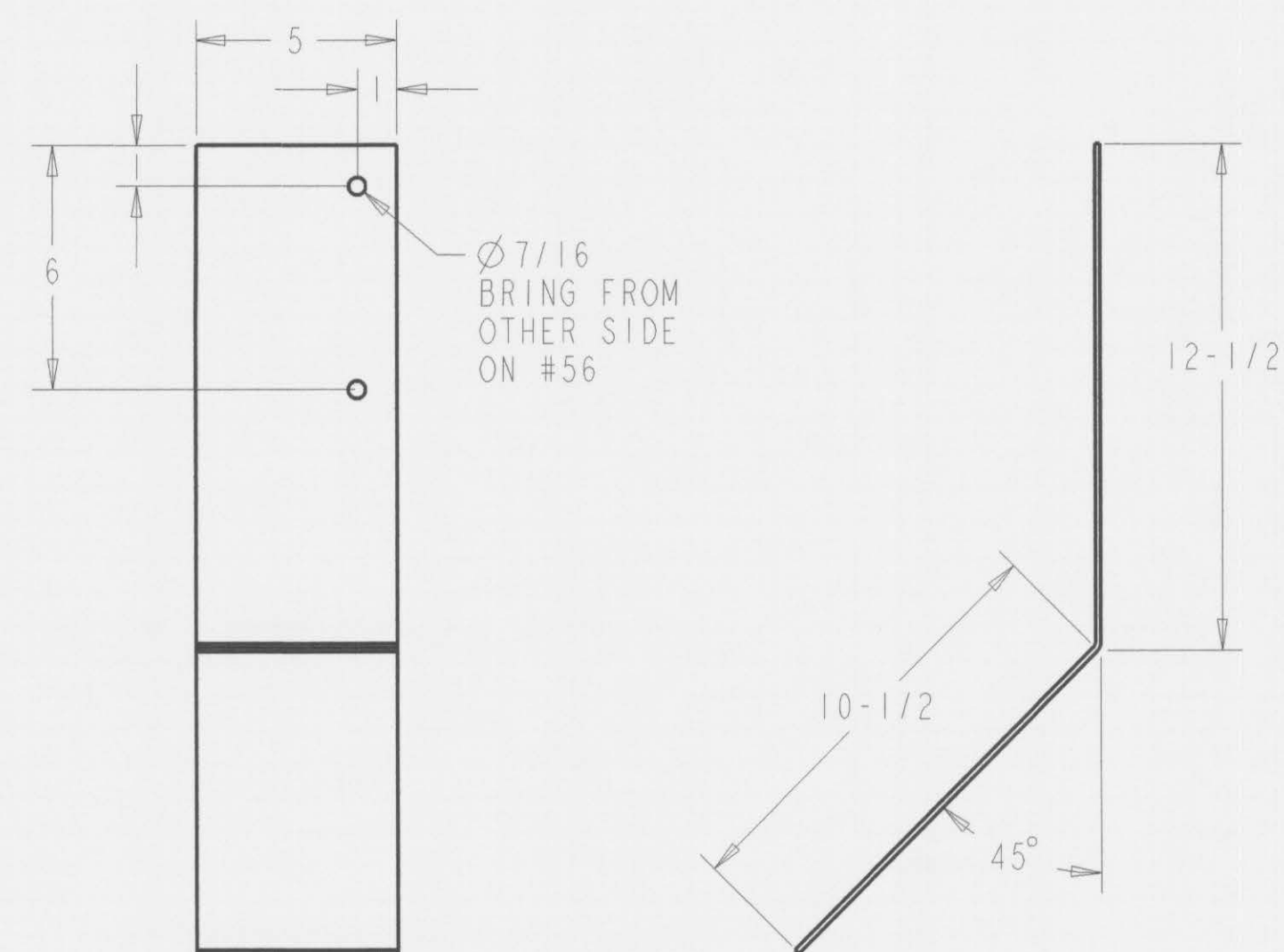
58 - 155



50 - 146



51 - 144



54 - 153  
55 - 153\_OPP

58	1	3" HALF HOSE MENDER CUT AT 15°	9
57	1	10 GA X 7" X 2-7/8"	9
56	1	10 GA X 11-1/8" X 18"	9
55	1	10 GA X 23" X 5"	9
54	1	10 GA X 23" X 5"	9
53	1	10 GA X 21" X 18"	9
52	2	3/8" F BAR X 1-1/2" X 2-9/16"	9
51	1	3/8" F BAR X 1-1/2" X 6-5/8"	9
50	1	1" SCH 40 PIPE X 2-3/4"	9
49	1	1" SCH 40 PIPE X 5-1/4"	9
48	2	7/8" CRS X 10-1/2"	9
47	1	6" SCH 40 PIPE X 6"	9
ITEM	QTY	DESCRIPTION - MATERIAL	REF DRAWING
THIS DRAWING IS PROTECTED BY U.S. COPYRIGHT LAW. ANY REPRODUCTION WITHOUT WRITTEN CONSENT OF GOLDFIELD INTERNATIONAL IS PROHIBITED.			
GOLDFIELD INTERNATIONAL			
DISTRIBUTION POT AND TAIL CHUTE PARTS LIST			
4" ROUND JIG			
APPROVALS	DATE		
U. POTTER	06/21/07		
ENGINEER	##/##/##		
RELEASE TO PROD	##/##/##		
REV. REL	##/##/##		
OTHER	##/##/##		
		PROJECT	SIZE
		100-FINAL	D
		VAN DIEMAN	
		9	10
		007	SUPERSEDED