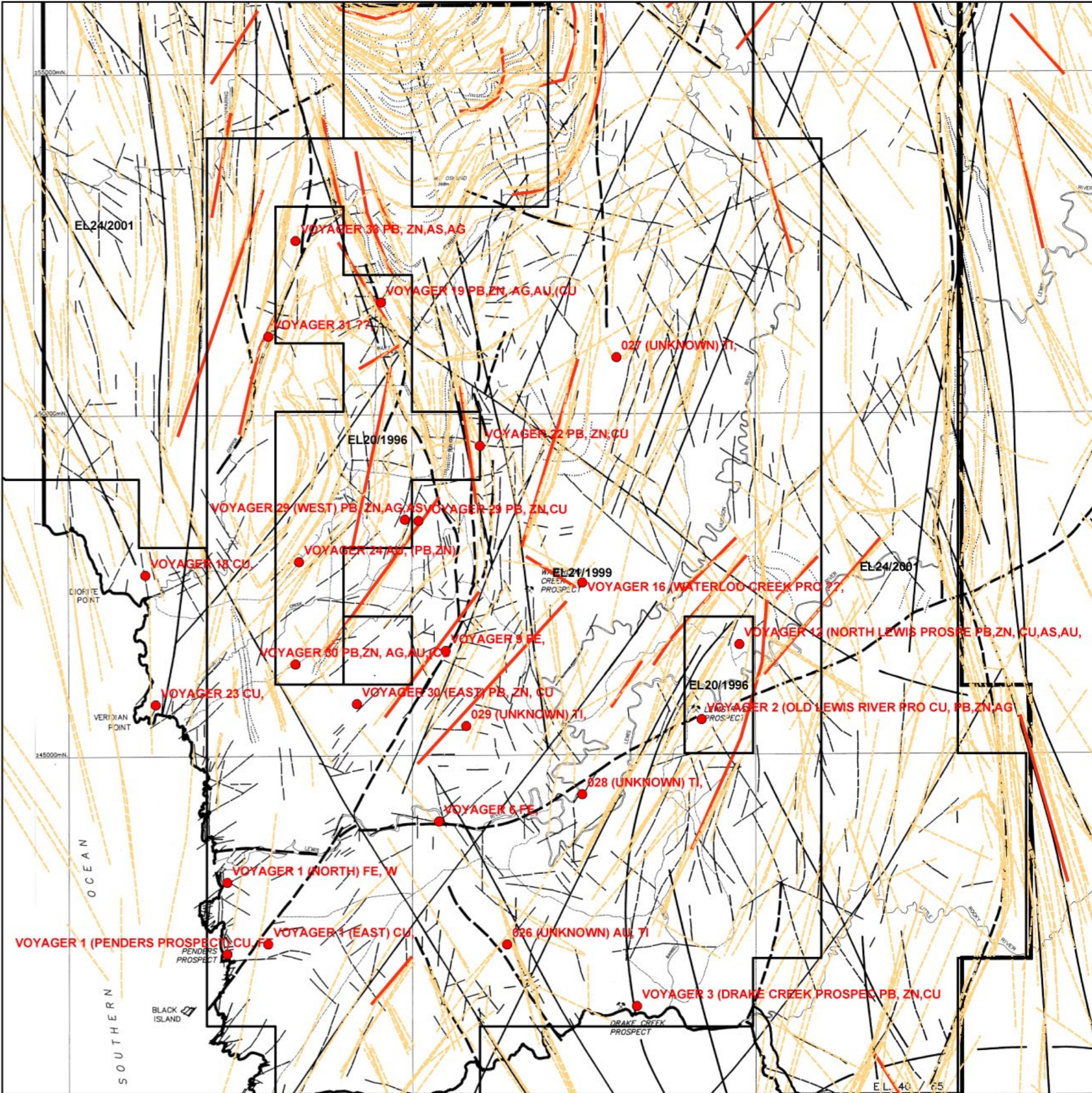


Elliott Bay, SW Tasmania, Australia.

High end radiometric (3 band) linears.



View extents as for main map. Map of linears from Torrey et al., Cyprus Gold Australia Co., TCR88-2853 (held by Mineral Resources Tasmania). Red lines shown are those interpreted from main the image. Light orange dashed linears are those interpreted from other datasets processed during the course of this investigation. Mineral deposits shown are from Mineral Resources Tasmania (MIRLOCH database). Map shows clear differences between previously interpreted linears and those interpreted using more recent data.

- Legend**
- Drill hole locations
 - High end radiometric linears (shown red on inset)
- | | |
|--|---|
| 1 Quartzose gravel | 7 Granite |
| 2 Dolerite | 8 Microgranite |
| 3 Undifferentiated Owen Conglomerate | 9 Porphyritic microgranite |
| 3a Coarse quartzose sandstone | 10 Undifferentiated western epicalcs |
| 3b Siltstone | 10a Andesitic to basaltic volcanics |
| 4 Undifferentiated Waterloo Creek Group | 10b Tuffaceous siltstone and quartzose conglomerate |
| 4a Hematitic volcanoclastic conglomerate | 10c Black shale (pyritic) |
| 4b Tuffaceous quartz sandstone and grit | 10d Fine to medium grained rhyolitic volcanics |
| 4c Black shale (pyritic) | 10e Gabro |
| 4d Fine to medium grained rhyolitic volcanoclastic | 10f Coarse grained rhyolitic volcanoclastic sandstone |
| 5 Undifferentiated Wart Hill & Hudson River volcanics | 11 Undifferentiated Mainwaring Group |
| 5a Fine to medium grained rhyolitic volcanoclastic | 11a Gabro |
| 5b Rhyolitic quartz feldspar porphyry lavas and intrusives | 11b Andesitic to basaltic volcanics |
| 5c Dacitic porphyry | 11c Dolomite |
| 5d Coarse grained rhyolitic volcanoclastic | 11d Black shale (pyritic) |
| 5e Siltstone | 11e Siltstone and sandstone |
| 5f Siliceous conglomerate | 12 Precambrian metasedimentary rocks |
| 5g Greywacke and siltstone | |
| 6 Elliott Point Porphyry | |

Main map.

Processed radiometric image of the Elliott Bay region, emphasising the higher ends of the radiometric bands. Three band image, with red showing potassium, green showing thorium and blue showing uranium, image not normalised (normalisation emphasising potassium at the expense of the other bands). This image emphasises detail in the range expressed over the Wart Hill prospect. Note, the regularity (~800m spacing) of radiometric highs northwest and southeast along the contact between units 4 and 5. This marked response extends along this contact all the way around the Osmund syncline. The Lewis River prospect also shows a very positive response, albeit higher in potassium, probably as a result of greater influence by nearby granite.

Scale bar: 1,000 0 1,000 2,000 Meters

Non-standard map scale (optimised to sheet).
Geographic Datum AGD66, Zone 55.

Image processing and map production by:
Dr Alistair Reed, Ochre Australia Pty. Ltd.
50 Queen Street, Bellevue, Tasmania 7018
ph 03-6244-1317, mobile 0407-115-123, email alreed@bigpond.net.au

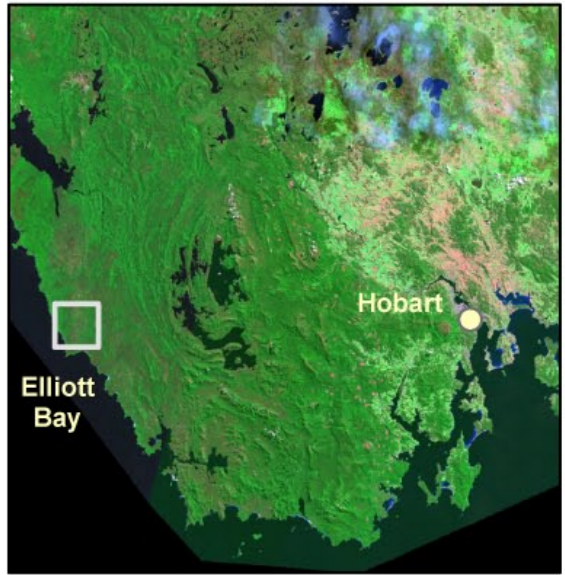
Copyright 2003, Ochre Australia Pty. Ltd.
This image incorporates data which is copyright, Commonwealth of Australia (Geoscience Australia) 1996, 1999, 2002.
This image also includes data derived from Mineral Resources Tasmania, Dept. Infrastructure, Energy and Resources, Dept. Primary Industries, Water and Environment, and scanned images extracted from company reports held by Mineral Resources Tasmania.

Statement of uncertainty.

Attribute data for point data have not been verified. Position error as per stated in Mirloch database (available from Mineral Resources Tasmania). This database indicates position errors for some deposits of greater than 1km. Doris drill hole database is known from comparison with mineral exploration reports not to be complete. Position error for gridded image data is unknown but likely to be less than the original flightline spacing of 200m. Road and river data have been digitised from georeferenced company reports. Comparisons between georeferenced images indicate position errors of up to about 100m (but typically less than 30m). Errors for other scanned and georeferenced products are in the order of less than 50m.

Disclaimer

This and accompanying maps and reports are based on interpretations of geophysical data. While every care has been taken in the preparation of this data, no warranty is given as to the correctness of the information and no liability is accepted for any statement or opinion or for any error or omission. This material is provided upon the condition that the user, by receiving or viewing the material shown, agrees not to act in reliance upon it without first satisfying himself/herself by independent enquiry or advice as to the correctness, accuracy, relevance, currency, reliability or otherwise of the material displayed, including (without limitation) representations of fact, nature, quality and suitability. Whilst every endeavour has been made to ensure the accuracy and reliability of the information shown, the author expressly disclaims any liability or responsibility for any errors or omissions that may occur herein. The user shall have, make or bring no action, suit, claim, demand or proceedings against the author for damages, compensation, losses, costs, expenses, orders or any other legal or equitable remedy should any such material be found to be incorrect, inaccurate, erroneous, defective, deceptive or misleading, whether caused by the negligence of the author or any other cause whatsoever.



Location map.