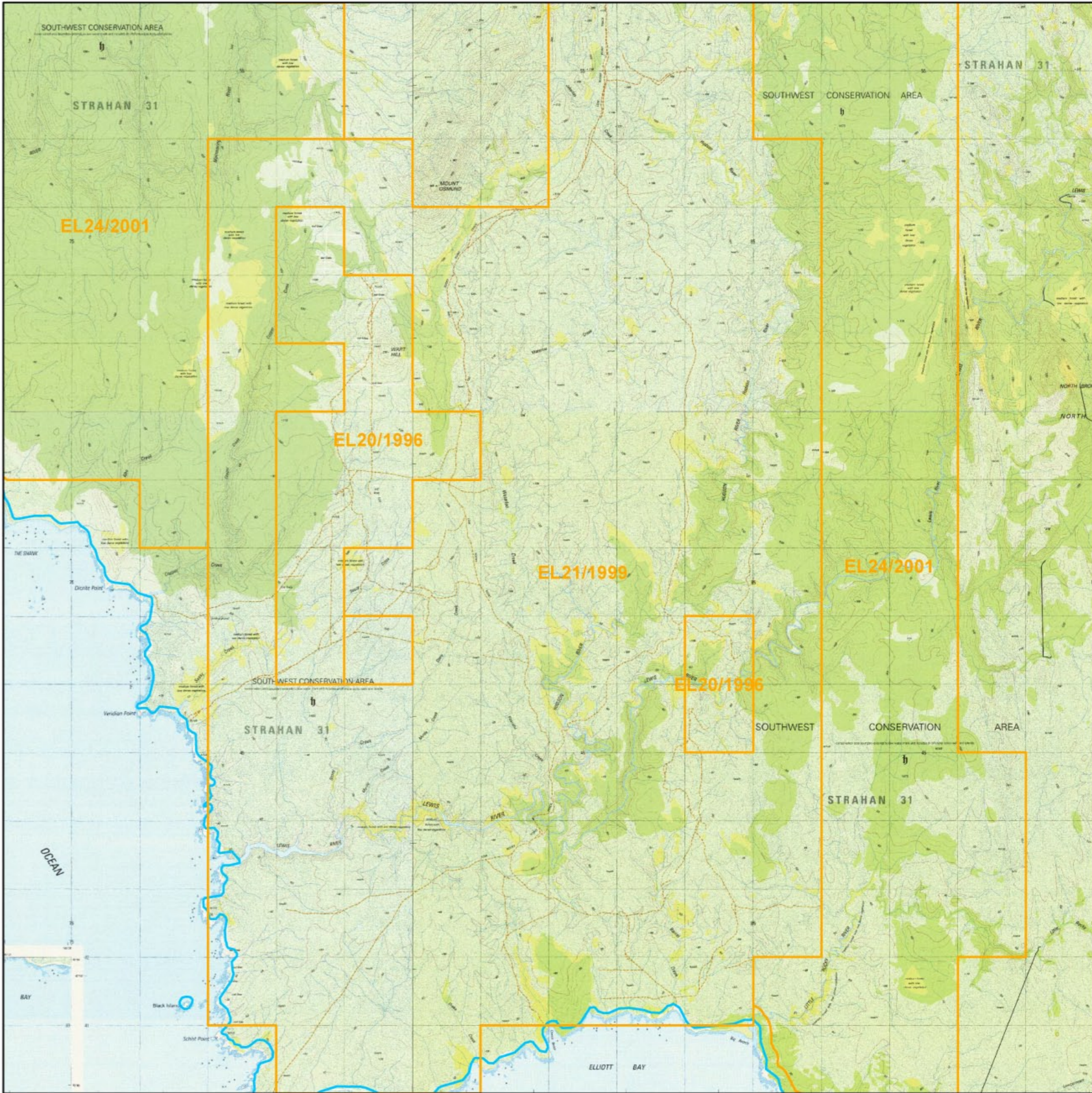


## Elliott Bay, SW Tasmania, Australia.

### Location map



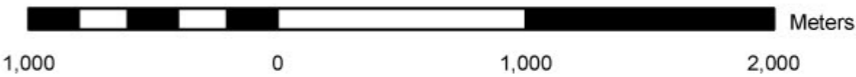
View extents as for main map. Topographic map inset (Dept. Primary Industries Water and Environment)

#### Legend

- Mineral locations
- Drill hole locations
- Exploration lease boundaries

#### Main map.

Image of the Elliott Bay Region encompassing EL20/1996.



Non-standard map scale (optimised to sheet).  
Geographic Datum AGD66, Zone 55.

Image processing and map production by:  
Dr Alistair Reed, Ochre Australia Pty. Ltd.  
50 Queen Street, Bellarine, Tasmania 7018  
ph 03-6244-1317, mobile 0407-115-123, email alreed@bigpond.net.au

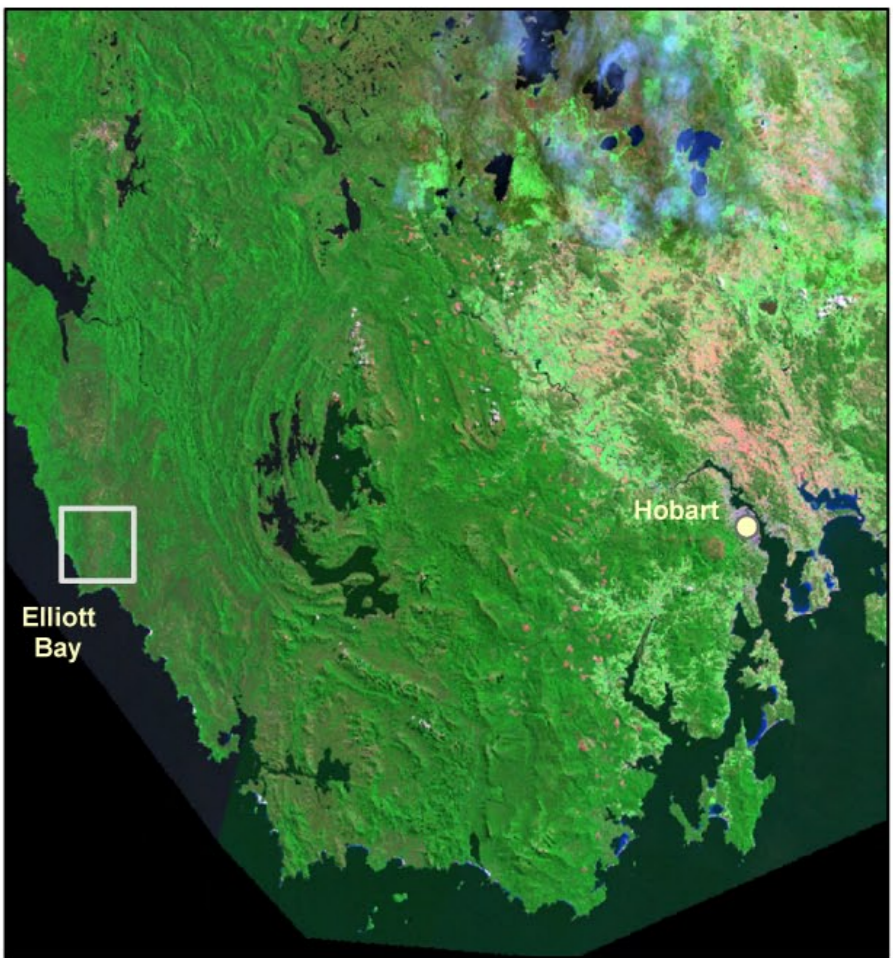
Copyright 2003 Ochre Australia Pty. Ltd.  
This image incorporates data which is copyright, Commonwealth of Australia (Geoscience Australia) 1996, 1999, 2002.  
This image also includes data derived from Mineral Resources Tasmania, Dept. Infrastructure, Energy and Resources,  
Dept. Primary Industries, Water and Environment, and scanned images are extracted from company reports held by Mineral  
Resources Tasmania.

#### Statement of uncertainty.

Attribute data for point data have not been verified. Position error as per stated in Mirloch database (available from Mineral Resources Tasmania).  
This database indicates position errors for some deposits of greater than 1km. Doris drill hole database is known from comparison with mineral  
exploration reports not to be complete. Position error for gridded image data is unknown but likely to be less than the original flightline spacing of 200m.  
Road and river data have been digitised from georeferenced company reports. Comparisons between georeferenced images indicate position errors  
of up to about 100m (but typically less than 30m). Errors for other scanned and georeferenced products are in the order of less than 50m.

#### Disclaimer

This and accompanying maps and reports are based on interpretations of geophysical data. While every care has been taken in the  
preparation of this data, no warranty is given as to the correctness of the information and no liability is accepted for any statement  
or opinion or for any error or omission. This material is provided upon the condition that the user, by receiving or viewing the material  
shown, agrees not to act in reliance upon it without first satisfying himself/herself by independent enquiry or advice as to the  
correctness, accuracy, relevance, currency, reliability or otherwise of the material displayed, including (without limitation) representations  
of fact, nature, quality and suitability. Whilst every endeavour has been made to ensure the accuracy and reliability of the information  
shown, the author expressly disclaims any liability or responsibility for any errors or omissions that may occur herein. The user shall  
have, make or bring no action, suit, claim, demand or proceedings against the author for damages, compensation, losses, costs,  
expenses, orders or any other legal or equitable remedy should any such material be found to be incorrect, inaccurate, erroneous,  
defective, deceptive or misleading, whether caused by the negligence of the author or any other cause whatsoever.



Location map.

