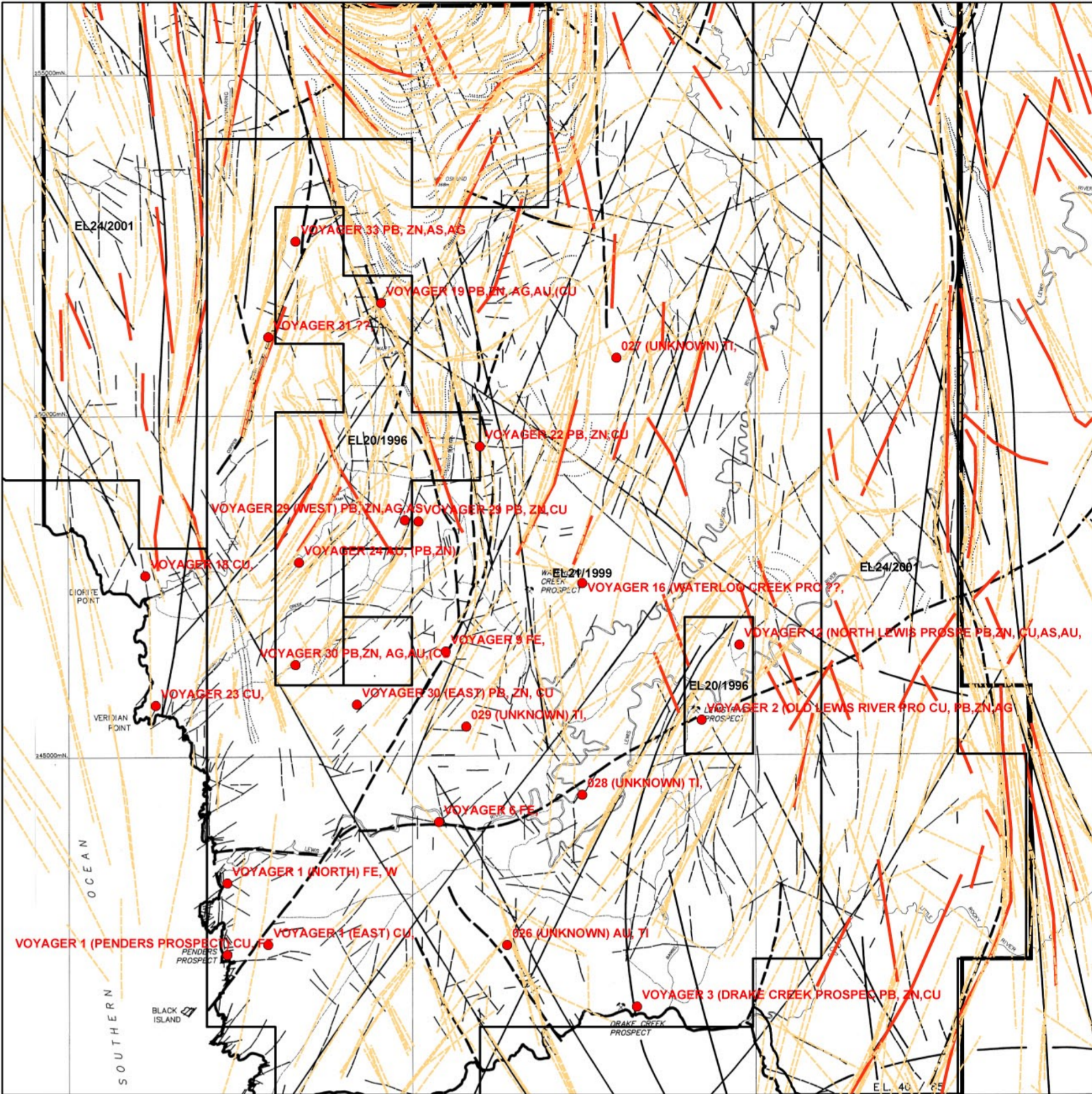


Elliott Bay, SW Tasmania, Australia.

Topographic linears.



View extents as for main map. Map of linears from Torrey et al., Cyprus Gold Australia Co., TCR88-2853 (held by Mineral Resources Tasmania). Red lines shown are those interpreted from main the image. Light orange dashed linears are those interpreted from other datasets processed during the course of this investigation. Mineral deposits shown are from Mineral Resources Tasmania (MIRLOCH database). Map shows clear differences between previously interpreted linears and those interpreted using more recent data.

- Legend**
- Drill hole locations
 - Topographic linears
- | | |
|--|---|
| 1 Quartzose gravel | 7 Granite |
| 2 Dolerite | 8 Microgranite |
| 3 Undifferentiated Owen Conglomerate | 9 Porphyritic microgranite |
| 3a Coarse quartzose sandstone | 10 Undifferentiated western episcastics |
| 3b Siltstone | 10a Andesitic to basaltic volcanics |
| 4 Undifferentiated Waterloo Creek Group | 10b Tuftaceous siltstone and quartzose conglomerate |
| 4a Hematitic volcanoclastic conglomerate | 10c Black shale (pyritic) |
| 4b Tuftaceous quartz sandstone and grit | 10d Fine to medium grained rhyolitic volcanics |
| 4c Black shale (pyritic) | 10e Gabbro |
| 4d Fine to medium grained rhyolitic volcanoclastic | 10f Coarse grained rhyolitic volcanoclastic sandstone |
| 5 Undifferentiated Wart Hill & Hudson River volcanics | 11 Undifferentiated Mainwaring Group |
| 5a Fine to medium grained rhyolitic volcanoclastic | 11a Gabbro |
| 5b Rhyolitic quartz feldspar porphyry lavas and intrusives | 11b Andesitic to basaltic volcanics |
| 5c Basaltic porphyry | 11c Dolomite |
| 5d Coarse grained rhyolitic volcanoclastic | 11d Black shale (pyritic) |
| 5e Siltstone | 11e Siltstone and sandstone |
| 5f Siliceous conglomerate | 12 Precambrian metasedimentary rocks |
| 5g Greywacke and siltstone | |
| 6 Elliot Point Porphyry | |

Main map.
Digital Elevation Model for the Elliott Bay Region. Northeast-trending linears, east of Wart Hill and East Camp prospects are of an orientation matching Tertiary (or younger) sedimentary basins. Northwest-trending linears in the vicinity of the Lewis River prospect approximate the strike of mapped units. The subdued topography in the Wart Hill region shows little structure with the exception of the river valley corresponding to the mapped position of the Copper Creek Fault.

Scale bar: 1,000 0 1,000 2,000 Meters

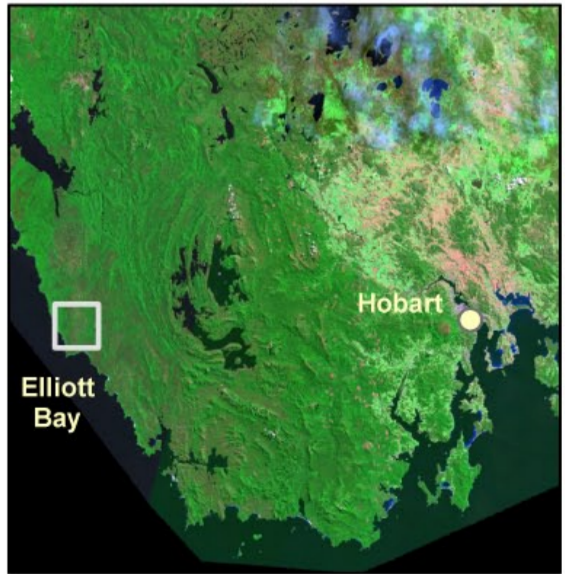
Non-standard map scale (optimised to sheet).
Geographic Datum AGD66, Zone 55.

Image processing and map production by:
Dr Alistair Reed, Ochre Australia Pty. Ltd.
50 Queen Street, Bellarine, Tasmania 7018
ph 03-6244-1317, mobile 0407-115-123, email alreed@bigpond.net.au

Copyright 2003, Ochre Australia Pty. Ltd.
This image incorporates data which is copyright, Commonwealth of Australia (Geoscience Australia) 1996, 1999, 2002.
This image also includes data derived from Mineral Resources Tasmania, Dept. Infrastructure, Energy and Resources, Dept. Primary Industries, Water and Environment, and scanned images extracted from company reports held by Mineral Resources Tasmania.

Statement of uncertainty.
Attribute data for point data have not been verified. Position error as per stated in Mirloch database (available from Mineral Resources Tasmania). This database indicates position errors for some deposits of greater than 1km. Dons drill hole database is known from comparison with mineral exploration reports not to be complete. Position error for gridded image data is unknown but likely to be less than the original flightline spacing of 200m. Road and river data have been digitised from georeferenced company reports. Comparisons between georeferenced images indicate position errors of up to about 100m (but typically less than 30m). Errors for other scanned and georeferenced products are in the order of less than 50m.

Disclaimer
This and accompanying maps and reports are based on interpretations of geophysical data. While every care has been taken in the preparation of this data, no warranty is given as to the correctness of the information and no liability is accepted for any statement or opinion or for any error or omission. This material is provided upon the condition that the user, by receiving or viewing the material shown, agrees not to act in reliance upon it without first satisfying himself/herself by independent enquiry or advice as to the correctness, accuracy, relevance, currency, reliability or otherwise of the material displayed, including (without limitation) representations of fact, nature, quality and suitability. Whilst every endeavour has been made to ensure the accuracy and reliability of the information shown, the author expressly disclaims any liability or responsibility for any errors or omissions that may occur herein. The user shall have, make or bring no action, suit, claim, demand or proceedings against the author for damages, compensation, losses, costs, expenses, orders or any other legal or equitable remedy should any such material be found to be incorrect, inaccurate, erroneous, defective, deceptive or misleading, whether caused by the negligence of the author or any other cause whatsoever.



Location map.

