

Natural Values Atlas Report

Authoritative, comprehensive information on Tasmania's natural values.

Report number: 44416

Reference: DarcyLink+PeakRivuletRoad

Requested For: GSLM

Timestamp: 02:00:27 PM Tuesday 14 February 2012

Raptors: buffers 500m and 5000m

Threatened Flora: buffers 500m and 5000m

Threatened Fauna: buffers 500m and 5000m

Conservation Significance Flora: Not requested

Conservation Significance Fauna: Not requested

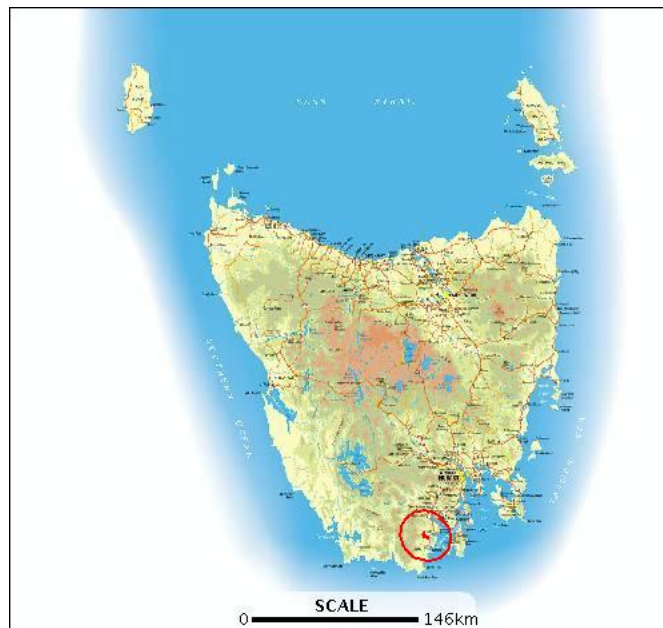
Weeds: Not requested

TasVeg: Not requested

Threatened Communities: Not requested

Geoconservation: Not requested

Tasmanian Reserve Estates: Not requested



The centroid for this query GDA94 493192,5200900 falls within:

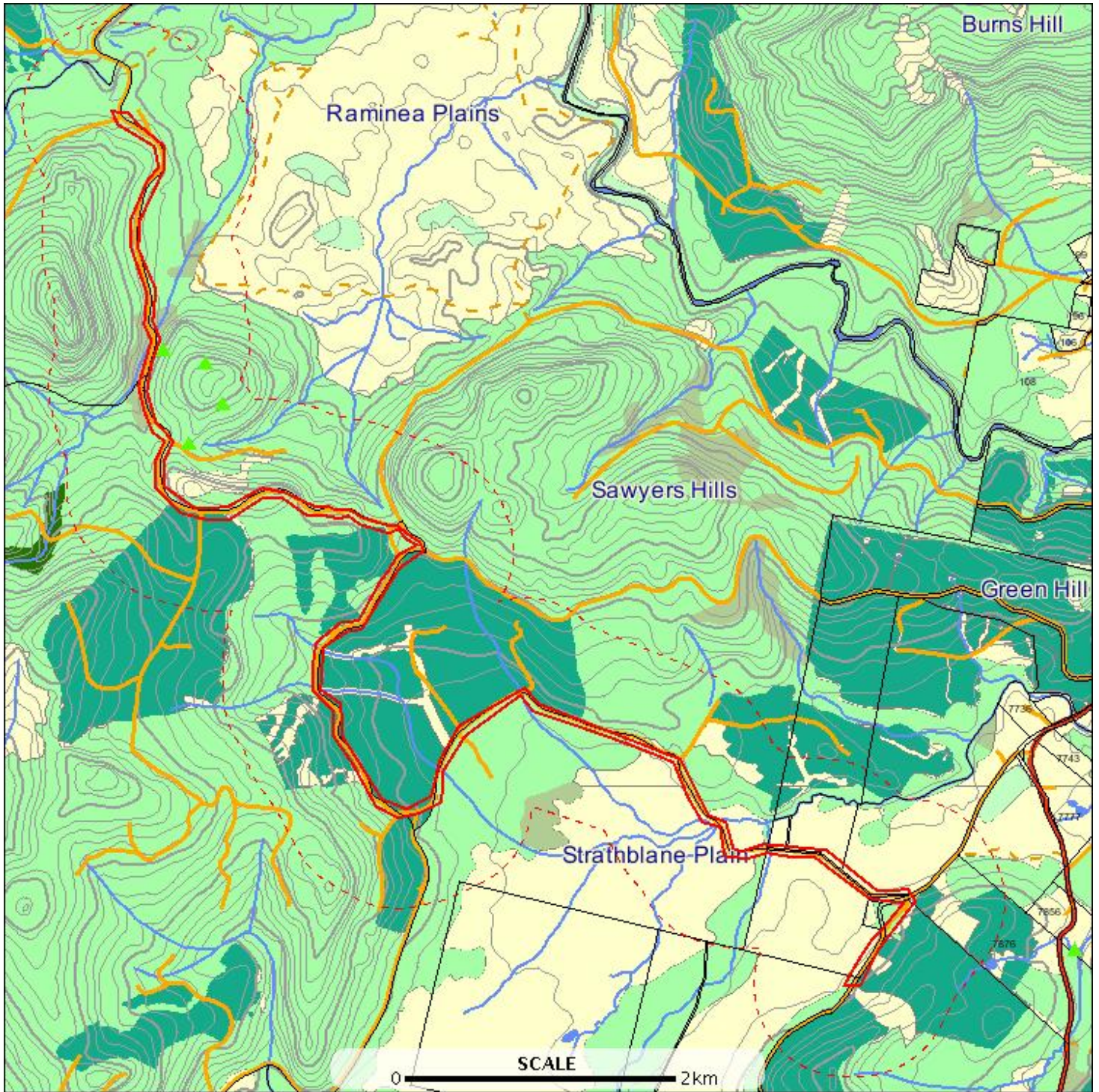
1:25000 Map: 4820 RAMINEA

Property: 2534612 HUON HIGHWAY, DOVER TAS
7117

Threatened flora within 500 metres

E: 490768
N: 5204341

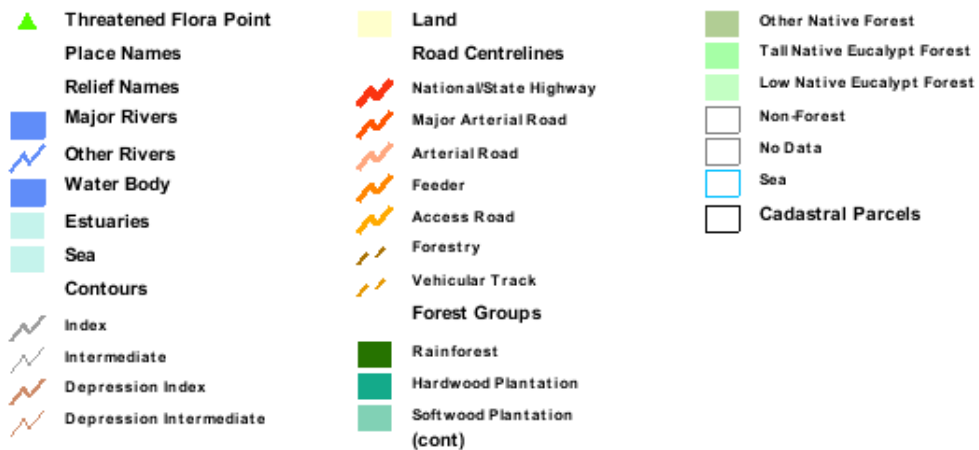
E: 496423
N: 5204341



E: 490768
N: 5198295

E: 496423
N: 5198295

Threatened flora within 500 metres



Threatened flora within 500 metres

Verified Records

Id	Species	Common name	Ss	Ns	Observers	Date	Obs type	Position (gda94)
1240095	Cyathodes platystoma	tall cheeseberry	r		Karen Richards (3464), Chris Spencer (6910)	16-Sep-2011	sight	Point (491795,5201889) +/- 10m.
1240098	Cyathodes platystoma	tall cheeseberry	r		Karen Richards (3464), Chris Spencer (6910)	16-Sep-2011	sight	Point (491654,5202409) +/- 10m.
1240097	Cyathodes platystoma	tall cheeseberry	r		Karen Richards (3464), Chris Spencer (6910)	16-Sep-2011	sight	Point (491888,5202334) +/- 10m.
1240096	Cyathodes platystoma	tall cheeseberry	r		Karen Richards (3464), Chris Spencer (6910)	16-Sep-2011	sight	Point (491982,5202109) +/- 10m.

Unverified Records

For more information about threatened species, please contact the Manager, Threatened Species Section.

Telephone: (03) 6233 8759

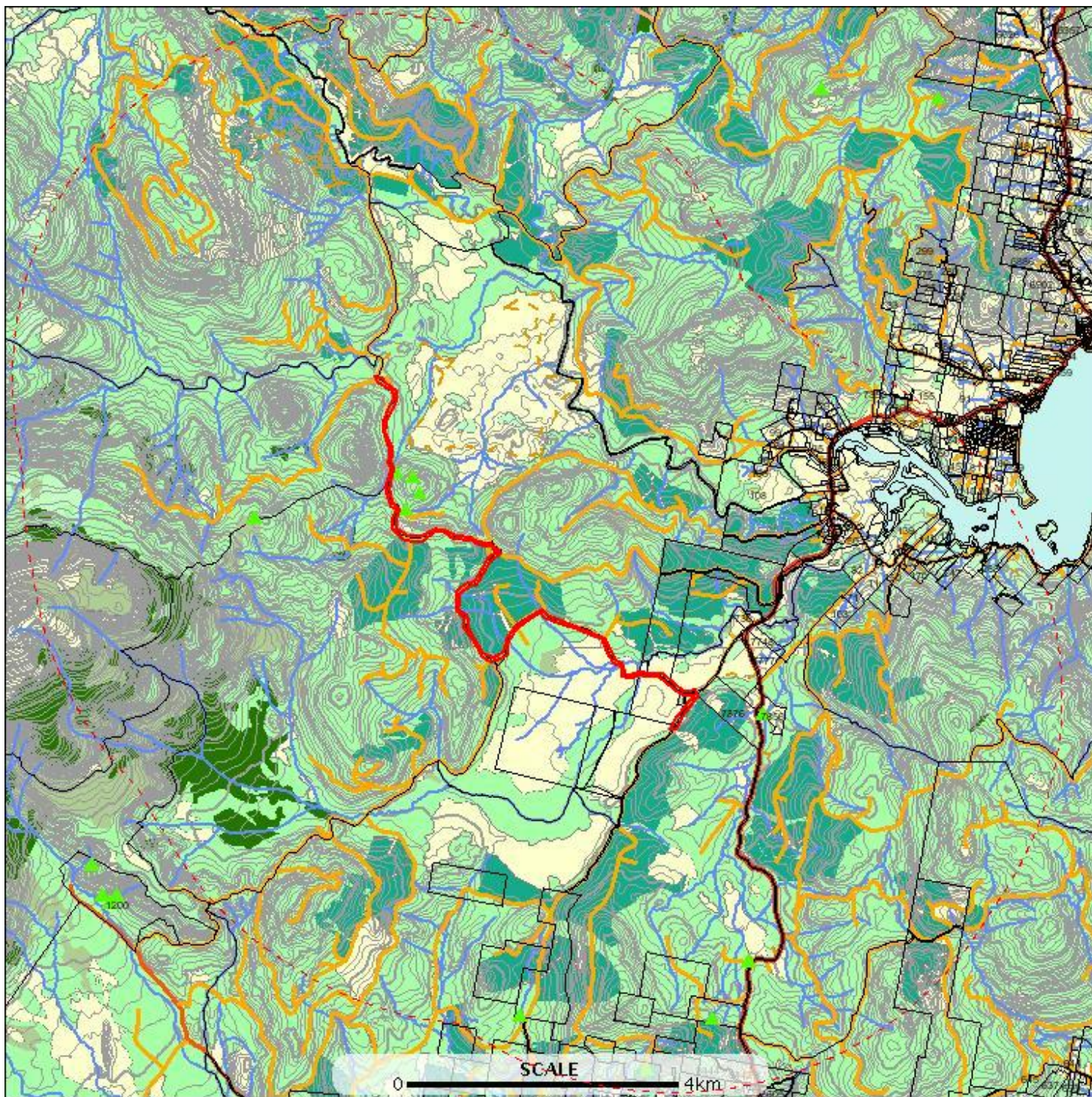
Email: ThreatenedSpecies.Enquiries@dpiwre.tas.gov.au

Address: GPO Box 44, Hobart, Tasmania, Australia, 7000

Threatened flora within 5000 metres

E: 486268
N: 5208841

E: 500922
N: 5208841



E: 486268
N: 5193795

E: 500922
N: 5193795

Threatened flora within 5000 metres



Threatened flora within 5000 metres

Verified Records

Id	Species	Common name	Ss	Ns	Observers	Date	Obs type	Position (gda94)
755783	Carex tasmanica	curly sedge		VU	- Unknown (21598)	01-Apr-1994?	sight	Point (496712,5199083) +/- 50m.
285699	Carex tasmanica	curly sedge		VU	- Unknown (21598)	14-Nov-1994	sight	Point (496012,5194883) +/- 100m.
1240097	Cyathodes platystoma	tall cheeseberry	r		Karen Richards (3464), Chris Spencer (6910)	16-Sep-2011	sight	Point (491888,5202334) +/- 10m.
1240098	Cyathodes platystoma	tall cheeseberry	r		Karen Richards (3464), Chris Spencer (6910)	16-Sep-2011	sight	Point (491654,5202409) +/- 10m.
1240096	Cyathodes platystoma	tall cheeseberry	r		Karen Richards (3464), Chris Spencer (6910)	16-Sep-2011	sight	Point (491982,5202109) +/- 10m.
1240095	Cyathodes platystoma	tall cheeseberry	r		Karen Richards (3464), Chris Spencer (6910)	16-Sep-2011	sight	Point (491795,5201889) +/- 10m.
227774	Deyeuxia densa	heath bentgrass	r		D.I. Morris (4111)	26-Jan-1981	sight	Point (496512,5195683) +/- 300m.
944950	Deyeuxia minor	small bentgrass	r		Denis IMorris (6606)	26-Jan-1981	sight	Point (493364,5194927) +/- 5000m.
227682	Persoonia muelleri subsp. angustifolia	narrowleaf geebung	r		S.J. Jarman (5581)	30-Mar-1980	sight	Point (489712,5201783) +/- 2000m.
227007	Westringia angustifolia	narrowleaf westringia	r		H.N. Barber (4421)	Nov-1948	sight	Point (495112,5194183) +/- 2000m.

Unverified Records

For more information about threatened species, please contact the Manager, Threatened Species Section.

Telephone: (03) 6233 8759

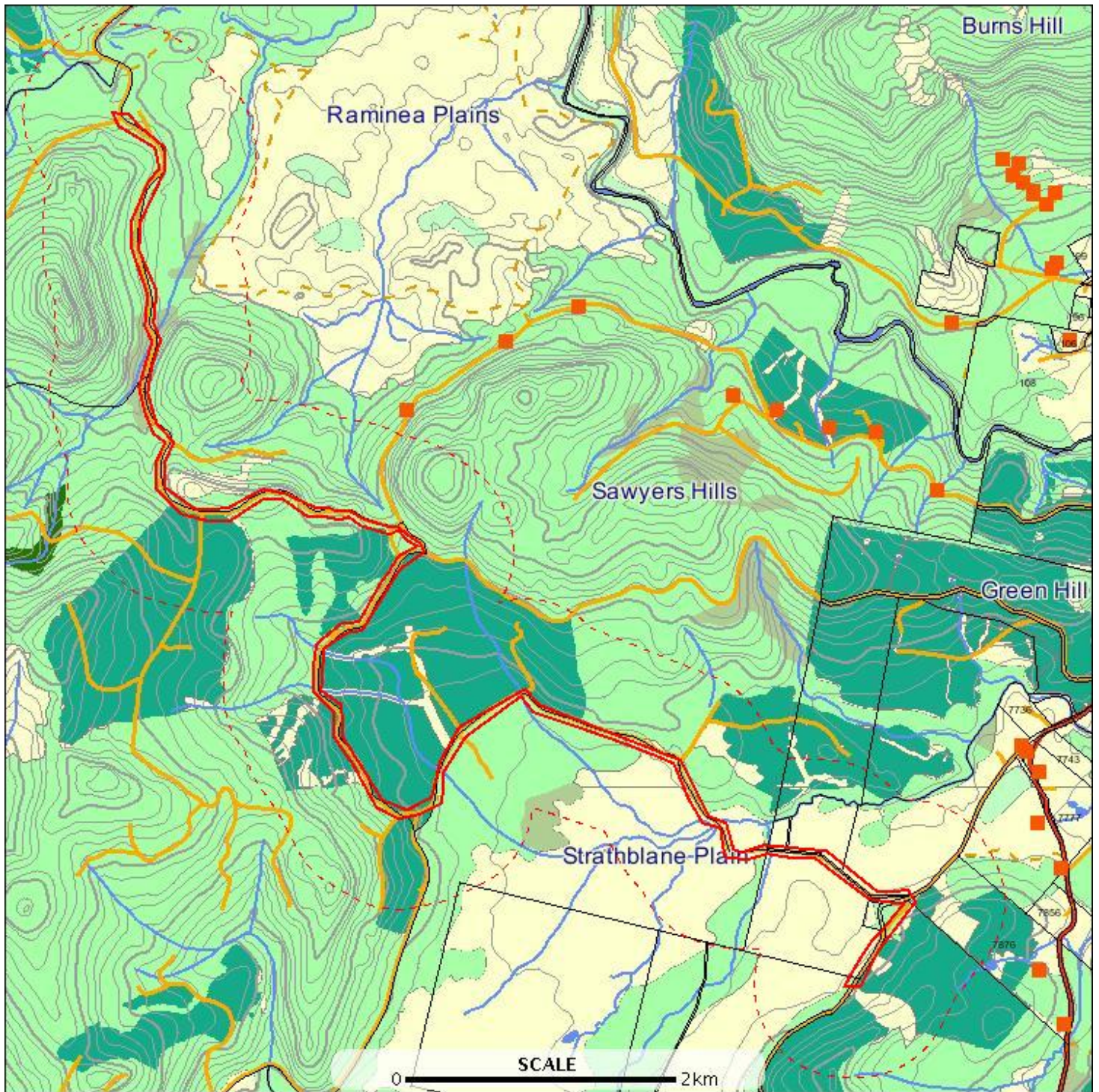
Email: ThreatenedSpecies.Enquiries@dpipwe.tas.gov.au

Address: GPO Box 44, Hobart, Tasmania, Australia, 7000

Threatened fauna within 500 metres

E: 490768
N: 5204341

E: 496423
N: 5204341



E: 490768
N: 5198295

E: 496423
N: 5198295

Threatened fauna within 500 metres



Threatened fauna within 500 metres

Threatened fauna within 500 metres (based on Habitat Mapping)

Species	Common name	Ss	Ns	Potential	Known	Core
Lissotes menalcas	mt. mangana stag beetle	v		1	1	0
Aquila audax	wedge-tailed eagle	pe	PEN	1	0	0
Perameles gunnii	eastern barred bandicoot		VU	1	0	0
Lathamus discolor	swift parrot	e	EN	1	1	1
Litoria raniformis	green and golden frog	v	VU	1	0	0
Tyto novaehollandiae	masked owl	pe	PVU	1	0	1
Pardalotus quadragintus	forty-spotted pardalote	e	EN	1	0	0
Haliaeetus leucogaster	white-bellied sea-eagle	v		1	0	0
Accipiter novaehollandiae	grey goshawk	e		1	0	1

For more information about threatened species, please contact the Manager, Threatened Species Section.

Telephone: (03) 6233 8759

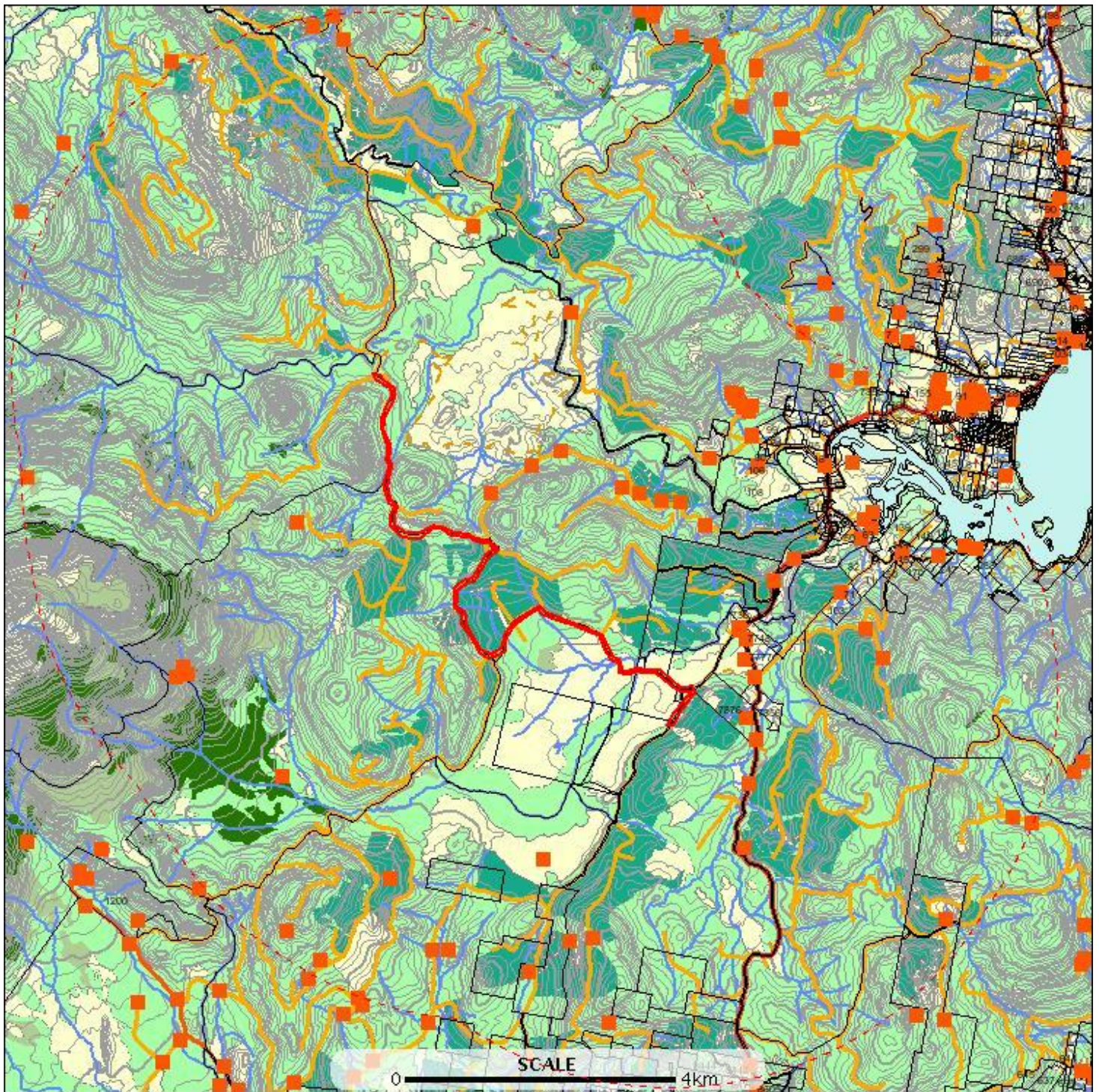
Email: ThreatenedSpecies.Enquiries@dpipwe.tas.gov.au

Address: GPO Box 44, Hobart, Tasmania, Australia, 7000

Threatened fauna within 5000 metres

E: 486268
N: 5208841

E: 500922
N: 5208841



E: 486268
N: 5193795

E: 500922
N: 5193795

Threatened fauna within 5000 metres



Threatened fauna within 5000 metres

Verified Records

Id	Species	Common name	Ss	Ns	Observers	Date	Obs type	Position (gda94)
854568	Accipiter novaehollandiae	grey goshawk	e		L Reynolds (1519)	01-Dec-1992?	sight	Point (496512,5200083) +/- 100m.
863123	Accipiter novaehollandiae	grey goshawk	e		P Kostaglou (1955)	01-Feb-1992?	sight	Point (496512,5198983) +/- 100m.
863128	Accipiter novaehollandiae	grey goshawk	e		D Allan (6776)	01-Jan-1992?	sight	Point (493512,5195483) +/- 100m.
863156	Accipiter novaehollandiae	grey goshawk	e		P Kostaglou (1955)	01-Apr-1992?	sight	Point (496512,5200083) +/- 100m.
744944	Dasyurus maculatus subsp. maculatus	spotted-tailed quoll	r	VU	- Unknown (21598)	19-Nov-1991?	sight	Point (492412,5195783) +/- 2500m.
884902	Dasyurus maculatus subsp. maculatus	spotted-tailed quoll	r	VU	Nick Mooney (16443)	01-Mar-1996?	sight	Point (496912,5200883) +/- 100m.
1200429	Hickmanoxymma cavaticum	cave harvestman	r		R Swain (2190), Alistair Richardson (2595), Stefan Eberhard (3474)	31-May-1980	sight	Point (488750,5199700) +/- 500m.
1200421	Hickmanoxymma cavaticum	cave harvestman	r		Arthur Clarke (1669)	02-Nov-1986	sight	Point (488650,5199550) +/- 500m.
1200413	Hickmanoxymma cavaticum	cave harvestman	r		Arthur Clarke (1669)	24-Aug-1991	sight	Point (488750,5199700) +/- 500m.
1200442	Idacarabus cordicollis	cave beetle (hastings cave)	r		Arthur Clarke (1669)	31-May-1980	sight	Point (488750,5199700) +/- 500m.
1200443	Idacarabus cordicollis	cave beetle (hastings cave)	r		Arthur Clarke (1669)	10-Aug-1968	sight	Point (488800,5199600) +/- 500m.
1023664	Lathamus discolor	swift parrot	e	EN	Matthew Webb (7125)	01-Nov-2007	sight	Point (493005,5202089) +/- 200m.
1023769	Lathamus discolor	swift parrot	e	EN	Matthew Webb (7125)	20-Nov-2007	sight	Point (498109,5201477) +/- 200m.
1023716	Lathamus discolor	swift parrot	e	EN	Matthew Webb (7125)	02-Nov-2007	sight	Point (498679,5201268) +/- 200m.
1023627	Lathamus discolor	swift parrot	e	EN	Matthew Webb (7125)	02-Dec-2007	sight	Point (499181,5201229) +/- 200m.
1023633	Lathamus discolor	swift parrot	e	EN	Matthew Webb (7125)	01-Nov-2007	sight	Point (499181,5201229) +/- 200m.
1023770	Lathamus discolor	swift parrot	e	EN	Matthew Webb (7125)	20-Nov-2007	sight	Point (499181,5201229) +/- 200m.
1023623	Lathamus discolor	swift parrot	e	EN	Matthew Webb (7125)	01-Nov-2007	sight	Point (497763,5203791) +/- 200m.
1023700	Lathamus discolor	swift parrot	e	EN	Matthew Webb (7125)	02-Dec-2007	sight	Point (497763,5203791) +/- 200m.
1023772	Lathamus discolor	swift parrot	e	EN	Matthew Webb (7125)	20-Nov-2007	sight	Point (499536,5201377) +/- 200m.
1023771	Lathamus discolor	swift parrot	e	EN	Matthew Webb (7125)	20-Nov-2007	sight	Point (499699,5201334) +/- 200m.
1023608	Lathamus discolor	swift parrot	e	EN	Matthew Webb (7125)	01-Nov-2007	nest	Point (493554,5202468) +/- 200m.
1023618	Lathamus discolor	swift parrot	e	EN	Matthew Webb (7125)	08-Dec-2007	nest	Point (493957,5202669) +/- 200m.
1023691	Lathamus discolor	swift parrot	e	EN	Matthew Webb (7125)	01-Dec-2007	sight	Point (498412,5199808) +/- 200m.
1023674	Lathamus discolor	swift parrot	e	EN	Matthew Webb (7125)	02-Nov-2007	sight	Point (498412,5199808) +/- 200m.
1023679	Lathamus discolor	swift parrot	e	EN	Matthew Webb (7125)	02-Nov-2007	sight	Point (499280,5196214) +/- 200m.
1023701	Lathamus discolor	swift parrot	e	EN	Matthew Webb (7125)	01-Nov-2007	sight	Point (495952,5201644) +/- 200m.
1023719	Lathamus discolor	swift parrot	e	EN	Matthew Webb (7125)	02-Nov-2007	sight	Point (497833,5200722) +/- 200m.
1201013	Lathamus discolor	swift parrot	e	EN	Peter G Brown (6022)	11-Jun-2005	sight	Point (496500,5197200) +/- 100m.
1023735	Lathamus discolor	swift parrot	e	EN	Matthew Webb (7125)	12-Oct-2007	sight	Point (496558,5203231) +/- 200m.
1023678	Lathamus discolor	swift parrot	e	EN	Matthew Webb (7125)	02-Nov-2007	sight	Point (498172,5200228) +/- 200m.
1023632	Lathamus discolor	swift parrot	e	EN	Matthew Webb (7125)	01-Nov-2007	sight	Point (496558,5203231) +/- 200m.
1023714	Lathamus discolor	swift parrot	e	EN	Matthew Webb (7125)	02-Dec-2007	sight	Point (496558,5203231) +/- 200m.

Threatened fauna within 5000 metres

Id	Species	Common name	Ss	Ns	Observers	Date	Obs type	Position (gda94)
1076181	Lissotes menalcas	mt. mangana stag beetle	v		Colin McCoull (5822)	15-Dec-2006	sight	Point (490642,5195656) +/- 100m.
1076180	Lissotes menalcas	mt. mangana stag beetle	v		Colin McCoull (5822)	15-Dec-2006	sight	Point (490181,5196041) +/- 100m.
1076085	Lissotes menalcas	mt. mangana stag beetle	v		Chris Spencer (6910)	10-Aug-2006	sight	Point (494398,5195944) +/- 100m.
1076084	Lissotes menalcas	mt. mangana stag beetle	v		Chris Spencer (6910)	10-Aug-2006	sight	Point (494079,5195918) +/- 100m.
1084161	Lissotes menalcas	mt. mangana stag beetle	v		C McCoull (2049)	Jul-2006	sight	Point (500471,5197537) +/- 100m.
1084160	Lissotes menalcas	mt. mangana stag beetle	v		C McCoull (2049)	Jul-2006	sight	Point (500199,5197630) +/- 100m.
1076088	Lissotes menalcas	mt. mangana stag beetle	v		Chris Spencer (6910)	16-Aug-2006	sight	Point (494812,5202170) +/- 100m.
1076122	Lissotes menalcas	mt. mangana stag beetle	v		Colin McCoull (5822)	04-Sep-2006	sight	Point (495055,5202090) +/- 100m.
1076123	Lissotes menalcas	mt. mangana stag beetle	v		Colin McCoull (5822)	04-Sep-2006	sight	Point (495353,5201991) +/- 100m.
1076124	Lissotes menalcas	mt. mangana stag beetle	v		Colin McCoull (5822)	04-Sep-2006	sight	Point (495605,5201973) +/- 100m.
1076186	Lissotes menalcas	mt. mangana stag beetle	v		Colin McCoull (5822)	15-Dec-2006	sight	Point (496315,5203484) +/- 100m.
1076185	Lissotes menalcas	mt. mangana stag beetle	v		Colin McCoull (5822)	15-Dec-2006	sight	Point (496367,5203395) +/- 100m.
1076184	Lissotes menalcas	mt. mangana stag beetle	v		Colin McCoull (5822)	15-Dec-2006	sight	Point (496423,5203355) +/- 100m.
1076182	Lissotes menalcas	mt. mangana stag beetle	v		Colin McCoull (5822)	15-Dec-2006	sight	Point (496481,5203304) +/- 100m.
1084156	Lissotes menalcas	mt. mangana stag beetle	v		C McCoull (2049)	Jul-2006	sight	Point (496600,5203300) +/- 100m.
1076183	Lissotes menalcas	mt. mangana stag beetle	v		Colin McCoull (5822)	15-Dec-2006	sight	Point (496479,5203289) +/- 100m.
1076081	Lissotes menalcas	mt. mangana stag beetle	v		Colin McCoull (5822)	02-Aug-2006	sight	Point (496609,5202906) +/- 100m.
1076080	Lissotes menalcas	mt. mangana stag beetle	v		Colin McCoull (5822)	02-Aug-2006	sight	Point (496591,5202873) +/- 100m.
1084143	Lissotes menalcas	mt. mangana stag beetle	v		C McCoull (2049)	Jul-2006	sight	Point (490822,5208678) +/- 100m.
1084145	Lissotes menalcas	mt. mangana stag beetle	v		C McCoull (2049)	Jul-2006	sight	Point (490963,5208359) +/- 100m.
1084144	Lissotes menalcas	mt. mangana stag beetle	v		C McCoull (2049)	Jul-2006	sight	Point (490545,5208540) +/- 100m.
1238889	Perameles gunnii	eastern barred bandicoot		VU	Dean Heinze (22683)	05-Jan-2008	sight	Point (498247,5201611) +/- 10m.
1238891	Perameles gunnii	eastern barred bandicoot		VU	Dean Heinze (22683)	06-Jan-2008	sight	Point (498152,5201730) +/- 10m.
1238887	Perameles gunnii	eastern barred bandicoot		VU	Dean Heinze (22683)	05-Jan-2008	sight	Point (498156,5201731) +/- 10m.
1238888	Perameles gunnii	eastern barred bandicoot		VU	Dean Heinze (22683)	05-Jan-2008	sight	Point (498279,5201829) +/- 10m.
1238927	Perameles gunnii	eastern barred bandicoot		VU	Dean Heinze (22683)	28-Jan-2008	sight	Point (497984,5202525) +/- 10m.
744948	Perameles gunnii	eastern barred bandicoot		VU	- Unknown (21598)	19-Nov-1991?	sight	Point (494112,5204583) +/- 2500m.
749835	Perameles gunnii	eastern barred bandicoot		VU	- Unknown (21598)	25-Nov-1987?	sight	Point (492762,5205783) +/- 5000m.
1239038	Perameles gunnii	eastern barred bandicoot		VU	Dean Heinze (22683)	05-Jan-2008	sight	Point (496637,5199549) +/- 10m.
758461	Perameles gunnii	eastern barred bandicoot		VU	- Unknown (21598)	22-Jan-1986?	sight	Point (493712,5197033) +/- 5000m.
895854	Perameles gunnii	eastern barred bandicoot		VU	R Hooper (2020)	06-Sep-1969?	sight	Point (486600,5202320) +/- 18500m.
1200503	Pseudotyranochthonius typhlus	cave pseudoscorpion (mole creek)	r		Arthur Clarke (1669)	25-Apr-1974	sight	Point (488800,5199600) +/- 500m.
1066499	Sarcophilus harrisii	tasmanian devil	e	EN	Steve Billingham (3287)	03-Feb-2009	sight	Point (496585,5194202) +/- 3000m.
1204742	Sarcophilus harrisii	tasmanian devil	e	EN	George Ramm (22005)	26-Jan-2011	sight	Point (496026,5202577) +/- 200m.
746115	Sarcophilus harrisii	tasmanian devil	e	EN	- Unknown (21598)	26-Nov-1992?	sight	Point (491612,5196783) +/- 2500m.

Threatened fauna within 5000 metres

Id	Species	Common name	Ss	Ns	Observers	Date	Obs type	Position (gda94)
1224387	<i>Sarcophilus harrisii</i>	tasmanian devil	e	EN	Susan Smith (22289)	13-Mar-2011	sight	Point (497176,5201189) +/- 700m.
1224417	<i>Sarcophilus harrisii</i>	tasmanian devil	e	EN	Kevin Novar (22296)	20-Apr-2011	sight	Point (496688,5202483) +/- 30m.
1066498	<i>Sarcophilus harrisii</i>	tasmanian devil	e	EN	Steve Billingham (3287)	03-Feb-2009	sight	Point (496585,5194202) +/- 3000m.
1249630	<i>Sarcophilus harrisii</i>	tasmanian devil	e	EN	Helen Addis (23117)	24-Dec-2011	sight	Point (496842,5195709) +/- 500m.
1075822	<i>Sarcophilus harrisii</i>	tasmanian devil	e	EN	David Cameron (9848)	03-Nov-2005	sight	Point (496567,5198078) +/- 0m.
1154425	<i>Sarcophilus harrisii</i>	tasmanian devil	e	EN	Phil Wise (20059)	09-Apr-2010	sight	Point (496653,5198682) +/- 300m.
1249585	<i>Sarcophilus harrisii</i>	tasmanian devil	e	EN	Len Cook (23121)	06-Jan-2012	sight	Point (496464,5198723) +/- 8000m.
1246391	<i>Sarcophilus harrisii</i>	tasmanian devil	e	EN	- Anonymous (16453)	04-Dec-2011	sight	Point (496508,5199799) +/- 5000m.
1216152	<i>Sarcophilus harrisii</i>	tasmanian devil	e	EN	Kim Ladner (22059)	10-Mar-2011	sight	Point (496444,5200200) +/- 300m.
1075912	<i>Sarcophilus harrisii</i>	tasmanian devil	e	EN	David Cameron (9848)	25-Nov-2003	sight	Point (496421,5200232) +/- 0m.
757064	<i>Sarcophilus harrisii</i>	tasmanian devil	e	EN	- Unknown (21598)	28-Nov-1989?	sight	Point (492412,5195783) +/- 2500m.
884538	<i>Sarcophilus harrisii</i>	tasmanian devil	e	EN	Menna Jones (8901)	24-May-1996?	sight	Point (490112,5198183) +/- 100m.
1030080	<i>Sarcophilus harrisii</i>	tasmanian devil	e	EN	- Unknown (21598)	22-Mar-2005	sight	Point (492184,5195795) +/- 7m.
1042830	<i>Sarcophilus harrisii</i>	tasmanian devil	e	EN	- Unknown (21598)	11-Feb-2005	sight	Point (492184,5195795) +/- 7m.
1033436	<i>Sarcophilus harrisii</i>	tasmanian devil	e	EN	Clare Hawkins (8562)	09-Feb-2005	sight	Point (492184,5195795) +/- 7m.
1201204	<i>Tyto novaehollandiae</i>	masked owl	pe	PVU	Threatened Species Section Staff Unknown (21723)	01-Jan-1950	sight	Point (498112,5203683) +/- 100m.
352494	<i>Tyto novaehollandiae</i> subsp. <i>castanops</i>	masked owl (tasmanian)	e	VU	J Tulip (1373)	21-Sep-1996?	sight	Point (497612,5202483) +/- 500m.

Unverified Records

Threatened fauna within 5000 metres (based on Habitat Mapping)

Species	Common name	Ss	Ns	Potential	Known	Core
<i>Lissotes menalcas</i>	mt. mangana stag beetle	v		1	1	0
<i>Aquila audax</i>	wedge-tailed eagle	pe	PEN	1	0	0
<i>Perameles gunnii</i>	eastern barred bandicoot		VU	1	0	0
<i>Lathamus discolor</i>	swift parrot	e	EN	11	11	11
<i>Litoria raniformis</i>	green and golden frog	v	VU	1	0	0
<i>Tyto novaehollandiae</i>	masked owl	pe	PVU	1	0	1
<i>Pardalotus quadragintus</i>	forty-spotted pardalote	e	EN	1	0	0
<i>Haliaeetus leucogaster</i>	white-bellied sea-eagle	v		1	0	0
<i>Accipiter novaehollandiae</i>	grey goshawk	e		1	0	1

For more information about threatened species, please contact the Manager, Threatened Species Section.

Telephone: (03) 6233 8759

Email: ThreatenedSpecies.Enquiries@dpipwe.tas.gov.au

Address: GPO Box 44, Hobart, Tasmania, Australia, 7000

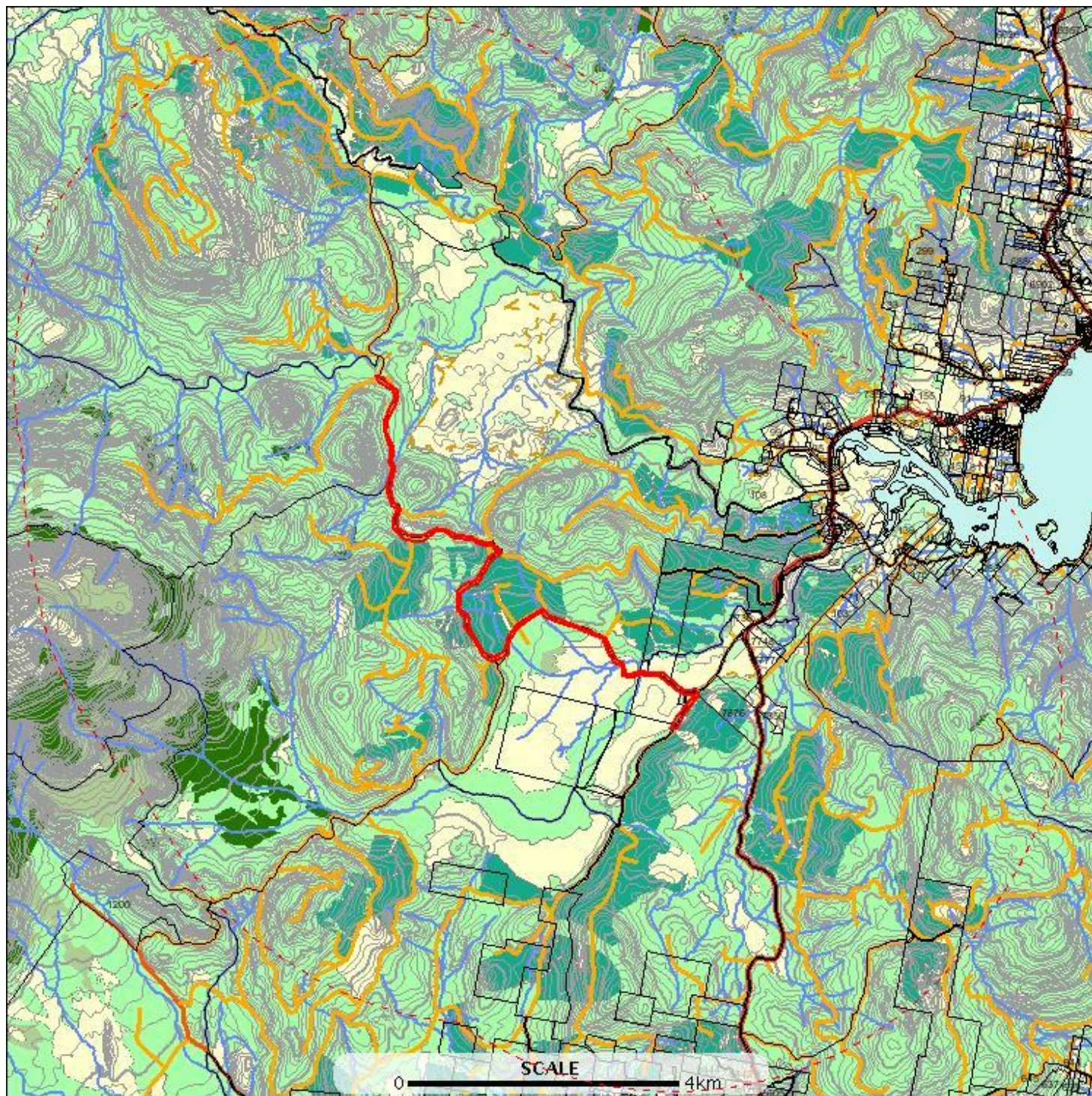
Raptor nests and sightings within 500 metres

*** No Raptor nests or sightings found within 500 metres. ***

Raptor nests and sightings within 5000 metres

E: 486268
N: 5208841

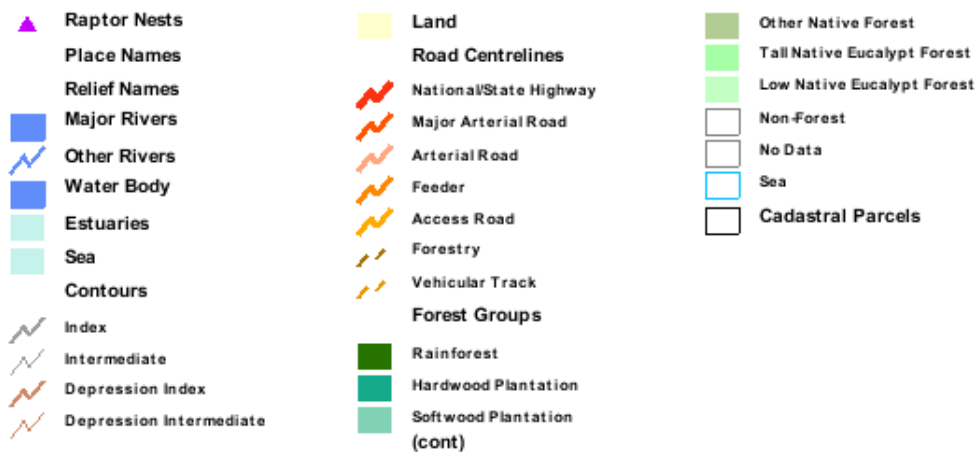
E: 500922
N: 5208841



E: 486268
N: 5193795

E: 500922
N: 5193795

Raptor nests and sightings within 5000 metres



Raptor nests and sightings within 5000 metres

Verified Records

Location id	Location foreign id	Observation id	Observer	Obs date	Obs type	Position (gda94)	Season	Nest productivity	Nest occupancy
		949327	T Ware (2427)	06-May-2005	nest	Point (494634,5194775) +/- 0m.			
		980501	Trevor Seears (12530)	10-Oct-2007	nest	Point (496402,5203456) +/- 0m.			
		1023560	Watson Timber (18446)	02-Sep-2008	nest	Point (490318,5201681) +/- 0m.			

Unverified Records