

Natural Values Atlas Report

Authoritative, comprehensive information on Tasmania's natural values.

Report number: 44418

Reference: EsperenceRiverRoad1

Requested For: GSLM

Timestamp: 03:21:14 PM Tuesday 14 February 2012

Raptors: buffers 500m and 5000m

Threatened Flora: buffers 500m and 5000m

Threatened Fauna: buffers 500m and 5000m

Conservation Significance Flora: Not requested

Conservation Significance Fauna: Not requested

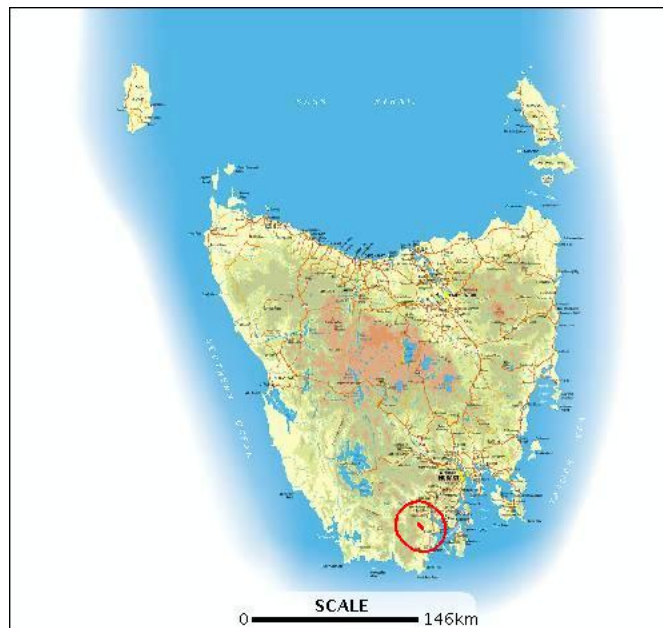
Weeds: Not requested

TasVeg: Not requested

Threatened Communities: Not requested

Geoconservation: Not requested

Tasmanian Reserve Estates: Not requested



The centroid for this query GDA94 488870,5209209 falls within:

1:25000 Map: 4820 RAMINEA

Property: 2532780 EDWARDS ROAD, GEEVESTON
TAS 7116

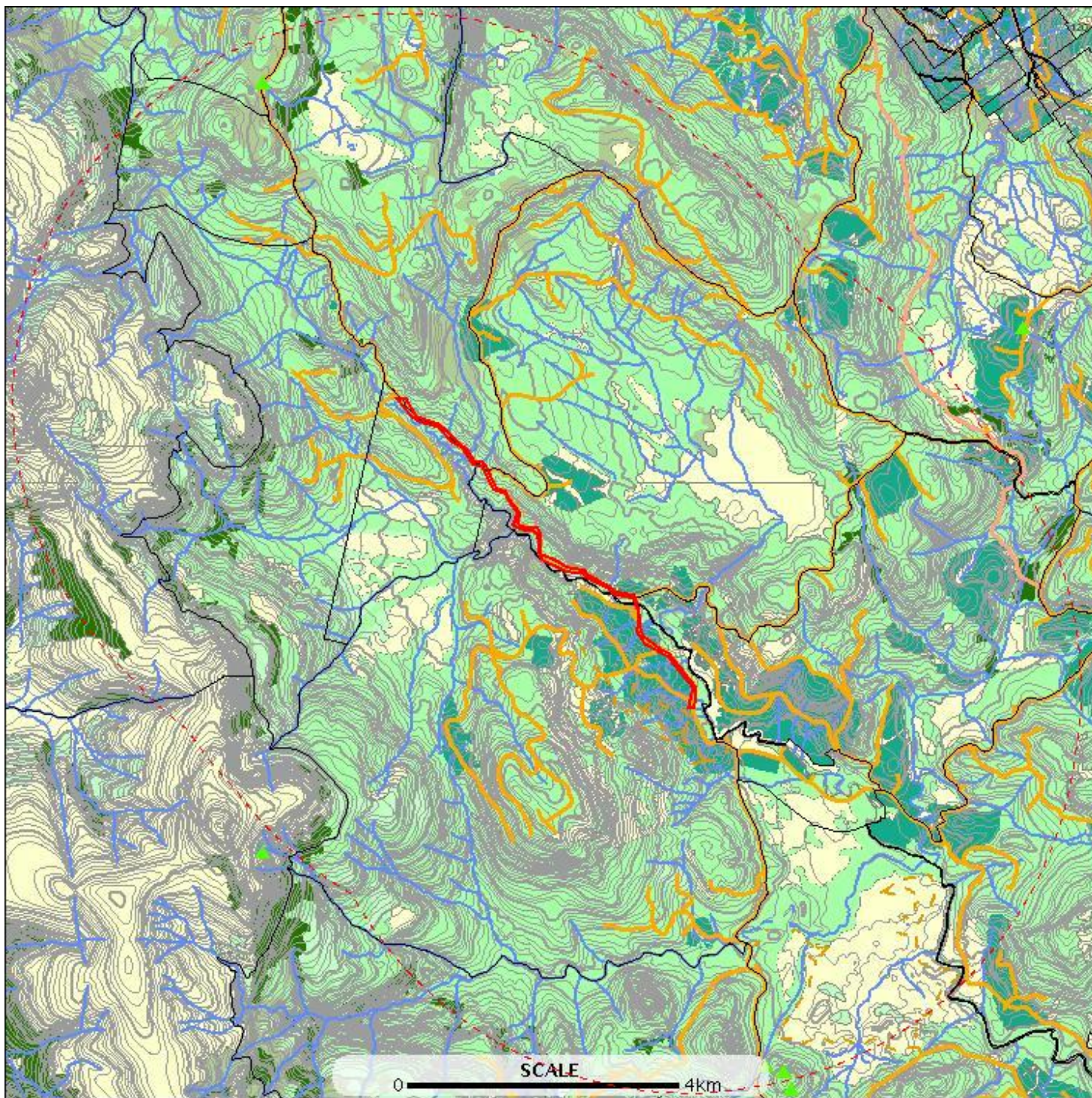
Threatened flora within 500 metres

*** No threatened flora found within 500 metres. ***

Threatened flora within 5000 metres

E: 481757
N: 5216203

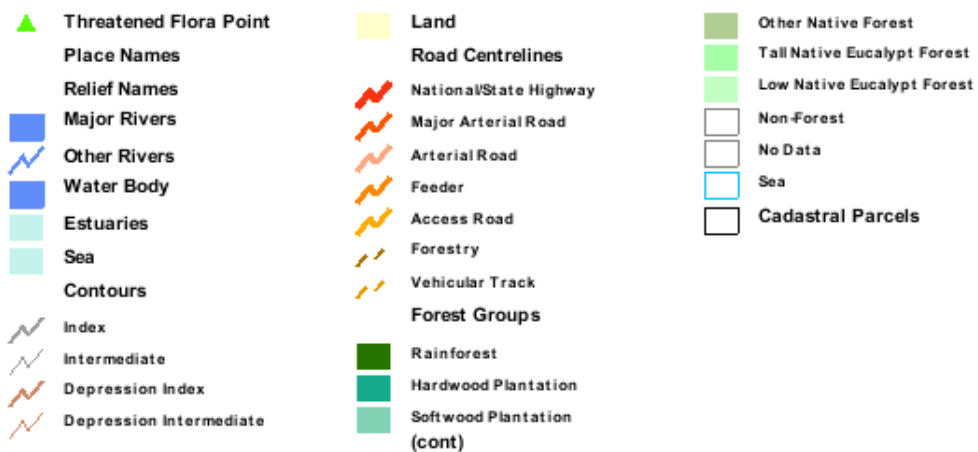
E: 495847
N: 5216203



E: 481757
N: 5201985

E: 495847
N: 5201985

Threatened flora within 5000 metres



Threatened flora within 5000 metres

Verified Records

Id	Species	Common name	Ss	Ns	Observers	Date	Obs type	Position (gda94)
1240097	Cyathodes platystoma	tall cheeseberry	r		Karen Richards (3464), Chris Spencer (6910)	16-Sep-2011	sight	Point (491888,5202334) +/- 10m.
1240098	Cyathodes platystoma	tall cheeseberry	r		Karen Richards (3464), Chris Spencer (6910)	16-Sep-2011	sight	Point (491654,5202409) +/- 10m.
366528	Geum talbotianum	tasmanian snowrose	r		Jamie Kirkpatrick (1315)	1983	sight	Point (485112,5215183) +/- 5000m.

Unverified Records

For more information about threatened species, please contact the Manager, Threatened Species Section.

Telephone: (03) 6233 8759

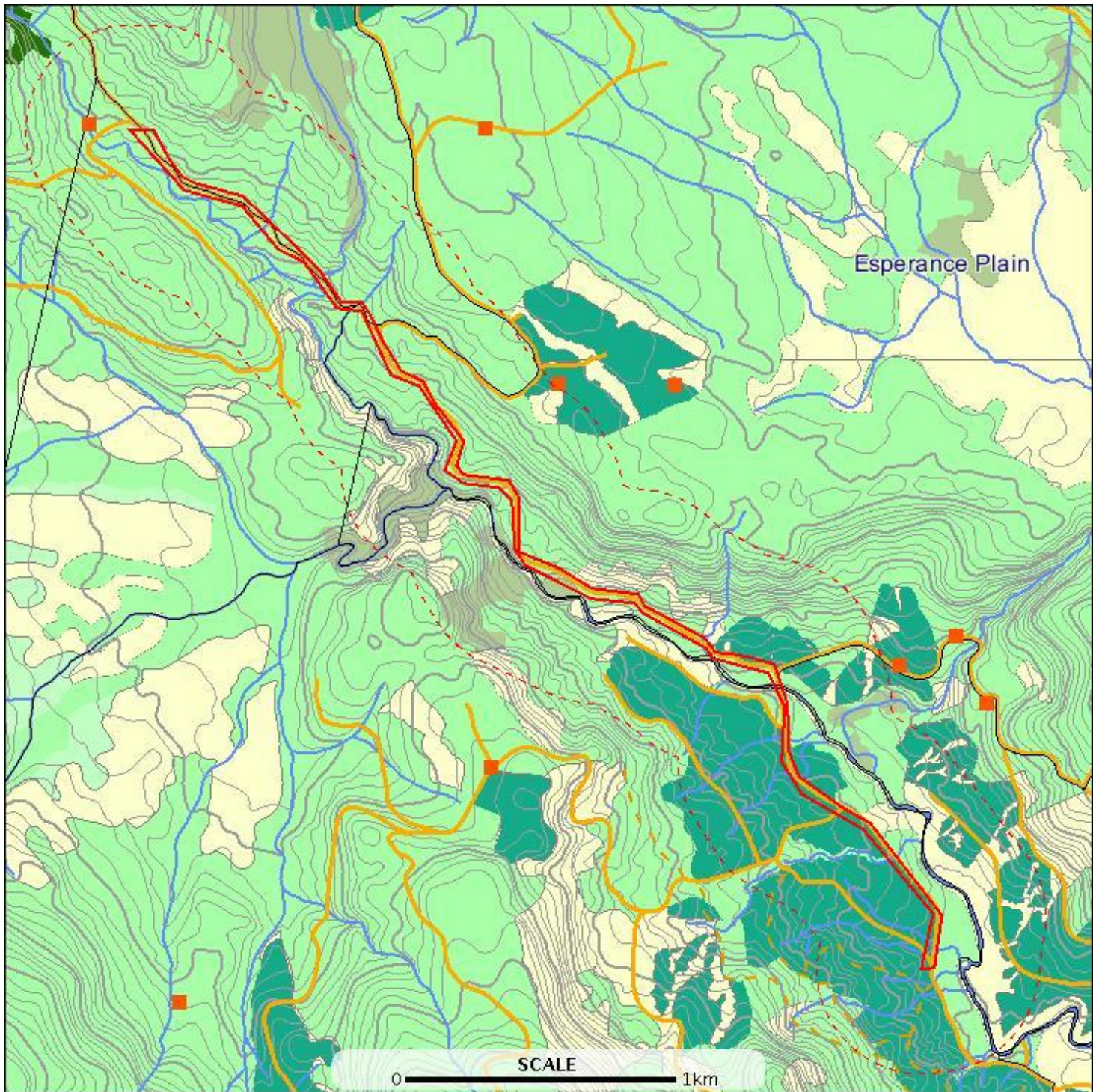
Email: ThreatenedSpecies.Enquiries@dpiwve.tas.gov.au

Address: GPO Box 44, Hobart, Tasmania, Australia, 7000

Threatened fauna within 500 metres

E: 486257
N: 5211703

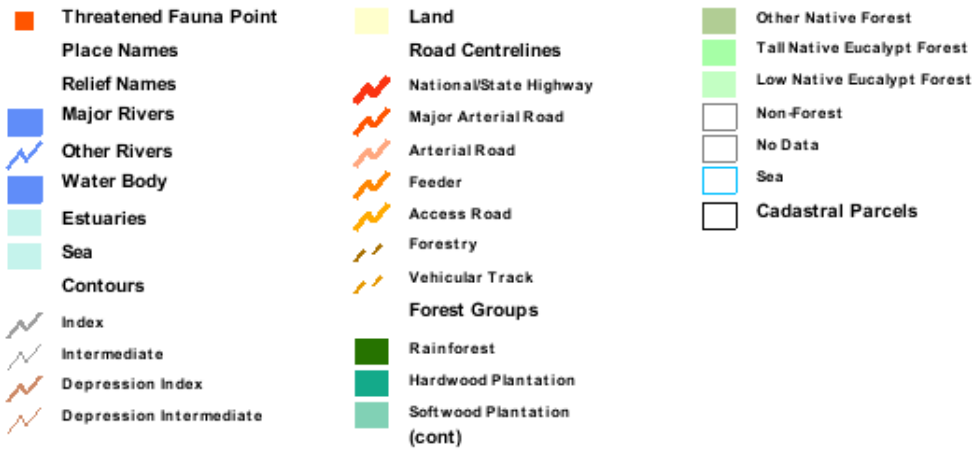
E: 491347
N: 5211703



E: 486257
N: 5206484

E: 491347
N: 5206484

Threatened fauna within 500 metres



Threatened fauna within 500 metres

Verified Records

Id	Species	Common name	Ss	Ns	Observers	Date	Obs type	Position (gda94)
1216943	Oxyethira mienica	caddis fly (ouse river)	r		Laurie Cook (6862)	10-Jan-2000	sight	Point (486662,5211133) +/- 100m.

Unverified Records

Threatened fauna within 500 metres (based on Habitat Mapping)

Species	Common name	Ss	Ns	Potential	Known	Core
Lissotes menalcas	mt. mangana stag beetle	v		2	2	0
Aquila audax	wedge-tailed eagle	pe	PEN	2	0	0
Perameles gunnii	eastern barred bandicoot		VU	2	0	0
Lathamus discolor	swift parrot	e	EN	2	2	2
Tyto novaehollandiae	masked owl	pe	PVU	2	0	1
Haliaeetus leucogaster	white-bellied sea-eagle	v		2	0	0
Accipiter novaehollandiae	grey goshawk	e		2	0	2

For more information about threatened species, please contact the Manager, Threatened Species Section.

Telephone: (03) 6233 8759

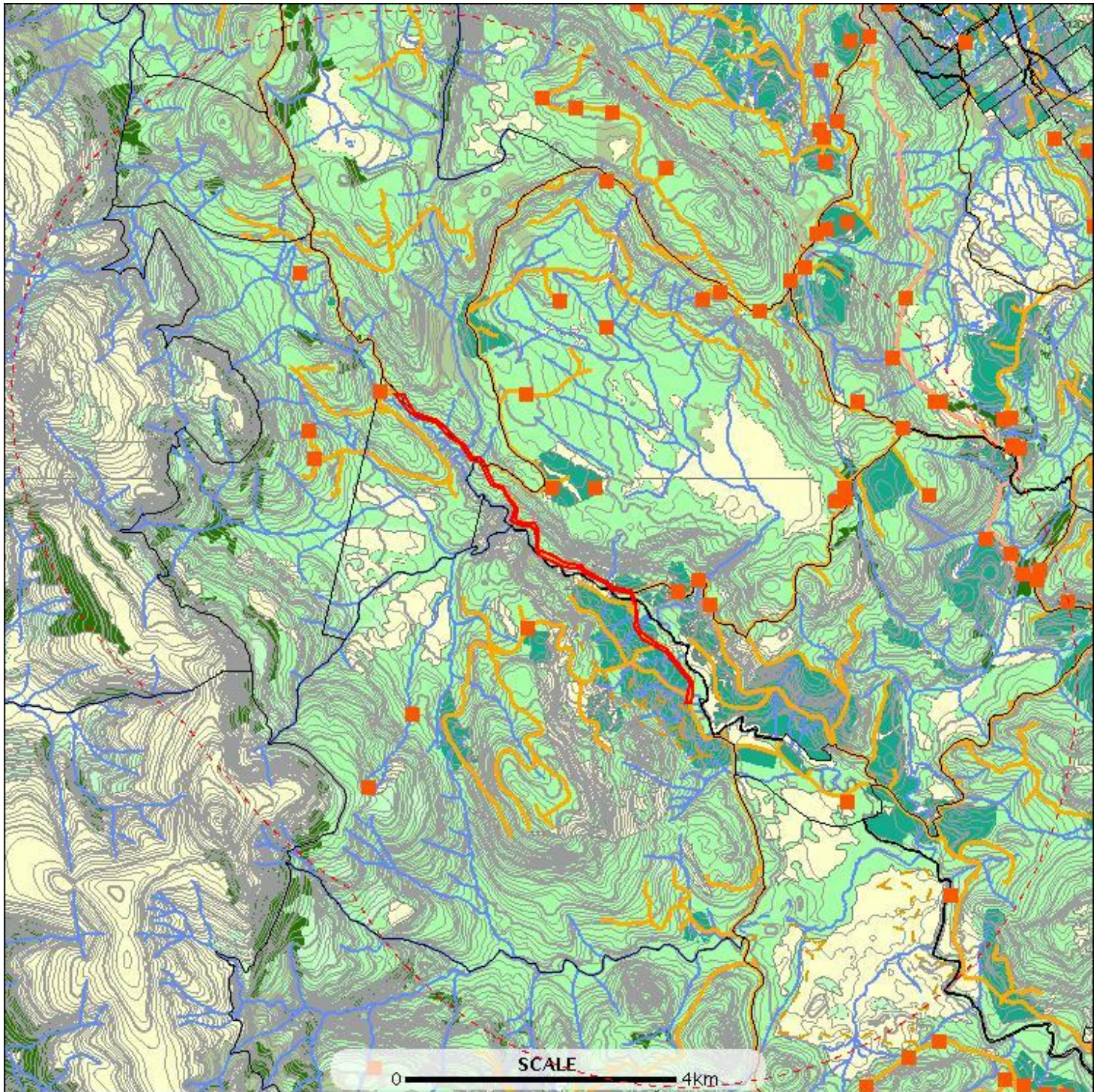
Email: ThreatenedSpecies.Enquiries@dpipwe.tas.gov.au

Address: GPO Box 44, Hobart, Tasmania, Australia, 7000

Threatened fauna within 5000 metres

E: 481757
N: 5216203

E: 495847
N: 5216203



E: 481757
N: 5201985

E: 495847
N: 5201985

Threatened fauna within 5000 metres



Threatened fauna within 5000 metres

Verified Records

Id	Species	Common name	Ss	Ns	Observers	Date	Obs type	Position (gda94)
704749	Accipiter novaehollandiae	grey goshawk	e		- Unknown (21598)	31-Aug-1979?	sight	Point (493347,5211585) +/- 18500m.
701190	Accipiter novaehollandiae	grey goshawk	e		- Unknown (21598)	31-May-1979?	sight	Point (493347,5211585) +/- 18500m.
733542	Accipiter novaehollandiae	grey goshawk	e		- Unknown (21598)	30-Nov-1979?	sight	Point (493347,5211585) +/- 18500m.
900861	Dasyurus maculatus subsp. maculatus	spotted-tailed quoll	r	VU	Greg Hocking (7572)	10-Nov-1986?	sight	Point (491612,5212183) +/- 10000m.
674011	Haliaeetus leucogaster	white-bellied sea-eagle	v		- Unknown (21598)	31-Aug-1978?	sight	Point (493347,5211585) +/- 18500m.
741901	Haliaeetus leucogaster	white-bellied sea-eagle	v		- Unknown (21598)	30-Nov-1980?	sight	Point (493347,5211585) +/- 18500m.
684937	Lathamus discolor	swift parrot	e	EN	- Unknown (21598)	30-Nov-1978?	sight	Point (493347,5211585) +/- 18500m.
741704	Lathamus discolor	swift parrot	e	EN	- Unknown (21598)	31-Aug-1980?	sight	Point (493347,5211585) +/- 18500m.
733844	Lathamus discolor	swift parrot	e	EN	- Unknown (21598)	31-Oct-1980?	sight	Point (493347,5211585) +/- 18500m.
726124	Lathamus discolor	swift parrot	e	EN	- Unknown (21598)	29-Feb-1980?	sight	Point (493347,5211585) +/- 18500m.
1023775	Lathamus discolor	swift parrot	e	EN	Matthew Webb (7125)	01-Jan-2008	nest	Point (492206,5212762) +/- 200m.
1023683	Lathamus discolor	swift parrot	e	EN	Matthew Webb (7125)	13-Dec-2007	sight	Point (492022,5212583) +/- 200m.
1023662	Lathamus discolor	swift parrot	e	EN	Matthew Webb (7125)	02-Nov-2007	sight	Point (494563,5209209) +/- 200m.
1023768	Lathamus discolor	swift parrot	e	EN	Matthew Webb (7125)	20-Nov-2007	sight	Point (494893,5209031) +/- 200m.
1023660	Lathamus discolor	swift parrot	e	EN	Matthew Webb (7125)	03-Nov-2007	sight	Point (495274,5208812) +/- 200m.
1023661	Lathamus discolor	swift parrot	e	EN	Matthew Webb (7125)	03-Nov-2007	sight	Point (495635,5208395) +/- 200m.
1023619	Lathamus discolor	swift parrot	e	EN	Matthew Webb (7125)	15-Dec-2007	nest	Point (495040,5208768) +/- 200m.
1023605	Lathamus discolor	swift parrot	e	EN	Matthew Webb (7125)	03-Nov-2007	nest	Point (492745,5209751) +/- 200m.
1023643	Lathamus discolor	swift parrot	e	EN	Matthew Webb (7125)	02-Dec-2007	sight	Point (492745,5209751) +/- 200m.
1023644	Lathamus discolor	swift parrot	e	EN	Matthew Webb (7125)	13-Dec-2007	sight	Point (490402,5214060) +/- 200m.
1023657	Lathamus discolor	swift parrot	e	EN	Matthew Webb (7125)	03-Nov-2007	sight	Point (490402,5214060) +/- 200m.
1023611	Lathamus discolor	swift parrot	e	EN	Matthew Webb (7125)	03-Nov-2007	nest	Point (488784,5214962) +/- 200m.
1023712	Lathamus discolor	swift parrot	e	EN	Matthew Webb (7125)	13-Dec-2007	sight	Point (488784,5214962) +/- 200m.
1023777	Lathamus discolor	swift parrot	e	EN	Matthew Webb (7125)	27-Dec-2007	nest	Point (489221,5214838) +/- 200m.
1023776	Lathamus discolor	swift parrot	e	EN	Matthew Webb (7125)	02-Jan-2008	sight	Point (489689,5214777) +/- 200m.
1066159	Lathamus discolor	swift parrot	e	EN	Matthew Webb (7125)	01-Feb-2008	nest	Point (489689,5214777) +/- 150m.
1023722	Lathamus discolor	swift parrot	e	EN	Matthew Webb (7125)	03-Nov-2007	sight	Point (493980,5211016) +/- 200m.
1023739	Lathamus discolor	swift parrot	e	EN	Matthew Webb (7125)	12-Oct-2007	sight	Point (493908,5211016) +/- 200m.
1023711	Lathamus discolor	swift parrot	e	EN	Matthew Webb (7125)	02-Dec-2007	sight	Point (493477,5210656) +/- 200m.
1023606	Lathamus discolor	swift parrot	e	EN	Matthew Webb (7125)	02-Nov-2007	nest	Point (493829,5209792) +/- 200m.
1023713	Lathamus discolor	swift parrot	e	EN	Matthew Webb (7125)	02-Dec-2007	sight	Point (493829,5209792) +/- 200m.
1216957	Lathamus discolor	swift parrot	e	EN	Peter G Brown (6022)	1989	sight	Point (492900,5211000) +/- 100m.
713236	Lathamus discolor	swift parrot	e	EN	- Unknown (21598)	31-Aug-1979?	sight	Point (493347,5211585) +/- 18500m.
689336	Lathamus discolor	swift parrot	e	EN	- Unknown (21598)	28-Feb-1979?	sight	Point (493347,5211585) +/- 18500m.

Threatened fauna within 5000 metres

Id	Species	Common name	Ss	Ns	Observers	Date	Obs type	Position (gda94)
664888	Lathamus discolor	swift parrot	e	EN	- Unknown (21598)	31-Aug-1978?	sight	Point (493347,5211585) +/- 18500m.
890952	Lissotes menalcas	mt. mangana stag beetle	v		B Moore (3902)	27-Apr-1995?	sight	Point (486512,5205983) +/- 2000m.
1084164	Lissotes menalcas	mt. mangana stag beetle	v		C McCoull (2049)	Jul-2006	sight	Point (487093,5206927) +/- 100m.
1076121	Lissotes menalcas	mt. mangana stag beetle	v		Colin McCoull (5822)	04-Sep-2006	sight	Point (488564,5211111) +/- 100m.
1084167	Lissotes menalcas	mt. mangana stag beetle	v		C McCoull (2049)	Jul-2006	sight	Point (485806,5210268) +/- 100m.
1084166	Lissotes menalcas	mt. mangana stag beetle	v		C McCoull (2049)	Jul-2006	sight	Point (485732,5210625) +/- 100m.
1084165	Lissotes menalcas	mt. mangana stag beetle	v		C McCoull (2049)	Jul-2006	sight	Point (488594,5208051) +/- 100m.
1076141	Lissotes menalcas	mt. mangana stag beetle	v		Chris Spencer (6910)	23-Aug-2006	sight	Point (489469,5209878) +/- 100m.
1084145	Lissotes menalcas	mt. mangana stag beetle	v		C McCoull (2049)	Jul-2006	sight	Point (490963,5208359) +/- 100m.
1084144	Lissotes menalcas	mt. mangana stag beetle	v		C McCoull (2049)	Jul-2006	sight	Point (490545,5208540) +/- 100m.
1084143	Lissotes menalcas	mt. mangana stag beetle	v		C McCoull (2049)	Jul-2006	sight	Point (490822,5208678) +/- 100m.
226547	Lissotes menalcas	mt. mangana stag beetle	v		- Unknown (21598)	03-Jul-1998?	sight	Point (485612,5212683) +/- 1000m.
1076087	Lissotes menalcas	mt. mangana stag beetle	v		Chris Spencer (6910)	11-Aug-2006	sight	Point (491104,5212428) +/- 100m.
1076117	Lissotes menalcas	mt. mangana stag beetle	v		Colin McCoull (5822)	29-Aug-2002	sight	Point (489003,5212327) +/- 100m.
1076086	Lissotes menalcas	mt. mangana stag beetle	v		Chris Spencer (6910)	11-Aug-2006	sight	Point (490871,5212334) +/- 100m.
1076067	Lissotes menalcas	mt. mangana stag beetle	v		Jeff Meggs (1338)	01-Jan-1996	sight	Point (485612,5212683) +/- 100m.
351339	Lissotes menalcas	mt. mangana stag beetle	v		Jeff Meggs (1338)	01-Jan-1985?	sight	Point (485612,5212683) +/- 1000m.
1216943	Oxyethira mienica	caddis fly (ouse river)	r		Laurie Cook (6862)	10-Jan-2000	sight	Point (486662,5211133) +/- 100m.
744948	Perameles gunnii	eastern barred bandicoot		VU	- Unknown (21598)	19-Nov-1991?	sight	Point (494112,5204583) +/- 2500m.
749835	Perameles gunnii	eastern barred bandicoot		VU	- Unknown (21598)	25-Nov-1987?	sight	Point (492762,5205783) +/- 5000m.
753651	Sarcophilus harrisii	tasmanian devil	e	EN	- Unknown (21598)	26-Nov-1992?	sight	Point (488912,5209883) +/- 2500m.
358253	Sarcophilus harrisii	tasmanian devil	e	EN	Menna Jones (8901)	05-Jun-1996?	sight	Point (489612,5213883) +/- 200m.
746123	Sarcophilus harrisii	tasmanian devil	e	EN	- Unknown (21598)	26-Nov-1992?	sight	Point (489612,5211983) +/- 2500m.
949303	Tyto novaehollandiae	masked owl	pe	PVU	Erik Martin (9817)	25-Sep-2004	nest	Point (492608,5209707) +/- 0m.
1075629	Tyto novaehollandiae	masked owl	pe	PVU	Michael Kenneth Todd (10621)	08-Nov-2007	sight	Point (495240,5208687) +/- 10m.
1200924	Tyto novaehollandiae	masked owl	pe	PVU	Erik Martin (9817)	25-Jan-2005	sight	Point (492720,5209890) +/- 100m.
692529	Tyto novaehollandiae subsp. castanops	masked owl (tasmanian)	e	VU	- Unknown (21598)	31-May-1979?	sight	Point (493347,5211585) +/- 18500m.

Unverified Records

Threatened fauna within 5000 metres (based on Habitat Mapping)

Species	Common name	Ss	Ns	Potential	Known	Core
Lissotes menalcas	mt. mangana stag beetle	v		2	2	0
Aquila audax	wedge-tailed eagle	pe	PEN	2	0	0
Perameles gunnii	eastern barred bandicoot		VU	2	0	0
Lathamus discolor	swift parrot	e	EN	2	2	2
Tyto novaehollandiae	masked owl	pe	PVU	2	0	2
Haliaeetus leucogaster	white-bellied sea-eagle	v		2	0	0

Threatened fauna within 5000 metres

Species	Common name	Ss	Ns	Potential	Known	Core
Accipiter novaehollandiae	grey goshawk	e		2	0	2

For more information about threatened species, please contact the Manager, Threatened Species Section.

Telephone: (03) 6233 8759

Email: ThreatenedSpecies.Enquiries@dpipwe.tas.gov.au

Address: GPO Box 44, Hobart, Tasmania, Australia, 7000

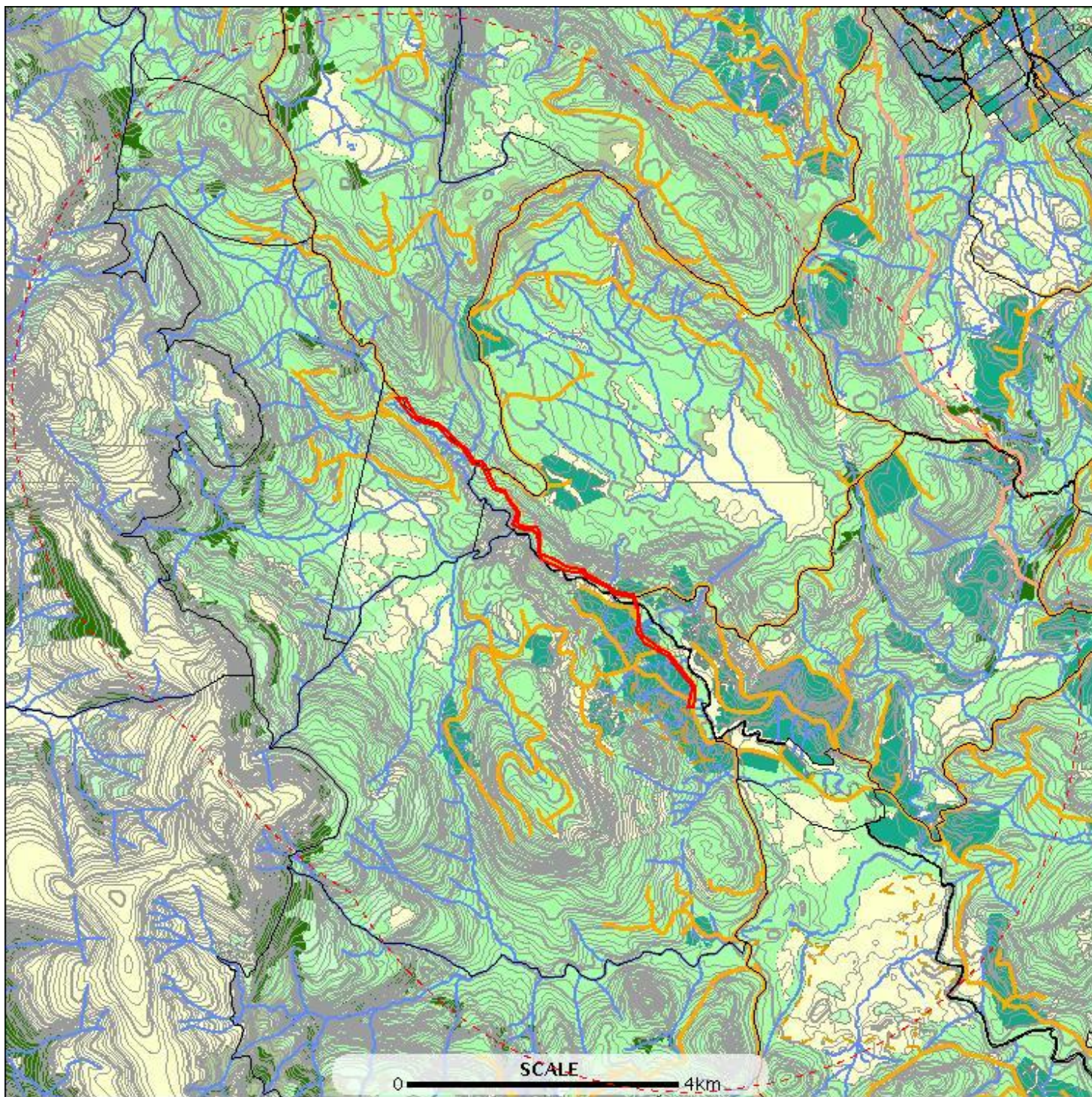
Raptor nests and sightings within 500 metres

*** No Raptor nests or sightings found within 500 metres. ***

Raptor nests and sightings within 5000 metres

E: 481757
N: 5216203

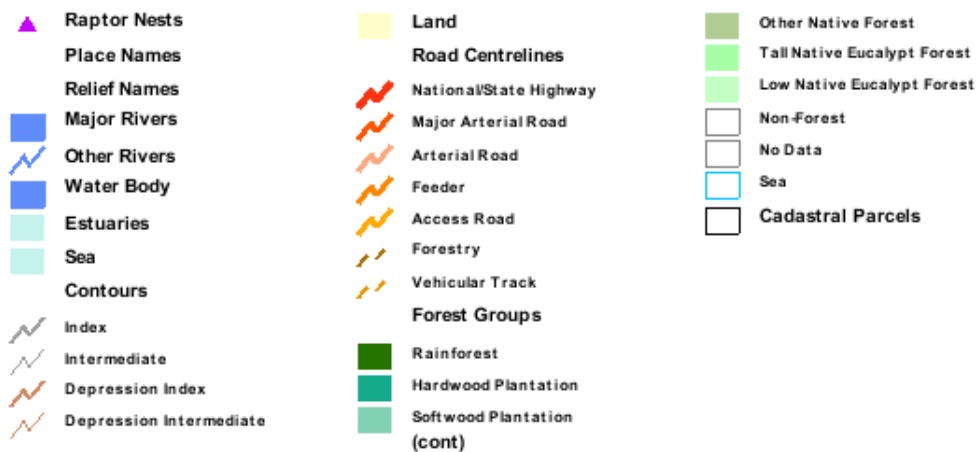
E: 495847
N: 5216203



E: 481757
N: 5201985

E: 495847
N: 5201985

Raptor nests and sightings within 5000 metres



Raptor nests and sightings within 5000 metres

Verified Records

Location id	Location foreign id	Observation id	Observer	Obs date	Obs type	Position (gda94)	Season	Nest productivity	Nest occupancy
		664878	- Unknown (21598)	31-Aug-1978?	sight	Point (493347,5211585) +/- 18500m.			
		684824	- Unknown (21598)	30-Nov-1978?	sight	Point (493347,5211585) +/- 18500m.			
		692496	- Unknown (21598)	31-May-1979?	sight	Point (493347,5211585) +/- 18500m.			
		725614	- Unknown (21598)	31-May-1980?	sight	Point (493347,5211585) +/- 18500m.			
		726100	- Unknown (21598)	29-Feb-1980?	sight	Point (493347,5211585) +/- 18500m.			
		741681	- Unknown (21598)	31-Aug-1980?	sight	Point (493347,5211585) +/- 18500m.			

Unverified Records