

Natural Values Atlas Report

Authoritative, comprehensive information on Tasmania's natural values.

Report number: 44419

Reference: EsperenceRiverRoad2

Requested For: GSLM

Timestamp: 04:04:35 PM Tuesday 14 February 2012

Raptors: buffers 500m and 5000m

Threatened Flora: buffers 500m and 5000m

Threatened Fauna: buffers 500m and 5000m

Conservation Significance Flora: Not requested

Conservation Significance Fauna: Not requested

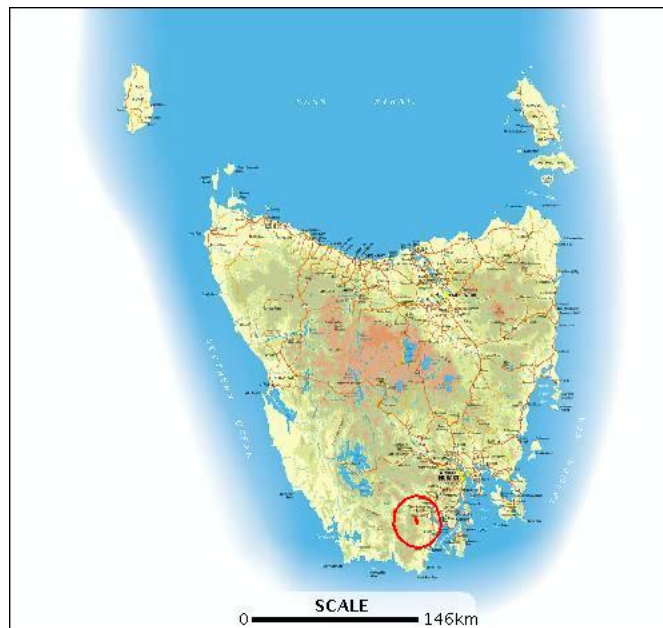
Weeds: Not requested

TasVeg: Not requested

Threatened Communities: Not requested

Geoconservation: Not requested

Tasmanian Reserve Estates: Not requested



The centroid for this query GDA94 485786,5213543 falls within:

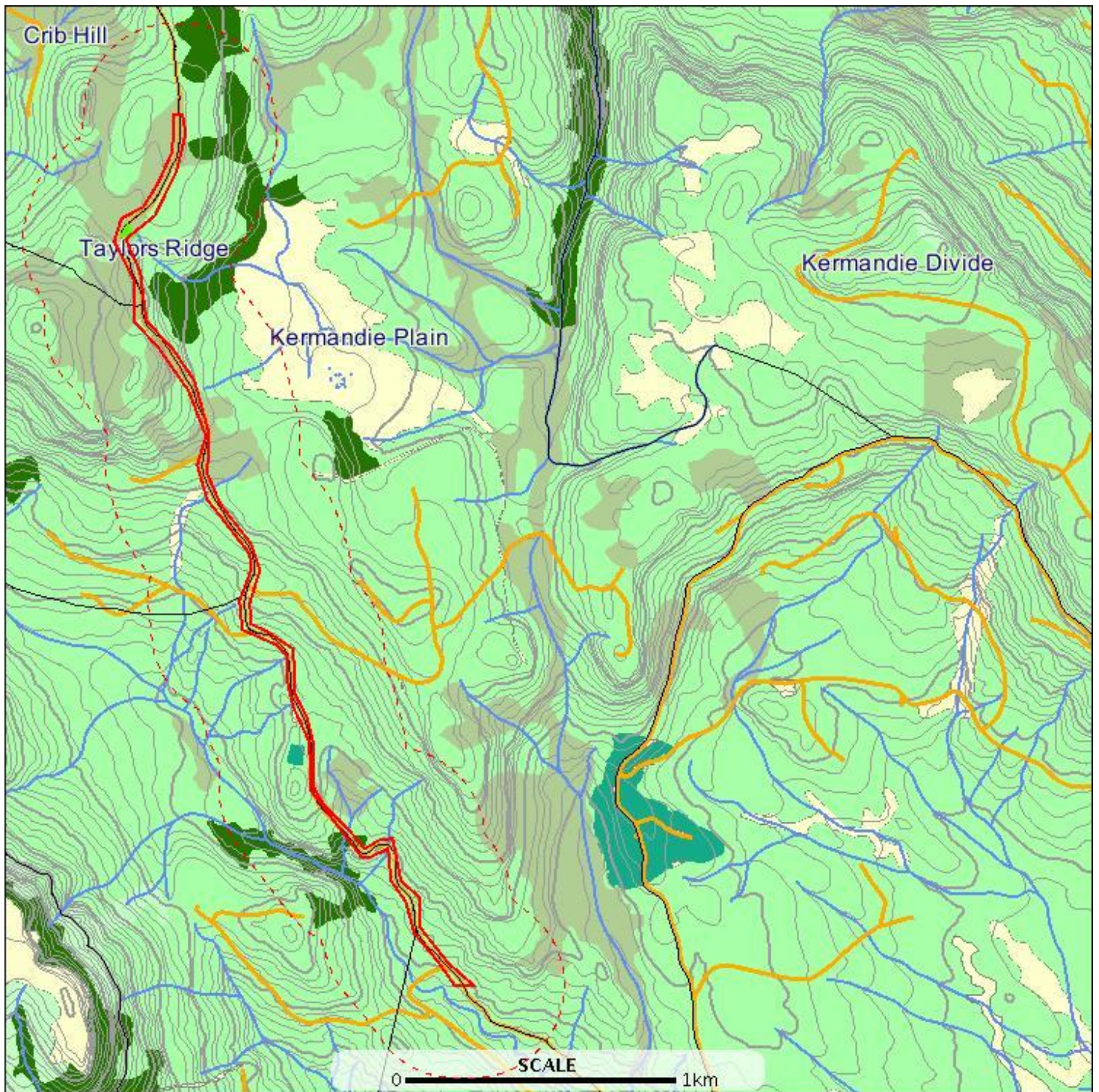
1:25000 Map: 4821 WATERLOO

Property: 2532780 EDWARDS ROAD, GEEVESTON
TAS 7116

Threatened flora within 500 metres

E: 484436
N: 5216426

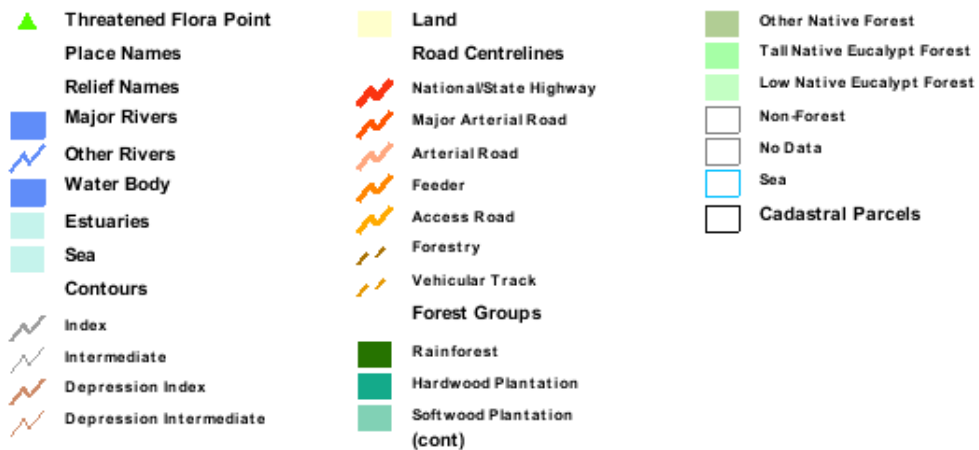
E: 487610
N: 5216426



E: 484436
N: 5210448

E: 487610
N: 5210448

Threatened flora within 500 metres



Threatened flora within 500 metres

Verified Records

Id	Species	Common name	Ss	Ns	Observers	Date	Obs type	Position (gda94)
366528	Geum talbotianum	tasmanian snowrose	r		Jamie Kirkpatrick (1315)	1983	sight	Point (485112,5215183) +/- 5000m.

Unverified Records

For more information about threatened species, please contact the Manager, Threatened Species Section.

Telephone: (03) 6233 8759

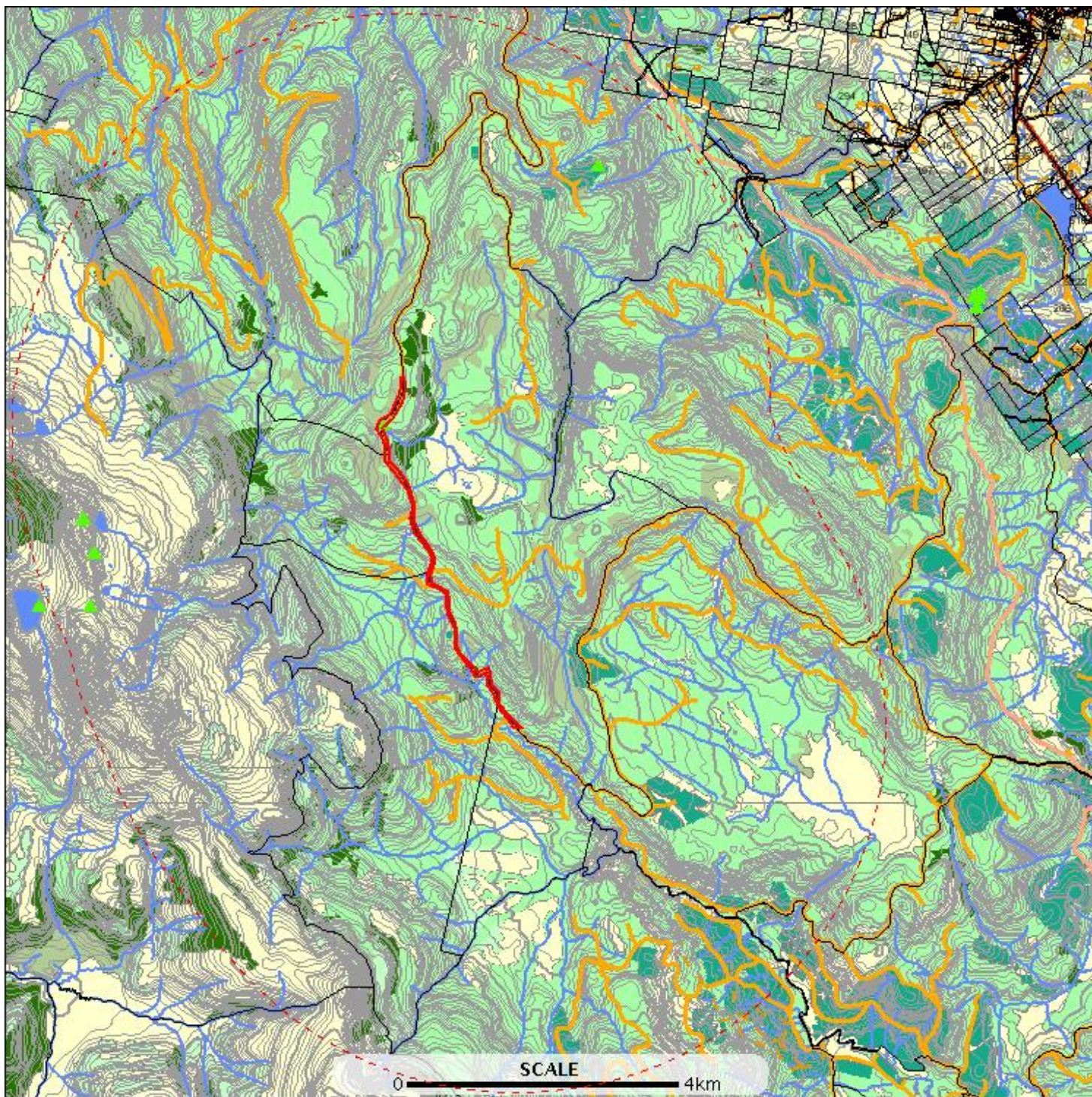
Email: ThreatenedSpecies.Enquiries@dpipwe.tas.gov.au

Address: GPO Box 44, Hobart, Tasmania, Australia, 7000

Threatened flora within 5000 metres

E: 479936
N: 5220926

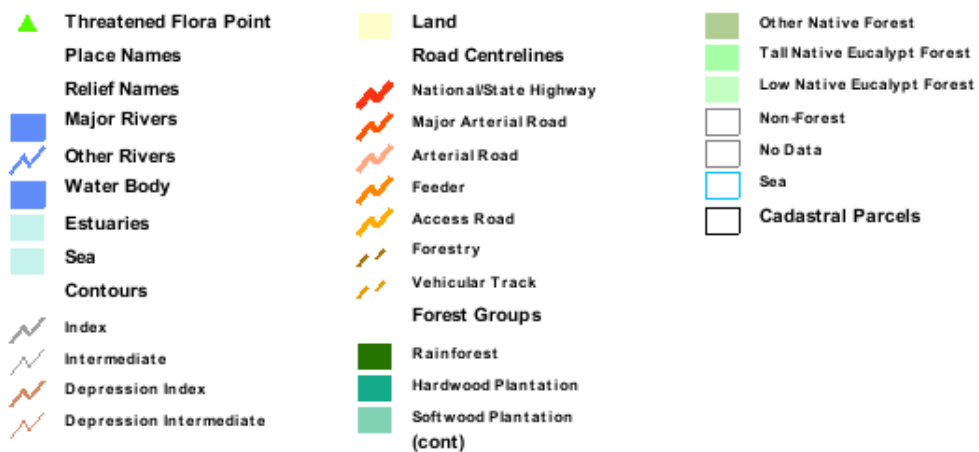
E: 492110
N: 5220926



E: 479936
N: 5205948

E: 492110
N: 5205948

Threatened flora within 5000 metres



Threatened flora within 5000 metres

Verified Records

Id	Species	Common name	Ss	Ns	Observers	Date	Obs type	Position (gda94)
227481	Agrostis propinqua	alpine bent	pr		D.I. Morris (4111)	08-Feb-1980	sight	Point (481112,5212683) +/- 200m.
366528	Geum talbotianum	tasmanian snowrose	r		Jamie Kirkpatrick (1315)	1983	sight	Point (485112,5215183) +/- 5000m.
227480	Geum talbotianum	tasmanian snowrose	r		A.E. Orchard (3741)	05-Mar-1980	sight	Point (481012,5213883) +/- 100m.
932969	Geum talbotianum	tasmanian snowrose	r		A.M. Gray (3762)	28-Jan-1979	sight	Point (481165,5213413) +/- 3100m.
1204697	Westringia angustifolia	narrowleaf westringia	r		T Ware (2427)	17-Nov-2010	sight	Point (488072,5218717) +/- 10m.

Unverified Records

For more information about threatened species, please contact the Manager, Threatened Species Section.

Telephone: (03) 6233 8759

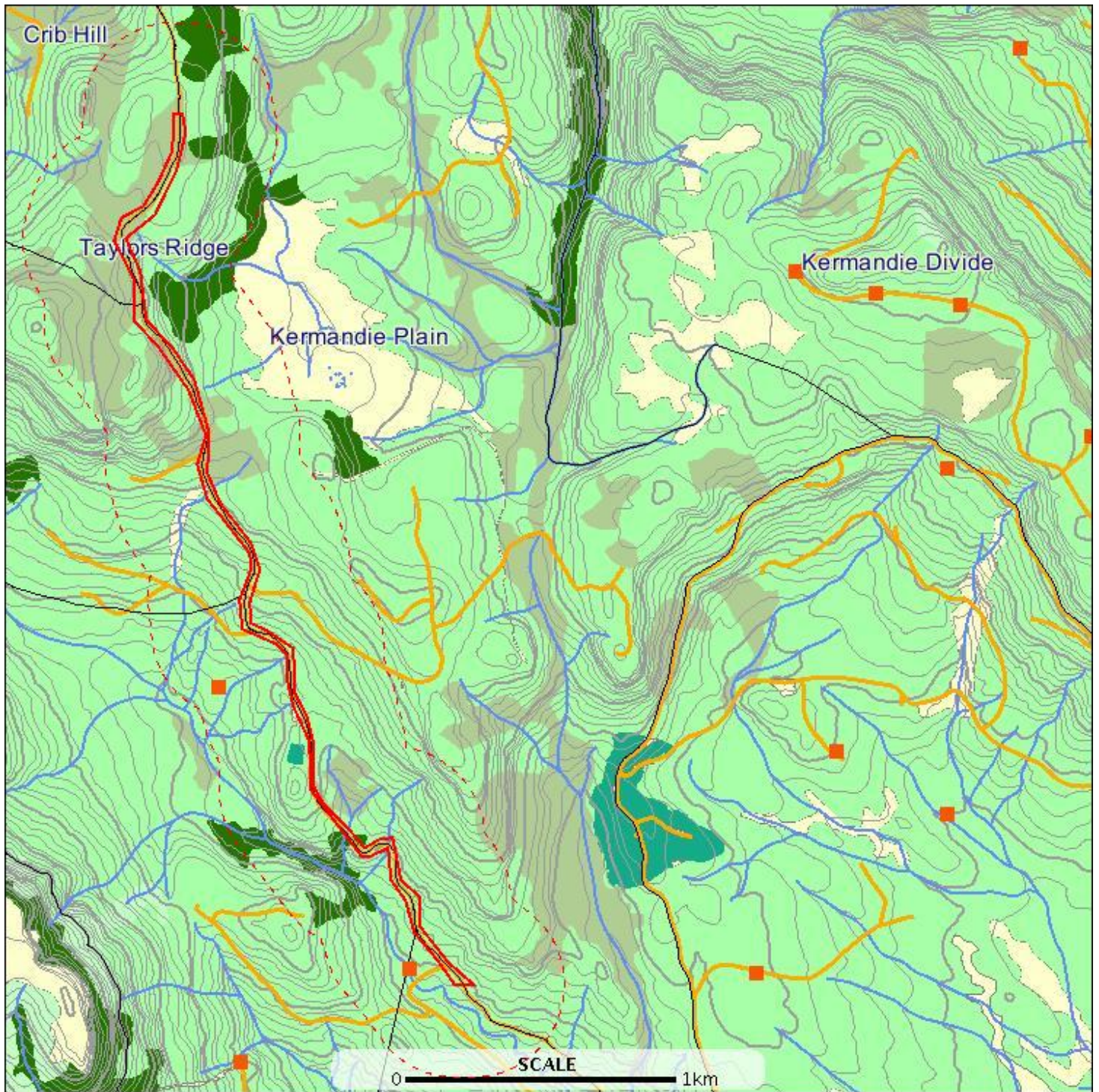
Email: ThreatenedSpecies.Enquiries@dpiwve.tas.gov.au

Address: GPO Box 44, Hobart, Tasmania, Australia, 7000

Threatened fauna within 500 metres

E: 484436
N: 5216426

E: 487610
N: 5216426



E: 484436
N: 5210448

E: 487610
N: 5210448

Threatened fauna within 500 metres



Threatened fauna within 500 metres

Verified Records

Id	Species	Common name	Ss	Ns	Observers	Date	Obs type	Position (gda94)
226547	Lissotes menalcas	mt. mangana stag beetle	v		- Unknown (21598)	03-Jul-1998?	sight	Point (485612,5212683) +/- 1000m.
351339	Lissotes menalcas	mt. mangana stag beetle	v		Jeff Meggs (1338)	01-Jan-1985?	sight	Point (485612,5212683) +/- 1000m.
1076067	Lissotes menalcas	mt. mangana stag beetle	v		Jeff Meggs (1338)	01-Jan-1996	sight	Point (485612,5212683) +/- 100m.
1216943	Oxyethira mienica	caddis fly (ouse river)	r		Laurie Cook (6862)	10-Jan-2000	sight	Point (486662,5211133) +/- 100m.

Unverified Records

Threatened fauna within 500 metres (based on Habitat Mapping)

Species	Common name	Ss	Ns	Potential	Known	Core
Lissotes menalcas	mt. mangana stag beetle	v		1	1	0
Aquila audax	wedge-tailed eagle	pe	PEN	1	0	0
Perameles gunnii	eastern barred bandicoot		VU	1	0	0
Lathamus discolor	swift parrot	e	EN	1	1	1
Tyto novaehollandiae	masked owl	pe	PVU	1	0	0
Haliaeetus leucogaster	white-bellied sea-eagle	v		1	0	0
Accipiter novaehollandiae	grey goshawk	e		1	0	1

For more information about threatened species, please contact the Manager, Threatened Species Section.

Telephone: (03) 6233 8759

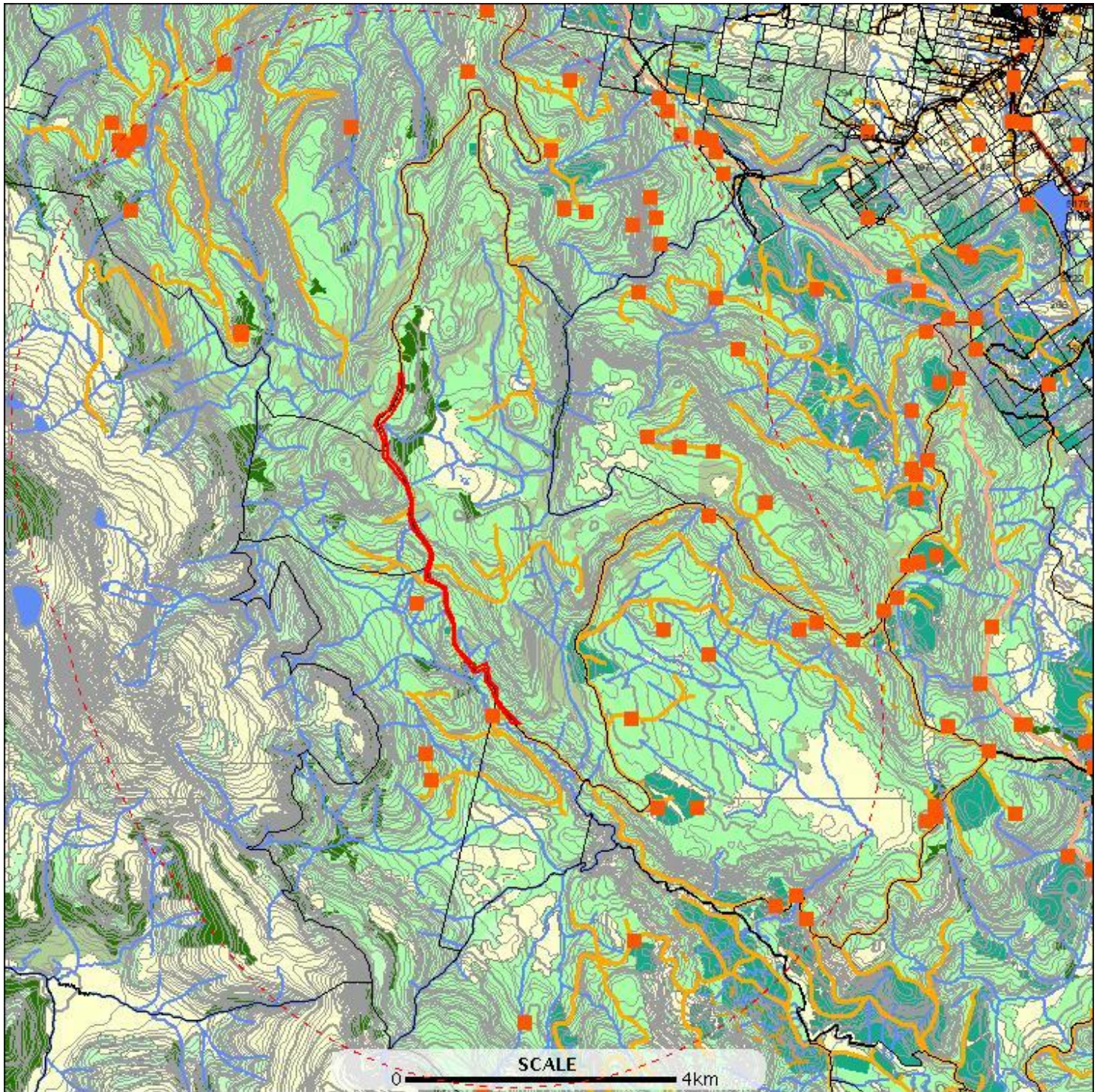
Email: ThreatenedSpecies.Enquiries@dpipwe.tas.gov.au

Address: GPO Box 44, Hobart, Tasmania, Australia, 7000

Threatened fauna within 5000 metres

E: 479936
N: 5220926

E: 492110
N: 5220926



E: 479936
N: 5205948

E: 492110
N: 5205948

Threatened fauna within 5000 metres



Threatened fauna within 5000 metres

Verified Records

Id	Species	Common name	Ss	Ns	Observers	Date	Obs type	Position (gda94)
863151	Accipiter novaehollandiae	grey goshawk	e		P Rowe (1977)	01-Nov-1992?	sight	Point (486312,5219983) +/- 100m.
900861	Dasyurus maculatus subsp. maculatus	spotted-tailed quoll	r	VU	Greg Hocking (7572)	10-Nov-1986?	sight	Point (491612,5212183) +/- 10000m.
1023611	Lathamus discolor	swift parrot	e	EN	Matthew Webb (7125)	03-Nov-2007	nest	Point (488784,5214962) +/- 200m.
1023712	Lathamus discolor	swift parrot	e	EN	Matthew Webb (7125)	13-Dec-2007	sight	Point (488784,5214962) +/- 200m.
1023644	Lathamus discolor	swift parrot	e	EN	Matthew Webb (7125)	13-Dec-2007	sight	Point (490402,5214060) +/- 200m.
1066159	Lathamus discolor	swift parrot	e	EN	Matthew Webb (7125)	01-Feb-2008	nest	Point (489689,5214777) +/- 150m.
1023776	Lathamus discolor	swift parrot	e	EN	Matthew Webb (7125)	02-Jan-2008	sight	Point (489689,5214777) +/- 200m.
1023777	Lathamus discolor	swift parrot	e	EN	Matthew Webb (7125)	27-Dec-2007	nest	Point (489221,5214838) +/- 200m.
1023657	Lathamus discolor	swift parrot	e	EN	Matthew Webb (7125)	03-Nov-2007	sight	Point (490402,5214060) +/- 200m.
1023666	Lathamus discolor	swift parrot	e	EN	Matthew Webb (7125)	08-Nov-2007	sight	Point (488661,5216956) +/- 200m.
226549	Lissotes menalcas	mt. mangana stag beetle	v		- Unknown (21598)	03-Jul-1998?	sight	Point (489712,5216883) +/- 1000m.
846663	Lissotes menalcas	mt. mangana stag beetle	v		Jeff Meggs (1338)	16-Jan-1992?	sight	Point (489712,5216883) +/- 100m.
1076163	Lissotes menalcas	mt. mangana stag beetle	v		Chris Spencer (6910)	24-Nov-2006	sight	Point (481796,5219157) +/- 100m.
352577	Lissotes menalcas	mt. mangana stag beetle	v		Jeff Meggs (1338)	17-Jan-1996?	sight	Point (489712,5216883) +/- 25m.
1076166	Lissotes menalcas	mt. mangana stag beetle	v		Chris Spencer (6910)	24-Nov-2006	sight	Point (481779,5219078) +/- 100m.
1076165	Lissotes menalcas	mt. mangana stag beetle	v		Chris Spencer (6910)	24-Nov-2006	sight	Point (481785,5219070) +/- 100m.
1076219	Lissotes menalcas	mt. mangana stag beetle	v		Chris Spencer (6910)	23-Aug-2007	sight	Point (481530,5219034) +/- 100m.
1076167	Lissotes menalcas	mt. mangana stag beetle	v		Chris Spencer (6910)	24-Nov-2006	sight	Point (481642,5218991) +/- 100m.
1076087	Lissotes menalcas	mt. mangana stag beetle	v		Chris Spencer (6910)	11-Aug-2006	sight	Point (491104,5212428) +/- 100m.
1076117	Lissotes menalcas	mt. mangana stag beetle	v		Colin McCoull (5822)	29-Aug-2002	sight	Point (489003,5212327) +/- 100m.
1076086	Lissotes menalcas	mt. mangana stag beetle	v		Chris Spencer (6910)	11-Aug-2006	sight	Point (490871,5212334) +/- 100m.
1076121	Lissotes menalcas	mt. mangana stag beetle	v		Colin McCoull (5822)	04-Sep-2006	sight	Point (488564,5211111) +/- 100m.
1084165	Lissotes menalcas	mt. mangana stag beetle	v		C McCoull (2049)	Jul-2006	sight	Point (488594,5208051) +/- 100m.
1076141	Lissotes menalcas	mt. mangana stag beetle	v		Chris Spencer (6910)	23-Aug-2006	sight	Point (489469,5209878) +/- 100m.
1084145	Lissotes menalcas	mt. mangana stag beetle	v		C McCoull (2049)	Jul-2006	sight	Point (490963,5208359) +/- 100m.
1084144	Lissotes menalcas	mt. mangana stag beetle	v		C McCoull (2049)	Jul-2006	sight	Point (490545,5208540) +/- 100m.
1084143	Lissotes menalcas	mt. mangana stag beetle	v		C McCoull (2049)	Jul-2006	sight	Point (490822,5208678) +/- 100m.
1084163	Lissotes menalcas	mt. mangana stag beetle	v		C McCoull (2049)	Jul-2006	sight	Point (487718,5219864) +/- 100m.
1084152	Lissotes menalcas	mt. mangana stag beetle	v		C McCoull (2049)	Jul-2006	sight	Point (487634,5218108) +/- 100m.
1084151	Lissotes menalcas	mt. mangana stag beetle	v		C McCoull (2049)	Jul-2006	sight	Point (487632,5218110) +/- 100m.
1084162	Lissotes menalcas	mt. mangana stag beetle	v		C McCoull (2049)	Jul-2006	sight	Point (487453,5218898) +/- 100m.
1084153	Lissotes menalcas	mt. mangana stag beetle	v		C McCoull (2049)	Jul-2006	sight	Point (487929,5218061) +/- 100m.
226547	Lissotes menalcas	mt. mangana stag beetle	v		- Unknown (21598)	03-Jul-1998?	sight	Point (485612,5212683) +/- 1000m.
351339	Lissotes menalcas	mt. mangana stag beetle	v		Jeff Meggs (1338)	01-Jan-1985?	sight	Point (485612,5212683) +/- 1000m.

Threatened fauna within 5000 metres

Id	Species	Common name	Ss	Ns	Observers	Date	Obs type	Position (gda94)
1076067	Lissotes menalcas	mt. mangana stag beetle	v		Jeff Meggs (1338)	01-Jan-1996	sight	Point (485612,5212683) +/- 100m.
1084164	Lissotes menalcas	mt. mangana stag beetle	v		C McCoull (2049)	Jul-2006	sight	Point (487093,5206927) +/- 100m.
1084167	Lissotes menalcas	mt. mangana stag beetle	v		C McCoull (2049)	Jul-2006	sight	Point (485806,5210268) +/- 100m.
1084166	Lissotes menalcas	mt. mangana stag beetle	v		C McCoull (2049)	Jul-2006	sight	Point (485732,5210625) +/- 100m.
1076138	Lissotes menalcas	mt. mangana stag beetle	v		Belinda Yaxley (16444)	01-Jul-2006	sight	Point (482963,5220086) +/- 100m.
1076218	Lissotes menalcas	mt. mangana stag beetle	v		Chris Spencer (6910)	28-Jun-2007	sight	Point (481677,5218086) +/- 100m.
1076168	Lissotes menalcas	mt. mangana stag beetle	v		Chris Spencer (6910)	24-Nov-2006	sight	Point (481583,5218896) +/- 100m.
534193	Neophema chrysogaster	orange-bellied parrot	e	EN	- Unknown (21598)	01-Jan-1600?	sight	Point (490012,5216183) +/- 100m.
1216943	Oxyethira mienica	caddis fly (ouse river)	r		Laurie Cook (6862)	10-Jan-2000	sight	Point (486662,5211133) +/- 100m.
746123	Sarcophilus harrisii	tasmanian devil	e	EN	- Unknown (21598)	26-Nov-1992?	sight	Point (489612,5211983) +/- 2500m.
753651	Sarcophilus harrisii	tasmanian devil	e	EN	- Unknown (21598)	26-Nov-1992?	sight	Point (488912,5209883) +/- 2500m.
358253	Sarcophilus harrisii	tasmanian devil	e	EN	Menna Jones (8901)	05-Jun-1996?	sight	Point (489612,5213883) +/- 200m.

Unverified Records

Threatened fauna within 5000 metres (based on Habitat Mapping)

Species	Common name	Ss	Ns	Potential	Known	Core
Lissotes menalcas	mt. mangana stag beetle	v		2	2	0
Aquila audax	wedge-tailed eagle	pe	PEN	2	0	0
Perameles gunnii	eastern barred bandicoot		VU	2	0	0
Lathamus discolor	swift parrot	e	EN	2	2	2
Litoria raniformis	green and golden frog	v	VU	1	0	0
Tyto novaehollandiae	masked owl	pe	PVU	2	0	2
Haliaeetus leucogaster	white-bellied sea-eagle	v		2	0	0
Accipiter novaehollandiae	grey goshawk	e		2	0	2

For more information about threatened species, please contact the Manager, Threatened Species Section.

Telephone: (03) 6233 8759

Email: ThreatenedSpecies.Enquiries@dpipwe.tas.gov.au

Address: GPO Box 44, Hobart, Tasmania, Australia, 7000

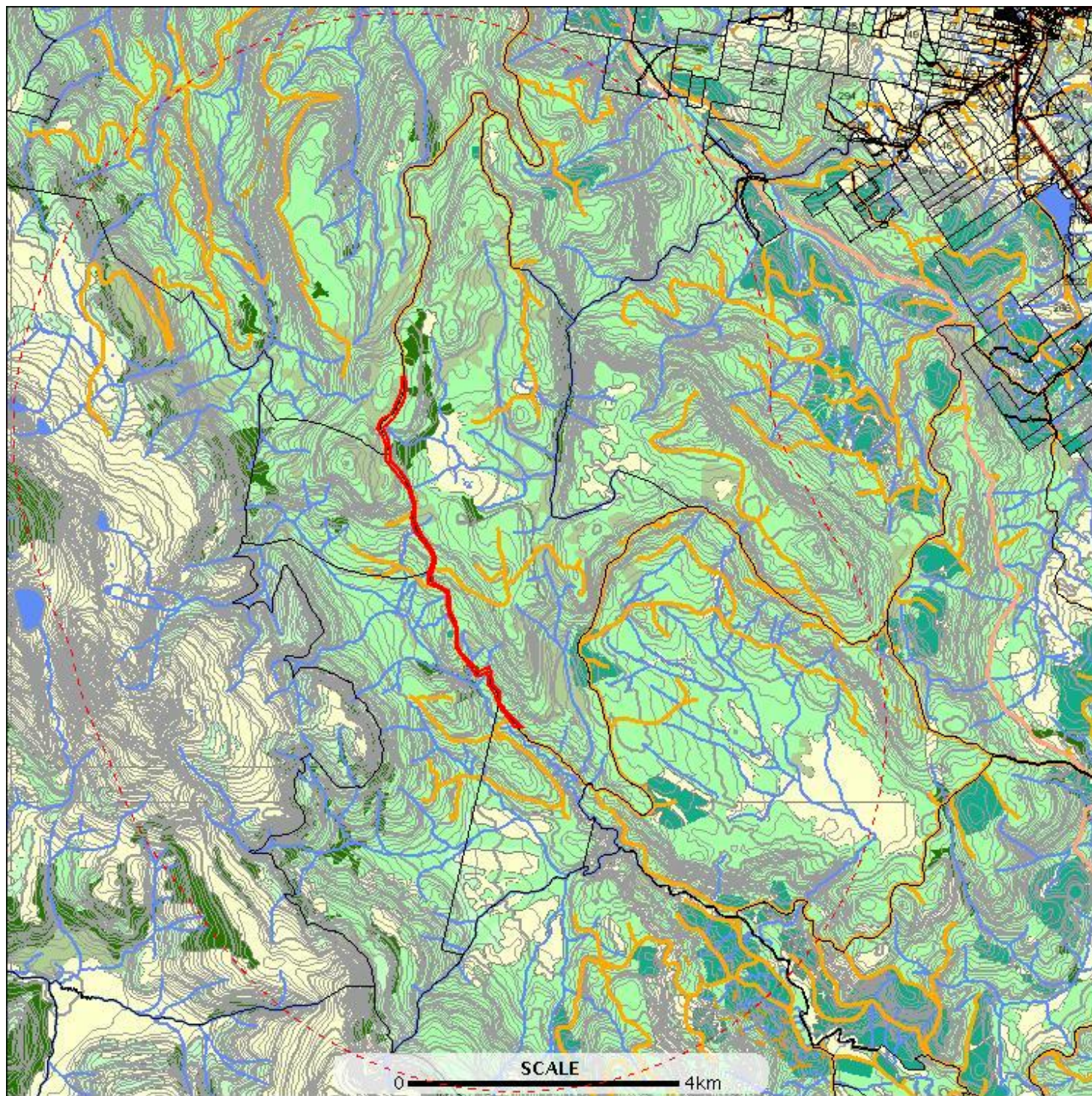
Raptor nests and sightings within 500 metres

*** No Raptor nests or sightings found within 500 metres. ***

Raptor nests and sightings within 5000 metres

E: 479936
N: 5220926

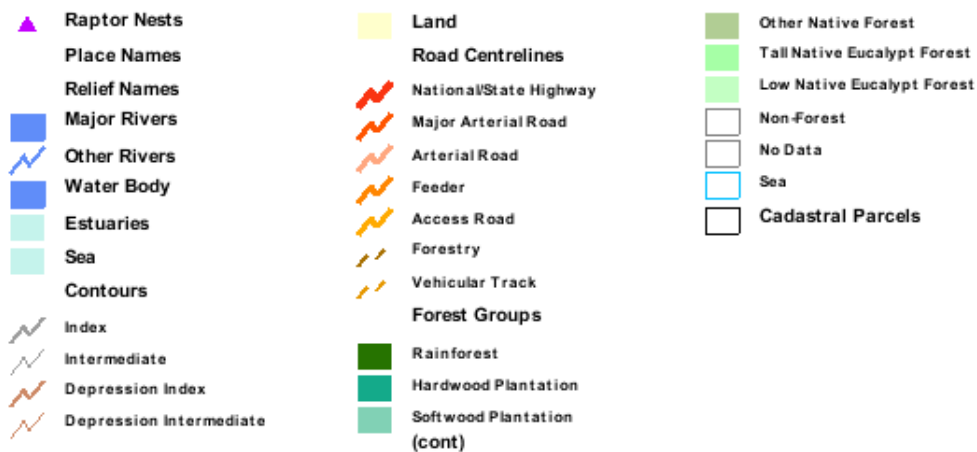
E: 492110
N: 5220926



E: 479936
N: 5205948

E: 492110
N: 5205948

Raptor nests and sightings within 5000 metres



Raptor nests and sightings within 5000 metres

Verified Records

Location id	Location foreign id	Observation id	Observer	Obs date	Obs type	Position (gda94)	Season	Nest productivity	Nest occupancy
		360145	- Unknown (21598)	14-Nov-1996?	sight	Point (483212,5216383) +/- 100m.			
		949224	Nick Mooney (16443)	1980s	nest	Point (483178,5216408) +/- 0m.			
		949242	Chris Bond (9810)	09-Mar-2005	nest	Point (484702,5219231) +/- 0m.			
		949273	Amy Ware (9802)	06-May-2005	nest	Point (488583,5217884) +/- 0m.			
		949274	Kerri Spicer (6930)	10-Jun-2003	nest	Point (488820,5218257) +/- 0m.			
		949275	Kerri Spicer (6930)	10-Jun-2003	nest	Point (488900,5217988) +/- 0m.			
		949276	Kerri Spicer (6930)	10-Jun-2003	nest	Point (488955,5217612) +/- 0m.			

Unverified Records