

# Natural Values Atlas Report

*Authoritative, comprehensive information on Tasmania's natural values.*

Report number: 44430

Reference: ForestryTracksSouthOfWellsRoad

Requested For: GSLM

Timestamp: 04:51:28 PM Wednesday 15 February 2012

Raptors: buffers 500m and 5000m

Threatened Flora: buffers 500m and 5000m

Threatened Fauna: buffers 500m and 5000m

Conservation Significance Flora: Not requested

Conservation Significance Fauna: Not requested

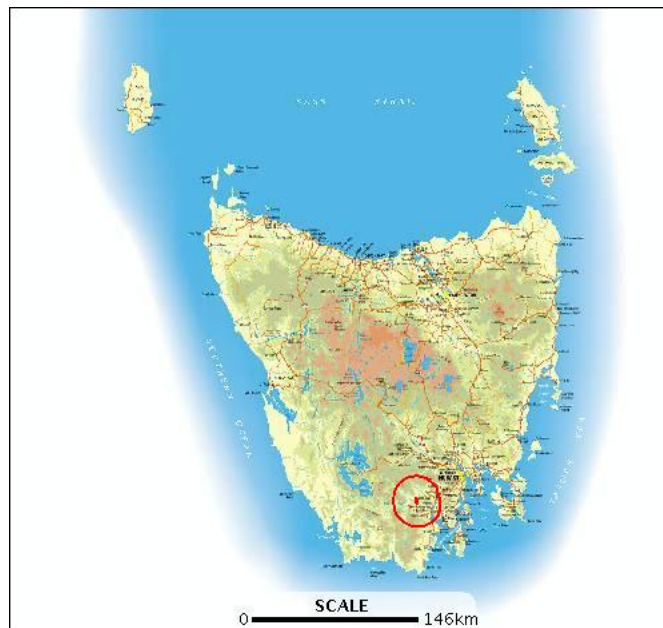
Weeds: Not requested

TasVeg: Not requested

Threatened Communities: Not requested

Geoconservation: Not requested

Tasmanian Reserve Estates: Not requested



The centroid for this query GDA94 485460,5230886 falls within:

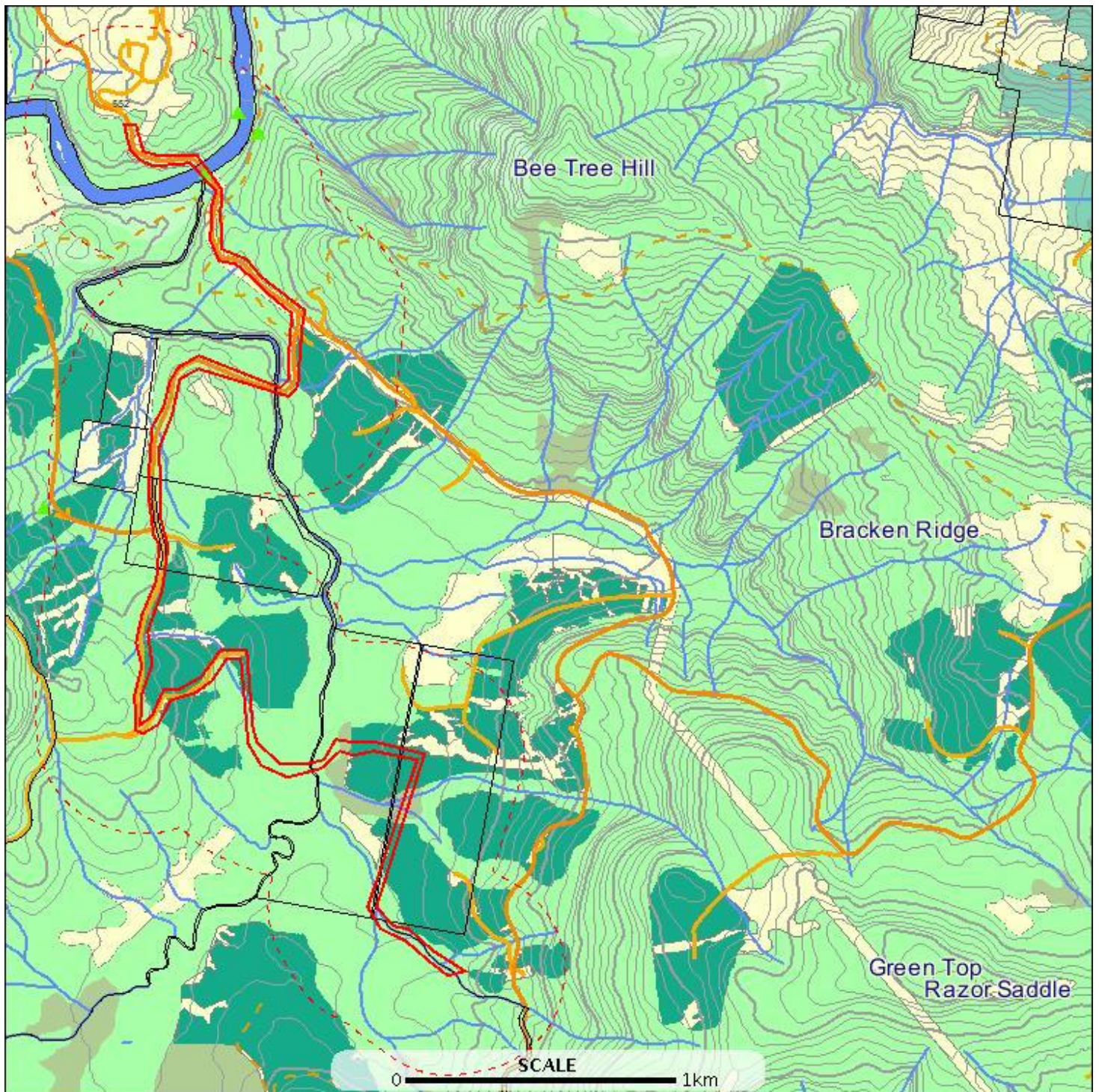
1:25000 Map: 4823 GLEN HUON

Property: 7440180 EDWARDS ROAD, GEEVESTON  
TAS 7116

## Threatened flora within 500 metres

E: 484242  
N: 5233630

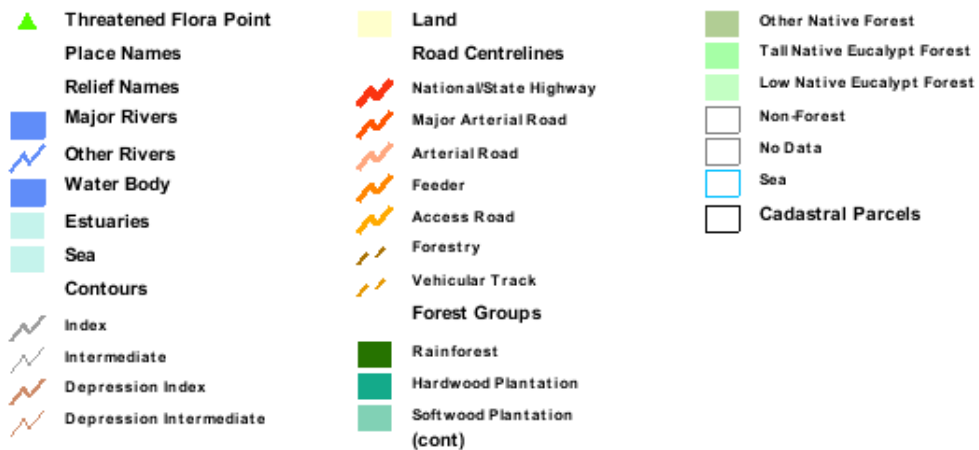
E: 487147  
N: 5233630



E: 484242  
N: 5228182

E: 487147  
N: 5228182

## Threatened flora within 500 metres



## Threatened flora within 500 metres

### Verified Records

Id	Species	Common name	Ss	Ns	Observers	Date	Obs type	Position (gda94)
343824	Westringia angustifolia	narrowleaf westringia	r		Richard Barnes (2707)	2001	sight	Point (485512,5232983) +/- 100m.
6953	Westringia angustifolia	narrowleaf westringia	r		Karen Ziegler (3104)	27-Oct-1999?	sight	Point (485252,5232783) +/- 100m.
342746	Westringia angustifolia	narrowleaf westringia	r		Richard Barnes (2707)	2001	sight	Point (485412,5233083) +/- 100m.

### Unverified Records

For more information about threatened species, please contact the Manager, Threatened Species Section.

Telephone: (03) 6233 8759

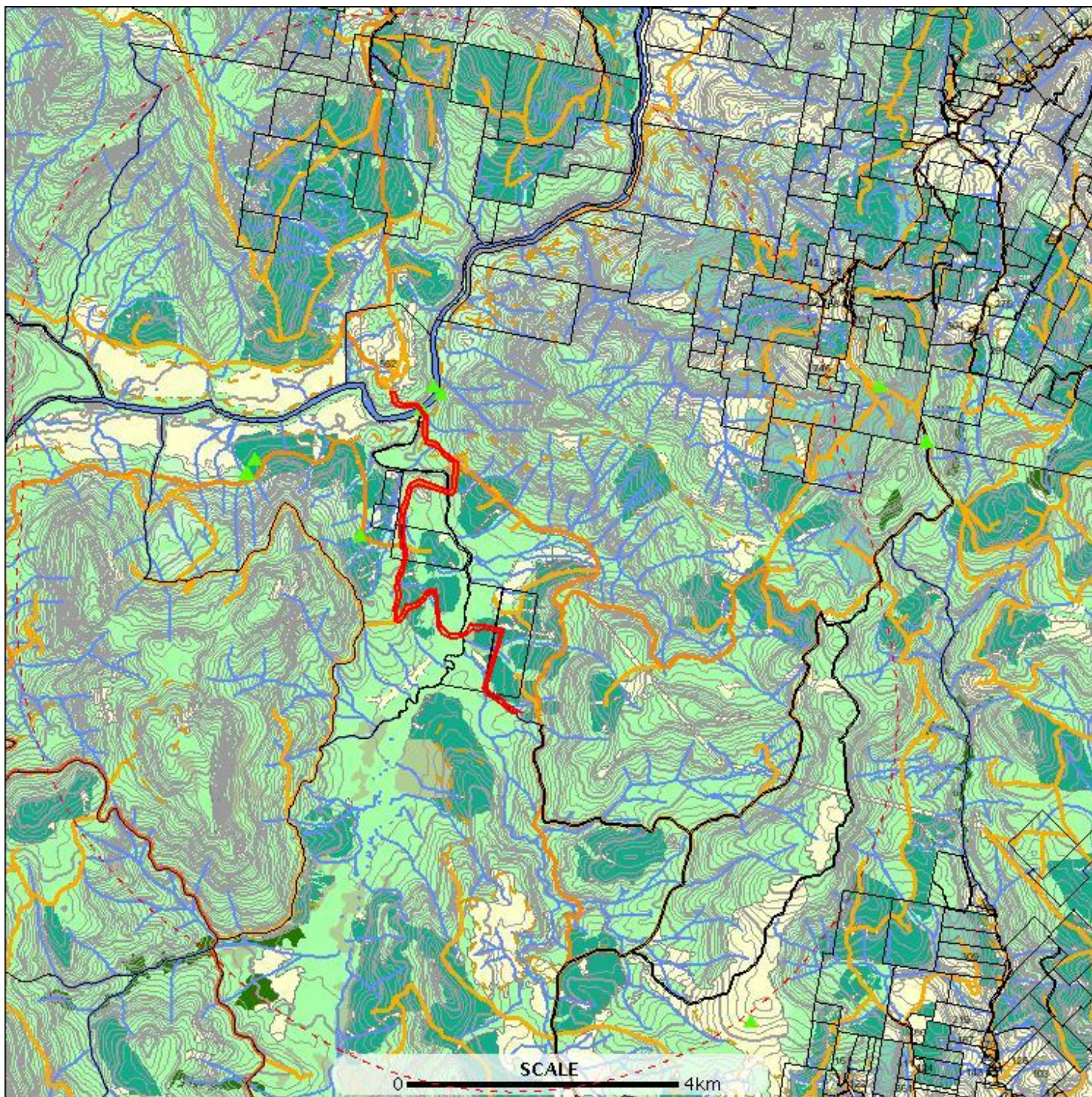
Email: [ThreatenedSpecies.Enquiries@dpipwe.tas.gov.au](mailto:ThreatenedSpecies.Enquiries@dpipwe.tas.gov.au)

Address: GPO Box 44, Hobart, Tasmania, Australia, 7000

## Threatened flora within 5000 metres

E: 479742  
N: 5238130

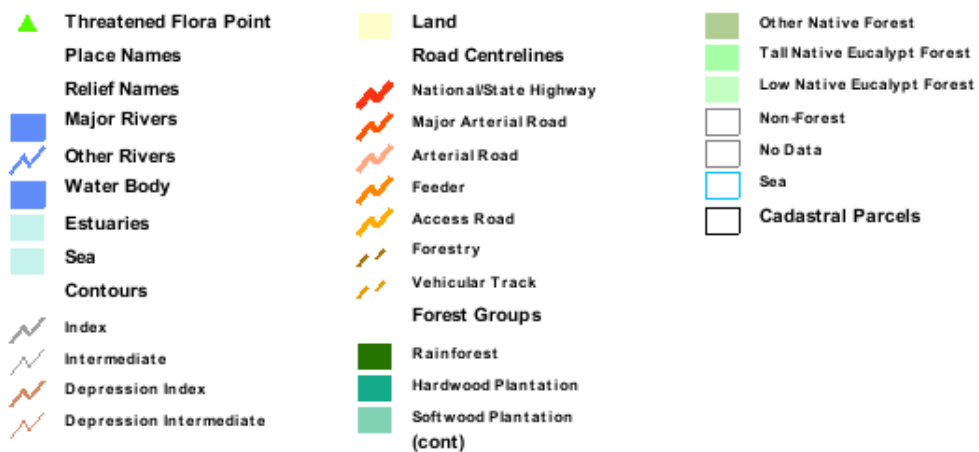
E: 491647  
N: 5238130



E: 479742  
N: 5223682

E: 491647  
N: 5223682

## Threatened flora within 5000 metres



## Threatened flora within 5000 metres

### Verified Records

Id	Species	Common name	Ss	Ns	Observers	Date	Obs type	Position (gda94)
299519	<i>Thismia rodwayi</i>	fairy lanterns	r		- Unknown (21598)	09-Dec-2003	sight	Point (482957,5231929) +/- 10m.
928767	<i>Thismia rodwayi</i>	fairy lanterns	r		- Unknown (21598)	09-Dec-2003	sight	Point (483050,5232122) +/- 50m.
299517	<i>Thismia rodwayi</i>	fairy lanterns	r		- Unknown (21598)	09-Dec-2003	sight	Point (482938,5231938) +/- 10m.
948516	<i>Thismia rodwayi</i>	fairy lanterns	r		Brian French (6551)	15-Aug-2006	sight	Point (484439,5231109) +/- 8m.
6953	<i>Westringia angustifolia</i>	narrowleaf westringia	r		Karen Ziegler (3104)	27-Oct-1999?	sight	Point (485252,5232783) +/- 100m.
342746	<i>Westringia angustifolia</i>	narrowleaf westringia	r		Richard Barnes (2707)	2001	sight	Point (485412,5233083) +/- 100m.
343824	<i>Westringia angustifolia</i>	narrowleaf westringia	r		Richard Barnes (2707)	2001	sight	Point (485512,5232983) +/- 100m.

### Unverified Records

For more information about threatened species, please contact the Manager, Threatened Species Section.

Telephone: (03) 6233 8759

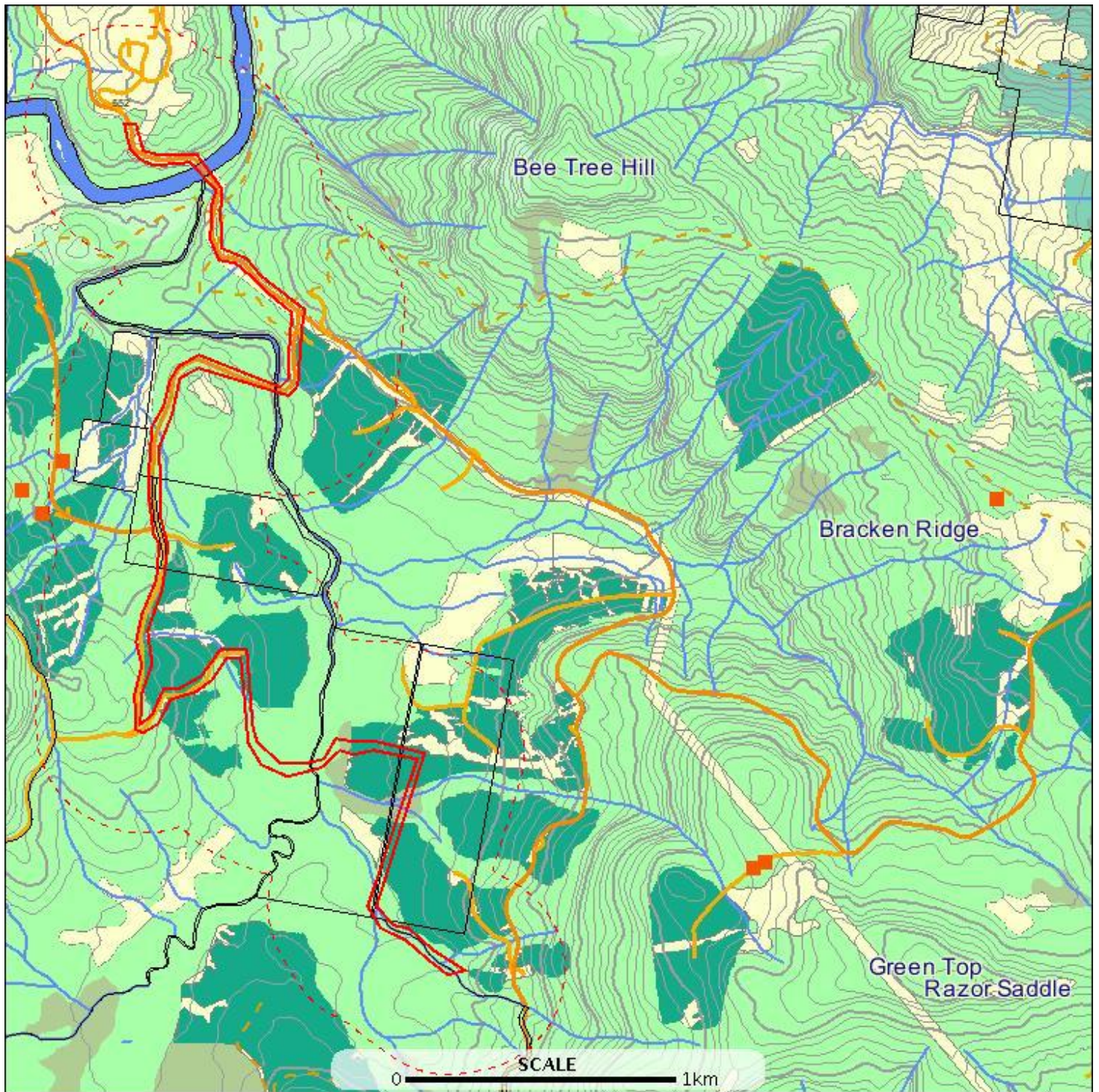
Email: [ThreatenedSpecies.Enquiries@dpipwe.tas.gov.au](mailto:ThreatenedSpecies.Enquiries@dpipwe.tas.gov.au)

Address: GPO Box 44, Hobart, Tasmania, Australia, 7000

## Threatened fauna within 500 metres

E: 484242  
N: 5233630

E: 487147  
N: 5233630



E: 484242  
N: 5228182

E: 487147  
N: 5228182

## Threatened fauna within 500 metres



## Threatened fauna within 500 metres

### Verified Records

Id	Species	Common name	Ss	Ns	Observers	Date	Obs type	Position (gda94)
1076108	Lissotes menalcas	mt. mangana stag beetle	v		Colin McCoull (5822)	30-Aug-2006	sight	Point (484532,5231346) +/- 100m.

### Unverified Records

## Threatened fauna within 500 metres (based on Habitat Mapping)

Species	Common name	Ss	Ns	Potential	Known	Core
Lissotes menalcas	mt. mangana stag beetle	v		1	1	0
Aquila audax	wedge-tailed eagle	pe	PEN	1	0	0
Perameles gunnii	eastern barred bandicoot		VU	1	0	0
Lathamus discolor	swift parrot	e	EN	1	1	1
Prototroctes maraena	australian grayling	v	VU	1	0	0
Litoria raniformis	green and golden frog	v	VU	1	0	0
Tyto novaehollandiae	masked owl	pe	PVU	1	0	1
Haliaeetus leucogaster	white-bellied sea-eagle	v		1	0	0
Accipiter novaehollandiae	grey goshawk	e		1	0	1

For more information about threatened species, please contact the Manager, Threatened Species Section.

Telephone: (03) 6233 8759

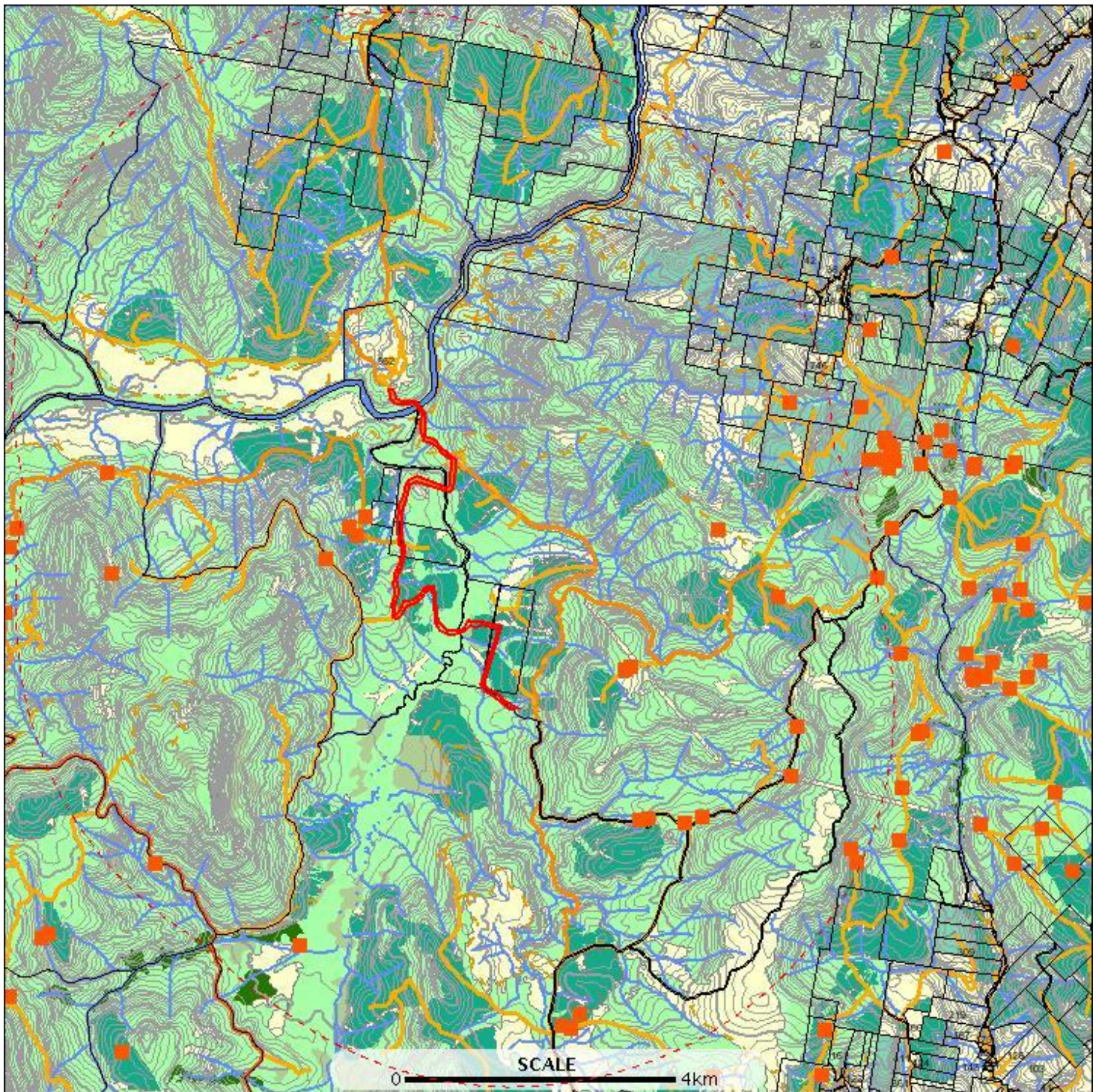
Email: [ThreatenedSpecies.Enquiries@dpipwe.tas.gov.au](mailto:ThreatenedSpecies.Enquiries@dpipwe.tas.gov.au)

Address: GPO Box 44, Hobart, Tasmania, Australia, 7000

## Threatened fauna within 5000 metres

E: 479742  
N: 5238130

E: 491647  
N: 5238130



E: 479742  
N: 5223682

E: 491647  
N: 5223682

## Threatened fauna within 5000 metres



## Threatened fauna within 5000 metres

### Verified Records

Id	Species	Common name	Ss	Ns	Observers	Date	Obs type	Position (gda94)
1023686	Lathamus discolor	swift parrot	e	EN	Matthew Webb (7125)	04-Nov-2007	sight	Point (490266,5228563) +/- 200m.
1023687	Lathamus discolor	swift parrot	e	EN	Matthew Webb (7125)	04-Nov-2007	sight	Point (490185,5227898) +/- 200m.
1023637	Lathamus discolor	swift parrot	e	EN	Matthew Webb (7125)	04-Nov-2007	sight	Point (487264,5224549) +/- 200m.
1023667	Lathamus discolor	swift parrot	e	EN	Matthew Webb (7125)	12-Dec-2007	sight	Point (490158,5232851) +/- 200m.
1023638	Lathamus discolor	swift parrot	e	EN	Matthew Webb (7125)	12-Dec-2007	sight	Point (491066,5226758) +/- 200m.
1076130	Lissotes menalcas	mt. mangana stag beetle	v		Colin McCoull (5822)	01-Aug-2006	sight	Point (488050,5229340) +/- 100m.
846632	Lissotes menalcas	mt. mangana stag beetle	v		Jeff Meggs (1338)	23-Jun-1998?	sight	Point (484012,5230783) +/- 100m.
1076106	Lissotes menalcas	mt. mangana stag beetle	v		Colin McCoull (5822)	30-Aug-2006	sight	Point (484428,5231085) +/- 100m.
1076107	Lissotes menalcas	mt. mangana stag beetle	v		Colin McCoull (5822)	30-Aug-2006	sight	Point (484331,5231198) +/- 100m.
1076108	Lissotes menalcas	mt. mangana stag beetle	v		Colin McCoull (5822)	30-Aug-2006	sight	Point (484532,5231346) +/- 100m.
1076127	Lissotes menalcas	mt. mangana stag beetle	v		Colin McCoull (5822)	01-Aug-2006	sight	Point (488770,5227275) +/- 100m.
1076128	Lissotes menalcas	mt. mangana stag beetle	v		Colin McCoull (5822)	01-Aug-2006	sight	Point (489010,5227365) +/- 100m.
1076129	Lissotes menalcas	mt. mangana stag beetle	v		Colin McCoull (5822)	01-Aug-2006	sight	Point (487990,5229310) +/- 100m.
855290	Lissotes menalcas	mt. mangana stag beetle	v		Jeff Meggs (1338)	22-Jun-1998?	sight	Point (489212,5231158) +/- 100m.
227430	Lissotes menalcas	mt. mangana stag beetle	v		- Unknown (21598)	03-Jul-1998?	sight	Point (489212,5231158) +/- 1000m.
226556	Lissotes menalcas	mt. mangana stag beetle	v		- Unknown (21598)	03-Jul-1998?	sight	Point (490012,5230283) +/- 1000m.
846664	Lissotes menalcas	mt. mangana stag beetle	v		Jeff Meggs (1338)	22-Jun-1998?	sight	Point (490012,5230283) +/- 100m.
227431	Lissotes menalcas	mt. mangana stag beetle	v		- Unknown (21598)	03-Jul-1998?	sight	Point (484012,5230783) +/- 1000m.
1058099	Lissotes menalcas	mt. mangana stag beetle	v		Chris Spencer (6910)	03-Jul-2007	sight	Point (481745,5226746) +/- 10m.
1076125	Lissotes menalcas	mt. mangana stag beetle	v		Colin McCoull (5822)	01-Aug-2006	sight	Point (488170,5227310) +/- 100m.
1076126	Lissotes menalcas	mt. mangana stag beetle	v		Colin McCoull (5822)	01-Aug-2006	sight	Point (488300,5227330) +/- 100m.
1076132	Lissotes menalcas	mt. mangana stag beetle	v		Colin McCoull (5822)	01-Aug-2006	sight	Point (487150,5224600) +/- 100m.
1076131	Lissotes menalcas	mt. mangana stag beetle	v		Colin McCoull (5822)	01-Aug-2006	sight	Point (487390,5224750) +/- 100m.
1154429	Sarcophilus harrisii	tasmanian devil	e	EN	Kim Barrett (20832)	16-Jun-2009	sight	Point (483661,5225664) +/- 2000m.
896530	Thylacinus cynocephalus	thylacine	x	EX	R Wooley (2046)	03-Mar-1978?	sight	Point (481113,5231921) +/- 1850m.

### Unverified Records

## Threatened fauna within 5000 metres (based on Habitat Mapping)

Species	Common name	Ss	Ns	Potential	Known	Core
Lissotes menalcas	mt. mangana stag beetle	v		1	1	0
Aquila audax	wedge-tailed eagle	pe	PEN	1	0	0
Perameles gunnii	eastern barred bandicoot		VU	1	0	0
Lathamus discolor	swift parrot	e	EN	1	1	1
Prototroctes maraena	australian grayling	v	VU	1	0	0
Litoria raniformis	green and golden frog	v	VU	1	0	0
Tyto novaehollandiae	masked owl	pe	PVU	1	0	1
Haliaeetus leucogaster	white-bellied sea-eagle	v		1	0	0

## Threatened fauna within 5000 metres

Species	Common name	Ss	Ns	Potential	Known	Core
Accipiter novaehollandiae	grey goshawk	e		1	0	1

For more information about threatened species, please contact the Manager, Threatened Species Section.

Telephone: (03) 6233 8759

Email: [ThreatenedSpecies.Enquiries@dpipwe.tas.gov.au](mailto:ThreatenedSpecies.Enquiries@dpipwe.tas.gov.au)

Address: GPO Box 44, Hobart, Tasmania, Australia, 7000

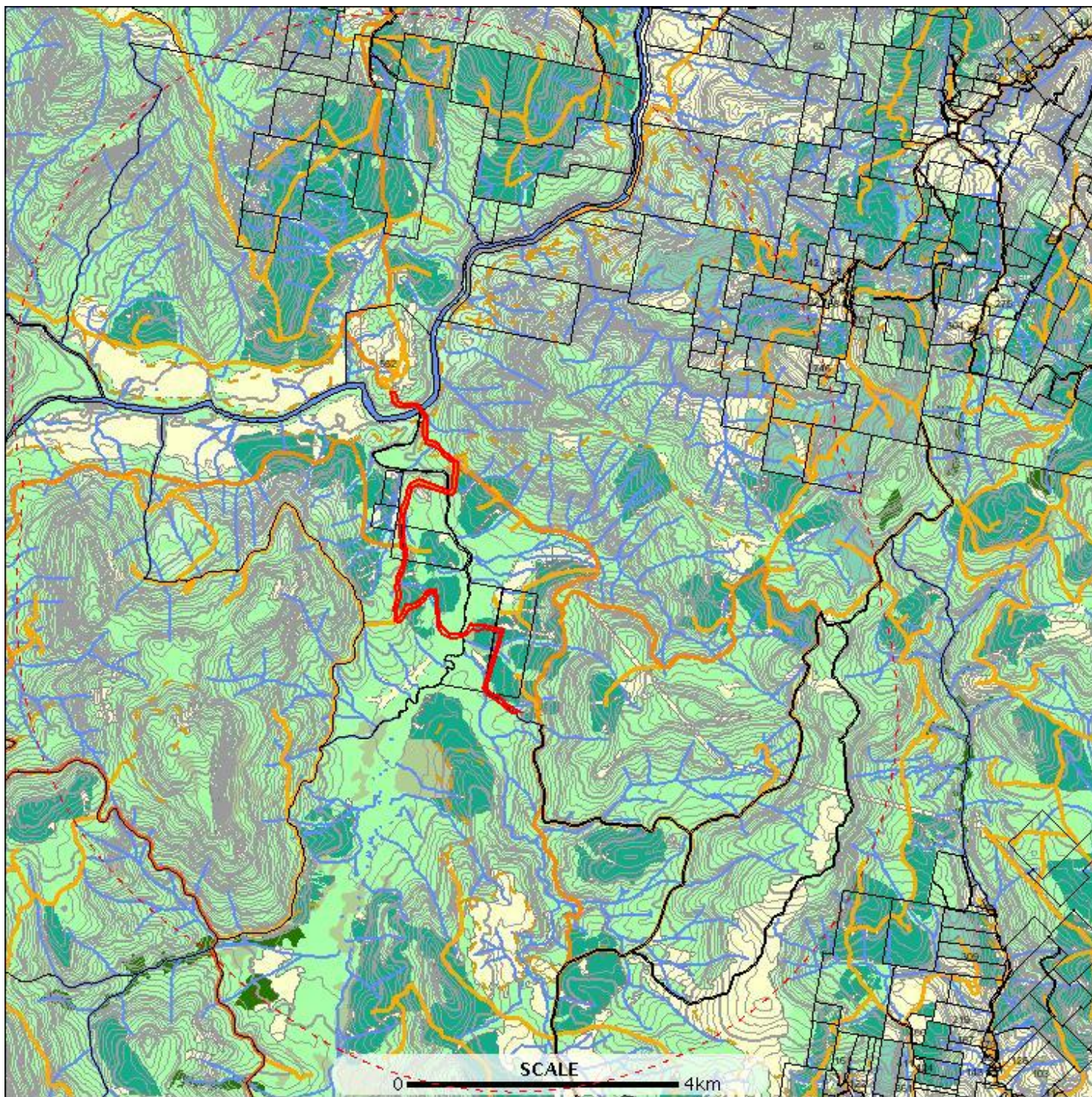
## Raptor nests and sightings within 500 metres

\*\*\* No Raptor nests or sightings found within 500 metres. \*\*\*

## Raptor nests and sightings within 5000 metres

E: 479742  
N: 5238130

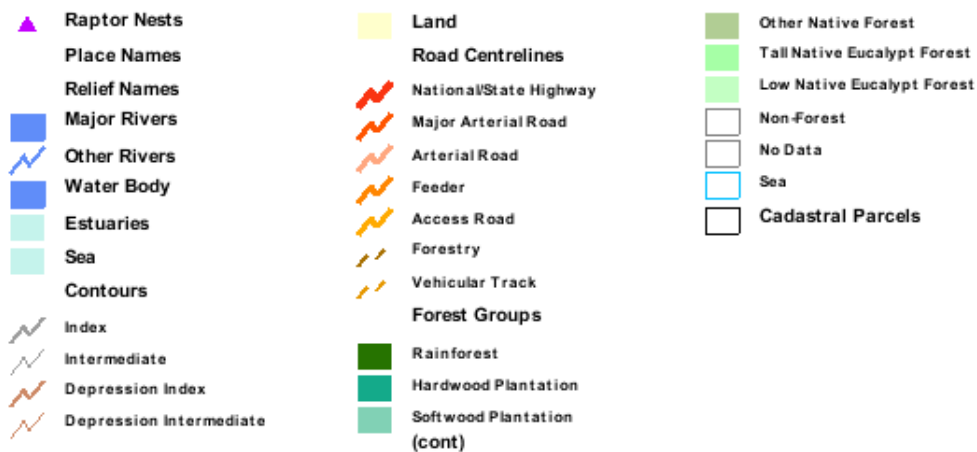
E: 491647  
N: 5238130



E: 479742  
N: 5223682

E: 491647  
N: 5223682

# Raptor nests and sightings within 5000 metres



## Raptor nests and sightings within 5000 metres

### Verified Records

Location id	Location foreign id	Observation id	Observer	Obs date	Obs type	Position (gda94)	Season	Nest productivity	Nest occupancy
		949292	Kerri Spicer (6930)	23-Jul-2004	nest	Point (490975,5226934) +/- 0m.			
		1048618	David Mannes (17849)	06-Oct-2008	nest	Point (481180,5230580) +/- 0m.			

### Unverified Records