

Natural Values Atlas Report

Authoritative, comprehensive information on Tasmania's natural values.

Report number: 44417

Reference: PeakRivuletRoad

Requested For: GSLM

Timestamp: 02:55:51 PM Tuesday 14 February 2012

Raptors: buffers 500m and 5000m

Threatened Flora: buffers 500m and 5000m

Threatened Fauna: buffers 500m and 5000m

Conservation Significance Flora: Not requested

Conservation Significance Fauna: Not requested

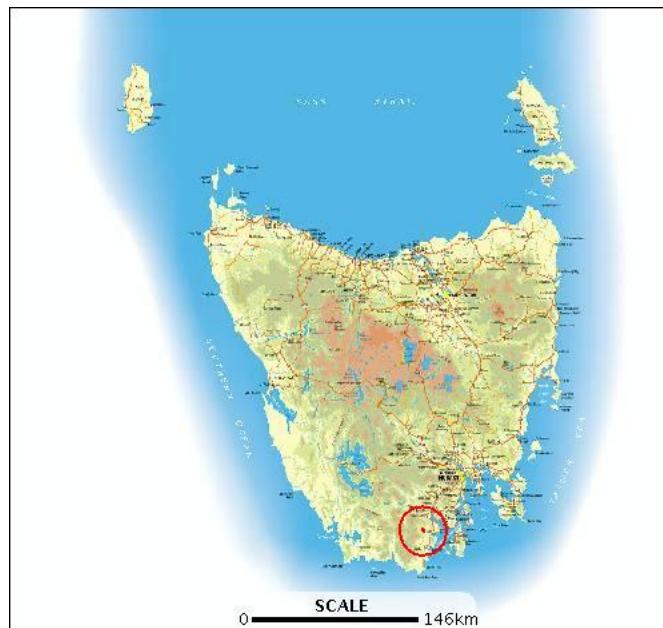
Weeds: buffers 500m and 5000m

TasVeg: buffer 1000m

Threatened Communities: buffer 1000m

Geoconservation: buffer 1000m

Tasmanian Reserve Estate: buffer 1000m



The centroid for this query GDA94 491324,5205564 falls within:

1:25000 Map: 4820 RAMINEA

Property: 2534612 HUON HIGHWAY, DOVER TAS
7117

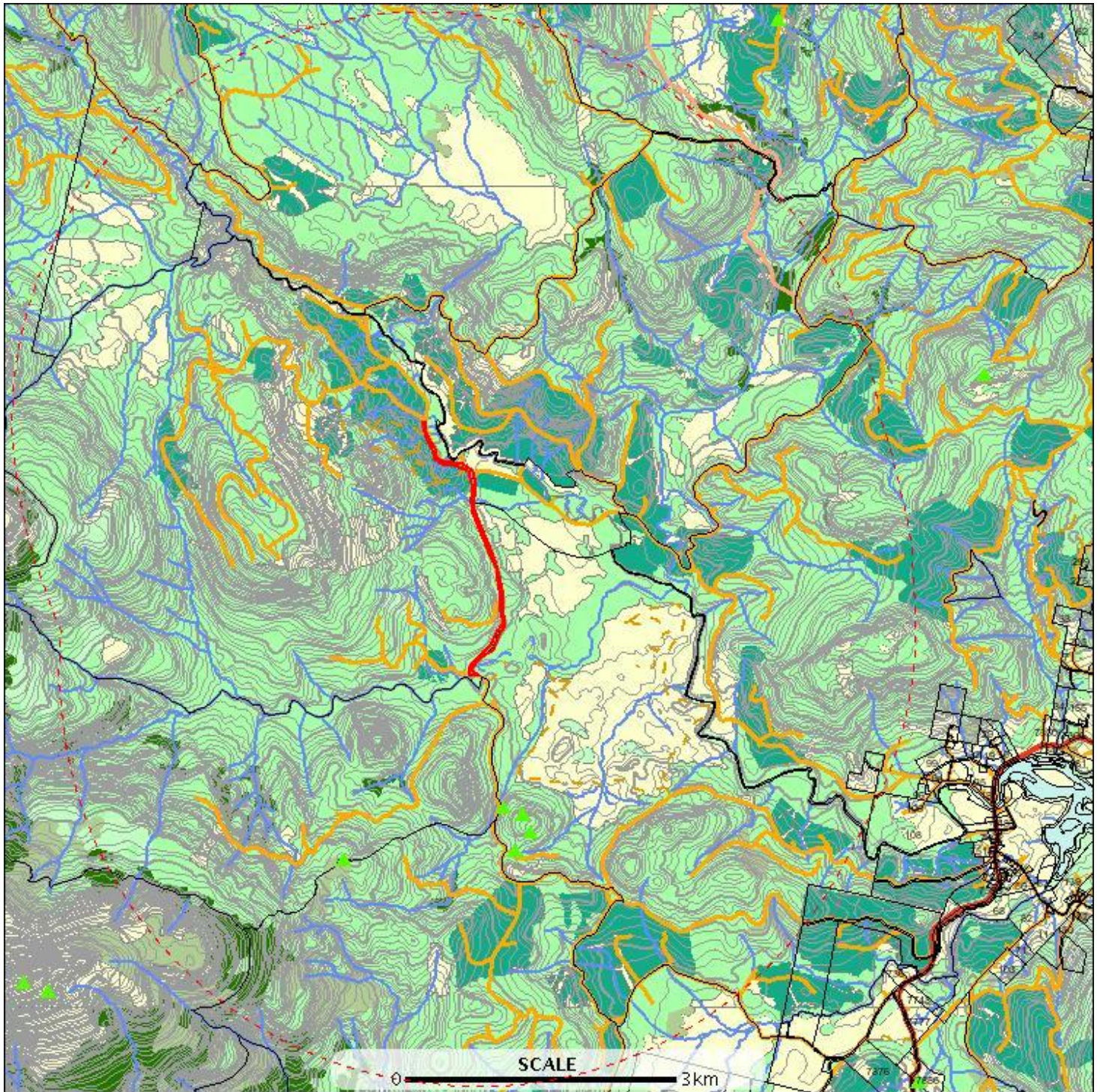
Threatened flora within 500 metres

*** No threatened flora found within 500 metres. ***

Threatened flora within 5000 metres

E: 485572
N: 5212222

E: 496775
N: 5212222



E: 485572
N: 5198947

E: 496775
N: 5198947

Threatened flora within 5000 metres



Threatened flora within 5000 metres

Verified Records

Id	Species	Common name	Ss	Ns	Observers	Date	Obs type	Position (gda94)
1240095	Cyathodes platystoma	tall cheeseberry	r		Karen Richards (3464), Chris Spencer (6910)	16-Sep-2011	sight	Point (491795,5201889) +/- 10m.
1240096	Cyathodes platystoma	tall cheeseberry	r		Karen Richards (3464), Chris Spencer (6910)	16-Sep-2011	sight	Point (491982,5202109) +/- 10m.
1240097	Cyathodes platystoma	tall cheeseberry	r		Karen Richards (3464), Chris Spencer (6910)	16-Sep-2011	sight	Point (491888,5202334) +/- 10m.
1240098	Cyathodes platystoma	tall cheeseberry	r		Karen Richards (3464), Chris Spencer (6910)	16-Sep-2011	sight	Point (491654,5202409) +/- 10m.
227682	Persoonia muelleri subsp. angustifolia	narrowleaf geebung	r		S.J. Jarman (5581)	30-Mar-1980	sight	Point (489712,5201783) +/- 2000m.

Unverified Records

For more information about threatened species, please contact the Manager, Threatened Species Section.

Telephone: (03) 6233 8759

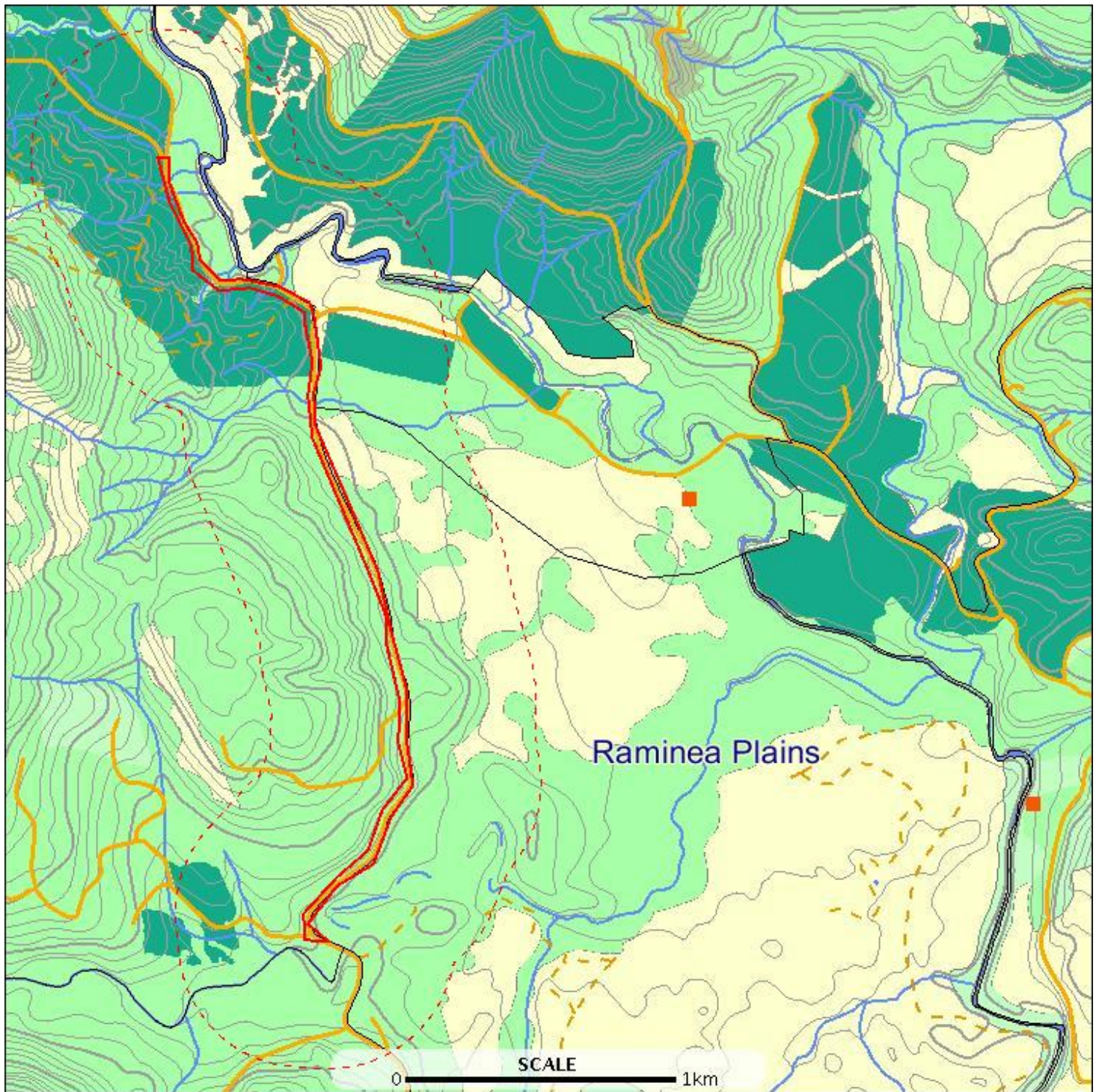
Email: ThreatenedSpecies.Enquiries@dpipwe.tas.gov.au

Address: GPO Box 44, Hobart, Tasmania, Australia, 7000

Threatened fauna within 500 metres

E: 490071
N: 5207722

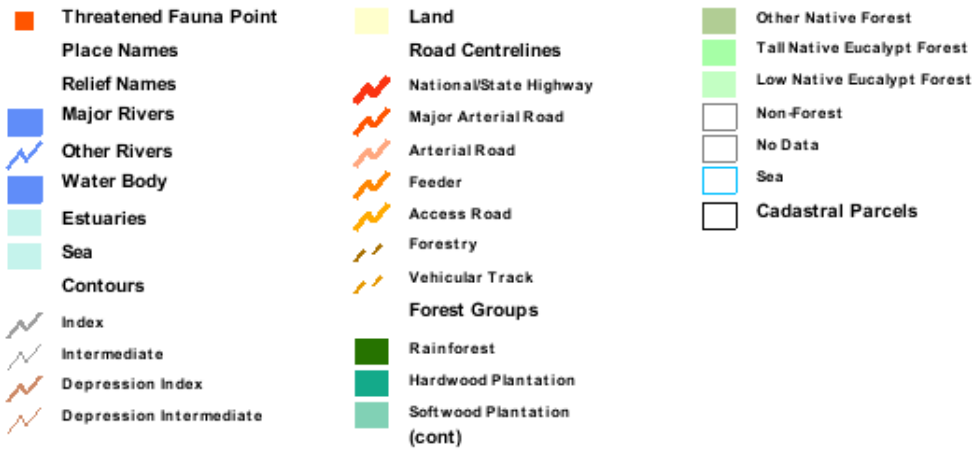
E: 492276
N: 5207722



E: 490071
N: 5203447

E: 492276
N: 5203447

Threatened fauna within 500 metres



Threatened fauna within 500 metres

Threatened fauna within 500 metres (based on Habitat Mapping)

Species	Common name	Ss	Ns	Potential	Known	Core
Lissotes menalcas	mt. mangana stag beetle	v		1	1	0
Aquila audax	wedge-tailed eagle	pe	PEN	1	0	0
Perameles gunnii	eastern barred bandicoot		VU	1	0	0
Lathamus discolor	swift parrot	e	EN	1	1	1
Tyto novaehollandiae	masked owl	pe	PVU	1	0	1
Haliaeetus leucogaster	white-bellied sea-eagle	v		1	0	0
Accipiter novaehollandiae	grey goshawk	e		1	0	1

For more information about threatened species, please contact the Manager, Threatened Species Section.

Telephone: (03) 6233 8759

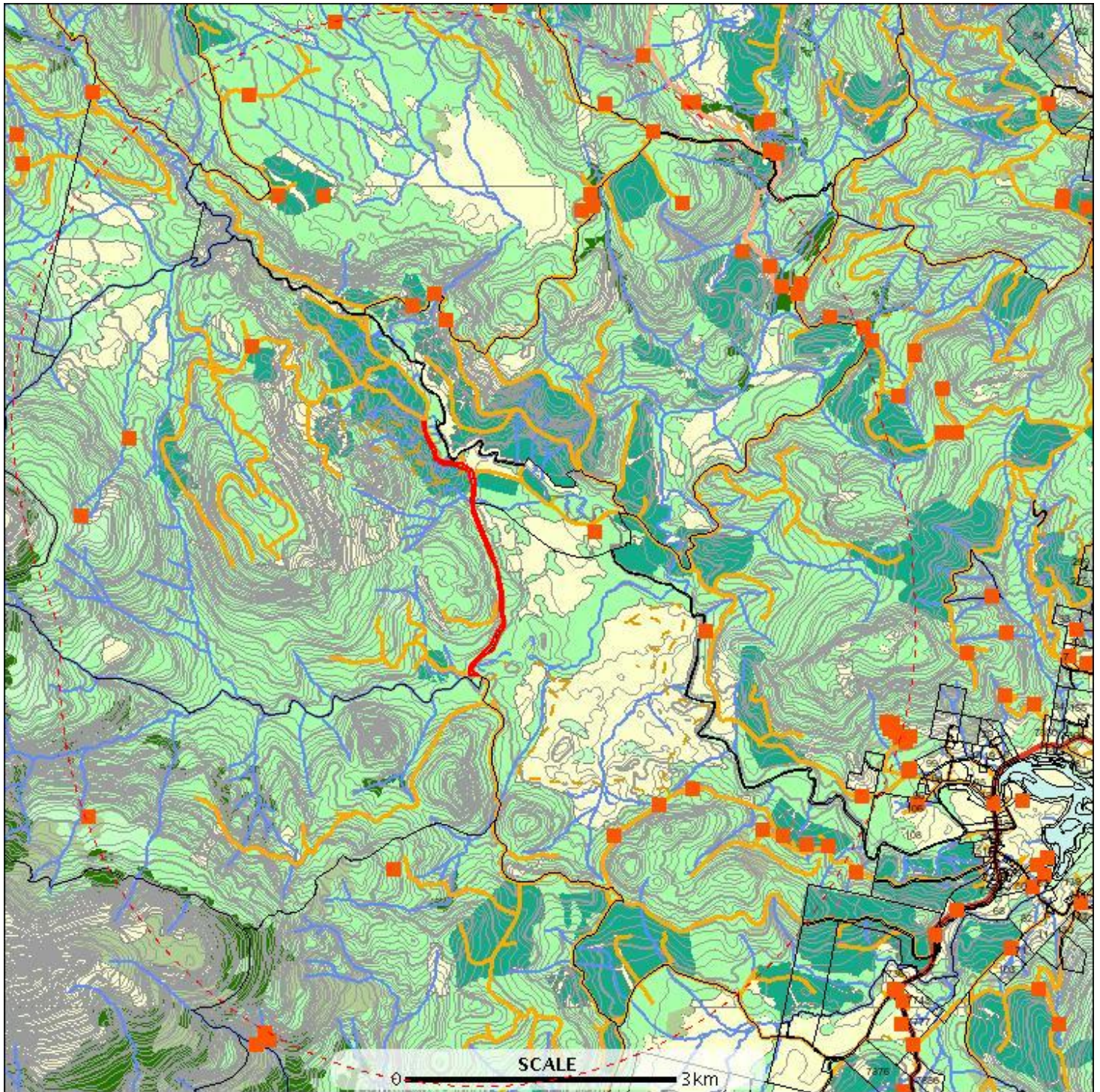
Email: ThreatenedSpecies.Enquiries@dpipwe.tas.gov.au

Address: GPO Box 44, Hobart, Tasmania, Australia, 7000

Threatened fauna within 5000 metres

E: 485572
N: 5212222

E: 496775
N: 5212222



E: 485572
N: 5198947

E: 496775
N: 5198947

Threatened fauna within 5000 metres



Threatened fauna within 5000 metres

Verified Records

Id	Species	Common name	Ss	Ns	Observers	Date	Obs type	Position (gda94)
1023661	Lathamus discolor	swift parrot	e	EN	Matthew Webb (7125)	03-Nov-2007	sight	Point (495635,5208395) +/- 200m.
1023619	Lathamus discolor	swift parrot	e	EN	Matthew Webb (7125)	15-Dec-2007	nest	Point (495040,5208768) +/- 200m.
1023664	Lathamus discolor	swift parrot	e	EN	Matthew Webb (7125)	01-Nov-2007	sight	Point (493005,5202089) +/- 200m.
1023608	Lathamus discolor	swift parrot	e	EN	Matthew Webb (7125)	01-Nov-2007	nest	Point (493554,5202468) +/- 200m.
1023618	Lathamus discolor	swift parrot	e	EN	Matthew Webb (7125)	08-Dec-2007	nest	Point (493957,5202669) +/- 200m.
1023605	Lathamus discolor	swift parrot	e	EN	Matthew Webb (7125)	03-Nov-2007	nest	Point (492745,5209751) +/- 200m.
1023643	Lathamus discolor	swift parrot	e	EN	Matthew Webb (7125)	02-Dec-2007	sight	Point (492745,5209751) +/- 200m.
1023711	Lathamus discolor	swift parrot	e	EN	Matthew Webb (7125)	02-Dec-2007	sight	Point (493477,5210656) +/- 200m.
1023606	Lathamus discolor	swift parrot	e	EN	Matthew Webb (7125)	02-Nov-2007	nest	Point (493829,5209792) +/- 200m.
1023713	Lathamus discolor	swift parrot	e	EN	Matthew Webb (7125)	02-Dec-2007	sight	Point (493829,5209792) +/- 200m.
1216957	Lathamus discolor	swift parrot	e	EN	Peter G Brown (6022)	1989	sight	Point (492900,5211000) +/- 100m.
1023662	Lathamus discolor	swift parrot	e	EN	Matthew Webb (7125)	02-Nov-2007	sight	Point (494563,5209209) +/- 200m.
1023768	Lathamus discolor	swift parrot	e	EN	Matthew Webb (7125)	20-Nov-2007	sight	Point (494893,5209031) +/- 200m.
1023660	Lathamus discolor	swift parrot	e	EN	Matthew Webb (7125)	03-Nov-2007	sight	Point (495274,5208812) +/- 200m.
1076182	Lissotes menalcas	mt. mangana stag beetle	v		Colin McCoull (5822)	15-Dec-2006	sight	Point (496481,5203304) +/- 100m.
1076185	Lissotes menalcas	mt. mangana stag beetle	v		Colin McCoull (5822)	15-Dec-2006	sight	Point (496367,5203395) +/- 100m.
1076186	Lissotes menalcas	mt. mangana stag beetle	v		Colin McCoull (5822)	15-Dec-2006	sight	Point (496315,5203484) +/- 100m.
1076124	Lissotes menalcas	mt. mangana stag beetle	v		Colin McCoull (5822)	04-Sep-2006	sight	Point (495605,5201973) +/- 100m.
1076123	Lissotes menalcas	mt. mangana stag beetle	v		Colin McCoull (5822)	04-Sep-2006	sight	Point (495353,5201991) +/- 100m.
1076122	Lissotes menalcas	mt. mangana stag beetle	v		Colin McCoull (5822)	04-Sep-2006	sight	Point (495055,5202090) +/- 100m.
1076184	Lissotes menalcas	mt. mangana stag beetle	v		Colin McCoull (5822)	15-Dec-2006	sight	Point (496423,5203355) +/- 100m.
1076088	Lissotes menalcas	mt. mangana stag beetle	v		Chris Spencer (6910)	16-Aug-2006	sight	Point (494812,5202170) +/- 100m.
1084165	Lissotes menalcas	mt. mangana stag beetle	v		C McCoull (2049)	Jul-2006	sight	Point (488594,5208051) +/- 100m.
1076141	Lissotes menalcas	mt. mangana stag beetle	v		Chris Spencer (6910)	23-Aug-2006	sight	Point (489469,5209878) +/- 100m.
1084145	Lissotes menalcas	mt. mangana stag beetle	v		C McCoull (2049)	Jul-2006	sight	Point (490963,5208359) +/- 100m.
1084144	Lissotes menalcas	mt. mangana stag beetle	v		C McCoull (2049)	Jul-2006	sight	Point (490545,5208540) +/- 100m.
1084143	Lissotes menalcas	mt. mangana stag beetle	v		C McCoull (2049)	Jul-2006	sight	Point (490822,5208678) +/- 100m.
890952	Lissotes menalcas	mt. mangana stag beetle	v		B Moore (3902)	27-Apr-1995?	sight	Point (486512,5205983) +/- 2000m.
1084164	Lissotes menalcas	mt. mangana stag beetle	v		C McCoull (2049)	Jul-2006	sight	Point (487093,5206927) +/- 100m.
1076183	Lissotes menalcas	mt. mangana stag beetle	v		Colin McCoull (5822)	15-Dec-2006	sight	Point (496479,5203289) +/- 100m.
1076121	Lissotes menalcas	mt. mangana stag beetle	v		Colin McCoull (5822)	04-Sep-2006	sight	Point (488564,5211111) +/- 100m.
749835	Perameles gunnii	eastern barred bandicoot		VU	- Unknown (21598)	25-Nov-1987?	sight	Point (492762,5205783) +/- 5000m.
744948	Perameles gunnii	eastern barred bandicoot		VU	- Unknown (21598)	19-Nov-1991?	sight	Point (494112,5204583) +/- 2500m.
895854	Perameles gunnii	eastern barred bandicoot		VU	R Hooper (2020)	06-Sep-1969?	sight	Point (486600,5202320) +/- 18500m.

Threatened fauna within 5000 metres

Id	Species	Common name	Ss	Ns	Observers	Date	Obs type	Position (gda94)
746123	Sarcophilus harrisii	tasmanian devil	e	EN	- Unknown (21598)	26-Nov-1992?	sight	Point (489612,5211983) +/- 2500m.
1204742	Sarcophilus harrisii	tasmanian devil	e	EN	George Ramm (22005)	26-Jan-2011	sight	Point (496026,5202577) +/- 200m.
753651	Sarcophilus harrisii	tasmanian devil	e	EN	- Unknown (21598)	26-Nov-1992?	sight	Point (488912,5209883) +/- 2500m.
1075629	Tyto novaehollandiae	masked owl	pe	PVU	Michael Kenneth Todd (10621)	08-Nov-2007	sight	Point (495240,5208687) +/- 10m.
949303	Tyto novaehollandiae	masked owl	pe	PVU	Erik Martin (9817)	25-Sep-2004	nest	Point (492608,5209707) +/- 0m.
1200924	Tyto novaehollandiae	masked owl	pe	PVU	Erik Martin (9817)	25-Jan-2005	sight	Point (492720,5209890) +/- 100m.

Unverified Records

Threatened fauna within 5000 metres (based on Habitat Mapping)

Species	Common name	Ss	Ns	Potential	Known	Core
Lissotes menalcas	mt. mangana stag beetle	v		2	2	0
Aquila audax	wedge-tailed eagle	pe	PEN	2	0	0
Perameles gunnii	eastern barred bandicoot		VU	2	0	0
Lathamus discolor	swift parrot	e	EN	2	2	2
Tyto novaehollandiae	masked owl	pe	PVU	2	0	2
Litoria raniformis	green and golden frog	v	VU	1	0	0
Haliaeetus leucogaster	white-bellied sea-eagle	v		2	0	0
Accipiter novaehollandiae	grey goshawk	e		2	0	2
Pardalotus quadragintus	forty-spotted pardalote	e	EN	1	0	0

For more information about threatened species, please contact the Manager, Threatened Species Section.

Telephone: (03) 6233 8759

Email: ThreatenedSpecies.Enquiries@dpipwe.tas.gov.au

Address: GPO Box 44, Hobart, Tasmania, Australia, 7000

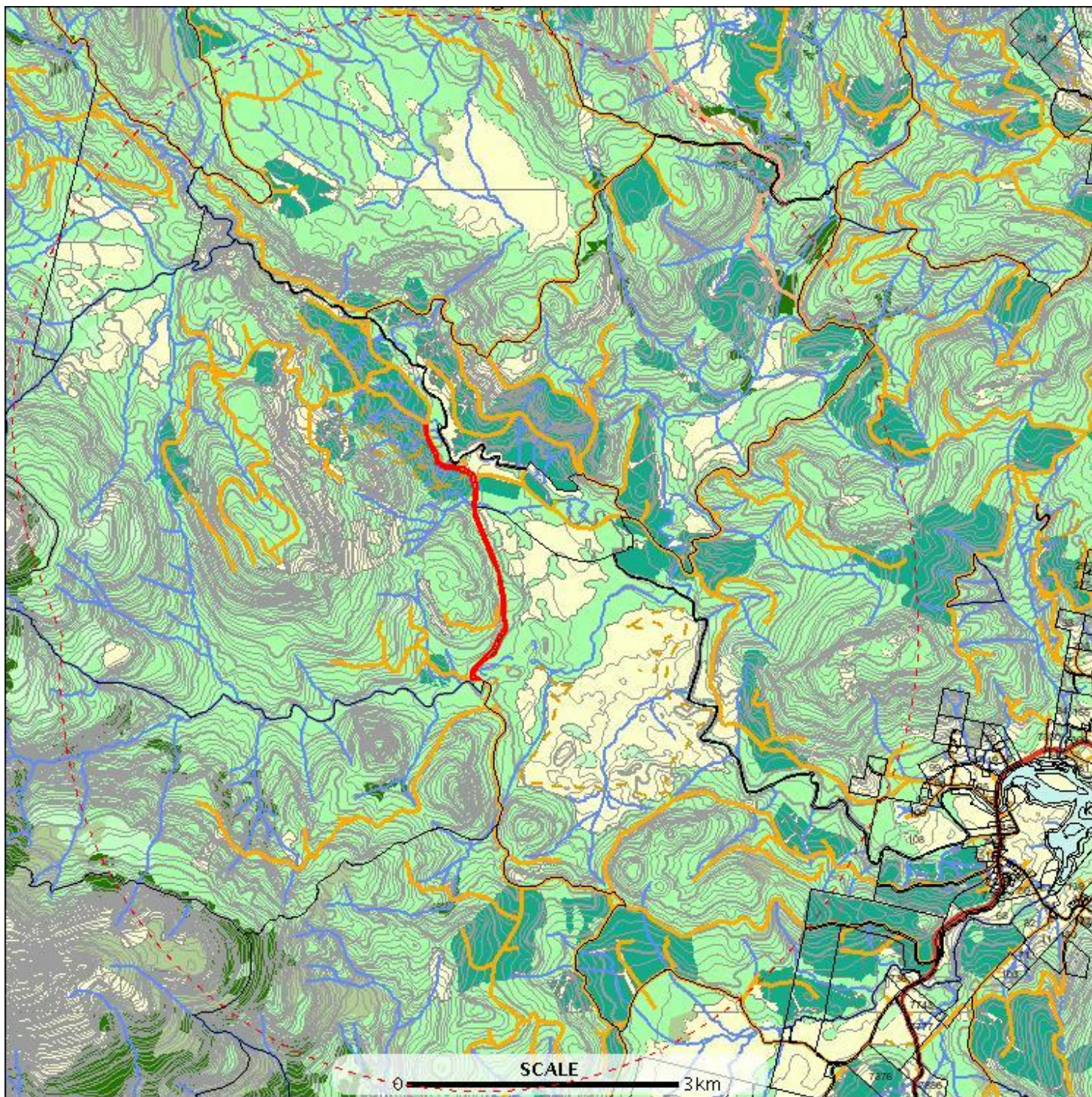
Raptor nests and sightings within 500 metres

*** No Raptor nests or sightings found within 500 metres. ***

Raptor nests and sightings within 5000 metres

E: 485572
N: 5212222

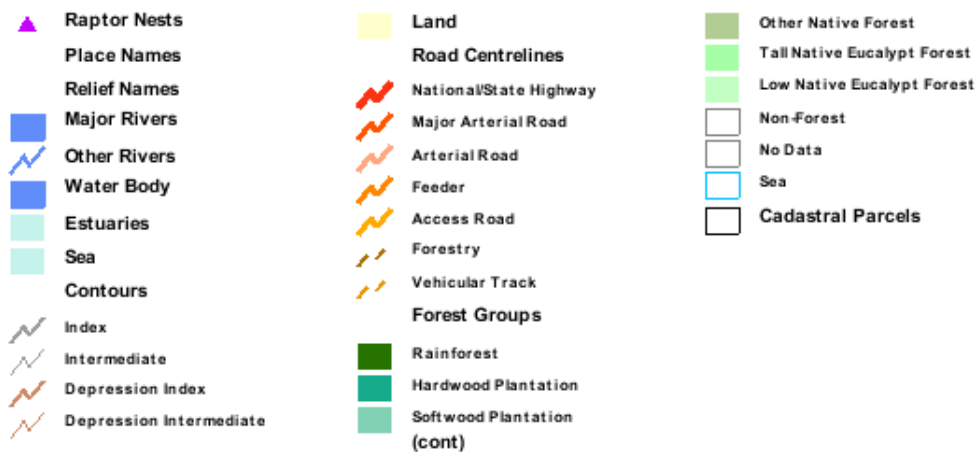
E: 496775
N: 5212222



E: 485572
N: 5198947

E: 496775
N: 5198947

Raptor nests and sightings within 5000 metres



Raptor nests and sightings within 5000 metres

Verified Records

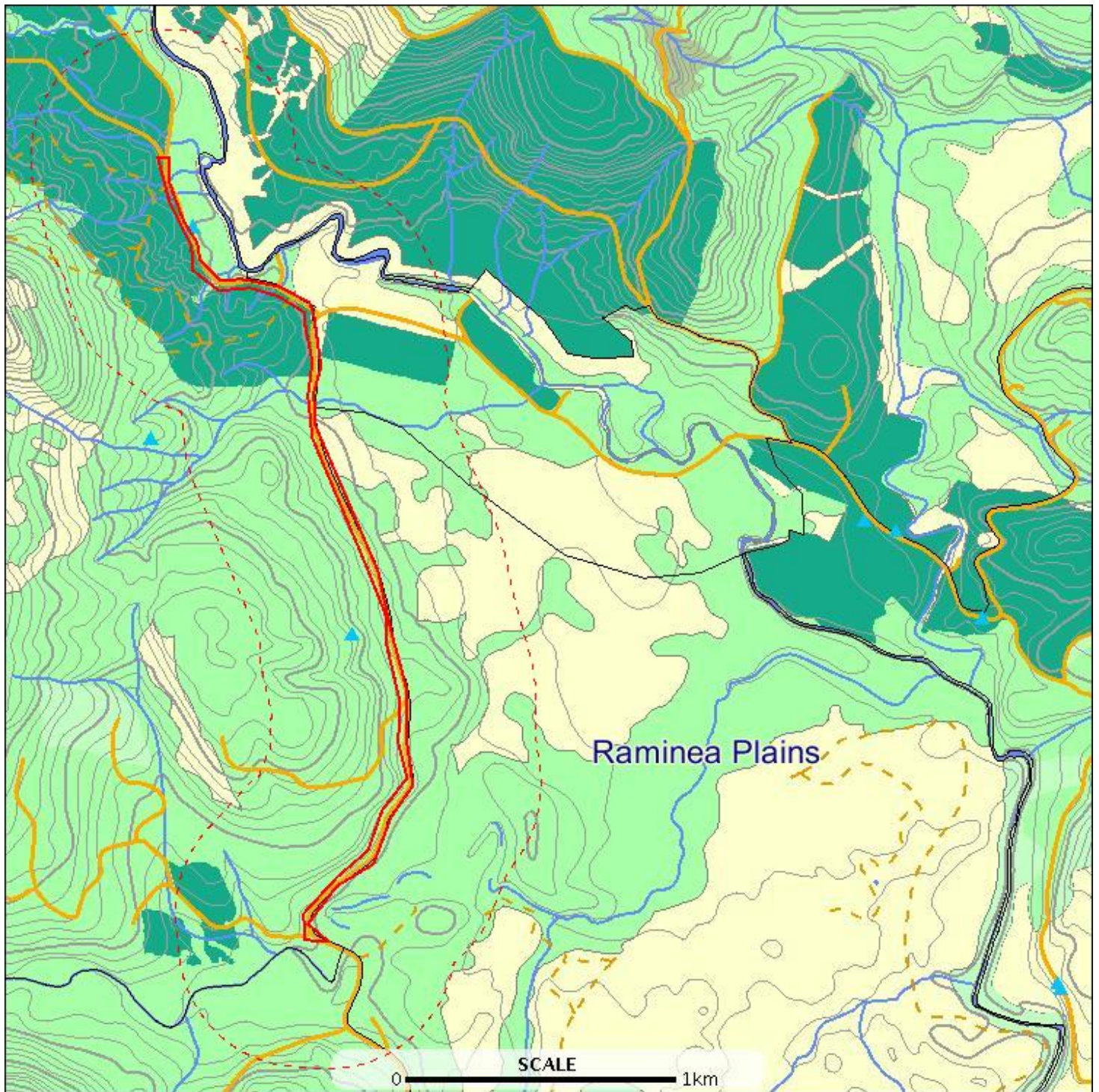
Location id	Location foreign id	Observation id	Observer	Obs date	Obs type	Position (gda94)	Season	Nest productivity	Nest occupancy
		980501	Trevor Seears (12530)	10-Oct-2007	nest	Point (496402,5203456) +/- 0m.			
		1023560	Watson Timber (18446)	02-Sep-2008	nest	Point (490318,5201681) +/- 0m.			

Unverified Records

Tas Management Act Weeds within 500 m

E: 490071
N: 5207722

E: 492276
N: 5207722



E: 490071
N: 5203447

E: 492276
N: 5203447

Tas Management Act Weeds within 500 m



Tas Management Act Weeds within 500 m

Verified Records

Id	Species	Common name	Observers	Date	Position (gda94)	Location	Obs state	Wma	Wons density	Data source
1002799	Erica lusitanica	spanish heath	Cassandra Strain (6044), Ken Borland (18227)	11-Sep-2007	Point (490811,5206843) +/- 10m.	Caseys Road	Present	Yes		
1181886	Erica lusitanica	spanish heath	M L Baker (9318)	28-Jun-2006	Point (491436,5205244) +/- 50m.		Present	Yes	7	

Unverified Records

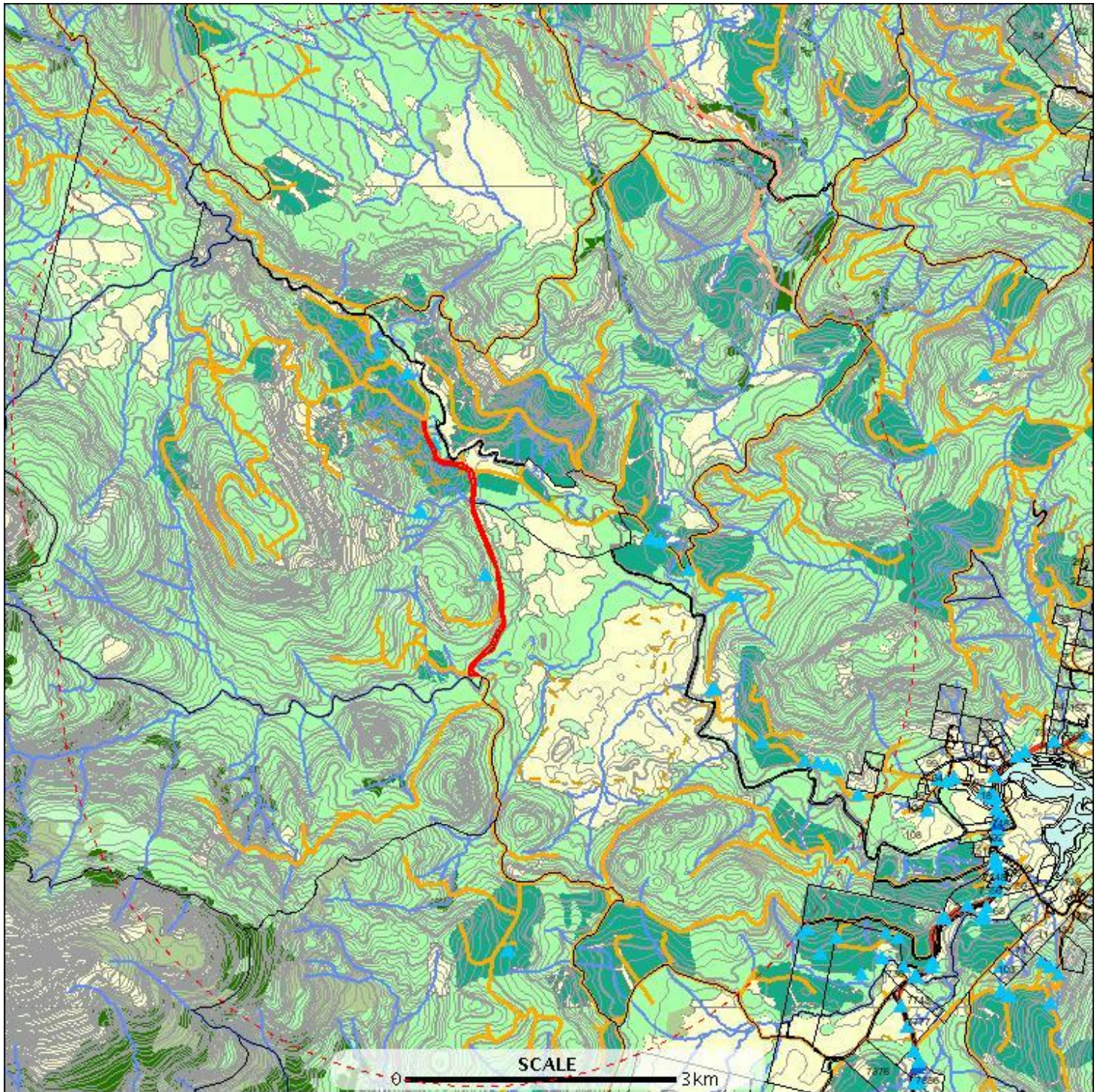
For more information about introduced weed species, please visit the following URL for contact details in your area.

<http://www.dpipwe.tas.gov.au/inter.nsf/WebPages/TPRY-52J8Z3?open>

Tas Management Act Weeds within 5000 m

E: 485572
N: 5212222








E: 496775
N: 5212222



E: 485572
N: 5198947

E: 496775
N: 5198947

Tas Management Act Weeds within 5000 m

	Weeds Watch List Point		Depression Index		Softwood Plantation
	Priority Weeds		Depression Intermediate		Other Native Forest
	Weeds Management Act		Land		Tall Native Eucalypt Forest
	Place Names		Road Centrelines		Low Native Eucalypt Forest
	Relief Names		National/State Highway		Non-Forest
	Major Rivers		Major Arterial Road		No Data
	Other Rivers		Arterial Road		Sea
	Water Body		Feeder		Cadastral Parcels
	Estuaries		Access Road		
	Sea		Forestry		
	Contours		Vehicular Track		
	Index		Forest Groups		
	Intermediate		Rainforest		
(cont)			Hardwood Plantation (cont)		

Tas Management Act Weeds within 5000 m

Verified Records

Id	Species	Common name	Observers	Date	Position (gda94)	Location	Obs state	Wma	Wons density	Data source
469535	Carduus nutans	nodding thistle	Louise Gilfedder (1499)	01-Jan-1600?	Point (491712,5200683) +/- 100m.		Present	Yes		
1002790	Erica lusitanica	spanish heath	Cassandra Strain (6044), Ken Borland (18227)	11-Sep-2007	Point (494798,5203216) +/- 10m.	Esperance Road	Present	Yes		
1002785	Erica lusitanica	spanish heath	Cassandra Strain (6044), Ken Borland (18227)	11-Sep-2007	Point (493571,5205649) +/- 10m.	Hopetown Road	Present	Yes		
1002801	Erica lusitanica	spanish heath	Cassandra Strain (6044), Ken Borland (18227)	11-Sep-2007	Point (490131,5207947) +/- 10m.	Caseys Road	Present	Yes		
1002789	Erica lusitanica	spanish heath	Cassandra Strain (6044), Ken Borland (18227)	11-Sep-2007	Point (494220,5203852) +/- 10m.	Esperance Road	Present	Yes		
1002786	Erica lusitanica	spanish heath	Cassandra Strain (6044), Ken Borland (18227)	11-Sep-2007	Point (493447,5205689) +/- 10m.	Hopetown Road	Present	Yes		
1002799	Erica lusitanica	spanish heath	Cassandra Strain (6044), Ken Borland (18227)	11-Sep-2007	Point (490811,5206843) +/- 10m.	Caseys Road	Present	Yes		
1170419	Erica lusitanica	spanish heath	- Unknown (21598)	28-Jun-2006	Point (490645,5206013) +/- 1m.		Present	Yes	7	Herbarium
1181886	Erica lusitanica	spanish heath	M L Baker (9318)	28-Jun-2006	Point (491436,5205244) +/- 50m.		Present	Yes	7	
1002787	Erica lusitanica	spanish heath	Cassandra Strain (6044), Ken Borland (18227)	11-Sep-2007	Point (493912,5205308) +/- 10m.	Esperance Road	Present	Yes		
1002788	Erica lusitanica	spanish heath	Cassandra Strain (6044), Ken Borland (18227)	11-Sep-2007	Point (494207,5203876) +/- 10m.	Esperance Road	Present	Yes		
1002800	Erica lusitanica	spanish heath	Cassandra Strain (6044), Ken Borland (18227)	11-Sep-2007	Point (490483,5207702) +/- 10m.	Caseys Road	Present	Yes		
1004671	Rubus fruticosus	blackberry	Cassandra Strain (6044), Ken Borland (18227)	11-Sep-2007	Point (494415,5204989) +/- 10m.	Esperance Road	Present	Yes		
1004676	Rubus fruticosus	blackberry	Cassandra Strain (6044), Ken Borland (18227)	11-Sep-2007	Point (495704,5202877) +/- 10m.	Esperance Road	Present	Yes		
1004674	Rubus fruticosus	blackberry	Cassandra Strain (6044), Ken Borland (18227)	11-Sep-2007	Point (495483,5202959) +/- 10m.	Esperance Road	Present	Yes		
1004672	Rubus fruticosus	blackberry	Cassandra Strain (6044), Ken Borland (18227)	11-Sep-2007	Point (494512,5204985) +/- 10m.	Esperance Road	Present	Yes		

Tas Management Act Weeds within 5000 m

Id	Species	Common name	Observers	Date	Position (gda94)	Location	Obs state	Wma	Wons density	Data source
1004673	Rubus fruticosus	blackberry	Cassandra Strain (6044), Ken Borland (18227)	11-Sep-2007	Point (495324,5202984) +/- 10m.	Esperance Road	Present	Yes		
1004677	Rubus fruticosus	blackberry	Cassandra Strain (6044), Ken Borland (18227)	11-Sep-2007	Point (495979,5202572) +/- 10m.	Esperance Road	Present	Yes		
1004675	Rubus fruticosus	blackberry	Cassandra Strain (6044), Ken Borland (18227)	11-Sep-2007	Point (495607,5202929) +/- 10m.	Esperance Road	Present	Yes		

Unverified Records

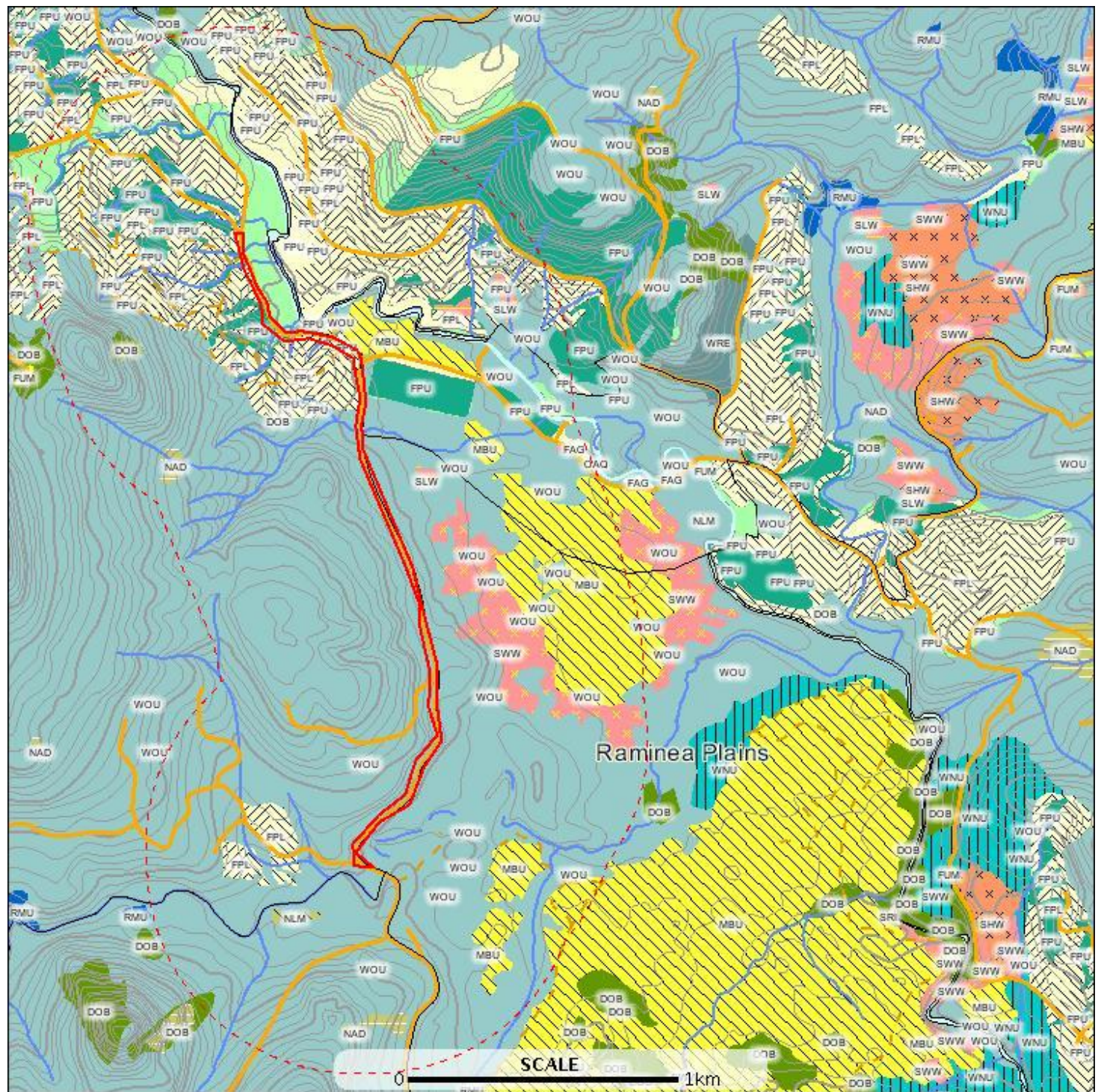
For more information about introduced weed species, please visit the following URL for contact details in your area.

<http://www.dpipwe.tas.gov.au/inter.nsf/WebPages/TPRY-52J8Z3?open>

TASVEG communities within 1000 metres

E: 489571
N: 5208222

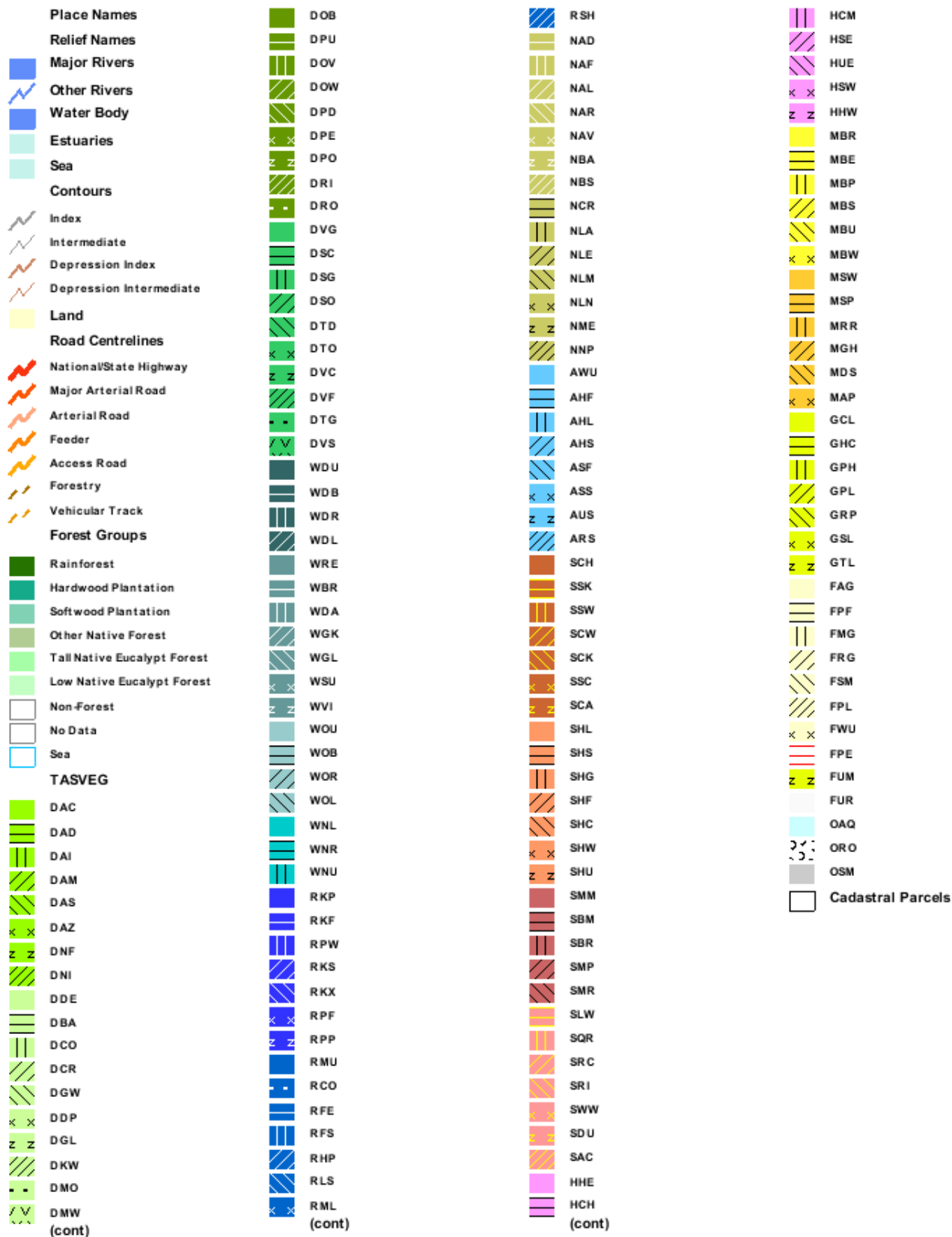
E: 492775
N: 5208222



E: 489571
N: 5202946

E: 492775
N: 5202946

TASVEG communities within 1000 metres



TASVEG communities within 1000 metres

Id	Code	Community	Emergent species
101571209	FPL	Plantations for silviculture	
101571248	FPL	Plantations for silviculture	
101396691	FPU	Unverified plantations for silviculture	
101396691	FPU	Unverified plantations for silviculture	
101395336	WOU	Eucalyptus obliqua wet forest (undifferentiated)	
101396691	FPU	Unverified plantations for silviculture	
101396691	FPU	Unverified plantations for silviculture	
101396691	FPU	Unverified plantations for silviculture	
101396691	FPU	Unverified plantations for silviculture	
101390997	FPU	Unverified plantations for silviculture	
101395295	WOU	Eucalyptus obliqua wet forest (undifferentiated)	
101395112	WOU	Eucalyptus obliqua wet forest (undifferentiated)	
101396693	FPU	Unverified plantations for silviculture	
101396693	FPU	Unverified plantations for silviculture	
101571188	FPL	Plantations for silviculture	
101571189	FPL	Plantations for silviculture	
101396679	NAD	Acacia dealbata forest	
101396702	SLW	Leptospermum scrub	
101396684	WOU	Eucalyptus obliqua wet forest (undifferentiated)	
101424577	WOU	Eucalyptus obliqua wet forest (undifferentiated)	
101424577	WOU	Eucalyptus obliqua wet forest (undifferentiated)	
101571197	FPL	Plantations for silviculture	
101571200	FPL	Plantations for silviculture	
101393988	DOB	Eucalyptus obliqua dry forest and woodland	
101395339	WOU	Eucalyptus obliqua wet forest (undifferentiated)	
101396403	WOU	Eucalyptus obliqua wet forest (undifferentiated)	
101396710	WOU	Eucalyptus obliqua wet forest (undifferentiated)	
101395338	WOU	Eucalyptus obliqua wet forest (undifferentiated)	
101396703	FPU	Unverified plantations for silviculture	
101397175	WOU	Eucalyptus obliqua wet forest (undifferentiated)	
101397195	SLW	Leptospermum scrub	
101396404	WOU	Eucalyptus obliqua wet forest (undifferentiated)	
101571226	FPL	Plantations for silviculture	
101396688	DOB	Eucalyptus obliqua dry forest and woodland	
101396678	NLM	Leptospermum lanigerum - Melaleuca squarrosa swamp forest	
101393594	SLW	Leptospermum scrub	
101571202	FPL	Plantations for silviculture	
101395335	MBU	Buttongrass moorland (undifferentiated)	Eucalyptus nitida
101390993	WOU	Eucalyptus obliqua wet forest (undifferentiated)	
101397177	FAG	Agricultural land	
101390995	FPU	Unverified plantations for silviculture	
101395334	MBU	Buttongrass moorland (undifferentiated)	Eucalyptus nitida
101396707	FPU	Unverified plantations for silviculture	
101392187	WOU	Eucalyptus obliqua wet forest (undifferentiated)	
101390994	WOU	Eucalyptus obliqua wet forest (undifferentiated)	
101396696	FPU	Unverified plantations for silviculture	
101395337	WOU	Eucalyptus obliqua wet forest (undifferentiated)	
101396696	FPU	Unverified plantations for silviculture	
101396696	FPU	Unverified plantations for silviculture	
101396696	FPU	Unverified plantations for silviculture	
101396696	FPU	Unverified plantations for silviculture	
101393276	FPU	Unverified plantations for silviculture	
101393276	FPU	Unverified plantations for silviculture	
101393276	FPU	Unverified plantations for silviculture	
101393276	FPU	Unverified plantations for silviculture	
101393276	FPU	Unverified plantations for silviculture	
101396695	FPU	Unverified plantations for silviculture	
101393276	FPU	Unverified plantations for silviculture	
101393276	FPU	Unverified plantations for silviculture	
101396697	FPU	Unverified plantations for silviculture	

TASVEG communities within 1000 metres

Id	Code	Community	Emergent species
101396697	FPU	Unverified plantations for silviculture	
101396697	FPU	Unverified plantations for silviculture	
101396697	FPU	Unverified plantations for silviculture	
101396705	FPU	Unverified plantations for silviculture	
101396705	FPU	Unverified plantations for silviculture	
101396705	FPU	Unverified plantations for silviculture	
101396705	FPU	Unverified plantations for silviculture	
101396705	FPU	Unverified plantations for silviculture	
101396699	WOU	Eucalyptus obliqua wet forest (undifferentiated)	
101396705	FPU	Unverified plantations for silviculture	
101396705	FPU	Unverified plantations for silviculture	
101396705	FPU	Unverified plantations for silviculture	
101396705	FPU	Unverified plantations for silviculture	
101396705	FPU	Unverified plantations for silviculture	
101396705	FPU	Unverified plantations for silviculture	
101396705	FPU	Unverified plantations for silviculture	
101396705	FPU	Unverified plantations for silviculture	
101395296	WOU	Eucalyptus obliqua wet forest (undifferentiated)	
101396691	FPU	Unverified plantations for silviculture	
101396705	FPU	Unverified plantations for silviculture	
101393276	FPU	Unverified plantations for silviculture	
101390997	FPU	Unverified plantations for silviculture	
101396693	FPU	Unverified plantations for silviculture	
101396705	FPU	Unverified plantations for silviculture	
101571240	FPL	Plantations for silviculture	
101424577	WOU	Eucalyptus obliqua wet forest (undifferentiated)	
101395340	MBU	Buttongrass moorland (undifferentiated)	
101393592	MBU	Buttongrass moorland (undifferentiated)	
101396691	FPU	Unverified plantations for silviculture	
101396691	FPU	Unverified plantations for silviculture	
101578352	FPL	Plantations for silviculture	
101396691	FPU	Unverified plantations for silviculture	
101396697	FPU	Unverified plantations for silviculture	
101393276	FPU	Unverified plantations for silviculture	
101571201	FPL	Plantations for silviculture	
101571244	FPL	Plantations for silviculture	
101397171	WOU	Eucalyptus obliqua wet forest (undifferentiated)	
101396705	FPU	Unverified plantations for silviculture	
101396705	FPU	Unverified plantations for silviculture	
101390996	SLW	Leptospermum scrub	
101396706	WOU	Eucalyptus obliqua wet forest (undifferentiated)	
101396690	FPU	Unverified plantations for silviculture	
101396406	FPU	Unverified plantations for silviculture	
101396406	FPU	Unverified plantations for silviculture	
101396406	FPU	Unverified plantations for silviculture	
101396406	FPU	Unverified plantations for silviculture	
101396701	WOU	Eucalyptus obliqua wet forest (undifferentiated)	
101396700	DOB	Eucalyptus obliqua dry forest and woodland	
101397174	SWW	Western wet scrub	
101396698	FPU	Unverified plantations for silviculture	
101393593	FPU	Unverified plantations for silviculture	
101396181	WOU	Eucalyptus obliqua wet forest (undifferentiated)	
101396709	SWW	Western wet scrub	
101395297	MBU	Buttongrass moorland (undifferentiated)	
101396708	MBU	Buttongrass moorland (undifferentiated)	
101396704	OAQ	Water, sea	
101571235	FPL	Plantations for silviculture	
101396689	NAD	Acacia dealbata forest	
101396680	WOU	Eucalyptus obliqua wet forest (undifferentiated)	
101393595	WOU	Eucalyptus obliqua wet forest (undifferentiated)	

TASVEG communities within 1000 metres

Id	Code	Community	Emergent species
101396405	WOU	Eucalyptus obliqua wet forest (undifferentiated)	
101397176	WOU	Eucalyptus obliqua wet forest (undifferentiated)	
101561933	WOU	Eucalyptus obliqua wet forest (undifferentiated)	

For more information about TASVEG maps, please contact the Coordinator, Tasmanian Vegetation Monitoring and Mapping Program.

Telephone: (03) 6233 4501

Email: TASVEG@dpipwe.tas.gov.au

Address: GPO Box 44, Hobart, Tasmania, Australia, 7000

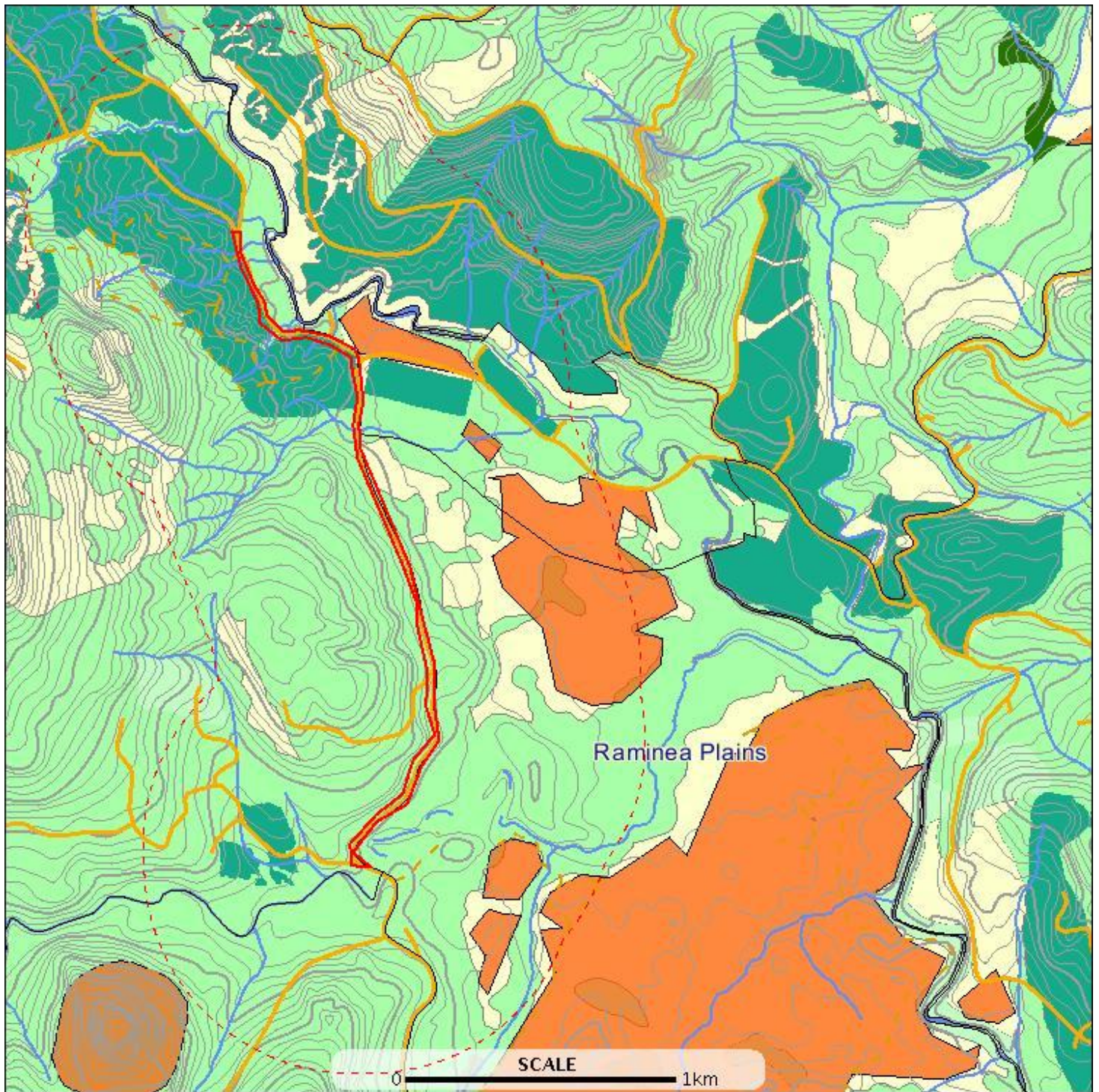
Threatened communities within 1000 metres

*** No threatened communities found within 1000 metres. ***

Geoconservation sites within 1000 metres

E: 489571
N: 5208222

E: 492775
N: 5208222



E: 489571
N: 5202946

E: 492775
N: 5202946

Geoconservation sites within 1000 metres



Geoconservation sites within 1000 metres

Id	Name	Significance	Geographical significance	Status
2527	Western Tasmania Blanket Bogs	Data not yet completed	Global	Listed

Note: Restricted sites are not displayed.

For more information about the Geoconservation Database, please visit the DPIPWE web site (www.dpipwe.tas.gov.au) or contact the DPIPWE Geoconservation Officer:

Telephone: (03) 6233 6455

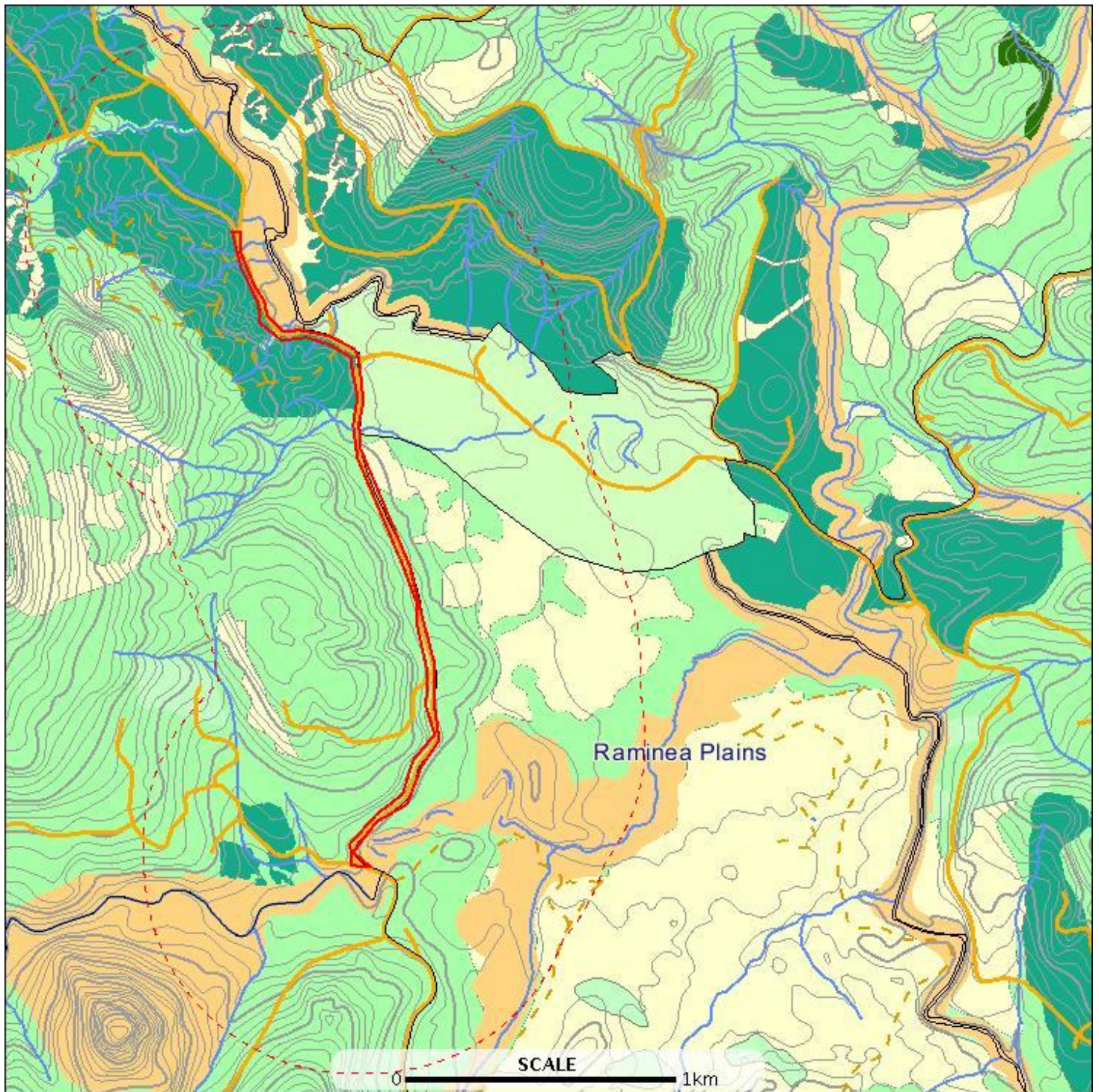
Email: Rolan.Eberhard@dpipwe.tas.gov.au

Address: GPO Box 44, Hobart, Tasmania, Australia, 7000

Reserves within 1000 metres

E: 489571
N: 5208222

E: 492775
N: 5208222



E: 489571
N: 5202946

E: 492775
N: 5202946

Reserves within 1000 metres



Reserves within 1000 metres

Name	Classification	Status
	Informal Reserve on State Forest or Forestry Tas managed land	Informal Reserve
Esperance River Forest Reserve	Forest Reserve	Other Formal Reserve
	Informal Reserve on State Forest or Forestry Tas managed land	Informal Reserve

For more information about the Tasmanian Reserve Estate, please contact the Land Conservation Branch DPIPWE.

Ph: (03) 6233 2744

Fax (03) 6223 8603

Address: GPO Box 44, Hobart, Tasmania, Australia, 7000