

# Natural Values Atlas Report

*Authoritative, comprehensive information on Tasmania's natural values.*

Report number: 44412

Reference: SouthCapeRoad2

Requested For: GSLM

Timestamp: 12:36:05 PM Tuesday 14 February 2012

Raptors: buffers 500m and 5000m

Threatened Flora: buffers 500m and 5000m

Threatened Fauna: buffers 500m and 5000m

Conservation Significance Flora: Not requested

Conservation Significance Fauna: Not requested

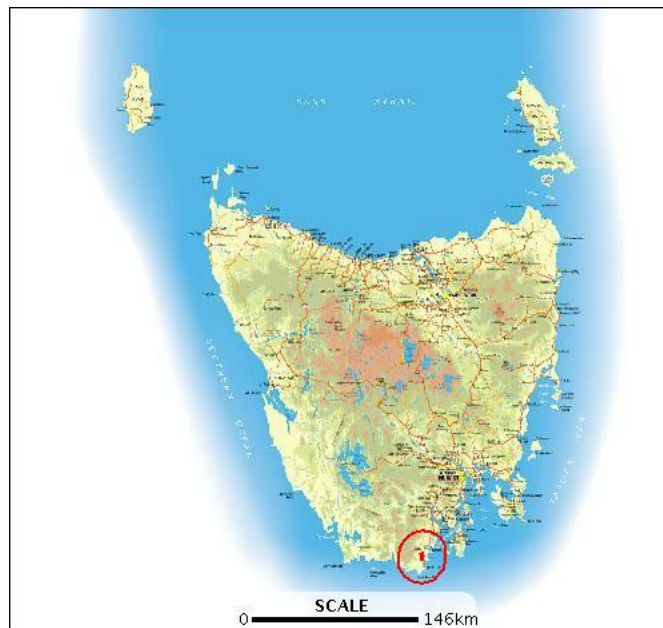
Weeds: buffers 500m and 5000m

TasVeg: buffer 1000m

Threatened Communities: buffer 1000m

Geoconservation: buffer 1000m

Tasmanian Reserve Estate: buffer 1000m



The centroid for this query GDA94 490405,5182460 falls within:

1:25000 Map: 4818 LEPRENA

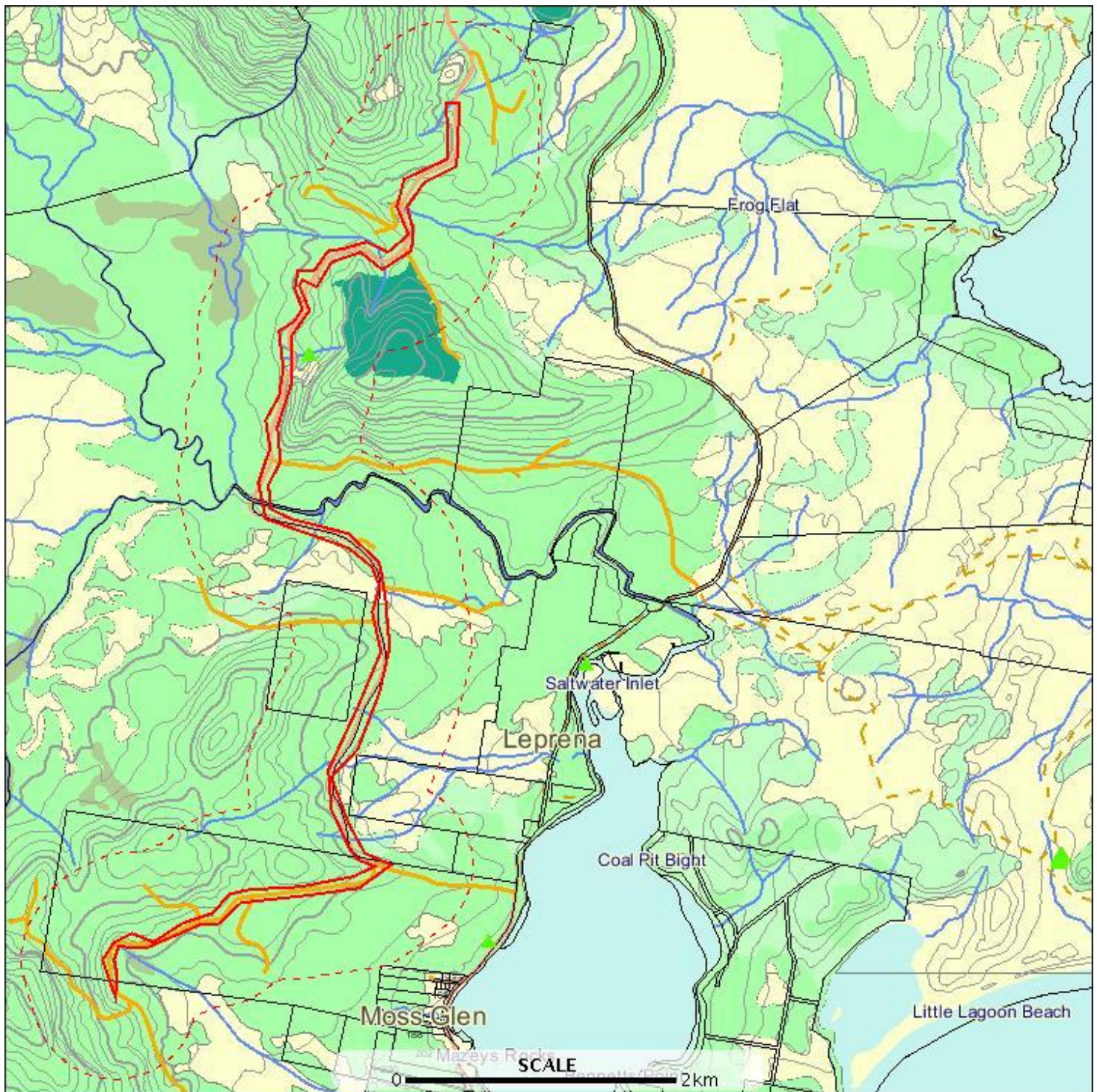
1:25000 Map: 4818 LEPRENA

Property: 2534807 COCKLE CREEK ROAD,  
RECHERCHE TAS 7109

## Threatened flora within 500 metres

E: 488442  
N: 5185933

E: 491830  
N: 5185933

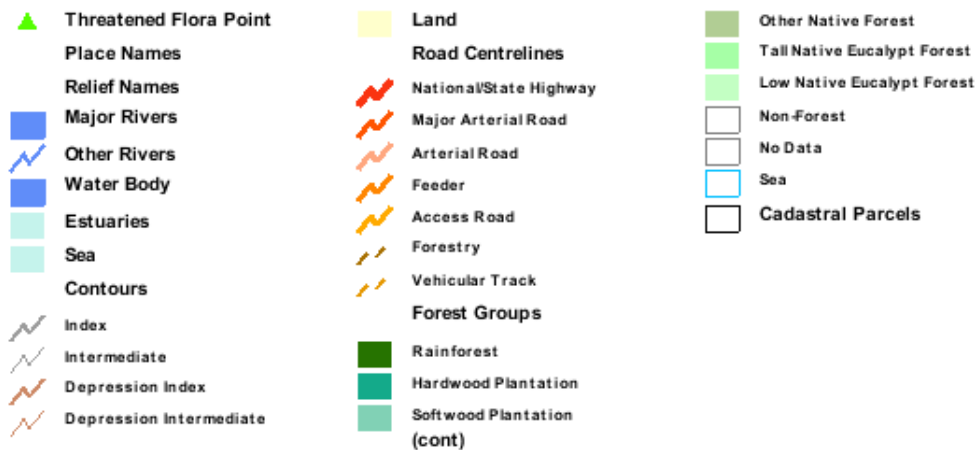


E: 488442  
N: 5179250

E: 491830  
N: 5179250



## Threatened flora within 500 metres



## Threatened flora within 500 metres

### Verified Records

Id	Species	Common name	Ss	Ns	Observers	Date	Obs type	Position (gda94)
226900	Deyeuxia densa	heath bentgrass	r		- Unknown (21598)	08-Jan-1967	sight	Point (490312,5183783) +/- 1500m.

### Unverified Records

For more information about threatened species, please contact the Manager, Threatened Species Section.

Telephone: (03) 6233 8759

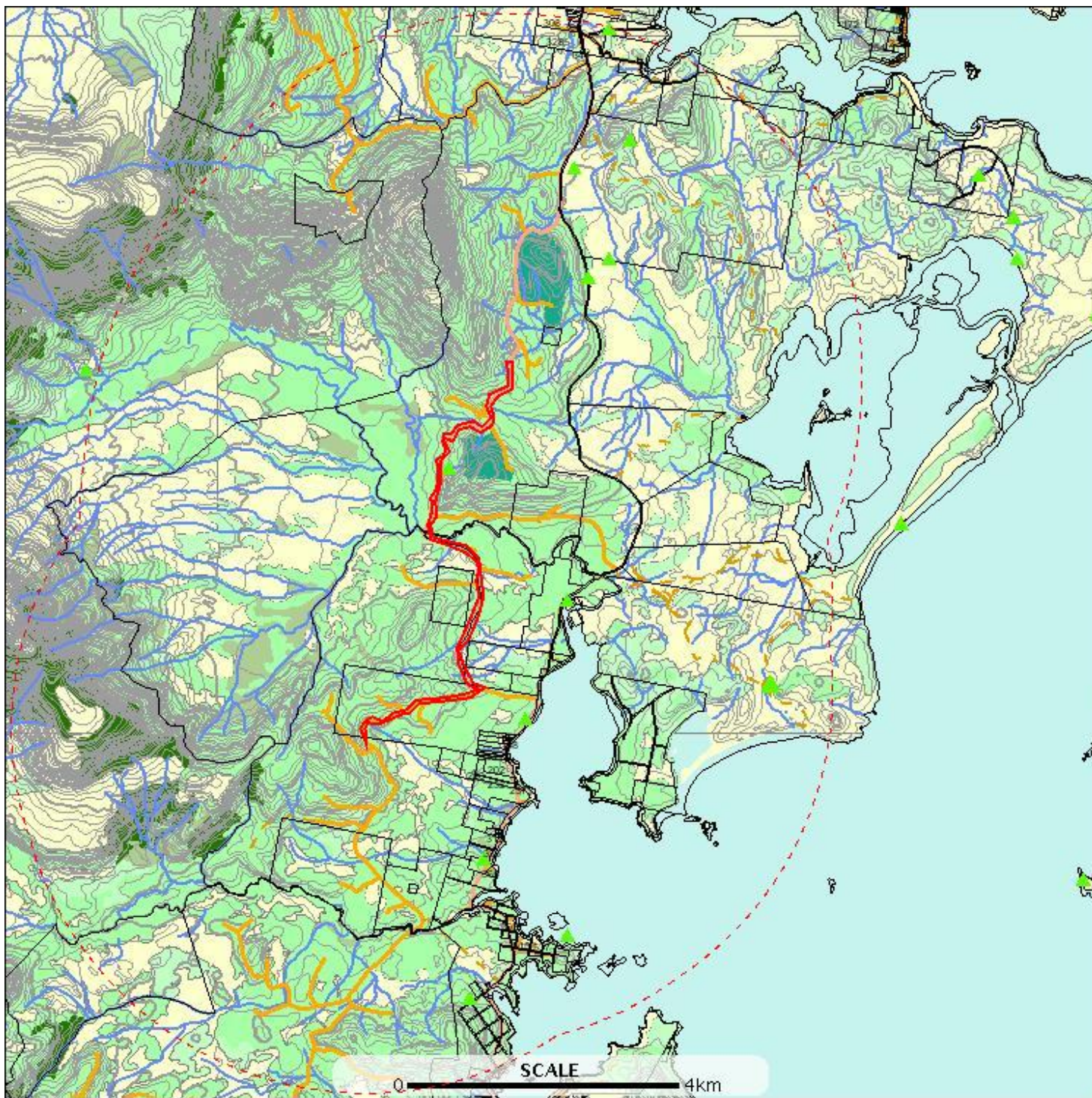
Email: [ThreatenedSpecies.Enquiries@dpipwe.tas.gov.au](mailto:ThreatenedSpecies.Enquiries@dpipwe.tas.gov.au)

Address: GPO Box 44, Hobart, Tasmania, Australia, 7000

## Threatened flora within 5000 metres

E: 483941  
N: 5190433

E: 496329  
N: 5190433

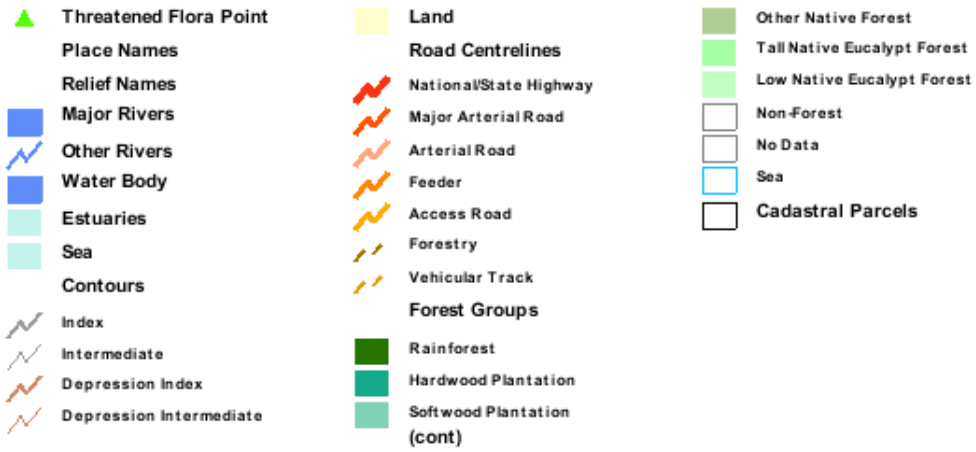


E: 483941  
N: 5174750

E: 496329  
N: 5174750



## Threatened flora within 5000 metres



# Threatened flora within 5000 metres

## Verified Records

Id	Species	Common name	Ss	Ns	Observers	Date	Obs type	Position (gda94)
226944	Carex longibrachiata	drooping sedge	r		P. Collier (5300)	01-Nov-1986	sight	Point (492012,5181883) +/- 100m.
563244	Corunastylis morrisii	bearded midge-orchid	e		M Wall (1612)	08-Feb-1979?	sight	Point (492912,5188483) +/- 100m.
226947	Corunastylis morrisii	bearded midge-orchid	e		Hans and Annie Wapstra (1091)	30-Jan-1993	sight	Point (492112,5188083) +/- 100m.
955210	Corunastylis morrisii	bearded midge-orchid	e		H Wapstra (1062), Annie Wapstra (9224)	30-Jan-1993	sight	Point (492112,5188083) +/- 100m.
227729	Corunastylis morrisii	bearded midge-orchid	e		David Ziegeler (7381)	21-Feb-1992	sight	Point (492612,5186783) +/- 100m.
227705	Deyeuxia densa	heath bentgrass	r		- Unknown (21598)	07-Jan-1967	sight	Point (491412,5180183) +/- 3000m.
226900	Deyeuxia densa	heath bentgrass	r		- Unknown (21598)	08-Jan-1967	sight	Point (490312,5183783) +/- 1500m.
227704	Deyeuxia densa	heath bentgrass	r		D.I. Morris (4111)	26-Jan-1981	sight	Point (491412,5180183) +/- 200m.
944954	Deyeuxia minor	small bentgrass	r		Denis IMorris (6606)	14-Jan-1981	sight	Point (491412,5180183) +/- 100m.
944951	Deyeuxia minor	small bentgrass	r		Denis IMorris (6606)	26-Jan-1981	sight	Point (491412,5180183) +/- 100m.
944949	Deyeuxia minor	small bentgrass	r		Denis IMorris (6606)	26-Jan-1981	sight	Point (491412,5180183) +/- 100m.
926073	Euphrasia gibbsiae subsp. psilantherea	swamp eyebright	e	CR	Wendy Potts (2507)	09-Feb-2002	sight	Point (494922,5180687) +/- 20m.
926072	Euphrasia gibbsiae subsp. psilantherea	swamp eyebright	e	CR	Wendy Potts (2507)	09-Feb-2002	sight	Point (494921,5180706) +/- 20m.
926074	Euphrasia gibbsiae subsp. psilantherea	swamp eyebright	e	CR	Wendy Potts (2507)	09-Feb-2002	sight	Point (494923,5180710) +/- 20m.
926075	Euphrasia gibbsiae subsp. psilantherea	swamp eyebright	e	CR	Wendy Potts (2507)	09-Feb-2002	sight	Point (494924,5180707) +/- 20m.
926076	Euphrasia gibbsiae subsp. psilantherea	swamp eyebright	e	CR	Wendy Potts (2507)	09-Feb-2002	sight	Point (494924,5180687) +/- 20m.
925552	Euphrasia gibbsiae subsp. psilantherea	swamp eyebright	e	CR	Mick Ilowski (1677)	20-Sep-2004	sight	Point (494926,5180704) +/- 20m.
344879	Euphrasia gibbsiae subsp. psilantherea	swamp eyebright	e	CR	Wendy Potts (2507)	05-Oct-1997	sight	Point (494927,5180698) +/- 30m.
342246	Euphrasia gibbsiae subsp. psilantherea	swamp eyebright	e	CR	Wendy Potts (2507)	09-Feb-2002	sight	Point (494927,5180698) +/- 30m.
345013	Euphrasia gibbsiae subsp. psilantherea	swamp eyebright	e	CR	Wendy Potts (2507)	01-Apr-1999	sight	Point (494927,5180698) +/- 30m.
344990	Euphrasia gibbsiae subsp. psilantherea	swamp eyebright	e	CR	Wendy Potts (2507)	29-Sep-1998	sight	Point (494927,5180698) +/- 30m.
343848	Euphrasia gibbsiae subsp. psilantherea	swamp eyebright	e	CR	Wendy Potts (2507)	17-Apr-2000	sight	Point (494927,5180698) +/- 30m.
926078	Euphrasia gibbsiae subsp. psilantherea	swamp eyebright	e	CR	Wendy Potts (2507)	09-Feb-2002	sight	Point (494927,5180712) +/- 20m.
926079	Euphrasia gibbsiae subsp. psilantherea	swamp eyebright	e	CR	Wendy Potts (2507)	09-Feb-2002	sight	Point (494928,5180662) +/- 20m.
926081	Euphrasia gibbsiae subsp. psilantherea	swamp eyebright	e	CR	Wendy Potts (2507)	09-Feb-2002	sight	Point (494936,5180710) +/- 20m.
926082	Euphrasia gibbsiae subsp. psilantherea	swamp eyebright	e	CR	Wendy Potts (2507)	09-Feb-2002	sight	Point (494938,5180704) +/- 20m.
926083	Euphrasia gibbsiae subsp. psilantherea	swamp eyebright	e	CR	Wendy Potts (2507)	09-Feb-2002	sight	Point (494939,5180705) +/- 20m.
926084	Euphrasia gibbsiae subsp. psilantherea	swamp eyebright	e	CR	Wendy Potts (2507)	09-Feb-2002	sight	Point (494940,5180708) +/- 20m.
926055	Euphrasia gibbsiae subsp. psilantherea	swamp eyebright	e	CR	Wendy Potts (2507)	09-Feb-2002	sight	Point (494908,5180673) +/- 20m.
925547	Euphrasia gibbsiae subsp. psilantherea	swamp eyebright	e	CR	Mick Ilowski (1677)	20-Sep-2004	sight	Point (494910,5180682) +/- 20m.
926056	Euphrasia gibbsiae subsp. psilantherea	swamp eyebright	e	CR	Wendy Potts (2507)	09-Feb-2002	sight	Point (494911,5180675) +/- 20m.
227753	Euphrasia gibbsiae subsp. psilantherea	swamp eyebright	e	CR	P. Collier (5300)	12-Oct-1985	sight	Point (494912,5180683) +/- 100m.
926059	Euphrasia gibbsiae subsp. psilantherea	swamp eyebright	e	CR	Wendy Potts (2507)	09-Feb-2002	sight	Point (494912,5180672) +/- 20m.
926057	Euphrasia gibbsiae subsp. psilantherea	swamp eyebright	e	CR	Wendy Potts (2507)	09-Feb-2002	sight	Point (494912,5180670) +/- 20m.

## Threatened flora within 5000 metres

Id	Species	Common name	Ss	Ns	Observers	Date	Obs type	Position (gda94)
926060	<i>Euphrasia gibbsiae</i> subsp. <i>psilantherea</i>	swamp eyebright	e	CR	Wendy Potts (2507)	09-Feb-2002	sight	Point (494912,5180684) +/- 20m.
926058	<i>Euphrasia gibbsiae</i> subsp. <i>psilantherea</i>	swamp eyebright	e	CR	Wendy Potts (2507)	09-Feb-2002	sight	Point (494912,5180671) +/- 20m.
227008	<i>Euphrasia gibbsiae</i> subsp. <i>psilantherea</i>	swamp eyebright	e	CR	P. Collier (5300)	26-Sep-1987	sight	Point (494912,5180683) +/- 100m.
926061	<i>Euphrasia gibbsiae</i> subsp. <i>psilantherea</i>	swamp eyebright	e	CR	Wendy Potts (2507)	09-Feb-2002	sight	Point (494913,5180673) +/- 20m.
926062	<i>Euphrasia gibbsiae</i> subsp. <i>psilantherea</i>	swamp eyebright	e	CR	Wendy Potts (2507)	09-Feb-2002	sight	Point (494914,5180677) +/- 20m.
926063	<i>Euphrasia gibbsiae</i> subsp. <i>psilantherea</i>	swamp eyebright	e	CR	Wendy Potts (2507)	09-Feb-2002	sight	Point (494914,5180680) +/- 20m.
925549	<i>Euphrasia gibbsiae</i> subsp. <i>psilantherea</i>	swamp eyebright	e	CR	Mick Iłowski (1677)	20-Sep-2004	sight	Point (494914,5180670) +/- 20m.
925548	<i>Euphrasia gibbsiae</i> subsp. <i>psilantherea</i>	swamp eyebright	e	CR	Mick Iłowski (1677)	20-Sep-2004	sight	Point (494914,5180673) +/- 20m.
925550	<i>Euphrasia gibbsiae</i> subsp. <i>psilantherea</i>	swamp eyebright	e	CR	Mick Iłowski (1677)	20-Sep-2004	sight	Point (494915,5180673) +/- 20m.
926064	<i>Euphrasia gibbsiae</i> subsp. <i>psilantherea</i>	swamp eyebright	e	CR	Wendy Potts (2507)	09-Feb-2002	sight	Point (494915,5180673) +/- 20m.
926065	<i>Euphrasia gibbsiae</i> subsp. <i>psilantherea</i>	swamp eyebright	e	CR	Wendy Potts (2507)	09-Feb-2002	sight	Point (494916,5180682) +/- 20m.
926068	<i>Euphrasia gibbsiae</i> subsp. <i>psilantherea</i>	swamp eyebright	e	CR	Wendy Potts (2507)	09-Feb-2002	sight	Point (494917,5180680) +/- 20m.
926067	<i>Euphrasia gibbsiae</i> subsp. <i>psilantherea</i>	swamp eyebright	e	CR	Wendy Potts (2507)	09-Feb-2002	sight	Point (494917,5180699) +/- 20m.
926069	<i>Euphrasia gibbsiae</i> subsp. <i>psilantherea</i>	swamp eyebright	e	CR	Wendy Potts (2507)	09-Feb-2002	sight	Point (494917,5180706) +/- 20m.
926066	<i>Euphrasia gibbsiae</i> subsp. <i>psilantherea</i>	swamp eyebright	e	CR	Wendy Potts (2507)	09-Feb-2002	sight	Point (494917,5180682) +/- 20m.
926070	<i>Euphrasia gibbsiae</i> subsp. <i>psilantherea</i>	swamp eyebright	e	CR	Wendy Potts (2507)	09-Feb-2002	sight	Point (494918,5180680) +/- 20m.
926080	<i>Euphrasia gibbsiae</i> subsp. <i>psilantherea</i>	swamp eyebright	e	CR	Wendy Potts (2507)	09-Feb-2002	sight	Point (494934,5180715) +/- 20m.
1100421	<i>Euphrasia gibbsiae</i> subsp. <i>psilantherea</i>	swamp eyebright	e	CR	Micah Visoiu (5870)	25-Sep-2008	sight	Point (494920,5180685) +/- 100m.
926071	<i>Euphrasia gibbsiae</i> subsp. <i>psilantherea</i>	swamp eyebright	e	CR	Wendy Potts (2507)	09-Feb-2002	sight	Point (494920,5180686) +/- 20m.
972433	<i>Euphrasia gibbsiae</i> subsp. <i>psilantherea</i>	swamp eyebright	e	CR	Micah Visoiu (5870)	12-Oct-2007	sight	Point (494921,5180686) +/- 100m.
925551	<i>Euphrasia gibbsiae</i> subsp. <i>psilantherea</i>	swamp eyebright	e	CR	Mick Iłowski (1677)	20-Sep-2004	sight	Point (494922,5180701) +/- 20m.
567957	<i>Prasophyllum</i> <i>pulchellum</i>	pretty leek-orchid	e	CR	Les Rubenach (1522)	10-Nov-1996?	sight	Point (492612,5190083) +/- 100m.
558121	<i>Thelymitra holmesii</i>	bluestar sun-orchid	r		Jeff Campbell (1185)	01-Dec-1992?	sight	Point (490612,5176183) +/- 2000m.
1201668	<i>Thelymitra holmesii</i>	bluestar sun-orchid	r		Hans Wapstra (3208), Annie Wapstra (9224)	05-Dec-2006	sight	Point (492307,5186513) +/- 10m.
227701	<i>Veronica novae-</i> <i>hollandiae</i>	coast speedwell	v		L. Rodway (4869)	Dec-1901	sight	Point (490812,5178183) +/- 5000m.
285126	<i>Veronica novae-</i> <i>hollandiae</i>	coast speedwell	v		Andrew Rozefelds (2777)	12-Jan-1997	sight	Point (492012,5177083) +/- 100m.

### Unverified Records

For more information about threatened species, please contact the Manager, Threatened Species Section.

Telephone: (03) 6233 8759

Email: [ThreatenedSpecies.Enquiries@dpipwe.tas.gov.au](mailto:ThreatenedSpecies.Enquiries@dpipwe.tas.gov.au)

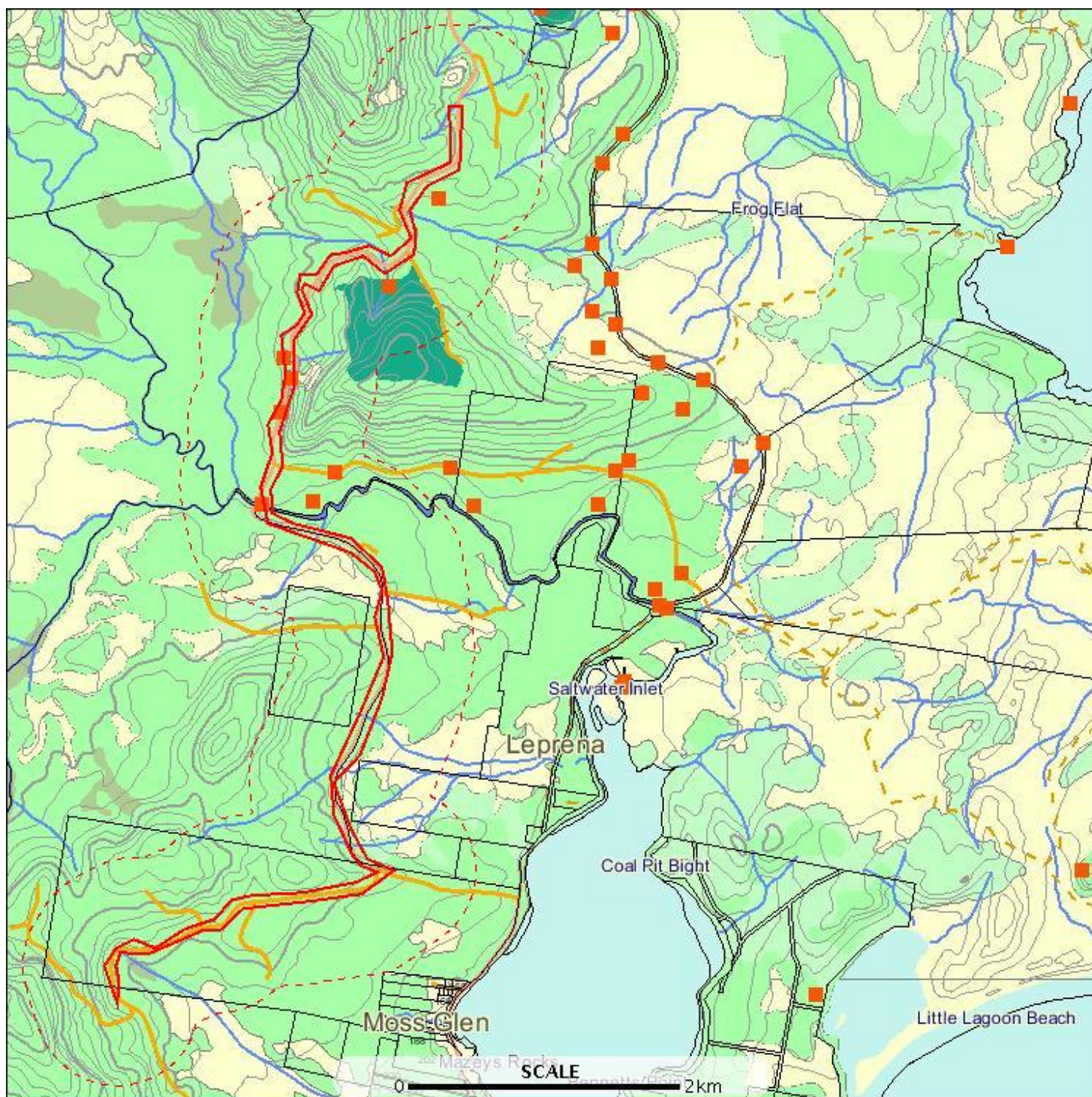
Address: GPO Box 44, Hobart, Tasmania, Australia, 7000



# Threatened fauna within 500 metres

E: 488442  
N: 5185933

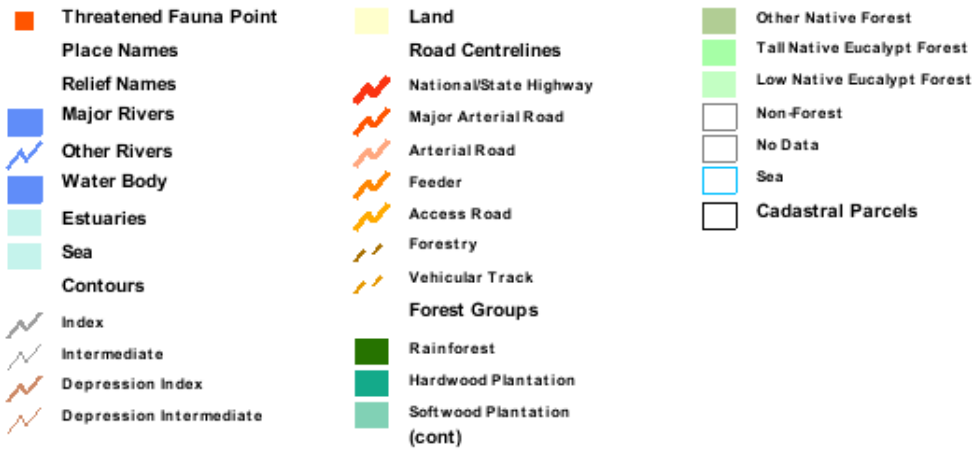
E: 491830  
N: 5185933



E: 488442  
N: 5179250

E: 491830  
N: 5179250

## Threatened fauna within 500 metres





## Threatened fauna within 500 metres

### Verified Records

Id	Species	Common name	Ss	Ns	Observers	Date	Obs type	Position (gda94)
1033296	Dasyurus maculatus subsp. maculatus	spotted-tailed quoll	r	VU	- Unknown (21598)	05-Feb-2005	sight	Point (490324,5182920) +/- 7m.
1038288	Dasyurus maculatus subsp. maculatus	spotted-tailed quoll	r	VU	- Unknown (21598)	30-Jan-2005	sight	Point (491087,5184774) +/- 7m.
1040567	Dasyurus maculatus subsp. maculatus	spotted-tailed quoll	r	VU	- Unknown (21598)	26-Mar-2005	sight	Point (490455,5183093) +/- 7m.
1036265	Dasyurus maculatus subsp. maculatus	spotted-tailed quoll	r	VU	- Unknown (21598)	02-Feb-2005	sight	Point (490143,5183792) +/- 7m.
1030092	Sarcophilus harrisii	tasmanian devil	e	EN	- Unknown (21598)	02-Feb-2005	sight	Point (490324,5182920) +/- 7m.
1042151	Sarcophilus harrisii	tasmanian devil	e	EN	STTD Volunteers (18629)	28-Jan-2005	sight	Point (490324,5182920) +/- 7m.
1027795	Sarcophilus harrisii	tasmanian devil	e	EN	- Unknown (21598)	08-Feb-2005	sight	Point (490455,5183093) +/- 7m.
1030234	Sarcophilus harrisii	tasmanian devil	e	EN	- Unknown (21598)	22-Mar-2005	sight	Point (490455,5183093) +/- 7m.
1160223	Sarcophilus harrisii	tasmanian devil	e	EN	Shannon Troy (12201)	Nov-2009	sight	Point (490123,5183467) +/- 5m.
1160203	Sarcophilus harrisii	tasmanian devil	e	EN	Shannon Troy (12201)	20-Nov-2009	sight	Point (490183,5183670) +/- 5m.
1160210	Sarcophilus harrisii	tasmanian devil	e	EN	Shannon Troy (12201)	23-Nov-2009	sight	Point (490183,5183670) +/- 5m.
1160189	Sarcophilus harrisii	tasmanian devil	e	EN	Shannon Troy (12201)	Dec-2009	fur	Point (490183,5183670) +/- 5m.
1038373	Sarcophilus harrisii	tasmanian devil	e	EN	- Unknown (21598)	04-Feb-2005	sight	Point (491087,5184774) +/- 7m.
1036256	Sarcophilus harrisii	tasmanian devil	e	EN	- Unknown (21598)	05-Feb-2005	sight	Point (491087,5184774) +/- 7m.
1160224	Sarcophilus harrisii	tasmanian devil	e	EN	Shannon Troy (12201)	Nov-2009	sight	Point (490004,5182899) +/- 5m.
1042203	Sarcophilus harrisii	tasmanian devil	e	EN	- Unknown (21598)	05-Feb-2005	sight	Point (490787,5184237) +/- 7m.
1043098	Sarcophilus harrisii	tasmanian devil	e	EN	- Unknown (21598)	06-Feb-2005	sight	Point (490787,5184237) +/- 7m.

### Unverified Records

## Threatened fauna within 500 metres (based on Habitat Mapping)

Species	Common name	Ss	Ns	Potential	Known	Core
Lissotes menalcas	mt. mangana stag beetle	v		1	0	0
Aquila audax	wedge-tailed eagle	pe	PEN	1	0	0
Perameles gunnii	eastern barred bandicoot		VU	1	0	0
Lathamus discolor	swift parrot	e	EN	1	1	1
Litoria raniformis	green and golden frog	v	VU	1	0	0
Tyto novaehollandiae	masked owl	pe	PVU	1	0	1
Pardalotus quadragintus	forty-spotted pardalote	e	EN	1	0	0
Haliaeetus leucogaster	white-bellied sea-eagle	v		1	0	0
Accipiter novaehollandiae	grey goshawk	e		1	0	1

For more information about threatened species, please contact the Manager, Threatened Species Section.

Telephone: (03) 6233 8759

Email: [ThreatenedSpecies.Enquiries@dpipwe.tas.gov.au](mailto:ThreatenedSpecies.Enquiries@dpipwe.tas.gov.au)

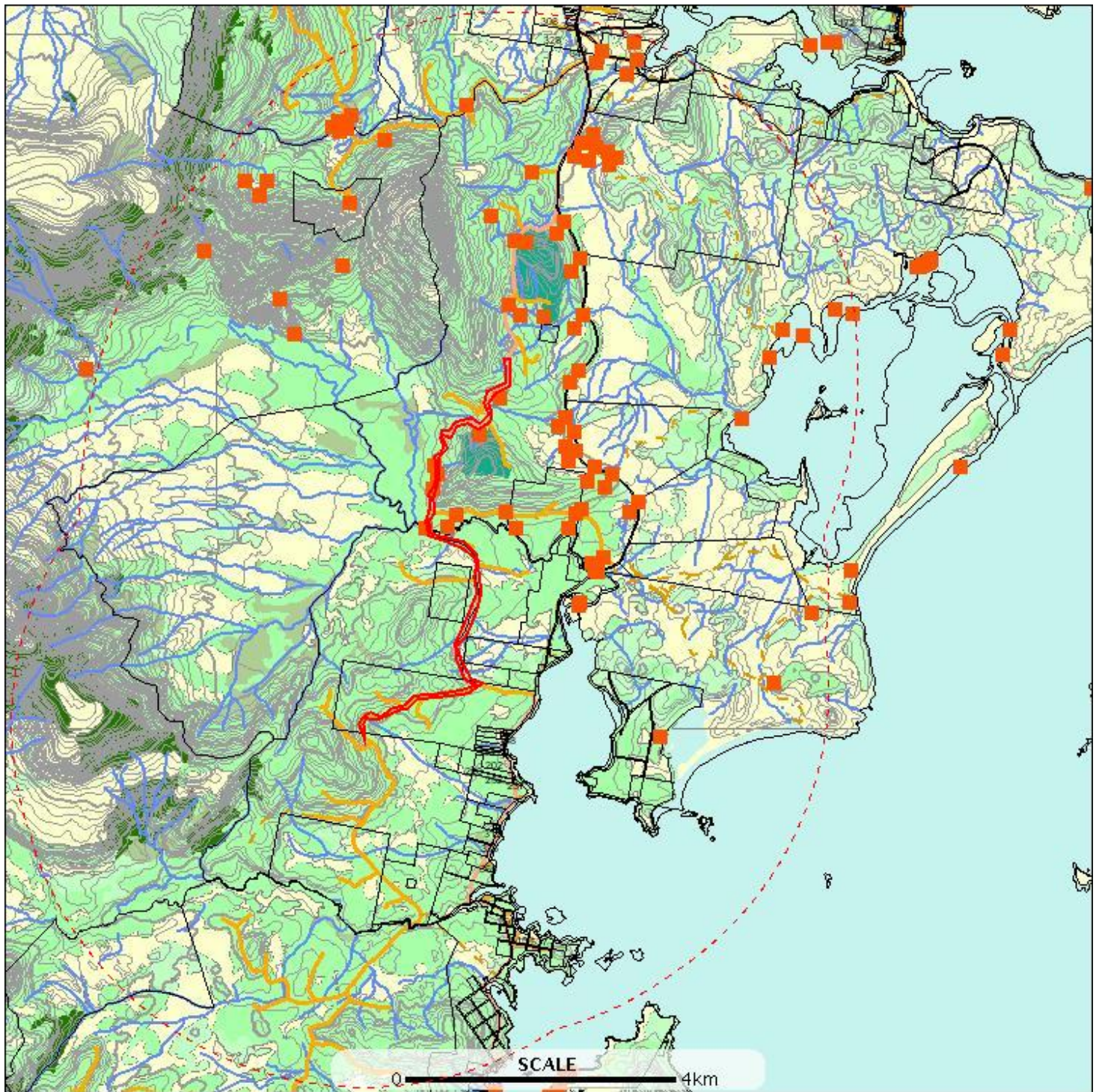
Address: GPO Box 44, Hobart, Tasmania, Australia, 7000



## Threatened fauna within 5000 metres

E: 483941  
N: 5190433

E: 496329  
N: 5190433



E: 483941  
N: 5174750

E: 496329  
N: 5174750

## Threatened fauna within 5000 metres





# Threatened fauna within 5000 metres

## Verified Records

Id	Species	Common name	Ss	Ns	Observers	Date	Obs type	Position (gda94)
1229714	Alcedo azurea subsp. diemenensis	azure kingfisher or azure kingfisher (tasmanian)	e	EN	George Appleby (22358)	14-Nov-2000	sight	Point (492412,5182383) +/- 100m.
1229712	Alcedo azurea subsp. diemenensis	azure kingfisher or azure kingfisher (tasmanian)	e	EN	- Unknown (21598)	01-Jan-1600?	sight	Point (492225,5181815) +/- 1000m.
1229713	Alcedo azurea subsp. diemenensis	azure kingfisher or azure kingfisher (tasmanian)	e	EN	George Appleby (22358)	14-Nov-2000	sight	Point (492212,5181783) +/- 100m.
1229587	Alcedo azurea subsp. diemenensis	azure kingfisher or azure kingfisher (tasmanian)	e	EN	G Rigby (22357)	23-Oct-1999	sight	Point (492485,5182265) +/- 2000m.
1031722	Dasyurus maculatus subsp. maculatus	spotted-tailed quoll	r	VU	- Unknown (21598)	06-Feb-2005	sight	Point (492358,5188194) +/- 7m.
1042399	Dasyurus maculatus subsp. maculatus	spotted-tailed quoll	r	VU	- Unknown (21598)	04-Feb-2005	sight	Point (491467,5187010) +/- 7m.
1038288	Dasyurus maculatus subsp. maculatus	spotted-tailed quoll	r	VU	- Unknown (21598)	30-Jan-2005	sight	Point (491087,5184774) +/- 7m.
1040567	Dasyurus maculatus subsp. maculatus	spotted-tailed quoll	r	VU	- Unknown (21598)	26-Mar-2005	sight	Point (490455,5183093) +/- 7m.
1036265	Dasyurus maculatus subsp. maculatus	spotted-tailed quoll	r	VU	- Unknown (21598)	02-Feb-2005	sight	Point (490143,5183792) +/- 7m.
1033296	Dasyurus maculatus subsp. maculatus	spotted-tailed quoll	r	VU	- Unknown (21598)	05-Feb-2005	sight	Point (490324,5182920) +/- 7m.
884528	Dasyurus maculatus subsp. maculatus	spotted-tailed quoll	r	VU	David Watts (7378)	01-Jan-1992?	sight	Point (488912,5187583) +/- 200m.
1200402	Goedetrechus mendumae	cave beetle (ida bay)	v		M Mendum (1705)	01-Mar-1969	sight	Point (488780,5188600) +/- 500m.
1200401	Goedetrechus mendumae	cave beetle (ida bay)	v		Arthur Clarke (1669)	1990s	sight	Point (488670,5188670) +/- 500m.
346510	Goedetrechus mendumae	cave beetle (ida bay)	v		A Clarke (1669)	07-Nov-1996?	sight	Point (487912,5186183) +/- 500m.
345246	Goedetrechus mendumae	cave beetle (ida bay)	v		A Clarke (1669)	24-Mar-1989?	sight	Point (486812,5186883) +/- 500m.
345204	Goedetrechus mendumae	cave beetle (ida bay)	v		A Clarke (1669)	21-Dec-1974?	sight	Point (487912,5186183) +/- 500m.
346504	Goedetrechus mendumae	cave beetle (ida bay)	v		A Clarke (1669)	29-Mar-1969?	sight	Point (487912,5186183) +/- 500m.
345191	Goedetrechus mendumae	cave beetle (ida bay)	v		A Clarke (1669)	24-May-1969?	sight	Point (487912,5186183) +/- 500m.
345222	Goedetrechus mendumae	cave beetle (ida bay)	v		A Clarke (1669)	02-Mar-1969?	sight	Point (487912,5186183) +/- 500m.
345202	Goedetrechus mendumae	cave beetle (ida bay)	v		A Clarke (1669)	03-Mar-1969?	sight	Point (487912,5186183) +/- 500m.
949311	Haliaeetus leucogaster	white-bellied sea-eagle	v		Nick Mooney (16443)	1980s	nest	Point (493395,5179900) +/- 0m.
891000	Hickmanoxyomma cavaticum	cave harvestman	r		S Eberhard (2279)	20-Jan-1985?	sight	Point (487412,5187883) +/- 1000m.
890983	Hickmanoxyomma cavaticum	cave harvestman	r		A Goede (1813)	27-Oct-1967?	sight	Point (487412,5187883) +/- 1000m.
890803	Hickmanoxyomma cavaticum	cave harvestman	r		D Alcock (6754)	12-Jun-1949?	sight	Point (487412,5187883) +/- 1000m.
1200436	Hickmanoxyomma cavaticum	cave harvestman	r		R Swain (2190), Alistair Richardson (2595), Stefan Eberhard (3474)	26-Oct-1985	sight	Point (488870,5188650) +/- 500m.
1200431	Hickmanoxyomma cavaticum	cave harvestman	r		R Swain (2190), Alistair Richardson (2595), Stefan Eberhard (3474)	29-Jan-1993	sight	Point (488780,5188600) +/- 500m.
1200417	Hickmanoxyomma cavaticum	cave harvestman	r		Arthur Clarke (1669)	22-Aug-1985	sight	Point (488780,5188600) +/- 500m.
1200420	Hickmanoxyomma cavaticum	cave harvestman	r		Arthur Clarke (1669)	26-Jan-1994	sight	Point (488780,5188600) +/- 500m.
1200412	Hickmanoxyomma cavaticum	cave harvestman	r		Arthur Clarke (1669)	25-Jun-1985	sight	Point (488780,5188600) +/- 500m.
1200433	Hickmanoxyomma cavaticum	cave harvestman	r		R Swain (2190), Alistair Richardson (2595), Stefan Eberhard (3474)	12-Jun-1905	sight	Point (488870,5188650) +/- 500m.
1200423	Hickmanoxyomma cavaticum	cave harvestman	r		Arthur Clarke (1669)	13-May-1986	sight	Point (488870,5188650) +/- 500m.



## Threatened fauna within 5000 metres

Id	Species	Common name	Ss	Ns	Observers	Date	Obs type	Position (gda94)
1200426	Hickmanoxyomma cavaticum	cave harvestman	r		R Swain (2190), Alistair Richardson (2595), Stefan Eberhard (3474)	04-May-1990	sight	Point (488870,5188650) +/- 500m.
1200427	Hickmanoxyomma cavaticum	cave harvestman	r		R Swain (2190), Alistair Richardson (2595), Stefan Eberhard (3474)	05-May-1990	sight	Point (488870,5188650) +/- 500m.
1200428	Hickmanoxyomma cavaticum	cave harvestman	r		R Swain (2190), Alistair Richardson (2595), Stefan Eberhard (3474)	04-Apr-1990	sight	Point (488870,5188650) +/- 500m.
1200424	Hickmanoxyomma cavaticum	cave harvestman	r		R Swain (2190), Alistair Richardson (2595), Stefan Eberhard (3474)	14-Jan-1993	sight	Point (488870,5188650) +/- 500m.
1200416	Hickmanoxyomma cavaticum	cave harvestman	r		Arthur Clarke (1669)	24-Mar-1989	sight	Point (488670,5188670) +/- 500m.
1200411	Hickmanoxyomma cavaticum	cave harvestman	r		Arthur Clarke (1669)	26-Apr-1987	sight	Point (488670,5188670) +/- 500m.
1200408	Hickmanoxyomma cavaticum	cave harvestman	r		Arthur Clarke (1669)	1990s	sight	Point (488750,5188750) +/- 500m.
1200434	Hickmanoxyomma cavaticum	cave harvestman	r		R Swain (2190), Alistair Richardson (2595), Stefan Eberhard (3474)	24-Mar-1989	sight	Point (488750,5188750) +/- 500m.
1200410	Hickmanoxyomma cavaticum	cave harvestman	r		Arthur Clarke (1669)	12-Oct-1985	sight	Point (488750,5188750) +/- 500m.
1200418	Hickmanoxyomma cavaticum	cave harvestman	r		Arthur Clarke (1669)	06-May-1990	sight	Point (488750,5188750) +/- 500m.
1200409	Hickmanoxyomma cavaticum	cave harvestman	r		Arthur Clarke (1669)	24-Aug-1985	sight	Point (488750,5188750) +/- 500m.
1200415	Hickmanoxyomma cavaticum	cave harvestman	r		Arthur Clarke (1669)	07-Feb-1986	sight	Point (488750,5188750) +/- 500m.
1200430	Hickmanoxyomma cavaticum	cave harvestman	r		R Swain (2190), Alistair Richardson (2595), Stefan Eberhard (3474)	11-Nov-1986	sight	Point (488750,5188750) +/- 500m.
1200425	Hickmanoxyomma cavaticum	cave harvestman	r		R Swain (2190), Alistair Richardson (2595), Stefan Eberhard (3474)	1990s	sight	Point (488850,5188750) +/- 500m.
1200422	Hickmanoxyomma cavaticum	cave harvestman	r		Arthur Clarke (1669)	19-Jan-1986	sight	Point (488750,5188750) +/- 500m.
1200419	Hickmanoxyomma cavaticum	cave harvestman	r		Arthur Clarke (1669)	27-Mar-1993	sight	Point (488930,5188830) +/- 500m.
1200435	Hickmanoxyomma cavaticum	cave harvestman	r		R Swain (2190), Alistair Richardson (2595), Stefan Eberhard (3474)	29-Sep-1987	sight	Point (488930,5188830) +/- 500m.
1200414	Hickmanoxyomma cavaticum	cave harvestman	r		Arthur Clarke (1669)	17-Jan-1993	sight	Point (488930,5188830) +/- 500m.
1200432	Hickmanoxyomma cavaticum	cave harvestman	r		R Swain (2190), Alistair Richardson (2595), Stefan Eberhard (3474)	17-Aug-1985	sight	Point (488930,5188830) +/- 500m.
890832	Hickmanoxyomma cavaticum	cave harvestman	r		A Goede (1813)	15-Jan-1975?	sight	Point (488112,5185683) +/- 100m.
891001	Hickmanoxyomma cavaticum	cave harvestman	r		A Goede (1813)	02-Mar-1967?	sight	Point (488112,5185683) +/- 100m.
891008	Hickmanoxyomma cavaticum	cave harvestman	r		N Poulter (1830)	22-Jan-1973?	sight	Point (488112,5185683) +/- 100m.
890810	Hickmanoxyomma cavaticum	cave harvestman	r		A Goede (1813)	23-Mar-1969?	sight	Point (488112,5185683) +/- 100m.
891012	Hickmanoxyomma cavaticum	cave harvestman	r		A Clarke (1669)	31-Oct-1987?	sight	Point (488112,5185683) +/- 100m.

## Threatened fauna within 5000 metres

Id	Species	Common name	Ss	Ns	Observers	Date	Obs type	Position (gda94)
891009	Hickmanoxyomma cavaticum	cave harvestman	r		A Goede (1813)	19-May-1974?	sight	Point (488112,5185683) +/- 100m.
891005	Hickmanoxyomma cavaticum	cave harvestman	r		A Goede (1813)	29-Mar-1969?	sight	Point (488112,5185683) +/- 100m.
891007	Hickmanoxyomma cavaticum	cave harvestman	r		W Lehmann (2519)	21-Apr-1971?	sight	Point (488112,5185683) +/- 100m.
891003	Hickmanoxyomma cavaticum	cave harvestman	r		A Goede (1813)	03-Nov-1968?	sight	Point (488112,5185683) +/- 100m.
891002	Hickmanoxyomma cavaticum	cave harvestman	r		A Goede (1813)	27-Feb-1968?	sight	Point (488112,5185683) +/- 100m.
891006	Hickmanoxyomma cavaticum	cave harvestman	r		A Goede (1813)	25-Jul-1971?	sight	Point (488112,5185683) +/- 100m.
890831	Hickmanoxyomma cavaticum	cave harvestman	r		A Goede (1813)	19-Aug-1974?	sight	Point (488112,5185683) +/- 100m.
891010	Hickmanoxyomma cavaticum	cave harvestman	r		A Goede (1813)	21-Dec-1974?	sight	Point (488112,5185683) +/- 100m.
890812	Hickmanoxyomma cavaticum	cave harvestman	r		A Goede (1813)	22-Nov-1970?	sight	Point (488112,5185683) +/- 100m.
891011	Hickmanoxyomma cavaticum	cave harvestman	r		A Goede (1813)	01-Jan-1976?	sight	Point (488112,5185683) +/- 100m.
891004	Hickmanoxyomma cavaticum	cave harvestman	r		A Goede (1813)	03-Nov-1969?	sight	Point (488112,5185683) +/- 100m.
890811	Hickmanoxyomma cavaticum	cave harvestman	r		E Hamilton-Smith (7420)	24-May-1969?	sight	Point (488112,5185683) +/- 100m.
890830	Hickmanoxyomma cavaticum	cave harvestman	r		A Goede (1813)	05-Nov-1972?	sight	Point (488112,5185683) +/- 100m.
890833	Hickmanoxyomma cavaticum	cave harvestman	r		S Eberhard (2279)	01-Dec-1984?	sight	Point (487412,5187883) +/- 1000m.
891013	Hickmanoxyomma cavaticum	cave harvestman	r		A Goede (1813)	13-Jan-1968?	sight	Point (487412,5187883) +/- 1000m.
890809	Hickmanoxyomma cavaticum	cave harvestman	r		S Eberhard (2279)	11-Nov-1986?	sight	Point (487412,5187883) +/- 1000m.
890807	Hickmanoxyomma cavaticum	cave harvestman	r		A Goede (1813)	25-Jul-1971?	sight	Point (487412,5187883) +/- 1000m.
890984	Hickmanoxyomma cavaticum	cave harvestman	r		A Goede (1813)	15-Nov-1975?	sight	Point (487412,5187883) +/- 1000m.
891033	Hickmanoxyomma cavaticum	cave harvestman	r		S Eberhard (2279)	21-Nov-1986?	sight	Point (487412,5187883) +/- 1000m.
891014	Hickmanoxyomma cavaticum	cave harvestman	r		A Goede (1813)	18-Jan-1969?	sight	Point (487412,5187883) +/- 1000m.
890806	Hickmanoxyomma cavaticum	cave harvestman	r		A Goede (1813)	29-Jun-1974?	sight	Point (487412,5187883) +/- 1000m.
890804	Hickmanoxyomma cavaticum	cave harvestman	r		A Goede (1813)	22-Dec-1964?	sight	Point (487412,5187883) +/- 1000m.
891032	Hickmanoxyomma cavaticum	cave harvestman	r		S Eberhard (2279)	26-Oct-1985?	sight	Point (487412,5187883) +/- 1000m.
890835	Hickmanoxyomma cavaticum	cave harvestman	r		A Clarke (1669)	24-Mar-1989?	sight	Point (487412,5187883) +/- 1000m.
890981	Hickmanoxyomma cavaticum	cave harvestman	r		V Hickman (2452)	22-Nov-1939?	sight	Point (487412,5187883) +/- 1000m.
890837	Hickmanoxyomma cavaticum	cave harvestman	r		S Eberhard (2279)	07-Feb-1986?	sight	Point (487412,5187883) +/- 1000m.
890836	Hickmanoxyomma cavaticum	cave harvestman	r		A Clarke (1669)	21-Jun-1987?	sight	Point (487412,5187883) +/- 1000m.
890805	Hickmanoxyomma cavaticum	cave harvestman	r		A Richards (2584)	10-Nov-1966?	sight	Point (487412,5187883) +/- 1000m.
891031	Hickmanoxyomma cavaticum	cave harvestman	r		A Clarke (1669)	23-Jan-1988?	sight	Point (487412,5187883) +/- 1000m.
890972	Hickmanoxyomma cavaticum	cave harvestman	r		S Eberhard (2279)	01-Jan-1990?	sight	Point (487412,5187883) +/- 1000m.
890834	Hickmanoxyomma cavaticum	cave harvestman	r		S Eberhard (2279)	01-Jan-1984?	sight	Point (487412,5187883) +/- 1000m.
890808	Hickmanoxyomma cavaticum	cave harvestman	r		A Goede (1813)	29-Feb-1976?	sight	Point (487412,5187883) +/- 1000m.
890982	Hickmanoxyomma cavaticum	cave harvestman	r		A Lea (1917)	01-Jan-1990?	sight	Point (487412,5187883) +/- 1000m.
346680	Idacarabus troglodytes	cave beetle (precipitous bluff)	r		A Clarke (1669)	29-Mar-1987?	sight	Point (489412,5188483) +/- 500m.
1200458	Idacarabus troglodytes	cave beetle (precipitous bluff)	r		Arthur Clarke (1669)	26-Jan-1994	sight	Point (488780,5188600) +/- 500m.

## Threatened fauna within 5000 metres

Id	Species	Common name	Ss	Ns	Observers	Date	Obs type	Position (gda94)
1200453	Idacarabus troglodytes	cave beetle (precipitous bluff)	r		Arthur Clarke (1669)	07-Sep-1986	sight	Point (488780,5188600) +/- 500m.
1200455	Idacarabus troglodytes	cave beetle (precipitous bluff)	r		Arthur Clarke (1669)	25-Jun-1989	sight	Point (488780,5188600) +/- 500m.
1200447	Idacarabus troglodytes	cave beetle (precipitous bluff)	r		Arthur Clarke (1669)	22-Aug-1985	sight	Point (488780,5188600) +/- 500m.
1200452	Idacarabus troglodytes	cave beetle (precipitous bluff)	r		Arthur Clarke (1669)	30-Mar-1986	sight	Point (488780,5188600) +/- 500m.
1200456	Idacarabus troglodytes	cave beetle (precipitous bluff)	r		Arthur Clarke (1669)	21-Oct-1988	sight	Point (488780,5188600) +/- 500m.
1200449	Idacarabus troglodytes	cave beetle (precipitous bluff)	r		Arthur Clarke (1669)	30-Nov-1985	sight	Point (488870,5188650) +/- 500m.
1200451	Idacarabus troglodytes	cave beetle (precipitous bluff)	r		Arthur Clarke (1669)	12-Oct-1985	sight	Point (488870,5188650) +/- 500m.
1200463	Idacarabus troglodytes	cave beetle (precipitous bluff)	r		Stefan Eberhard (3474)	12-Jun-2005	sight	Point (488870,5188650) +/- 500m.
1200450	Idacarabus troglodytes	cave beetle (precipitous bluff)	r		Arthur Clarke (1669)	26-Oct-1985	sight	Point (488870,5188650) +/- 500m.
1200462	Idacarabus troglodytes	cave beetle (precipitous bluff)	r		R Swain (2190), Alistair Richardson (2595), Stefan Eberhard (3474)	16-Apr-1990	sight	Point (488870,5188650) +/- 500m.
1200465	Idacarabus troglodytes	cave beetle (precipitous bluff)	r		Stefan Eberhard (3474)	07-Apr-1986	sight	Point (488870,5188650) +/- 500m.
1200464	Idacarabus troglodytes	cave beetle (precipitous bluff)	r		Stefan Eberhard (3474)	05-Apr-1990	sight	Point (488870,5188650) +/- 500m.
1200459	Idacarabus troglodytes	cave beetle (precipitous bluff)	r		Arthur Clarke (1669)	19-Jan-1986	sight	Point (488750,5188750) +/- 500m.
1200461	Idacarabus troglodytes	cave beetle (precipitous bluff)	r		R Swain (2190), Alistair Richardson (2595), Stefan Eberhard (3474)	25-Mar-1989	sight	Point (488750,5188750) +/- 500m.
1200460	Idacarabus troglodytes	cave beetle (precipitous bluff)	r		Arthur Clarke (1669)	01-Apr-1986	sight	Point (488750,5188750) +/- 500m.
1200446	Idacarabus troglodytes	cave beetle (precipitous bluff)	r		Arthur Clarke (1669)	21-Jan-1985	sight	Point (488750,5188750) +/- 500m.
1200457	Idacarabus troglodytes	cave beetle (precipitous bluff)	r		Arthur Clarke (1669)	07-Sep-1986	sight	Point (488750,5188750) +/- 500m.
1200445	Idacarabus troglodytes	cave beetle (precipitous bluff)	r		Arthur Clarke (1669)	13-Feb-1971	sight	Point (488750,5188750) +/- 500m.
1200448	Idacarabus troglodytes	cave beetle (precipitous bluff)	r		Arthur Clarke (1669)	24-Mar-1985	sight	Point (488750,5188750) +/- 500m.
1200454	Idacarabus troglodytes	cave beetle (precipitous bluff)	r		Arthur Clarke (1669)	29-Mar-1987	sight	Point (488930,5188830) +/- 500m.
346621	Idacarabus troglodytes	cave beetle (precipitous bluff)	r		A Clarke (1669)	12-Oct-1985?	sight	Point (488812,5186683) +/- 500m.
345285	Idacarabus troglodytes	cave beetle (precipitous bluff)	r		A Clarke (1669)	26-Oct-1985?	sight	Point (488812,5186683) +/- 500m.
346561	Idacarabus troglodytes	cave beetle (precipitous bluff)	r		A Clarke (1669)	16-Apr-1990?	sight	Point (488812,5186683) +/- 500m.
534097	Idacarabus troglodytes	cave beetle (precipitous bluff)	r		Stefan Eberhard (3474)	1990	sight	Point (488812,5186683) +/- 100m.
534098	Idacarabus troglodytes	cave beetle (precipitous bluff)	r		Stefan Eberhard (3474)	05-Apr-1990	sight	Point (488812,5186683) +/- 100m.
346597	Idacarabus troglodytes	cave beetle (precipitous bluff)	r		A Clarke (1669)	30-Nov-1985?	sight	Point (488812,5186683) +/- 500m.
524459	Idacarabus troglodytes	cave beetle (precipitous bluff)	r		Stefan Eberhard (3474)	07-Apr-1986	sight	Point (488812,5186683) +/- 100m.
345313	Idacarabus troglodytes	cave beetle (precipitous bluff)	r		A Clarke (1669)	05-Apr-1990?	sight	Point (488812,5186683) +/- 500m.
890977	Idacarabus troglodytes	cave beetle (precipitous bluff)	r		S Eberhard (2279)	01-Jan-1991?	sight	Point (488112,5185683) +/- 100m.
346503	Idacarabus troglodytes	cave beetle (precipitous bluff)	r		A Clarke (1669)	21-Aug-1990?	sight	Point (487912,5186183) +/- 500m.
346500	Idacarabus troglodytes	cave beetle (precipitous bluff)	r		A Clarke (1669)	19-Aug-1974?	sight	Point (487912,5186183) +/- 500m.
345173	Idacarabus troglodytes	cave beetle (precipitous bluff)	r		A Clarke (1669)	24-May-1969?	sight	Point (487912,5186183) +/- 500m.
346704	Idacarabus troglodytes	cave beetle (precipitous bluff)	r		A Clarke (1669)	21-Oct-1988?	sight	Point (487912,5186183) +/- 500m.



## Threatened fauna within 5000 metres

Id	Species	Common name	Ss	Ns	Observers	Date	Obs type	Position (gda94)
345371	Idacarabus troglodytes	cave beetle (precipitous bluff)	r		A Clarke (1669)	26-Jan-1994?	sight	Point (487912,5186183) +/- 500m.
345194	Idacarabus troglodytes	cave beetle (precipitous bluff)	r		A Clarke (1669)	23-Apr-1972?	sight	Point (487912,5186183) +/- 500m.
345340	Idacarabus troglodytes	cave beetle (precipitous bluff)	r		A Clarke (1669)	07-Sep-1986?	sight	Point (487912,5186183) +/- 500m.
345307	Idacarabus troglodytes	cave beetle (precipitous bluff)	r		A Clarke (1669)	30-Mar-1986?	sight	Point (487912,5186183) +/- 500m.
346535	Idacarabus troglodytes	cave beetle (precipitous bluff)	r		A Clarke (1669)	24-Jun-1967?	sight	Point (487912,5186183) +/- 500m.
346482	Idacarabus troglodytes	cave beetle (precipitous bluff)	r		A Clarke (1669)	22-Mar-1969?	sight	Point (487912,5186183) +/- 500m.
345197	Idacarabus troglodytes	cave beetle (precipitous bluff)	r		A Clarke (1669)	26-Apr-1987?	sight	Point (487912,5186183) +/- 500m.
345192	Idacarabus troglodytes	cave beetle (precipitous bluff)	r		A Clarke (1669)	18-May-1968?	sight	Point (487912,5186183) +/- 500m.
345172	Idacarabus troglodytes	cave beetle (precipitous bluff)	r		A Clarke (1669)	02-Jan-1971?	sight	Point (487912,5186183) +/- 500m.
345315	Idacarabus troglodytes	cave beetle (precipitous bluff)	r		A Clarke (1669)	04-May-1990?	sight	Point (488812,5186683) +/- 500m.
345314	Idacarabus troglodytes	cave beetle (precipitous bluff)	r		A Clarke (1669)	07-Apr-1986?	sight	Point (488812,5186683) +/- 500m.
345283	Idacarabus troglodytes	cave beetle (precipitous bluff)	r		A Clarke (1669)	13-Feb-1971?	sight	Point (488812,5186683) +/- 500m.
345250	Idacarabus troglodytes	cave beetle (precipitous bluff)	r		A Clarke (1669)	01-Jan-1990?	sight	Point (488812,5186683) +/- 500m.
345949	Idacarabus troglodytes	cave beetle (precipitous bluff)	r		A Clarke (1669)	19-Jan-1986?	sight	Point (487612,5187683) +/- 500m.
345145	Idacarabus troglodytes	cave beetle (precipitous bluff)	r		A Clarke (1669)	01-Dec-1909?	sight	Point (487612,5187683) +/- 500m.
346563	Idacarabus troglodytes	cave beetle (precipitous bluff)	r		A Clarke (1669)	22-Aug-1985?	sight	Point (487612,5187683) +/- 500m.
346455	Idacarabus troglodytes	cave beetle (precipitous bluff)	r		A Clarke (1669)	25-Jul-1971?	sight	Point (487612,5187683) +/- 500m.
346417	Idacarabus troglodytes	cave beetle (precipitous bluff)	r		A Clarke (1669)	14-Jun-1969?	sight	Point (487612,5187683) +/- 500m.
346705	Idacarabus troglodytes	cave beetle (precipitous bluff)	r		A Clarke (1669)	07-Sep-1996?	sight	Point (487612,5187683) +/- 500m.
346475	Idacarabus troglodytes	cave beetle (precipitous bluff)	r		A Clarke (1669)	01-Jan-1909?	sight	Point (487612,5187683) +/- 500m.
346562	Idacarabus troglodytes	cave beetle (precipitous bluff)	r		A Clarke (1669)	21-Jan-1985?	sight	Point (487612,5187683) +/- 500m.
345221	Idacarabus troglodytes	cave beetle (precipitous bluff)	r		A Clarke (1669)	13-Jul-1985?	sight	Point (487912,5186183) +/- 500m.
346588	Idacarabus troglodytes	cave beetle (precipitous bluff)	r		A Clarke (1669)	24-Mar-1985?	sight	Point (487612,5187683) +/- 500m.
345167	Idacarabus troglodytes	cave beetle (precipitous bluff)	r		A Clarke (1669)	01-Feb-1957?	sight	Point (487612,5187683) +/- 500m.
345164	Idacarabus troglodytes	cave beetle (precipitous bluff)	r		A Clarke (1669)	01-Jan-1947?	sight	Point (487612,5187683) +/- 500m.
346542	Idacarabus troglodytes	cave beetle (precipitous bluff)	r		A Clarke (1669)	01-Apr-1984?	sight	Point (487612,5187683) +/- 500m.
347351	Idacarabus troglodytes	cave beetle (precipitous bluff)	r		A Clarke (1669)	01-Apr-1986?	sight	Point (487612,5187683) +/- 500m.
890978	Idacarabus troglodytes	cave beetle (precipitous bluff)	r		S Eberhard (2279)	01-Jan-1991?	sight	Point (487412,5187883) +/- 1000m.
890976	Idacarabus troglodytes	cave beetle (precipitous bluff)	r		S Eberhard (2279)	01-Jan-1991?	sight	Point (487712,5187883) +/- 100m.
890973	Idacarabus troglodytes	cave beetle (precipitous bluff)	r		S Eberhard (2279)	01-Jan-1990?	sight	Point (487412,5187883) +/- 1000m.
346416	Idacarabus troglodytes	cave beetle (precipitous bluff)	r		A Clarke (1669)	25-Mar-1989?	sight	Point (487612,5187683) +/- 500m.
345231	Idacarabus troglodytes	cave beetle (precipitous bluff)	r		A Clarke (1669)	13-Feb-1971?	sight	Point (487612,5187683) +/- 500m.
345165	Idacarabus troglodytes	cave beetle (precipitous bluff)	r		A Clarke (1669)	11-Nov-1986?	sight	Point (487612,5187683) +/- 500m.
345116	Idacarabus troglodytes	cave beetle (precipitous bluff)	r		A Clarke (1669)	07-Nov-1996?	sight	Point (487612,5187683) +/- 500m.
346684	Idacarabus troglodytes	cave beetle (precipitous bluff)	r		A Clarke (1669)	26-Apr-1987?	sight	Point (486812,5186883) +/- 500m.

## Threatened fauna within 5000 metres

Id	Species	Common name	Ss	Ns	Observers	Date	Obs type	Position (gda94)
345198	Idacarabus troglodytes	cave beetle (precipitous bluff)	r		A Clarke (1669)	03-Nov-1968?	sight	Point (487912,5186183) +/- 500m.
345193	Idacarabus troglodytes	cave beetle (precipitous bluff)	r		A Clarke (1669)	27-Feb-1968?	sight	Point (487912,5186183) +/- 500m.
345176	Idacarabus troglodytes	cave beetle (precipitous bluff)	r		A Clarke (1669)	03-Jul-1988?	sight	Point (487912,5186183) +/- 500m.
346688	Idacarabus troglodytes	cave beetle (precipitous bluff)	r		A Clarke (1669)	25-Jun-1989?	sight	Point (487912,5186183) +/- 500m.
345278	Idacarabus troglodytes	cave beetle (precipitous bluff)	r		A Clarke (1669)	22-Aug-1985?	sight	Point (487912,5186183) +/- 500m.
345195	Idacarabus troglodytes	cave beetle (precipitous bluff)	r		A Clarke (1669)	23-Mar-1969?	sight	Point (487912,5186183) +/- 500m.
846692	Lathamus discolor	swift parrot	e	EN	Ray Brereton (2095)	16-Oct-1983?	sight	Point (493012,5189883) +/- 1000m.
1159906	Lathamus discolor	swift parrot	e	EN	Matthew Webb (7125)	30-Oct-2004	sight	Point (495567,5181682) +/- 10m.
1159907	Lathamus discolor	swift parrot	e	EN	Matthew Webb (7125)	30-Oct-2004	sight	Point (495025,5180665) +/- 10m.
870857	Lathamus discolor	swift parrot	e	EN	Peter Brown (1919)	17-Oct-1987?	sight	Point (493012,5189883) +/- 100m.
345232	Olgania excavata	cave spider (bubs hill cave)	r		A Clarke (1669)	24-Mar-1989?	sight	Point (486812,5186883) +/- 500m.
953022	Patiriella vivipara	live-bearing seastar	pv	PVU	Colin Shepherd (3267),Eric Brain (7100)	23-Oct-2006	sight	Point (496151,5185989) +/- 10m.
953024	Patiriella vivipara	live-bearing seastar	pv	PVU	Colin Shepherd (3267),Eric Brain (7100)	23-Oct-2006	sight	Point (495160,5185754) +/- 10m.
953023	Patiriella vivipara	live-bearing seastar	pv	PVU	Colin Shepherd (3267),Eric Brain (7100)	23-Oct-2006	sight	Point (495918,5186046) +/- 10m.
953021	Patiriella vivipara	live-bearing seastar	pv	PVU	Colin Shepherd (3267),Eric Brain (7100)	23-Oct-2006	sight	Point (495452,5185662) +/- 10m.
1234946	Patiriella vivipara	live-bearing seastar	pv	PVU	Michael Garner (1665)	13-Apr-2006	sight	Point (494573,5184478) +/- 100m.
953025	Patiriella vivipara	live-bearing seastar	pv	PVU	Colin Shepherd (3267),Eric Brain (7100)	23-Oct-2006	sight	Point (494955,5185348) +/- 10m.
1037874	Sarcophilus harrisii	tasmanian devil	e	EN	- Unknown (21598)	04-Feb-2005	sight	Point (492066,5183861) +/- 7m.
1039447	Sarcophilus harrisii	tasmanian devil	e	EN	- Unknown (21598)	30-Jan-2005	sight	Point (492066,5183861) +/- 7m.
1039602	Sarcophilus harrisii	tasmanian devil	e	EN	- Unknown (21598)	24-Mar-2005	sight	Point (492177,5184005) +/- 7m.
1035109	Sarcophilus harrisii	tasmanian devil	e	EN	- Unknown (21598)	22-Mar-2005	sight	Point (492177,5184005) +/- 7m.
1032629	Sarcophilus harrisii	tasmanian devil	e	EN	- Unknown (21598)	05-Feb-2005	sight	Point (492029,5184079) +/- 7m.
1042203	Sarcophilus harrisii	tasmanian devil	e	EN	- Unknown (21598)	05-Feb-2005	sight	Point (490787,5184237) +/- 7m.
1043098	Sarcophilus harrisii	tasmanian devil	e	EN	- Unknown (21598)	06-Feb-2005	sight	Point (490787,5184237) +/- 7m.
1043843	Sarcophilus harrisii	tasmanian devil	e	EN	Clare Hawkins (8562)	10-Feb-2005	sight	Point (492144,5184280) +/- 7m.
1034155	Sarcophilus harrisii	tasmanian devil	e	EN	- Unknown (21598)	22-Mar-2005	sight	Point (492144,5184280) +/- 7m.
1035555	Sarcophilus harrisii	tasmanian devil	e	EN	Clare Hawkins (8562)	06-Feb-2005	sight	Point (491923,5184356) +/- 7m.
1030761	Sarcophilus harrisii	tasmanian devil	e	EN	- Unknown (21598)	22-Mar-2005	sight	Point (492030,5184493) +/- 7m.
1034233	Sarcophilus harrisii	tasmanian devil	e	EN	- Unknown (21598)	09-Feb-2005	sight	Point (492030,5184493) +/- 7m.
1039539	Sarcophilus harrisii	tasmanian devil	e	EN	Jim Richey (18587)	24-Mar-2005	sight	Point (492030,5184493) +/- 7m.
1027299	Sarcophilus harrisii	tasmanian devil	e	EN	- Unknown (21598)	25-Mar-2005	sight	Point (492030,5184493) +/- 7m.
1036256	Sarcophilus harrisii	tasmanian devil	e	EN	- Unknown (21598)	05-Feb-2005	sight	Point (491087,5184774) +/- 7m.
1038373	Sarcophilus harrisii	tasmanian devil	e	EN	- Unknown (21598)	04-Feb-2005	sight	Point (491087,5184774) +/- 7m.

## Threatened fauna within 5000 metres

Id	Species	Common name	Ss	Ns	Observers	Date	Obs type	Position (gda94)
1043698	Sarcophilus harrisii	tasmanian devil	e	EN	- Unknown (21598)	30-Jan-2005	sight	Point (492090,5184986) +/- 7m.
1025602	Sarcophilus harrisii	tasmanian devil	e	EN	- Unknown (21598)	31-Jan-2005	sight	Point (492090,5184986) +/- 7m.
1038051	Sarcophilus harrisii	tasmanian devil	e	EN	- Unknown (21598)	22-Mar-2005	sight	Point (492217,5185162) +/- 7m.
1031790	Sarcophilus harrisii	tasmanian devil	e	EN	- Unknown (21598)	29-Jan-2005	sight	Point (492440,5182280) +/- 7m.
1043561	Sarcophilus harrisii	tasmanian devil	e	EN	Clare Hawkins (8562)	03-Feb-2005	sight	Point (492440,5182280) +/- 7m.
1040321	Sarcophilus harrisii	tasmanian devil	e	EN	STTD Volunteers (18629)	28-Jan-2005	sight	Point (492440,5182280) +/- 7m.
1038682	Sarcophilus harrisii	tasmanian devil	e	EN	- Unknown (21598)	05-Feb-2005	sight	Point (492440,5182280) +/- 7m.
1027345	Sarcophilus harrisii	tasmanian devil	e	EN	- Unknown (21598)	08-Feb-2005	sight	Point (492571,5182480) +/- 7m.
1027274	Sarcophilus harrisii	tasmanian devil	e	EN	- Unknown (21598)	22-Mar-2005	sight	Point (492571,5182480) +/- 7m.
1041575	Sarcophilus harrisii	tasmanian devil	e	EN	- Unknown (21598)	06-Oct-2007	car	Point (492571,5182480) +/- 7m.
1041303	Sarcophilus harrisii	tasmanian devil	e	EN	Clare Hawkins (8562)	04-Feb-2005	sight	Point (492066,5182902) +/- 7m.
1036284	Sarcophilus harrisii	tasmanian devil	e	EN	- Unknown (21598)	08-Feb-2005	sight	Point (492171,5183104) +/- 7m.
1042664	Sarcophilus harrisii	tasmanian devil	e	EN	- Unknown (21598)	22-Mar-2005	sight	Point (492171,5183104) +/- 7m.
1033418	Sarcophilus harrisii	tasmanian devil	e	EN	- Unknown (21598)	03-Feb-2005	sight	Point (492941,5183132) +/- 7m.
1027418	Sarcophilus harrisii	tasmanian devil	e	EN	- Unknown (21598)	04-Feb-2005	sight	Point (492941,5183132) +/- 7m.
1031010	Sarcophilus harrisii	tasmanian devil	e	EN	- Unknown (21598)	05-Feb-2005	sight	Point (492941,5183132) +/- 7m.
1028038	Sarcophilus harrisii	tasmanian devil	e	EN	- Unknown (21598)	08-Feb-2005	sight	Point (493073,5183277) +/- 7m.
1026490	Sarcophilus harrisii	tasmanian devil	e	EN	- Unknown (21598)	22-Mar-2005	sight	Point (493073,5183277) +/- 7m.
1033314	Sarcophilus harrisii	tasmanian devil	e	EN	- Unknown (21598)	05-Feb-2005	sight	Point (492587,5183480) +/- 7m.
1033694	Sarcophilus harrisii	tasmanian devil	e	EN	- Unknown (21598)	05-Feb-2005	sight	Point (492333,5183578) +/- 7m.
1029447	Sarcophilus harrisii	tasmanian devil	e	EN	STTD Volunteers (18629)	29-Jan-2005	sight	Point (492333,5183578) +/- 7m.
1029993	Sarcophilus harrisii	tasmanian devil	e	EN	- Unknown (21598)	08-Feb-2005	sight	Point (492705,5183663) +/- 7m.
1033532	Sarcophilus harrisii	tasmanian devil	e	EN	- Unknown (21598)	22-Mar-2005	sight	Point (492705,5183663) +/- 7m.
1028879	Sarcophilus harrisii	tasmanian devil	e	EN	- Unknown (21598)	23-Mar-2005	sight	Point (492705,5183663) +/- 7m.
1030613	Sarcophilus harrisii	tasmanian devil	e	EN	- Unknown (21598)	24-Mar-2005	sight	Point (492705,5183663) +/- 7m.
1043519	Sarcophilus harrisii	tasmanian devil	e	EN	- Unknown (21598)	29-Jan-2005	sight	Point (491302,5182894) +/- 7m.
1030145	Sarcophilus harrisii	tasmanian devil	e	EN	- Unknown (21598)	01-Feb-2005	sight	Point (491302,5182894) +/- 7m.
1037084	Sarcophilus harrisii	tasmanian devil	e	EN	Billie Lazenby (8543)	02-Feb-2005	sight	Point (491302,5182894) +/- 7m.
1036926	Sarcophilus harrisii	tasmanian devil	e	EN	- Unknown (21598)	30-Jan-2005	sight	Point (492066,5182902) +/- 7m.
1041341	Sarcophilus harrisii	tasmanian devil	e	EN	STTD Volunteers (18629)	28-Jan-2005	sight	Point (492066,5182902) +/- 7m.
1026404	Sarcophilus harrisii	tasmanian devil	e	EN	- Unknown (21598)	22-Mar-2005	sight	Point (491158,5183126) +/- 7m.
1025974	Sarcophilus harrisii	tasmanian devil	e	EN	- Unknown (21598)	26-Mar-2005	sight	Point (491158,5183126) +/- 7m.
1027461	Sarcophilus harrisii	tasmanian devil	e	EN	- Unknown (21598)	08-Feb-2005	sight	Point (491158,5183126) +/- 7m.
1030092	Sarcophilus harrisii	tasmanian devil	e	EN	- Unknown (21598)	02-Feb-2005	sight	Point (490324,5182920) +/- 7m.



## Threatened fauna within 5000 metres

Id	Species	Common name	Ss	Ns	Observers	Date	Obs type	Position (gda94)
1042151	Sarcophilus harrisii	tasmanian devil	e	EN	STTD Volunteers (18629)	28-Jan-2005	sight	Point (490324,5182920) +/- 7m.
1027795	Sarcophilus harrisii	tasmanian devil	e	EN	- Unknown (21598)	08-Feb-2005	sight	Point (490455,5183093) +/- 7m.
1030234	Sarcophilus harrisii	tasmanian devil	e	EN	- Unknown (21598)	22-Mar-2005	sight	Point (490455,5183093) +/- 7m.
1160223	Sarcophilus harrisii	tasmanian devil	e	EN	Shannon Troy (12201)	Nov-2009	sight	Point (490123,5183467) +/- 5m.
1160203	Sarcophilus harrisii	tasmanian devil	e	EN	Shannon Troy (12201)	20-Nov-2009	sight	Point (490183,5183670) +/- 5m.
1160210	Sarcophilus harrisii	tasmanian devil	e	EN	Shannon Troy (12201)	23-Nov-2009	sight	Point (490183,5183670) +/- 5m.
1160189	Sarcophilus harrisii	tasmanian devil	e	EN	Shannon Troy (12201)	Dec-2009	fur	Point (490183,5183670) +/- 5m.
1160224	Sarcophilus harrisii	tasmanian devil	e	EN	Shannon Troy (12201)	Nov-2009	sight	Point (490004,5182899) +/- 5m.
1043980	Sarcophilus harrisii	tasmanian devil	e	EN	Billie Lazenby (8543)	03-Feb-2005	sight	Point (492358,5188194) +/- 7m.
1043821	Sarcophilus harrisii	tasmanian devil	e	EN	- Unknown (21598)	31-Jan-2005	sight	Point (492358,5188194) +/- 7m.
1160211	Sarcophilus harrisii	tasmanian devil	e	EN	Shannon Troy (12201)	23-Nov-2009	sight	Point (492657,5188122) +/- 5m.
1160204	Sarcophilus harrisii	tasmanian devil	e	EN	Shannon Troy (12201)	20-Nov-2009	sight	Point (492657,5188122) +/- 5m.
1160208	Sarcophilus harrisii	tasmanian devil	e	EN	Shannon Troy (12201)	21-Nov-2009	sight	Point (492657,5188122) +/- 5m.
1039081	Sarcophilus harrisii	tasmanian devil	e	EN	STTD Volunteers (18629)	29-Jan-2005	sight	Point (492916,5189431) +/- 7m.
1025349	Sarcophilus harrisii	tasmanian devil	e	EN	- Unknown (21598)	31-Jan-2005	sight	Point (492916,5189431) +/- 7m.
1043500	Sarcophilus harrisii	tasmanian devil	e	EN	- Unknown (21598)	02-Feb-2005	sight	Point (492916,5189431) +/- 7m.
1031678	Sarcophilus harrisii	tasmanian devil	e	EN	- Unknown (21598)	29-Jan-2005	sight	Point (492461,5189597) +/- 7m.
1030498	Sarcophilus harrisii	tasmanian devil	e	EN	- Unknown (21598)	01-Feb-2005	sight	Point (492461,5189597) +/- 7m.
1042407	Sarcophilus harrisii	tasmanian devil	e	EN	- Unknown (21598)	31-Jan-2005	sight	Point (492461,5189597) +/- 7m.
1036104	Sarcophilus harrisii	tasmanian devil	e	EN	STTD Volunteers (18629)	28-Jan-2005	sight	Point (492461,5189597) +/- 7m.
1031356	Sarcophilus harrisii	tasmanian devil	e	EN	- Unknown (21598)	22-Mar-2005	sight	Point (493044,5189635) +/- 7m.
1030564	Sarcophilus harrisii	tasmanian devil	e	EN	- Unknown (21598)	22-Mar-2005	sight	Point (492547,5189751) +/- 7m.
1160221	Sarcophilus harrisii	tasmanian devil	e	EN	Shannon Troy (12201)	Nov-2009	sight	Point (492753,5188239) +/- 5m.
1160195	Sarcophilus harrisii	tasmanian devil	e	EN	Shannon Troy (12201)	Dec-2009	fur	Point (492634,5188306) +/- 5m.
1160216	Sarcophilus harrisii	tasmanian devil	e	EN	Shannon Troy (12201)	24-Nov-2009	sight	Point (492634,5188306) +/- 5m.
1160218	Sarcophilus harrisii	tasmanian devil	e	EN	Shannon Troy (12201)	25-Nov-2009	sight	Point (492634,5188306) +/- 5m.
1043680	Sarcophilus harrisii	tasmanian devil	e	EN	Clare Hawkins (8562)	09-Feb-2005	sight	Point (492471,5188384) +/- 7m.
1033332	Sarcophilus harrisii	tasmanian devil	e	EN	- Unknown (21598)	22-Mar-2005	sight	Point (492471,5188384) +/- 7m.
1029673	Sarcophilus harrisii	tasmanian devil	e	EN	- Unknown (21598)	25-Mar-2005	sight	Point (492471,5188384) +/- 7m.
1031764	Sarcophilus harrisii	tasmanian devil	e	EN	- Unknown (21598)	22-Mar-2005	sight	Point (492259,5188443) +/- 7m.
1160194	Sarcophilus harrisii	tasmanian devil	e	EN	Shannon Troy (12201)	Dec-2009	fur	Point (492259,5188445) +/- 5m.
1160207	Sarcophilus harrisii	tasmanian devil	e	EN	Shannon Troy (12201)	21-Nov-2009	sight	Point (492431,5188561) +/- 5m.
1160222	Sarcophilus harrisii	tasmanian devil	e	EN	Shannon Troy (12201)	Nov-2009	sight	Point (492431,5188561) +/- 5m.
1160191	Sarcophilus harrisii	tasmanian devil	e	EN	Shannon Troy (12201)	Dec-2009	fur	Point (492431,5188561) +/- 5m.

## Threatened fauna within 5000 metres

Id	Species	Common name	Ss	Ns	Observers	Date	Obs type	Position (gda94)
1160213	Sarcophilus harrisii	tasmanian devil	e	EN	Shannon Troy (12201)	24-Nov-2009	sight	Point (492259,5188445) +/- 5m.
1037615	Sarcophilus harrisii	tasmanian devil	e	EN	- Unknown (21598)	01-Feb-2005	sight	Point (490963,5187391) +/- 7m.
1035147	Sarcophilus harrisii	tasmanian devil	e	EN	- Unknown (21598)	25-Mar-2005	sight	Point (491540,5188009) +/- 7m.
1032529	Sarcophilus harrisii	tasmanian devil	e	EN	- Unknown (21598)	10-Feb-2005	sight	Point (491540,5188009) +/- 7m.
1043433	Sarcophilus harrisii	tasmanian devil	e	EN	- Unknown (21598)	22-Mar-2005	sight	Point (491540,5188009) +/- 7m.
1035610	Sarcophilus harrisii	tasmanian devil	e	EN	Jim Richey (18587)	24-Mar-2005	sight	Point (491540,5188009) +/- 7m.
1027007	Sarcophilus harrisii	tasmanian devil	e	EN	- Unknown (21598)	11-Feb-2005	sight	Point (491540,5188009) +/- 7m.
1029825	Sarcophilus harrisii	tasmanian devil	e	EN	- Unknown (21598)	26-Mar-2005	sight	Point (491540,5188009) +/- 7m.
1043509	Sarcophilus harrisii	tasmanian devil	e	EN	- Unknown (21598)	05-Feb-2005	sight	Point (492142,5188246) +/- 7m.
1026648	Sarcophilus harrisii	tasmanian devil	e	EN	STTD Volunteers (18629)	29-Jan-2005	sight	Point (492142,5188246) +/- 7m.
1030554	Sarcophilus harrisii	tasmanian devil	e	EN	- Unknown (21598)	30-Jan-2005	sight	Point (492142,5188246) +/- 7m.
1040556	Sarcophilus harrisii	tasmanian devil	e	EN	- Unknown (21598)	01-Feb-2005	sight	Point (492142,5188246) +/- 7m.
1041428	Sarcophilus harrisii	tasmanian devil	e	EN	- Unknown (21598)	03-Feb-2005	sight	Point (492113,5186583) +/- 7m.
1042301	Sarcophilus harrisii	tasmanian devil	e	EN	- Unknown (21598)	04-Feb-2005	sight	Point (492113,5186583) +/- 7m.
1041476	Sarcophilus harrisii	tasmanian devil	e	EN	- Unknown (21598)	01-Feb-2005	sight	Point (492113,5186583) +/- 7m.
1043002	Sarcophilus harrisii	tasmanian devil	e	EN	Clare Hawkins (8562)	08-Feb-2005	sight	Point (492238,5186785) +/- 7m.
1044373	Sarcophilus harrisii	tasmanian devil	e	EN	- Unknown (21598)	22-Mar-2005	sight	Point (492238,5186785) +/- 7m.
1028282	Sarcophilus harrisii	tasmanian devil	e	EN	- Unknown (21598)	03-Feb-2005	sight	Point (491287,5187042) +/- 7m.
1030951	Sarcophilus harrisii	tasmanian devil	e	EN	- Unknown (21598)	05-Feb-2005	sight	Point (491467,5187010) +/- 7m.
1026175	Sarcophilus harrisii	tasmanian devil	e	EN	- Unknown (21598)	02-Feb-2005	sight	Point (491467,5187010) +/- 7m.
1032383	Sarcophilus harrisii	tasmanian devil	e	EN	STTD Volunteers (18629)	29-Jan-2005	sight	Point (491891,5187133) +/- 7m.
1030382	Sarcophilus harrisii	tasmanian devil	e	EN	- Unknown (21598)	05-Feb-2005	sight	Point (491891,5187133) +/- 7m.
1031530	Sarcophilus harrisii	tasmanian devil	e	EN	STTD Volunteers (18629)	30-Jan-2005	sight	Point (491891,5187133) +/- 7m.
1029678	Sarcophilus harrisii	tasmanian devil	e	EN	- Unknown (21598)	22-Mar-2005	sight	Point (491996,5187315) +/- 7m.
1042227	Sarcophilus harrisii	tasmanian devil	e	EN	- Unknown (21598)	06-Feb-2005	sight	Point (491197,5186101) +/- 7m.
1043567	Sarcophilus harrisii	tasmanian devil	e	EN	- Unknown (21598)	05-Feb-2005	sight	Point (491197,5186101) +/- 7m.
1044452	Sarcophilus harrisii	tasmanian devil	e	EN	- Unknown (21598)	05-Feb-2005	sight	Point (491371,5185970) +/- 7m.
1038077	Sarcophilus harrisii	tasmanian devil	e	EN	- Unknown (21598)	31-Jan-2005	sight	Point (491371,5185970) +/- 7m.
1026545	Sarcophilus harrisii	tasmanian devil	e	EN	- Unknown (21598)	06-Feb-2005	sight	Point (491716,5185933) +/- 7m.
1039422	Sarcophilus harrisii	tasmanian devil	e	EN	- Unknown (21598)	02-Feb-2005	sight	Point (491716,5185933) +/- 7m.
1039694	Sarcophilus harrisii	tasmanian devil	e	EN	- Unknown (21598)	31-Jan-2005	sight	Point (492153,5185778) +/- 7m.
1043694	Sarcophilus harrisii	tasmanian devil	e	EN	Billie Lazenby (8543)	02-Feb-2005	sight	Point (492153,5185778) +/- 7m.
1036113	Sarcophilus harrisii	tasmanian devil	e	EN	Clare Hawkins (8562)	10-Feb-2005	sight	Point (492286,5185961) +/- 7m.
1032710	Sarcophilus harrisii	tasmanian devil	e	EN	- Unknown (21598)	22-Mar-2005	sight	Point (492286,5185961) +/- 7m.

## Threatened fauna within 5000 metres

Id	Species	Common name	Ss	Ns	Observers	Date	Obs type	Position (gda94)
1039604	Sarcophilus harrisii	tasmanian devil	e	EN	- Unknown (21598)	22-Mar-2005	sight	Point (492435,5183772) +/- 7m.
1025962	Sarcophilus harrisii	tasmanian devil	e	EN	Jim Richey (18587)	25-Mar-2005	sight	Point (492435,5183772) +/- 7m.
1027830	Sarcophilus harrisii	tasmanian devil	e	EN	- Unknown (21598)	08-Feb-2005	sight	Point (492435,5183772) +/- 7m.
1028329	Sarcophilus harrisii	tasmanian devil	e	EN	- Unknown (21598)	24-Mar-2005	sight	Point (492435,5183772) +/- 7m.
1075599	Tyto novaehollandiae	masked owl	pe	PVU	Michael Kenneth Todd (10621)	09-Jul-2008	sight	Point (490590,5188976) +/- 10m.

### Unverified Records

## Threatened fauna within 5000 metres (based on Habitat Mapping)

Species	Common name	Ss	Ns	Potential	Known	Core
Lissotes menalcas	mt. mangana stag beetle	v		1	0	0
Aquila audax	wedge-tailed eagle	pe	PEN	1	0	0
Perameles gunnii	eastern barred bandicoot		VU	1	0	0
Lathamus discolor	swift parrot	e	EN	19	9	9
Litoria raniformis	green and golden frog	v	VU	1	0	0
Tyto novaehollandiae	masked owl	pe	PVU	1	0	1
Pardalotus quadragintus	forty-spotted pardalote	e	EN	1	0	0
Haliaeetus leucogaster	white-bellied sea-eagle	v		1	0	0
Accipiter novaehollandiae	grey goshawk	e		1	0	1

For more information about threatened species, please contact the Manager, Threatened Species Section.

Telephone: (03) 6233 8759

Email: [ThreatenedSpecies.Enquiries@dpipwe.tas.gov.au](mailto:ThreatenedSpecies.Enquiries@dpipwe.tas.gov.au)

Address: GPO Box 44, Hobart, Tasmania, Australia, 7000



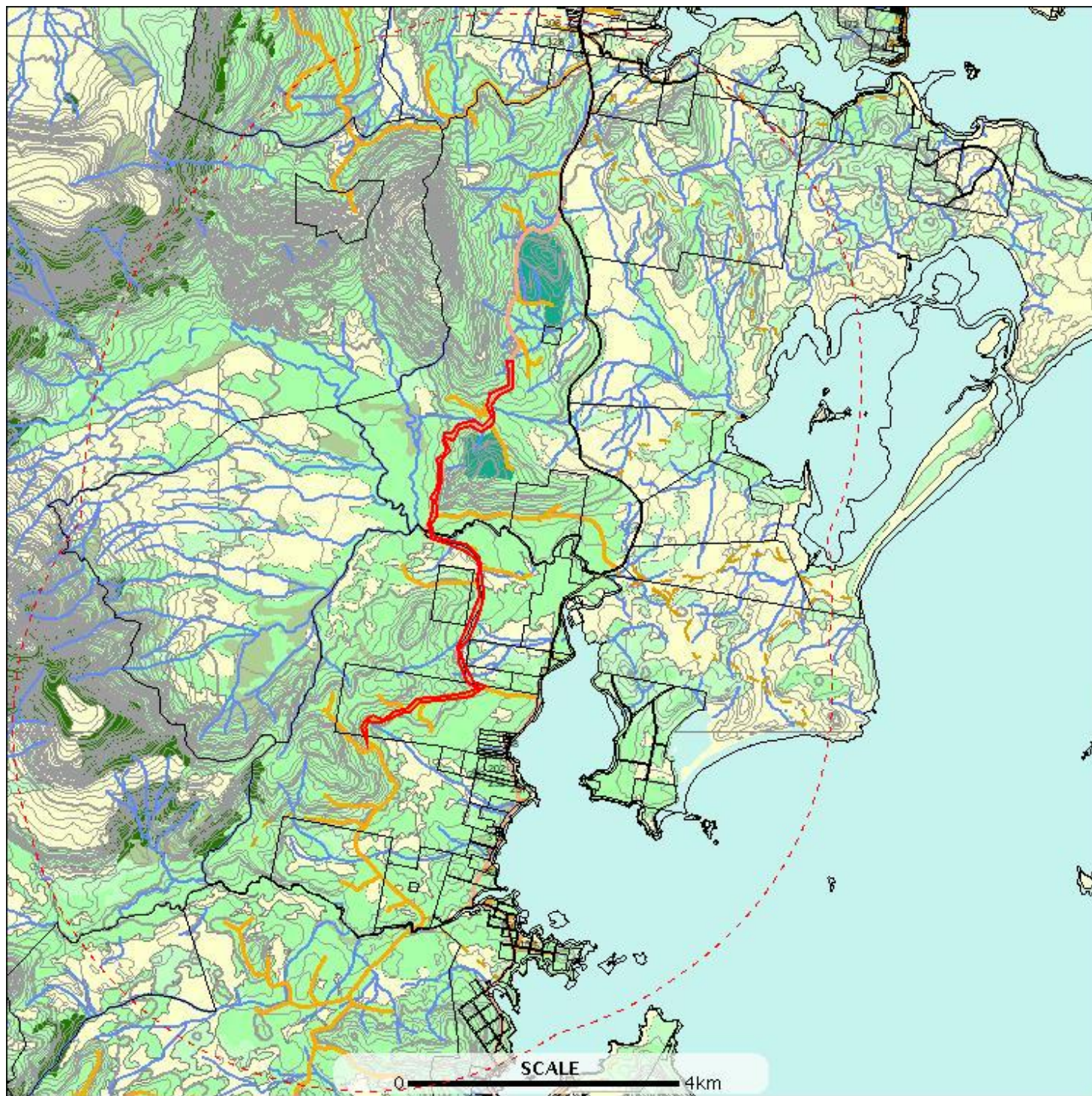
## Raptor nests and sightings within 500 metres

\*\*\* No Raptor nests or sightings found within 500 metres. \*\*\*

## Raptor nests and sightings within 5000 metres

E: 483941  
N: 5190433

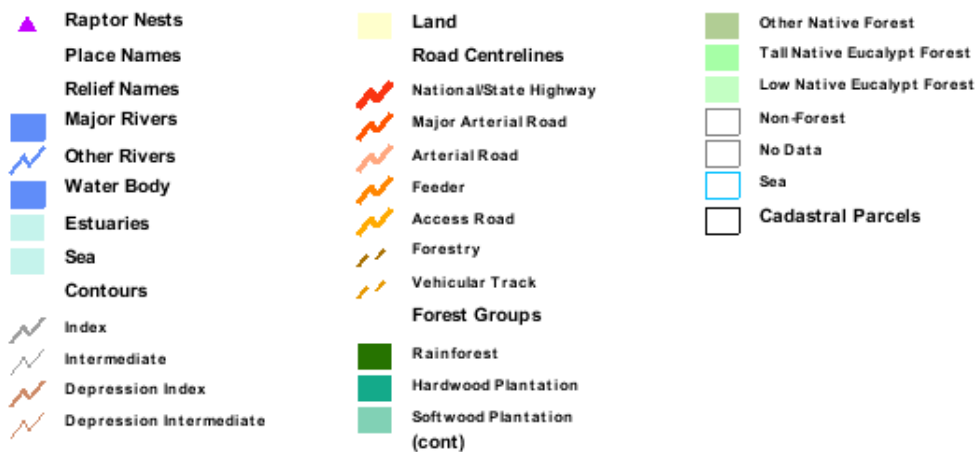
E: 496329  
N: 5190433



E: 483941  
N: 5174750

E: 496329  
N: 5174750

## Raptor nests and sightings within 5000 metres





## Raptor nests and sightings within 5000 metres

### Verified Records

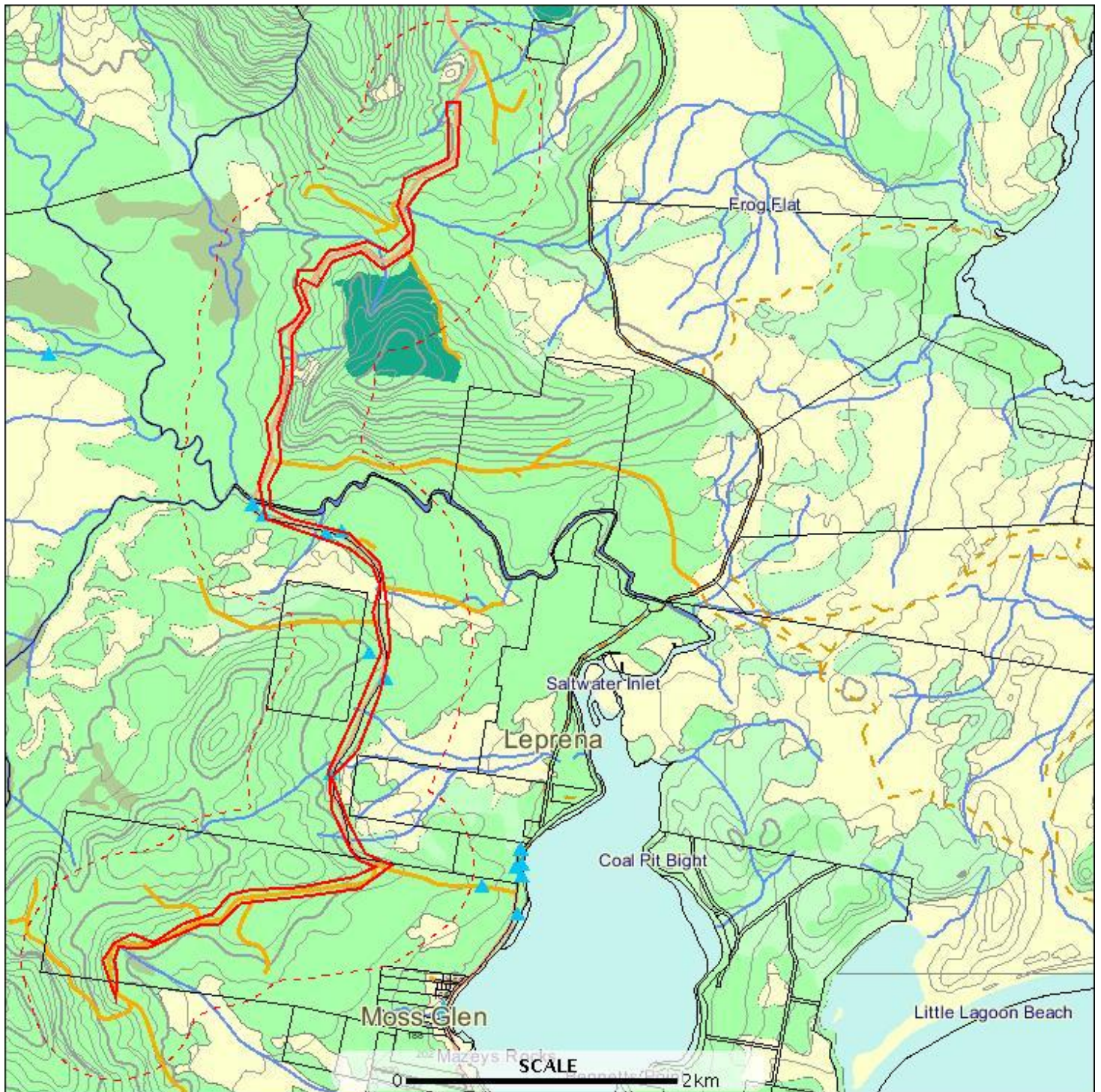
Location id	Location foreign id	Observation id	Observer	Obs date	Obs type	Position (gda94)	Season	Nest productivity	Nest occupancy
		1083932	Veronica Tyquin (20991)	28-Oct-2009	nest	Point (492250,5183170) +/- 0m.			

### Unverified Records

# Tas Management Act Weeds within 500 m

E: 488442  
N: 5185933

E: 491830  
N: 5185933



E: 488442  
N: 5179250

E: 491830  
N: 5179250

# Tas Management Act Weeds within 500 m





## Tas Management Act Weeds within 500 m

### Verified Records

Id	Species	Common name	Observers	Date	Position (gda94)	Location	Obs state	Wma	Wons density	Data source
525271	Carex flagellifera	weeping sedge	Nepelle Temby (7060)	02-Mar-2005	Point (489961,5182861) +/- 15m.	D'Entrecasteaux River	Present	Yes		
284973	Carex flagellifera	weeping sedge	A.E. Orchard (3741)	26-Jan-1981	Point (490412,5182683) +/- 2000m.	D'Entrecasteaux River at crossing of South Cape Road	Present	Yes		
525248	Carex flagellifera	weeping sedge	Nepelle Temby (7060)	02-Mar-2005	Point (490032,5182796) +/- 15m.	Lune River Rd	Present	Yes		
1170600	Coprosma robusta	karamu	- Unknown (21598)	12-Sep-2007	Point (490678,5181951) +/- 1m.		Present	Yes	7	Herbarium
1002830	Erica lusitanica	spanish heath	Michael Rowland (1732), Cassandra Strain (6044)	12-Sep-2007	Point (490509,5182697) +/- 10m.	South Cape Road	Present	Yes		
1004729	Rubus fruticosus	blackberry	Michael Rowland (1732), Cassandra Strain (6044)	12-Sep-2007	Point (490438,5181208) +/- 10m.	Cockle Creek Road	Present	Yes		
1005485	Ulex europaeus	gorse	Michael Rowland (1732), Cassandra Strain (6044)	12-Sep-2007	Point (490776,5181797) +/- 10m.	Cockle Creek Road	Present	Yes		

### Unverified Records

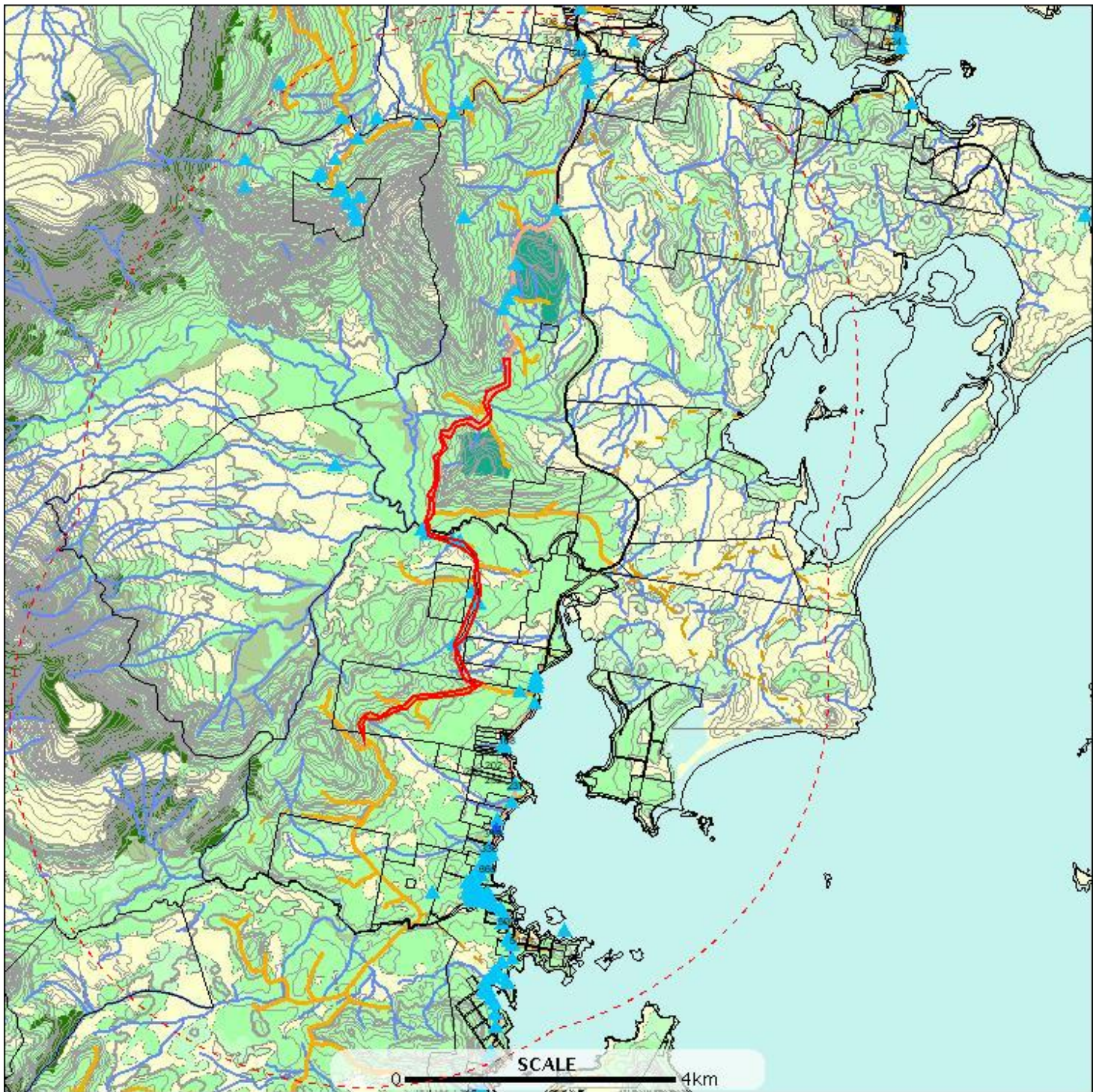
For more information about introduced weed species, please visit the following URL for contact details in your area.

<http://www.dpipwe.tas.gov.au/inter.nsf/WebPages/TPRY-52J8Z3?open>

# Tas Management Act Weeds within 5000 m

E: 483941  
N: 5190433

E: 496329  
N: 5190433



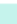





E: 483941  
N: 5174750

E: 496329  
N: 5174750



# Tas Management Act Weeds within 5000 m

	<b>Weeds Watch List Point</b>		Depression Index		Softwood Plantation
	Priority Weeds		Depression Intermediate		Other Native Forest
	<b>Weeds Management Act</b>		Land		Tall Native Eucalypt Forest
	<b>Place Names</b>		Road Centrelines		Low Native Eucalypt Forest
	<b>Relief Names</b>		National/State Highway		Non-Forest
	Major Rivers		Major Arterial Road		No Data
	Other Rivers		Arterial Road		Sea
	Water Body		Feeder		Cadastral Parcels
	Estuaries		Access Road		
	Sea		Forestry		
	<b>Contours</b>		Vehicular Track		
	Index		<b>Forest Groups</b>		
	Intermediate		Rainforest		
<b>(cont)</b>			Hardwood Plantation		
		<b>(cont)</b>			



# Tas Management Act Weeds within 5000 m

## Verified Records

Id	Species	Common name	Observers	Date	Position (gda94)	Location	Obs state	Wma	Wons density	Data source
285640	Carex flagellifera	weeping sedge	- Unknown (21598)	30-Apr-1988	Point (488712,5183783) +/- 2000m.	D Entrecasteaux River bridge	Present	Yes		
525269	Carex flagellifera	weeping sedge	Nepelle Temby (7060)	03-Mar-2005	Point (489069,5187647) +/- 15m.	South Lune Quarry	Present	Yes		
525250	Carex flagellifera	weeping sedge	Nepelle Temby (7060)	02-Mar-2005	Point (490413,5188853) +/- 15m.	South Lune Rd	Present	Yes		
525270	Carex flagellifera	weeping sedge	Nepelle Temby (7060)	03-Mar-2005	Point (488456,5187937) +/- 15m.	Mystery Caves track	Present	Yes		
938481	Carex flagellifera	weeping sedge	Nepelle Temby (7060)	03-Dec-2003	Point (490563,5187353) +/- 1000m.		Present	Yes		
284973	Carex flagellifera	weeping sedge	A.E. Orchard (3741)	26-Jan-1981	Point (490412,5182683) +/- 2000m.	D'Entrecasteaux River at crossing of South Cape Road	Present	Yes		
534848	Carex flagellifera	weeping sedge	Nepelle Temby (7060)	02-Mar-2005	Point (489033,5188480) +/- 15m.	South Lune Rd	Present	Yes		
285639	Carex flagellifera	weeping sedge	- Unknown (21598)	25-Feb-1986	Point (488712,5183783) +/- 2000m.	D'Entrecasteaux River crossing on Ida Bay-Catamaran Road	Present	Yes		
525268	Carex flagellifera	weeping sedge	Nepelle Temby (7060)	03-Mar-2005	Point (488985,5187424) +/- 15m.	South Lune Quarry	Present	Yes		
525267	Carex flagellifera	weeping sedge	Nepelle Temby (7060)	03-Mar-2005	Point (488814,5187772) +/- 15m.	South Lune Quarry	Present	Yes		
525271	Carex flagellifera	weeping sedge	Nepelle Temby (7060)	02-Mar-2005	Point (489961,5182861) +/- 15m.	D'Entrecasteaux River	Present	Yes		
525251	Carex flagellifera	weeping sedge	Nepelle Temby (7060)	02-Mar-2005	Point (490612,5188995) +/- 15m.	South Lune Rd	Present	Yes		
534852	Carex flagellifera	weeping sedge	Nepelle Temby (7060)	03-Mar-2005	Point (489020,5187305) +/- 15m.	South Lune Quarry	Present	Yes		
525249	Carex flagellifera	weeping sedge	Nepelle Temby (7060)	02-Mar-2005	Point (491284,5186293) +/- 15m.	Lune River Rd	Present	Yes		
913893	Carex flagellifera	weeping sedge	David Ziegeler (7381)	Apr-1989	Point (489312,5188783) +/- 500m.		Present	Yes		
914628	Carex flagellifera	weeping sedge	David Ziegeler (7381)	Apr-1989	Point (488712,5188183) +/- 500m.		Present	Yes		
525248	Carex flagellifera	weeping sedge	Nepelle Temby (7060)	02-Mar-2005	Point (490032,5182796) +/- 15m.	Lune River Rd	Present	Yes		
1170599	Coprosma robusta	karamu	- Unknown (21598)	2007	Point (491576.1444,5180639.7519) +/- -1m.		Present	Yes	7	NRM South Coastal Weed Mapping Project
1170600	Coprosma robusta	karamu	- Unknown (21598)	12-Sep-2007	Point (490678,5181951) +/- -1m.		Present	Yes	7	Herbarium
1001654	Coprosma robusta	karamu	Michael Rowland (1732), Cassandra Strain (6044)	12-Sep-2007	Point (491611,5180660) +/- 10m.	Leprena Track	Present	Yes		
1001668	Cortaderia seloana	white pampas grass	Michael Rowland (1732), Cassandra Strain (6044)	12-Sep-2007	Point (491368,5180524) +/- 10m.	Cockle Creek Road	Present	Yes		

## Tas Management Act Weeds within 5000 m

Id	Species	Common name	Observers	Date	Position (gda94)	Location	Obs state	Wma	Wons density	Data source
1170602	Cortaderia sp.	pampas grass	- Unknown (21598)	2008	Point (488913.4881,5187540.4573) +/- -1m.		Present	Yes	7	Biolinks
1170606	Cortaderia sp.	pampas grass	- Unknown (21598)	2008	Point (488898.8435,5187591.5199) +/- -1m.		Present	Yes	7	Biolinks
1170607	Cortaderia sp.	pampas grass	- Unknown (21598)	2008	Point (488740.2125,5187737.298) +/- -1m.		Present	Yes	7	Biolinks
914381	Cytisus scoparius	english broom	Paul Dimmick (3114)	05-Jul-1999	Point (490712,5177583) +/- 50m.		Present	Yes		
1002824	Erica lusitanica	spanish heath	Michael Rowland (1732), Cassandra Strain (6044)	12-Sep-2007	Point (492318,5189584) +/- 10m.	South Cape Road	Present	Yes		
1002827	Erica lusitanica	spanish heath	Michael Rowland (1732), Cassandra Strain (6044)	12-Sep-2007	Point (492343,5189345) +/- 10m.	South Cape Road	Present	Yes		
1002828	Erica lusitanica	spanish heath	Michael Rowland (1732), Cassandra Strain (6044)	12-Sep-2007	Point (492371,5189140) +/- 10m.	South Cape Road	Present	Yes		
1002832	Erica lusitanica	spanish heath	Michael Rowland (1732), Cassandra Strain (6044)	12-Sep-2007	Point (490839,5178078) +/- 10m.	Cockle Creek	Present	Yes		
1002826	Erica lusitanica	spanish heath	Michael Rowland (1732), Cassandra Strain (6044)	12-Sep-2007	Point (492326,5189453) +/- 10m.	South Cape Road	Present	Yes		
1002831	Erica lusitanica	spanish heath	Michael Rowland (1732), Cassandra Strain (6044)	12-Sep-2007	Point (490887,5178135) +/- 10m.	Cockle Creek Road	Present	Yes		
1002825	Erica lusitanica	spanish heath	Michael Rowland (1732), Cassandra Strain (6044)	12-Sep-2007	Point (492331,5189530) +/- 10m.	South Cape Road	Present	Yes		
1002823	Erica lusitanica	spanish heath	Michael Rowland (1732), Cassandra Strain (6044)	12-Sep-2007	Point (492239,5189840) +/- 10m.	South Cape Road	Present	Yes		
1002829	Erica lusitanica	spanish heath	Michael Rowland (1732), Cassandra Strain (6044)	12-Sep-2007	Point (491202,5186176) +/- 10m.	South Cape Road	Present	Yes		
1002830	Erica lusitanica	spanish heath	Michael Rowland (1732), Cassandra Strain (6044)	12-Sep-2007	Point (490509,5182697) +/- 10m.	South Cape Road	Present	Yes		
915221	Genista monspessulana	canary broom	Paul Dimmick (3114)	05-Jul-1999	Point (491012,5176033) +/- 50m.		Present	Yes		
1003271	Genista monspessulana	canary broom	Michael Rowland (1732), Cassandra Strain (6044)	12-Sep-2007	Point (490872,5176173) +/- 10m.	Cockle Creek	Present	Yes		
589409	Genista monspessulana	canary broom	David Ziegeler (7381)	23-Jun-2004	Point (490730,5177520) +/- 50m.		Present	Yes		
1003265	Genista monspessulana	canary broom	Michael Rowland (1732), Cassandra Strain (6044)	12-Sep-2007	Point (492266,5189750) +/- 10m.	South Cape Road	Present	Yes		
914378	Genista monspessulana	canary broom	Paul Dimmick (3114)	05-Jul-1999	Point (490112,5177633) +/- 100m.		Present	Yes		
914689	Genista monspessulana	canary broom	David Ziegeler (7381)	Apr-1989	Point (490912,5176183) +/- 500m.		Present	Yes		
1003270	Genista monspessulana	canary broom	Michael Rowland (1732), Cassandra Strain (6044)	12-Sep-2007	Point (490712,5177505) +/- 10m.	Cockle Creek Road	Present	Yes		

## Tas Management Act Weeds within 5000 m

Id	Species	Common name	Observers	Date	Position (gda94)	Location	Obs state	Wma	Wons density	Data source
914630	Genista monspessulana	canary broom	David Ziegeler (7381)	Apr-1989	Point (488812,5188783) +/- 500m.		Present	Yes		
1003266	Genista monspessulana	canary broom	Michael Rowland (1732), Cassandra Strain (6044)	12-Sep-2007	Point (491255,5178926) +/- 10m.	Cockle Creek Road	Present	Yes		
1003267	Genista monspessulana	canary broom	Michael Rowland (1732), Cassandra Strain (6044)	12-Sep-2007	Point (490925,5178277) +/- 10m.	Cockle Creek Road	Present	Yes		
914411	Genista monspessulana	canary broom	Paul Dimmick (3114)	05-Jul-1999	Point (491012,5175883) +/- 50m.		Present	Yes		
1003272	Genista monspessulana	canary broom	Michael Rowland (1732), Cassandra Strain (6044)	12-Sep-2007	Point (490949,5176091) +/- 10m.	Cockle Creek	Present	Yes		
1003268	Genista monspessulana	canary broom	Michael Rowland (1732), Cassandra Strain (6044)	12-Sep-2007	Point (490885,5178217) +/- 10m.	Cockle Creek Road	Present	Yes		
1003269	Genista monspessulana	canary broom	Michael Rowland (1732), Cassandra Strain (6044)	12-Sep-2007	Point (490671,5177722) +/- 10m.	Cockle Creek Road	Present	Yes		
1170615	Leycesteria formosa	elisha's tears or himalayan honeysuckle	- Unknown (21598)	2007	Point (491192.6632,5176332.4736) +/- -1m.		Present	Yes	7	NRM South Coastal Weed Mapping Project
915183	Leycesteria formosa	elisha's tears or himalayan honeysuckle	Paul Dimmick (3114)	05-Jul-1999	Point (490712,5177733) +/- 50m.		Present	Yes		
1170618	Leycesteria formosa	elisha's tears or himalayan honeysuckle	- Unknown (21598)	2008	Point (490664.214,5177648.9891) +/- -1m.		Present	Yes	7	Biolinks
1170619	Leycesteria formosa	elisha's tears or himalayan honeysuckle	- Unknown (21598)	2008	Point (490657.6529,5177662.3071) +/- -1m.		Present	Yes	7	Biolinks
1170620	Leycesteria formosa	elisha's tears or himalayan honeysuckle	- Unknown (21598)	2008	Point (490648.3483,5177673.6222) +/- -1m.		Present	Yes	7	Biolinks
1170621	Leycesteria formosa	elisha's tears or himalayan honeysuckle	- Unknown (21598)	2007	Point (490707.956,5177710.833) +/- -1m.		Present	Yes	7	NRM South Coastal Weed Mapping Project
1170622	Leycesteria formosa	elisha's tears or himalayan honeysuckle	- Unknown (21598)	2008	Point (490701.4182,5177788.8648) +/- -1m.		Present	Yes	7	Biolinks
1170624	Leycesteria formosa	elisha's tears or himalayan honeysuckle	- Unknown (21598)	2008	Point (490684.7746,5177850.0357) +/- -1m.		Present	Yes	7	Biolinks
1003712	Leycesteria formosa	elisha's tears or himalayan honeysuckle	Michael Rowland (1732), Cassandra Strain (6044)	12-Sep-2007	Point (490707,5177867) +/- 10m.	Cockle Creek Road	Present	Yes		
915185	Leycesteria formosa	elisha's tears or himalayan honeysuckle	Paul Dimmick (3114)	05-Jul-1999	Point (490712,5177833) +/- 100m.		Present	Yes		
1003714	Leycesteria formosa	elisha's tears or himalayan honeysuckle	Michael Rowland (1732), Cassandra Strain (6044)	12-Sep-2007	Point (490662,5177738) +/- 10m.	Cockle Creek Road	Present	Yes		
257501	Leycesteria formosa	elisha's tears or himalayan honeysuckle	A.M. Buchanan (3758)	02-Feb-1996	Point (490612,5177783) +/- 100m.	Catamaran	Present	Yes		
1003713	Leycesteria formosa	elisha's tears or himalayan honeysuckle	Michael Rowland (1732), Cassandra Strain (6044)	12-Sep-2007	Point (490695,5177847) +/- 10m.	Cockle Creek Road	Present	Yes		
1003717	Leycesteria formosa	elisha's tears or himalayan honeysuckle	Michael Rowland (1732), Cassandra Strain (6044)	12-Sep-2007	Point (490988,5176410) +/- 10m.	Cockle Creek Road	Present	Yes		



## Tas Management Act Weeds within 5000 m

Id	Species	Common name	Observers	Date	Position (gda94)	Location	Obs state	Wma	Wons density	Data source
285129	Leycesteria formosa	elisha's tears or himalayan honeysuckle	A.E. Orchard (3741)	26-Jan-1981	Point (492012,5177083) +/- 2000m.	Everalls Point c. 3 km from Cockle Creek	Present	Yes		
1003716	Leycesteria formosa	elisha's tears or himalayan honeysuckle	Michael Rowland (1732), Cassandra Strain (6044)	12-Sep-2007	Point (490877,5177607) +/- 10m.	Cockle Creek Road	Present	Yes		
1003715	Leycesteria formosa	elisha's tears or himalayan honeysuckle	Michael Rowland (1732), Cassandra Strain (6044)	12-Sep-2007	Point (490887,5177522) +/- 10m.	Cockle Creek Road	Present	Yes		
1170616	Leycesteria formosa	elisha's tears or himalayan honeysuckle	- Unknown (21598)	2007	Point (490888,5564,5177590.2326) +/- -1m.		Present	Yes	7	NRM South Coastal Weed Mapping Project
841289	Rubus fruticosus	blackberry	- Unknown (21598)	18-Apr-1988?	Point (493012,5189883) +/- 100m.		Present	Yes		
915218	Rubus fruticosus	blackberry	Paul Dimmick (3114)	05-Jul-1999	Point (490912,5177983) +/- 10m.		Present	Yes		
1004737	Rubus fruticosus	blackberry	Michael Rowland (1732), Cassandra Strain (6044)	12-Sep-2007	Point (491026,5175709) +/- 10m.	Cockle Creek	Present	Yes		
914383	Rubus fruticosus	blackberry	Paul Dimmick (3114)	05-Jul-1999	Point (490712,5177733) +/- 50m.		Present	Yes		
914407	Rubus fruticosus	blackberry	Paul Dimmick (3114)	05-Jul-1999	Point (490912,5177633) +/- 50m.		Present	Yes		
915186	Rubus fruticosus	blackberry	Paul Dimmick (3114)	05-Jul-1999	Point (490712,5177833) +/- 50m.		Present	Yes		
914404	Rubus fruticosus	blackberry	Paul Dimmick (3114)	05-Jul-1999	Point (490897,5177583) +/- 10m.		Present	Yes		
915222	Rubus fruticosus	blackberry	Paul Dimmick (3114)	05-Jul-1999	Point (491012,5176033) +/- 50m.		Present	Yes		
1004729	Rubus fruticosus	blackberry	Michael Rowland (1732), Cassandra Strain (6044)	12-Sep-2007	Point (490438,5181208) +/- 10m.	Cockle Creek Road	Present	Yes		
914406	Rubus fruticosus	blackberry	Paul Dimmick (3114)	05-Jul-1999	Point (490912,5176383) +/- 100m.		Present	Yes		
915248	Rubus fruticosus	blackberry	Paul Dimmick (3114)	05-Jul-1999	Point (491262,5176683) +/- 50m.		Present	Yes		
1004743	Rubus fruticosus	blackberry	Michael Rowland (1732), Cassandra Strain (6044)	12-Sep-2007	Point (491605,5180750) +/- 10m.	Leprena Track	Present	Yes		
915220	Rubus fruticosus	blackberry	Paul Dimmick (3114)	05-Jul-1999	Point (491012,5175883) +/- 50m.		Present	Yes		
913859	Rubus fruticosus	blackberry	David Ziegeler (7381)	Apr-1989	Point (487412,5187783) +/- 500m.		Present	Yes		
914402	Rubus fruticosus	blackberry	Paul Dimmick (3114)	05-Jul-1999	Point (490887,5177533) +/- 10m.		Present	Yes		
914405	Rubus fruticosus	blackberry	Paul Dimmick (3114)	05-Jul-1999	Point (490912,5176233) +/- 50m.		Present	Yes		
516933	Rubus fruticosus	blackberry	Jamie Kirkpatrick (1315)	Jun-1986	Point (491612,5180583) +/- 100m.		Present	Yes		
1004731	Rubus fruticosus	blackberry	Michael Rowland (1732), Cassandra Strain (6044)	12-Sep-2007	Point (491303,5179186) +/- 10m.	Cockle Creek Road	Present	Yes		

## Tas Management Act Weeds within 5000 m

Id	Species	Common name	Observers	Date	Position (gda94)	Location	Obs state	Wma	Wons density	Data source
589356	Rubus fruticosus	blackberry	David Ziegeler (7381)	23-Jun-2004	Point (490650,5177520) +/- 50m.		Present	Yes		
915181	Rubus fruticosus	blackberry	Paul Dimmick (3114)	05-Jul-1999	Point (490662,5177633) +/- 50m.		Present	Yes		
1004735	Rubus fruticosus	blackberry	Michael Rowland (1732), Cassandra Strain (6044)	12-Sep-2007	Point (491096,5177414) +/- 10m.	Cockle Creek Road	Present	Yes		
915188	Rubus fruticosus	blackberry	Paul Dimmick (3114)	05-Jul-1999	Point (490762,5177683) +/- 50m.		Present	Yes		
915224	Rubus fruticosus	blackberry	Paul Dimmick (3114)	05-Jul-1999	Point (491062,5176483) +/- 50m.		Present	Yes		
914432	Rubus fruticosus	blackberry	Paul Dimmick (3114)	05-Jul-1999	Point (491262,5176883) +/- 50m.		Present	Yes		
1004733	Rubus fruticosus	blackberry	Michael Rowland (1732), Cassandra Strain (6044)	12-Sep-2007	Point (490735,5177910) +/- 10m.	Cockle Creek Road	Present	Yes		
914576	Rubus fruticosus	blackberry	David Ziegeler (7381)	Apr-1989	Point (487412,5188183) +/- 500m.		Present	Yes		
913872	Rubus fruticosus	blackberry	David Ziegeler (7381)	Apr-1989	Point (488512,5187983) +/- 500m.		Present	Yes		
1004734	Rubus fruticosus	blackberry	Michael Rowland (1732), Cassandra Strain (6044)	12-Sep-2007	Point (490656,5177781) +/- 10m.	Cockle Creek Road	Present	Yes		
1004736	Rubus fruticosus	blackberry	Michael Rowland (1732), Cassandra Strain (6044)	12-Sep-2007	Point (491155,5177303) +/- 10m.	Cockle Creek Road	Present	Yes		
915246	Rubus fruticosus	blackberry	Paul Dimmick (3114)	05-Jul-1999	Point (491162,5176383) +/- 50m.		Present	Yes		
915191	Rubus fruticosus	blackberry	Paul Dimmick (3114)	05-Jul-1999	Point (490772,5177683) +/- 10m.		Present	Yes		
914385	Rubus fruticosus	blackberry	Paul Dimmick (3114)	05-Jul-1999	Point (490812,5177883) +/- 50m.		Present	Yes		
915243	Rubus fruticosus	blackberry	Paul Dimmick (3114)	05-Jul-1999	Point (491112,5177183) +/- 100m.		Present	Yes		
915219	Rubus fruticosus	blackberry	Paul Dimmick (3114)	05-Jul-1999	Point (490962,5178183) +/- 10m.		Present	Yes		
843232	Rubus fruticosus	blackberry	- Unknown (21598)	05-Feb-1985?	Point (490962,5175283) +/- 100m.		Present	Yes		
1004728	Rubus fruticosus	blackberry	Michael Rowland (1732), Cassandra Strain (6044)	12-Sep-2007	Point (491140,5186023) +/- 10m.	South Cape Road	Present	Yes		
915193	Rubus fruticosus	blackberry	Paul Dimmick (3114)	05-Jul-1999	Point (490812,5177633) +/- 100m.		Present	Yes		
915225	Rubus fruticosus	blackberry	Paul Dimmick (3114)	05-Jul-1999	Point (491112,5176633) +/- 100m.		Present	Yes		
914408	Rubus fruticosus	blackberry	Paul Dimmick (3114)	05-Jul-1999	Point (490962,5176433) +/- 50m.		Present	Yes		
915223	Rubus fruticosus	blackberry	Paul Dimmick (3114)	05-Jul-1999	Point (491012,5176483) +/- 50m.		Present	Yes		
1004727	Rubus fruticosus	blackberry	Michael Rowland (1732), Cassandra Strain (6044)	12-Sep-2007	Point (491890,5187453) +/- 10m.	South Cape Road	Present	Yes		

## Tas Management Act Weeds within 5000 m

Id	Species	Common name	Observers	Date	Position (gda94)	Location	Obs state	Wma	Wons density	Data source
914429	Rubus fruticosus	blackberry	Paul Dimmick (3114)	05-Jul-1999	Point (491212,5176933) +/- 100m.		Present	Yes		
915162	Rubus fruticosus	blackberry	Paul Dimmick (3114)	05-Jul-1999	Point (490612,5177633) +/- 50m.		Present	Yes		
915216	Rubus fruticosus	blackberry	Paul Dimmick (3114)	05-Jul-1999	Point (490912,5177483) +/- 100m.		Present	Yes		
1004730	Rubus fruticosus	blackberry	Michael Rowland (1732), Cassandra Strain (6044)	12-Sep-2007	Point (491585,5180353) +/- 10m.	Cockle Creek Road	Present	Yes		
914430	Rubus fruticosus	blackberry	Paul Dimmick (3114)	05-Jul-1999	Point (491212,5176983) +/- 100m.		Present	Yes		
1004732	Rubus fruticosus	blackberry	Michael Rowland (1732), Cassandra Strain (6044)	12-Sep-2007	Point (491046,5178675) +/- 10m.	Cockle Creek Road	Present	Yes		
915244	Rubus fruticosus	blackberry	Paul Dimmick (3114)	05-Jul-1999	Point (491112,5177383) +/- 100m.		Present	Yes		
915180	Rubus fruticosus	blackberry	Paul Dimmick (3114)	05-Jul-1999	Point (490662,5177583) +/- 50m.		Present	Yes		
508070	Rubus fruticosus	blackberry	Jamie Kirkpatrick (1315)	Jun-1986	Point (491312,5186683) +/- 100m.		Present	Yes		
1004738	Rubus fruticosus	blackberry	Michael Rowland (1732), Cassandra Strain (6044)	12-Sep-2007	Point (490955,5175349) +/- 10m.	Cockle Creek	Present	Yes		
915182	Rubus fruticosus	blackberry	Paul Dimmick (3114)	05-Jul-1999	Point (490712,5177583) +/- 50m.		Present	Yes		
914400	Rubus fruticosus	blackberry	Paul Dimmick (3114)	05-Jul-1999	Point (490862,5176333) +/- 50m.		Present	Yes		
914690	Rubus fruticosus	blackberry	David Ziegeler (7381)	Apr-1989	Point (490912,5177583) +/- 500m.		Present	Yes		
914412	Rubus fruticosus	blackberry	Paul Dimmick (3114)	05-Jul-1999	Point (491012,5177433) +/- 100m.		Present	Yes		
915192	Rubus fruticosus	blackberry	Paul Dimmick (3114)	05-Jul-1999	Point (490812,5177583) +/- 50m.		Present	Yes		
914414	Salix Xfragilis var. fragilis	crack willow	Paul Dimmick (3114)	30-Jul-1999	Point (491132,5179783) +/- 50m.		Present	Yes		
1170801	Senecio jacobaea	ragwort	- Unknown (21598)	2008	Point (489917.0929,5188688.7069) +/- -1m.		Present	Yes	7	Biolinks
915214	Ulex europaeus	gorse	Paul Dimmick (3114)	05-Jul-1999	Point (490887,5177533) +/- 10m.		Present	Yes		
915163	Ulex europaeus	gorse	Paul Dimmick (3114)	05-Jul-1999	Point (490612,5177633) +/- 50m.		Present	Yes		
583581	Ulex europaeus	gorse	David Ziegeler (7381)	23-Jun-2004	Point (490730,5177520) +/- 50m.		Present	Yes		
914384	Ulex europaeus	gorse	Paul Dimmick (3114)	05-Jul-1999	Point (490812,5177583) +/- 50m.		Present	Yes		
1005487	Ulex europaeus	gorse	Michael Rowland (1732), Cassandra Strain (6044)	12-Sep-2007	Point (490776,5177528) +/- 10m.	Cockle Creek Road	Present	Yes		
1005490	Ulex europaeus	gorse	Michael Rowland (1732), Cassandra Strain (6044)	12-Sep-2007	Point (490859,5176235) +/- 10m.	Cockle Creek	Present	Yes		



## Tas Management Act Weeds within 5000 m

Id	Species	Common name	Observers	Date	Position (gda94)	Location	Obs state	Wma	Wons density	Data source
914410	Ulex europaeus	gorse	Paul Dimmick (3114)	05-Jul-1999	Point (490962,5178183) +/- 10m.		Present	Yes		
1005491	Ulex europaeus	gorse	Michael Rowland (1732), Cassandra Strain (6044)	12-Sep-2007	Point (491157,5179727) +/- 10m.	Cockle Creek	Present	Yes		
915217	Ulex europaeus	gorse	Paul Dimmick (3114)	05-Jul-1999	Point (490912,5177483) +/- 100m.		Present	Yes		
1005486	Ulex europaeus	gorse	Michael Rowland (1732), Cassandra Strain (6044)	12-Sep-2007	Point (490891,5178166) +/- 10m.	Cockle Creek Road	Present	Yes		
1005485	Ulex europaeus	gorse	Michael Rowland (1732), Cassandra Strain (6044)	12-Sep-2007	Point (490776,5181797) +/- 10m.	Cockle Creek Road	Present	Yes		
1005489	Ulex europaeus	gorse	Michael Rowland (1732), Cassandra Strain (6044)	12-Sep-2007	Point (490920,5177479) +/- 10m.	Cockle Creek Road	Present	Yes		
1005488	Ulex europaeus	gorse	Michael Rowland (1732), Cassandra Strain (6044)	12-Sep-2007	Point (490921,5177612) +/- 10m.	Cockle Creek Road	Present	Yes		
914382	Ulex europaeus	gorse	Paul Dimmick (3114)	05-Jul-1999	Point (490712,5177583) +/- 50m.		Present	Yes		
914691	Ulex europaeus	gorse	David Ziegeler (7381)	Apr-1989	Point (490912,5177583) +/- 500m.		Present	Yes		
1002587	Watsonia meriana var. bulbillifera	bulbil watsonia	Michael Rowland (1732), Cassandra Strain (6044)	12-Sep-2007	Point (491032,5178550) +/- 10m.	Cockle Creek Road	Present	No		

### Unverified Records

For more information about introduced weed species, please visit the following URL for contact details in your area.

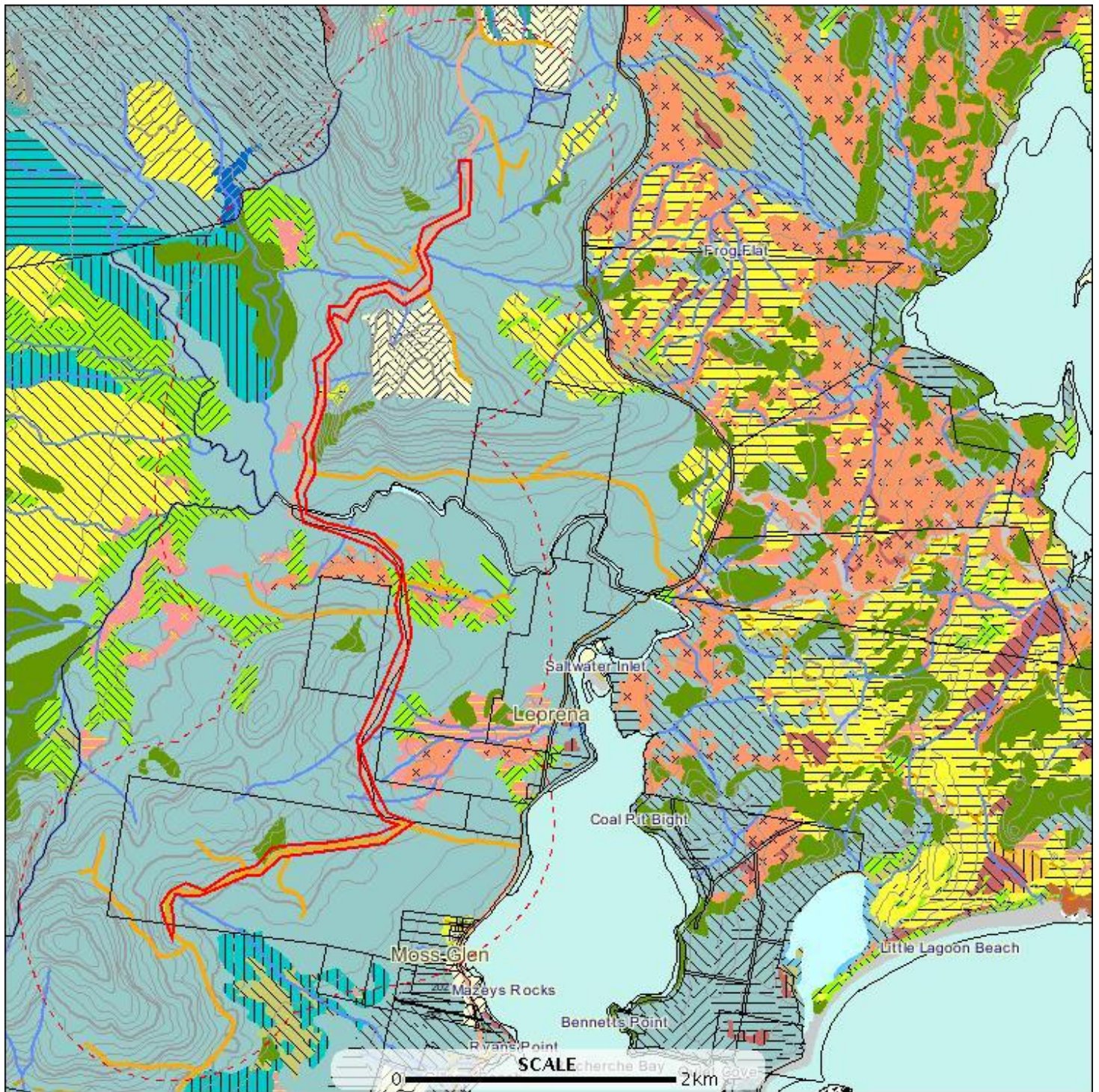
<http://www.dpipwe.tas.gov.au/inter.nsf/WebPages/TPRY-52J8Z3?open>



# TASVEG communities within 1000 metres

E: 487941  
N: 5186433

E: 492329  
N: 5186433

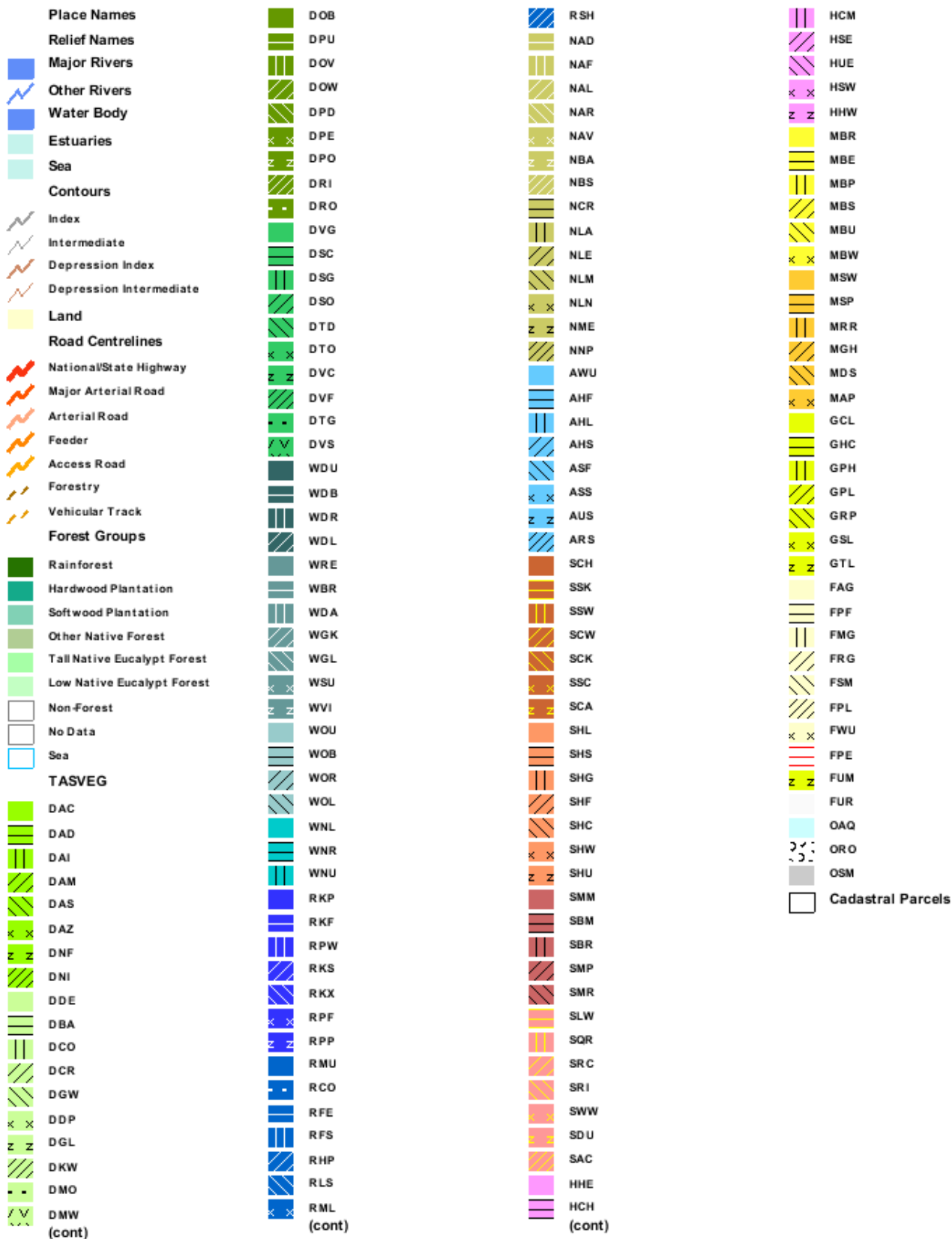


E: 487941  
N: 5178751

E: 492329  
N: 5178751



# TASVEG communities within 1000 metres





## TASVEG communities within 1000 metres

Id	Code	Community	Emergent species
101394610	WOU	Eucalyptus obliqua wet forest (undifferentiated)	
101394979	WOL	Eucalyptus obliqua forest over Leptospermum	
101561880	WOU	Eucalyptus obliqua wet forest (undifferentiated)	
101394794	NLM	Leptospermum lanigerum - Melaleuca squarrosa swamp forest	
101394799	SHW	Wet heathland	
101394968	DNI	Eucalyptus nitida dry forest and woodland	
101394974	DNI	Eucalyptus nitida dry forest and woodland	
101395168	SWW	Western wet scrub	
101395165	FUM	Extra-urban miscellaneous	
101395455	DOB	Eucalyptus obliqua dry forest and woodland	
101394820	SHW	Wet heathland	
101393173	SWW	Western wet scrub	
101393317	RSH	Highland low rainforest and scrub	
101394817	SHW	Wet heathland	
101394796	FUR	Urban areas	
101393319	SWW	Western wet scrub	
101393174	DOB	Eucalyptus obliqua dry forest and woodland	
101392538	SHW	Wet heathland	
101392545	SLW	Leptospermum scrub	
101393316	WNU	Eucalyptus nitida wet forest (undifferentiated)	
101393164	SWW	Western wet scrub	
101392546	OAQ	Water, sea	
101395258	FUR	Urban areas	
101395447	DNI	Eucalyptus nitida dry forest and woodland	
101395259	FUR	Urban areas	
101394797	WOU	Eucalyptus obliqua wet forest (undifferentiated)	
101392539	DOB	Eucalyptus obliqua dry forest and woodland	
101392336	SLW	Leptospermum scrub	
101394818	WOU	Eucalyptus obliqua wet forest (undifferentiated)	
101395163	SHW	Wet heathland	Eucalyptus nitida
101395260	DOB	Eucalyptus obliqua dry forest and woodland	
101394918	MBU	Buttongrass moorland (undifferentiated)	
101569659	WOL	Eucalyptus obliqua forest over Leptospermum	
101569656	DOB	Eucalyptus obliqua dry forest and woodland	
101569660	MBE	Eastern buttongrass moorland	
101569657	WOL	Eucalyptus obliqua forest over Leptospermum	
101569670	SHW	Wet heathland	
101569667	WOL	Eucalyptus obliqua forest over Leptospermum	
101569666	SHW	Wet heathland	
101569672	WOL	Eucalyptus obliqua forest over Leptospermum	
101569668	SMR	Melaleuca squarrosa scrub	
101394683	WOU	Eucalyptus obliqua wet forest (undifferentiated)	
101394779	WNU	Eucalyptus nitida wet forest (undifferentiated)	
101392772	MBU	Buttongrass moorland (undifferentiated)	
101392778	WNR	Eucalyptus nitida over rainforest	
101392340	FRG	Regenerating cleared land	
101393001	SWW	Western wet scrub	
101393171	DNI	Eucalyptus nitida dry forest and woodland	
101394812	SWW	Western wet scrub	
101392548	SLW	Leptospermum scrub	
101392134	SHW	Wet heathland	Eucalyptus nitida
101392337	WOB	Eucalyptus obliqua forest with broadleaf shrubs	
101392231	WOU	Eucalyptus obliqua wet forest (undifferentiated)	
101394816	SLW	Leptospermum scrub	
101394792	WOU	Eucalyptus obliqua wet forest (undifferentiated)	
101392541	DNI	Eucalyptus nitida dry forest and woodland	
101392139	SWW	Western wet scrub	
101393952	DNI	Eucalyptus nitida dry forest and woodland	
101395171	DOB	Eucalyptus obliqua dry forest and woodland	

## TASVEG communities within 1000 metres

Id	Code	Community	Emergent species
101395443	DOB	Eucalyptus obliqua dry forest and woodland	
101395445	DNI	Eucalyptus nitida dry forest and woodland	
101395446	FPU	Unverified plantations for silviculture	
101394798	SWW	Western wet scrub	
101395261	ORO	Rock (cryptogamic lithosere )	
101395448	DOB	Eucalyptus obliqua dry forest and woodland	
101394973	DNI	Eucalyptus nitida dry forest and woodland	
101392242	MBU	Buttongrass moorland (undifferentiated)	
101392332	DOB	Eucalyptus obliqua dry forest and woodland	
101394815	SHW	Wet heathland	
101394814	DNI	Eucalyptus nitida dry forest and woodland	
101393163	DNI	Eucalyptus nitida dry forest and woodland	
101394980	WNU	Eucalyptus nitida wet forest (undifferentiated)	
101395454	DOB	Eucalyptus obliqua dry forest and woodland	
101392137	DNI	Eucalyptus nitida dry forest and woodland	
101394795	NLM	Leptospermum lanigerum - Melaleuca squarrosa swamp forest	
101394778	DOB	Eucalyptus obliqua dry forest and woodland	
101394800	SWW	Western wet scrub	
101395449	DNI	Eucalyptus nitida dry forest and woodland	
101394813	DNI	Eucalyptus nitida dry forest and woodland	
101395164	DOB	Eucalyptus obliqua dry forest and woodland	
101395170	SHW	Wet heathland	
101395444	DNI	Eucalyptus nitida dry forest and woodland	
101393951	DNI	Eucalyptus nitida dry forest and woodland	
101392136	SWW	Western wet scrub	
101392138	DNI	Eucalyptus nitida dry forest and woodland	
101392341	GCL	Lowland grassland complex	
101393165	SWW	Western wet scrub	
101393172	SWW	Western wet scrub	
101392228	DNI	Eucalyptus nitida dry forest and woodland	
101394793	DOB	Eucalyptus obliqua dry forest and woodland	
101392141	WOU	Eucalyptus obliqua wet forest (undifferentiated)	
101394819	SWW	Western wet scrub	
101392331	SWW	Western wet scrub	
101392540	DOB	Eucalyptus obliqua dry forest and woodland	
101571088	FPL	Plantations for silviculture	
101571089	FPL	Plantations for silviculture	
101568646	OAQ	Water, sea	
101392229	FPU	Unverified plantations for silviculture	
101392199	NLM	Leptospermum lanigerum - Melaleuca squarrosa swamp forest	
101392140	WOR	Eucalyptus obliqua forest over rainforest	

For more information about TASVEG maps, please contact the Coordinator, Tasmanian Vegetation Monitoring and Mapping Program.

Telephone: (03) 6233 4501

Email: [TASVEG@dpipwe.tas.gov.au](mailto:TASVEG@dpipwe.tas.gov.au)

Address: GPO Box 44, Hobart, Tasmania, Australia, 7000

## Threatened communities within 1000 metres

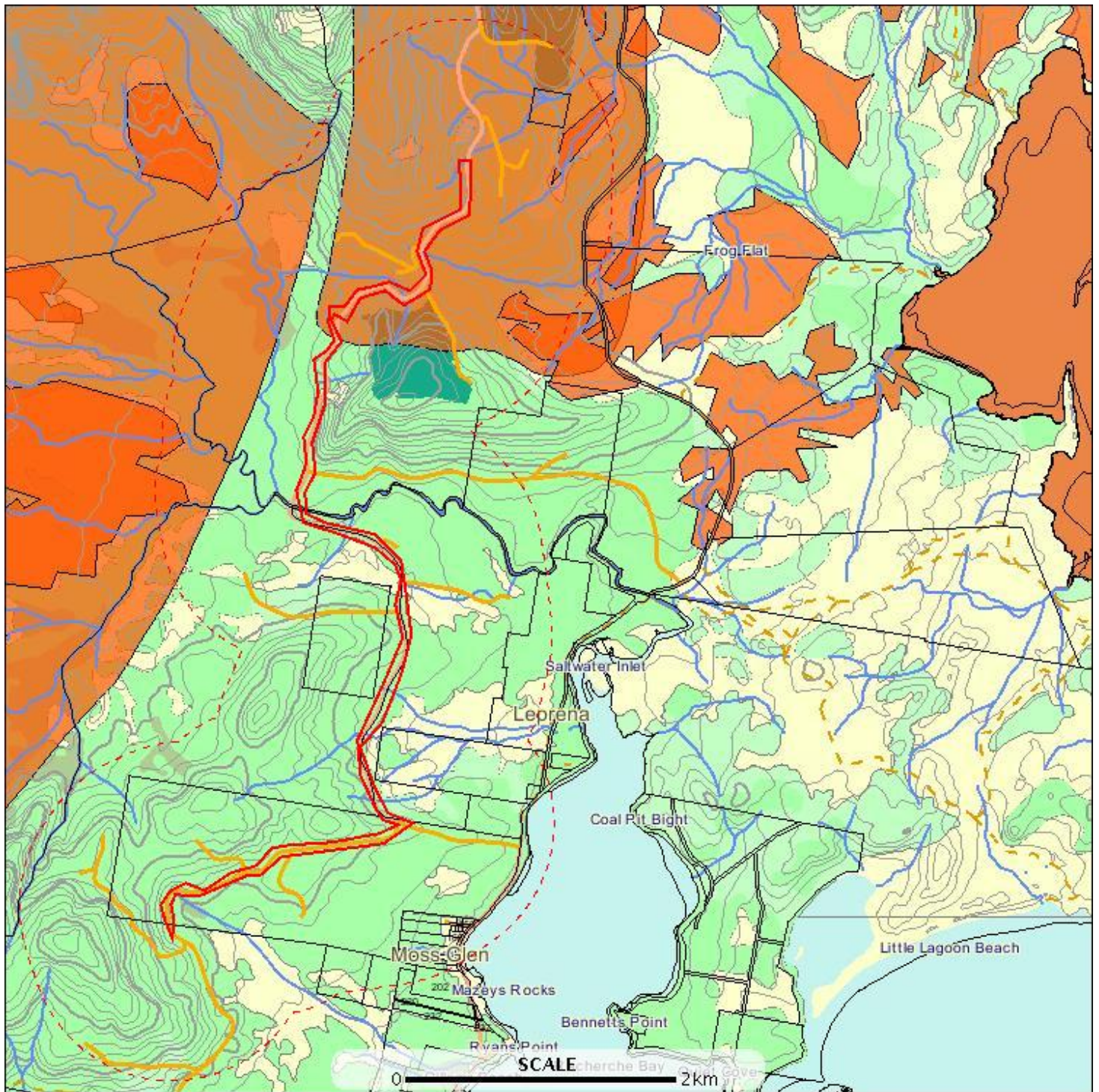
\*\*\* No threatened communities found within 1000 metres. \*\*\*



# Geoconservation sites within 1000 metres

E: 487941  
N: 5186433

E: 492329  
N: 5186433



E: 487941  
N: 5178751

E: 492329  
N: 5178751

## Geoconservation sites within 1000 metres



## Geoconservation sites within 1000 metres

Id	Name	Significance	Geographical significance	Status
2553	Exit Cave - D'Entrecasteaux Valley Karst Area	Outstanding karst system on a global scale, comprising an extensively and highly karstified system which includes the longest cave in the southern hemisphere, mineralogically diverse and well developed speleothms, paleokarst, glaciofluvial derived sediments and a polygonal karst landscape. Extinct mega fauna sub-fossils are also located within these caves.	Global	Listed
2548	Lune River Area Jurassic Basalts and Gemfield Association	Data not yet completed	Region	Listed
2527	Western Tasmania Blanket Bogs	Data not yet completed	Global	Listed

\*\*\* There are restricted sites within 1000 metres, which are not shown on the map or included in the table. Please contact the section listed below for details. \*\*\*

Note: Restricted sites are not displayed.

For more information about the Geoconservation Database, please visit the DPIPWWE web site ([www.dpipwe.tas.gov.au](http://www.dpipwe.tas.gov.au)) or contact the DPIPWWE Geoconservation Officer:

Telephone: (03) 6233 6455

Email: [Rolan.Eberhard@dpipwe.tas.gov.au](mailto:Rolan.Eberhard@dpipwe.tas.gov.au)

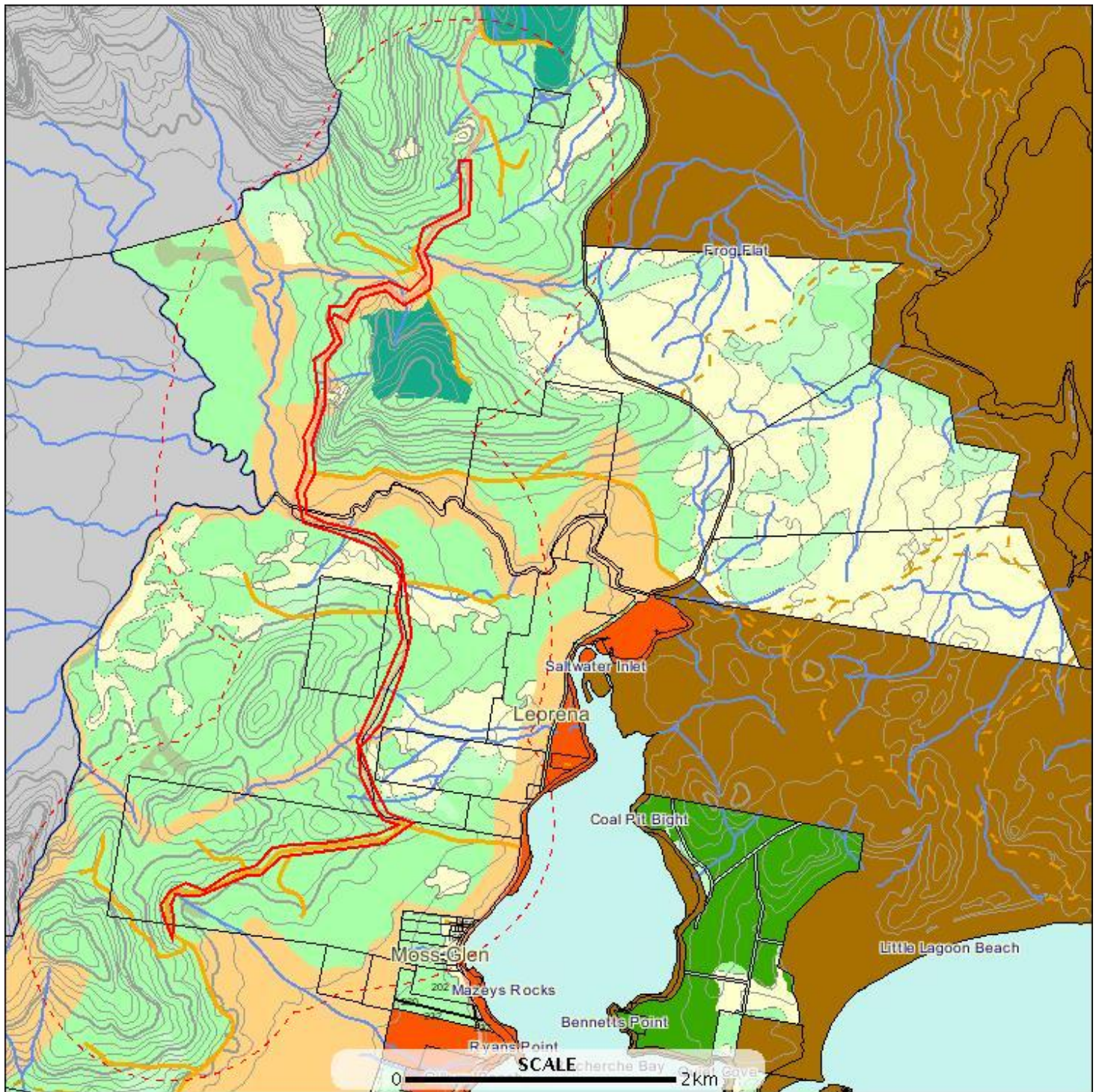
Address: GPO Box 44, Hobart, Tasmania, Australia, 7000



# Reserves within 1000 metres

E: 487941  
N: 5186433

E: 492329  
N: 5186433



E: 487941  
N: 5178751

E: 492329  
N: 5178751

# Reserves within 1000 metres



## Reserves within 1000 metres

Name	Classification	Status
	Informal Reserve on State Forest or Forestry Tas managed land	Informal Reserve
	Informal Reserve on State Forest or Forestry Tas managed land	Informal Reserve
Recherche Bay Nature Recreation Area	Nature Recreation Area	Other Formal Reserve
Southwest National Park	National Park	Dedicated Formal Reserve
Recherche Bay Nature Recreation Area	Nature Recreation Area	Other Formal Reserve
Southport Lagoon Conservation Area	Conservation Area	Other Formal Reserve
	Informal Reserve on State Forest or Forestry Tas managed land	Informal Reserve
Recherche Bay Nature Recreation Area	Nature Recreation Area	Other Formal Reserve

For more information about the Tasmanian Reserve Estate, please contact the Land Conservation Branch DPIPWE.

Ph: (03) 6233 2744

Fax (03) 6223 8603

Address: GPO Box 44, Hobart, Tasmania, Australia, 7000