

Natural Values Atlas Report

Authoritative, comprehensive information on Tasmania's natural values.

Report number: 44413

Reference: SouthCapeRoad3

Requested For: GSLM

Timestamp: 12:40:28 PM Tuesday 14 February 2012

Raptors: buffers 500m and 5000m

Threatened Flora: buffers 500m and 5000m

Threatened Fauna: buffers 500m and 5000m

Conservation Significance Flora: Not requested

Conservation Significance Fauna: Not requested

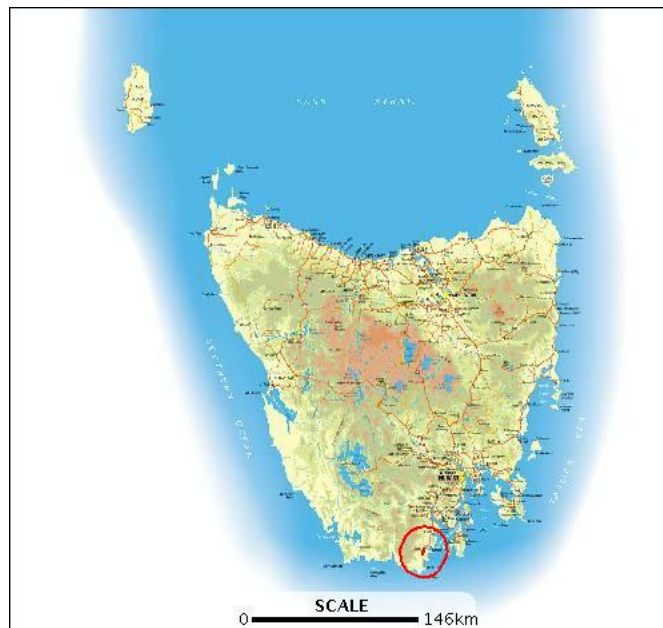
Weeds: Not requested

TasVeg: Not requested

Threatened Communities: Not requested

Geoconservation: Not requested

Tasmanian Reserve Estates: Not requested



The centroid for this query GDA94 491766,5187504 falls within:

1:25000 Map: 4818 LEPRENA

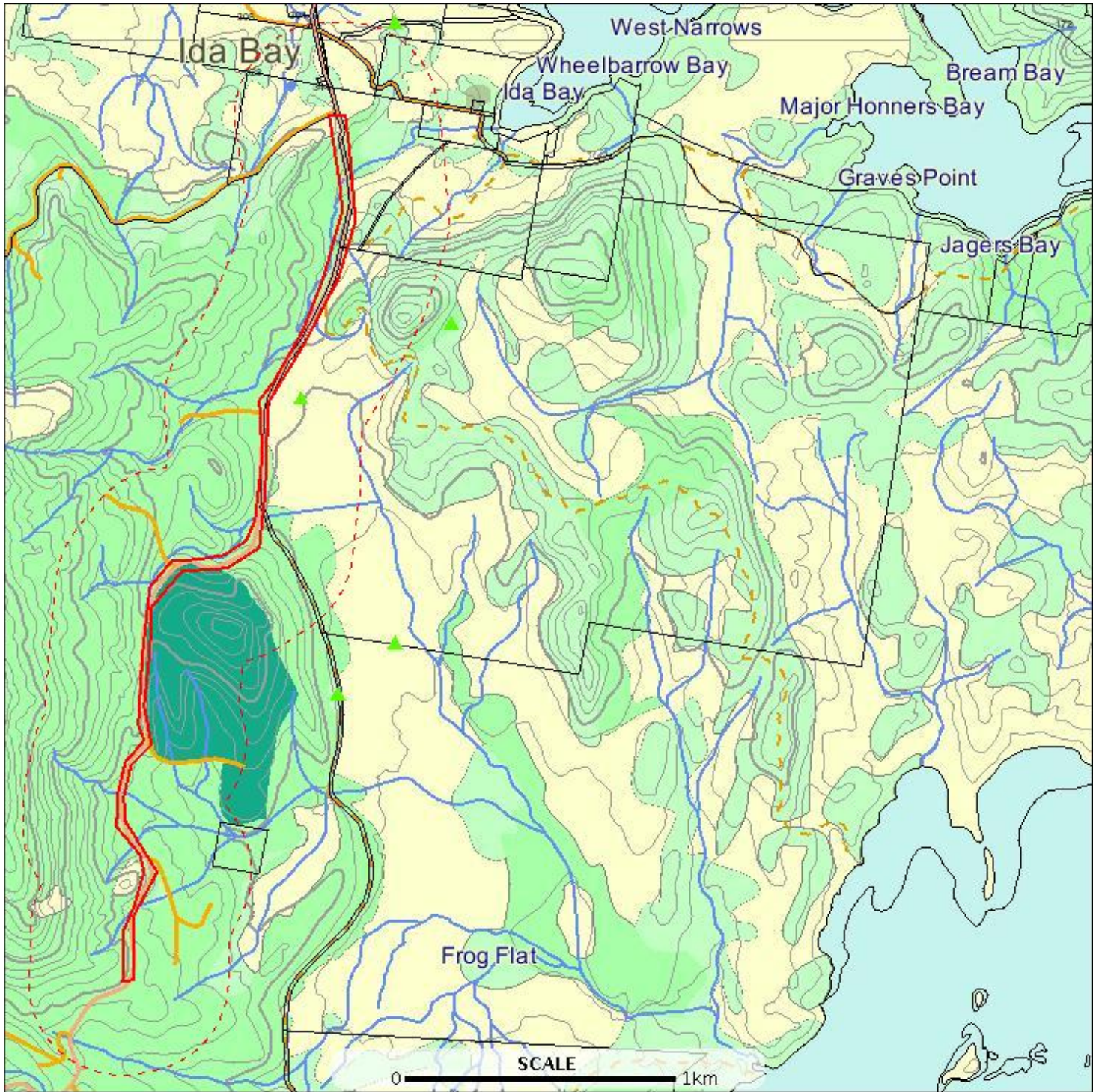
1:25000 Map: 4818 LEPRENA

Property: 2534778 LUNE RIVER ROAD, IDA BAY
TAS 7109

Threatened flora within 500 metres

E: 490529
N: 5190196

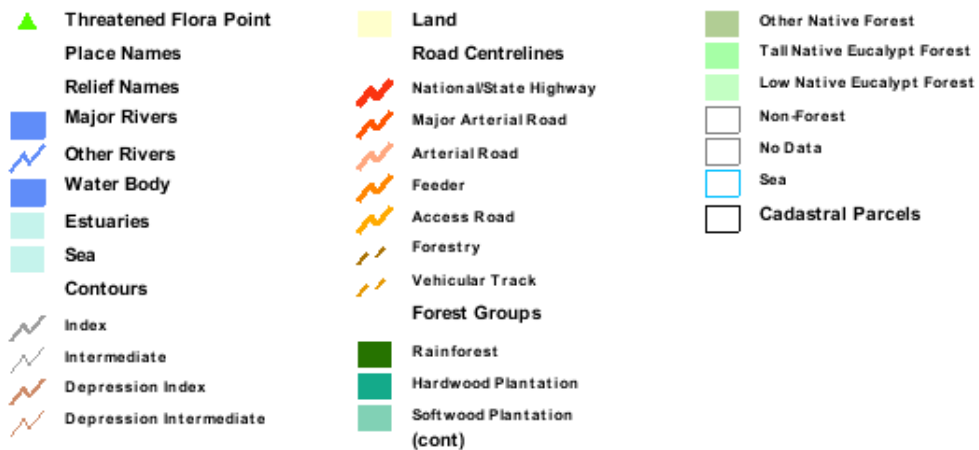
E: 492998
N: 5190196



E: 490529
N: 5184397

E: 492998
N: 5184397

Threatened flora within 500 metres



Threatened flora within 500 metres

Verified Records

Id	Species	Common name	Ss	Ns	Observers	Date	Obs type	Position (gda94)
955210	Corunastylis morrisii	bearded midge-orchid	e		H Wapstra (1062), Annie Wapstra (9224)	30-Jan-1993	sight	Point (492112,5188083) +/- 100m.
226947	Corunastylis morrisii	bearded midge-orchid	e		Hans and Annie Wapstra (1091)	30-Jan-1993	sight	Point (492112,5188083) +/- 100m.

Unverified Records

For more information about threatened species, please contact the Manager, Threatened Species Section.

Telephone: (03) 6233 8759

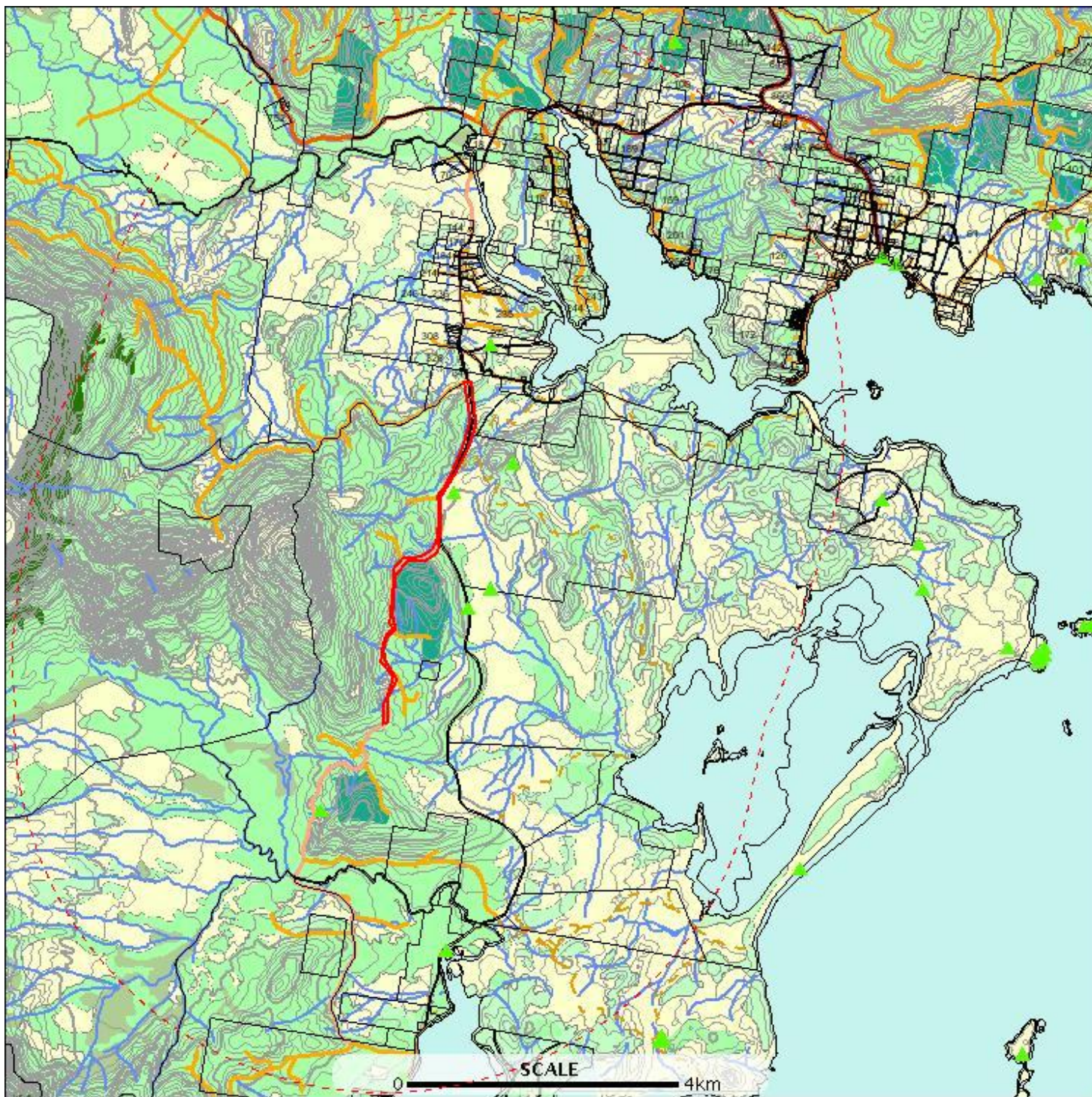
Email: ThreatenedSpecies.Enquiries@dpipwe.tas.gov.au

Address: GPO Box 44, Hobart, Tasmania, Australia, 7000

Threatened flora within 5000 metres

E: 486028
N: 5194696

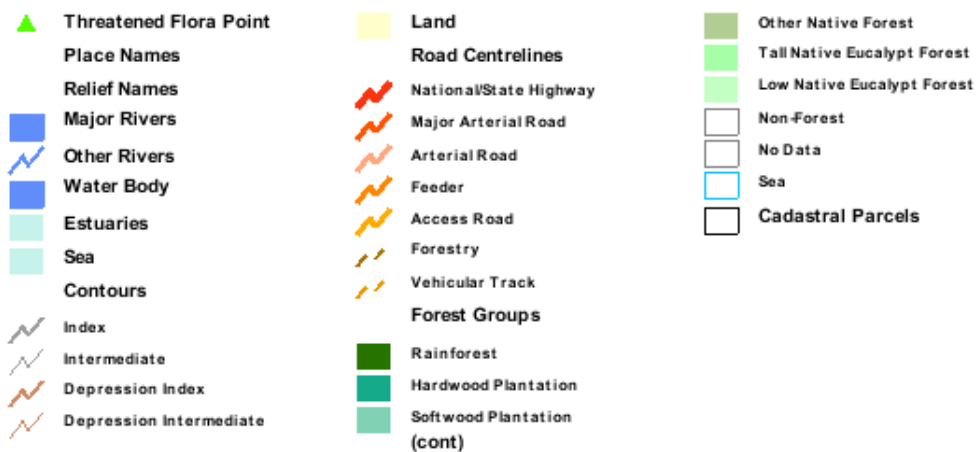
E: 497498
N: 5194696



E: 486028
N: 5179897

E: 497498
N: 5179897

Threatened flora within 5000 metres



Threatened flora within 5000 metres

Verified Records

Id	Species	Common name	Ss	Ns	Observers	Date	Obs type	Position (gda94)
226944	Carex longibrachiata	drooping sedge	r		P. Collier (5300)	01-Nov-1986	sight	Point (492012,5181883) +/- 100m.
563244	Corunastylis morrisii	bearded midge-orchid	e		M Wall (1612)	08-Feb-1979?	sight	Point (492912,5188483) +/- 100m.
226947	Corunastylis morrisii	bearded midge-orchid	e		Hans and Annie Wapstra (1091)	30-Jan-1993	sight	Point (492112,5188083) +/- 100m.
955210	Corunastylis morrisii	bearded midge-orchid	e		H Wapstra (1062), Annie Wapstra (9224)	30-Jan-1993	sight	Point (492112,5188083) +/- 100m.
227729	Corunastylis morrisii	bearded midge-orchid	e		David Ziegeler (7381)	21-Feb-1992	sight	Point (492612,5186783) +/- 100m.
226900	Deyeuxia densa	heath bentgrass	r		- Unknown (21598)	08-Jan-1967	sight	Point (490312,5183783) +/- 1500m.
227705	Deyeuxia densa	heath bentgrass	r		- Unknown (21598)	07-Jan-1967	sight	Point (491412,5180183) +/- 3000m.
227704	Deyeuxia densa	heath bentgrass	r		D.I. Morris (4111)	26-Jan-1981	sight	Point (491412,5180183) +/- 200m.
944954	Deyeuxia minor	small bentgrass	r		Denis IMorris (6606)	14-Jan-1981	sight	Point (491412,5180183) +/- 100m.
944949	Deyeuxia minor	small bentgrass	r		Denis IMorris (6606)	26-Jan-1981	sight	Point (491412,5180183) +/- 100m.
944951	Deyeuxia minor	small bentgrass	r		Denis IMorris (6606)	26-Jan-1981	sight	Point (491412,5180183) +/- 100m.
567957	Prasophyllum pulchellum	pretty leek-orchid	e	CR	Les Rubenach (1522)	10-Nov-1996?	sight	Point (492612,5190083) +/- 100m.
1201668	Thelymitra holmesii	bluestar sun-orchid	r		Hans Wapstra (3208), Annie Wapstra (9224)	05-Dec-2006	sight	Point (492307,5186513) +/- 10m.

Unverified Records

For more information about threatened species, please contact the Manager, Threatened Species Section.

Telephone: (03) 6233 8759

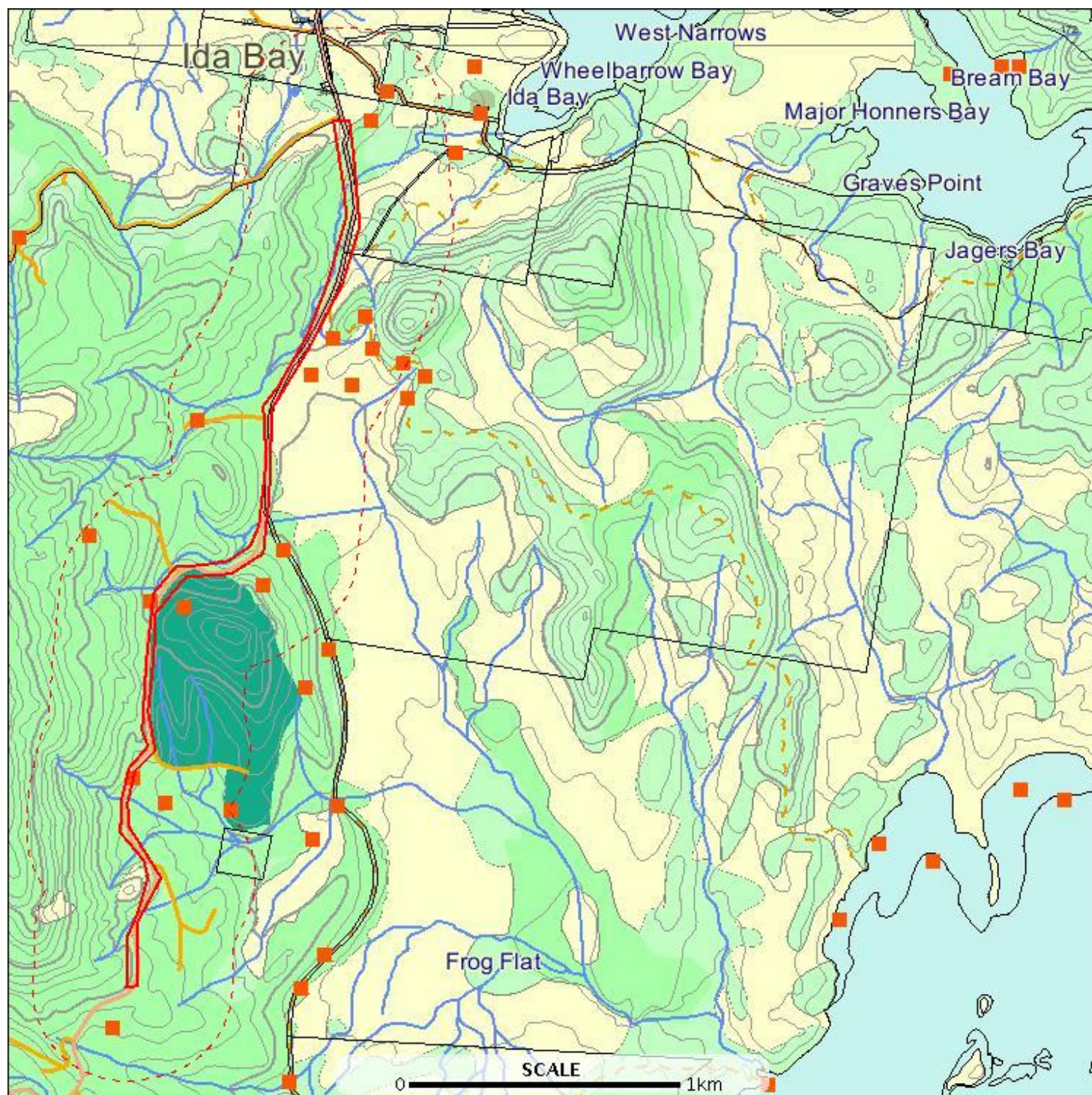
Email: ThreatenedSpecies.Enquiries@dpipwe.tas.gov.au

Address: GPO Box 44, Hobart, Tasmania, Australia, 7000

Threatened fauna within 500 metres

E: 490529
N: 5190196

E: 492998
N: 5190196



E: 490529
N: 5184397

E: 492998
N: 5184397

Threatened fauna within 500 metres



Threatened fauna within 500 metres

Verified Records

Id	Species	Common name	Ss	Ns	Observers	Date	Obs type	Position (gda94)
1031722	Dasyurus maculatus subsp. maculatus	spotted-tailed quoll	r	VU	- Unknown (21598)	06-Feb-2005	sight	Point (492358,5188194) +/- 7m.
1038288	Dasyurus maculatus subsp. maculatus	spotted-tailed quoll	r	VU	- Unknown (21598)	30-Jan-2005	sight	Point (491087,5184774) +/- 7m.
1042399	Dasyurus maculatus subsp. maculatus	spotted-tailed quoll	r	VU	- Unknown (21598)	04-Feb-2005	sight	Point (491467,5187010) +/- 7m.
1042407	Sarcophilus harrisii	tasmanian devil	e	EN	- Unknown (21598)	31-Jan-2005	sight	Point (492461,5189597) +/- 7m.
1036104	Sarcophilus harrisii	tasmanian devil	e	EN	STTD Volunteers (18629)	28-Jan-2005	sight	Point (492461,5189597) +/- 7m.
1030564	Sarcophilus harrisii	tasmanian devil	e	EN	- Unknown (21598)	22-Mar-2005	sight	Point (492547,5189751) +/- 7m.
1160195	Sarcophilus harrisii	tasmanian devil	e	EN	Shannon Troy (12201)	Dec-2009	fur	Point (492634,5188306) +/- 5m.
1160216	Sarcophilus harrisii	tasmanian devil	e	EN	Shannon Troy (12201)	24-Nov-2009	sight	Point (492634,5188306) +/- 5m.
1160218	Sarcophilus harrisii	tasmanian devil	e	EN	Shannon Troy (12201)	25-Nov-2009	sight	Point (492634,5188306) +/- 5m.
1043680	Sarcophilus harrisii	tasmanian devil	e	EN	Clare Hawkins (8562)	09-Feb-2005	sight	Point (492471,5188384) +/- 7m.
1033332	Sarcophilus harrisii	tasmanian devil	e	EN	- Unknown (21598)	22-Mar-2005	sight	Point (492471,5188384) +/- 7m.
1029673	Sarcophilus harrisii	tasmanian devil	e	EN	- Unknown (21598)	25-Mar-2005	sight	Point (492471,5188384) +/- 7m.
1031764	Sarcophilus harrisii	tasmanian devil	e	EN	- Unknown (21598)	22-Mar-2005	sight	Point (492259,5188443) +/- 7m.
1160194	Sarcophilus harrisii	tasmanian devil	e	EN	Shannon Troy (12201)	Dec-2009	fur	Point (492259,5188445) +/- 5m.
1160207	Sarcophilus harrisii	tasmanian devil	e	EN	Shannon Troy (12201)	21-Nov-2009	sight	Point (492431,5188561) +/- 5m.
1160222	Sarcophilus harrisii	tasmanian devil	e	EN	Shannon Troy (12201)	Nov-2009	sight	Point (492431,5188561) +/- 5m.
1160191	Sarcophilus harrisii	tasmanian devil	e	EN	Shannon Troy (12201)	Dec-2009	fur	Point (492431,5188561) +/- 5m.
1160213	Sarcophilus harrisii	tasmanian devil	e	EN	Shannon Troy (12201)	24-Nov-2009	sight	Point (492259,5188445) +/- 5m.
1037615	Sarcophilus harrisii	tasmanian devil	e	EN	- Unknown (21598)	01-Feb-2005	sight	Point (490963,5187391) +/- 7m.
1035147	Sarcophilus harrisii	tasmanian devil	e	EN	- Unknown (21598)	25-Mar-2005	sight	Point (491540,5188009) +/- 7m.
1032529	Sarcophilus harrisii	tasmanian devil	e	EN	- Unknown (21598)	10-Feb-2005	sight	Point (491540,5188009) +/- 7m.
1043433	Sarcophilus harrisii	tasmanian devil	e	EN	- Unknown (21598)	22-Mar-2005	sight	Point (491540,5188009) +/- 7m.
1035610	Sarcophilus harrisii	tasmanian devil	e	EN	Jim Richey (18587)	24-Mar-2005	sight	Point (491540,5188009) +/- 7m.
1027007	Sarcophilus harrisii	tasmanian devil	e	EN	- Unknown (21598)	11-Feb-2005	sight	Point (491540,5188009) +/- 7m.
1029825	Sarcophilus harrisii	tasmanian devil	e	EN	- Unknown (21598)	26-Mar-2005	sight	Point (491540,5188009) +/- 7m.
1043509	Sarcophilus harrisii	tasmanian devil	e	EN	- Unknown (21598)	05-Feb-2005	sight	Point (492142,5188246) +/- 7m.
1026648	Sarcophilus harrisii	tasmanian devil	e	EN	STTD Volunteers (18629)	29-Jan-2005	sight	Point (492142,5188246) +/- 7m.
1030554	Sarcophilus harrisii	tasmanian devil	e	EN	- Unknown (21598)	30-Jan-2005	sight	Point (492142,5188246) +/- 7m.
1040556	Sarcophilus harrisii	tasmanian devil	e	EN	- Unknown (21598)	01-Feb-2005	sight	Point (492142,5188246) +/- 7m.
1028282	Sarcophilus harrisii	tasmanian devil	e	EN	- Unknown (21598)	03-Feb-2005	sight	Point (491287,5187042) +/- 7m.
1030951	Sarcophilus harrisii	tasmanian devil	e	EN	- Unknown (21598)	05-Feb-2005	sight	Point (491467,5187010) +/- 7m.
1026175	Sarcophilus harrisii	tasmanian devil	e	EN	- Unknown (21598)	02-Feb-2005	sight	Point (491467,5187010) +/- 7m.
1032383	Sarcophilus harrisii	tasmanian devil	e	EN	STTD Volunteers (18629)	29-Jan-2005	sight	Point (491891,5187133) +/- 7m.

Threatened fauna within 500 metres

Id	Species	Common name	Ss	Ns	Observers	Date	Obs type	Position (gda94)
1030382	Sarcophilus harrisii	tasmanian devil	e	EN	- Unknown (21598)	05-Feb-2005	sight	Point (491891,5187133) +/- 7m.
1031530	Sarcophilus harrisii	tasmanian devil	e	EN	STTD Volunteers (18629)	30-Jan-2005	sight	Point (491891,5187133) +/- 7m.
1029678	Sarcophilus harrisii	tasmanian devil	e	EN	- Unknown (21598)	22-Mar-2005	sight	Point (491996,5187315) +/- 7m.
1042227	Sarcophilus harrisii	tasmanian devil	e	EN	- Unknown (21598)	06-Feb-2005	sight	Point (491197,5186101) +/- 7m.
1043567	Sarcophilus harrisii	tasmanian devil	e	EN	- Unknown (21598)	05-Feb-2005	sight	Point (491197,5186101) +/- 7m.
1044452	Sarcophilus harrisii	tasmanian devil	e	EN	- Unknown (21598)	05-Feb-2005	sight	Point (491371,5185970) +/- 7m.
1038077	Sarcophilus harrisii	tasmanian devil	e	EN	- Unknown (21598)	31-Jan-2005	sight	Point (491371,5185970) +/- 7m.
1036256	Sarcophilus harrisii	tasmanian devil	e	EN	- Unknown (21598)	05-Feb-2005	sight	Point (491087,5184774) +/- 7m.
1038373	Sarcophilus harrisii	tasmanian devil	e	EN	- Unknown (21598)	04-Feb-2005	sight	Point (491087,5184774) +/- 7m.
1030498	Sarcophilus harrisii	tasmanian devil	e	EN	- Unknown (21598)	01-Feb-2005	sight	Point (492461,5189597) +/- 7m.
1031678	Sarcophilus harrisii	tasmanian devil	e	EN	- Unknown (21598)	29-Jan-2005	sight	Point (492461,5189597) +/- 7m.
1043821	Sarcophilus harrisii	tasmanian devil	e	EN	- Unknown (21598)	31-Jan-2005	sight	Point (492358,5188194) +/- 7m.
1043980	Sarcophilus harrisii	tasmanian devil	e	EN	Billie Lazenby (8543)	03-Feb-2005	sight	Point (492358,5188194) +/- 7m.

Unverified Records

Threatened fauna within 500 metres (based on Habitat Mapping)

Species	Common name	Ss	Ns	Potential	Known	Core
Lissotes menalcas	mt. mangana stag beetle	v		1	0	0
Aquila audax	wedge-tailed eagle	pe	PEN	1	0	0
Perameles gunnii	eastern barred bandicoot		VU	1	0	0
Lathamus discolor	swift parrot	e	EN	1	1	1
Litoria raniformis	green and golden frog	v	VU	1	0	0
Tyto novaehollandiae	masked owl	pe	PVU	1	0	1
Pardalotus quadragintus	forty-spotted pardalote	e	EN	1	0	0
Haliaeetus leucogaster	white-bellied sea-eagle	v		1	0	0
Accipiter novaehollandiae	grey goshawk	e		1	0	1

For more information about threatened species, please contact the Manager, Threatened Species Section.

Telephone: (03) 6233 8759

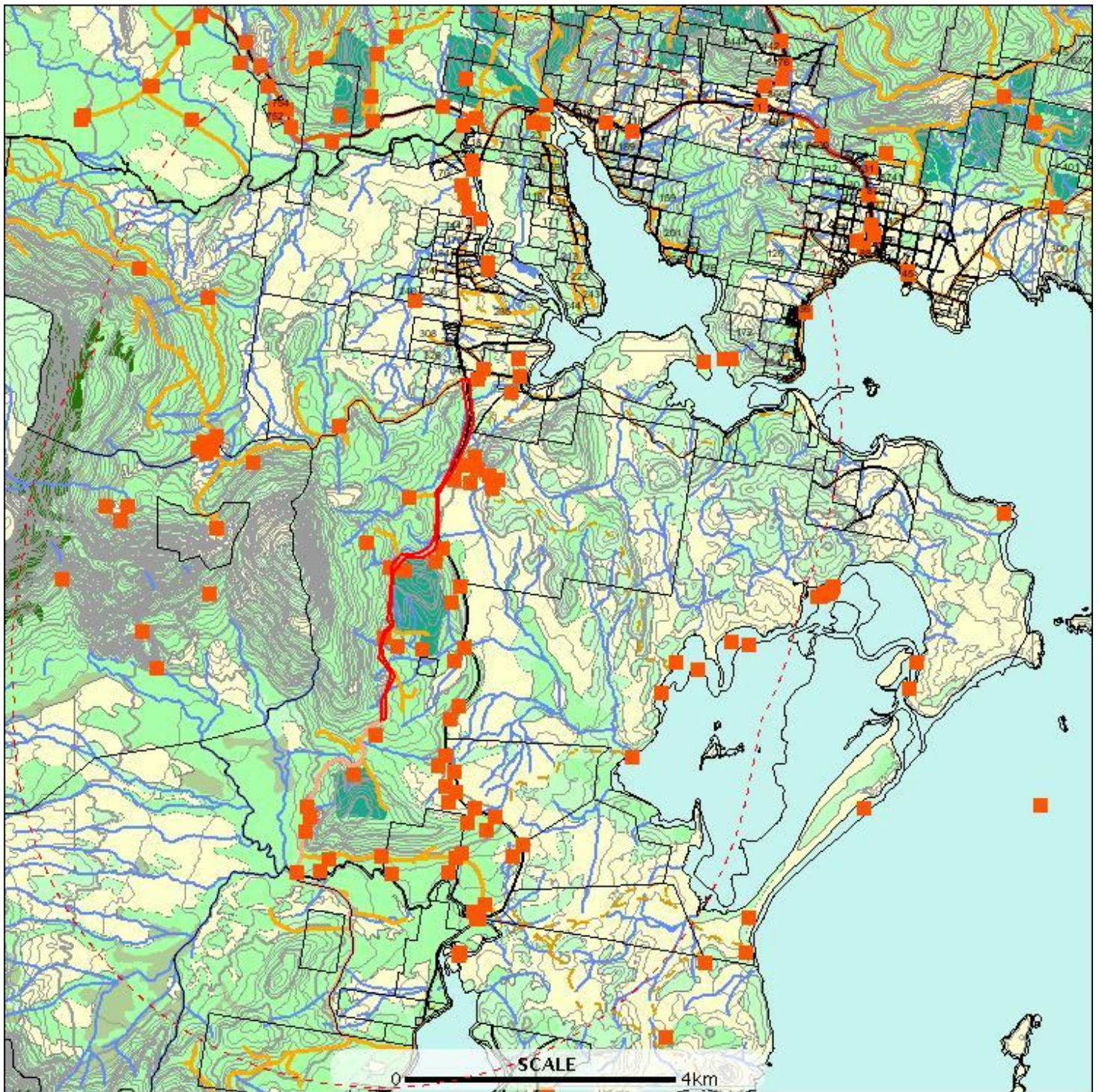
Email: ThreatenedSpecies.Enquiries@dpipwe.tas.gov.au

Address: GPO Box 44, Hobart, Tasmania, Australia, 7000

Threatened fauna within 5000 metres

E: 486028
N: 5194696

E: 497498
N: 5194696



E: 486028
N: 5179897

E: 497498
N: 5179897

Threatened fauna within 5000 metres



Threatened fauna within 5000 metres

Verified Records

Id	Species	Common name	Ss	Ns	Observers	Date	Obs type	Position (gda94)
854567	Accipiter novaehollandiae	grey goshawk	e		A Beith (1595)	01-Feb-1993?	sight	Point (492512,5191783) +/- 100m.
1229633	Alcedo azurea subsp. diemenensis	azure kingfisher or azure kingfisher (tasmanian)	e	EN	Daniel Hackett (19179)	Sep-2005	sight	Point (492400,5192450) +/- 100m.
1229837	Alcedo azurea subsp. diemenensis	azure kingfisher or azure kingfisher (tasmanian)	e	EN	Marcus Windsor (22379)	30-Jan-2010	sight	Point (492390,5192570) +/- 25m.
954203	Alcedo azurea subsp. diemenensis	azure kingfisher or azure kingfisher (tasmanian)	e	EN	Chris Palzer (3412)	26-Mar-2006	sight	Point (492600,5191100) +/- 1500m.
1229712	Alcedo azurea subsp. diemenensis	azure kingfisher or azure kingfisher (tasmanian)	e	EN	- Unknown (21598)	01-Jan-1600?	sight	Point (492225,5181815) +/- 1000m.
1229714	Alcedo azurea subsp. diemenensis	azure kingfisher or azure kingfisher (tasmanian)	e	EN	George Appleby (22358)	14-Nov-2000	sight	Point (492412,5182383) +/- 100m.
1229587	Alcedo azurea subsp. diemenensis	azure kingfisher or azure kingfisher (tasmanian)	e	EN	G Rigby (22357)	23-Oct-1999	sight	Point (492485,5182265) +/- 2000m.
1229713	Alcedo azurea subsp. diemenensis	azure kingfisher or azure kingfisher (tasmanian)	e	EN	George Appleby (22358)	14-Nov-2000	sight	Point (492212,5181783) +/- 100m.
1229682	Alcedo azurea subsp. diemenensis	azure kingfisher or azure kingfisher (tasmanian)	e	EN	Peter Hayes (22389)	Nov-2008	sight	Point (492275,5193050) +/- 250m.
1160196	Dasyurus maculatus	spotted-tailed quoll	r	VU	Shannon Troy (12201)	Dec-2009	fur	Point (489877,5193262) +/- 5m.
1160227	Dasyurus maculatus	spotted-tailed quoll	r	VU	Shannon Troy (12201)	Nov-2009	sight	Point (489933,5193024) +/- 5m.
883210	Dasyurus maculatus subsp. maculatus	spotted-tailed quoll	r	VU	Nick Mooney (16443)	01-Jan-1993?	sight	Point (490612,5193183) +/- 100m.
358808	Dasyurus maculatus subsp. maculatus	spotted-tailed quoll	r	VU	Menna Jones (8901)	08-Apr-1996?	sight	Point (489712,5193183) +/- 25m.
357902	Dasyurus maculatus subsp. maculatus	spotted-tailed quoll	r	VU	Menna Jones (8901)	01-Dec-1993?	sight	Point (489712,5193283) +/- 100m.
357436	Dasyurus maculatus subsp. maculatus	spotted-tailed quoll	r	VU	Menna Jones (8901)	01-Jan-1990?	sight	Point (489812,5193283) +/- 100m.
359011	Dasyurus maculatus subsp. maculatus	spotted-tailed quoll	r	VU	Menna Jones (8901)	01-Sep-1993?	sight	Point (489812,5193283) +/- 100m.
1031722	Dasyurus maculatus subsp. maculatus	spotted-tailed quoll	r	VU	- Unknown (21598)	06-Feb-2005	sight	Point (492358,5188194) +/- 7m.
883209	Dasyurus maculatus subsp. maculatus	spotted-tailed quoll	r	VU	Nick Mooney (16443)	01-Feb-1993?	sight	Point (492612,5191183) +/- 100m.
1042399	Dasyurus maculatus subsp. maculatus	spotted-tailed quoll	r	VU	- Unknown (21598)	04-Feb-2005	sight	Point (491467,5187010) +/- 7m.
1038288	Dasyurus maculatus subsp. maculatus	spotted-tailed quoll	r	VU	- Unknown (21598)	30-Jan-2005	sight	Point (491087,5184774) +/- 7m.
884528	Dasyurus maculatus subsp. maculatus	spotted-tailed quoll	r	VU	David Watts (7378)	01-Jan-1992?	sight	Point (488912,5187583) +/- 200m.
1036265	Dasyurus maculatus subsp. maculatus	spotted-tailed quoll	r	VU	- Unknown (21598)	02-Feb-2005	sight	Point (490143,5183792) +/- 7m.
1033296	Dasyurus maculatus subsp. maculatus	spotted-tailed quoll	r	VU	- Unknown (21598)	05-Feb-2005	sight	Point (490324,5182920) +/- 7m.
1040567	Dasyurus maculatus subsp. maculatus	spotted-tailed quoll	r	VU	- Unknown (21598)	26-Mar-2005	sight	Point (490455,5183093) +/- 7m.
1038915	Dasyurus maculatus subsp. maculatus	spotted-tailed quoll	r	VU	- Unknown (21598)	10-Feb-2005	sight	Point (490275,5193955) +/- 7m.
358171	Dasyurus maculatus subsp. maculatus	spotted-tailed quoll	r	VU	Menna Jones (8901)	01-Jan-1995?	sight	Point (492312,5193683) +/- 200m.
1200402	Goedetrechus mendumae	cave beetle (ida bay)	v		M Mendum (1705)	01-Mar-1969	sight	Point (488780,5188600) +/- 500m.
1200401	Goedetrechus mendumae	cave beetle (ida bay)	v		Arthur Clarke (1669)	1990s	sight	Point (488670,5188670) +/- 500m.
346510	Goedetrechus mendumae	cave beetle (ida bay)	v		A Clarke (1669)	07-Nov-1996?	sight	Point (487912,5186183) +/- 500m.
345246	Goedetrechus mendumae	cave beetle (ida bay)	v		A Clarke (1669)	24-Mar-1989?	sight	Point (486812,5186883) +/- 500m.
345204	Goedetrechus mendumae	cave beetle (ida bay)	v		A Clarke (1669)	21-Dec-1974?	sight	Point (487912,5186183) +/- 500m.
346504	Goedetrechus mendumae	cave beetle (ida bay)	v		A Clarke (1669)	29-Mar-1969?	sight	Point (487912,5186183) +/- 500m.
345191	Goedetrechus mendumae	cave beetle (ida bay)	v		A Clarke (1669)	24-May-1969?	sight	Point (487912,5186183) +/- 500m.
345222	Goedetrechus mendumae	cave beetle (ida bay)	v		A Clarke (1669)	02-Mar-1969?	sight	Point (487912,5186183) +/- 500m.

Threatened fauna within 5000 metres

Id	Species	Common name	Ss	Ns	Observers	Date	Obs type	Position (gda94)
345202	Goedetrechus mendumae	cave beetle (ida bay)	v		A Clarke (1669)	03-Mar-1969?	sight	Point (487912,5186183) +/- 500m.
1238771	Haliaeetus leucogaster	white-bellied sea-eagle	v		Anne Skinner (22980)	11-Sep-2011	sight	Point (495542,5189845) +/- 50m.
717123	Haliaeetus leucogaster	white-bellied sea-eagle	v		- Unknown (21598)	24-Jul-1980?	sight	Point (493365,5193076) +/- 18500m.
890808	Hickmanoxyomma cavaticum	cave harvestman	r		A Goede (1813)	29-Feb-1976?	sight	Point (487412,5187883) +/- 1000m.
890982	Hickmanoxyomma cavaticum	cave harvestman	r		A Lea (1917)	01-Jan-1990?	sight	Point (487412,5187883) +/- 1000m.
891000	Hickmanoxyomma cavaticum	cave harvestman	r		S Eberhard (2279)	20-Jan-1985?	sight	Point (487412,5187883) +/- 1000m.
890983	Hickmanoxyomma cavaticum	cave harvestman	r		A Goede (1813)	27-Oct-1967?	sight	Point (487412,5187883) +/- 1000m.
890803	Hickmanoxyomma cavaticum	cave harvestman	r		D Alcock (6754)	12-Jun-1949?	sight	Point (487412,5187883) +/- 1000m.
1200436	Hickmanoxyomma cavaticum	cave harvestman	r		R Swain (2190),Alistair Richardson (2595),Stefan Eberhard (3474)	26-Oct-1985	sight	Point (488870,5188650) +/- 500m.
1200431	Hickmanoxyomma cavaticum	cave harvestman	r		R Swain (2190),Alistair Richardson (2595),Stefan Eberhard (3474)	29-Jan-1993	sight	Point (488780,5188600) +/- 500m.
1200417	Hickmanoxyomma cavaticum	cave harvestman	r		Arthur Clarke (1669)	22-Aug-1985	sight	Point (488780,5188600) +/- 500m.
1200420	Hickmanoxyomma cavaticum	cave harvestman	r		Arthur Clarke (1669)	26-Jan-1994	sight	Point (488780,5188600) +/- 500m.
1200412	Hickmanoxyomma cavaticum	cave harvestman	r		Arthur Clarke (1669)	25-Jun-1985	sight	Point (488780,5188600) +/- 500m.
1200433	Hickmanoxyomma cavaticum	cave harvestman	r		R Swain (2190),Alistair Richardson (2595),Stefan Eberhard (3474)	12-Jun-1905	sight	Point (488870,5188650) +/- 500m.
1200423	Hickmanoxyomma cavaticum	cave harvestman	r		Arthur Clarke (1669)	13-May-1986	sight	Point (488870,5188650) +/- 500m.
1200426	Hickmanoxyomma cavaticum	cave harvestman	r		R Swain (2190),Alistair Richardson (2595),Stefan Eberhard (3474)	04-May-1990	sight	Point (488870,5188650) +/- 500m.
1200427	Hickmanoxyomma cavaticum	cave harvestman	r		R Swain (2190),Alistair Richardson (2595),Stefan Eberhard (3474)	05-May-1990	sight	Point (488870,5188650) +/- 500m.
1200428	Hickmanoxyomma cavaticum	cave harvestman	r		R Swain (2190),Alistair Richardson (2595),Stefan Eberhard (3474)	04-Apr-1990	sight	Point (488870,5188650) +/- 500m.
1200424	Hickmanoxyomma cavaticum	cave harvestman	r		R Swain (2190),Alistair Richardson (2595),Stefan Eberhard (3474)	14-Jan-1993	sight	Point (488870,5188650) +/- 500m.
1200416	Hickmanoxyomma cavaticum	cave harvestman	r		Arthur Clarke (1669)	24-Mar-1989	sight	Point (488670,5188670) +/- 500m.
1200411	Hickmanoxyomma cavaticum	cave harvestman	r		Arthur Clarke (1669)	26-Apr-1987	sight	Point (488670,5188670) +/- 500m.
1200408	Hickmanoxyomma cavaticum	cave harvestman	r		Arthur Clarke (1669)	1990s	sight	Point (488750,5188750) +/- 500m.
1200434	Hickmanoxyomma cavaticum	cave harvestman	r		R Swain (2190),Alistair Richardson (2595),Stefan Eberhard (3474)	24-Mar-1989	sight	Point (488750,5188750) +/- 500m.
1200410	Hickmanoxyomma cavaticum	cave harvestman	r		Arthur Clarke (1669)	12-Oct-1985	sight	Point (488750,5188750) +/- 500m.
1200418	Hickmanoxyomma cavaticum	cave harvestman	r		Arthur Clarke (1669)	06-May-1990	sight	Point (488750,5188750) +/- 500m.

Threatened fauna within 5000 metres

Id	Species	Common name	Ss	Ns	Observers	Date	Obs type	Position (gda94)
1200409	Hickmanoxyomma cavaticum	cave harvestman	r		Arthur Clarke (1669)	24-Aug-1985	sight	Point (488750,5188750) +/- 500m.
1200415	Hickmanoxyomma cavaticum	cave harvestman	r		Arthur Clarke (1669)	07-Feb-1986	sight	Point (488750,5188750) +/- 500m.
1200430	Hickmanoxyomma cavaticum	cave harvestman	r		R Swain (2190),Alistair Richardson (2595),Stefan Eberhard (3474)	11-Nov-1986	sight	Point (488750,5188750) +/- 500m.
1200425	Hickmanoxyomma cavaticum	cave harvestman	r		R Swain (2190),Alistair Richardson (2595),Stefan Eberhard (3474)	1990s	sight	Point (488850,5188750) +/- 500m.
1200422	Hickmanoxyomma cavaticum	cave harvestman	r		Arthur Clarke (1669)	19-Jan-1986	sight	Point (488750,5188750) +/- 500m.
1200419	Hickmanoxyomma cavaticum	cave harvestman	r		Arthur Clarke (1669)	27-Mar-1993	sight	Point (488930,5188830) +/- 500m.
1200435	Hickmanoxyomma cavaticum	cave harvestman	r		R Swain (2190),Alistair Richardson (2595),Stefan Eberhard (3474)	29-Sep-1987	sight	Point (488930,5188830) +/- 500m.
1200414	Hickmanoxyomma cavaticum	cave harvestman	r		Arthur Clarke (1669)	17-Jan-1993	sight	Point (488930,5188830) +/- 500m.
1200432	Hickmanoxyomma cavaticum	cave harvestman	r		R Swain (2190),Alistair Richardson (2595),Stefan Eberhard (3474)	17-Aug-1985	sight	Point (488930,5188830) +/- 500m.
890832	Hickmanoxyomma cavaticum	cave harvestman	r		A Goede (1813)	15-Jan-1975?	sight	Point (488112,5185683) +/- 100m.
891001	Hickmanoxyomma cavaticum	cave harvestman	r		A Goede (1813)	02-Mar-1967?	sight	Point (488112,5185683) +/- 100m.
891008	Hickmanoxyomma cavaticum	cave harvestman	r		N Poulter (1830)	22-Jan-1973?	sight	Point (488112,5185683) +/- 100m.
890810	Hickmanoxyomma cavaticum	cave harvestman	r		A Goede (1813)	23-Mar-1969?	sight	Point (488112,5185683) +/- 100m.
891012	Hickmanoxyomma cavaticum	cave harvestman	r		A Clarke (1669)	31-Oct-1987?	sight	Point (488112,5185683) +/- 100m.
891009	Hickmanoxyomma cavaticum	cave harvestman	r		A Goede (1813)	19-May-1974?	sight	Point (488112,5185683) +/- 100m.
891005	Hickmanoxyomma cavaticum	cave harvestman	r		A Goede (1813)	29-Mar-1969?	sight	Point (488112,5185683) +/- 100m.
891007	Hickmanoxyomma cavaticum	cave harvestman	r		W Lehmann (2519)	21-Apr-1971?	sight	Point (488112,5185683) +/- 100m.
891003	Hickmanoxyomma cavaticum	cave harvestman	r		A Goede (1813)	03-Nov-1968?	sight	Point (488112,5185683) +/- 100m.
891002	Hickmanoxyomma cavaticum	cave harvestman	r		A Goede (1813)	27-Feb-1968?	sight	Point (488112,5185683) +/- 100m.
891006	Hickmanoxyomma cavaticum	cave harvestman	r		A Goede (1813)	25-Jul-1971?	sight	Point (488112,5185683) +/- 100m.
890831	Hickmanoxyomma cavaticum	cave harvestman	r		A Goede (1813)	19-Aug-1974?	sight	Point (488112,5185683) +/- 100m.
891010	Hickmanoxyomma cavaticum	cave harvestman	r		A Goede (1813)	21-Dec-1974?	sight	Point (488112,5185683) +/- 100m.
890812	Hickmanoxyomma cavaticum	cave harvestman	r		A Goede (1813)	22-Nov-1970?	sight	Point (488112,5185683) +/- 100m.
891011	Hickmanoxyomma cavaticum	cave harvestman	r		A Goede (1813)	01-Jan-1976?	sight	Point (488112,5185683) +/- 100m.
891004	Hickmanoxyomma cavaticum	cave harvestman	r		A Goede (1813)	03-Nov-1969?	sight	Point (488112,5185683) +/- 100m.
890811	Hickmanoxyomma cavaticum	cave harvestman	r		E Hamilton-Smith (7420)	24-May-1969?	sight	Point (488112,5185683) +/- 100m.
890830	Hickmanoxyomma cavaticum	cave harvestman	r		A Goede (1813)	05-Nov-1972?	sight	Point (488112,5185683) +/- 100m.
890833	Hickmanoxyomma cavaticum	cave harvestman	r		S Eberhard (2279)	01-Dec-1984?	sight	Point (487412,5187883) +/- 1000m.
891013	Hickmanoxyomma cavaticum	cave harvestman	r		A Goede (1813)	13-Jan-1968?	sight	Point (487412,5187883) +/- 1000m.
890809	Hickmanoxyomma cavaticum	cave harvestman	r		S Eberhard (2279)	11-Nov-1986?	sight	Point (487412,5187883) +/- 1000m.

Threatened fauna within 5000 metres

Id	Species	Common name	Ss	Ns	Observers	Date	Obs type	Position (gda94)
890807	Hickmanoxyomma cavaticum	cave harvestman	r		A Goede (1813)	25-Jul-1971?	sight	Point (487412,5187883) +/- 1000m.
890984	Hickmanoxyomma cavaticum	cave harvestman	r		A Goede (1813)	15-Nov-1975?	sight	Point (487412,5187883) +/- 1000m.
891033	Hickmanoxyomma cavaticum	cave harvestman	r		S Eberhard (2279)	21-Nov-1986?	sight	Point (487412,5187883) +/- 1000m.
891014	Hickmanoxyomma cavaticum	cave harvestman	r		A Goede (1813)	18-Jan-1969?	sight	Point (487412,5187883) +/- 1000m.
890806	Hickmanoxyomma cavaticum	cave harvestman	r		A Goede (1813)	29-Jun-1974?	sight	Point (487412,5187883) +/- 1000m.
890804	Hickmanoxyomma cavaticum	cave harvestman	r		A Goede (1813)	22-Dec-1964?	sight	Point (487412,5187883) +/- 1000m.
891032	Hickmanoxyomma cavaticum	cave harvestman	r		S Eberhard (2279)	26-Oct-1985?	sight	Point (487412,5187883) +/- 1000m.
890835	Hickmanoxyomma cavaticum	cave harvestman	r		A Clarke (1669)	24-Mar-1989?	sight	Point (487412,5187883) +/- 1000m.
890981	Hickmanoxyomma cavaticum	cave harvestman	r		V Hickman (2452)	22-Nov-1939?	sight	Point (487412,5187883) +/- 1000m.
890837	Hickmanoxyomma cavaticum	cave harvestman	r		S Eberhard (2279)	07-Feb-1986?	sight	Point (487412,5187883) +/- 1000m.
890836	Hickmanoxyomma cavaticum	cave harvestman	r		A Clarke (1669)	21-Jun-1987?	sight	Point (487412,5187883) +/- 1000m.
890805	Hickmanoxyomma cavaticum	cave harvestman	r		A Richards (2584)	10-Nov-1966?	sight	Point (487412,5187883) +/- 1000m.
891031	Hickmanoxyomma cavaticum	cave harvestman	r		A Clarke (1669)	23-Jan-1988?	sight	Point (487412,5187883) +/- 1000m.
890972	Hickmanoxyomma cavaticum	cave harvestman	r		S Eberhard (2279)	01-Jan-1990?	sight	Point (487412,5187883) +/- 1000m.
890834	Hickmanoxyomma cavaticum	cave harvestman	r		S Eberhard (2279)	01-Jan-1984?	sight	Point (487412,5187883) +/- 1000m.
890973	Idacarabus troglodytes	cave beetle (precipitous bluff)	r		S Eberhard (2279)	01-Jan-1990?	sight	Point (487412,5187883) +/- 1000m.
346416	Idacarabus troglodytes	cave beetle (precipitous bluff)	r		A Clarke (1669)	25-Mar-1989?	sight	Point (487612,5187683) +/- 500m.
345231	Idacarabus troglodytes	cave beetle (precipitous bluff)	r		A Clarke (1669)	13-Feb-1971?	sight	Point (487612,5187683) +/- 500m.
345165	Idacarabus troglodytes	cave beetle (precipitous bluff)	r		A Clarke (1669)	11-Nov-1986?	sight	Point (487612,5187683) +/- 500m.
345116	Idacarabus troglodytes	cave beetle (precipitous bluff)	r		A Clarke (1669)	07-Nov-1996?	sight	Point (487612,5187683) +/- 500m.
346684	Idacarabus troglodytes	cave beetle (precipitous bluff)	r		A Clarke (1669)	26-Apr-1987?	sight	Point (486812,5186883) +/- 500m.
345198	Idacarabus troglodytes	cave beetle (precipitous bluff)	r		A Clarke (1669)	03-Nov-1968?	sight	Point (487912,5186183) +/- 500m.
345193	Idacarabus troglodytes	cave beetle (precipitous bluff)	r		A Clarke (1669)	27-Feb-1968?	sight	Point (487912,5186183) +/- 500m.
345176	Idacarabus troglodytes	cave beetle (precipitous bluff)	r		A Clarke (1669)	03-Jul-1988?	sight	Point (487912,5186183) +/- 500m.
346688	Idacarabus troglodytes	cave beetle (precipitous bluff)	r		A Clarke (1669)	25-Jun-1989?	sight	Point (487912,5186183) +/- 500m.
345278	Idacarabus troglodytes	cave beetle (precipitous bluff)	r		A Clarke (1669)	22-Aug-1985?	sight	Point (487912,5186183) +/- 500m.
345195	Idacarabus troglodytes	cave beetle (precipitous bluff)	r		A Clarke (1669)	23-Mar-1969?	sight	Point (487912,5186183) +/- 500m.
346680	Idacarabus troglodytes	cave beetle (precipitous bluff)	r		A Clarke (1669)	29-Mar-1987?	sight	Point (489412,5188483) +/- 500m.
1200458	Idacarabus troglodytes	cave beetle (precipitous bluff)	r		Arthur Clarke (1669)	26-Jan-1994	sight	Point (488780,5188600) +/- 500m.
1200453	Idacarabus troglodytes	cave beetle (precipitous bluff)	r		Arthur Clarke (1669)	07-Sep-1986	sight	Point (488780,5188600) +/- 500m.
1200455	Idacarabus troglodytes	cave beetle (precipitous bluff)	r		Arthur Clarke (1669)	25-Jun-1989	sight	Point (488780,5188600) +/- 500m.
1200447	Idacarabus troglodytes	cave beetle (precipitous bluff)	r		Arthur Clarke (1669)	22-Aug-1985	sight	Point (488780,5188600) +/- 500m.
1200452	Idacarabus troglodytes	cave beetle (precipitous bluff)	r		Arthur Clarke (1669)	30-Mar-1986	sight	Point (488780,5188600) +/- 500m.
1200456	Idacarabus troglodytes	cave beetle (precipitous bluff)	r		Arthur Clarke (1669)	21-Oct-1988	sight	Point (488780,5188600) +/- 500m.
1200449	Idacarabus troglodytes	cave beetle (precipitous bluff)	r		Arthur Clarke (1669)	30-Nov-1985	sight	Point (488870,5188650) +/- 500m.

Threatened fauna within 5000 metres

Id	Species	Common name	Ss	Ns	Observers	Date	Obs type	Position (gda94)
1200451	Idacarabus troglodytes	cave beetle (precipitous bluff)	r		Arthur Clarke (1669)	12-Oct-1985	sight	Point (488870,5188650) +/- 500m.
1200463	Idacarabus troglodytes	cave beetle (precipitous bluff)	r		Stefan Eberhard (3474)	12-Jun-2005	sight	Point (488870,5188650) +/- 500m.
1200450	Idacarabus troglodytes	cave beetle (precipitous bluff)	r		Arthur Clarke (1669)	26-Oct-1985	sight	Point (488870,5188650) +/- 500m.
1200462	Idacarabus troglodytes	cave beetle (precipitous bluff)	r		R Swain (2190), Alistair Richardson (2595), Stefan Eberhard (3474)	16-Apr-1990	sight	Point (488870,5188650) +/- 500m.
1200465	Idacarabus troglodytes	cave beetle (precipitous bluff)	r		Stefan Eberhard (3474)	07-Apr-1986	sight	Point (488870,5188650) +/- 500m.
1200464	Idacarabus troglodytes	cave beetle (precipitous bluff)	r		Stefan Eberhard (3474)	05-Apr-1990	sight	Point (488870,5188650) +/- 500m.
1200459	Idacarabus troglodytes	cave beetle (precipitous bluff)	r		Arthur Clarke (1669)	19-Jan-1986	sight	Point (488750,5188750) +/- 500m.
1200461	Idacarabus troglodytes	cave beetle (precipitous bluff)	r		R Swain (2190), Alistair Richardson (2595), Stefan Eberhard (3474)	25-Mar-1989	sight	Point (488750,5188750) +/- 500m.
1200460	Idacarabus troglodytes	cave beetle (precipitous bluff)	r		Arthur Clarke (1669)	01-Apr-1986	sight	Point (488750,5188750) +/- 500m.
1200446	Idacarabus troglodytes	cave beetle (precipitous bluff)	r		Arthur Clarke (1669)	21-Jan-1985	sight	Point (488750,5188750) +/- 500m.
1200457	Idacarabus troglodytes	cave beetle (precipitous bluff)	r		Arthur Clarke (1669)	07-Sep-1986	sight	Point (488750,5188750) +/- 500m.
1200445	Idacarabus troglodytes	cave beetle (precipitous bluff)	r		Arthur Clarke (1669)	13-Feb-1971	sight	Point (488750,5188750) +/- 500m.
1200448	Idacarabus troglodytes	cave beetle (precipitous bluff)	r		Arthur Clarke (1669)	24-Mar-1985	sight	Point (488750,5188750) +/- 500m.
1200454	Idacarabus troglodytes	cave beetle (precipitous bluff)	r		Arthur Clarke (1669)	29-Mar-1987	sight	Point (488930,5188830) +/- 500m.
346621	Idacarabus troglodytes	cave beetle (precipitous bluff)	r		A Clarke (1669)	12-Oct-1985?	sight	Point (488812,5186683) +/- 500m.
345285	Idacarabus troglodytes	cave beetle (precipitous bluff)	r		A Clarke (1669)	26-Oct-1985?	sight	Point (488812,5186683) +/- 500m.
346561	Idacarabus troglodytes	cave beetle (precipitous bluff)	r		A Clarke (1669)	16-Apr-1990?	sight	Point (488812,5186683) +/- 500m.
534097	Idacarabus troglodytes	cave beetle (precipitous bluff)	r		Stefan Eberhard (3474)	1990	sight	Point (488812,5186683) +/- 100m.
534098	Idacarabus troglodytes	cave beetle (precipitous bluff)	r		Stefan Eberhard (3474)	05-Apr-1990	sight	Point (488812,5186683) +/- 100m.
346597	Idacarabus troglodytes	cave beetle (precipitous bluff)	r		A Clarke (1669)	30-Nov-1985?	sight	Point (488812,5186683) +/- 500m.
524459	Idacarabus troglodytes	cave beetle (precipitous bluff)	r		Stefan Eberhard (3474)	07-Apr-1986	sight	Point (488812,5186683) +/- 100m.
345313	Idacarabus troglodytes	cave beetle (precipitous bluff)	r		A Clarke (1669)	05-Apr-1990?	sight	Point (488812,5186683) +/- 500m.
890977	Idacarabus troglodytes	cave beetle (precipitous bluff)	r		S Eberhard (2279)	01-Jan-1991?	sight	Point (488112,5185683) +/- 100m.
346503	Idacarabus troglodytes	cave beetle (precipitous bluff)	r		A Clarke (1669)	21-Aug-1990?	sight	Point (487912,5186183) +/- 500m.
346500	Idacarabus troglodytes	cave beetle (precipitous bluff)	r		A Clarke (1669)	19-Aug-1974?	sight	Point (487912,5186183) +/- 500m.
345173	Idacarabus troglodytes	cave beetle (precipitous bluff)	r		A Clarke (1669)	24-May-1969?	sight	Point (487912,5186183) +/- 500m.
346704	Idacarabus troglodytes	cave beetle (precipitous bluff)	r		A Clarke (1669)	21-Oct-1988?	sight	Point (487912,5186183) +/- 500m.
345371	Idacarabus troglodytes	cave beetle (precipitous bluff)	r		A Clarke (1669)	26-Jan-1994?	sight	Point (487912,5186183) +/- 500m.
345194	Idacarabus troglodytes	cave beetle (precipitous bluff)	r		A Clarke (1669)	23-Apr-1972?	sight	Point (487912,5186183) +/- 500m.
345340	Idacarabus troglodytes	cave beetle (precipitous bluff)	r		A Clarke (1669)	07-Sep-1986?	sight	Point (487912,5186183) +/- 500m.
345307	Idacarabus troglodytes	cave beetle (precipitous bluff)	r		A Clarke (1669)	30-Mar-1986?	sight	Point (487912,5186183) +/- 500m.
346535	Idacarabus troglodytes	cave beetle (precipitous bluff)	r		A Clarke (1669)	24-Jun-1967?	sight	Point (487912,5186183) +/- 500m.
346482	Idacarabus troglodytes	cave beetle (precipitous bluff)	r		A Clarke (1669)	22-Mar-1969?	sight	Point (487912,5186183) +/- 500m.

Threatened fauna within 5000 metres

Id	Species	Common name	Ss	Ns	Observers	Date	Obs type	Position (gda94)
345197	Idacarabus troglodytes	cave beetle (precipitous bluff)	r		A Clarke (1669)	26-Apr-1987?	sight	Point (487912,5186183) +/- 500m.
345192	Idacarabus troglodytes	cave beetle (precipitous bluff)	r		A Clarke (1669)	18-May-1968?	sight	Point (487912,5186183) +/- 500m.
345172	Idacarabus troglodytes	cave beetle (precipitous bluff)	r		A Clarke (1669)	02-Jan-1971?	sight	Point (487912,5186183) +/- 500m.
345315	Idacarabus troglodytes	cave beetle (precipitous bluff)	r		A Clarke (1669)	04-May-1990?	sight	Point (488812,5186683) +/- 500m.
345314	Idacarabus troglodytes	cave beetle (precipitous bluff)	r		A Clarke (1669)	07-Apr-1986?	sight	Point (488812,5186683) +/- 500m.
345283	Idacarabus troglodytes	cave beetle (precipitous bluff)	r		A Clarke (1669)	13-Feb-1971?	sight	Point (488812,5186683) +/- 500m.
345250	Idacarabus troglodytes	cave beetle (precipitous bluff)	r		A Clarke (1669)	01-Jan-1990?	sight	Point (488812,5186683) +/- 500m.
345949	Idacarabus troglodytes	cave beetle (precipitous bluff)	r		A Clarke (1669)	19-Jan-1986?	sight	Point (487612,5187683) +/- 500m.
345145	Idacarabus troglodytes	cave beetle (precipitous bluff)	r		A Clarke (1669)	01-Dec-1909?	sight	Point (487612,5187683) +/- 500m.
346563	Idacarabus troglodytes	cave beetle (precipitous bluff)	r		A Clarke (1669)	22-Aug-1985?	sight	Point (487612,5187683) +/- 500m.
346455	Idacarabus troglodytes	cave beetle (precipitous bluff)	r		A Clarke (1669)	25-Jul-1971?	sight	Point (487612,5187683) +/- 500m.
346417	Idacarabus troglodytes	cave beetle (precipitous bluff)	r		A Clarke (1669)	14-Jun-1969?	sight	Point (487612,5187683) +/- 500m.
346705	Idacarabus troglodytes	cave beetle (precipitous bluff)	r		A Clarke (1669)	07-Sep-1996?	sight	Point (487612,5187683) +/- 500m.
346475	Idacarabus troglodytes	cave beetle (precipitous bluff)	r		A Clarke (1669)	01-Jan-1909?	sight	Point (487612,5187683) +/- 500m.
346562	Idacarabus troglodytes	cave beetle (precipitous bluff)	r		A Clarke (1669)	21-Jan-1985?	sight	Point (487612,5187683) +/- 500m.
345221	Idacarabus troglodytes	cave beetle (precipitous bluff)	r		A Clarke (1669)	13-Jul-1985?	sight	Point (487912,5186183) +/- 500m.
346588	Idacarabus troglodytes	cave beetle (precipitous bluff)	r		A Clarke (1669)	24-Mar-1985?	sight	Point (487612,5187683) +/- 500m.
345167	Idacarabus troglodytes	cave beetle (precipitous bluff)	r		A Clarke (1669)	01-Feb-1957?	sight	Point (487612,5187683) +/- 500m.
345164	Idacarabus troglodytes	cave beetle (precipitous bluff)	r		A Clarke (1669)	01-Jan-1947?	sight	Point (487612,5187683) +/- 500m.
346542	Idacarabus troglodytes	cave beetle (precipitous bluff)	r		A Clarke (1669)	01-Apr-1984?	sight	Point (487612,5187683) +/- 500m.
347351	Idacarabus troglodytes	cave beetle (precipitous bluff)	r		A Clarke (1669)	01-Apr-1986?	sight	Point (487612,5187683) +/- 500m.
890978	Idacarabus troglodytes	cave beetle (precipitous bluff)	r		S Eberhard (2279)	01-Jan-1991?	sight	Point (487412,5187883) +/- 1000m.
890976	Idacarabus troglodytes	cave beetle (precipitous bluff)	r		S Eberhard (2279)	01-Jan-1991?	sight	Point (487712,5187883) +/- 100m.
705146	Lathamus discolor	swift parrot	e	EN	- Unknown (21598)	18-Sep-1979?	sight	Point (493365,5193076) +/- 18500m.
674218	Lathamus discolor	swift parrot	e	EN	- Unknown (21598)	31-Aug-1978?	sight	Point (493365,5193076) +/- 18500m.
643525	Lathamus discolor	swift parrot	e	EN	- Unknown (21598)	30-Dec-1977?	sight	Point (493365,5193076) +/- 18500m.
870860	Lathamus discolor	swift parrot	e	EN	Peter Brown (1919)	17-Oct-1987?	sight	Point (495912,5189883) +/- 100m.
870857	Lathamus discolor	swift parrot	e	EN	Peter Brown (1919)	17-Oct-1987?	sight	Point (493012,5189883) +/- 100m.
846692	Lathamus discolor	swift parrot	e	EN	Ray Brereton (2095)	16-Oct-1983?	sight	Point (493012,5189883) +/- 1000m.
689504	Lathamus discolor	swift parrot	e	EN	- Unknown (21598)	06-Mar-1979?	sight	Point (493365,5193076) +/- 18500m.
360102	Lathamus discolor	swift parrot	e	EN	- Unknown (21598)	14-Nov-1996?	sight	Point (495812,5189883) +/- 100m.
846699	Lathamus discolor	swift parrot	e	EN	Ray Brereton (2095)	16-Oct-1983?	sight	Point (495912,5189883) +/- 1000m.
1084159	Lissotes menalcas	mt. mangana stag beetle	v		C McCoull (2049)	Jul-2006	sight	Point (488792,5190718) +/- 100m.
1076223	Lissotes menalcas	mt. mangana stag beetle	v		Belinda Yaxley (16444)	09-Aug-2006	sight	Point (487871,5191105) +/- 100m.
890970	Lissotes menalcas	mt. mangana stag beetle	v		B Moore (3902)	27-Apr-1995?	sight	Point (493212,5193083) +/- 2000m.

Threatened fauna within 5000 metres

Id	Species	Common name	Ss	Ns	Observers	Date	Obs type	Position (gda94)
345232	Olgania excavata	cave spider (bubs hill cave)	r		A Clarke (1669)	24-Mar-1989?	sight	Point (486812,5186883) +/- 500m.
1216945	Oxyethira mienica	caddis fly (ouse river)	r		Laurie Cook (6862)	05-Jan-2000	sight	Point (489612,5193583) +/- 100m.
953025	Patiriella vivipara	live-bearing seastar	pv	PVU	Colin Shepherd (3267),Eric Brain (7100)	23-Oct-2006	sight	Point (494955,5185348) +/- 10m.
953022	Patiriella vivipara	live-bearing seastar	pv	PVU	Colin Shepherd (3267),Eric Brain (7100)	23-Oct-2006	sight	Point (496151,5185989) +/- 10m.
953024	Patiriella vivipara	live-bearing seastar	pv	PVU	Colin Shepherd (3267),Eric Brain (7100)	23-Oct-2006	sight	Point (495160,5185754) +/- 10m.
953023	Patiriella vivipara	live-bearing seastar	pv	PVU	Colin Shepherd (3267),Eric Brain (7100)	23-Oct-2006	sight	Point (495918,5186046) +/- 10m.
953021	Patiriella vivipara	live-bearing seastar	pv	PVU	Colin Shepherd (3267),Eric Brain (7100)	23-Oct-2006	sight	Point (495452,5185662) +/- 10m.
1234946	Patiriella vivipara	live-bearing seastar	pv	PVU	Michael Garner (1665)	13-Apr-2006	sight	Point (494573,5184478) +/- 100m.
742817	Perameles gunnii	eastern barred bandicoot		VU	Greg Hocking (7572)	31-May-1992	sight	Point (494574,5192974) +/- 100m.
1037220	Sarcophilus harrisii	tasmanian devil	e	EN	- Unknown (21598)	25-Mar-2005	sight	Point (490275,5193955) +/- 7m.
1041902	Sarcophilus harrisii	tasmanian devil	e	EN	Jim Richey (18587)	25-Mar-2005	sight	Point (491096,5194032) +/- 7m.
1028121	Sarcophilus harrisii	tasmanian devil	e	EN	- Unknown (21598)	22-Mar-2005	sight	Point (491096,5194032) +/- 7m.
1040784	Sarcophilus harrisii	tasmanian devil	e	EN	- Unknown (21598)	24-Mar-2005	sight	Point (491096,5194032) +/- 7m.
1038882	Sarcophilus harrisii	tasmanian devil	e	EN	- Unknown (21598)	22-Mar-2005	sight	Point (491361,5194266) +/- 7m.
1039360	Sarcophilus harrisii	tasmanian devil	e	EN	- Unknown (21598)	26-Mar-2005	sight	Point (491361,5194266) +/- 7m.
1027276	Sarcophilus harrisii	tasmanian devil	e	EN	- Unknown (21598)	22-Mar-2005	sight	Point (490275,5193955) +/- 7m.
1224388	Sarcophilus harrisii	tasmanian devil	e	EN	Susan Smith (22289)	14-Mar-2011	sight	Point (493388,5193320) +/- 100m.
1224389	Sarcophilus harrisii	tasmanian devil	e	EN	Susan Smith (22289)	10-Mar-2011	sight	Point (493388,5193320) +/- 100m.
1246402	Sarcophilus harrisii	tasmanian devil	e	EN	David Skinner (23014)	18-Nov-2011	sight	Point (494204,5193090) +/- 300m.
1041130	Sarcophilus harrisii	tasmanian devil	e	EN	- Unknown (21598)	22-Mar-2005	sight	Point (492441,5193145) +/- 7m.
1031890	Sarcophilus harrisii	tasmanian devil	e	EN	- Unknown (21598)	11-Feb-2005	sight	Point (492441,5193145) +/- 7m.
1035467	Sarcophilus harrisii	tasmanian devil	e	EN	- Unknown (21598)	22-Mar-2005	sight	Point (491024,5193453) +/- 7m.
1028408	Sarcophilus harrisii	tasmanian devil	e	EN	- Unknown (21598)	09-Feb-2005	sight	Point (491045,5193109) +/- 7m.
1037218	Sarcophilus harrisii	tasmanian devil	e	EN	- Unknown (21598)	22-Mar-2005	sight	Point (491045,5193109) +/- 7m.
1031983	Sarcophilus harrisii	tasmanian devil	e	EN	- Unknown (21598)	22-Mar-2005	sight	Point (491990,5193316) +/- 7m.
1160220	Sarcophilus harrisii	tasmanian devil	e	EN	Shannon Troy (12201)	Nov-2009	sight	Point (490491,5192842) +/- 5m.
1160219	Sarcophilus harrisii	tasmanian devil	e	EN	Shannon Troy (12201)	Nov-2009	sight	Point (489933,5193024) +/- 5m.
1160212	Sarcophilus harrisii	tasmanian devil	e	EN	Shannon Troy (12201)	23-Nov-2009	sight	Point (489877,5193262) +/- 5m.
1160193	Sarcophilus harrisii	tasmanian devil	e	EN	Shannon Troy (12201)	Dec-2009	fur	Point (489877,5193262) +/- 5m.
1043980	Sarcophilus harrisii	tasmanian devil	e	EN	Billie Lazenby (8543)	03-Feb-2005	sight	Point (492358,5188194) +/- 7m.
1043821	Sarcophilus harrisii	tasmanian devil	e	EN	- Unknown (21598)	31-Jan-2005	sight	Point (492358,5188194) +/- 7m.
1160211	Sarcophilus harrisii	tasmanian devil	e	EN	Shannon Troy (12201)	23-Nov-2009	sight	Point (492657,5188122) +/- 5m.
1160204	Sarcophilus harrisii	tasmanian devil	e	EN	Shannon Troy (12201)	20-Nov-2009	sight	Point (492657,5188122) +/- 5m.

Threatened fauna within 5000 metres

Id	Species	Common name	Ss	Ns	Observers	Date	Obs type	Position (gda94)
1160208	Sarcophilus harrisii	tasmanian devil	e	EN	Shannon Troy (12201)	21-Nov-2009	sight	Point (492657,5188122) +/- 5m.
1039081	Sarcophilus harrisii	tasmanian devil	e	EN	STTD Volunteers (18629)	29-Jan-2005	sight	Point (492916,5189431) +/- 7m.
1025349	Sarcophilus harrisii	tasmanian devil	e	EN	- Unknown (21598)	31-Jan-2005	sight	Point (492916,5189431) +/- 7m.
1043500	Sarcophilus harrisii	tasmanian devil	e	EN	- Unknown (21598)	02-Feb-2005	sight	Point (492916,5189431) +/- 7m.
1031678	Sarcophilus harrisii	tasmanian devil	e	EN	- Unknown (21598)	29-Jan-2005	sight	Point (492461,5189597) +/- 7m.
1030498	Sarcophilus harrisii	tasmanian devil	e	EN	- Unknown (21598)	01-Feb-2005	sight	Point (492461,5189597) +/- 7m.
1042407	Sarcophilus harrisii	tasmanian devil	e	EN	- Unknown (21598)	31-Jan-2005	sight	Point (492461,5189597) +/- 7m.
1036104	Sarcophilus harrisii	tasmanian devil	e	EN	STTD Volunteers (18629)	28-Jan-2005	sight	Point (492461,5189597) +/- 7m.
1031356	Sarcophilus harrisii	tasmanian devil	e	EN	- Unknown (21598)	22-Mar-2005	sight	Point (493044,5189635) +/- 7m.
1030564	Sarcophilus harrisii	tasmanian devil	e	EN	- Unknown (21598)	22-Mar-2005	sight	Point (492547,5189751) +/- 7m.
1160221	Sarcophilus harrisii	tasmanian devil	e	EN	Shannon Troy (12201)	Nov-2009	sight	Point (492753,5188239) +/- 5m.
1160195	Sarcophilus harrisii	tasmanian devil	e	EN	Shannon Troy (12201)	Dec-2009	fur	Point (492634,5188306) +/- 5m.
1160216	Sarcophilus harrisii	tasmanian devil	e	EN	Shannon Troy (12201)	24-Nov-2009	sight	Point (492634,5188306) +/- 5m.
1160218	Sarcophilus harrisii	tasmanian devil	e	EN	Shannon Troy (12201)	25-Nov-2009	sight	Point (492634,5188306) +/- 5m.
1043680	Sarcophilus harrisii	tasmanian devil	e	EN	Clare Hawkins (8562)	09-Feb-2005	sight	Point (492471,5188384) +/- 7m.
1033332	Sarcophilus harrisii	tasmanian devil	e	EN	- Unknown (21598)	22-Mar-2005	sight	Point (492471,5188384) +/- 7m.
1029673	Sarcophilus harrisii	tasmanian devil	e	EN	- Unknown (21598)	25-Mar-2005	sight	Point (492471,5188384) +/- 7m.
1031764	Sarcophilus harrisii	tasmanian devil	e	EN	- Unknown (21598)	22-Mar-2005	sight	Point (492259,5188443) +/- 7m.
1160194	Sarcophilus harrisii	tasmanian devil	e	EN	Shannon Troy (12201)	Dec-2009	fur	Point (492259,5188445) +/- 5m.
1160207	Sarcophilus harrisii	tasmanian devil	e	EN	Shannon Troy (12201)	21-Nov-2009	sight	Point (492431,5188561) +/- 5m.
1160222	Sarcophilus harrisii	tasmanian devil	e	EN	Shannon Troy (12201)	Nov-2009	sight	Point (492431,5188561) +/- 5m.
1160191	Sarcophilus harrisii	tasmanian devil	e	EN	Shannon Troy (12201)	Dec-2009	fur	Point (492431,5188561) +/- 5m.
1204684	Sarcophilus harrisii	tasmanian devil	e	EN	A Thompson (2759)	30-Jan-2011	sight	Point (492351,5191932) +/- 200m.
1231677	Sarcophilus harrisii	tasmanian devil	e	EN	Rochelle ? (22321)	30-Jan-2011	sight	Point (492284,5192113) +/- 100m.
1075910	Sarcophilus harrisii	tasmanian devil	e	EN	David Cameron (9848)	23-Dec-2003	sight	Point (492255,5192240) +/- 0m.
1160213	Sarcophilus harrisii	tasmanian devil	e	EN	Shannon Troy (12201)	24-Nov-2009	sight	Point (492259,5188445) +/- 5m.
1037615	Sarcophilus harrisii	tasmanian devil	e	EN	- Unknown (21598)	01-Feb-2005	sight	Point (490963,5187391) +/- 7m.
1035147	Sarcophilus harrisii	tasmanian devil	e	EN	- Unknown (21598)	25-Mar-2005	sight	Point (491540,5188009) +/- 7m.
1032529	Sarcophilus harrisii	tasmanian devil	e	EN	- Unknown (21598)	10-Feb-2005	sight	Point (491540,5188009) +/- 7m.
1043433	Sarcophilus harrisii	tasmanian devil	e	EN	- Unknown (21598)	22-Mar-2005	sight	Point (491540,5188009) +/- 7m.
1035610	Sarcophilus harrisii	tasmanian devil	e	EN	Jim Richey (18587)	24-Mar-2005	sight	Point (491540,5188009) +/- 7m.
1027007	Sarcophilus harrisii	tasmanian devil	e	EN	- Unknown (21598)	11-Feb-2005	sight	Point (491540,5188009) +/- 7m.
1029825	Sarcophilus harrisii	tasmanian devil	e	EN	- Unknown (21598)	26-Mar-2005	sight	Point (491540,5188009) +/- 7m.
1043509	Sarcophilus harrisii	tasmanian devil	e	EN	- Unknown (21598)	05-Feb-2005	sight	Point (492142,5188246) +/- 7m.

Threatened fauna within 5000 metres

Id	Species	Common name	Ss	Ns	Observers	Date	Obs type	Position (gda94)
1026648	Sarcophilus harrisii	tasmanian devil	e	EN	STTD Volunteers (18629)	29-Jan-2005	sight	Point (492142,5188246) +/- 7m.
1030554	Sarcophilus harrisii	tasmanian devil	e	EN	- Unknown (21598)	30-Jan-2005	sight	Point (492142,5188246) +/- 7m.
1040556	Sarcophilus harrisii	tasmanian devil	e	EN	- Unknown (21598)	01-Feb-2005	sight	Point (492142,5188246) +/- 7m.
1206629	Sarcophilus harrisii	tasmanian devil	e	EN	Sarah Peck (20158)	01-Mar-2011	sight	Point (496919,5190506) +/- 100m.
1041428	Sarcophilus harrisii	tasmanian devil	e	EN	- Unknown (21598)	03-Feb-2005	sight	Point (492113,5186583) +/- 7m.
1042301	Sarcophilus harrisii	tasmanian devil	e	EN	- Unknown (21598)	04-Feb-2005	sight	Point (492113,5186583) +/- 7m.
1041476	Sarcophilus harrisii	tasmanian devil	e	EN	- Unknown (21598)	01-Feb-2005	sight	Point (492113,5186583) +/- 7m.
1043002	Sarcophilus harrisii	tasmanian devil	e	EN	Clare Hawkins (8562)	08-Feb-2005	sight	Point (492238,5186785) +/- 7m.
1044373	Sarcophilus harrisii	tasmanian devil	e	EN	- Unknown (21598)	22-Mar-2005	sight	Point (492238,5186785) +/- 7m.
1028282	Sarcophilus harrisii	tasmanian devil	e	EN	- Unknown (21598)	03-Feb-2005	sight	Point (491287,5187042) +/- 7m.
1030951	Sarcophilus harrisii	tasmanian devil	e	EN	- Unknown (21598)	05-Feb-2005	sight	Point (491467,5187010) +/- 7m.
1026175	Sarcophilus harrisii	tasmanian devil	e	EN	- Unknown (21598)	02-Feb-2005	sight	Point (491467,5187010) +/- 7m.
1032383	Sarcophilus harrisii	tasmanian devil	e	EN	STTD Volunteers (18629)	29-Jan-2005	sight	Point (491891,5187133) +/- 7m.
1030382	Sarcophilus harrisii	tasmanian devil	e	EN	- Unknown (21598)	05-Feb-2005	sight	Point (491891,5187133) +/- 7m.
1031530	Sarcophilus harrisii	tasmanian devil	e	EN	STTD Volunteers (18629)	30-Jan-2005	sight	Point (491891,5187133) +/- 7m.
1029678	Sarcophilus harrisii	tasmanian devil	e	EN	- Unknown (21598)	22-Mar-2005	sight	Point (491996,5187315) +/- 7m.
1042227	Sarcophilus harrisii	tasmanian devil	e	EN	- Unknown (21598)	06-Feb-2005	sight	Point (491197,5186101) +/- 7m.
1043567	Sarcophilus harrisii	tasmanian devil	e	EN	- Unknown (21598)	05-Feb-2005	sight	Point (491197,5186101) +/- 7m.
1044452	Sarcophilus harrisii	tasmanian devil	e	EN	- Unknown (21598)	05-Feb-2005	sight	Point (491371,5185970) +/- 7m.
1038077	Sarcophilus harrisii	tasmanian devil	e	EN	- Unknown (21598)	31-Jan-2005	sight	Point (491371,5185970) +/- 7m.
1026545	Sarcophilus harrisii	tasmanian devil	e	EN	- Unknown (21598)	06-Feb-2005	sight	Point (491716,5185933) +/- 7m.
1039422	Sarcophilus harrisii	tasmanian devil	e	EN	- Unknown (21598)	02-Feb-2005	sight	Point (491716,5185933) +/- 7m.
1039694	Sarcophilus harrisii	tasmanian devil	e	EN	- Unknown (21598)	31-Jan-2005	sight	Point (492153,5185778) +/- 7m.
1043694	Sarcophilus harrisii	tasmanian devil	e	EN	Billie Lazenby (8543)	02-Feb-2005	sight	Point (492153,5185778) +/- 7m.
1036113	Sarcophilus harrisii	tasmanian devil	e	EN	Clare Hawkins (8562)	10-Feb-2005	sight	Point (492286,5185961) +/- 7m.
1032710	Sarcophilus harrisii	tasmanian devil	e	EN	- Unknown (21598)	22-Mar-2005	sight	Point (492286,5185961) +/- 7m.
1039604	Sarcophilus harrisii	tasmanian devil	e	EN	- Unknown (21598)	22-Mar-2005	sight	Point (492435,5183772) +/- 7m.
1025962	Sarcophilus harrisii	tasmanian devil	e	EN	Jim Richey (18587)	25-Mar-2005	sight	Point (492435,5183772) +/- 7m.
1027830	Sarcophilus harrisii	tasmanian devil	e	EN	- Unknown (21598)	08-Feb-2005	sight	Point (492435,5183772) +/- 7m.
1028329	Sarcophilus harrisii	tasmanian devil	e	EN	- Unknown (21598)	24-Mar-2005	sight	Point (492435,5183772) +/- 7m.
1037874	Sarcophilus harrisii	tasmanian devil	e	EN	- Unknown (21598)	04-Feb-2005	sight	Point (492066,5183861) +/- 7m.
1039447	Sarcophilus harrisii	tasmanian devil	e	EN	- Unknown (21598)	30-Jan-2005	sight	Point (492066,5183861) +/- 7m.
1039602	Sarcophilus harrisii	tasmanian devil	e	EN	- Unknown (21598)	24-Mar-2005	sight	Point (492177,5184005) +/- 7m.
1035109	Sarcophilus harrisii	tasmanian devil	e	EN	- Unknown (21598)	22-Mar-2005	sight	Point (492177,5184005) +/- 7m.

Threatened fauna within 5000 metres

Id	Species	Common name	Ss	Ns	Observers	Date	Obs type	Position (gda94)
1032629	Sarcophilus harrisii	tasmanian devil	e	EN	- Unknown (21598)	05-Feb-2005	sight	Point (492029,5184079) +/- 7m.
1042203	Sarcophilus harrisii	tasmanian devil	e	EN	- Unknown (21598)	05-Feb-2005	sight	Point (490787,5184237) +/- 7m.
1043098	Sarcophilus harrisii	tasmanian devil	e	EN	- Unknown (21598)	06-Feb-2005	sight	Point (490787,5184237) +/- 7m.
1043843	Sarcophilus harrisii	tasmanian devil	e	EN	Clare Hawkins (8562)	10-Feb-2005	sight	Point (492144,5184280) +/- 7m.
1034155	Sarcophilus harrisii	tasmanian devil	e	EN	- Unknown (21598)	22-Mar-2005	sight	Point (492144,5184280) +/- 7m.
1035555	Sarcophilus harrisii	tasmanian devil	e	EN	Clare Hawkins (8562)	06-Feb-2005	sight	Point (491923,5184356) +/- 7m.
1030761	Sarcophilus harrisii	tasmanian devil	e	EN	- Unknown (21598)	22-Mar-2005	sight	Point (492030,5184493) +/- 7m.
1034233	Sarcophilus harrisii	tasmanian devil	e	EN	- Unknown (21598)	09-Feb-2005	sight	Point (492030,5184493) +/- 7m.
1039539	Sarcophilus harrisii	tasmanian devil	e	EN	Jim Richey (18587)	24-Mar-2005	sight	Point (492030,5184493) +/- 7m.
1027299	Sarcophilus harrisii	tasmanian devil	e	EN	- Unknown (21598)	25-Mar-2005	sight	Point (492030,5184493) +/- 7m.
1036256	Sarcophilus harrisii	tasmanian devil	e	EN	- Unknown (21598)	05-Feb-2005	sight	Point (491087,5184774) +/- 7m.
1038373	Sarcophilus harrisii	tasmanian devil	e	EN	- Unknown (21598)	04-Feb-2005	sight	Point (491087,5184774) +/- 7m.
1043698	Sarcophilus harrisii	tasmanian devil	e	EN	- Unknown (21598)	30-Jan-2005	sight	Point (492090,5184986) +/- 7m.
1025602	Sarcophilus harrisii	tasmanian devil	e	EN	- Unknown (21598)	31-Jan-2005	sight	Point (492090,5184986) +/- 7m.
1038051	Sarcophilus harrisii	tasmanian devil	e	EN	- Unknown (21598)	22-Mar-2005	sight	Point (492217,5185162) +/- 7m.
1031790	Sarcophilus harrisii	tasmanian devil	e	EN	- Unknown (21598)	29-Jan-2005	sight	Point (492440,5182280) +/- 7m.
1043561	Sarcophilus harrisii	tasmanian devil	e	EN	Clare Hawkins (8562)	03-Feb-2005	sight	Point (492440,5182280) +/- 7m.
1040321	Sarcophilus harrisii	tasmanian devil	e	EN	STTD Volunteers (18629)	28-Jan-2005	sight	Point (492440,5182280) +/- 7m.
1038682	Sarcophilus harrisii	tasmanian devil	e	EN	- Unknown (21598)	05-Feb-2005	sight	Point (492440,5182280) +/- 7m.
1027345	Sarcophilus harrisii	tasmanian devil	e	EN	- Unknown (21598)	08-Feb-2005	sight	Point (492571,5182480) +/- 7m.
1027274	Sarcophilus harrisii	tasmanian devil	e	EN	- Unknown (21598)	22-Mar-2005	sight	Point (492571,5182480) +/- 7m.
1041575	Sarcophilus harrisii	tasmanian devil	e	EN	- Unknown (21598)	06-Oct-2007	car	Point (492571,5182480) +/- 7m.
1041303	Sarcophilus harrisii	tasmanian devil	e	EN	Clare Hawkins (8562)	04-Feb-2005	sight	Point (492066,5182902) +/- 7m.
1036284	Sarcophilus harrisii	tasmanian devil	e	EN	- Unknown (21598)	08-Feb-2005	sight	Point (492171,5183104) +/- 7m.
1042664	Sarcophilus harrisii	tasmanian devil	e	EN	- Unknown (21598)	22-Mar-2005	sight	Point (492171,5183104) +/- 7m.
1033418	Sarcophilus harrisii	tasmanian devil	e	EN	- Unknown (21598)	03-Feb-2005	sight	Point (492941,5183132) +/- 7m.
1027418	Sarcophilus harrisii	tasmanian devil	e	EN	- Unknown (21598)	04-Feb-2005	sight	Point (492941,5183132) +/- 7m.
1031010	Sarcophilus harrisii	tasmanian devil	e	EN	- Unknown (21598)	05-Feb-2005	sight	Point (492941,5183132) +/- 7m.
1028038	Sarcophilus harrisii	tasmanian devil	e	EN	- Unknown (21598)	08-Feb-2005	sight	Point (493073,5183277) +/- 7m.
1026490	Sarcophilus harrisii	tasmanian devil	e	EN	- Unknown (21598)	22-Mar-2005	sight	Point (493073,5183277) +/- 7m.
1033314	Sarcophilus harrisii	tasmanian devil	e	EN	- Unknown (21598)	05-Feb-2005	sight	Point (492587,5183480) +/- 7m.
1033694	Sarcophilus harrisii	tasmanian devil	e	EN	- Unknown (21598)	05-Feb-2005	sight	Point (492333,5183578) +/- 7m.
1029447	Sarcophilus harrisii	tasmanian devil	e	EN	STTD Volunteers (18629)	29-Jan-2005	sight	Point (492333,5183578) +/- 7m.
1029993	Sarcophilus harrisii	tasmanian devil	e	EN	- Unknown (21598)	08-Feb-2005	sight	Point (492705,5183663) +/- 7m.

Threatened fauna within 5000 metres

Id	Species	Common name	Ss	Ns	Observers	Date	Obs type	Position (gda94)
1033532	<i>Sarcophilus harrisii</i>	tasmanian devil	e	EN	- Unknown (21598)	22-Mar-2005	sight	Point (492705,5183663) +/- 7m.
1028879	<i>Sarcophilus harrisii</i>	tasmanian devil	e	EN	- Unknown (21598)	23-Mar-2005	sight	Point (492705,5183663) +/- 7m.
1030613	<i>Sarcophilus harrisii</i>	tasmanian devil	e	EN	- Unknown (21598)	24-Mar-2005	sight	Point (492705,5183663) +/- 7m.
1043519	<i>Sarcophilus harrisii</i>	tasmanian devil	e	EN	- Unknown (21598)	29-Jan-2005	sight	Point (491302,5182894) +/- 7m.
1030145	<i>Sarcophilus harrisii</i>	tasmanian devil	e	EN	- Unknown (21598)	01-Feb-2005	sight	Point (491302,5182894) +/- 7m.
1037084	<i>Sarcophilus harrisii</i>	tasmanian devil	e	EN	Billie Lazenby (8543)	02-Feb-2005	sight	Point (491302,5182894) +/- 7m.
1036926	<i>Sarcophilus harrisii</i>	tasmanian devil	e	EN	- Unknown (21598)	30-Jan-2005	sight	Point (492066,5182902) +/- 7m.
1041341	<i>Sarcophilus harrisii</i>	tasmanian devil	e	EN	STTD Volunteers (18629)	28-Jan-2005	sight	Point (492066,5182902) +/- 7m.
1026404	<i>Sarcophilus harrisii</i>	tasmanian devil	e	EN	- Unknown (21598)	22-Mar-2005	sight	Point (491158,5183126) +/- 7m.
1025974	<i>Sarcophilus harrisii</i>	tasmanian devil	e	EN	- Unknown (21598)	26-Mar-2005	sight	Point (491158,5183126) +/- 7m.
1027461	<i>Sarcophilus harrisii</i>	tasmanian devil	e	EN	- Unknown (21598)	08-Feb-2005	sight	Point (491158,5183126) +/- 7m.
1030092	<i>Sarcophilus harrisii</i>	tasmanian devil	e	EN	- Unknown (21598)	02-Feb-2005	sight	Point (490324,5182920) +/- 7m.
1042151	<i>Sarcophilus harrisii</i>	tasmanian devil	e	EN	STTD Volunteers (18629)	28-Jan-2005	sight	Point (490324,5182920) +/- 7m.
1027795	<i>Sarcophilus harrisii</i>	tasmanian devil	e	EN	- Unknown (21598)	08-Feb-2005	sight	Point (490455,5183093) +/- 7m.
1030234	<i>Sarcophilus harrisii</i>	tasmanian devil	e	EN	- Unknown (21598)	22-Mar-2005	sight	Point (490455,5183093) +/- 7m.
1160223	<i>Sarcophilus harrisii</i>	tasmanian devil	e	EN	Shannon Troy (12201)	Nov-2009	sight	Point (490123,5183467) +/- 5m.
1160203	<i>Sarcophilus harrisii</i>	tasmanian devil	e	EN	Shannon Troy (12201)	20-Nov-2009	sight	Point (490183,5183670) +/- 5m.
1160210	<i>Sarcophilus harrisii</i>	tasmanian devil	e	EN	Shannon Troy (12201)	23-Nov-2009	sight	Point (490183,5183670) +/- 5m.
1160189	<i>Sarcophilus harrisii</i>	tasmanian devil	e	EN	Shannon Troy (12201)	Dec-2009	fur	Point (490183,5183670) +/- 5m.
1160224	<i>Sarcophilus harrisii</i>	tasmanian devil	e	EN	Shannon Troy (12201)	Nov-2009	sight	Point (490004,5182899) +/- 5m.
896542	<i>Thylacinus cynocephalus</i>	thylacine	x	EX	R Skinne (2039)	01-Jan-1964?	sight	Point (493365,5193076) +/- 1850m.
1075599	<i>Tyto novaehollandiae</i>	masked owl	pe	PVU	Michael Kenneth Todd (10621)	09-Jul-2008	sight	Point (490590,5188976) +/- 10m.
351225	<i>Tyto novaehollandiae</i> subsp. <i>castanops</i>	masked owl (tasmanian)	e	VU	J Tulip (1373)	21-Sep-1996?	sight	Point (491612,5190683) +/- 1000m.

Unverified Records

Threatened fauna within 5000 metres (based on Habitat Mapping)

Species	Common name	Ss	Ns	Potential	Known	Core
<i>Lissotes menalcas</i>	mt. mangana stag beetle	v		1	1	0
<i>Aquila audax</i>	wedge-tailed eagle	pe	PEN	1	0	0
<i>Perameles gunnii</i>	eastern barred bandicoot		VU	1	0	0
<i>Lathamus discolor</i>	swift parrot	e	EN	9	9	9
<i>Litoria raniformis</i>	green and golden frog	v	VU	1	0	0
<i>Tyto novaehollandiae</i>	masked owl	pe	PVU	1	0	1
<i>Pardalotus quadragintus</i>	forty-spotted pardalote	e	EN	1	0	0
<i>Haliaeetus leucogaster</i>	white-bellied sea-eagle	v		1	0	0
<i>Accipiter novaehollandiae</i>	grey goshawk	e		1	0	1

Threatened fauna within 5000 metres

For more information about threatened species, please contact the Manager, Threatened Species Section.

Telephone: (03) 6233 8759

Email: ThreatenedSpecies.Enquiries@dpipwe.tas.gov.au

Address: GPO Box 44, Hobart, Tasmania, Australia, 7000

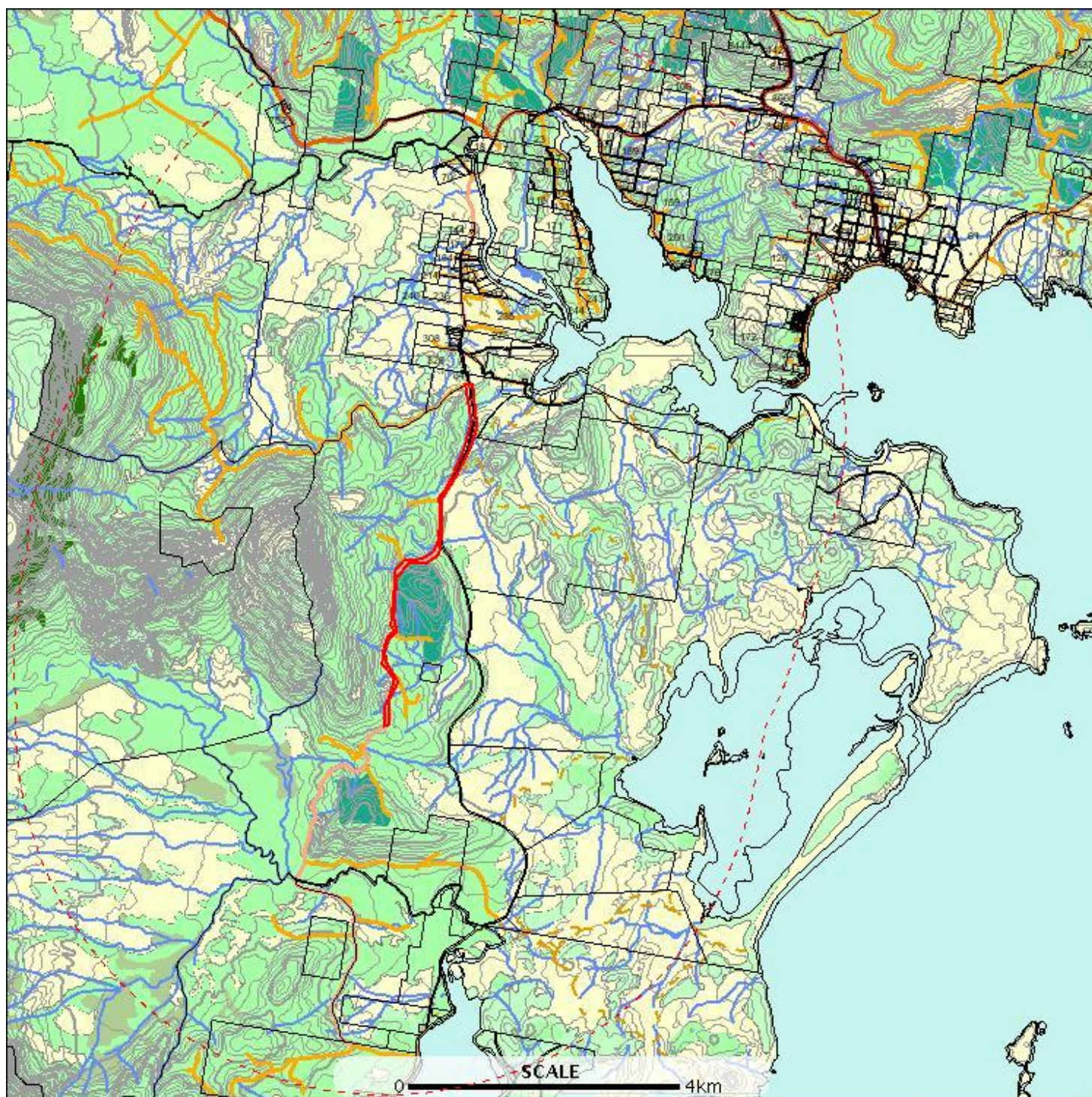
Raptor nests and sightings within 500 metres

*** No Raptor nests or sightings found within 500 metres. ***

Raptor nests and sightings within 5000 metres

E: 486028
N: 5194696

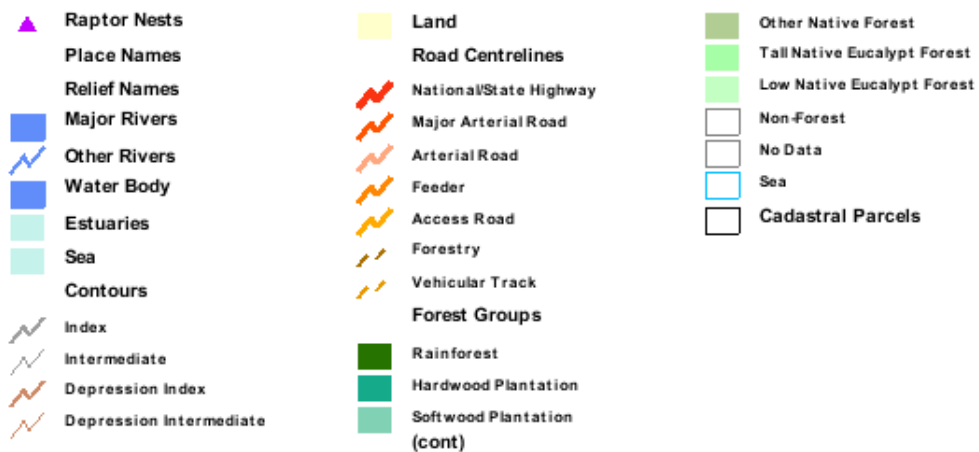
E: 497498
N: 5194696



E: 486028
N: 5179897

E: 497498
N: 5179897

Raptor nests and sightings within 5000 metres



Raptor nests and sightings within 5000 metres

Verified Records

Location id	Location foreign id	Observation id	Observer	Obs date	Obs type	Position (gda94)	Season	Nest productivity	Nest occupancy
		634646	- Unknown (21598)	30-Dec-1977?	sight	Point (493365,5193076) +/- 18500m.			
		726131	- Unknown (21598)	29-Feb-1980?	sight	Point (493365,5193076) +/- 18500m.			
		1083932	Veronica Tyquin (20991)	28-Oct-2009	nest	Point (492250,5183170) +/- 0m.			

Unverified Records