



ENDEAVOUR GEOPHYSICS


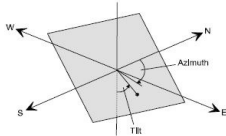
HARD ROCK COAL

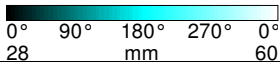
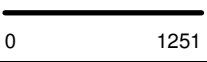
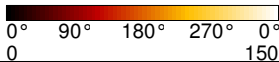
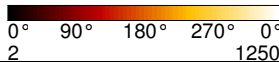
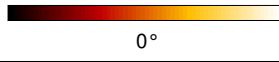
VR012

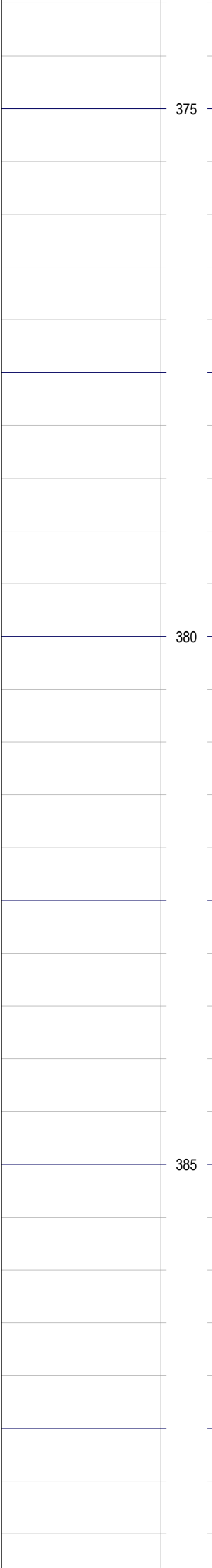
ACOUSTIC TELEVIEWER

1:50

LOCATION		HOLE ATTRIBUTES				LOGGING DETAILS			
LOCATION	FINGAL	DATE	28/09/2015			RECORDED BY	CALEB AMES		
EL		FLUID LEVEL	16.8 m			WITNESSED BY	RON GREGORY		
PROVINCE		FLUID TYPE	WATER			UNIT	EG025		
STATE	TASMANIA	DRILLED DEPTH	510 m			LOGGED DEPTH	509 m		
COUNTRY	AUSTRALIA	DATUM	GROUND LEVEL			INT LOGGED	372-509 m		
LATI		DRILLING COMPANY	SPAULDING			LOGGING RUNS			
LONG		DRILLING RIG							
GEODETIC DATUM	GDA94	BOREHOLE RECORD				TOOL	ID	START	FINISH
COORD	MGA55	TYPE	SIZE	FROM m	TO m	FDS(ROD)	717	500	0
EASTING	590067	DIAM	NQ	GL	TD	MST(OH)		428	0
NORTHING	5389095					FWS	S021	509	372
ELEVATION	m					ATV		428	372
SRVC	ENDEAVOUR GEOPHYSICS	CASING RECORD				FDS(OH)	717	510	372
WEB	www.endeavourgeo.com	TYPE	SIZE	FROM m	TO m	MST(OH)		510	445
COMMENTS CENTRALISERS COULD NOT BE USED THROUGH NQ RODS. SO CENTRALISERS WERE MADE TO CENTRALISE THE TOOL TO 57mm SO THE TOOL COULD FIT THROUGH THE RODS						ATV		510	445
		RODS	NQ	0	445				

ACOUSTIC TELEVIEWER - ABI40		
		
CALIBRATION	MNEUMONICS	ATTRIBUTES
ATV_CALIBRATION_DATE 30/07/2013		ATV_LENGTH 1700mm
ATV_MODEL ALT ABI-40		ATV_DIAMETER 40mm
ATV_SERIAL_NO 131009		ATV_MEASURING_POINT 0.165m
ATV_MARKER_POS 0		CALIPER_RESOLUTION 0.08mm
		ACOUSTIC_BEAM_WIDTH 1.5mm
		ATV_MEASUREMENT_RANGE 64mm-500mm
		ATV_INCLINATION_ACCURACY 0.5 degree
		ATV_AZIMUTH_ACCURACY 0.5 degree

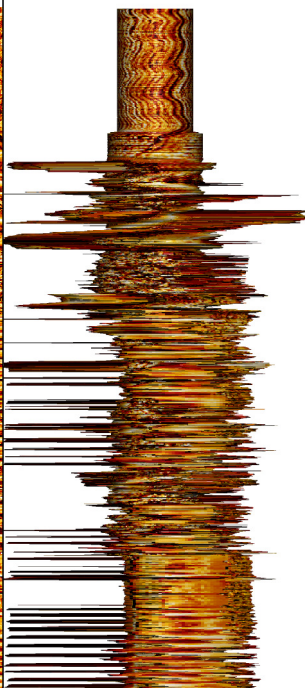
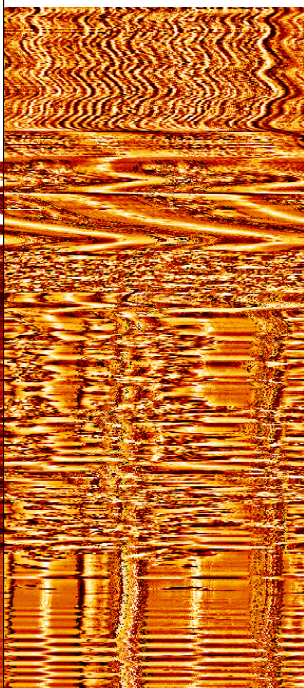
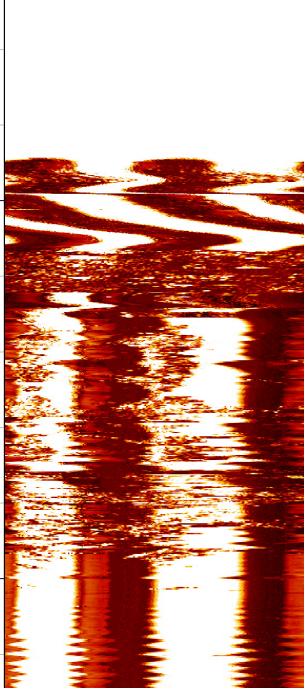
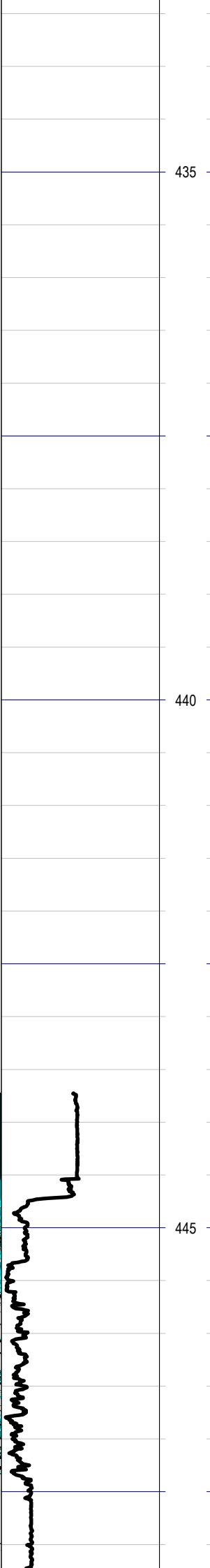
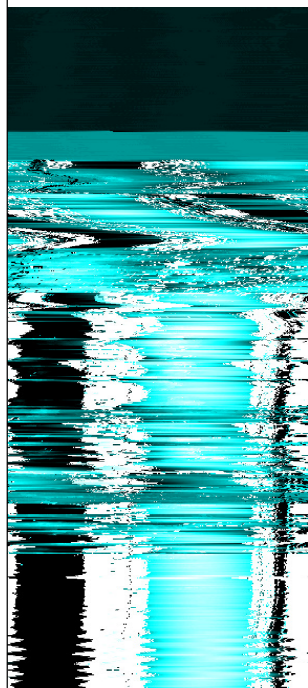
3D CALIPER RADIUS	REFLECTIVITY	Depth 1m:50m	AMPLITUDE	NORMALISED AMP	3D LOG
					
0° 90° 180° 270° 0° 28 mm 60	0 1251		0° 90° 180° 270° 0° 0 150	0° 90° 180° 270° 0° 2 1250	0°





A vertical axis with horizontal grid lines. The axis is labeled with the numbers 405, 410, and 415 on the right side. The axis is currently blank, with no data points or labels other than the grid line numbers.

A vertical axis with horizontal grid lines. The axis is labeled with the numbers 420, 425, and 430. The axis is oriented vertically, with the labels positioned to the right of the axis line. The grid lines are evenly spaced, with major lines corresponding to the labeled values and minor lines in between.



435

440

445

