



ENDEAVOUR GEOPHYSICS

HARD ROCK COAL

VR012

COMPOSITE LOG

1:25

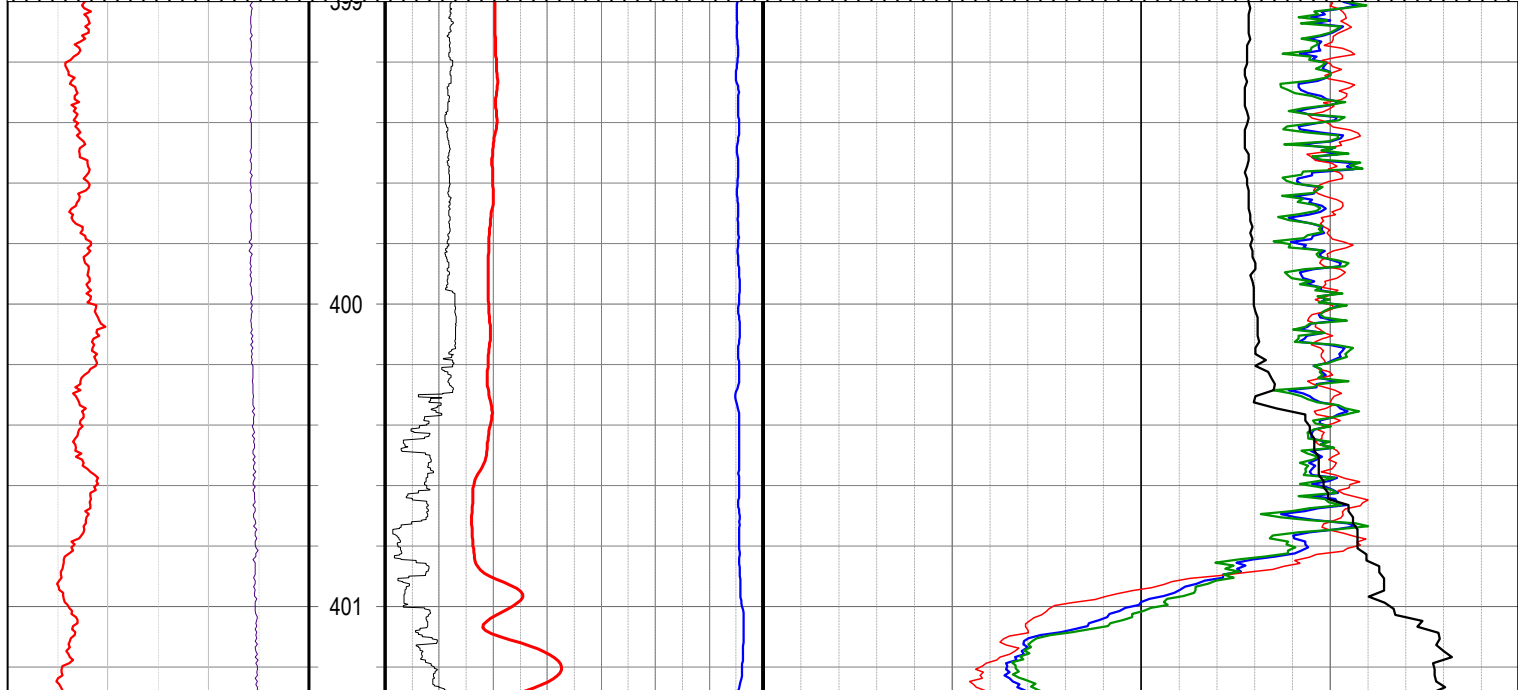
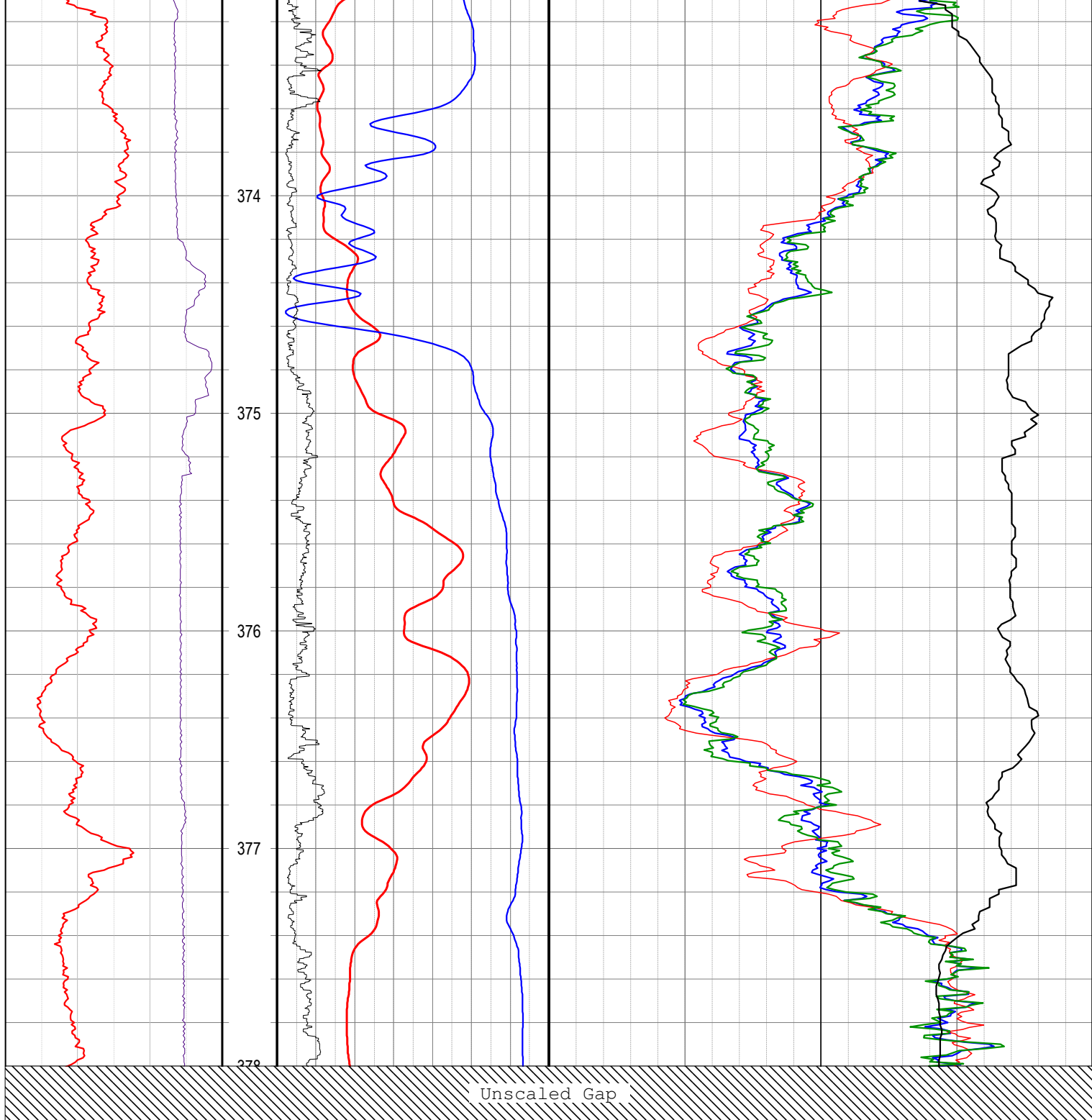
LOCATION		HOLE ATTRIBUTES		LOGGING DETAILS	
LOCATION	FINGAL	DATE	28/09/2015	RECORDED BY	CALEB AMES
EL		FLUID LEVEL	16.8 m	WITNESSED BY	RON GREGORY
PROVINCE		FLUID TYPE	WATER	UNIT	EG025
STATE	TASMANIA	DRILLED DEPTH	510 m	LOGGED DEPTH	509 m
COUNTRY	AUSTRALIA	DATUM	GROUND LEVEL	INT LOGGED	372-509 m
LATI		DRILLING COMPANY	SPAULDING	LOGGING RUNS	
LONG		DRILLING RIG			
GEODETIC DATUM	GDA94	BOREHOLE RECORD		TOOL	ID
COORD	MGA55			START	FINISH
EASTING	590067	TYPE	SIZE	FROM m	TO m
NORTHING	5389095	DIAM	NQ	GL	TD
ELEVATION	m	CASING RECORD		FDS(ROD)	717
SRVC	ENDEAVOUR GEOPHYSICS			MST(OH,ROD)	427
WEB	www.endeavourgeo.com	TYPE	SIZE	FWS	S021
COMMENTS		FROM m	TO m	ATV	427
OPEN HOLE SECTION AFTER RODS PULLED BACK TO 372m COMPOSITE LOG OF ALL LOGS		RODS	NQ	FDS(OH)	717
			0	MST(OH)	510
			372	ATV	510

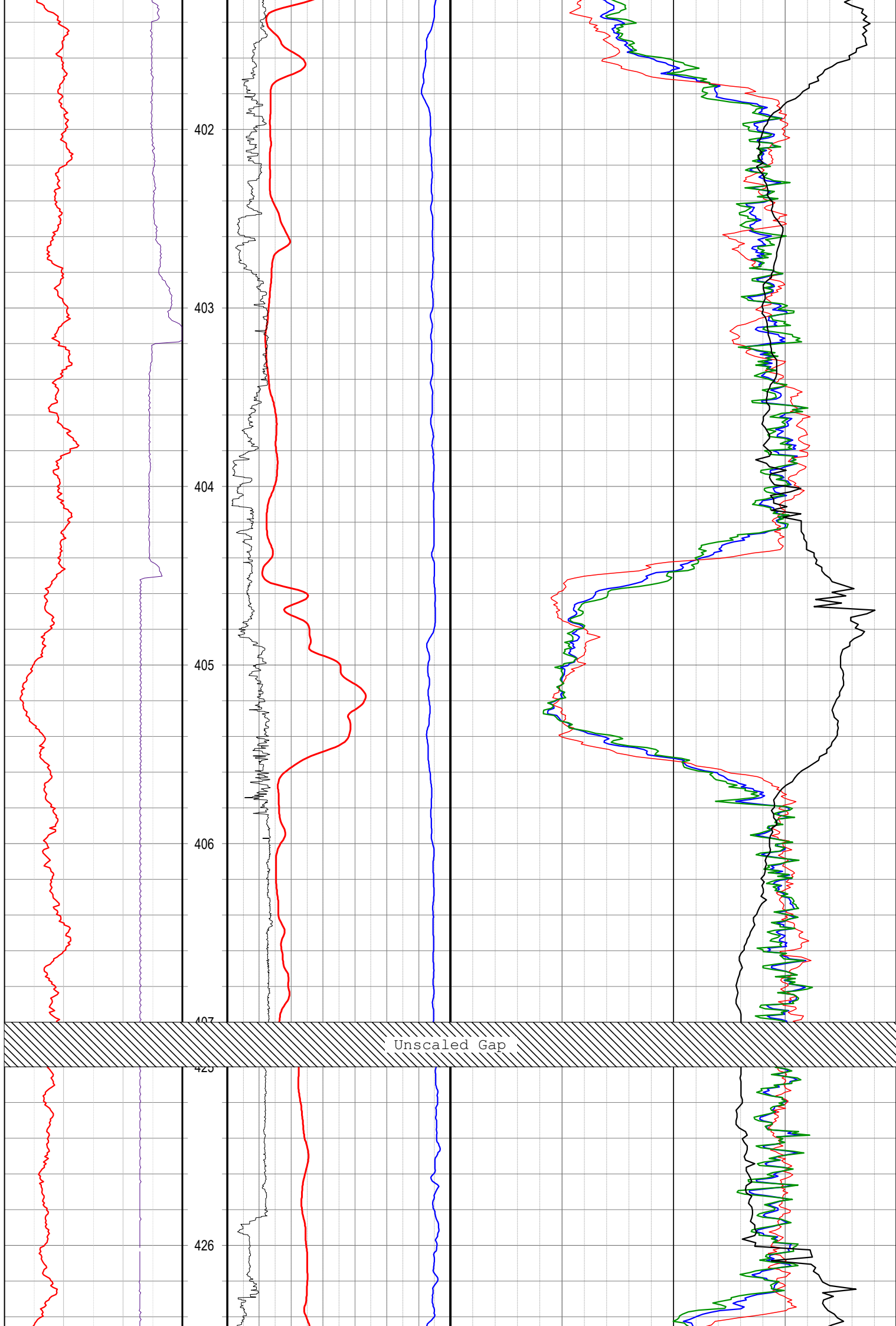
FORMATION DENSITY - FDS50

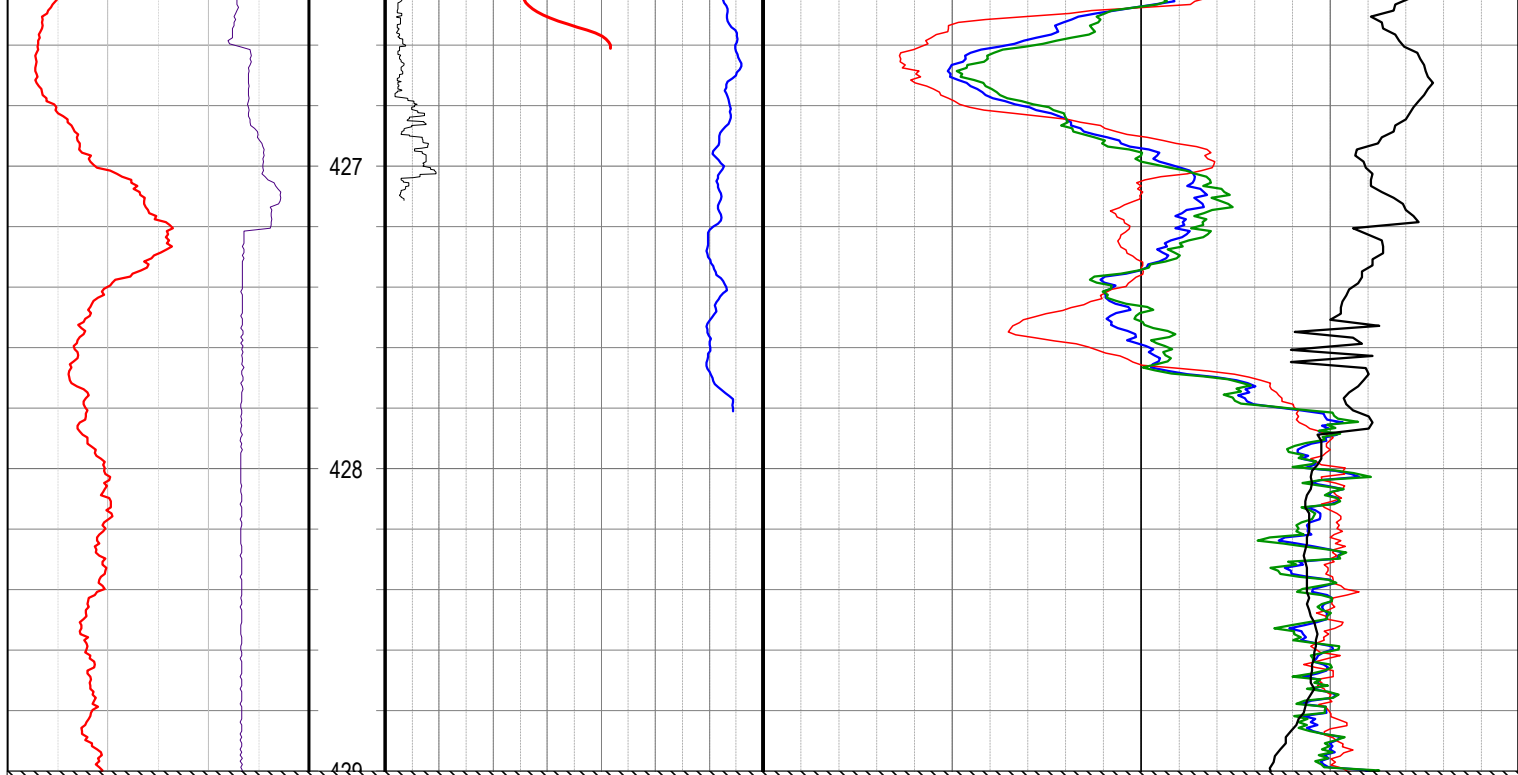


CALIBRATION		FDS_MNEUMONICS		ATTRIBUTES	
FDS_CALIBRATION_DATE	25/05/2015	GAMMA_RAW = Uncalibrated natural gamma raw counts	FDS_LENGTH	3080mm	
FDS_MODEL	ALT FDS-50	LSD_RAW = Long Spaced Density raw counts	FDS_DIAMETER	50mm	
FDS_SERIAL_NO	717	SSD_RAW = Short Spaced Density raw counts	FDS_CALIPER_RANGE	50-300mm	
FDS_SOURCE_NO	3500CO	BRD_RAW = Bed Resolution Density raw counts	FDS_LOGGING_SPEEDS	6m/min General	
FDS_SOURCE_TYPE	3.7GBq 137Cs	CALI_RAW = Caliper raw counts		3m/min Detailed	
LSD_CAL	-0.5189*Ln({RAW})+5.6866	GRDEN = Calibrated Gamma - API Units	FDS_RECEIVER_SPACING	48cm - LSD	
SSD_CAL	-1.5417*Ln({RAW})+16.9476	LSD = Calibrated Long Spaced Density - g/cc		24cm - SSD	
BRD_CAL	-8.6410*Ln({RAW})+99.1852	SSD = Calibrated Short Spaced Density - g/cc		14cm - BRD	
FDS_GAMMA_CAL	0.6948{RAW}	BRD = Calibrated Bed Resolution Density - g/cc		63cm - Caliper	
FDS_CALIPER_CAL	0.0219*{RAW}+8.85	CALI = Calibrated Caliper - in mm			
FDS_CAL_LOCATION	ADELAIDE PIT FACILITY-108mm	RHOB = Bulk Density			
		DPOR = Porosity from Density			

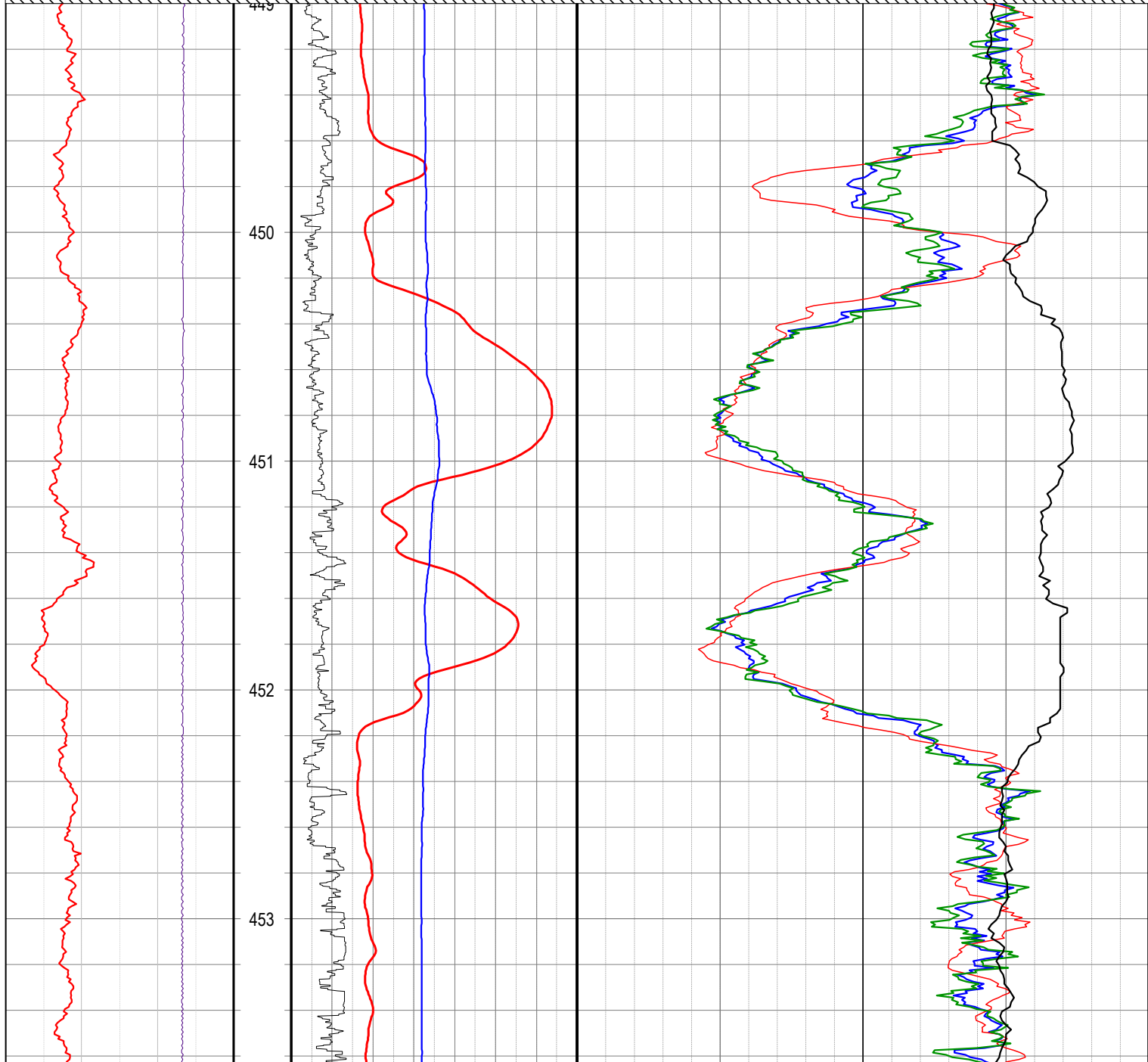
<div>CALI CALIPER</div> <div>50mm86</div>	Depth 1m:25m	<div>PR POINT RESISTIVITY</div> <div>0ohm700</div>	<div>LSD Long Spaced Density</div> <div>1G/CC3</div>
		<div>SP SPONTANEOUS POTENTIAL</div> <div>-400mV0</div>	<div>SSD Short Spaced Density</div> <div>1G/CC3</div>
		<div>REFLECTIVITY ROCK HARDNESS FROM ATV</div> <div>01251</div>	<div>RHOB Bulk Density</div> <div>1G/CC3</div>
<div>P WAVE SLOWNESS FROM FWS VELOCITY ANALYSIS</div> <div>150us/m500</div>			

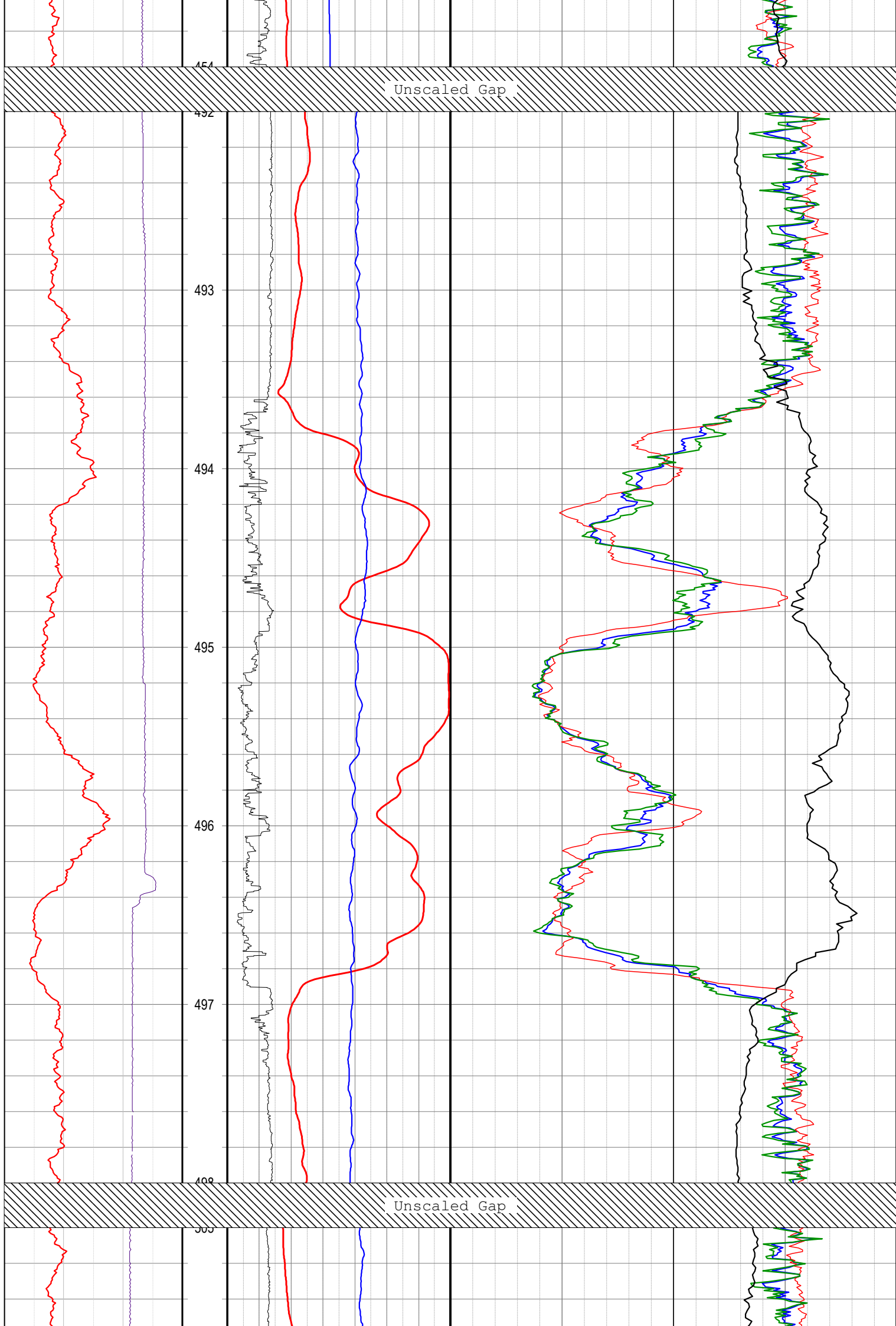


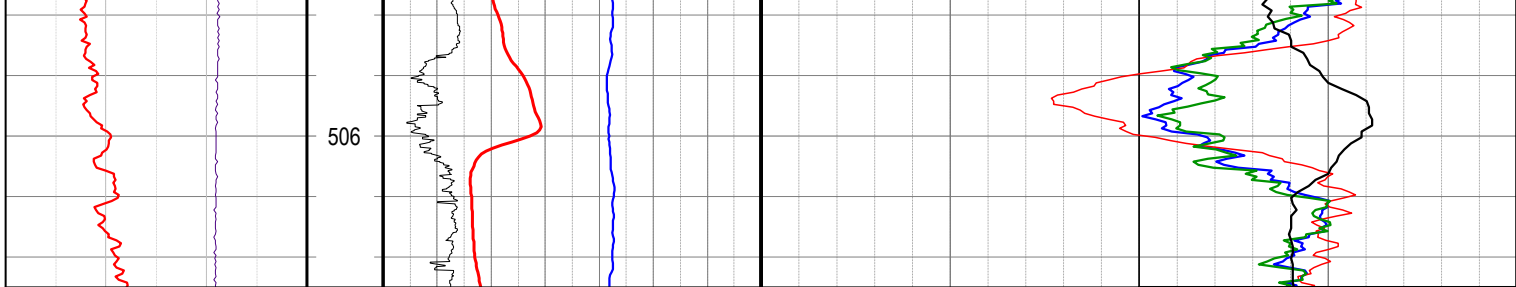




Unscaled Gap







P WAVE SLOWNESS		
FROM FWS VELOCITY ANALYSIS		
150	us/m	500

GRDEN		
Natural Gamma		
0	API	300
CALI		
CALIPER		
50	mm	86

REFLECTIVITY		
ROCK HARDNESS FROM ATV		
0		1251
SP		
SPONTANEOUS POTENTIAL		
-400	mV	0
PR		
POINT RESISTIVITY		
0	ohm	700

RHOB		
Bulk Density		
1	G/CC	3
SSD		
Short Spaced Density		
1	G/CC	3
LSD		
Long Spaced Density		
1	G/CC	3

Depth
1m:25m