



ENDEAVOUR GEOPHYSICS

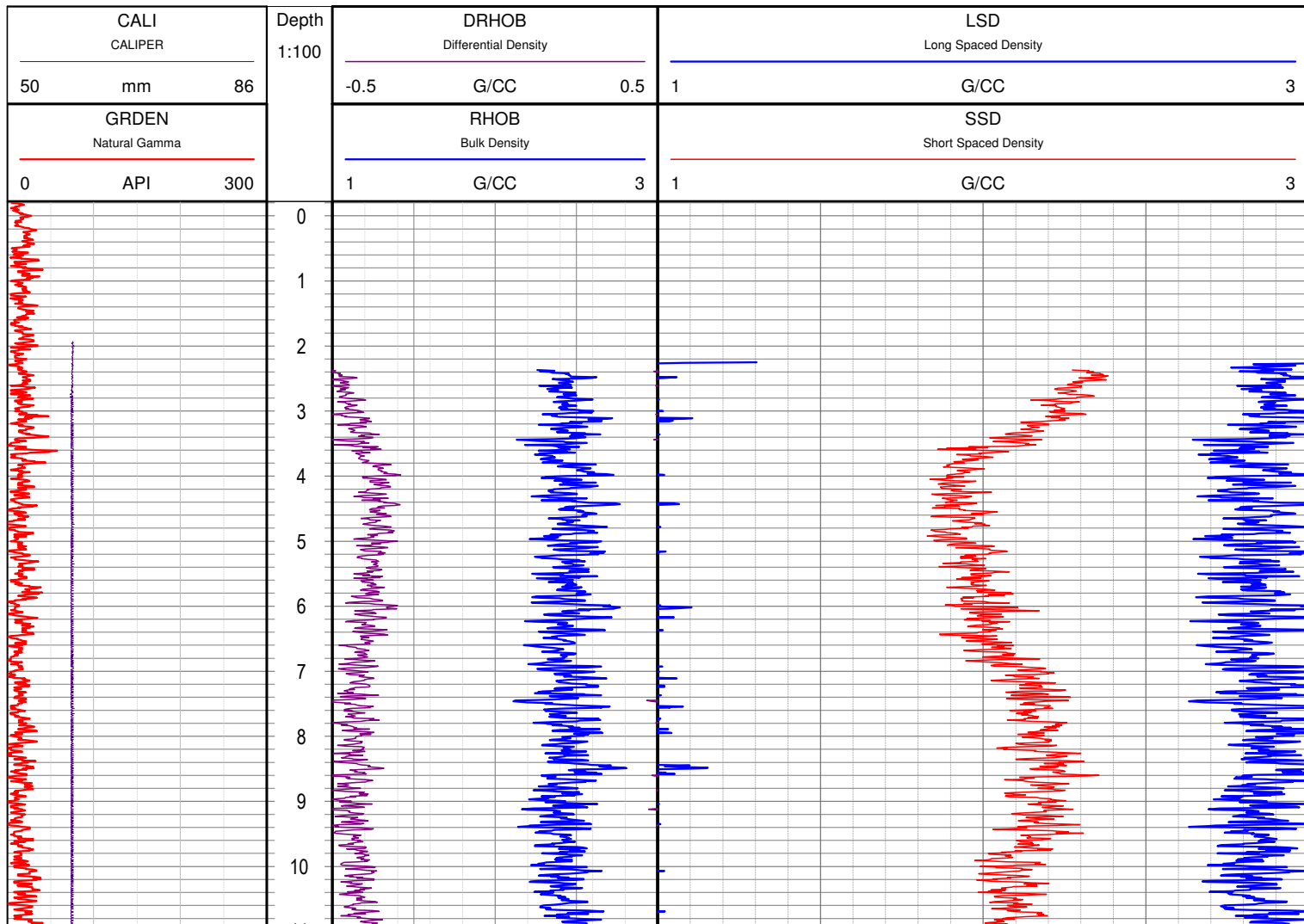
# HARD ROCK COAL

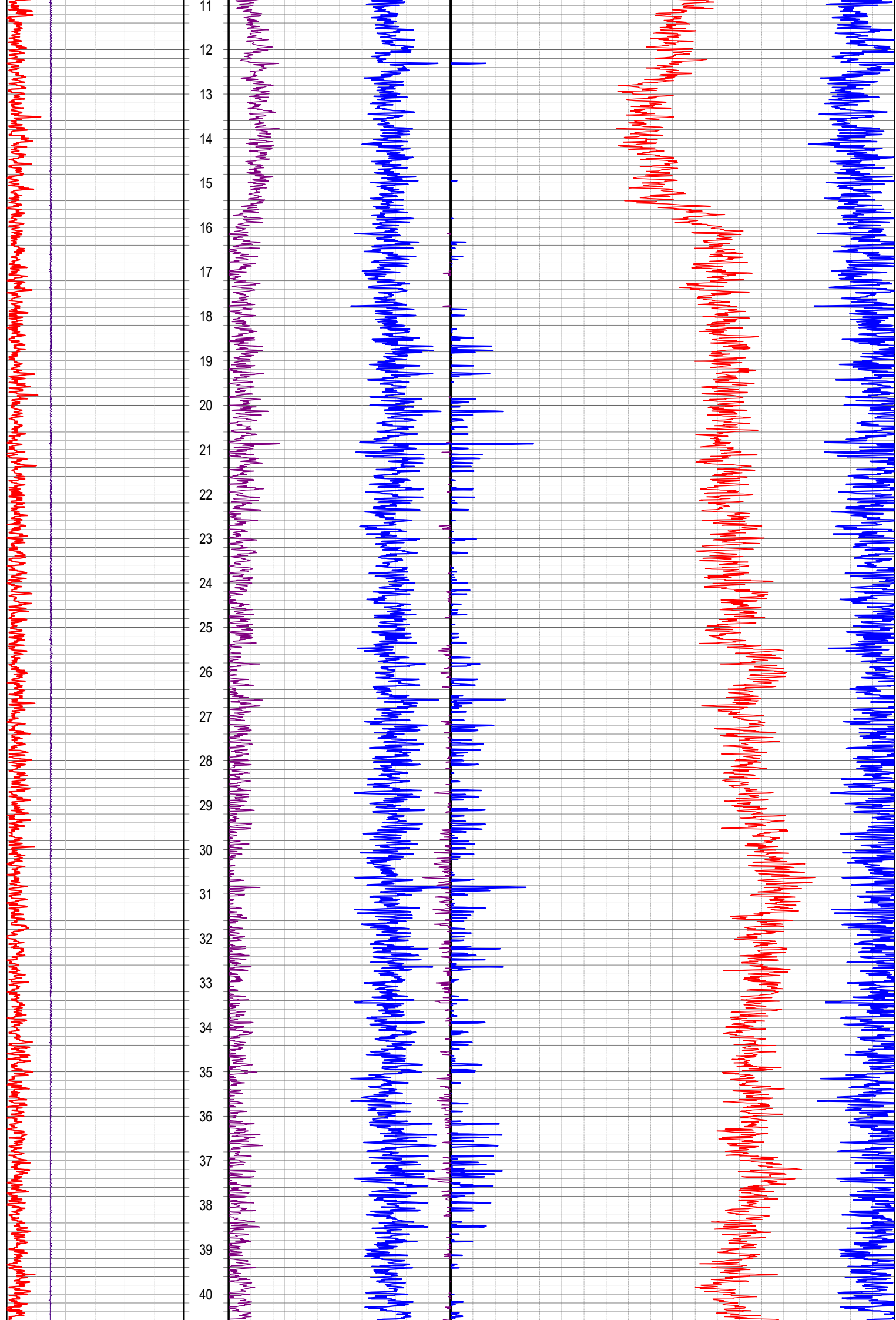
## VR012

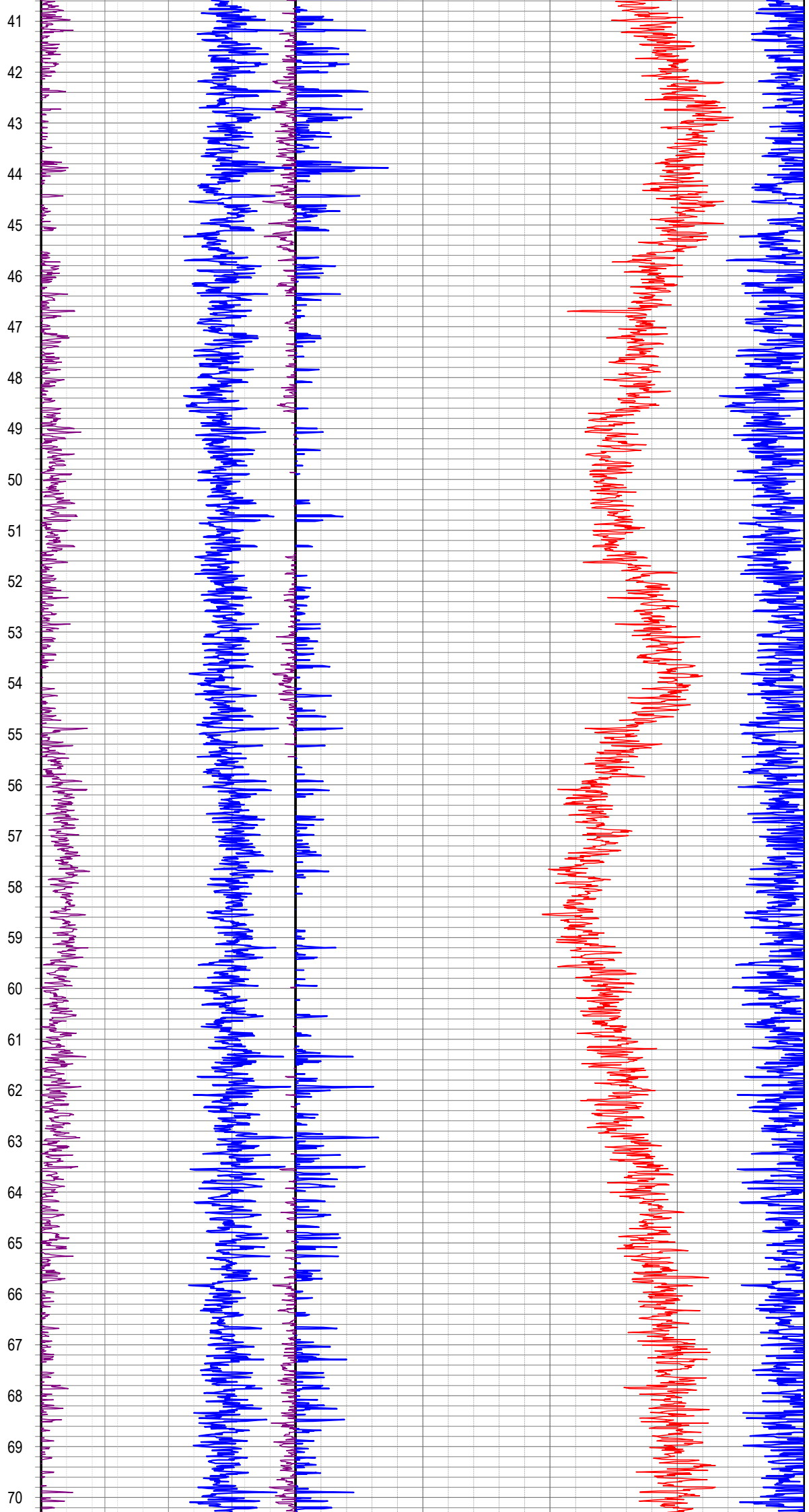
FORMATION DENSITY (THROUGH RODS)

1:100

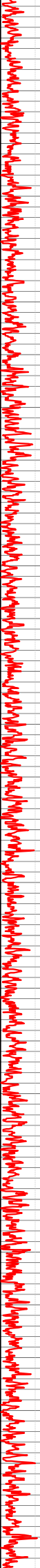
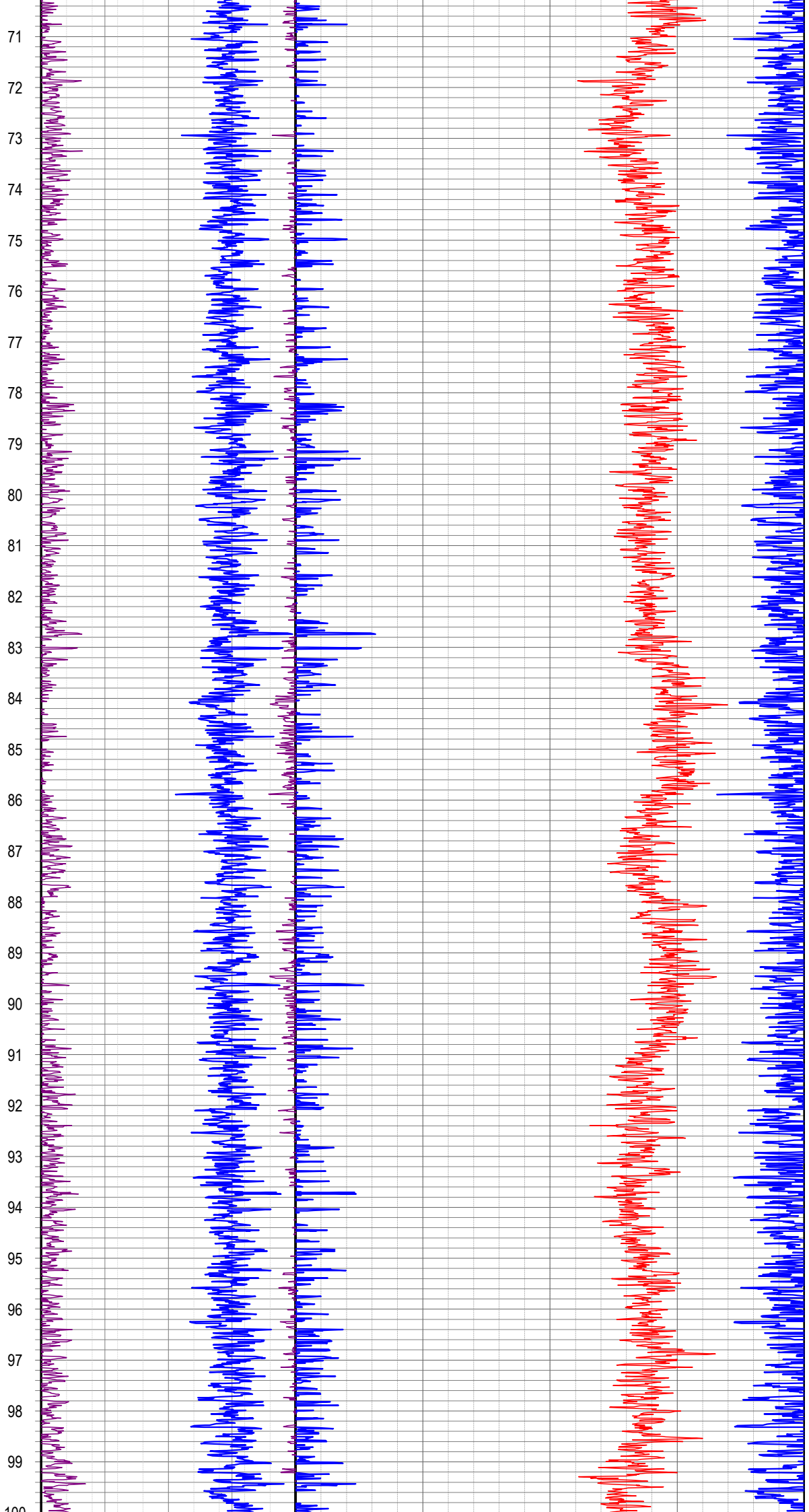
LOCATION		HOLE ATTRIBUTES				LOGGING DETAILS			
LOCATION	FINGAL	DATE	28/09/2015			RECORDED BY	CALEB AMES		
EL		FLUID LEVEL	16.8 m			WITNESSED BY	RON GREGORY		
PROVINCE		FLUID TYPE	WATER			UNIT	EG025		
STATE	TASMANIA	DRILLED DEPTH	510 m			LOGGED DEPTH	500 m		
COUNTRY	AUSTRALIA	DATUM	GROUND LEVEL			INT LOGGED	0-500 m		
LATI		DRILLING COMPANY	SPAULDING			LOGGING RUNS			
LONG		DRILLING RIG							
GEODETIC DATUM	GDA94	BOREHOLE RECORD				FDS(ROD)	717	500	0
COORD	MGA55	TYPE	SIZE	FROM m	TO m	MST(OH)		427	0
EASTING	590067	DIAM	NQ	GL	TD	FWS	S021	509	372
NORTHING	5389095					ATV		427	372
ELEVATION	m					FDS(OH)	717	510	372
SRVC	ENDEAVOUR GEOPHYSICS	CASING RECORD				MST(OH)		510	444
WEB	www.endeavourgeo.com	TYPE	SIZE	FROM m	TO m	ATV		510	444
COMMENTS		RODS	NQ	0	504				
FDS RAN THROUGH RODS. CALIBRATION NOT PERFORMED ON THESE LOGS. HOWEVER RHOB PROVIDES AN APPROX VALUE									



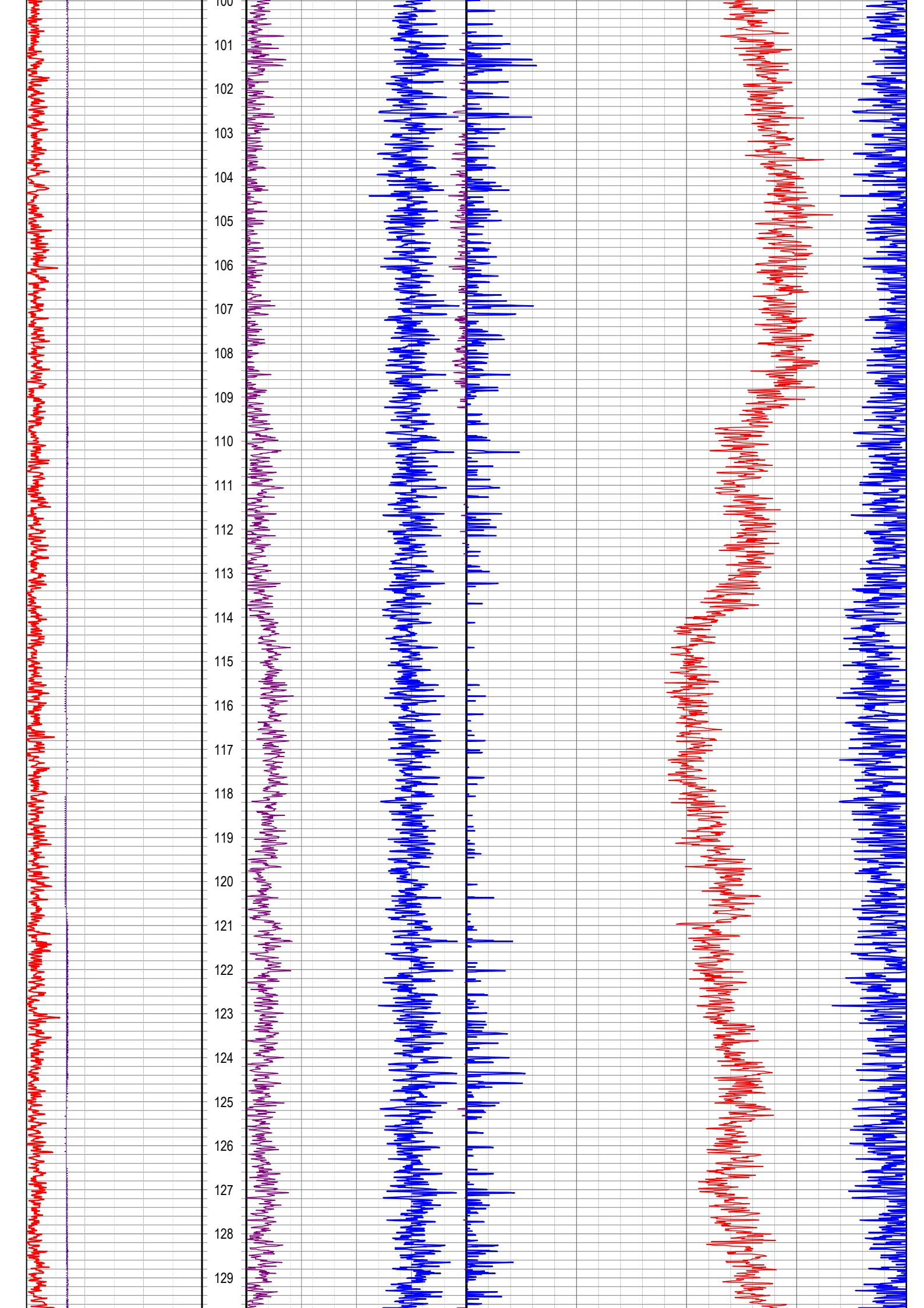


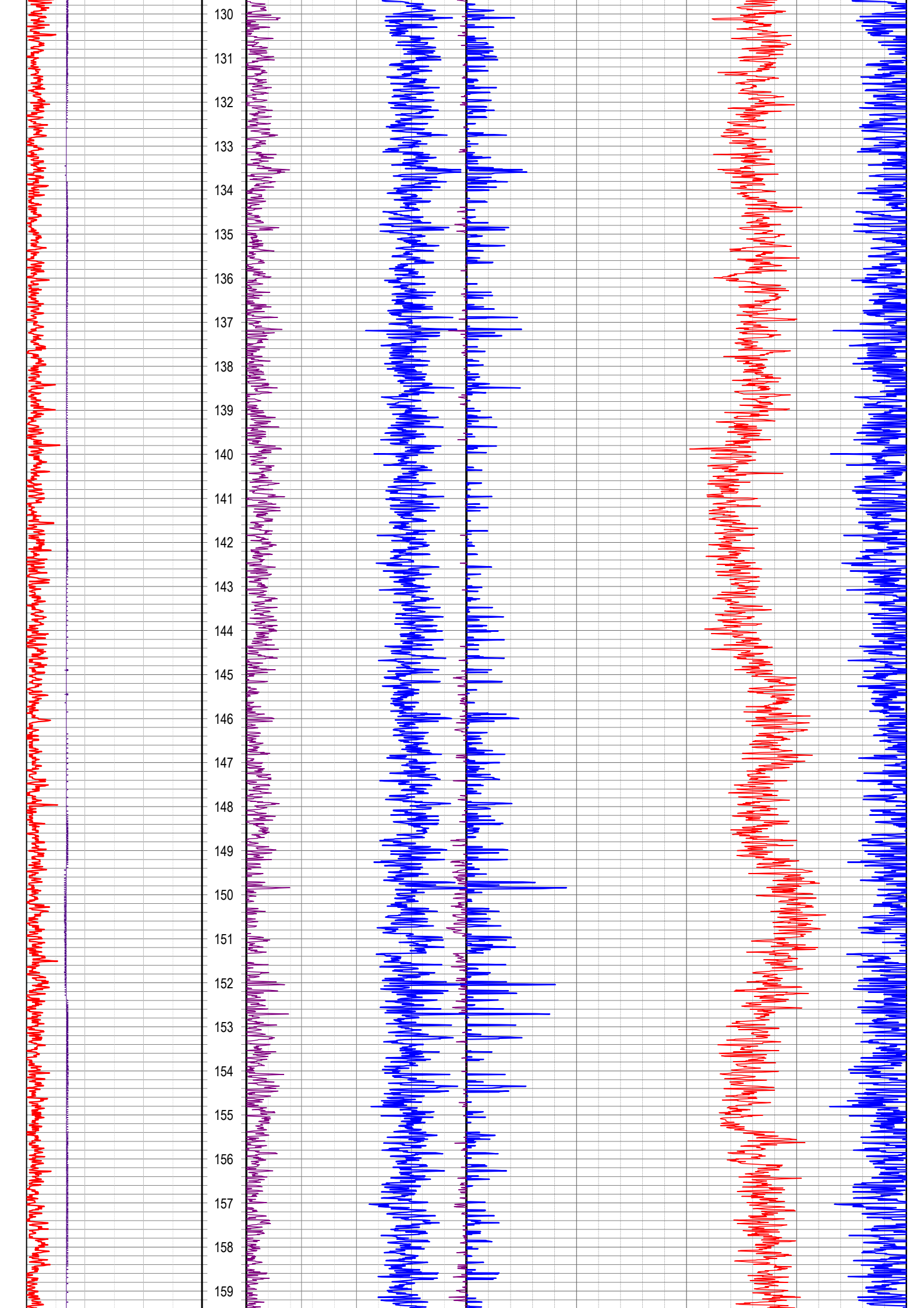


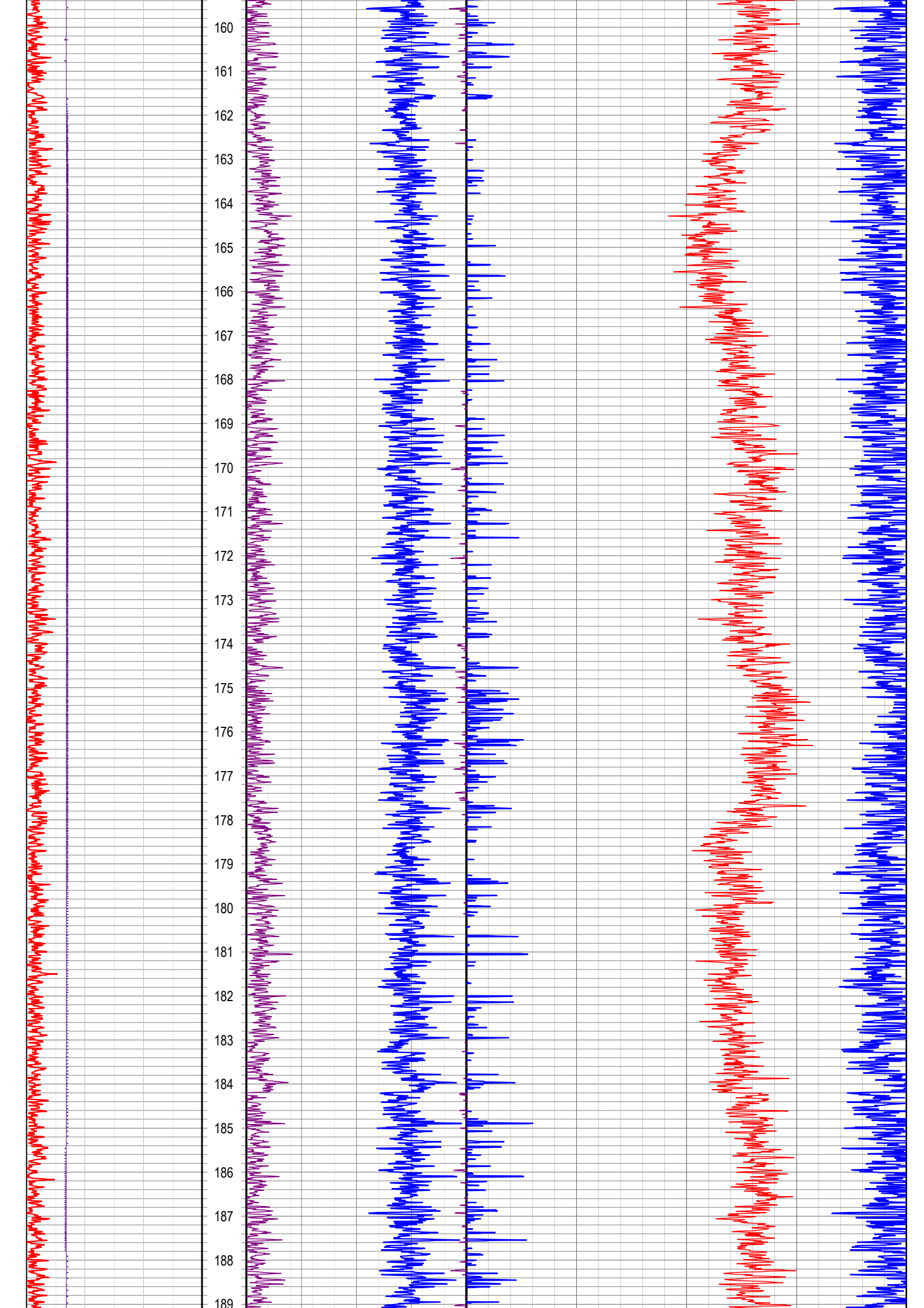
41  
42  
43  
44  
45  
46  
47  
48  
49  
50  
51  
52  
53  
54  
55  
56  
57  
58  
59  
60  
61  
62  
63  
64  
65  
66  
67  
68  
69  
70

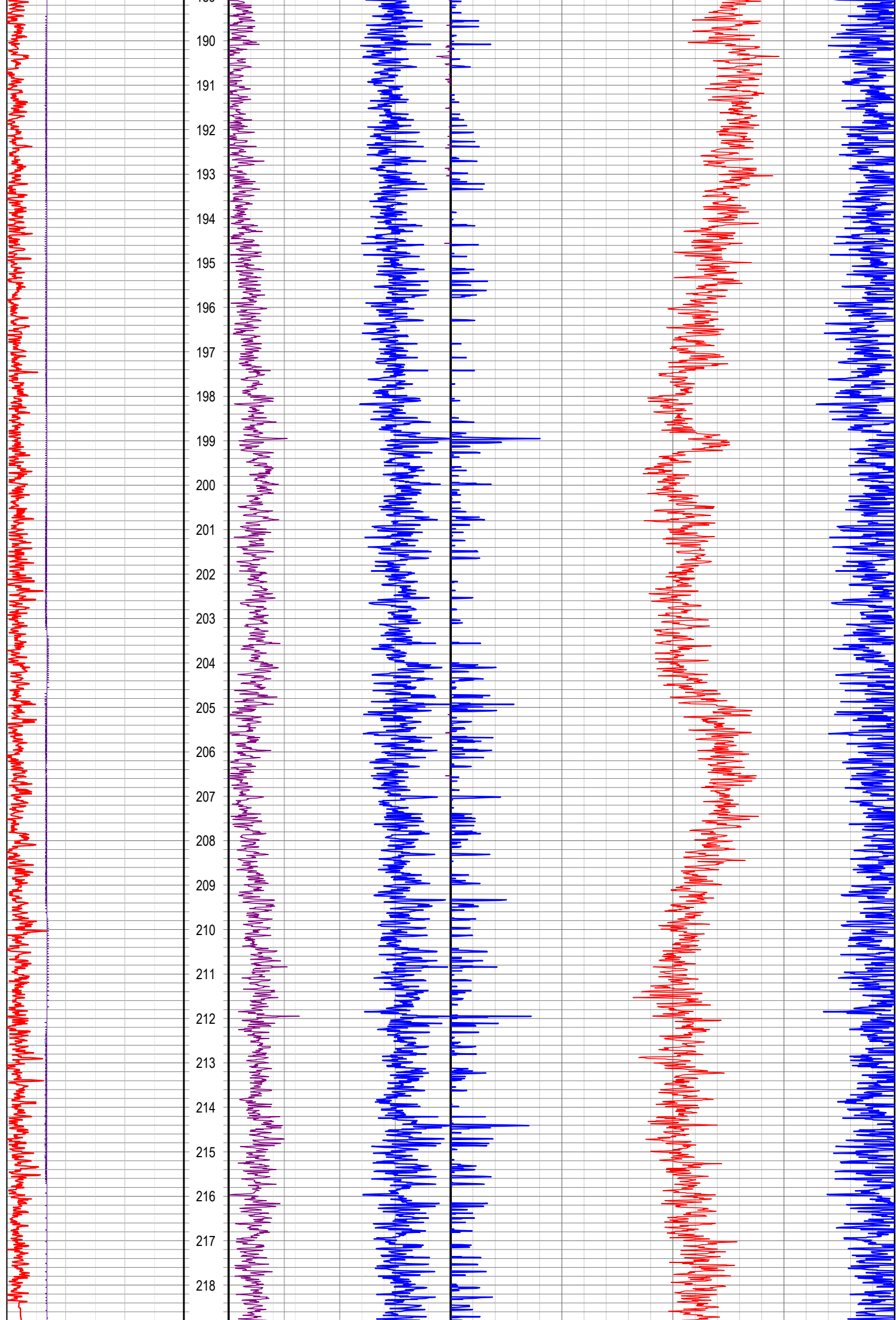




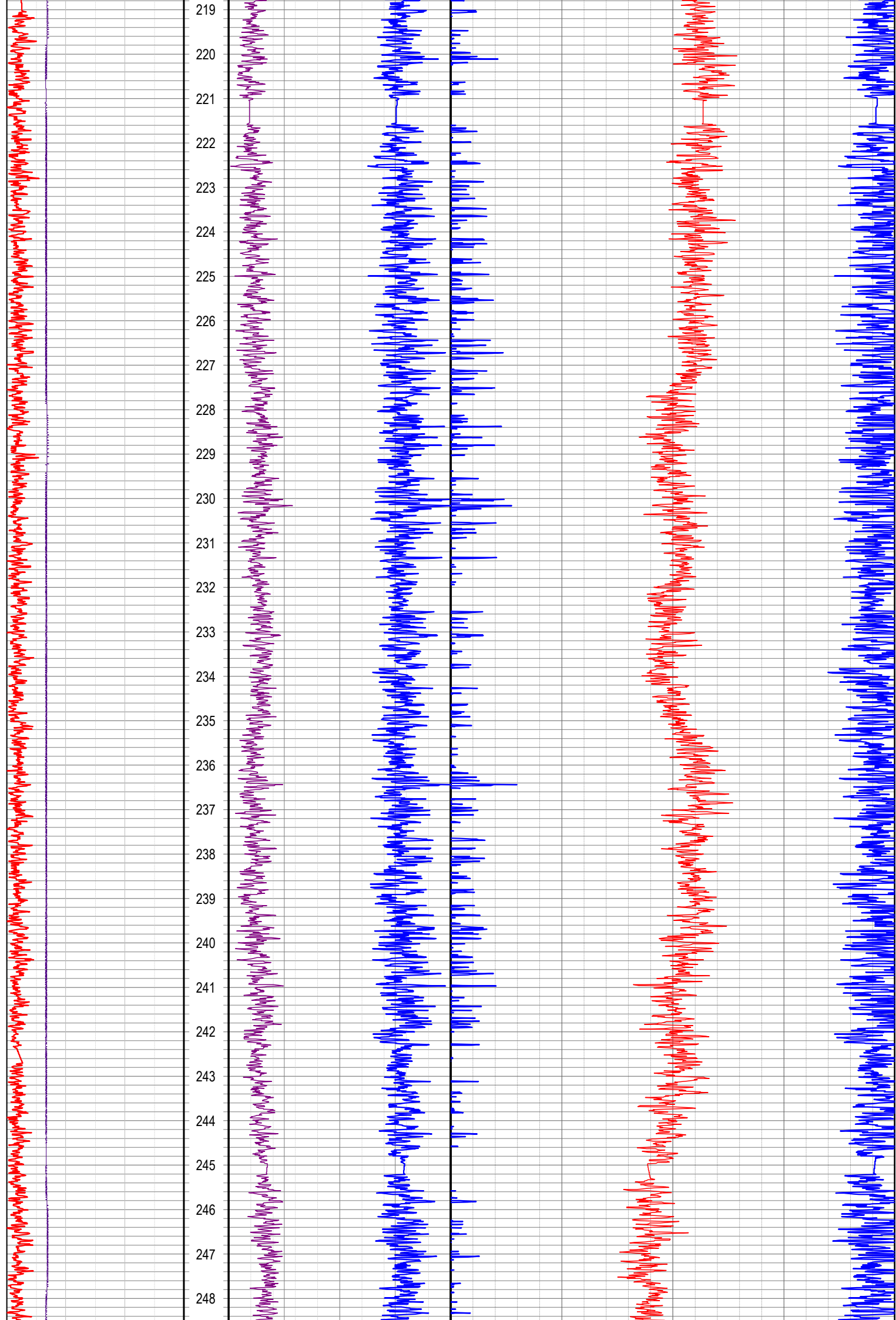


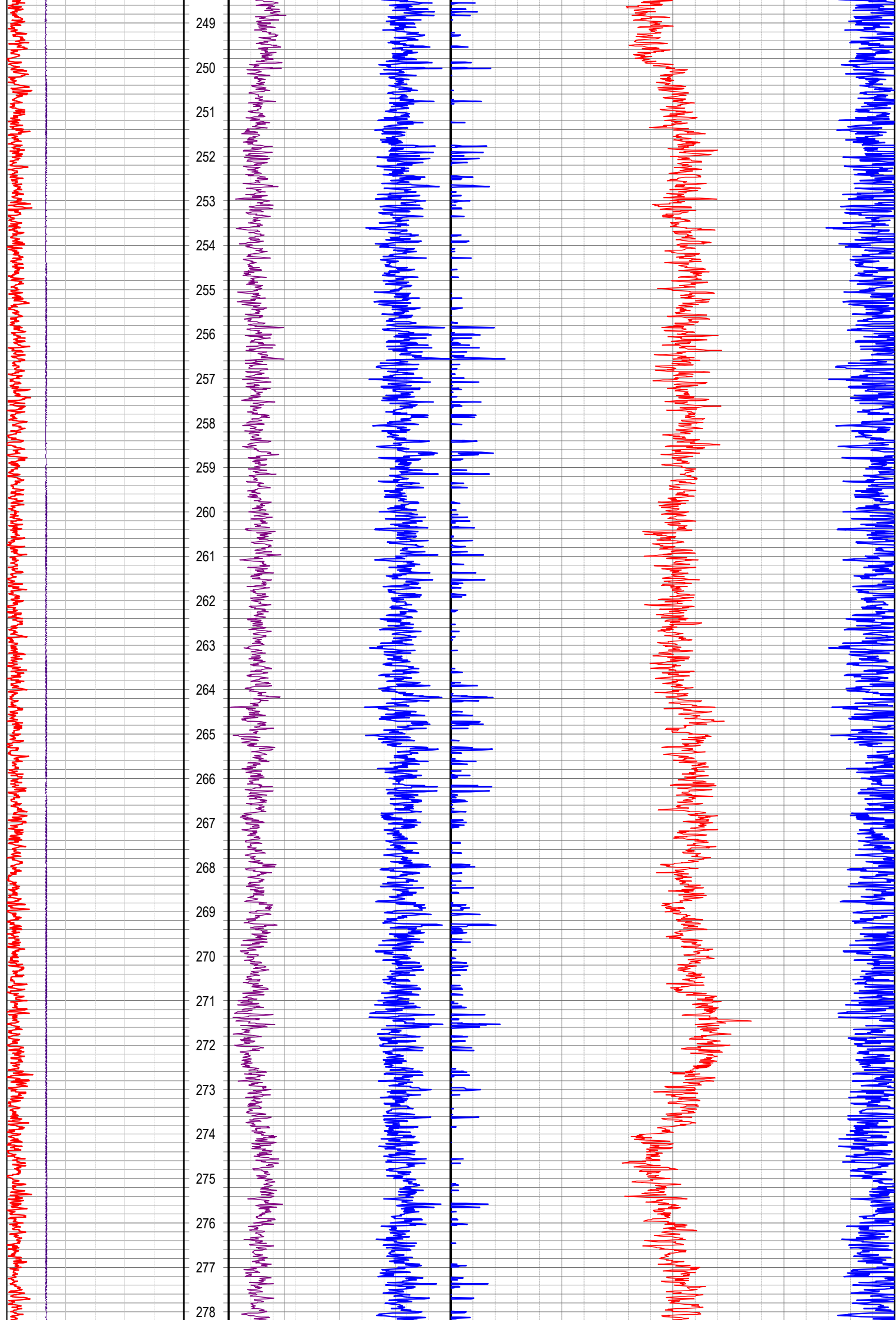


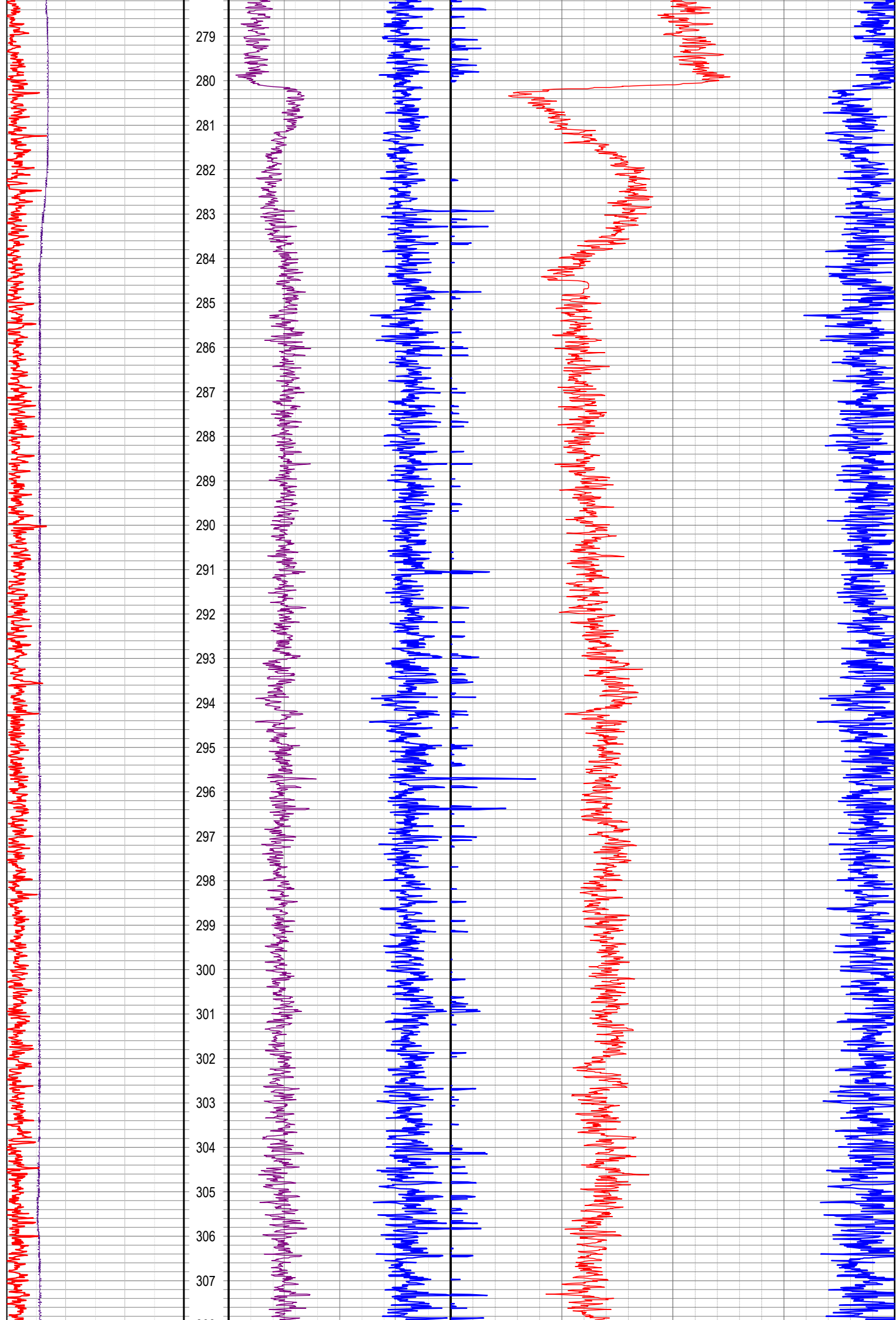












308  
309  
310  
311  
312  
313  
314  
315  
316  
317  
318  
319  
320  
321  
322  
323  
324  
325  
326  
327  
328  
329  
330  
331  
332  
333  
334  
335  
336  
337

308  
309  
310  
311  
312  
313  
314  
315  
316  
317  
318  
319  
320  
321  
322  
323  
324  
325  
326  
327  
328  
329  
330  
331  
332  
333  
334  
335  
336  
337

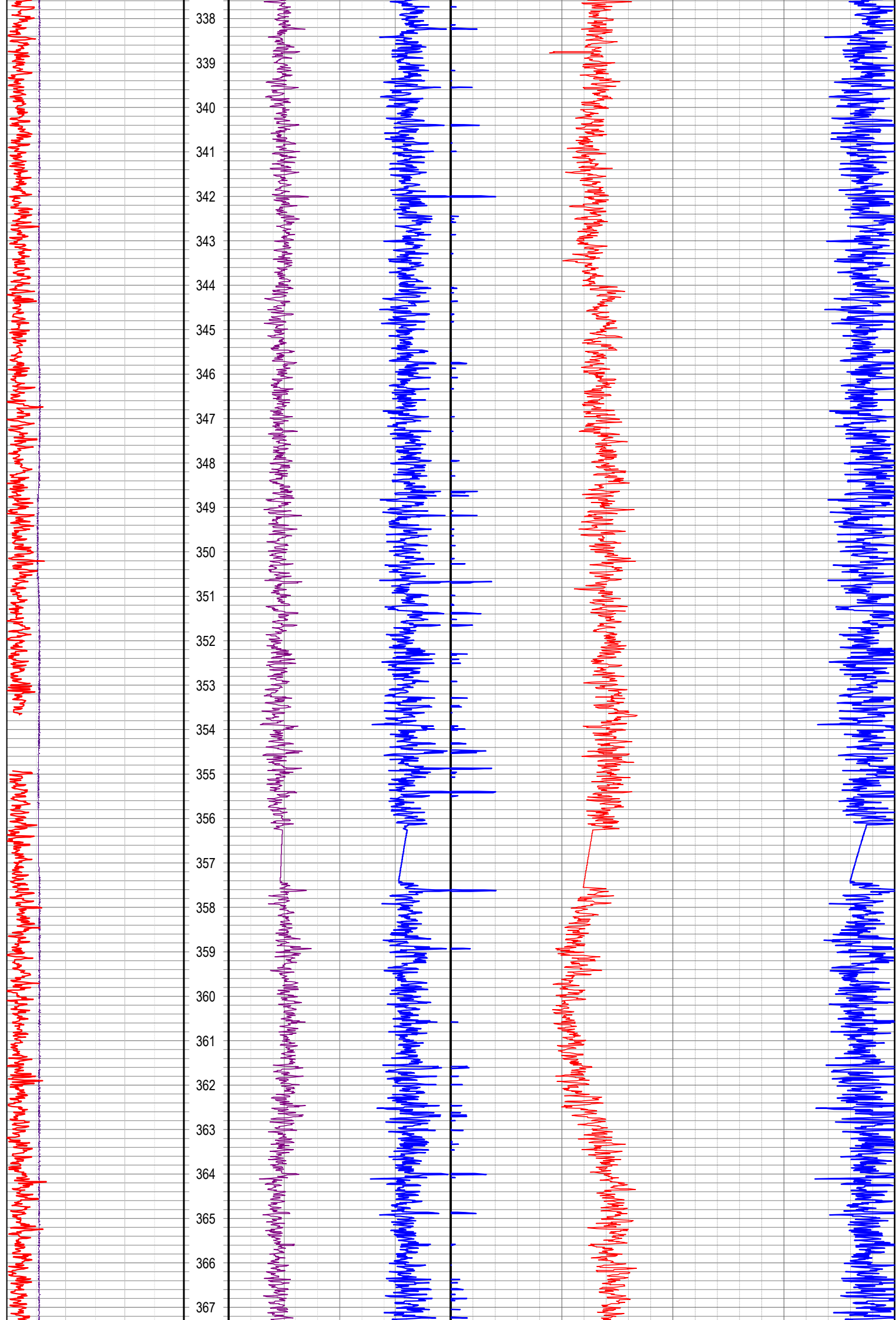
308  
309  
310  
311  
312  
313  
314  
315  
316  
317  
318  
319  
320  
321  
322  
323  
324  
325  
326  
327  
328  
329  
330  
331  
332  
333  
334  
335  
336  
337

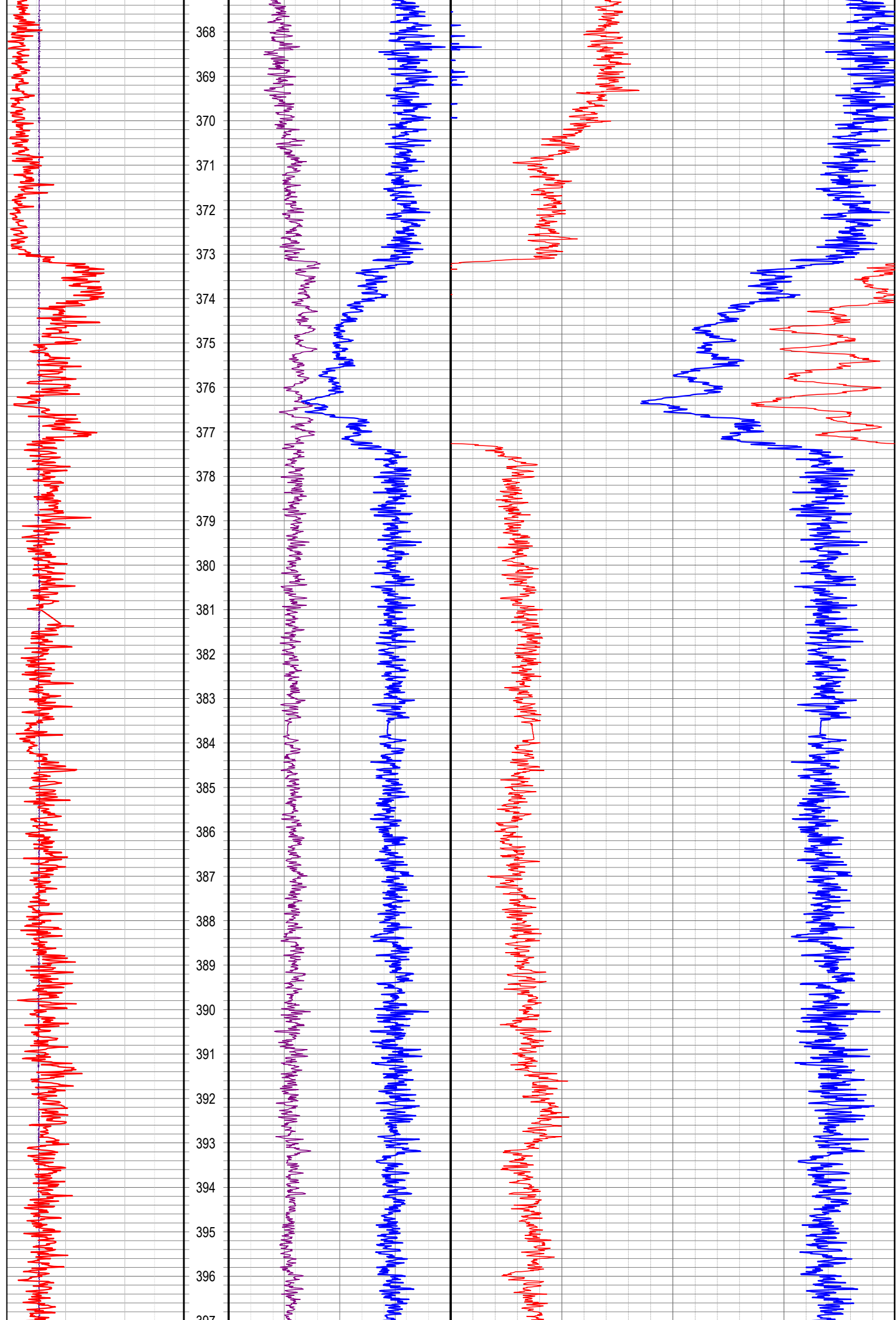
308  
309  
310  
311  
312  
313  
314  
315  
316  
317  
318  
319  
320  
321  
322  
323  
324  
325  
326  
327  
328  
329  
330  
331  
332  
333  
334  
335  
336  
337

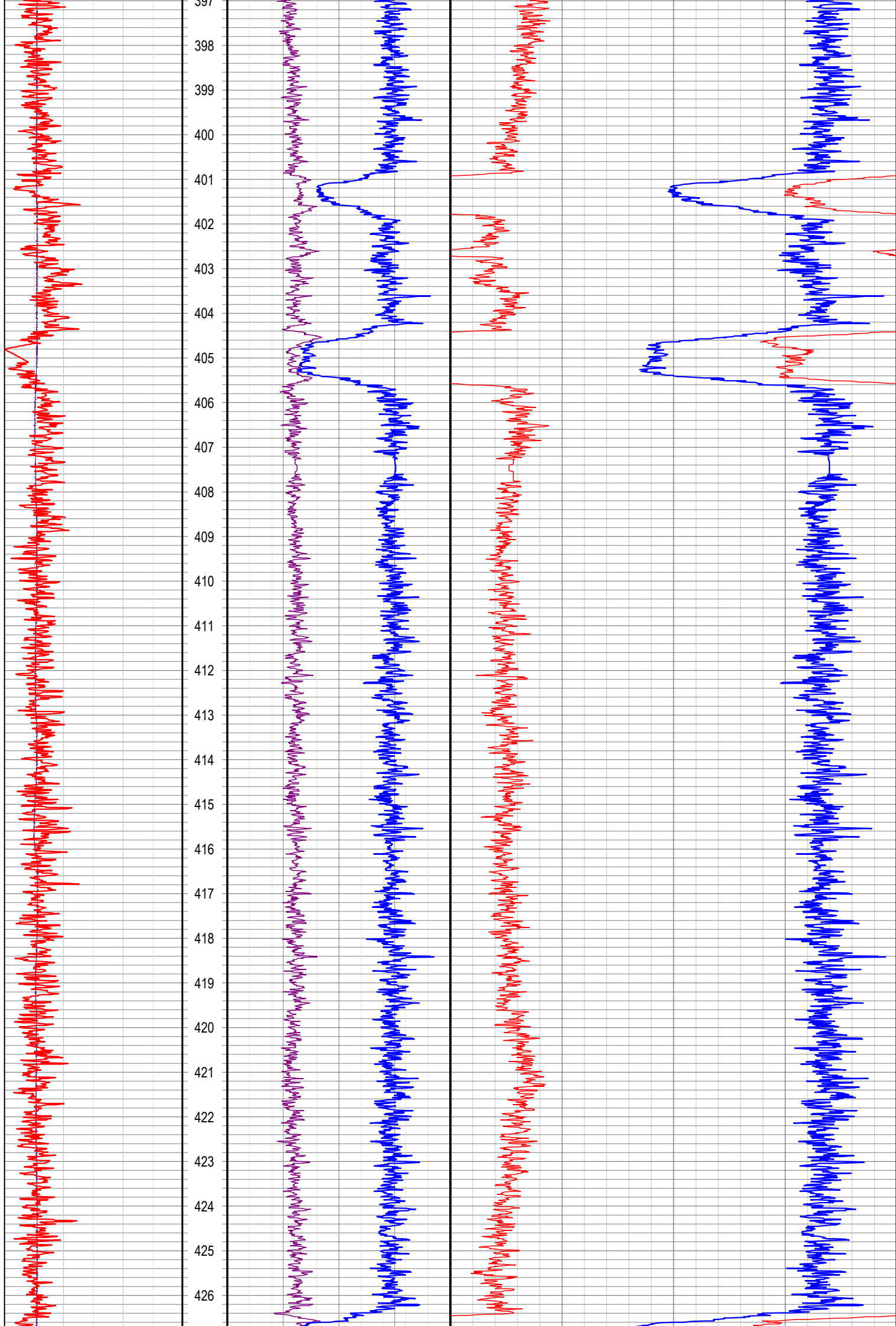
308  
309  
310  
311  
312  
313  
314  
315  
316  
317  
318  
319  
320  
321  
322  
323  
324  
325  
326  
327  
328  
329  
330  
331  
332  
333  
334  
335  
336  
337

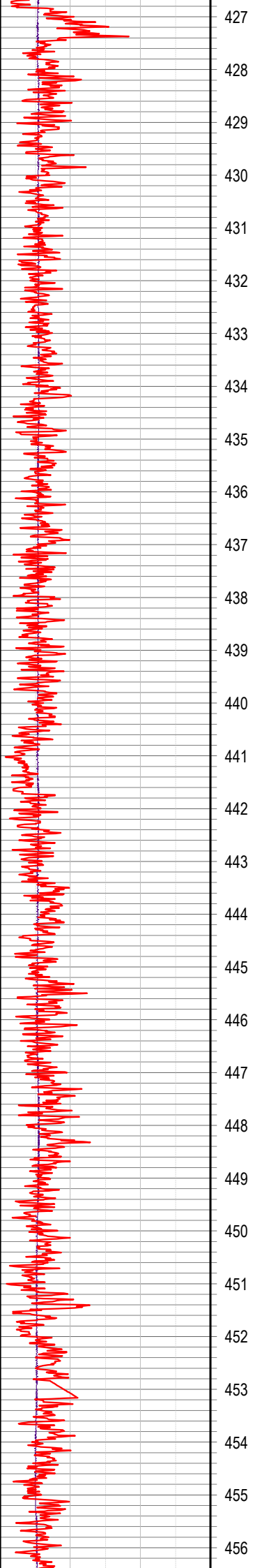
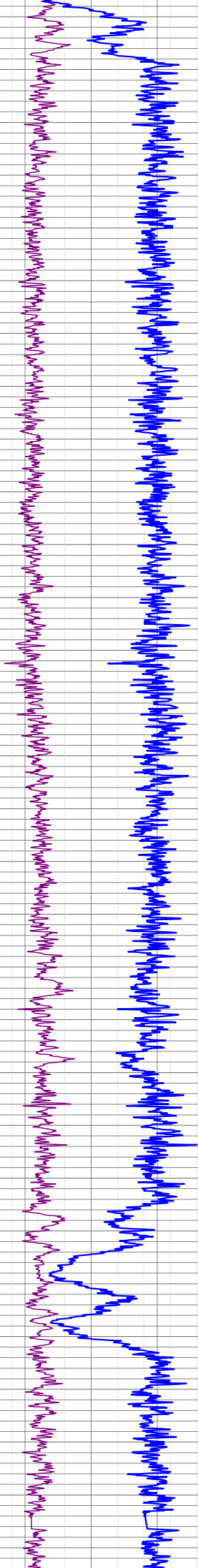
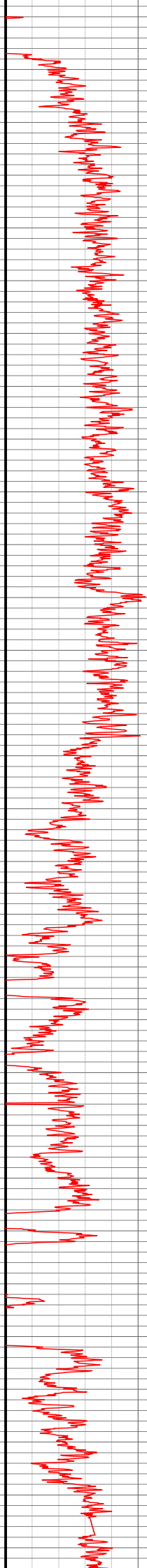
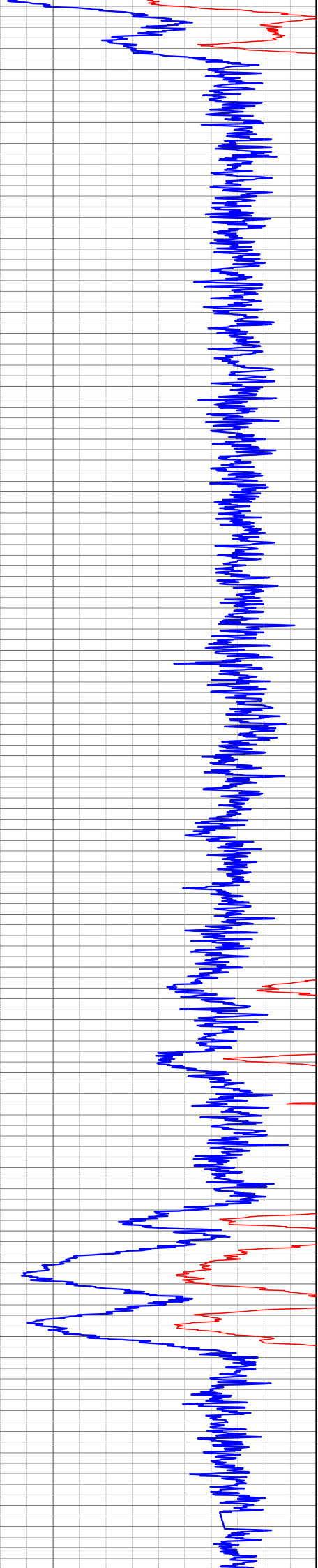
308  
309  
310  
311  
312  
313  
314  
315  
316  
317  
318  
319  
320  
321  
322  
323  
324  
325  
326  
327  
328  
329  
330  
331  
332  
333  
334  
335  
336  
337













Handwritten text in blue ink, appearing to be a list or series of entries, possibly names or dates, written vertically.

Handwritten text in red ink, appearing to be a list or series of entries, possibly names or dates, written vertically.

Handwritten text in blue ink, appearing to be a list or series of entries, possibly names or dates, written vertically.

Handwritten text in red ink, appearing to be a list or series of entries, possibly names or dates, written vertically.

457  
458  
459  
460  
461  
462  
463  
464  
465  
466  
467  
468  
469  
470  
471  
472  
473  
474  
475  
476  
477  
478  
479  
480  
481  
482  
483  
484  
485  
486

