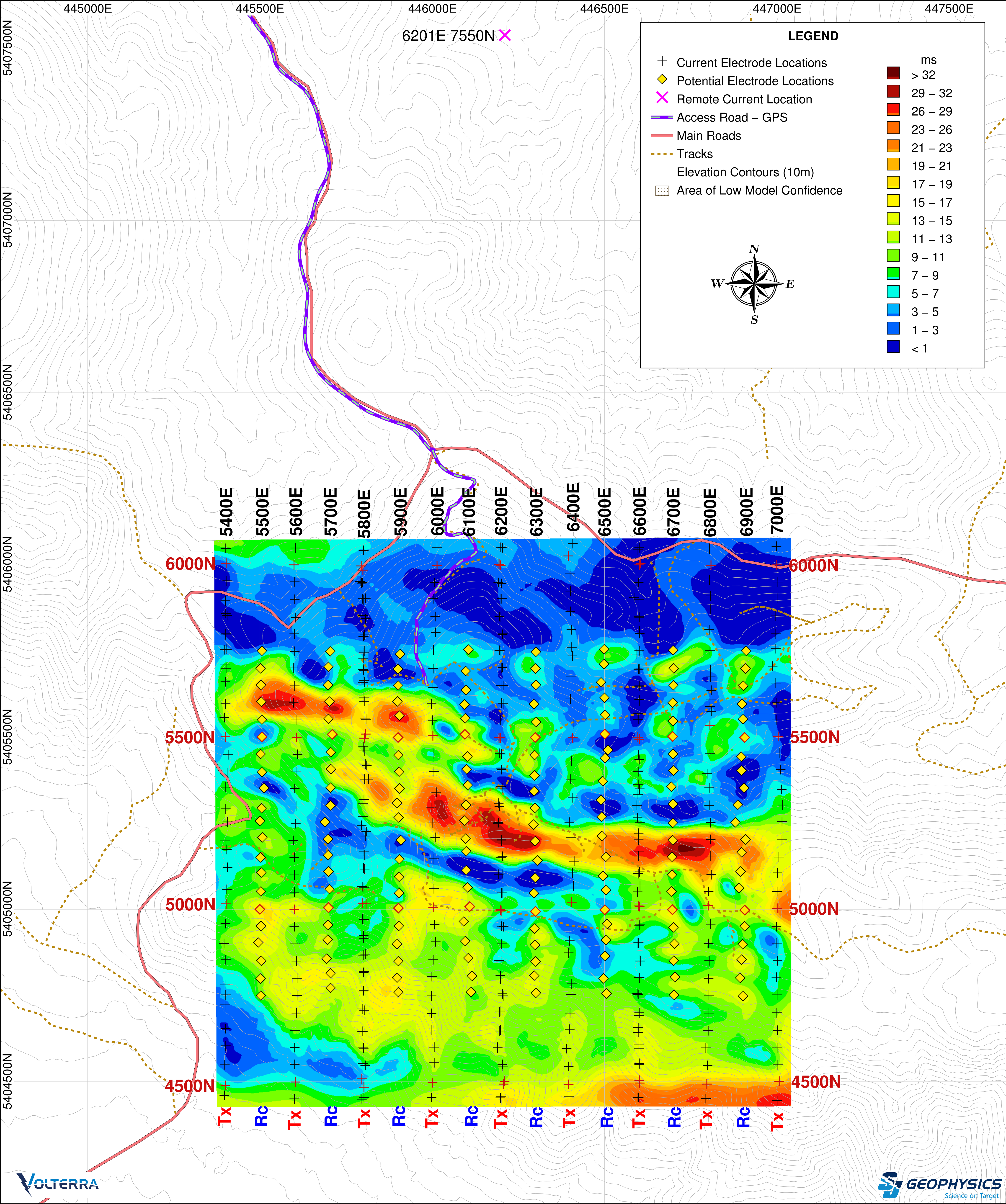


Project Information:  
 Survey by: SJ Geophysics Ltd.  
 Survey Type: Volterra–3DIP  
 Survey Date: May – June, 2018  
 Inversion by: SJ Geophysics Ltd.  
 Inversion Software: UBC–GIF DCIP3D

Instrumentation:  
 Receiver: Volterra Acquisition Units  
 Transmitter: GDD TX II  
 Array Type: Distributed 3DIP  
 Apparent Chargeability Integration : 50–1950 ms

Mapping Information:  
 Datum: GDA94  
 Projection: MGA Z55  
 Inversion Model: ipinv3d\_ UTM\_r2i04.chg  
 Colour Classification: Modified Linear  
 Mapping Date: 27–Jul–2018



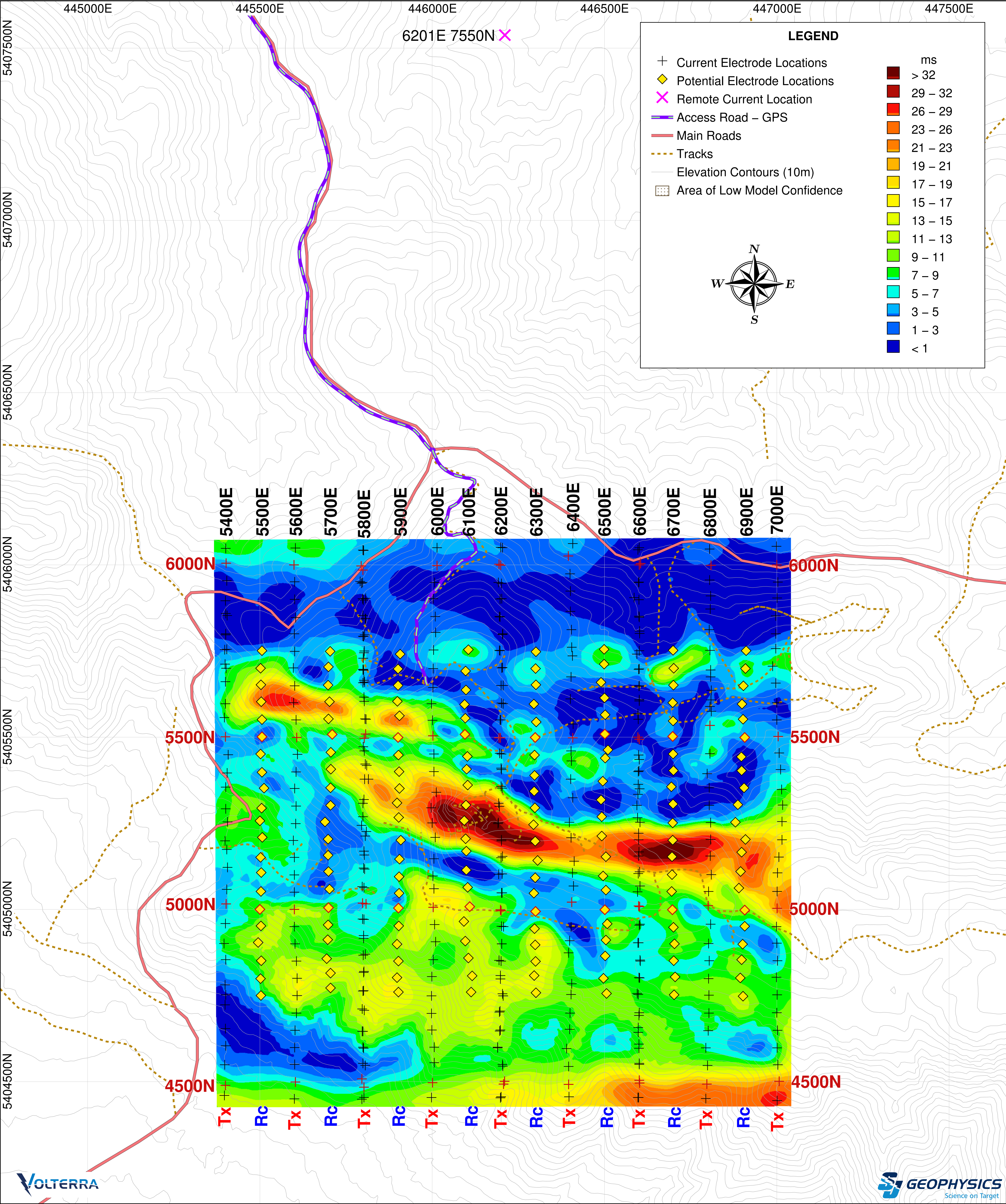


Project Information:  
Survey by: SJ Geophysics Ltd.  
Survey Type: Volterra–3DIP  
Survey Date: May – June, 2018  
Inversion by: SJ Geophysics Ltd.  
Inversion Software: UBC–GIF DCIP3D

Instrumentation:  
Receiver: Volterra Acquisition Units  
Transmitter: GDD TX II  
Array Type: Distributed 3DIP  
Apparent Chargeability Integration : 50–1950 ms

Mapping Information:  
Datum: GDA94  
Projection: MGA Z55  
Inversion Model: ipinv3d\_ UTM\_r2i04.chg  
Colour Classification: Modified Linear  
Mapping Date: 27–Jul–2018

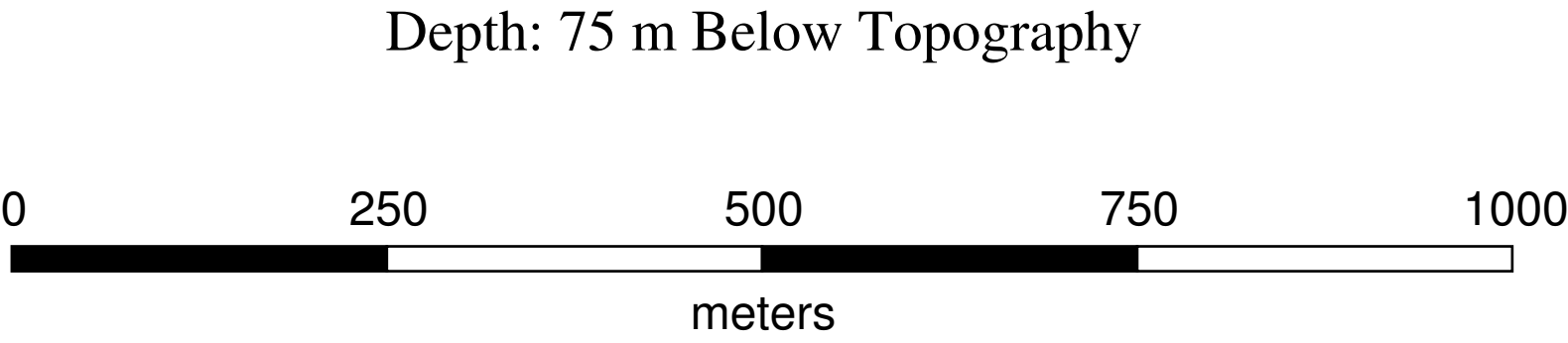




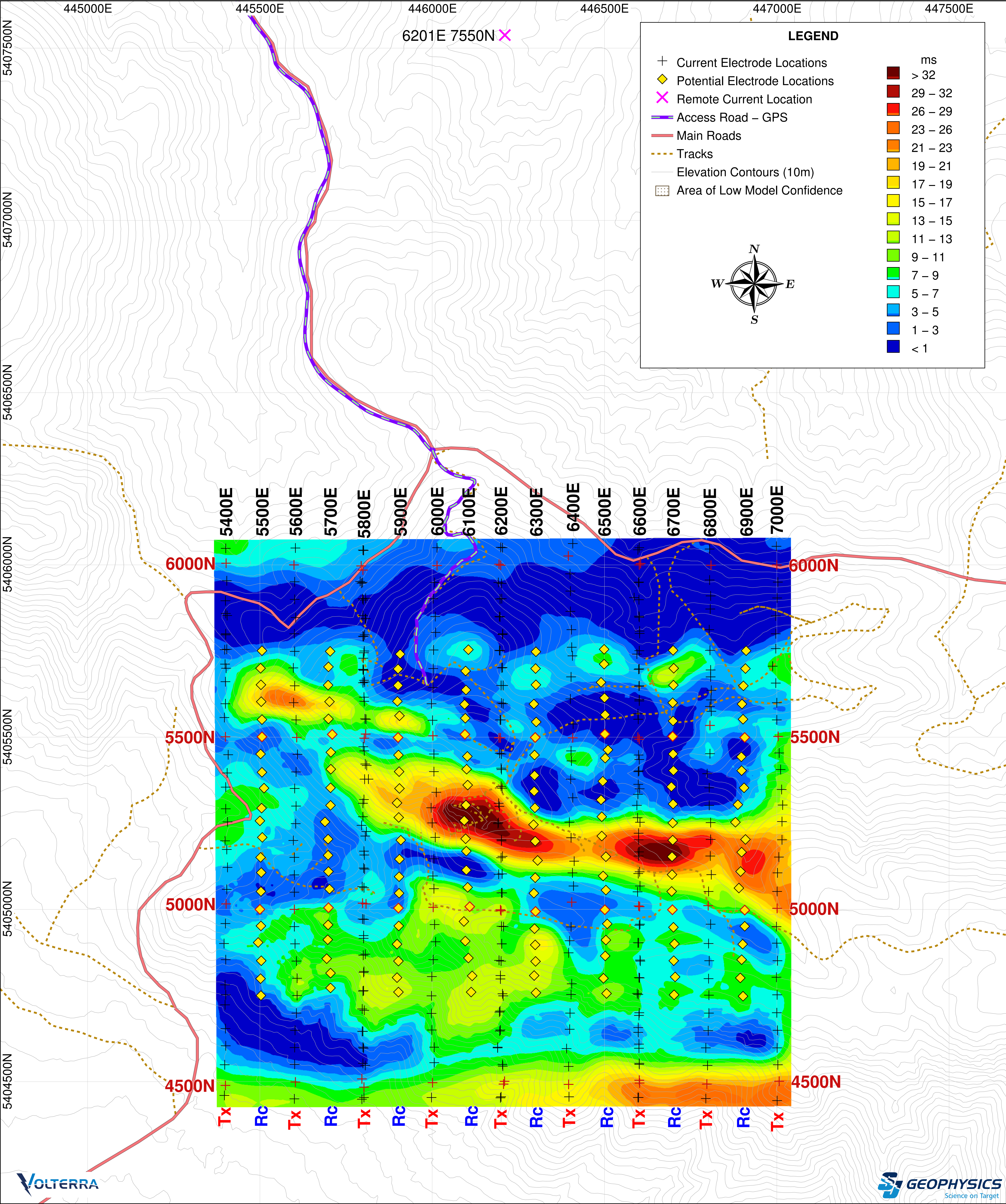
Project Information:  
Survey by: SJ Geophysics Ltd.  
Survey Type: Volterra-3DIP  
Survey Date: May – June, 2018  
Inversion by: SJ Geophysics Ltd.  
Inversion Software: UBC-GIF DCIP3D

Instrumentation:  
Receiver: Volterra Acquisition Units  
Transmitter: GDD TX II  
Array Type: Distributed 3DIP  
Apparent Chargeability Integration : 50–1950 ms

Mapping Information:  
Datum: GDA94  
Projection: MGA Z55  
Inversion Model: ipinv3d\_ UTM\_r2i04.chg  
Colour Classification: Modified Linear  
Mapping Date: 27-Jul-2018





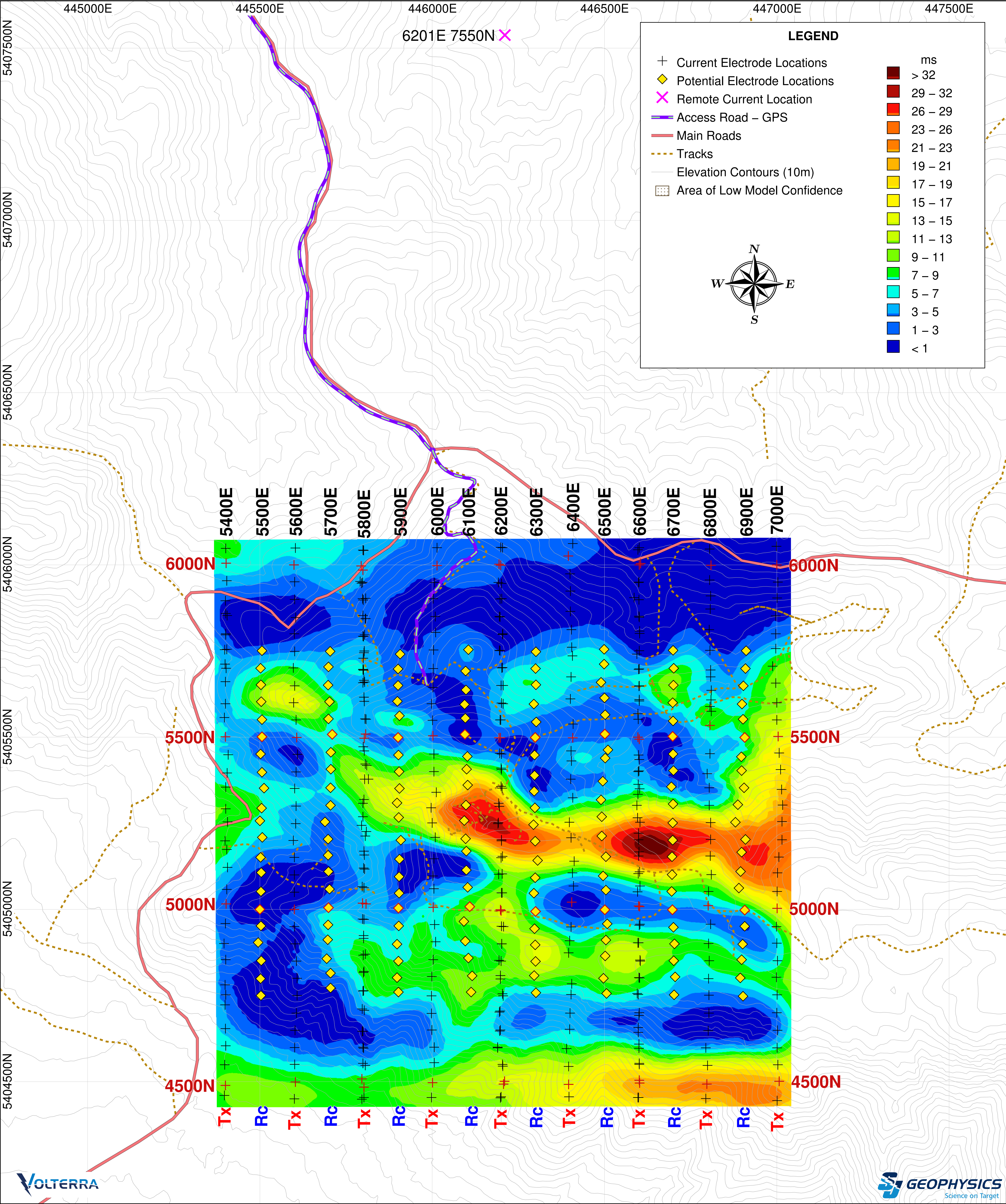


Project Information:  
 Survey by: SJ Geophysics Ltd.  
 Survey Type: Volterra–3DIP  
 Survey Date: May – June, 2018  
 Inversion by: SJ Geophysics Ltd.  
 Inversion Software: UBC–GIF DCIP3D

Instrumentation:  
 Receiver: Volterra Acquisition Units  
 Transmitter: GDD TX II  
 Array Type: Distributed 3DIP  
 Apparent Chargeability Integration : 50–1950 ms

Mapping Information:  
 Datum: GDA94  
 Projection: MGA Z55  
 Inversion Model: ipinv3d\_ UTM\_r2i04.chg  
 Colour Classification: Modified Linear  
 Mapping Date: 27–Jul–2018



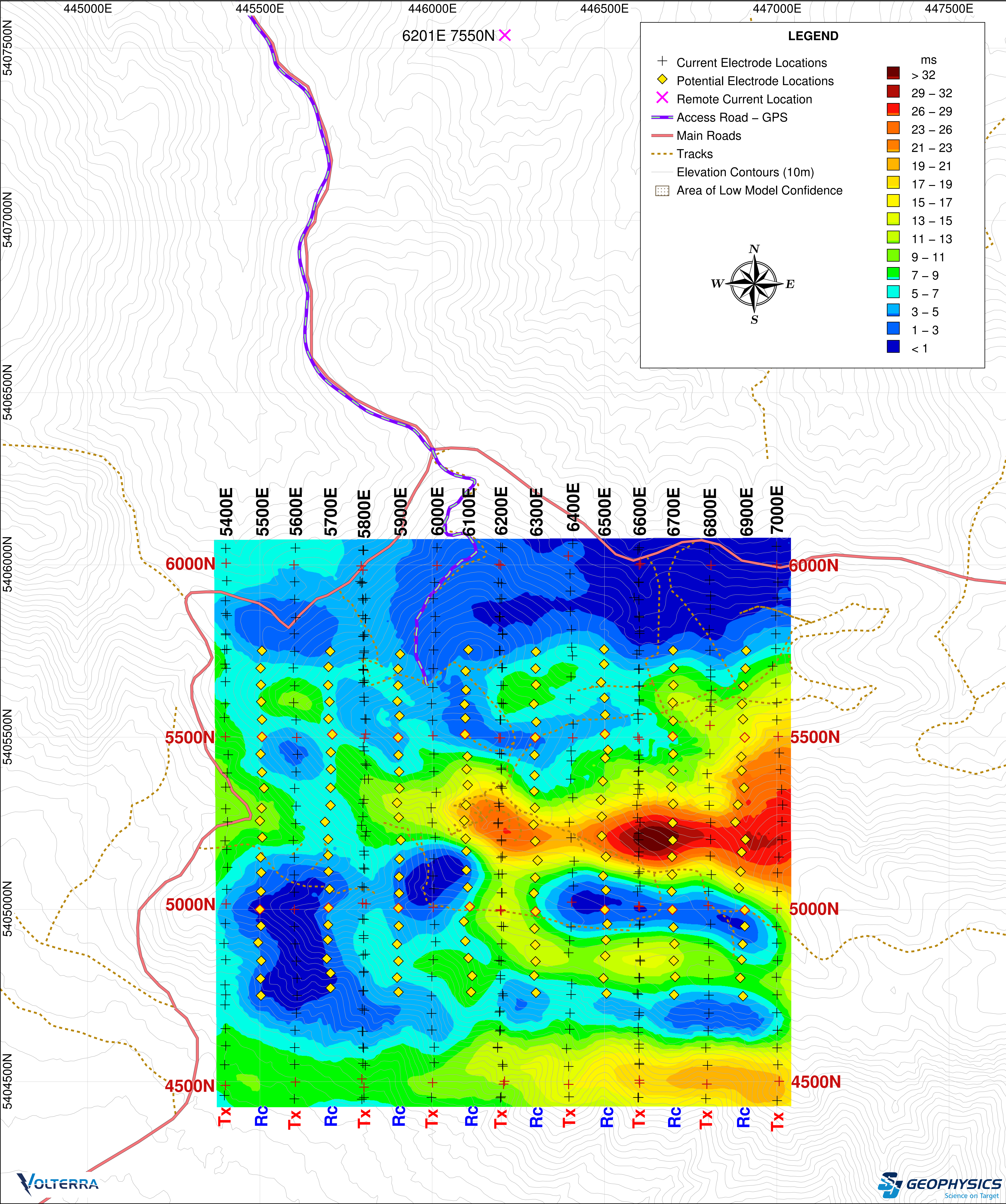


Project Information:  
 Survey by: SJ Geophysics Ltd.  
 Survey Type: Volterra–3DIP  
 Survey Date: May – June, 2018  
 Inversion by: SJ Geophysics Ltd.  
 Inversion Software: UBC–GIF DCIP3D

Instrumentation:  
 Receiver: Volterra Acquisition Units  
 Transmitter: GDD TX II  
 Array Type: Distributed 3DIP  
 Apparent Chargeability Integration : 50–1950 ms

Mapping Information:  
 Datum: GDA94  
 Projection: MGA Z55  
 Inversion Model: ipinv3d\_ UTM\_r2i04.chg  
 Colour Classification: Modified Linear  
 Mapping Date: 27–Jul–2018





Project Information:  
Survey by: SJ Geophysics Ltd.  
Survey Type: Volterra-3DIP  
Survey Date: May – June, 2018  
Inversion by: SJ Geophysics Ltd.  
Inversion Software: UBC-GIF DCIP3D

Instrumentation:  
Receiver: Volterra Acquisition Units  
Transmitter: GDD TX II  
Array Type: Distributed 3DIP  
Apparent Chargeability Integration : 50–1950 ms

Mapping Information:  
Datum: GDA94  
Projection: MGA Z55  
Inversion Model: ipinv3d\_UTM\_r2i04.chg  
Colour Classification: Modified Linear  
Mapping Date: 27-Jul-2018

## Volterra 3DIP

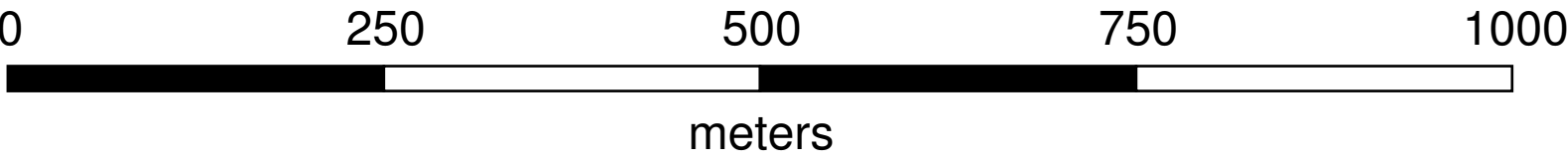
Greatland Pty Ltd.

### Interpreted Chargeability Inversion Model (ms)

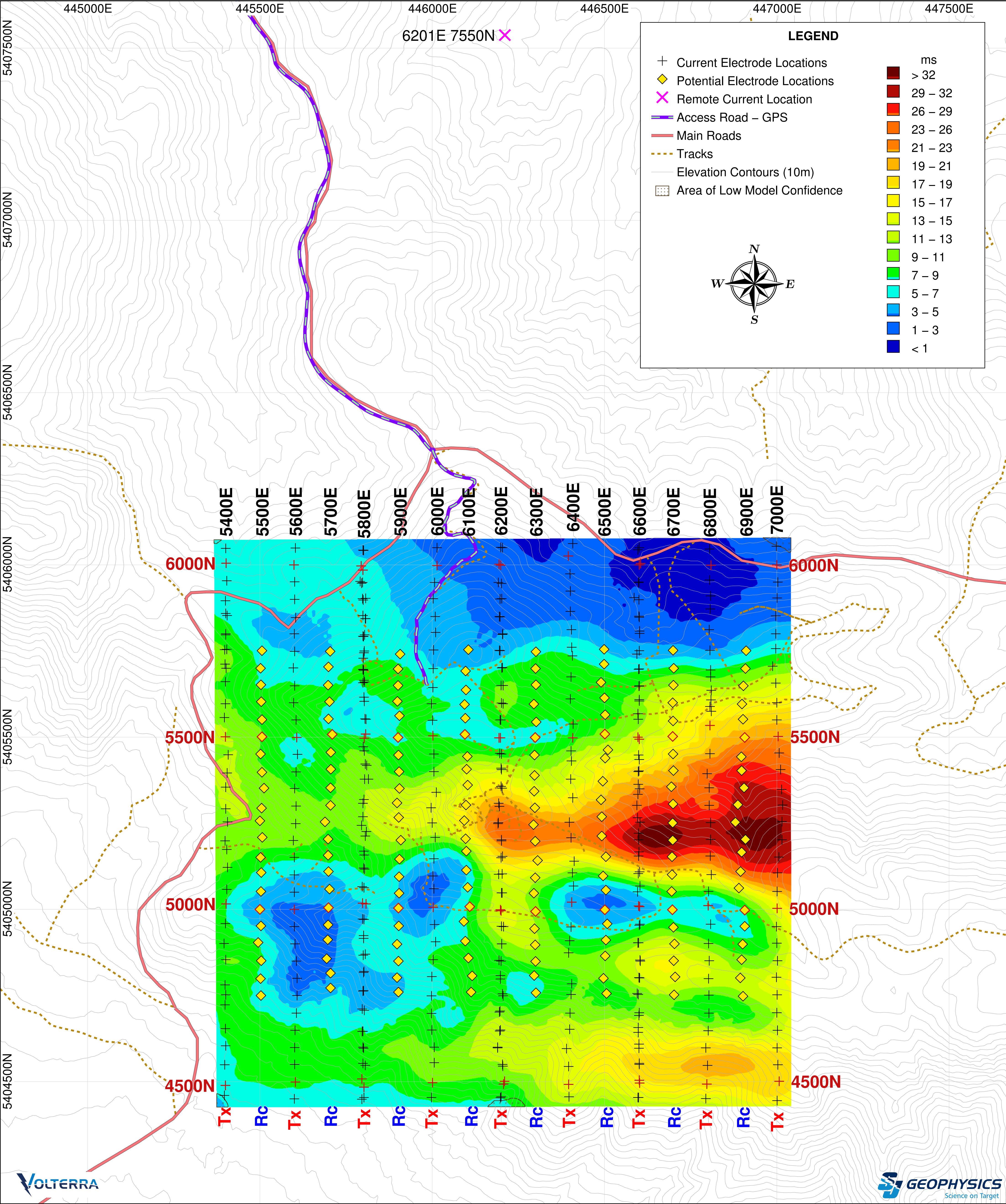
Firetower Property

Depth: 200 m Below Topography

Sheffield, Tasmania, Australia





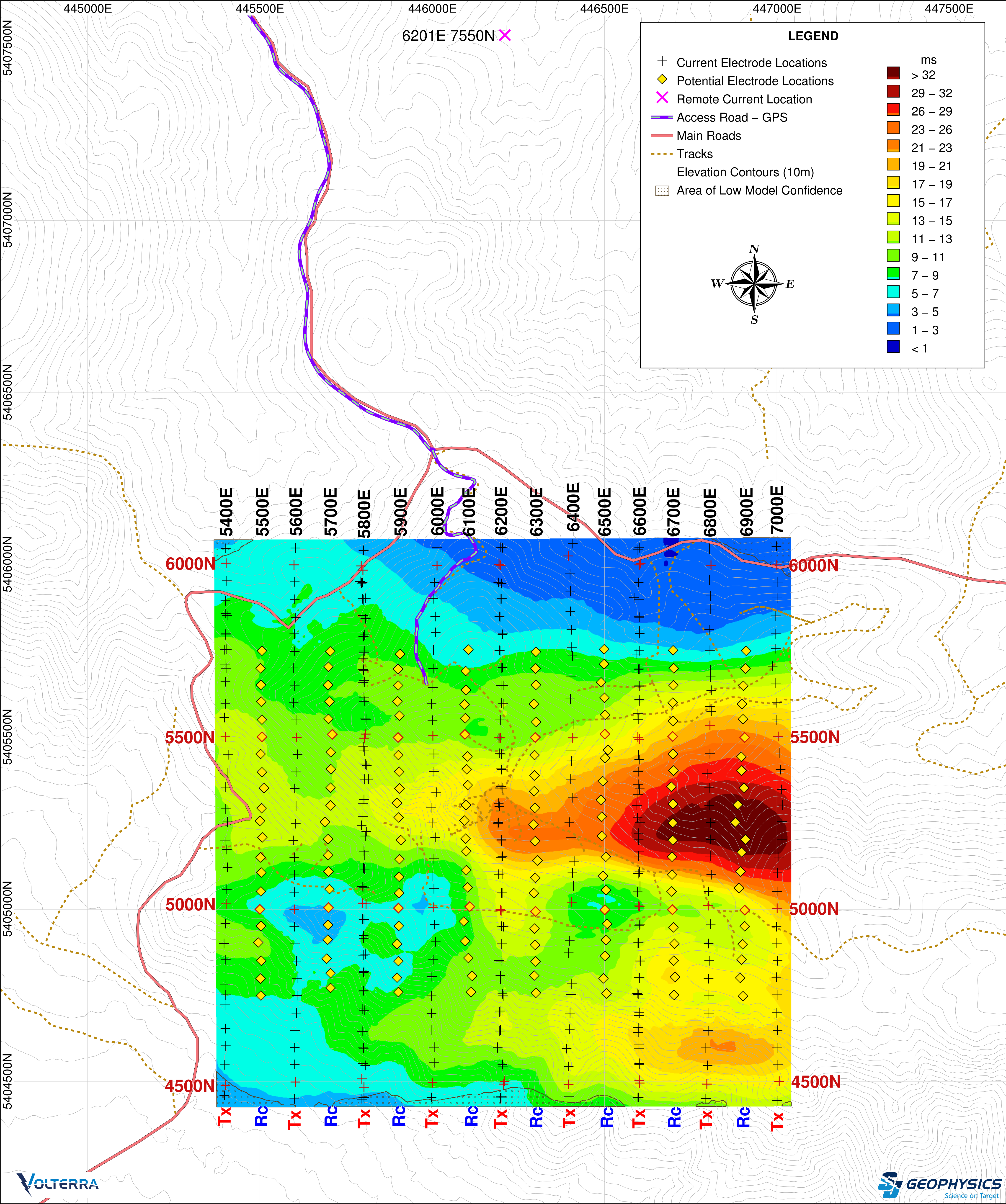


Project Information:  
 Survey by: SJ Geophysics Ltd.  
 Survey Type: Volterra–3DIP  
 Survey Date: May – June, 2018  
 Inversion by: SJ Geophysics Ltd.  
 Inversion Software: UBC–GIF DCIP3D

Instrumentation:  
 Receiver: Volterra Acquisition Units  
 Transmitter: GDD TX II  
 Array Type: Distributed 3DIP  
 Apparent Chargeability Integration : 50–1950 ms

Mapping Information:  
 Datum: GDA94  
 Projection: MGA Z55  
 Inversion Model: ipinv3d\_ UTM\_r2i04.chg  
 Colour Classification: Modified Linear  
 Mapping Date: 27–Jul–2018



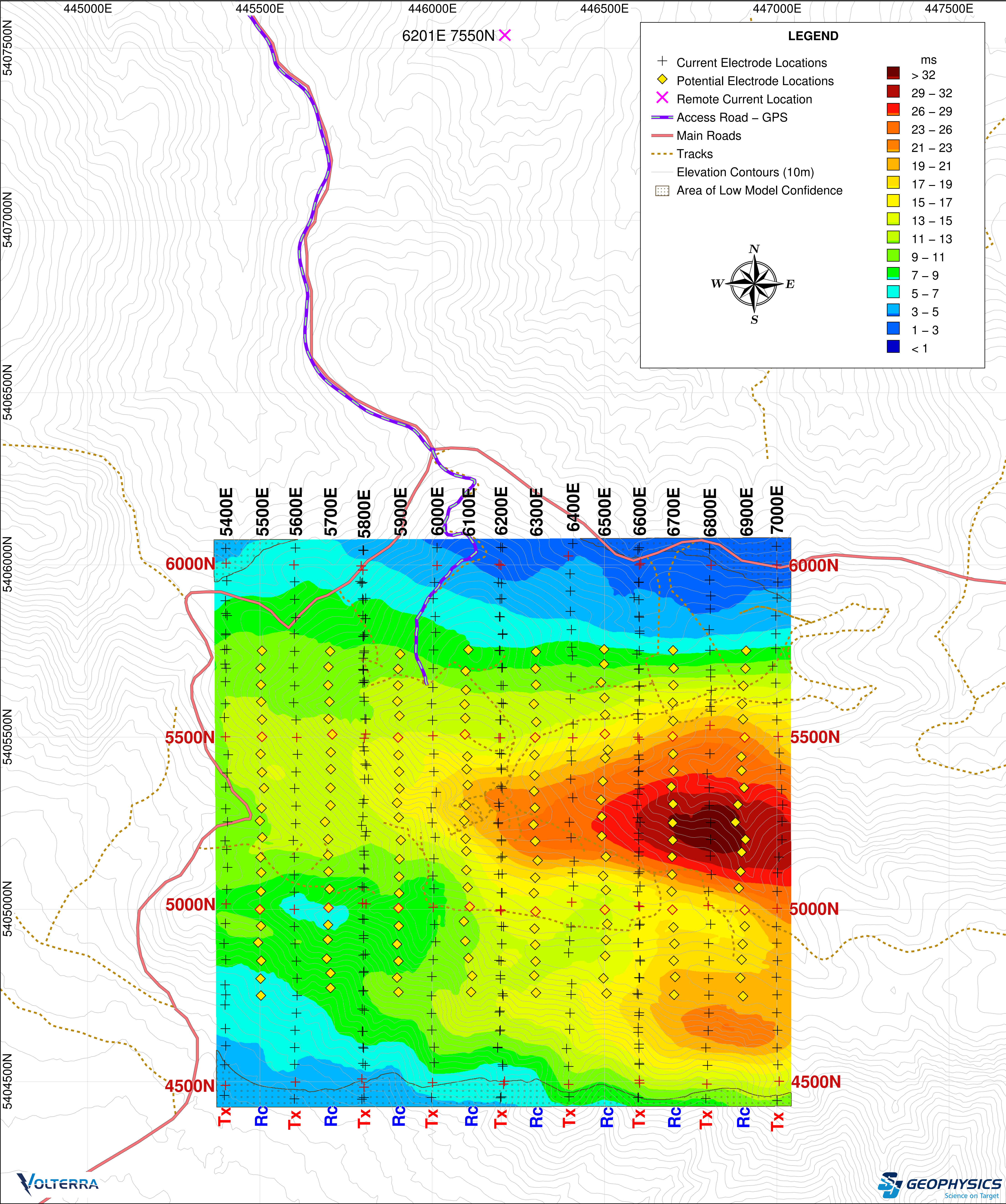


Project Information:  
Survey by: SJ Geophysics Ltd.  
Survey Type: Volterra–3DIP  
Survey Date: May – June, 2018  
Inversion by: SJ Geophysics Ltd.  
Inversion Software: UBC–GIF DCIP3D

Instrumentation:  
Receiver: Volterra Acquisition Units  
Transmitter: GDD TX II  
Array Type: Distributed 3DIP  
Apparent Chargeability Integration : 50–1950 ms

Mapping Information:  
Datum: GDA94  
Projection: MGA Z55  
Inversion Model: ipinv3d\_ UTM\_r2i04.chg  
Colour Classification: Modified Linear  
Mapping Date: 27–Jul–2018

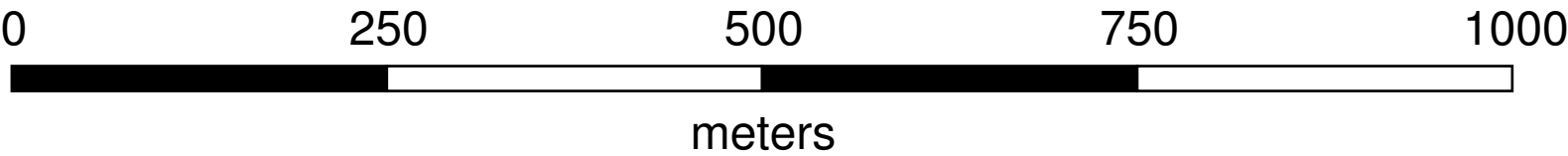




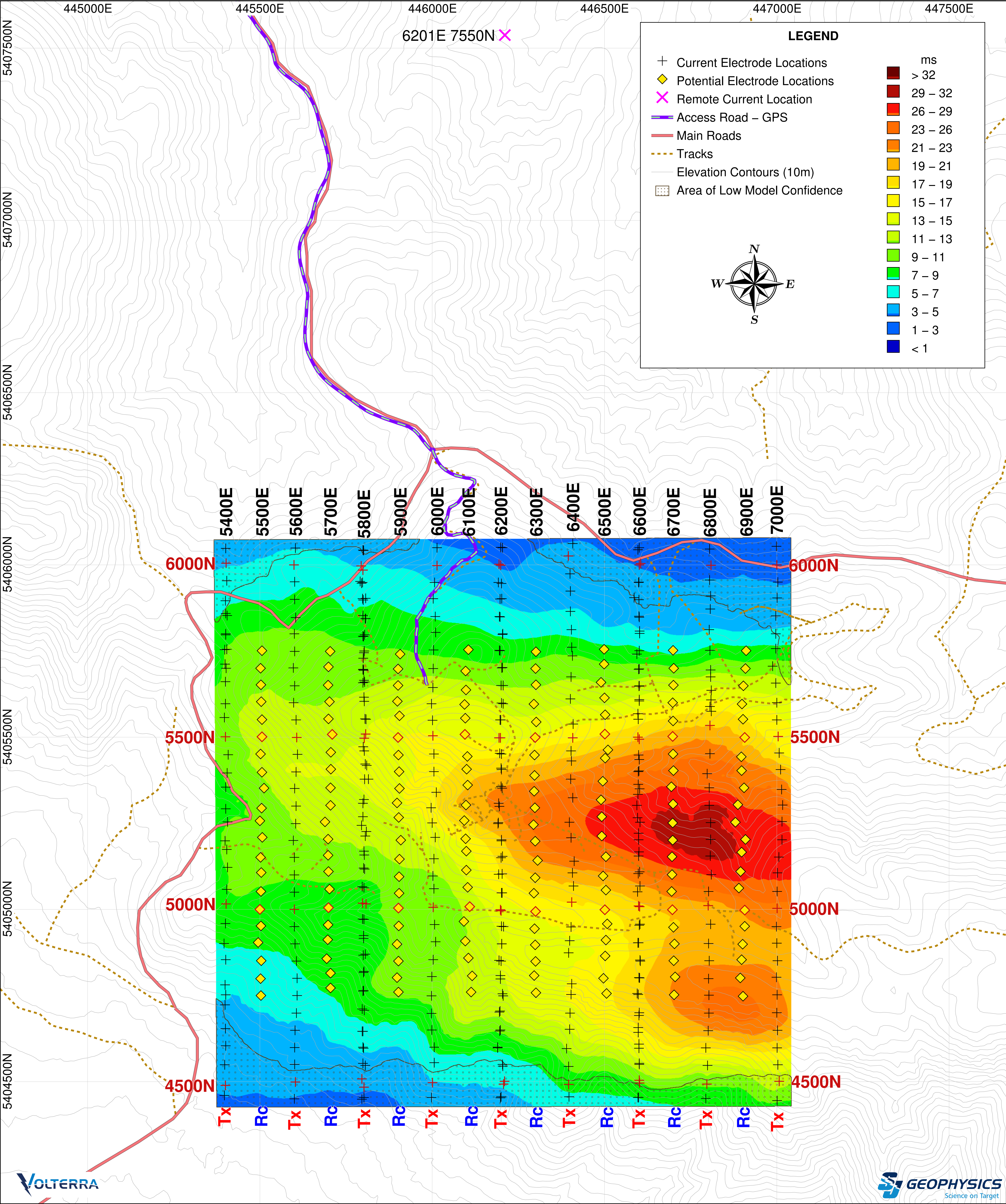
Project Information:  
Survey by: SJ Geophysics Ltd.  
Survey Type: Volterra-3DIP  
Survey Date: May – June, 2018  
Inversion by: SJ Geophysics Ltd.  
Inversion Software: UBC-GIF DCIP3D

Instrumentation:  
Receiver: Volterra Acquisition Units  
Transmitter: GDD TX II  
Array Type: Distributed 3DIP  
Apparent Chargeability Integration : 50–1950 ms

Mapping Information:  
Datum: GDA94  
Projection: MGA Z55  
Inversion Model: ipinv3d\_UTM\_r2i04.chg  
Colour Classification: Modified Linear  
Mapping Date: 27-Jul-2018







Project Information:  
Survey by: SJ Geophysics Ltd.  
Survey Type: Volterra–3DIP  
Survey Date: May – June, 2018  
Inversion by: SJ Geophysics Ltd.  
Inversion Software: UBC–GIF DCIP3D

Instrumentation:  
Receiver: Volterra Acquisition Units  
Transmitter: GDD TX II  
Array Type: Distributed 3DIP  
Apparent Chargeability Integration : 50–1950 ms

Mapping Information:  
Datum: GDA94  
Projection: MGA Z55  
Inversion Model: ipinv3d\_ UTM\_r2i04.chg  
Colour Classification: Modified Linear  
Mapping Date: 27–Jul–2018