

MARINER
1, 2 & 3, ANTWERP
GEOLOGICAL
MAP
1:50,000

78-1264a



NOTE:
This interpretation is based upon —
surface (KT 10/74-M-3B),
float (KT 10/74-M-3C), and
auger hole rock chip (KT 10/74-M-3D)
geological data.

SYMBOLS

2739 Thin section and rock number
2742 Rock sample for geochemical analysis

--- Interpreted contact

• Power auger hole
○ Hand auger hole
○ Auger core hole
□ Grid position

GEOLOGICAL INTERPRETATION

Pencil

▨ TERT. Olivine basalt (thin)

▨ TERT. Olivine basalt (thick)

19-20 Biotite feldspar quartz porphyry

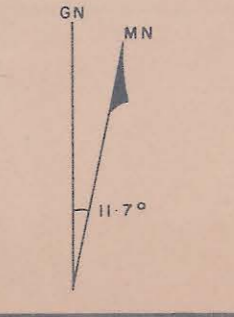
19-41 Argillic - chloritic (biotite feldspar) quartz porphyry

19-41 Argillic - chloritic (biotite feldspar) quartz porphyry
introduced by quartz veins with associated pyrite (limonite mineralization?)
and massive (B) quartz veins. Principally of Mariner 3

AUGER CORE HOLE ROCK GEOCHEMISTRY (ppm)

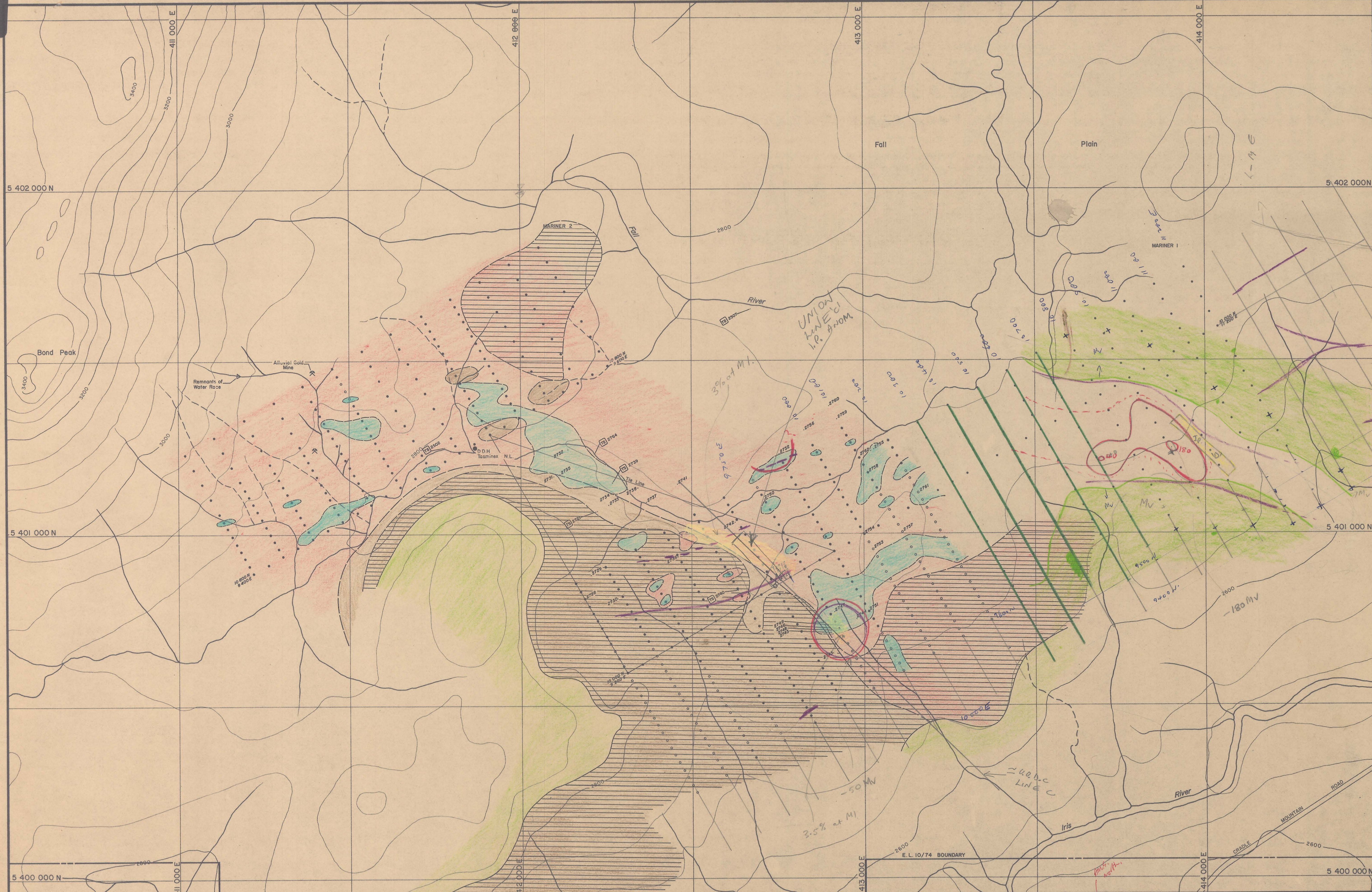
KR	Depth Interval [m]	Cu	Pb	Zn	Ag	Cd	Mn	Sr	Ba	Fe %
2717	8.94 - 9.04	120	1760	320	10	5	520	100	500	4.0
2718	11.25 - 11.38	160	1800	290	55	5	7600	100	1000	2.9
2718	11.28 - 11.38	170	7900	300	60	5	7850	—	—	3.0
2719	16.64 - 16.74	10	310	1010	2	2	1680	50	500	3.6
2720	17.87 - 17.97	5	110	380	2	5	630	50	1000	1.8

* Denotes repeat and check analysis



DATE AUGUST '78
BY GEOLOGIST G.L.B.
DRAWN J.P.M.
CHECKED G.L.B.

GEOPEKO
A DIVISION OF PEKO-WALLSEND OPERATIONS LTD.
SCALE 1:50,000
No KT10/74-M-3A
E.L.10/74 BLACK BLUFF, TASMANIA
MARINER 1, 2 and 3
INTERPRETATION GEOLOGICAL MAP



NOTE:
This interpretation is based upon —
surface (KT 10/74-M-3B),
float (KT 10/74-M-3C), and
auger hole rock chip (KT10/74-M-3D)
geological data.

SYMBOLS
 [Symbol] 2739 This section and rock number
 [Symbol] 2742 Rock sample for geochemical analysis,
 results in appendix 4.
 --- Approximate contact.
 --- Interpreted contact.
 ● Power auger hole.
 ○ Hand auger hole.
 ○ Auger core hole.

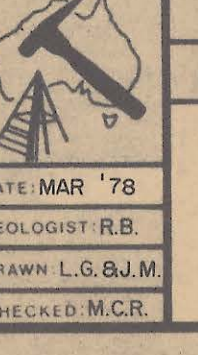
GEOLOGICAL INTERPRETATION
 [Symbol] TERT. Olivine basalt (thin)
 [Symbol] TERT. Olivine basalt (thick)
 [Symbol] Lithic quartz crystal tuff
 [Symbol] Biotite feldspar quartz porphyry
 [Symbol] Argillite-chlorite biotite feldspar quartz porphyry (minor volcanic breccia).

AUGER CORE HOLE ROCK GEOCHEMISTRY: (ppm)

KR	Depth Interval	Cu	Pb	Zn	Ag	Cd	Mn	Sr	Ba	Fe %
2717	8.94 - 9.04	120	1760	530	10	5	520	100	500	4.0
2718	11.28 - 11.38	160	7800	290	55	5	7600	100	1000	2.9
2718A	11.28 - 11.38	170	7900	300	60	5	7650	—	—	3.0
2719	16.64 - 16.74	10	310	1010	2	2	1680	50	500	3.6
2720	17.87 - 17.97	5	110	380	2	2	630	50	1000	1.8

● Denotes repeat and check analysis.

Mv fit
VLF 'edge' of anom. body.
S.P.
IP (LINE 'D')
3.5% at M
UNION LINED I.P. ANOM.



GEOPEKO LIMITED
 KING ISLAND GROUP
 No. KT10/74-M-3A
 E.L.10/74 BLACK BLUFF, TASMANIA
 MARINER 1 and MARINER 2
 INTERPRETATION GEOLOGICAL MAP

DATE MAR '78
 GEOLOGIST R.B.
 DRAWN L.G.B.J.M.
 CHECKED M.C.R.

SCALE 1:5000


73-1264 b

Mounted
K.S.



LEGEND:
 20 Cu ppm
ANALYTICAL METHODS: Cu by AAS following hot conc.
 HCL leach and HCL/HNO₃ leach in letter stages for
 1 hour of 0.25g sample.
 A.C.S. Laboratories Pty. LTD.

NOTE:
 This map has been compiled from enlargements of the
 Tasmanian Lands Department's 1:15,840 scale
 topographic machine plots.


 DATE: November 1977
 GEOLOGIST: R.B.
 DRAWN: L.G. & J.M.
 CHECKED: M.C.R.

GEOPEKO LIMITED
 KING ISLAND GROUP

50000
 SCALE: 1:10,000

E.L. 10/74
 BLACK BLUFF, TASMANIA

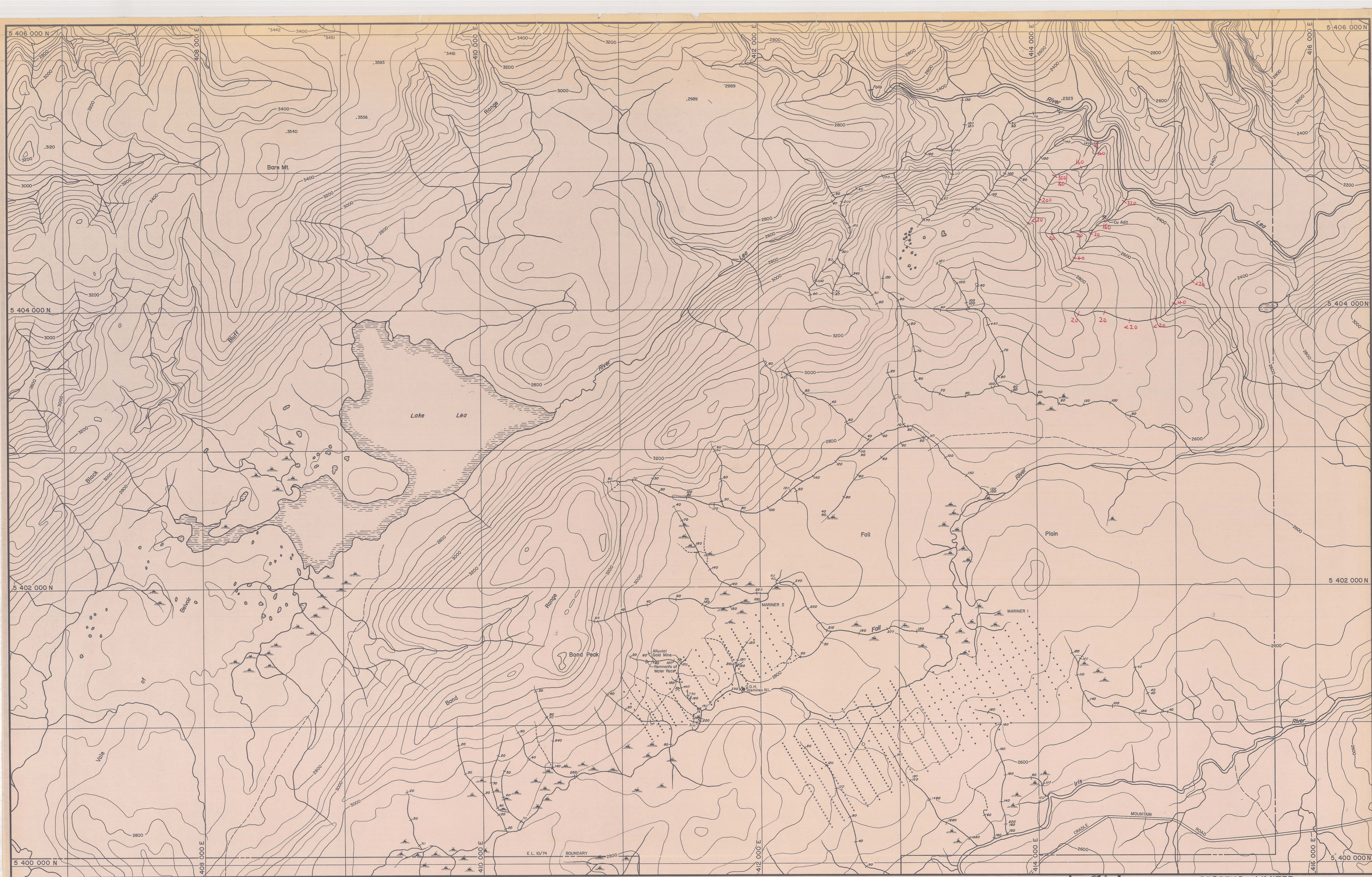
DRAINAGE GEOCHEMICAL RESULTS
COPPER

No. KT10/74-3B-1

KT10/74-1	KT10/74-3
KT10/74-2	KT10/74-3

*715 ppm
 anomalous
 low.*

73-1264c



LEGEND:

1680 Pp ppm
 ANALYTICAL METHODS: Pb by AAS following hot conc.
 HCL leach and HCL/HNO₃ leach in latter stages for
 1 hour of 0.25g sample.
 A.C.S. Laboratories Pty LTD.

NOTE:
 This map has been compiled from enlargements of the
 Tasmanian Lands Department's 1:15840 scale
 topographic machine plots.

500 ppm
 anomalies
 lowlands



DATE: November 1977
 GEOLOGIST: R.B.
 DRAWN: L.G. & J.M.
 CHECKED: M.C.R.

GEOPEKO LIMITED KING ISLAND GROUP		No. KTIO/74-3B-2 KTIO/74-1 KTIO/74-2 KTIO/74-3
SCALE: 1:10,000 E.L. 10/74 BLACK BLUFF, TASMANIA DRAINAGE GEOCHEMICAL RESULTS LEAD		

78-1264 d



LEGEND:
 #20 Zn ppm
 ANALYTICAL METHODS: Zn by AAS following hot conc.
 HCl leach and HCL/FHNO₃ leach in latter stages for
 1 hour of 0.25g sample.
 A.C.S. Laboratories Pty. LTD.

NOTE:
 This map has been compiled from enlargements of the
 Tasmanian Lands Department's 1:15,000 scale
 topographic machine plots.



DATE: November 1977
 GEOLOGIST: R.B.
 DRAWN: L.G. & J.M.
 CHECKED: M.C.R.

GEOPEKO LIMITED
 KING ISLAND GROUP

SCALE: 1:10,000

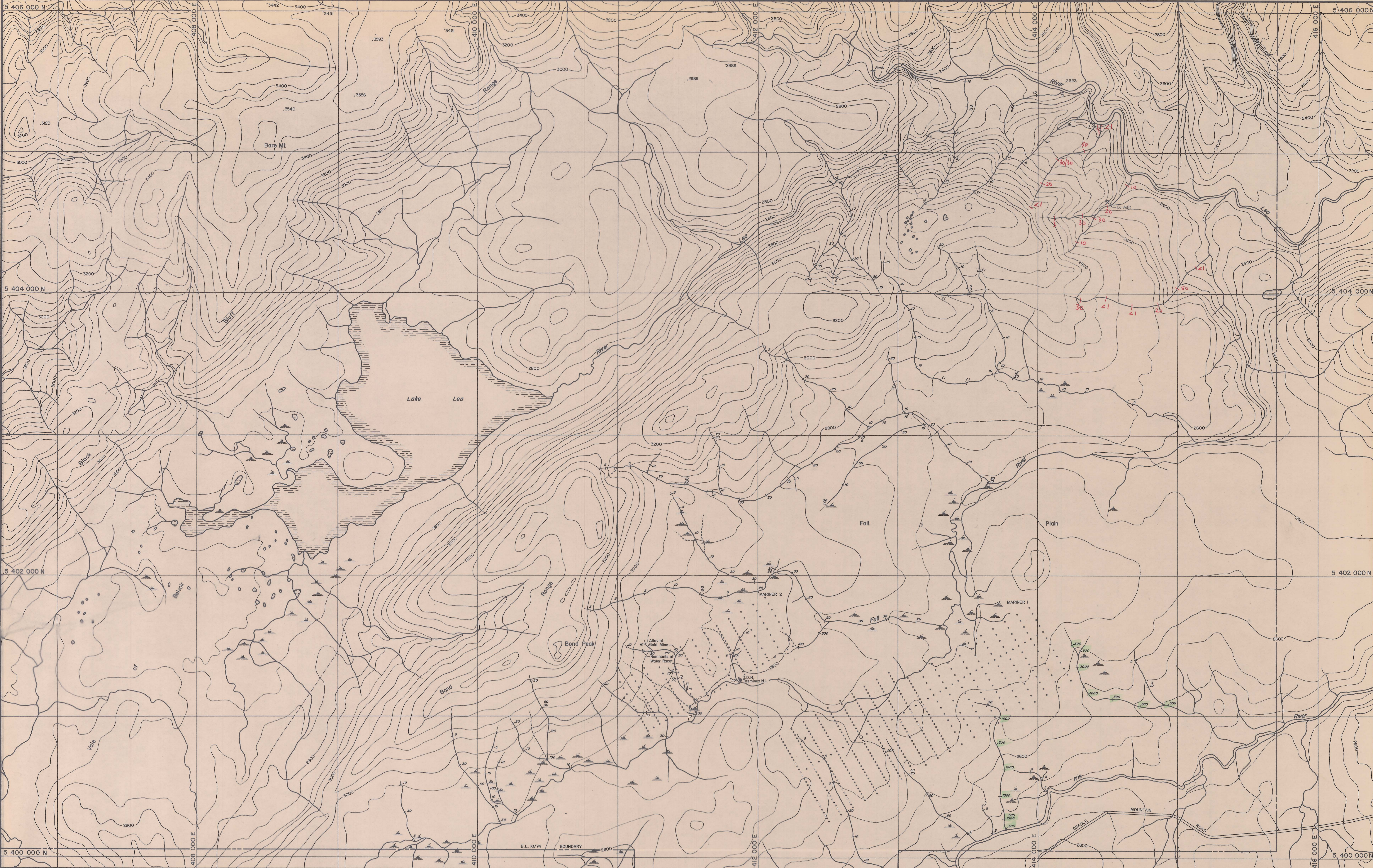
E.L. 10/74
 BLACK BLUFF, TASMANIA
DRAINAGE GEOCHEMICAL RESULTS
ZINC

No. KT10/74-3B-3

KT10/74-1	KT10/74-2	KT10/74-3	
-----------	-----------	-----------	--

*315 ppm
 above
 lowlands.*

78-1264e



LEGEND:
 1000 Sn ppm ANALYTICAL METHOD: Sn by Emission Spectrography
 A.C.S. Laboratories Pty LTD.

NOTE:
 This map has been compiled from enlargements of the
 Tasmanian Lands Department's 1:15 840 scale
 topographic machine plots.



DATE: November 1977
 GEOLOGIST: R.B.
 DRAWN: L.G. & J.M.
 CHECKED: M.C.R.

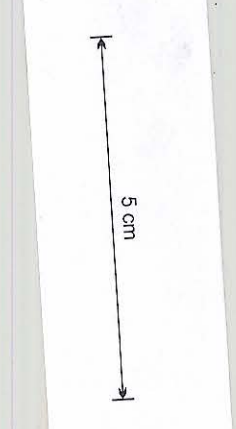
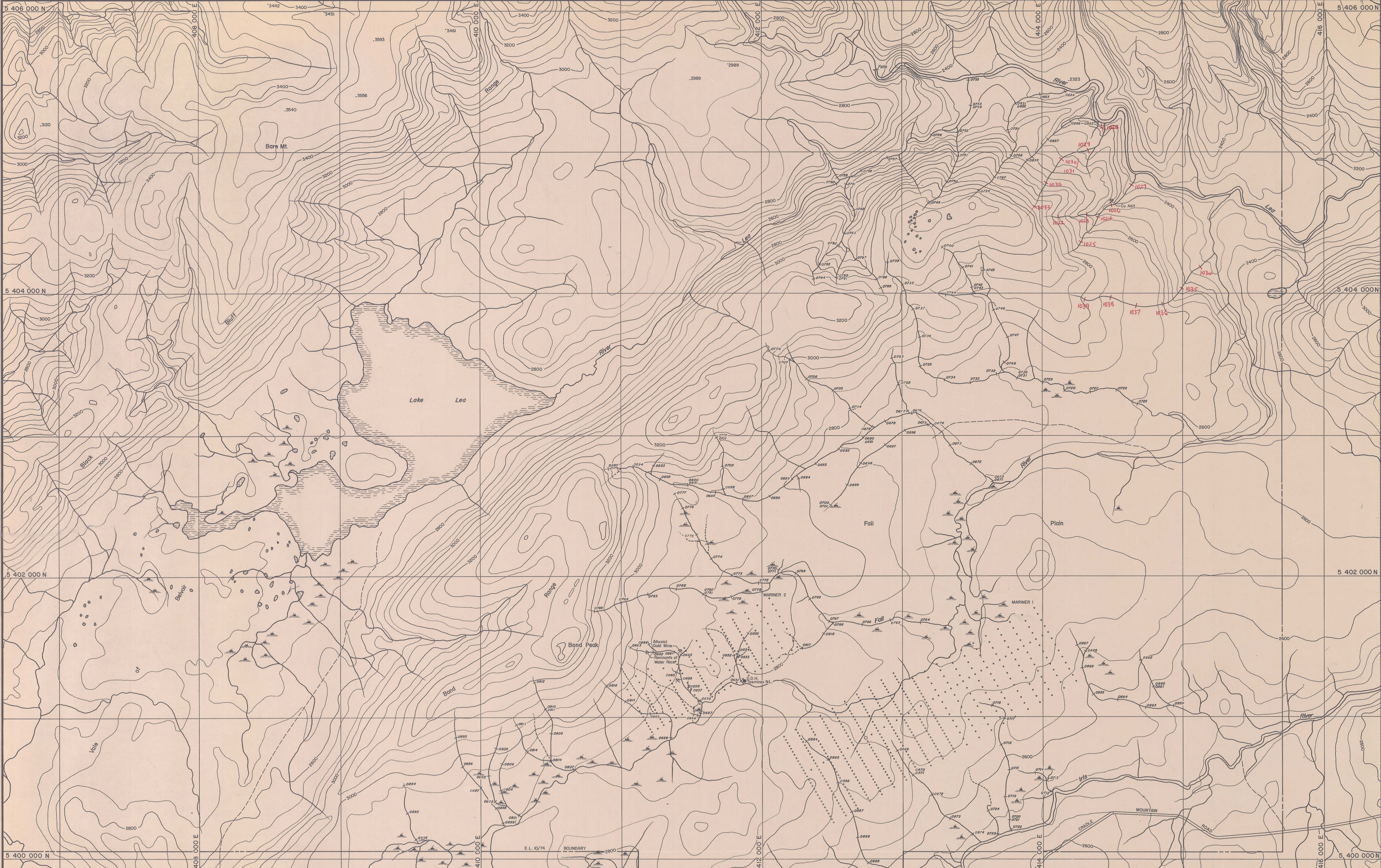
GEOPEKO LIMITED
 KING ISLAND GROUP

SCALE: 1:10,000 No. KT10/74-3B-4

E.L. 10/74
 BLACK BLUFF, TASMANIA
 DRAINAGE GEOCHEMICAL RESULTS
TIN

KT10/74-1
 KT10/74-2 KT10/74-3

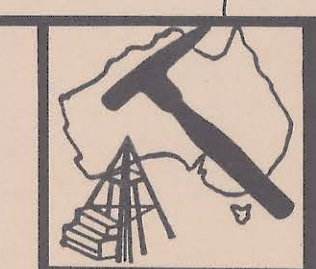
78-1264 P



78-1264 h

LEGEND:
 0812 Drainage sample No. KD 0812

NOTE:
 This map has been compiled from enlargements of the Tasmanian Lands Department's 1:19,840 scale topographic machine plots.



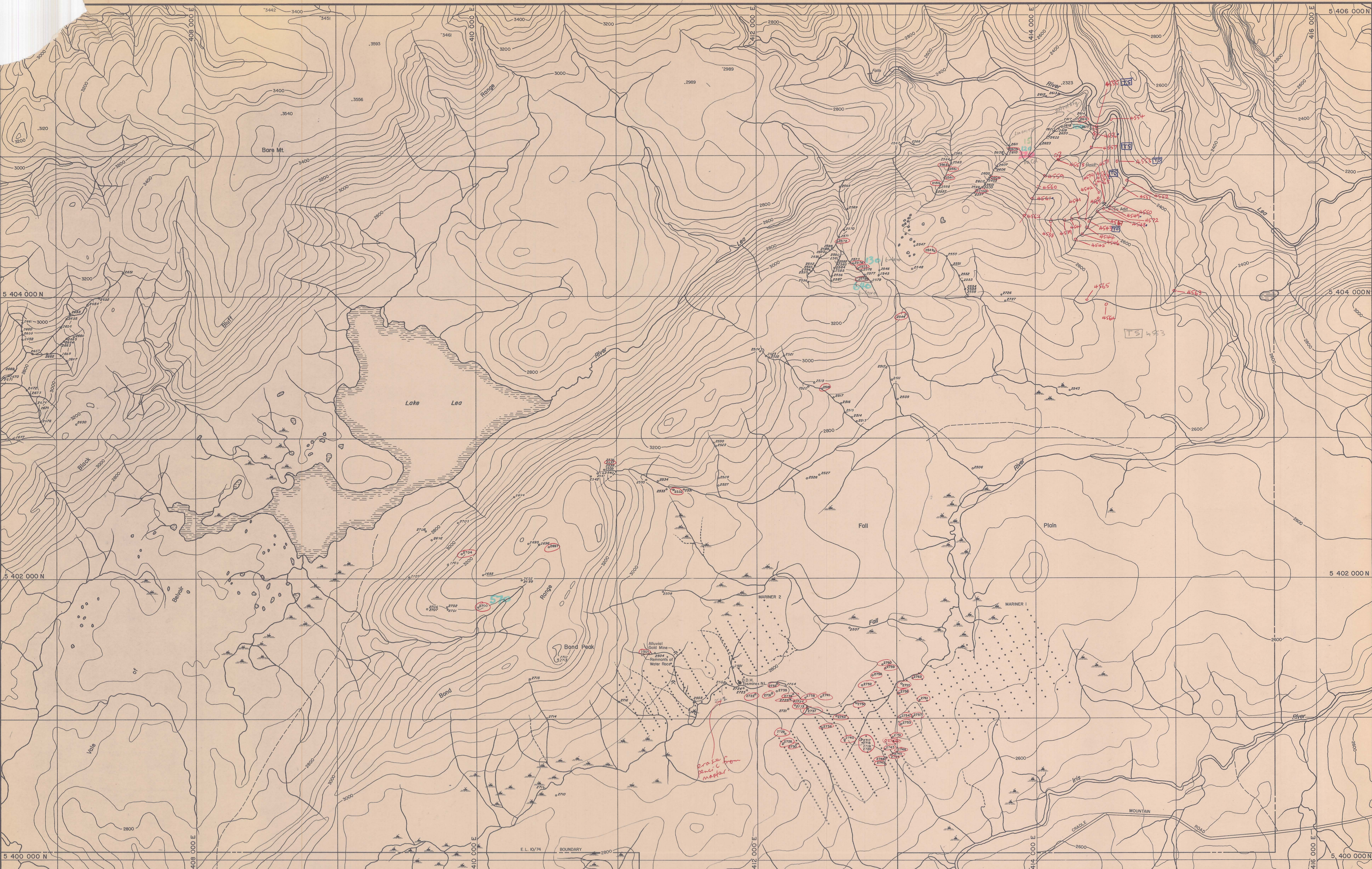
DATE: November 1977
 GEOLOGIST: R.B.
 DRAWN: L.G. & J.M.
 CHECKED: M.C.R.

GEOPEKO LIMITED
 KING ISLAND GROUP
 SCALE: 1:10,000
 No. KT10/74-3C

E.L. 10/74
BLACK BLUFF, TASMANIA
DRAINAGE SAMPLE LOCATION MAP

KT10/74-1	KT10/74-3
KT10/74-2	

KT10/74-3C
 M.P.



LEGEND:
 o 2710 Outcrop Sample No. KR 2710
 c 4560 Flood sample No. KR 4560

Plat. KR 2763 from quarry S. of E.L. Boundary

2757 * Rock geochemistry - App. 4

Cu
 Pb
 Zn

NOTE:
 This map has been compiled from enlargements of the
 Tasmanian Lands Department's 1:15840 scale
 topographic machine plots.

DATE: November 1977
 GEOLOGIST: R.B.
 DRAWN: L.G. & J.M.
 CHECKED: M.C.R.

GEOPEKO LIMITED
 KING ISLAND GROUP

SCALE: 1:10,000

E.L. 10/74
BLACK BLUFF, TASMANIA
ROCK SAMPLE LOCATION MAP

No. KT10/74-3D

KT10/74-1	KT10/74-3
KT10/74-2	KT10/74-4

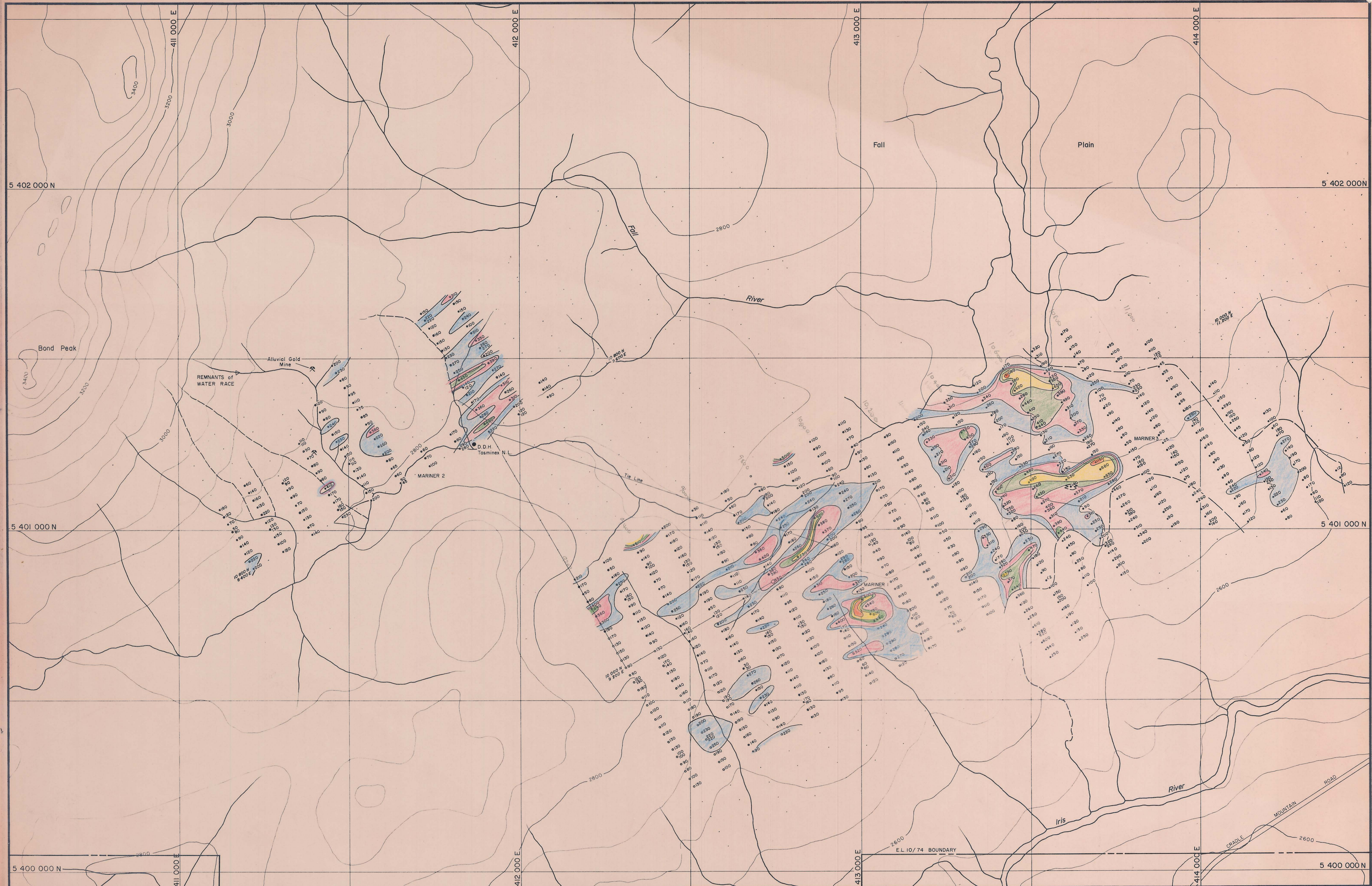
78-1264

Rock Sample
 L.S. M.N.R.

MARINER
1, 2, 3
ZINC
CONTROLS

78-1264 J

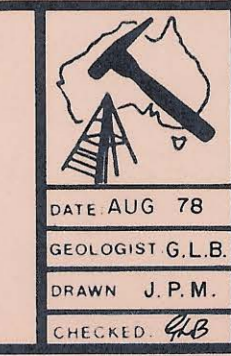
5 cm



LEGEND

200 - 300 (Zn ppm)	○110 Hand augured sample 110 ppm Zn
300 - 400 (Zn ppm)	○170 Power augured sample 170 ppm Zn
400 - 500 (Zn ppm)	○ Auger core hole
500 - 1000 (Zn ppm)	○190 Original sample
1000 +	○190 Duplicate sample
	— Grid position
	— Basalt contact

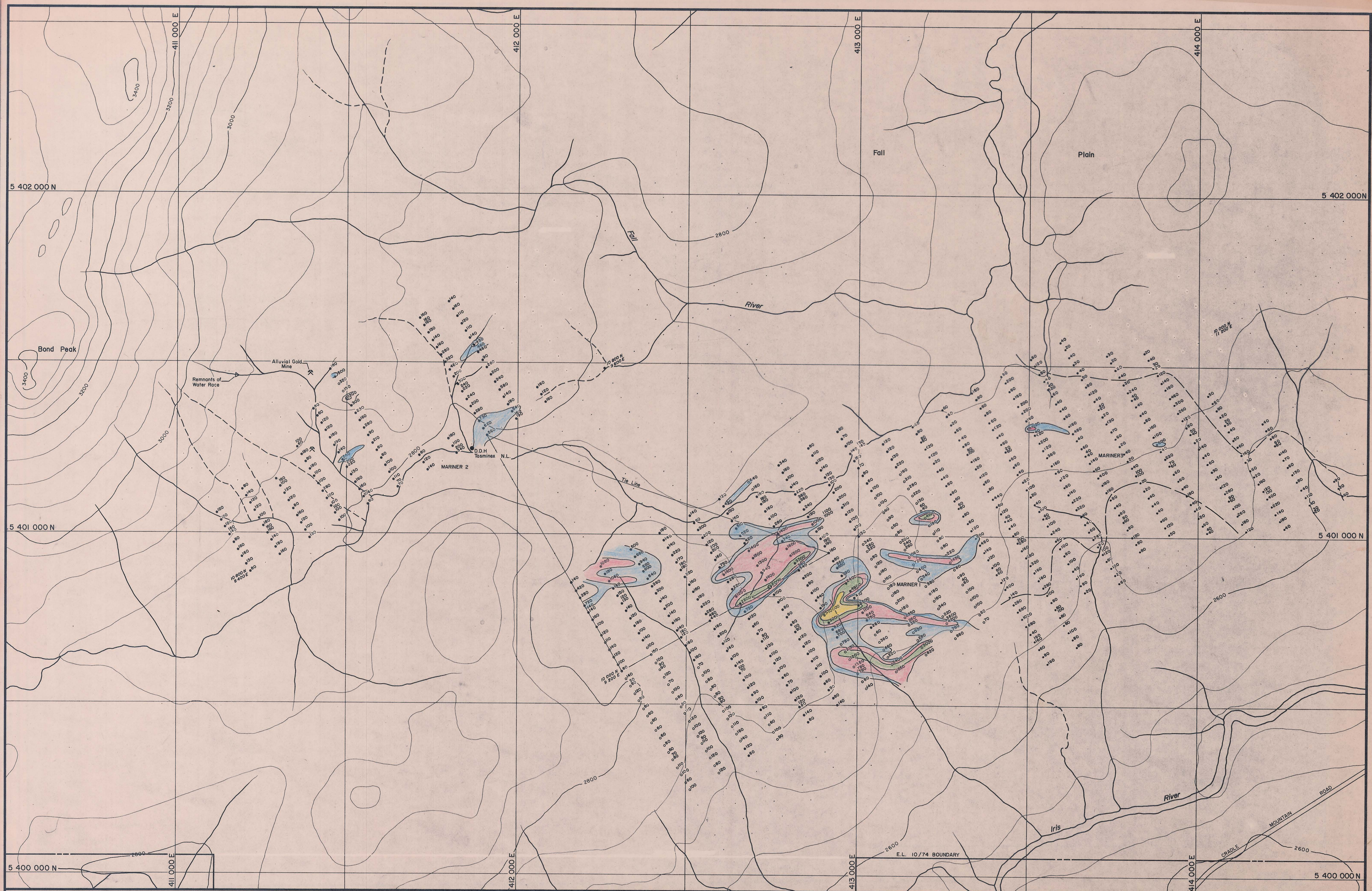
ANALYTICAL NOTES:
Analytical Methods: Zn by AAS following hot conc. HCL leach and HCL/HNO₃ leach in latter stages of 0.25g sample.
Size fraction analysed: - 80 mesh
Analytical results in ppm.



GEOPEKO
A DIVISION OF PEKO-WALLSEND OPERATIONS LTD.
No KT10/74-M-6
SCALE 1:5000
E.L. 10/74 BLACK BLUFF, TASMANIA
MARINER 1, 2 and 3
GEOCHEMICAL RESULTS
ZINC
DATE AUG 78
GEOLOGIST G.L.B.
DRAWN J.P.M.
CHECKED *[Signature]*

MARINER
1, 2, 3
LEAD
CONTINUED

78-1264 k



LEGEND:

	500 - 1000 (Pb ppm)	○80.....Hand augered sample 60 ppm Pb
	1000 - 2000 (Pb ppm)	○120.....Power augered sample 120 ppm Pb
	2000 - 5000 (Pb ppm)	○.....Auger core hole
	5000 +	80.....Original sample
		810.....Duplicate sample
	Grid position
	Result contact

ANALYTICAL NOTES:
 Analytical Methods: Pb by AAS following hot conc. HCL leach and HCL/HNO₃ leach in latter stages of 0.25g sample.
 Size fraction analysed: - 80 mesh
 Analytical results in ppm.

GEOPEKO
 A DIVISION OF PEKO-WALLSEND OPERATIONS LTD

No. KT10/74-M-5

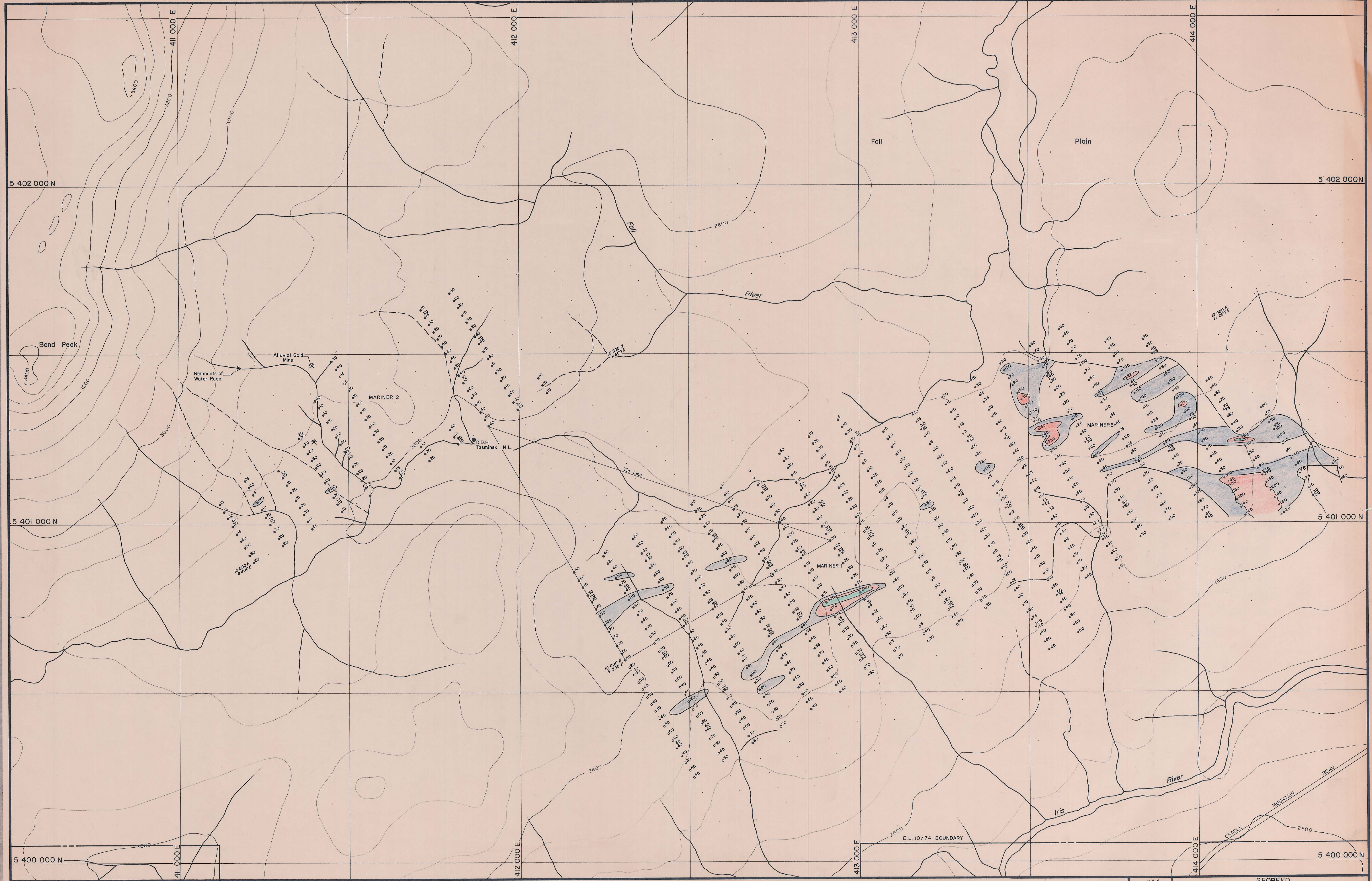
E.L. 10/74 BLACK BLUFF, TASMANIA
 MARINER 1, 2 and 3
 GEOCHEMICAL RESULTS
 LEAD

DATE: AUG '78
 GEOLOGIST: G.L.B.
 DRAWN: J.P.M.
 CHECKED: G.B.

MARINER
1, 2 & 3
COPPER
CONTOURS

78-1264 1

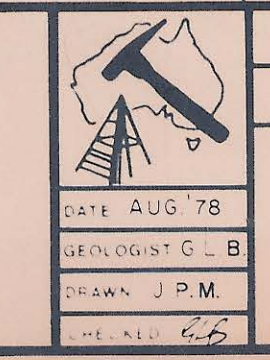
5 cm



LEGEND:

	75 - 150 (Cu ppm)	○50..... Hand augered sample 50 ppm Cu
	150 - 300 (Cu ppm)	●110..... Power augered sample 110 ppm Cu
	300 +	○..... Auger core hole
		○80..... Original sample
		○100..... Duplicate sample
	 Grid position
	 Basalt contact

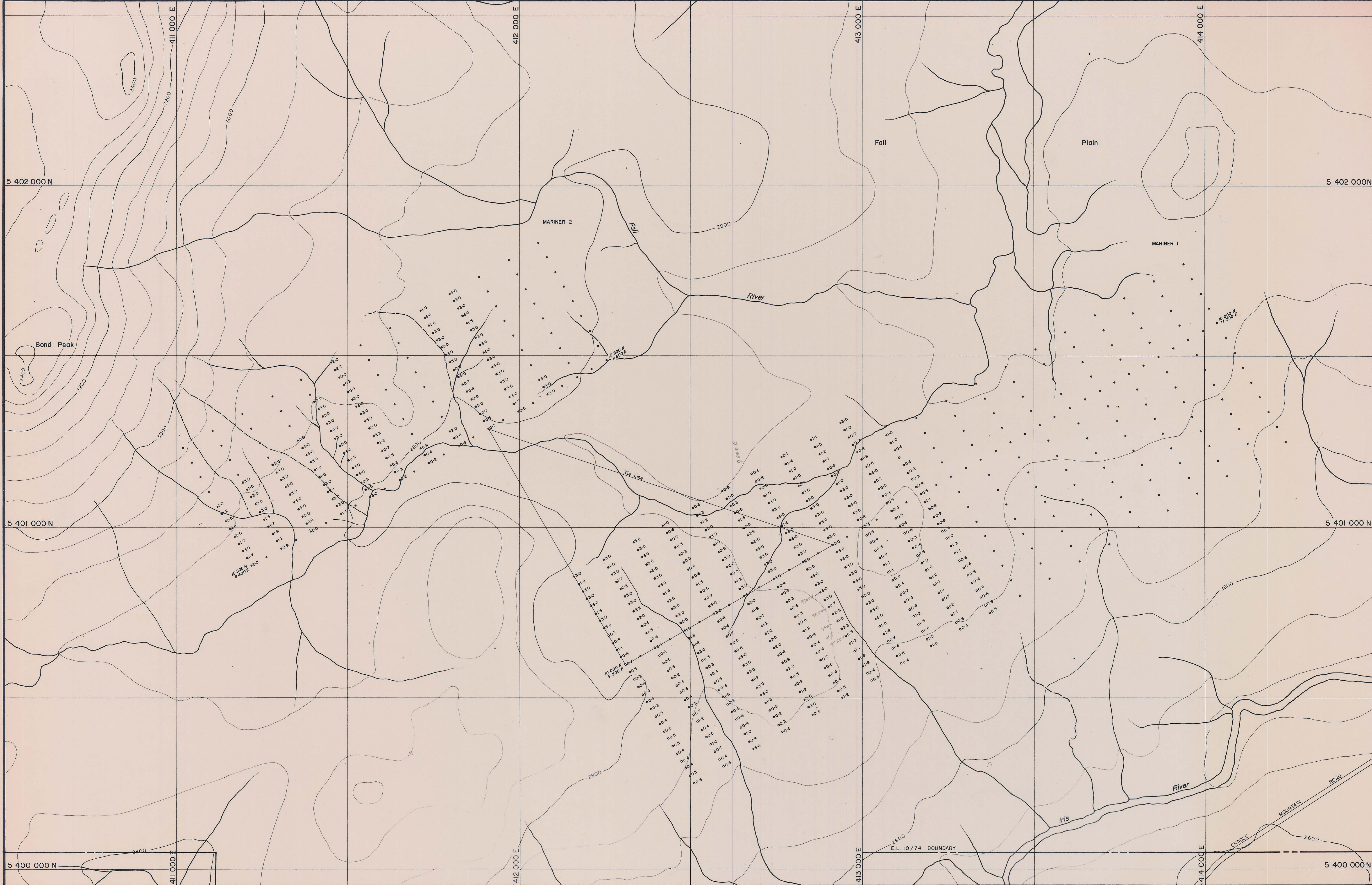
ANALYTICAL NOTES:
 Analytical Methods: Cu by AAS following hot conc. HCL leach and HCL/ANO₃ leach in latter stages of 0.25g sample.
 Size fraction analysed: -80 mesh
 Analytical results in ppm.



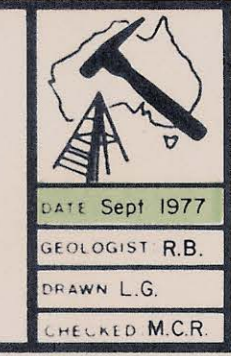
GEPEKO OPERATIONS LTD
 A DIVISION OF PEKO-WALLSEND
 No KT10/74-M-4
 E.L. 10/74 BLACK BLUFF, TASMANIA
 MARINER 1, 2 and 3
 GEOCHEMICAL RESULTS
 COPPER

DATE AUG 78
 GEOLOGIST G. B.
 DRAWN J.P.M.
 CHECKED K.S.

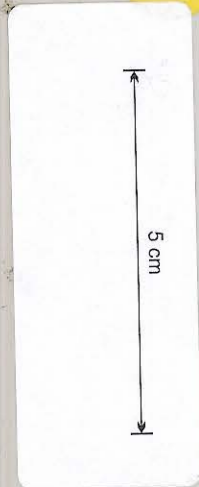
SCALE 1:5000



LEGEND:
 ○ 0.5 Hand augered hole depth 0.5 m
 ● 3.0 Power augered hole depth 3.0 m



GEOPEKO LIMITED
 KING ISLAND GROUP
 No KT10/74-M-13
 SCALE 1:5000
 E.L. 10/74 BLACK BLUFF, TASMANIA
 MARINER 1 and MARINER 2
 AUGER HOLE DEPTHS
 DATE Sept 1977
 GEOLOGIST R.B.
 DRAWN L.G.
 CHECKED M.C.R.



78-1924 m