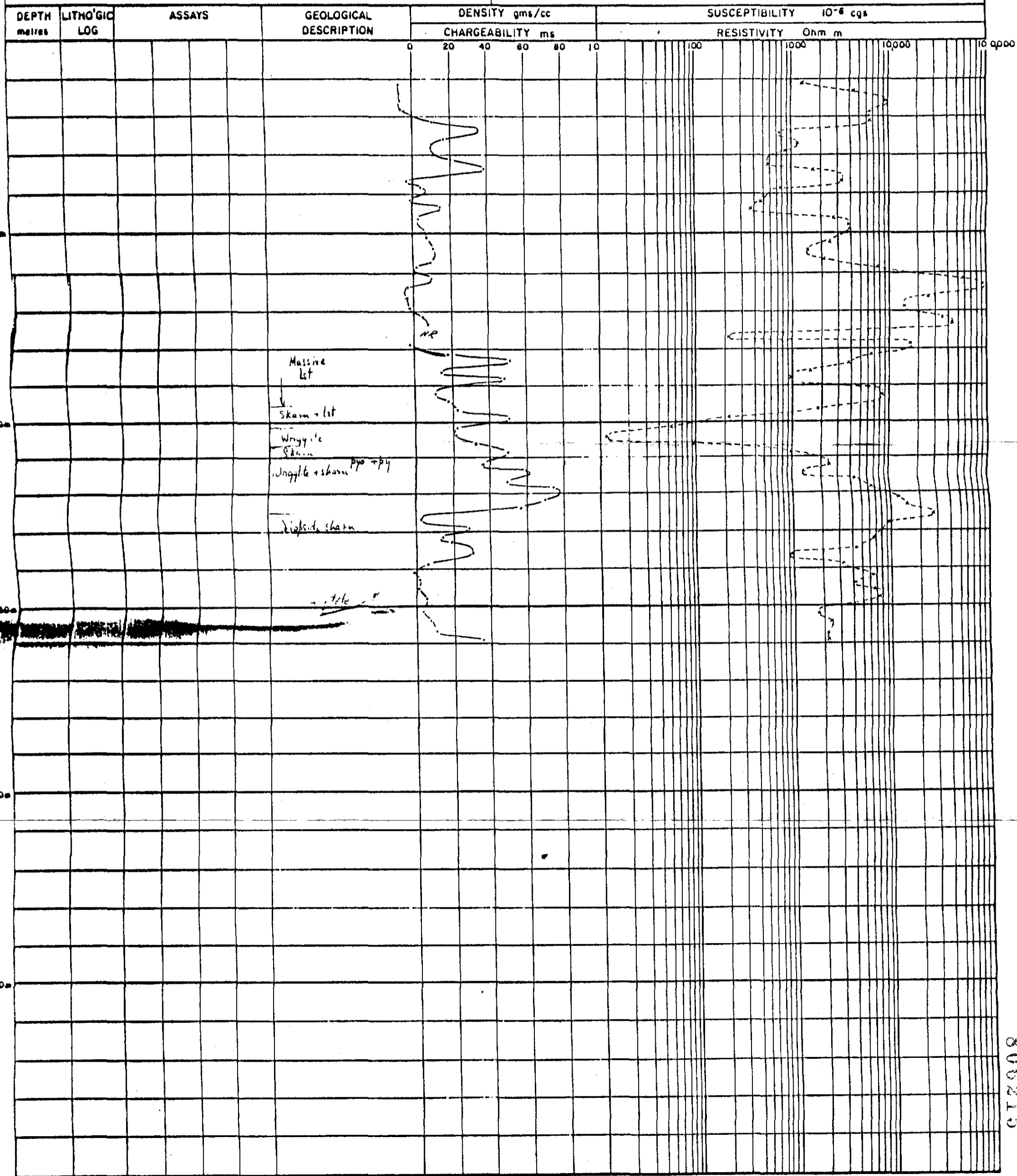


Geophysical Log

DIAMOND DRILL HOLE N° 135

PROJECT : MOINA	STATE : TAS	IP / RESISTIVITY LOGGING : —
ANOMALY N° :	GRID COORDS : S11135E on IPLine 1 2406/002N	CONTRACTOR : SCINTREX TAS-078A
INCLINATION :	AZIMUTH :	DATE LOGGED : 22-10-80
DATE DRILLED :	TOTAL DEPTH : 161.40m	ARRAY : 3 ARRAY
CASING :		ELECTRODE SPACINGS : 2.5m
GROUND GEOPHYSICAL ANOMALIES : MAG		SUSCEPTIBILITY LOGGING
		BY :
		DATE LOGGED :



806215