

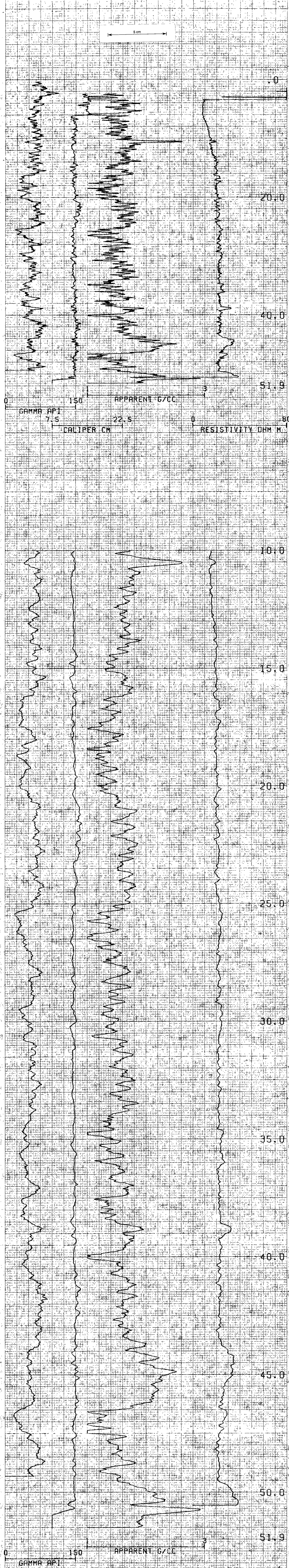
COMPANY C.S.R.  
 BOREHOLE R090  
 AREA LAUNCESTON ELEVATION  
 SHIBE STATE TAS

**HOLE DATA**

TOTAL DEPTH - DRILLER	52M	BIT SIZE	12CM
TOTAL DEPTH - LOGGER	51.9M	CASING - TYPE & SIZE	—
TOTAL METREAGE LOGGED	51.9M	BOREHOLE FLUID	H <sub>2</sub> O
LOGGING SPEED	7M/MIN.	FLUID RESISTIVITY	— °C
REFERENCE LEVEL	G.L.	SOFTWARE LEVEL	V9L1
PROBE NO.	9032A-901	SCALE SELECTION	K OPERATOR G CLIENT
REMARKS		TAPES 30 TRACK 3	

**EQUIPMENT DATA**

PROBE MODEL	9001	9002	90015
PROBE NUMBER	9001	9002	90015
DETECTOR TYPE	—	—	—
DETECTOR SIZE	12cm x 11cm	12cm x 11cm	12cm x 10cm
STD. GRAVITY	—	—	—
LOG. WORK. LOG	—	—	—
TEST READING	—	—	—
WATER FACTOR	—	—	—
CASING FACTOR	—	—	—
DENSITY	—	—	—
DETECTOR TYPE	—	—	—
DETECTOR SIZE	12cm x 11cm	12cm x 11cm	—
SOURCE NO.	—	124	—
SOURCE TYPE	—	254G	—
SOURCE STRENGTH	—	102M	—
SOURCE SPACING	—	—	—
DETECTOR TYPE	—	—	—
DETECTOR SIZE	—	—	—
SOURCE NO.	—	—	—
SOURCE TYPE	—	—	—
SOURCE STRENGTH	—	—	—
SOURCE SPACING	—	—	—
SALT PY RESISTANCE	—	—	—
RESISTIVITY	—	—	—
SELF POTENTIAL	—	—	—
TEMPERATURE	—	—	—
WATERFLO	—	—	—
GRAVITY	—	—	—



COMPU LOG V8L2 PLOT 04-18-82

R091  
 C.S.R.  
 LAUNCESTON

HOLE DIAMETER : 12.0  
 PROBE # 9032A-901  
 SENSOR #1 CAL STD CPS = 4825  
 SENSOR #4 CAL RUN CPS = 4700  
 SENSOR #4 CAL BIAS = 0

DATA V9L1 TRUCK # 8038  
 GREG CREWS APPL # 1030 K