

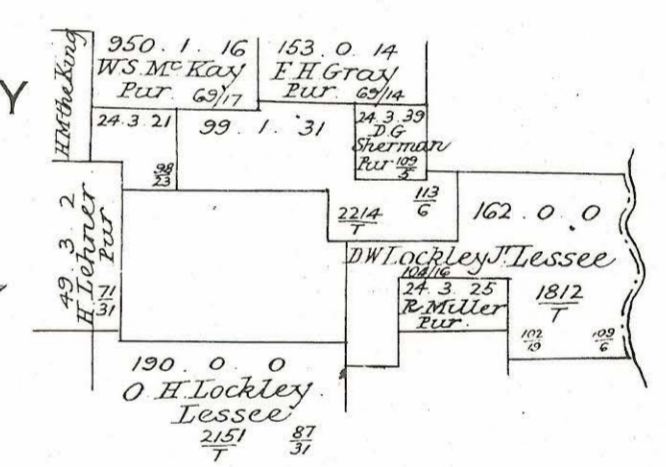
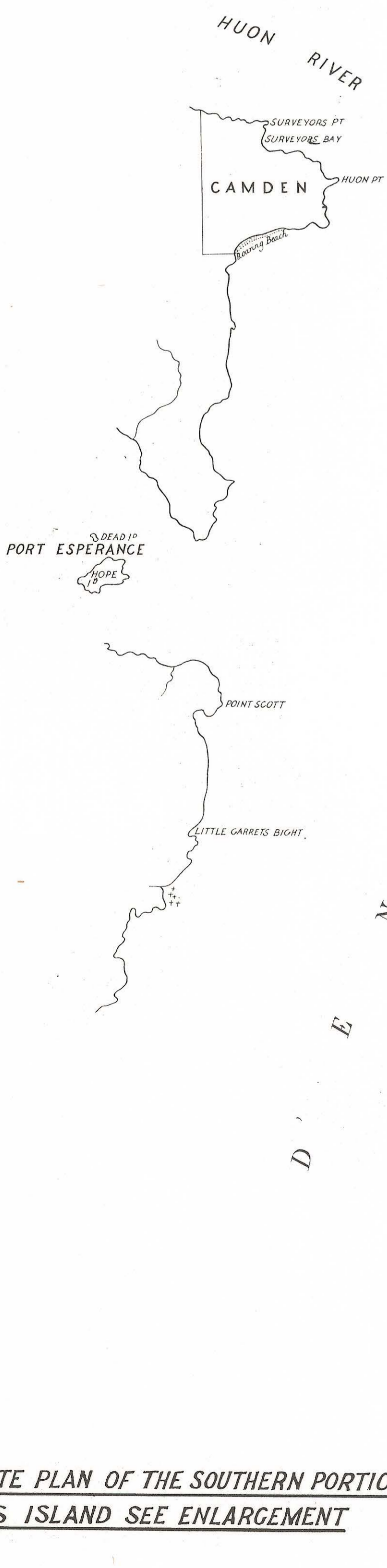
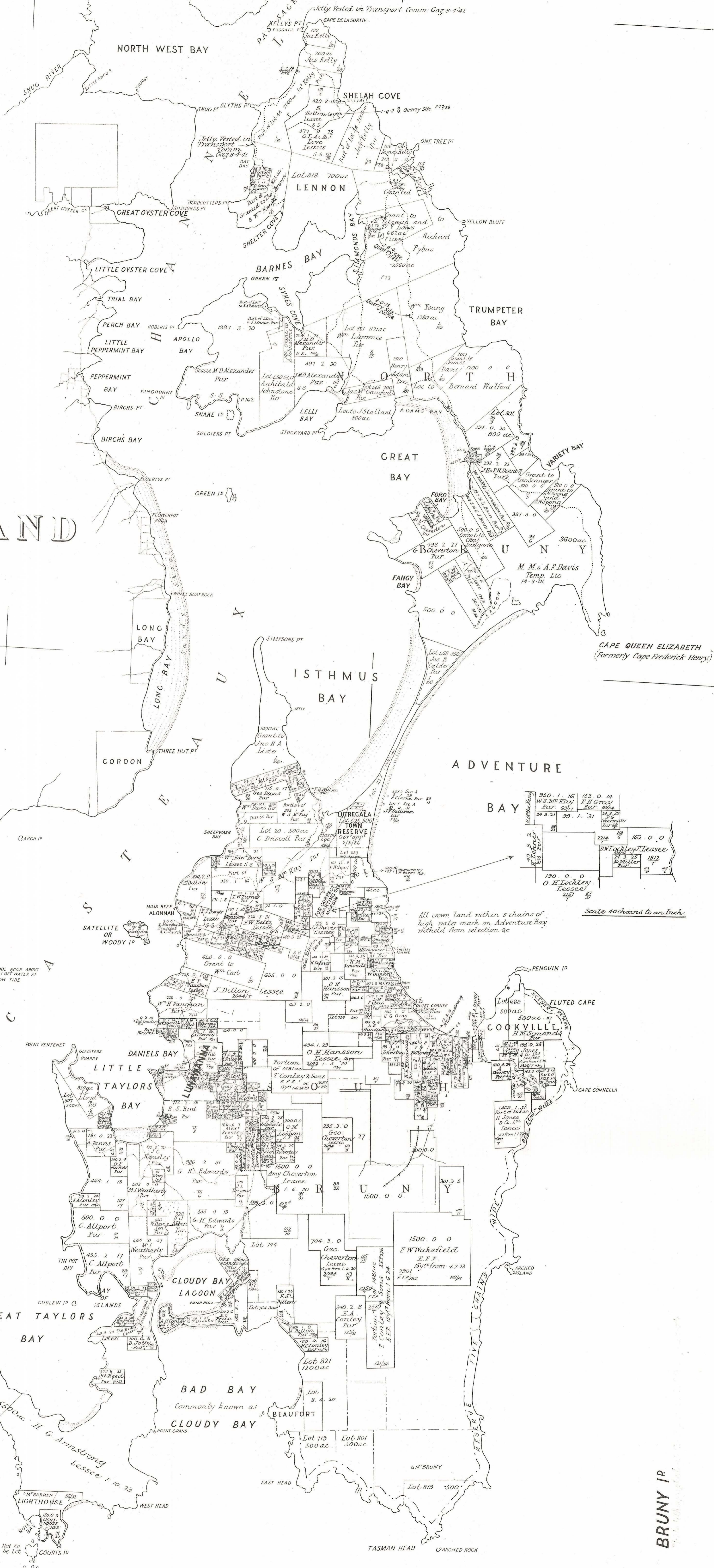


BRUNY ISLAND

SCALE 1 INCH TO A MILE

Completed and Drawn at the Dept. of Surveys Hobart

5 cm



All crown land within a chains of high water mark on Adventure Bay withheld from selection. See Scale 40 chains to an Inch.

Photo-lithographed by Mercury Press Pty. Ltd., Hobart, for Lands & Survey Dept., Hobart, Tasmania, June, 1961

FOR UP TO DATE PLAN OF THE SOUTHERN PORTION OF THIS ISLAND SEE ENLARGEMENT